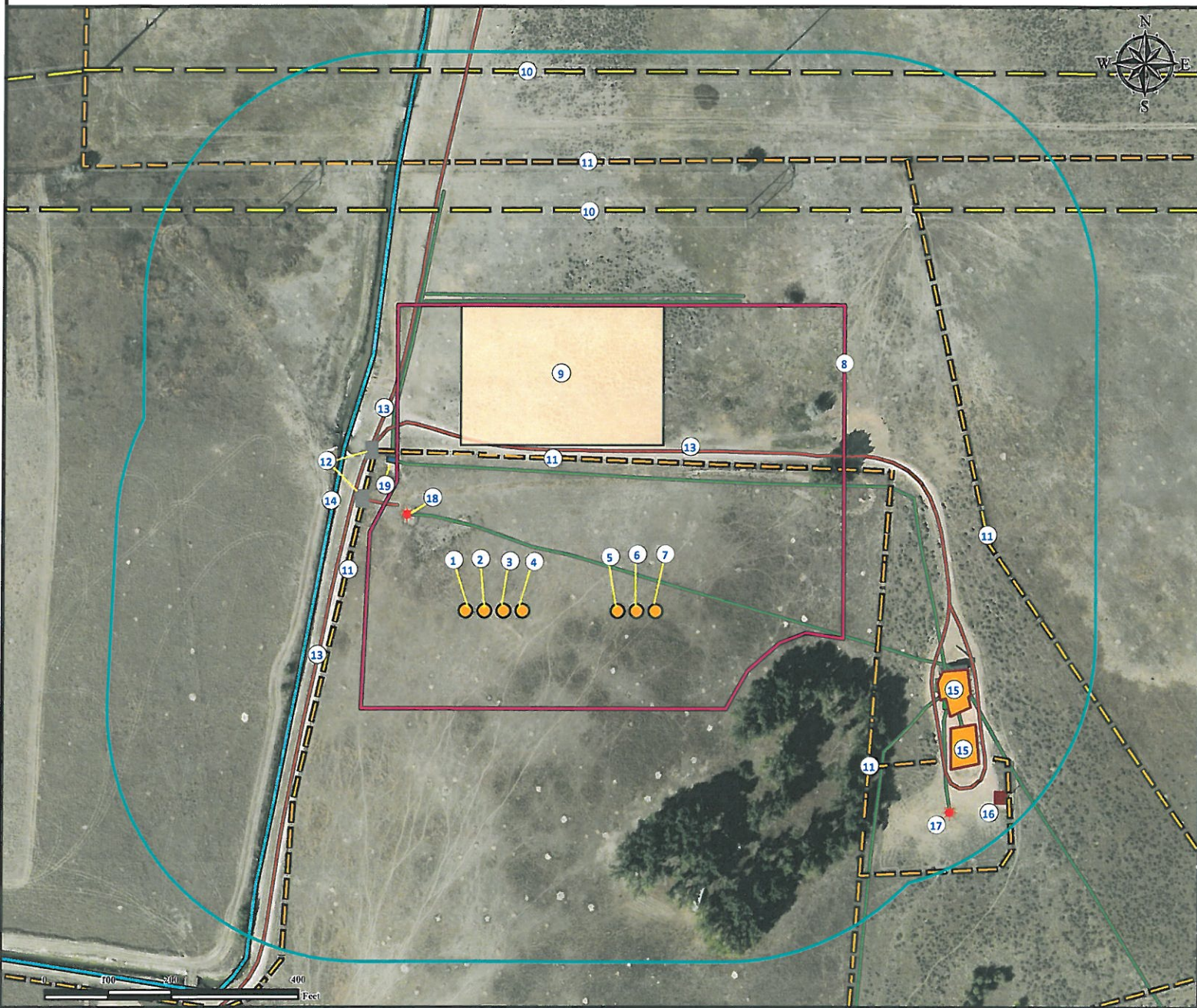


Location Drawing

PALYO 35N-W11HZ

Horizontal Multi Well Pad

NW¼ NW¼ SECTION 11, TOWNSHIP 2 NORTH, RANGE 65 WEST OF THE 6TH PRINCIPAL MERIDIAN



1. Proposed well PALYO 26N-11HZ.
2. Proposed well PALYO 13N-11HZ.
3. Proposed well PALYO 13C-11HZ.
4. Proposed well PALYO 35N-W11HZ.
5. Proposed well PALYO 35S-11HZ.
6. Proposed well PALYO 35N-E11HZ.
7. Proposed well PALYO 14N-11HZ.

8. Operational Disturbance Area.
9. Proposed Facility is to be ±262' N.
10. Power Lines are ±634' N and ±853' N.
11. Fences are ±710' N, ±244' N, ±284' W, ±600' SE, and ±744' NE.
12. Cattle guards are ±310' NW and ±349' NW.
13. Private roads are ±257' N, ±360' NW and ±302' NW.

14. Ditch is ±327' W.
15. Existing Facilities are ±655' SE and ±702' SE.
16. Emission control device is ±813' SE.
17. Existing well UPRR 53 PAN AM "J" #2 is ±747' SE.
18. Existing well PALYO 4-11 is ±238' NW.
19. Valve is ±308' NW.

Legend	Proposed Well	Facilities Enclosure	Fence	Power Line
Existing Well	Disturbance Area	Private Road	Ditch	
ECD	400' Radius	Underground Pipeline		
Cattle Guard	O & G Equipment	Proposed Facility		

Reference Location

** All Measurements are Made from
Reference Well PALYO 35N-W11HZ **
Lat: 40.158586° Long: -104.638059° (NAD83)
Elevation: 4856 Feet

Surface Use: Rangeland

Use our resources to find yours!
www.petro-fs.com
(303) 928-7128

Field Date: 04/23/2012
Drafting Date: 04/26/2012
Drafter: DLR
Checked By: BHF

Data Sources:
- Aerial courtesy of Anadarko
Petroleum Corporation (2010)

Prepared for: **Anadarko**
Petroleum Corporation
KERR-MCGEE OIL & GAS ONSHORE LP

