



Copyright (c) 2011 by Canrig Drilling Technology, Ltd.

Houston, TX

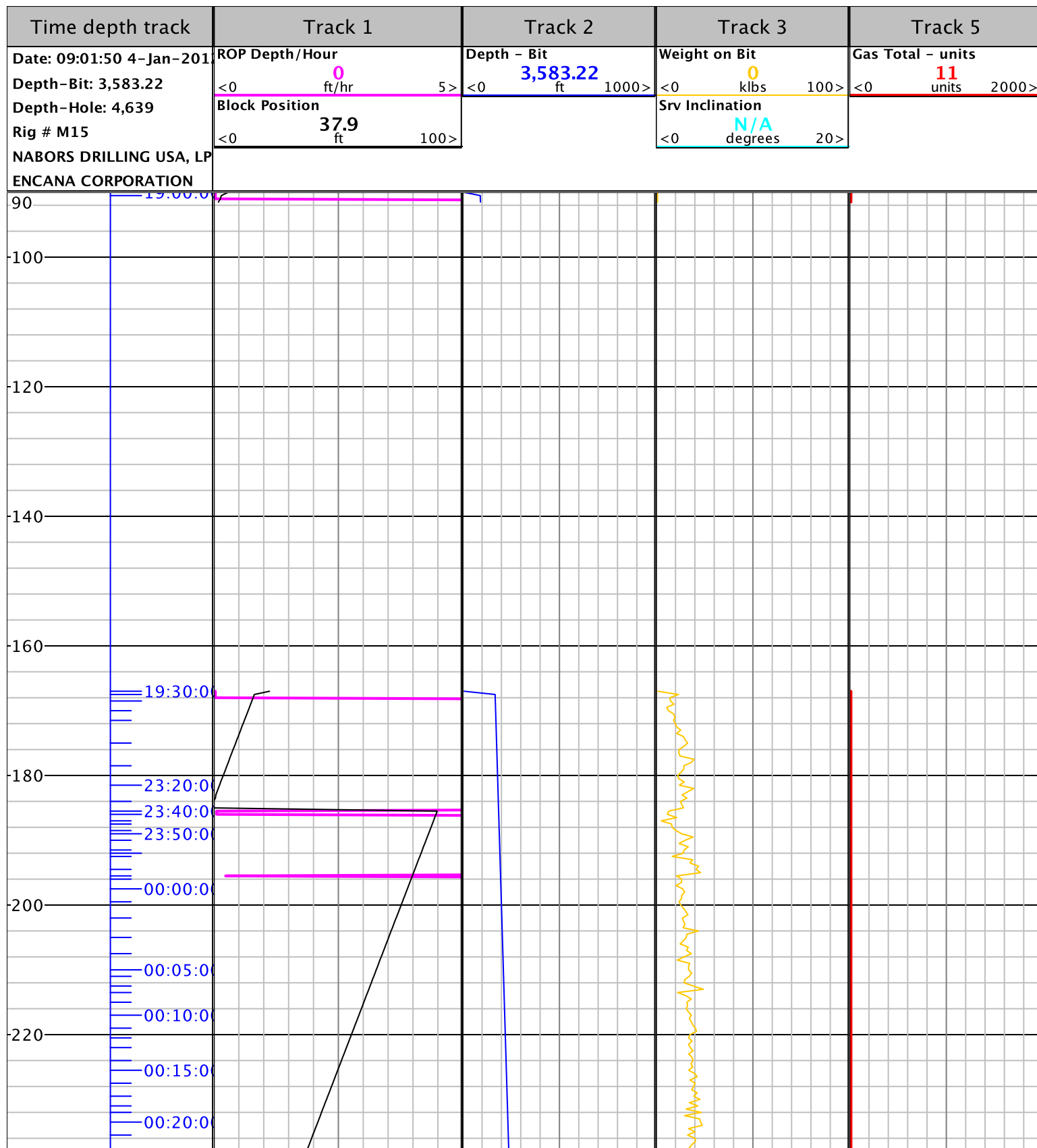
Main (281) 774-5600 / Support (866) 433-4345  
www.myWells.com

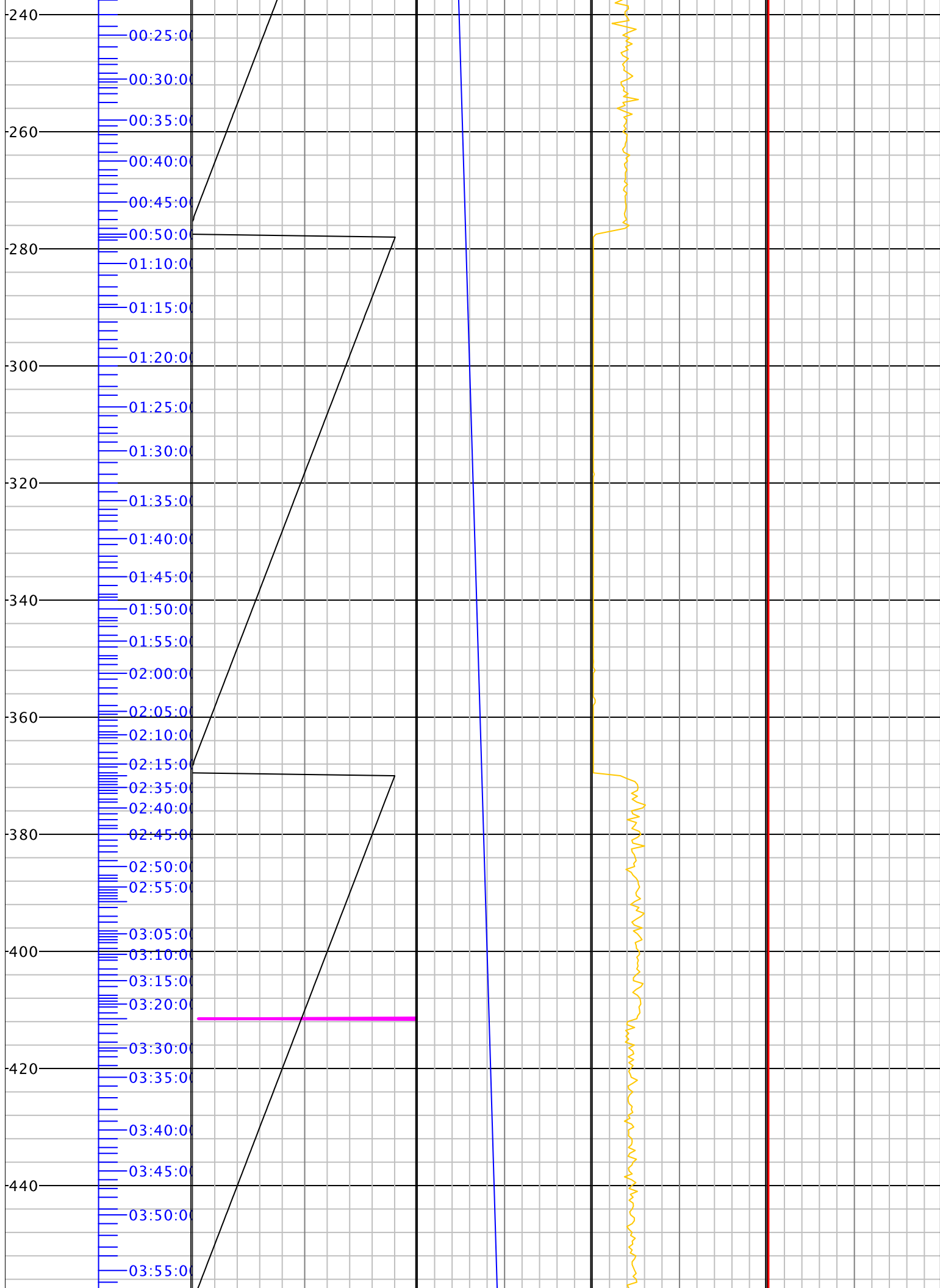
Operator  
Well  
Field  
State  
County  
Rig Number  
Spud Date  
API Number  
Contractor

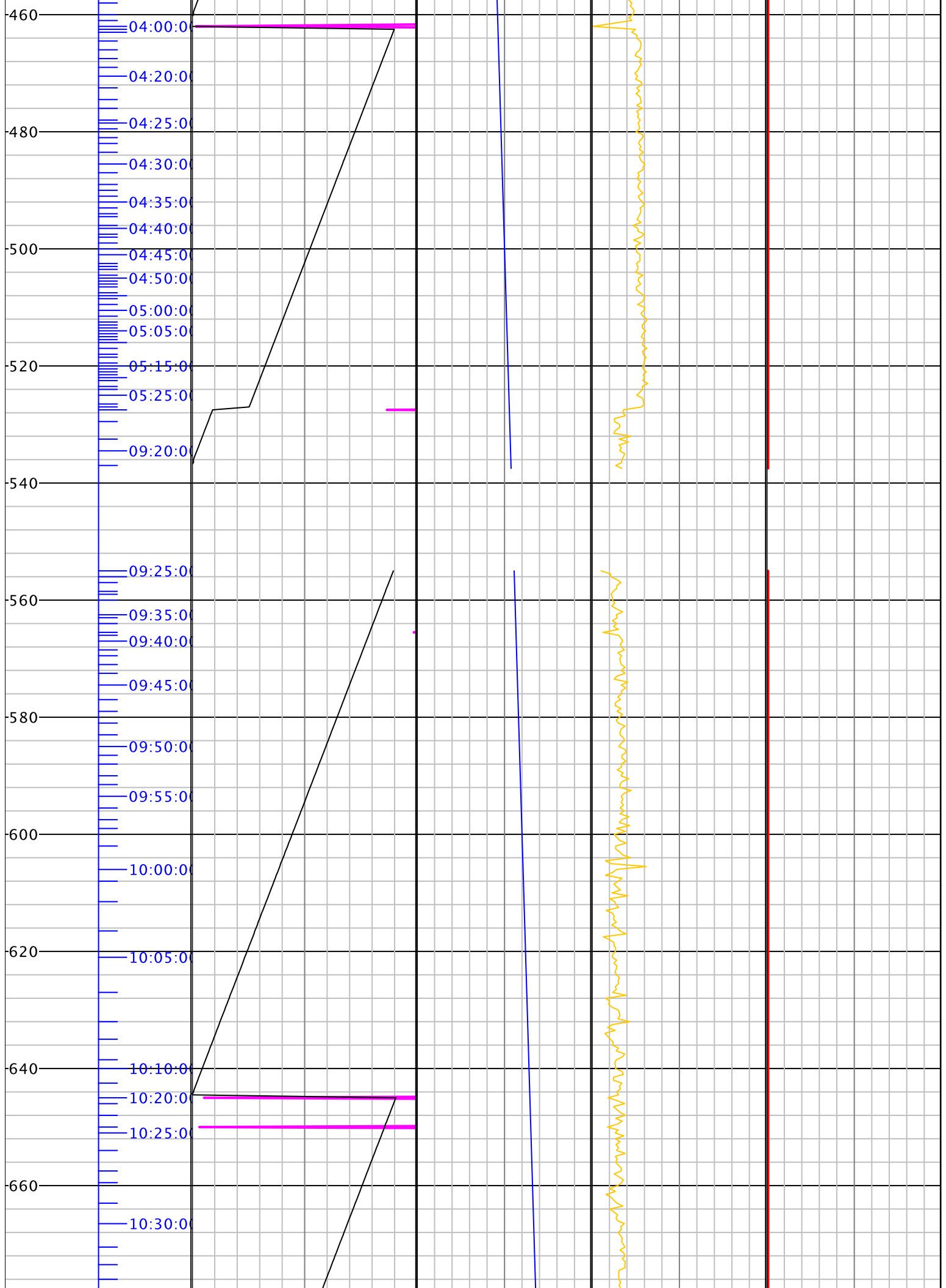
ENCANA CORPORATION  
00M15-FEDERAL 28-13BB  
HIGH MESA  
COLORADO  
GARFIELD  
M15  
2011-10-04  
NABORS DRILLING USA, LP

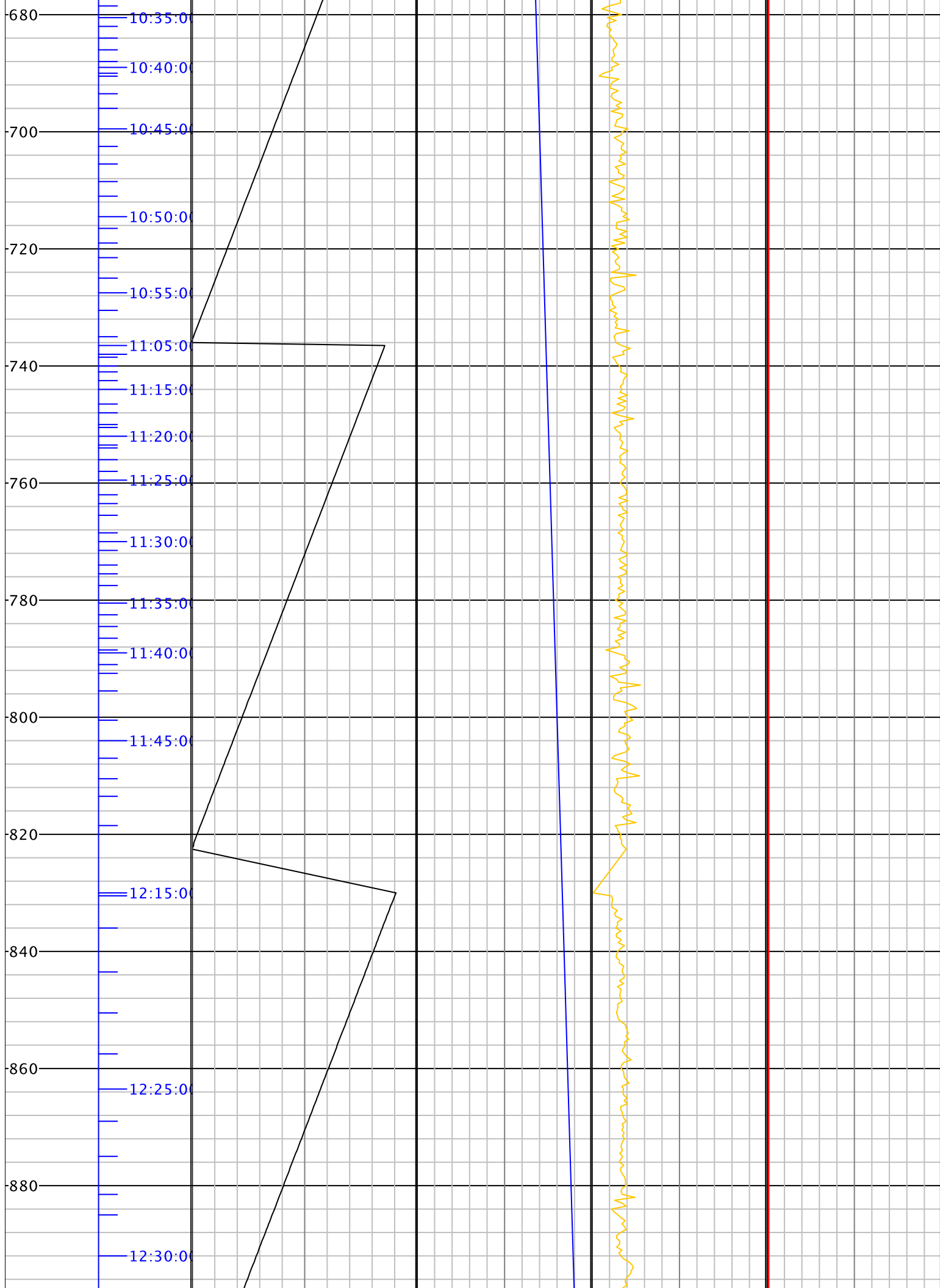
DEPTHS: 90 TO 4,639

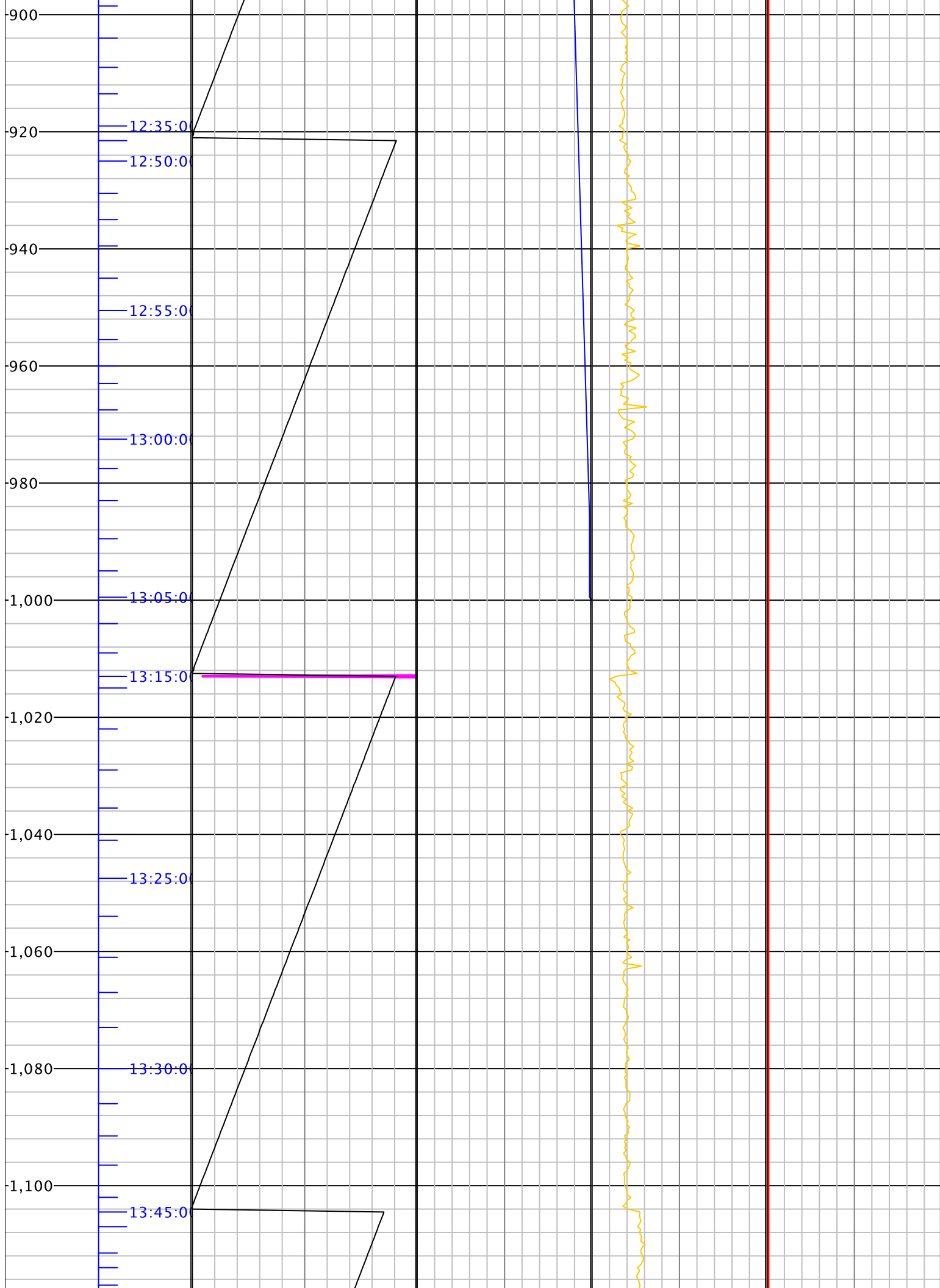
SCALE: 5"=100'

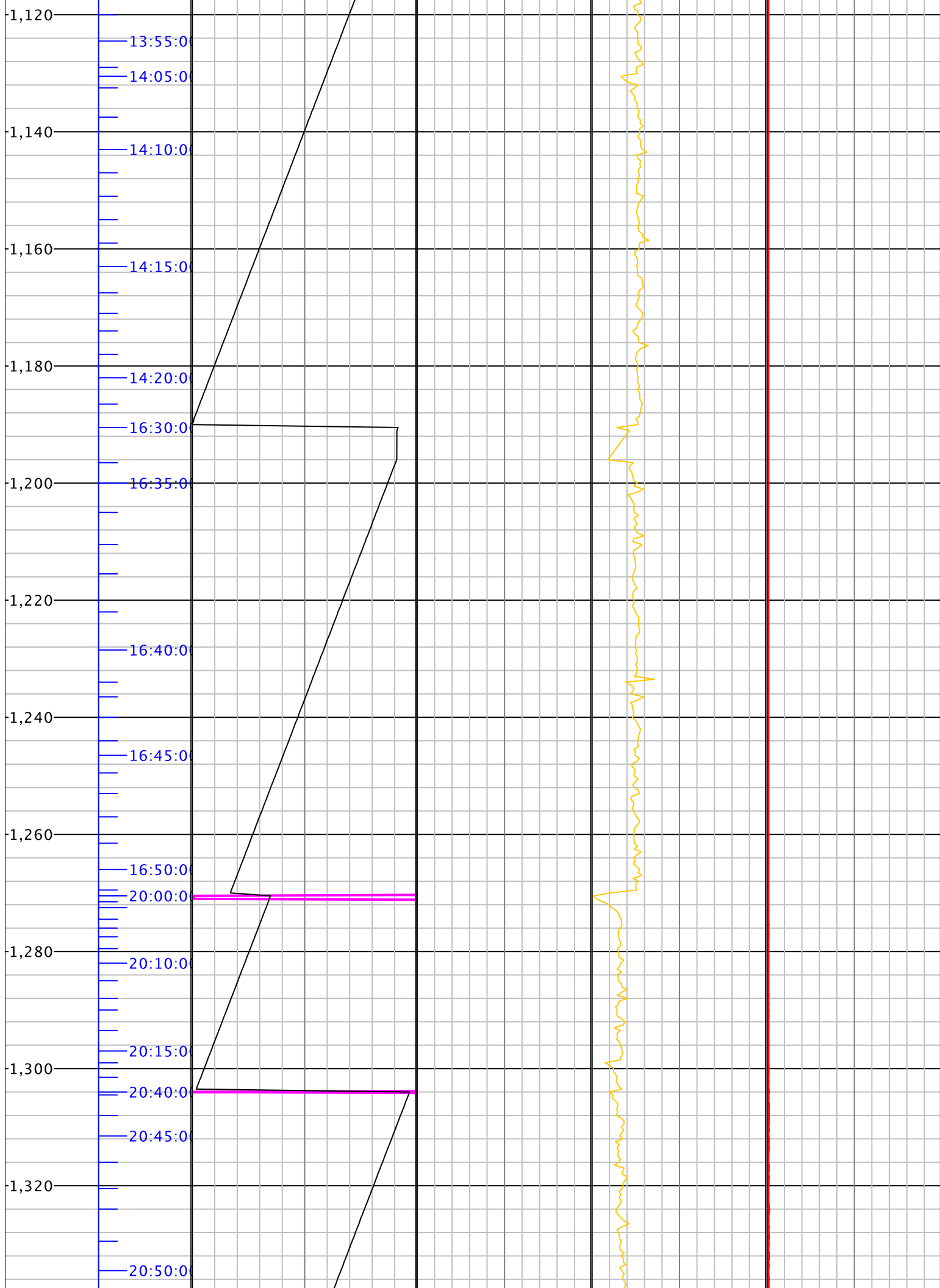


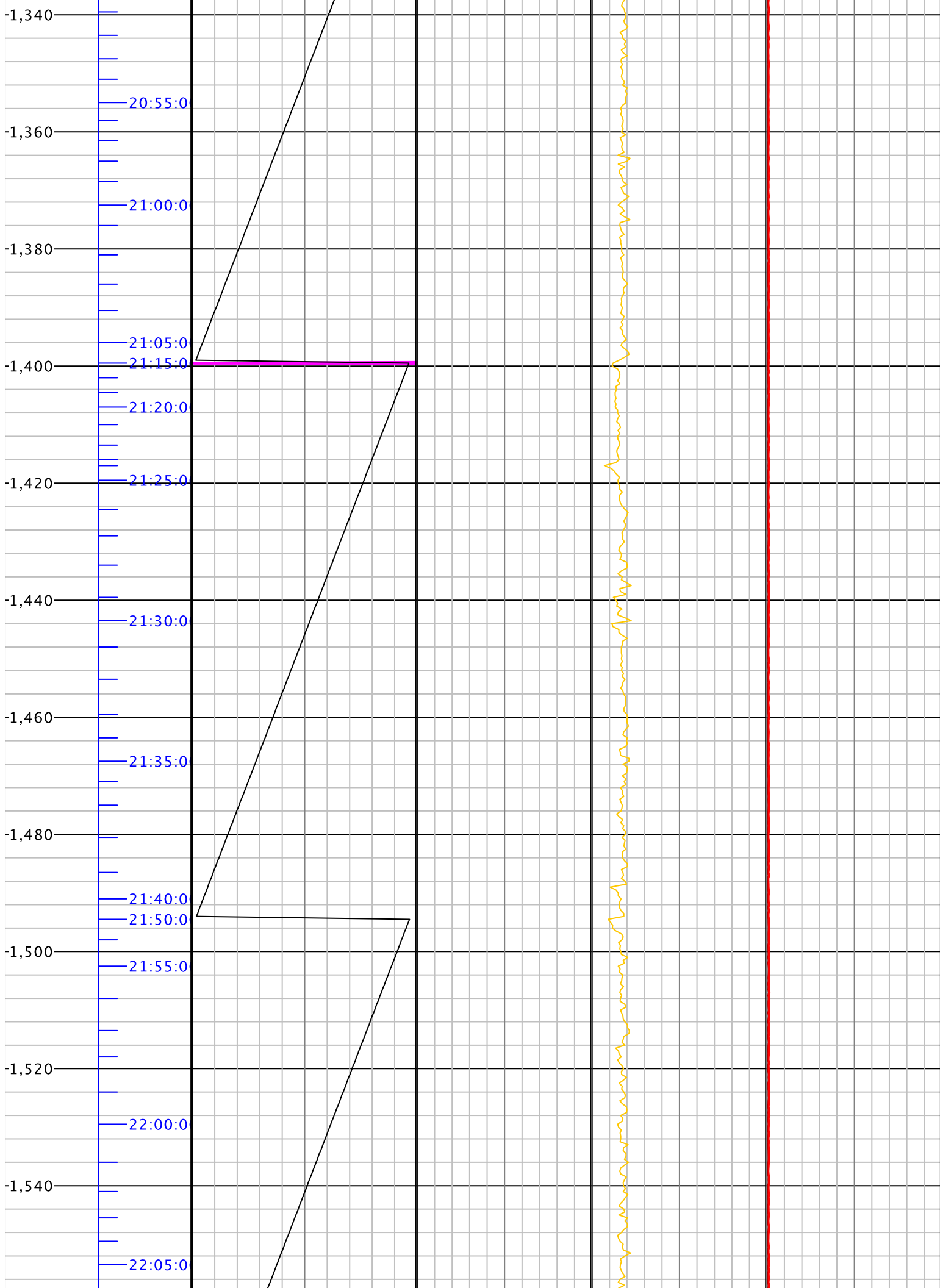


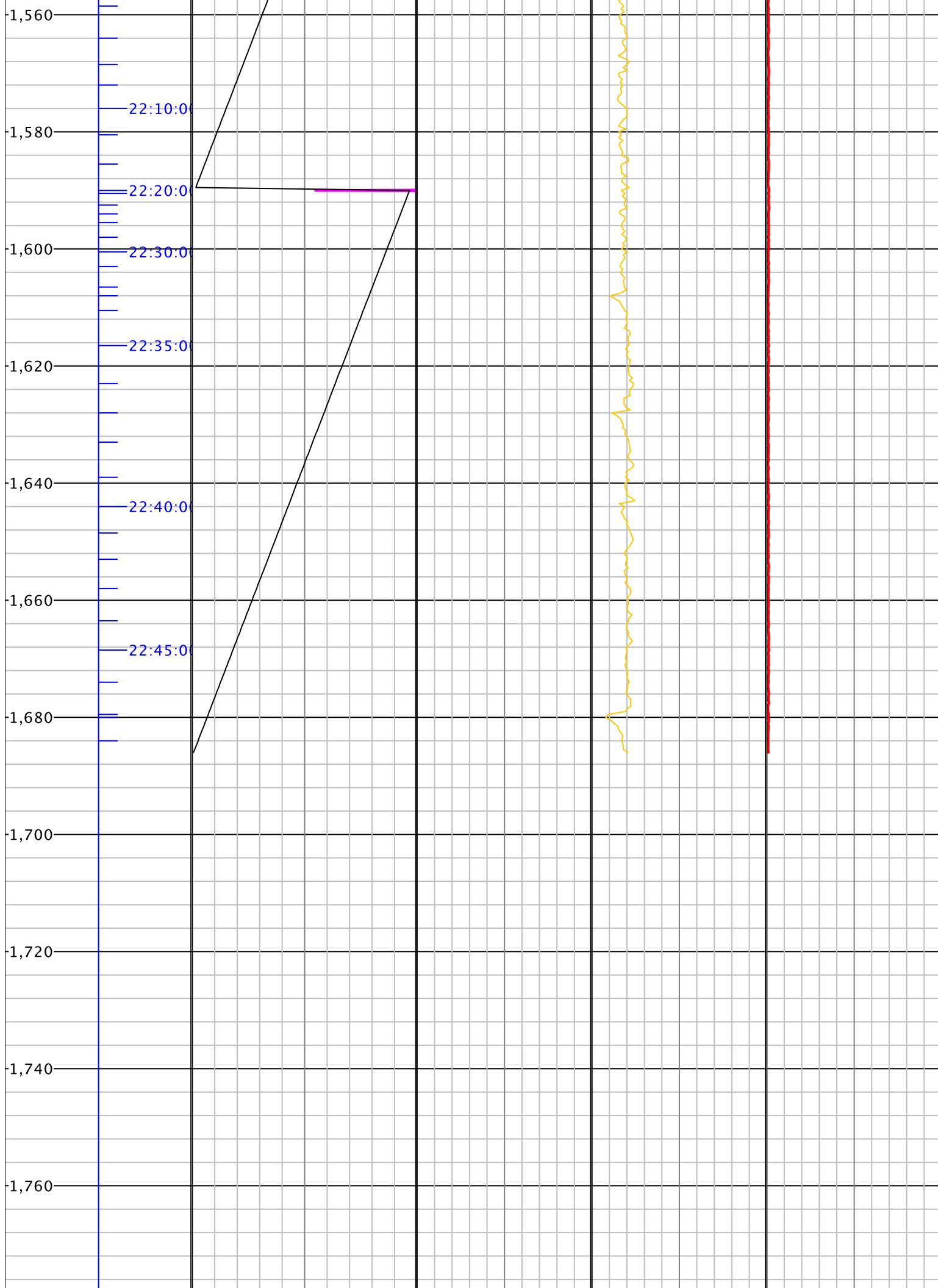


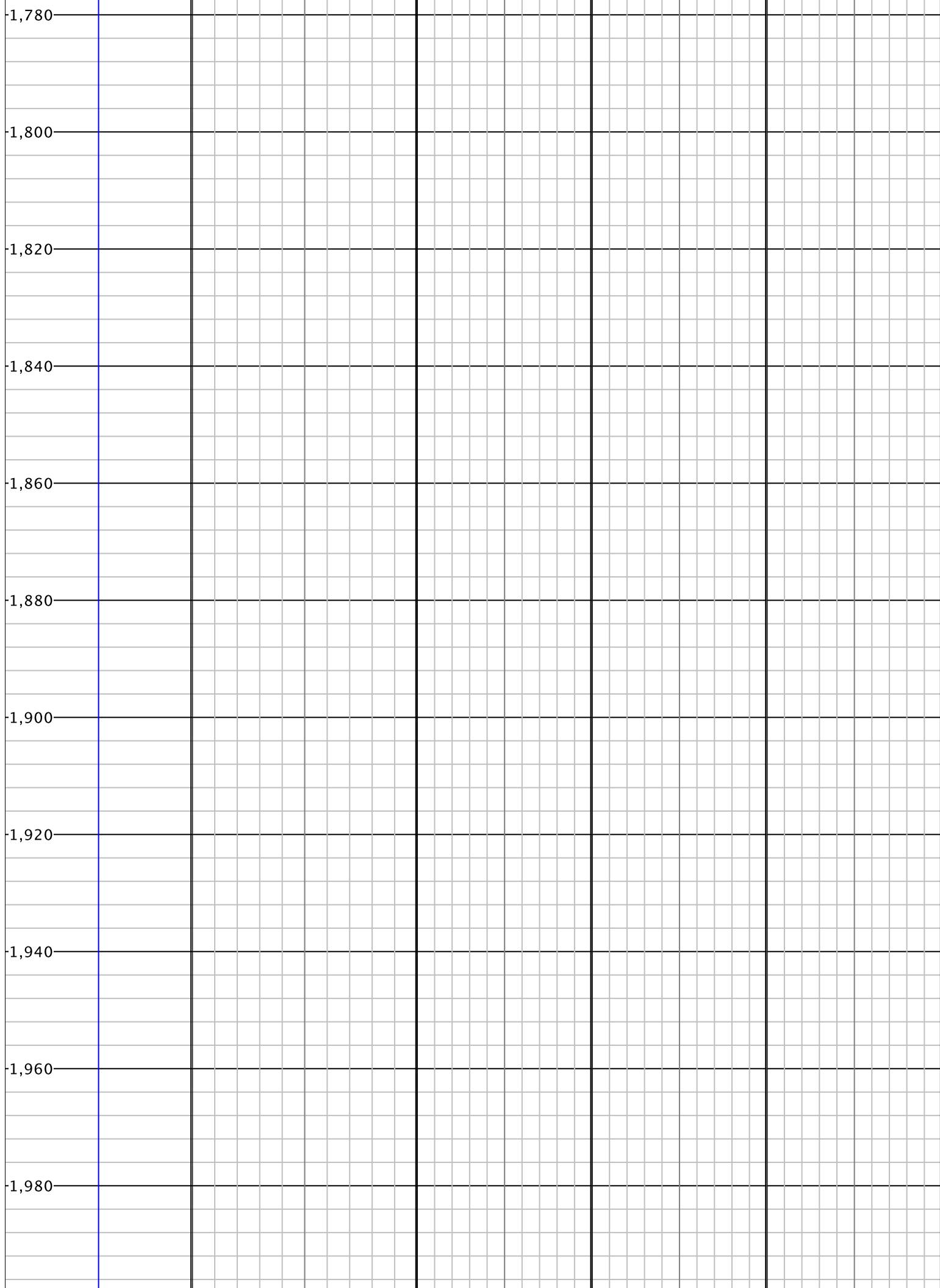


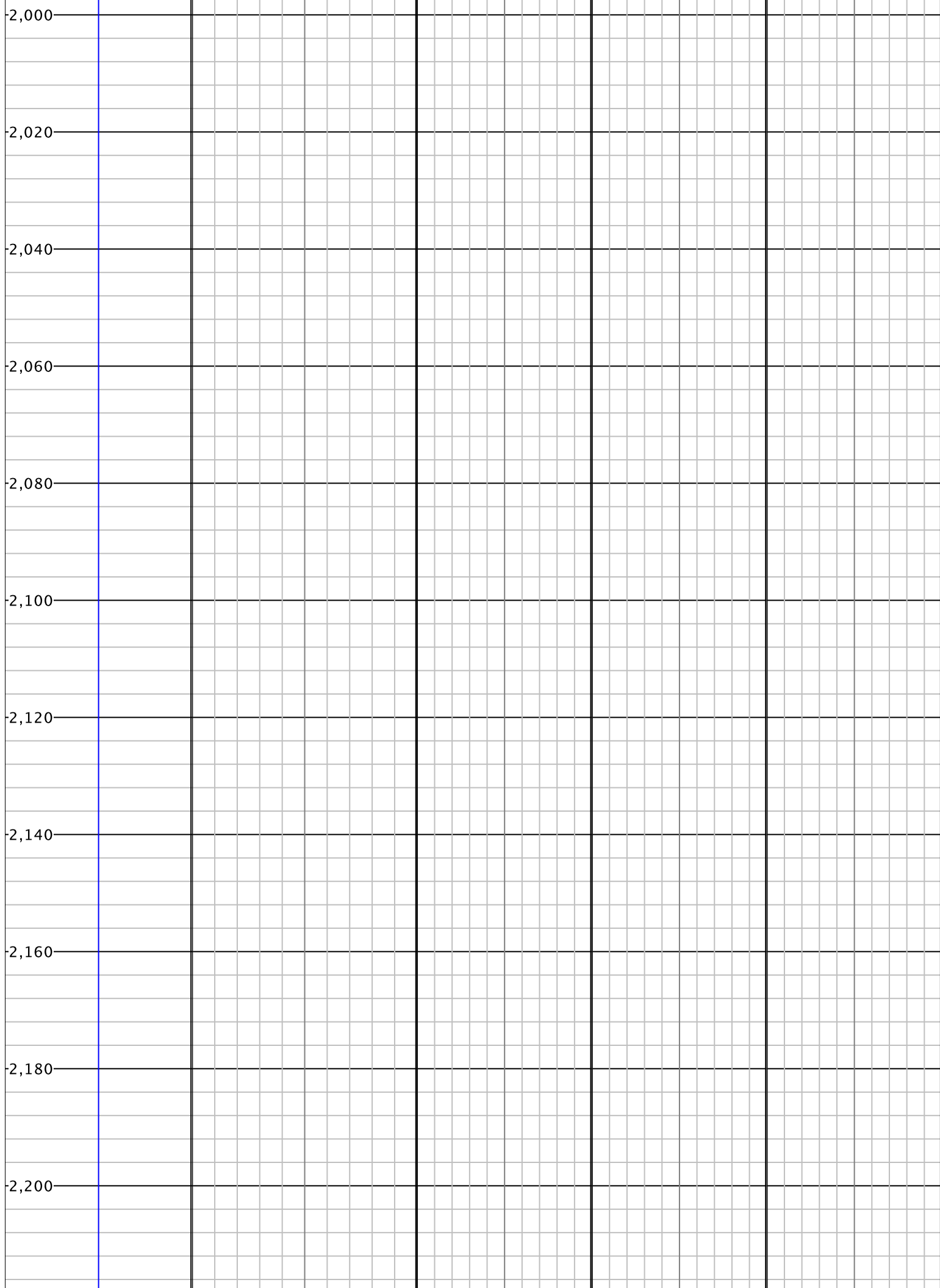


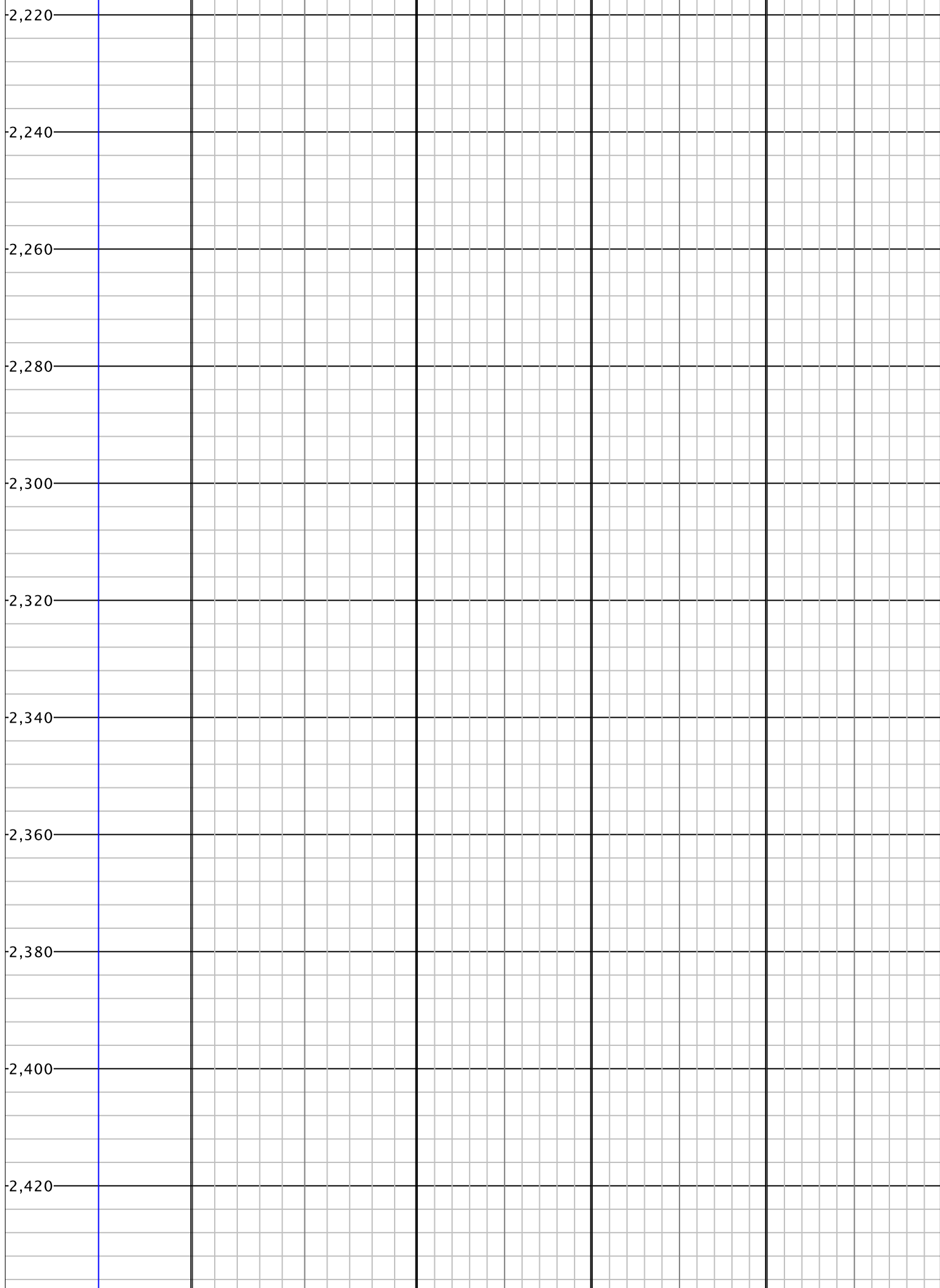


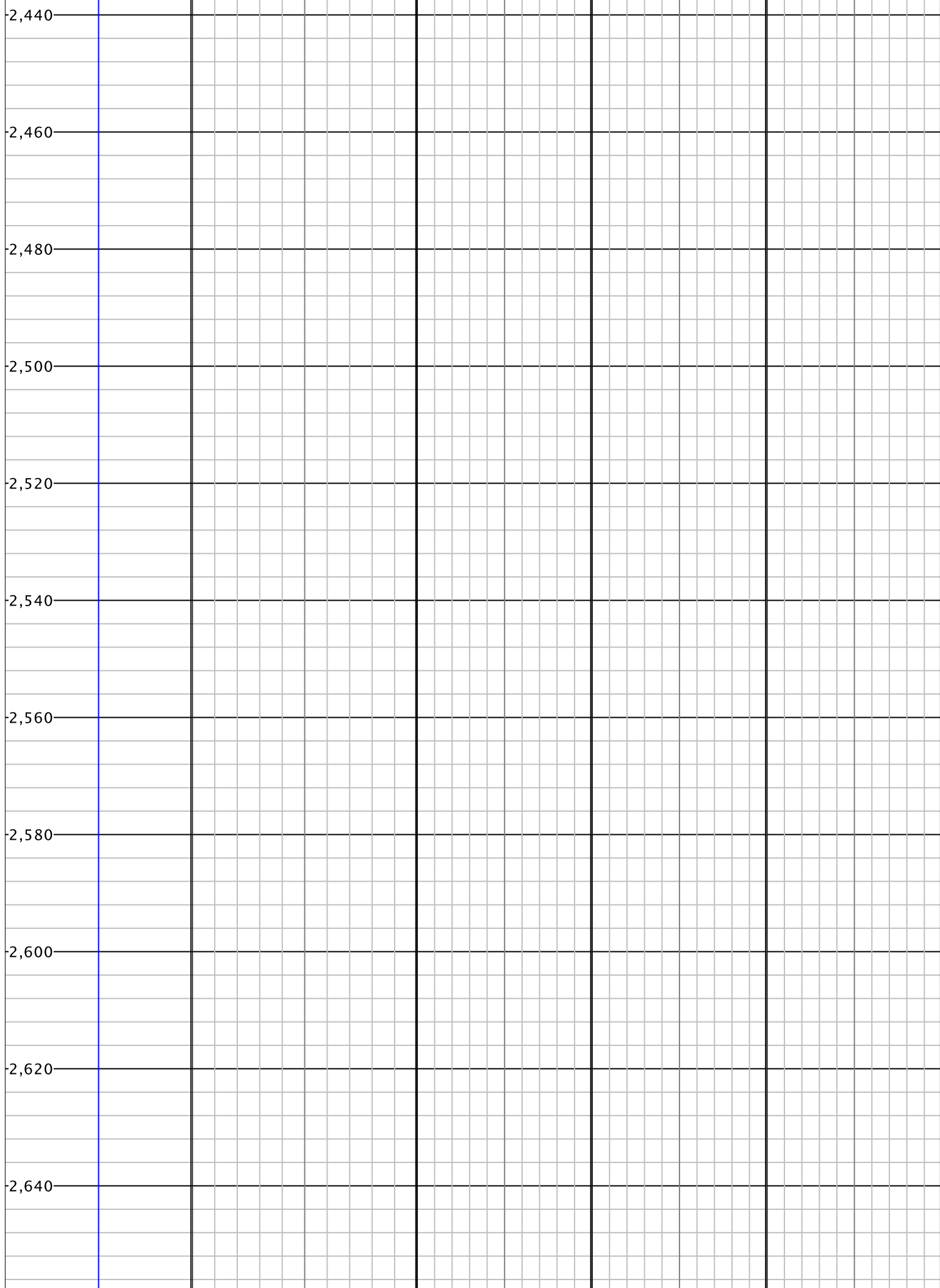


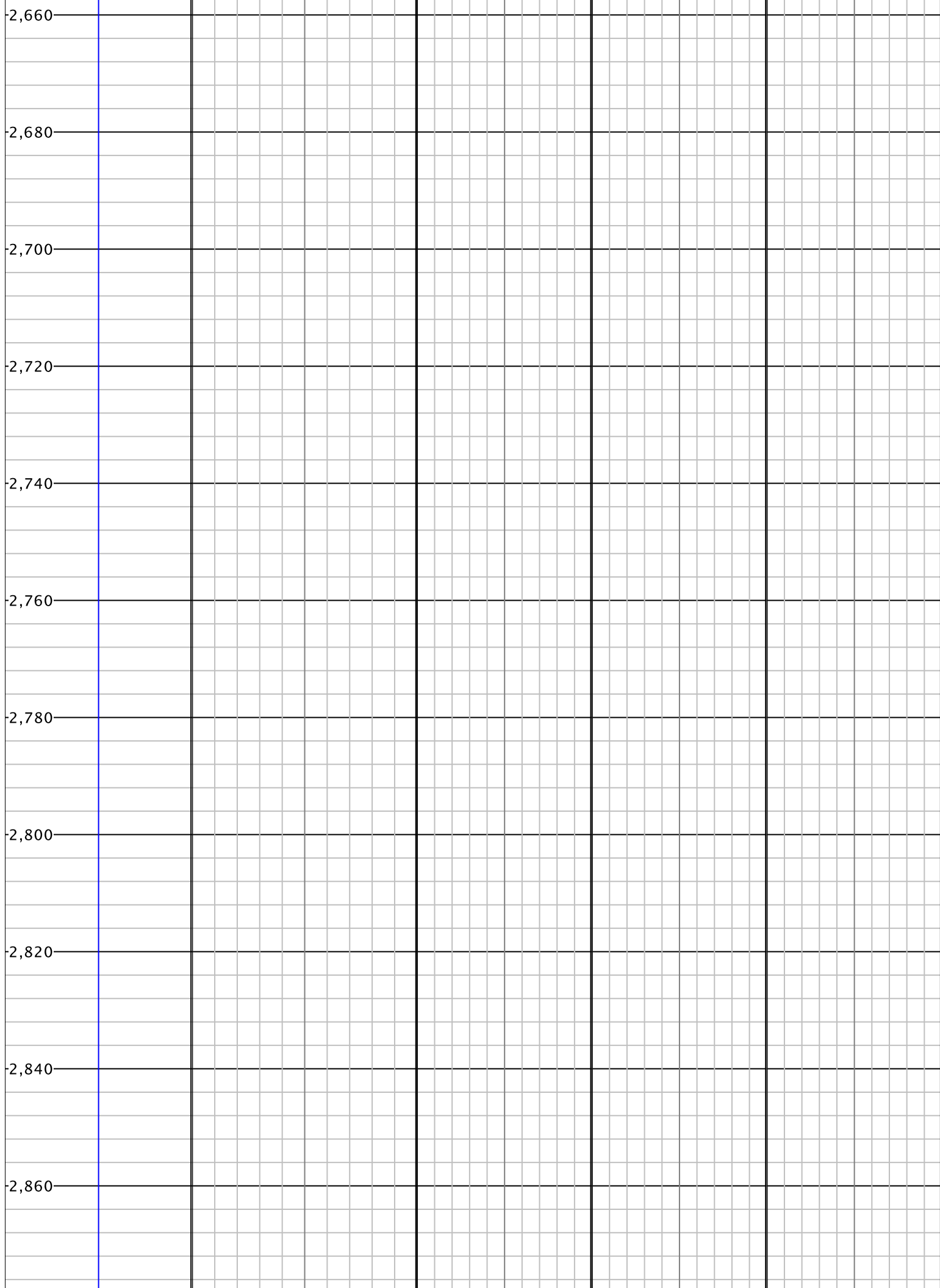


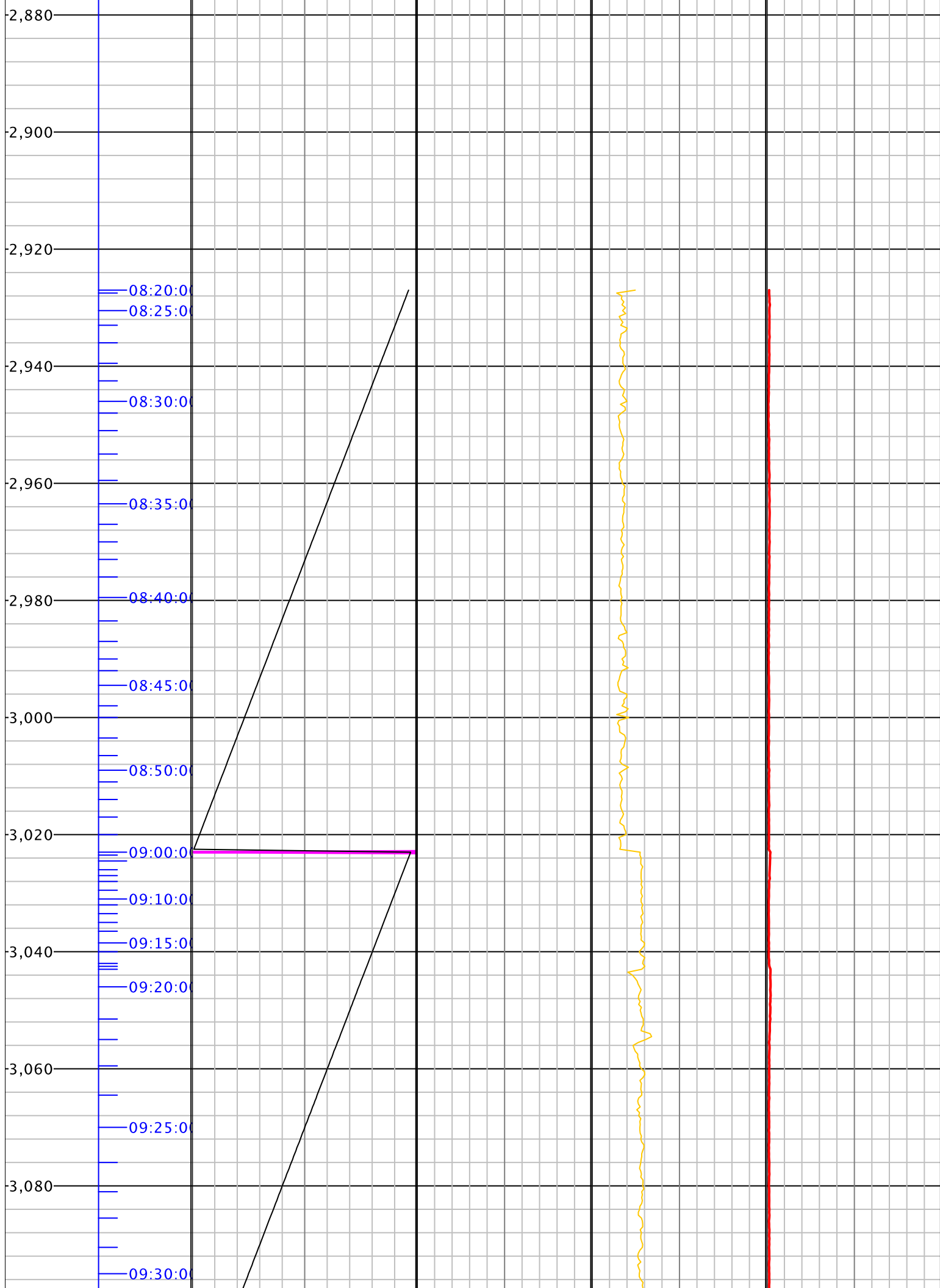


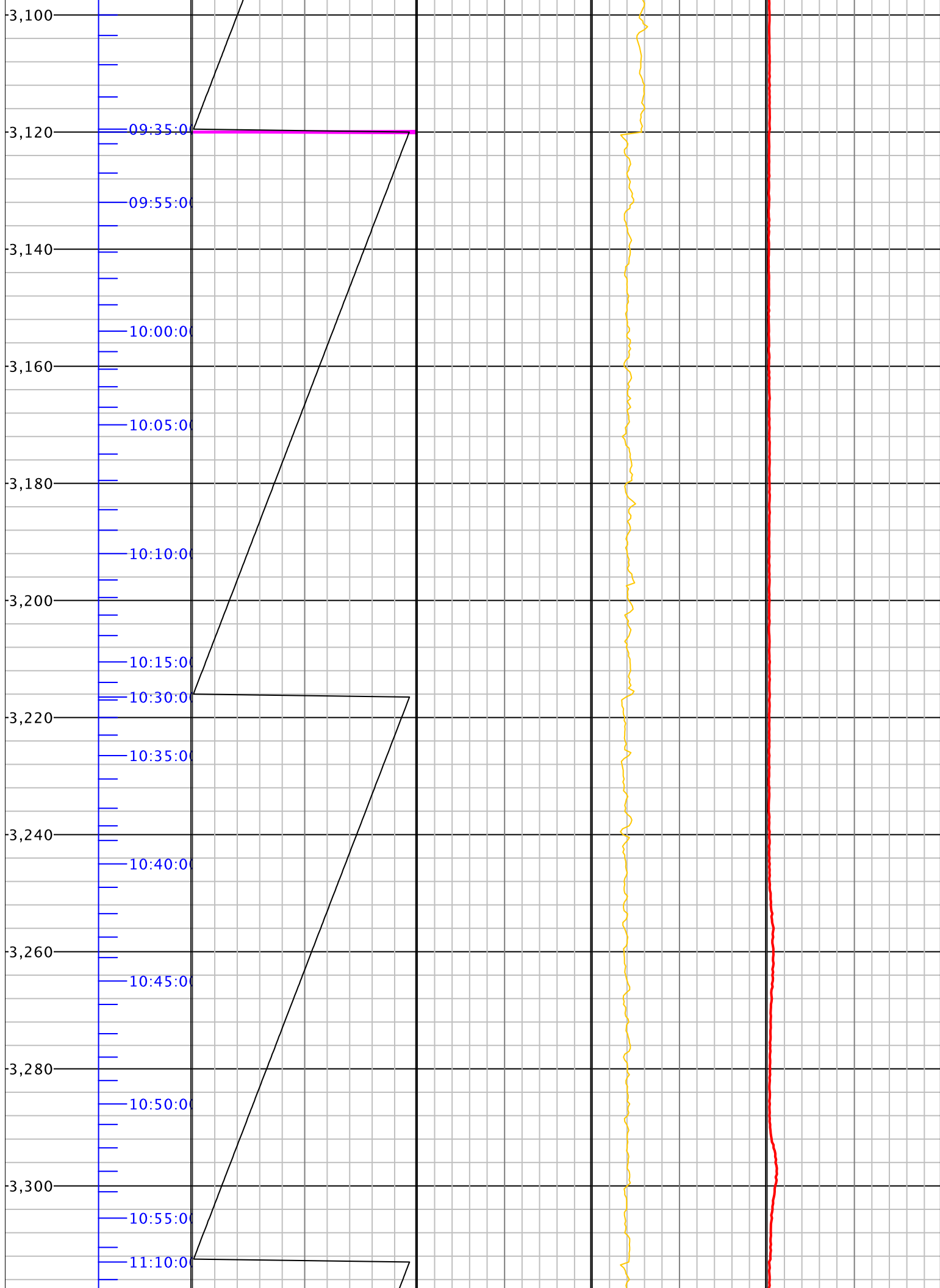


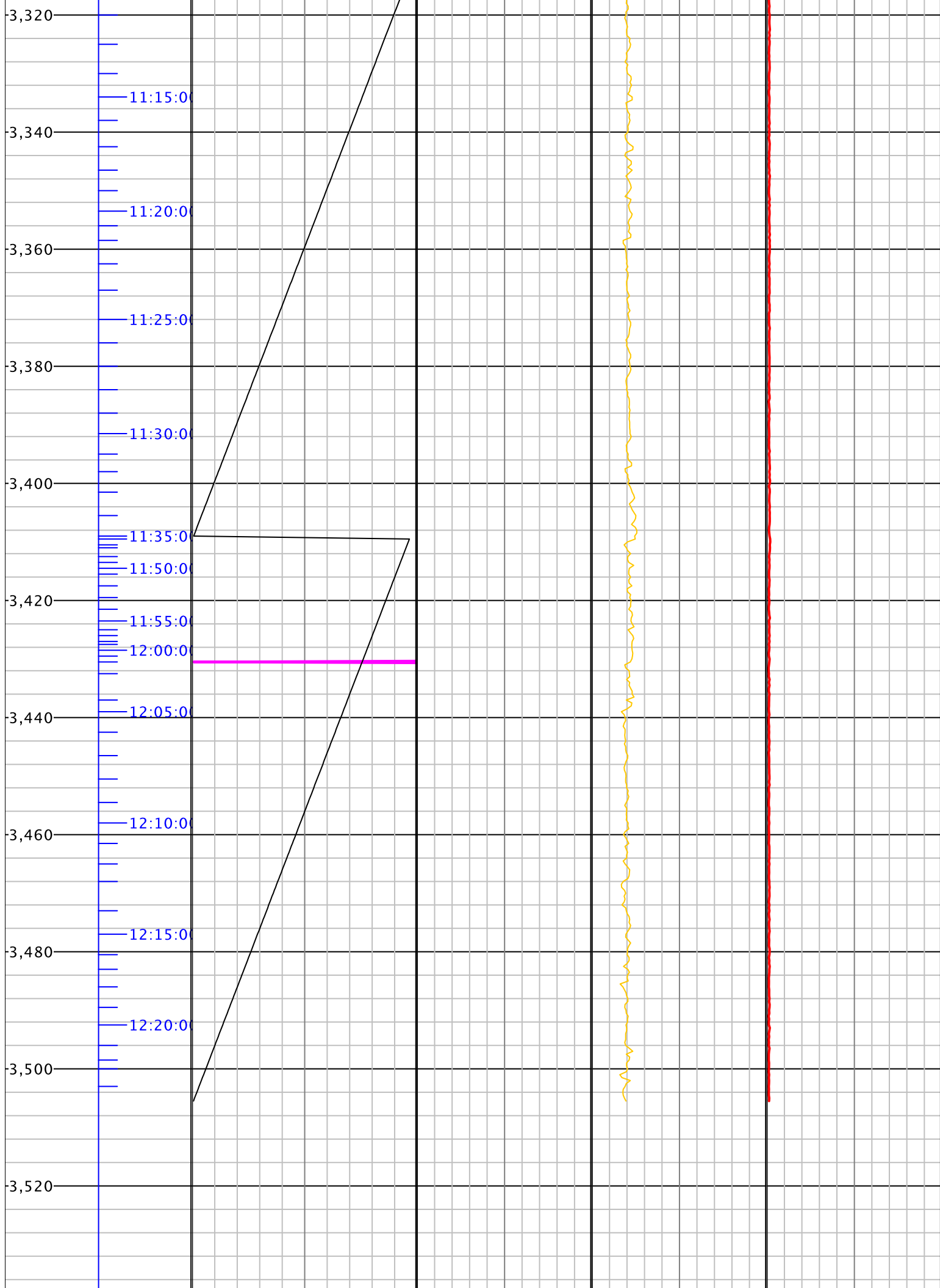


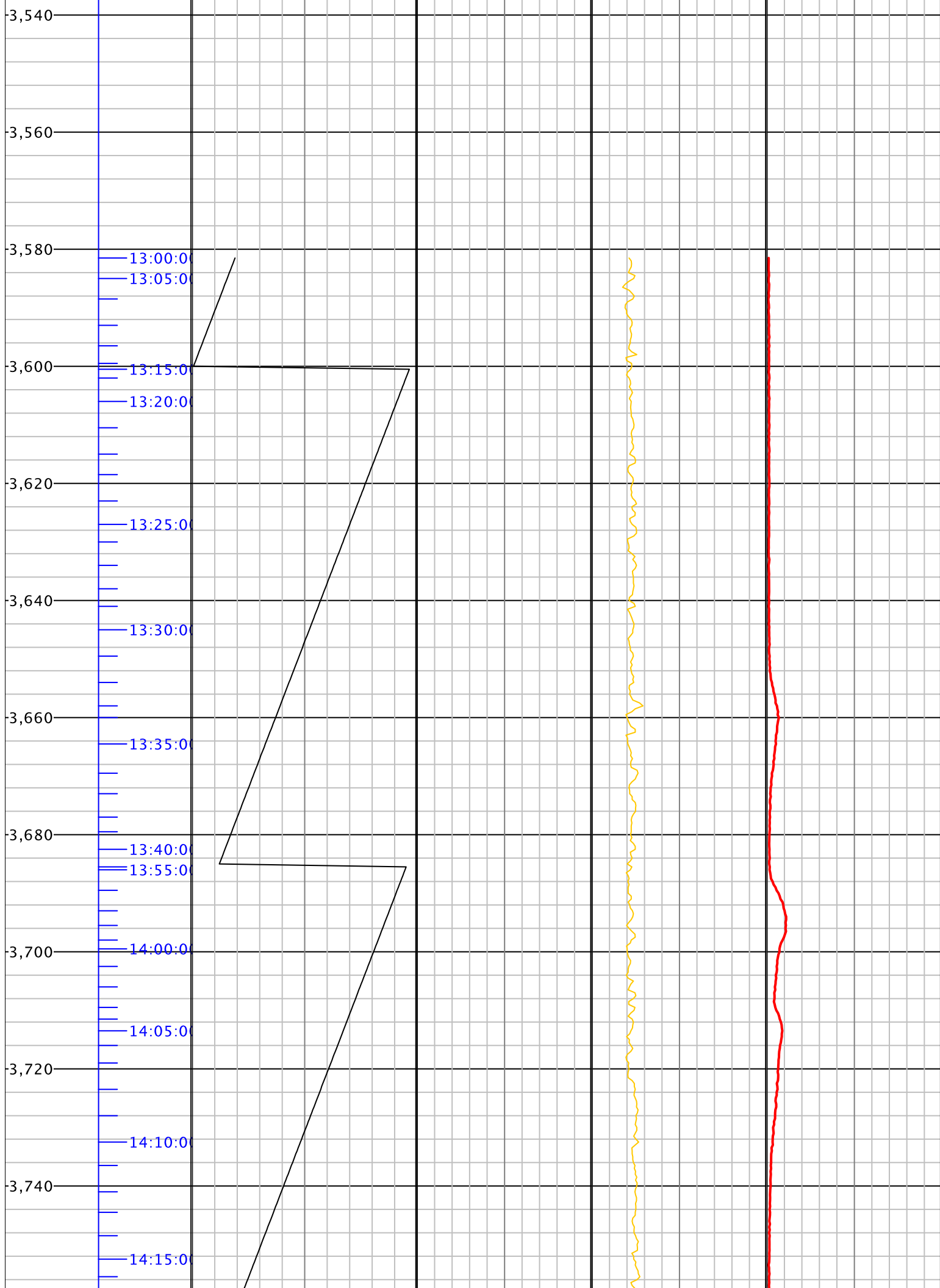


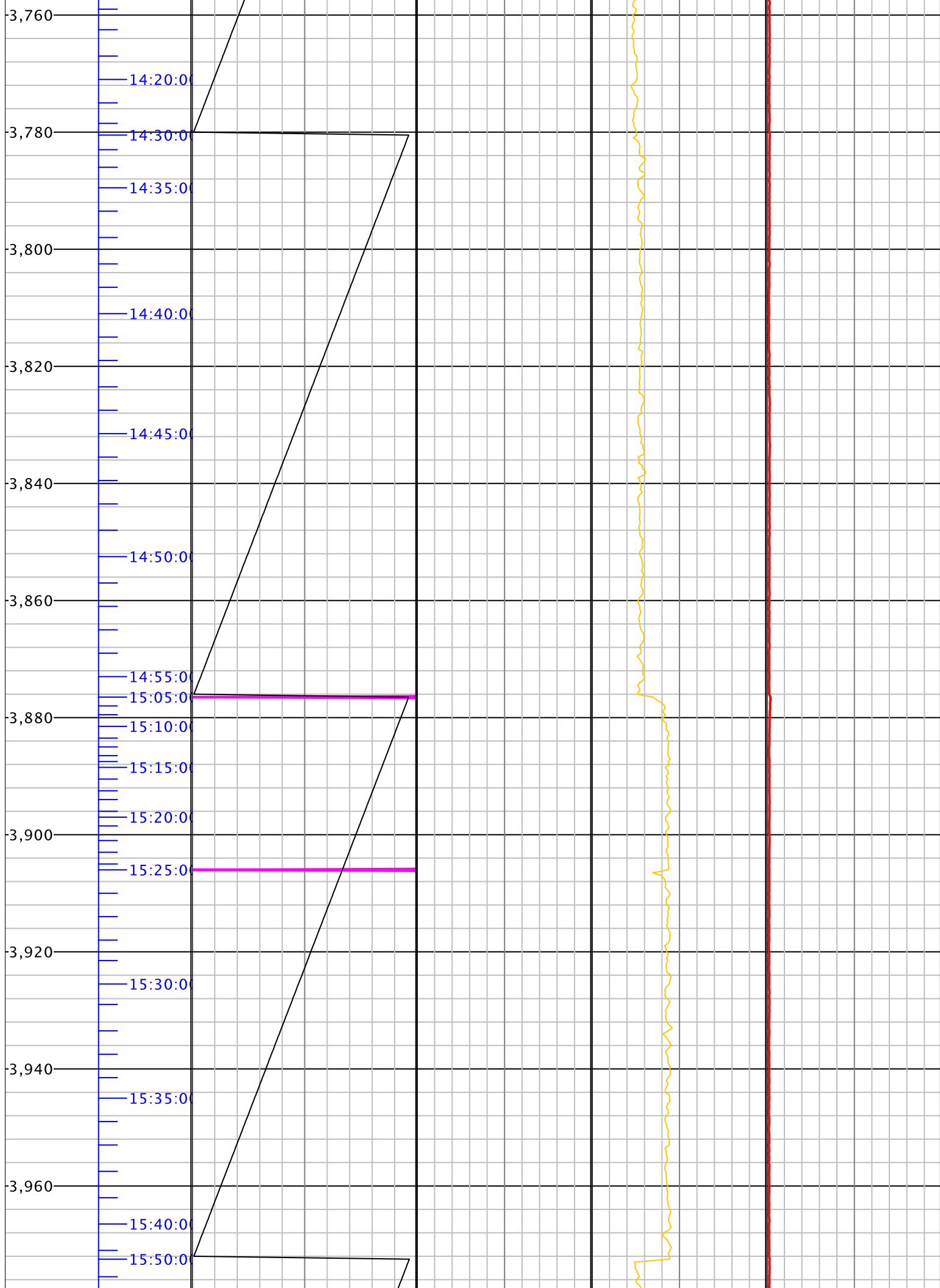




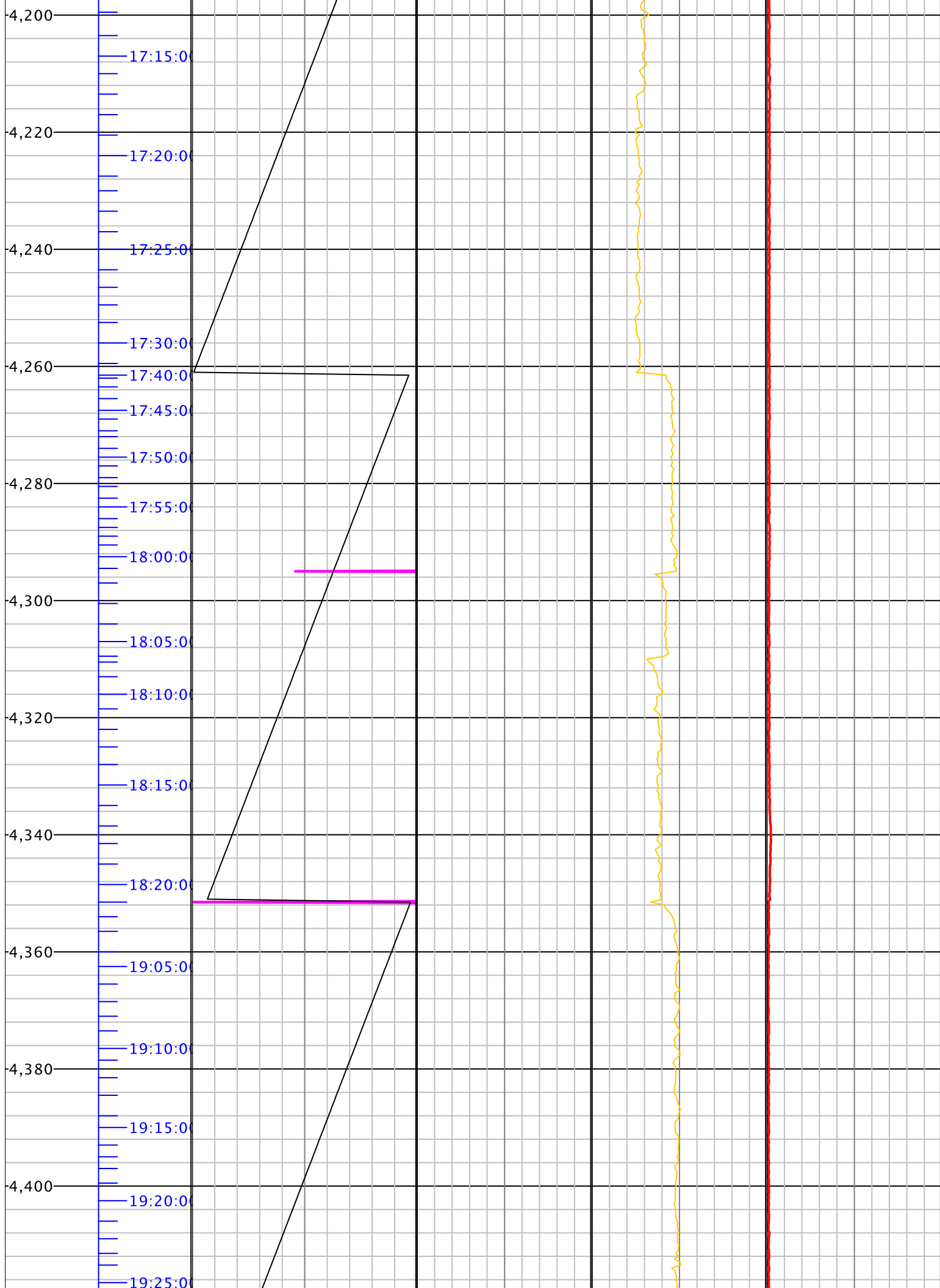


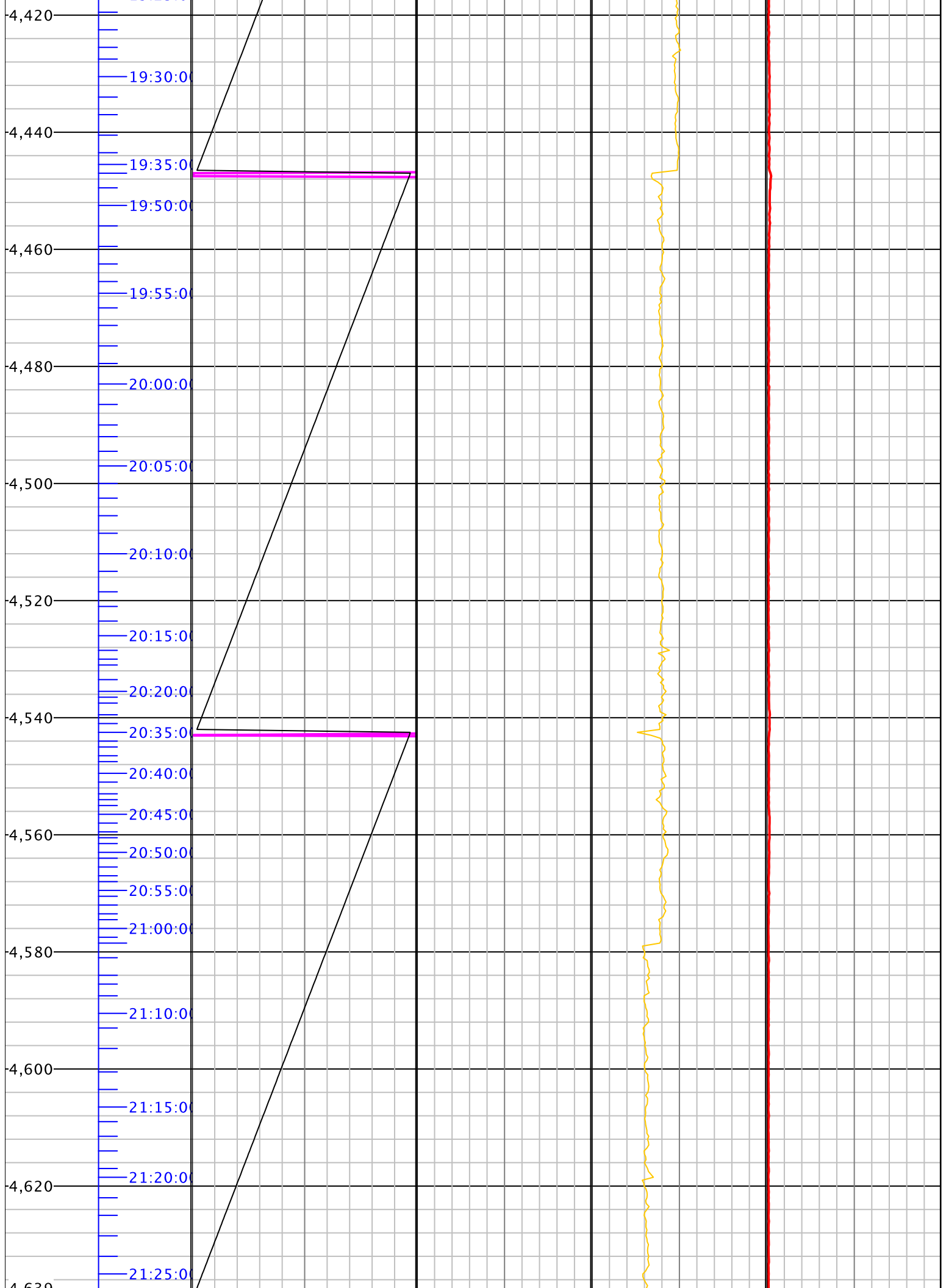












The log data, interpretations and recommendations provided by Canrig are inferences and assumptions based on measurements of drilling fluids. Such inferences and assumptions are not infallible and reasonable professionals may differ. Canrig does not represent or warrant the accuracy, correctness or completeness of any log data, interpretations, recommendations or information provided by Canrig, its officers, agents or employees. Canrig does not and cannot guarantee the accuracy of any such interpretation of the log data, interpretations or recommendations and ENCANA CORPORATION is fully responsible for all decisions and actions it takes based on such log data, interpretations and recommendations.