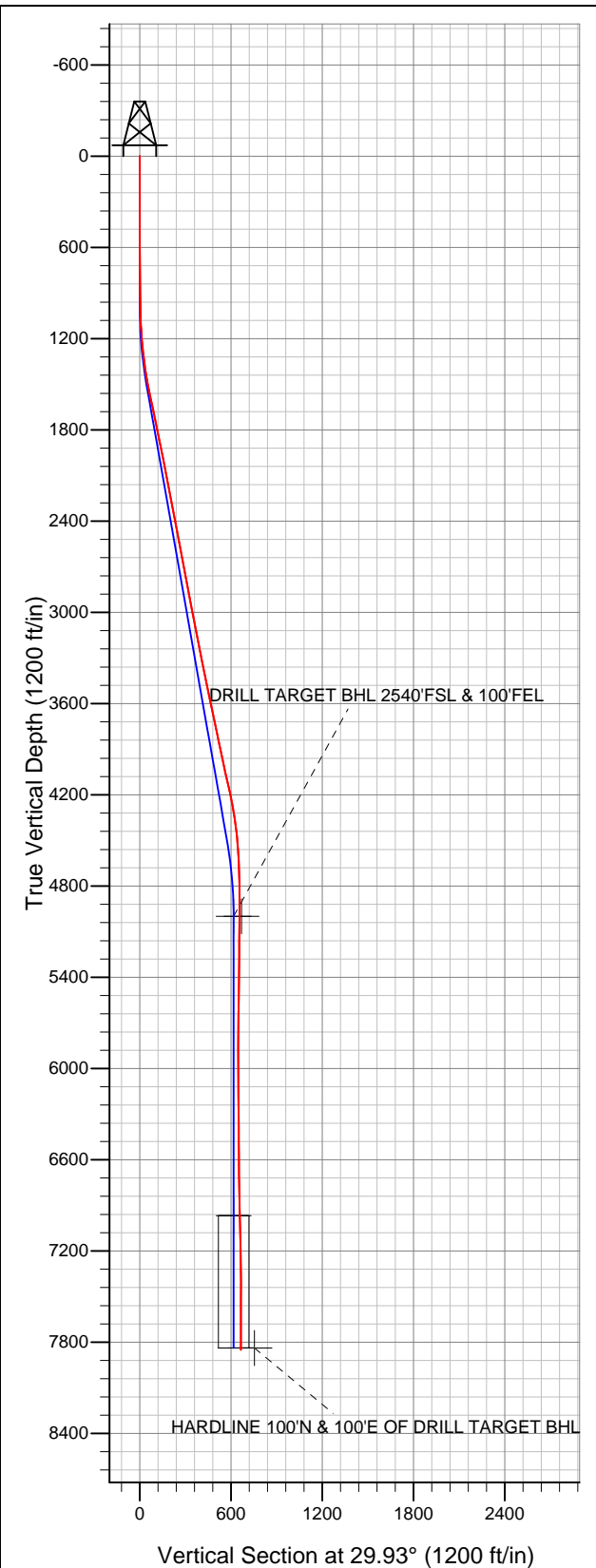


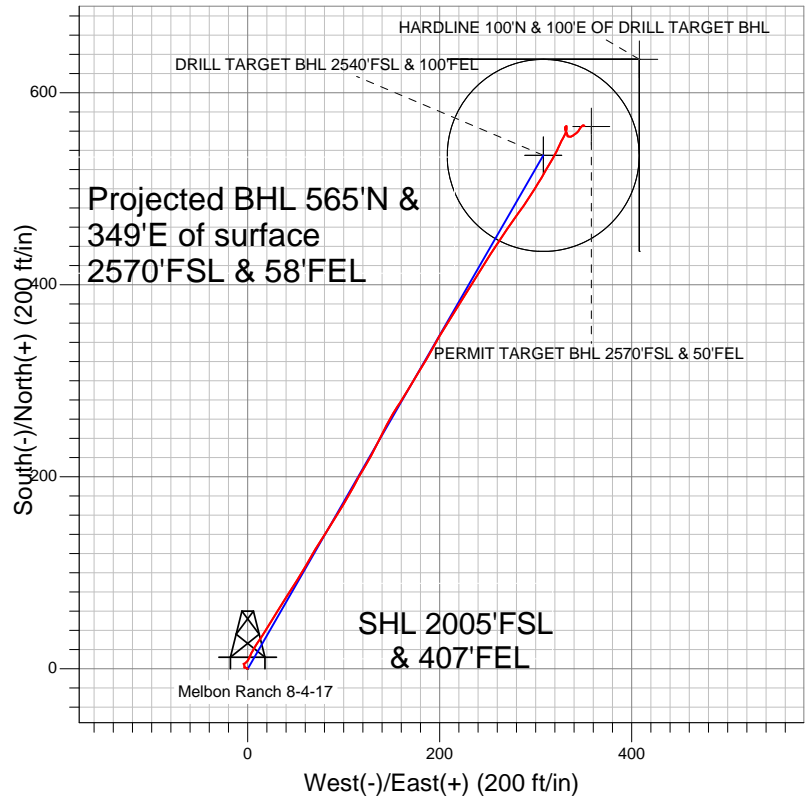
Well Name: Melbon Ranch 8-4-17

Surface Location: Melbon Ranch 8-4-17 Pad Sec.17-T2N-R65W
North American Datum 1983 US State Plane 1983 Colorado Northern Zone
Ground Elevation: 4901.0

+N/-S	+E/-W	Northing	Easting	Latitude	Longitude	Slot
0.0	0.0	1293798.52	3229297.66	40.136960	-104.679870	
		Original Well Elev	WELL @ 4914.0ft (Original Well Elev)			



EnCana Oil & Gas Weld County CO



LEGEND

- Survey #1
- + Melbon Ranch 8-4-17, Wellbore #1, Plan #2 (2-2-12) V0
- Wellbore #1

Final Survey Plot

Projected Final Survey -
7913'MD & 7851'TVD @ 664'VS
0.70 deg Inc 252.90 deg AZ

Project: SEC.17-T2N-R65W
Site: Melbon Ranch 8-4-17 Pad Sec.17-T2N-R65W
Well: Melbon Ranch 8-4-17
Plan: Wellbore #1



EnCana Oil & Gas Weld County CO

SEC.17-T2N-R65W

Melbon Ranch 8-4-17 Pad Sec.17-T2N-R65W

Melbon Ranch 8-4-17

Wellbore #1

Survey: Survey #1

Standard Survey Report

13 February, 2012

Company:	EnCana Oil & Gas Weld County CO	Local Co-ordinate Reference:	Well Melbon Ranch 8-4-17
Project:	SEC.17-T2N-R65W	TVD Reference:	WELL @ 4914.0ft (Original Well Elev)
Site:	Melbon Ranch 8-4-17 Pad Sec.17-T2N-R65W	MD Reference:	WELL @ 4914.0ft (Original Well Elev)
Well:	Melbon Ranch 8-4-17	North Reference:	True
Wellbore:	Wellbore #1	Survey Calculation Method:	Minimum Curvature
Design:	Wellbore #1	Database:	Landmark

Project	SEC.17-T2N-R65W, Weld County, Colorado		
Map System:	US State Plane 1983	System Datum:	Mean Sea Level
Geo Datum:	North American Datum 1983		Using Well Reference Point
Map Zone:	Colorado Northern Zone		Using geodetic scale factor

Site	Melbon Ranch 8-4-17 Pad Sec.17-T2N-R65W				
Site Position:		Northing:	1,293,798.52 ft	Latitude:	40.136960
From:	Lat/Long	Easting:	3,229,297.66 ft	Longitude:	-104.679870
Position Uncertainty:	0.0 ft	Slot Radius:	"	Grid Convergence:	0.53 °

Well	Melbon Ranch 8-4-17					
Well Position	+N-S	0.0 ft	Northing:	1,293,798.52 ft	Latitude:	40.136960
	+E-W	0.0 ft	Easting:	3,229,297.66 ft	Longitude:	-104.679870
Position Uncertainty		0.0 ft	Wellhead Elevation:	ft	Ground Level:	4,901.0 ft

Wellbore	Wellbore #1				
Magnetics	Model Name	Sample Date	Declination (°)	Dip Angle (°)	Field Strength (nT)
	IGRF2010	1/17/2012	8.72	66.83	52,939

Design	Wellbore #1				
Audit Notes:					
Version:	1.0	Phase:	ACTUAL	Tie On Depth:	0.0
Vertical Section:	Depth From (TVD) (ft)	+N/-S (ft)	+E/-W (ft)	Direction (°)	
	0.0	0.0	0.0	29.93	

Survey Program		Date	2/13/2012		
From (ft)	To (ft)	Survey (Wellbore)	Tool Name	Description	
94.0	7,913.0	Survey #1 (Wellbore #1)	MWD	MWD - Standard	

Survey									
Measured Depth (ft)	Inclination (°)	Azimuth (°)	Vertical Depth (ft)	+N/-S (ft)	+E/-W (ft)	Vertical Section (ft)	Dogleg Rate (°/100ft)	Build Rate (°/100ft)	Turn Rate (°/100ft)
0.0	0.00	0.00	0.0	0.0	0.0	0.0	0.00	0.00	0.00
94.0	0.50	287.90	94.0	0.1	-0.4	-0.1	0.53	0.53	0.00
185.0	0.10	257.20	185.0	0.2	-0.8	-0.2	0.46	-0.44	-33.74
277.0	0.40	356.90	277.0	0.5	-0.9	0.0	0.47	0.33	108.37
369.0	0.70	284.20	369.0	1.0	-1.5	0.1	0.76	0.33	-79.02
460.0	0.80	265.00	460.0	1.1	-2.7	-0.4	0.30	0.11	-21.10
551.0	0.30	338.50	551.0	1.2	-3.4	-0.6	0.85	-0.55	80.77
643.0	0.80	13.70	643.0	2.1	-3.3	0.1	0.63	0.54	38.26
737.0	1.00	337.50	737.0	3.5	-3.5	1.3	0.63	0.21	-38.51
841.0	0.70	334.20	841.0	4.9	-4.1	2.2	0.29	-0.29	-3.17
921.0	0.70	119.20	921.0	5.1	-3.9	2.5	1.67	0.00	181.25
1,015.0	1.90	47.50	1,014.9	5.9	-2.2	4.0	1.92	1.28	-76.28
1,109.0	2.60	36.40	1,108.9	8.6	0.2	7.6	0.87	0.74	-11.81

Company:	EnCana Oil & Gas Weld County CO	Local Co-ordinate Reference:	Well Melbon Ranch 8-4-17
Project:	SEC.17-T2N-R65W	TVD Reference:	WELL @ 4914.0ft (Original Well Elev)
Site:	Melbon Ranch 8-4-17 Pad Sec.17-T2N-R65W	MD Reference:	WELL @ 4914.0ft (Original Well Elev)
Well:	Melbon Ranch 8-4-17	North Reference:	True
Wellbore:	Wellbore #1	Survey Calculation Method:	Minimum Curvature
Design:	Wellbore #1	Database:	Landmark

Survey										
Measured Depth (ft)	Inclination (°)	Azimuth (°)	Vertical Depth (ft)	+N-S (ft)	+E-W (ft)	Vertical Section (ft)	Dogleg Rate (°/100ft)	Build Rate (°/100ft)	Turn Rate (°/100ft)	
1,202.0	4.30	22.00	1,201.7	13.6	2.7	13.1	2.04	1.83	-15.48	
1,296.0	6.60	31.40	1,295.3	21.4	6.9	22.0	2.62	2.45	10.00	
1,389.0	8.00	33.80	1,387.5	31.4	13.2	33.8	1.54	1.51	2.58	
1,483.0	10.40	31.50	1,480.3	44.1	21.3	48.8	2.58	2.55	-2.45	
1,577.0	11.70	31.80	1,572.5	59.4	30.8	66.8	1.38	1.38	0.32	
1,670.0	12.20	32.80	1,663.5	75.7	41.1	86.1	0.58	0.54	1.08	
1,764.0	11.70	32.50	1,755.5	92.1	51.6	105.5	0.54	-0.53	-0.32	
1,858.0	11.40	29.20	1,847.6	108.2	61.2	124.3	0.77	-0.32	-3.51	
1,951.0	11.40	29.90	1,938.8	124.2	70.3	142.7	0.15	0.00	0.75	
2,045.0	11.40	33.90	2,030.9	140.0	80.1	161.3	0.84	0.00	4.26	
2,139.0	11.10	32.60	2,123.1	155.3	90.2	179.6	0.42	-0.32	-1.38	
2,232.0	10.60	30.40	2,214.4	170.2	99.3	197.1	0.70	-0.54	-2.37	
2,326.0	10.40	27.00	2,306.9	185.2	107.5	214.2	0.69	-0.21	-3.62	
2,420.0	10.10	31.90	2,399.4	199.8	115.7	230.9	0.98	-0.32	5.21	
2,513.0	11.00	29.00	2,490.8	214.5	124.4	247.9	1.12	0.97	-3.12	
2,607.0	11.40	28.00	2,583.0	230.5	133.1	266.2	0.47	0.43	-1.06	
2,701.0	11.20	25.30	2,675.2	247.0	141.3	284.5	0.60	-0.21	-2.87	
2,794.0	10.40	31.70	2,766.5	262.3	149.6	301.9	1.55	-0.86	6.88	
2,888.0	10.70	32.30	2,858.9	276.9	158.7	319.1	0.34	0.32	0.64	
2,982.0	11.10	29.90	2,951.2	292.1	167.9	336.9	0.64	0.43	-2.55	
3,075.0	11.30	31.70	3,042.5	307.6	177.1	355.0	0.43	0.22	1.94	
3,169.0	10.60	31.40	3,134.8	322.8	186.5	372.8	0.75	-0.74	-0.32	
3,263.0	10.40	27.40	3,227.2	337.7	194.9	389.9	0.80	-0.21	-4.26	
3,356.0	11.10	32.50	3,318.6	352.7	203.6	407.3	1.27	0.75	5.48	
3,450.0	12.10	31.20	3,410.6	368.8	213.5	426.2	1.10	1.06	-1.38	
3,544.0	12.70	33.30	3,502.4	385.9	224.3	446.3	0.80	0.64	2.23	
3,637.0	11.20	29.70	3,593.4	402.3	234.4	465.6	1.80	-1.61	-3.87	
3,731.0	12.40	33.60	3,685.4	418.6	244.5	484.8	1.53	1.28	4.15	
3,825.0	11.50	32.40	3,777.4	434.9	255.1	504.2	0.99	-0.96	-1.28	
3,918.0	11.30	32.60	3,868.6	450.4	265.0	522.6	0.22	-0.22	0.22	
4,012.0	12.20	37.10	3,960.6	466.1	275.9	541.6	1.37	0.96	4.79	
4,106.0	12.70	33.90	4,052.4	482.6	287.7	561.8	0.91	0.53	-3.40	
4,199.0	13.30	32.50	4,143.0	500.1	299.1	582.7	0.73	0.65	-1.51	
4,293.0	10.90	29.40	4,234.9	517.0	309.3	602.4	2.64	-2.55	-3.30	
4,387.0	9.10	31.10	4,327.5	531.1	317.5	618.7	1.94	-1.91	1.81	
4,480.0	7.60	23.30	4,419.5	543.0	323.8	632.1	2.02	-1.61	-8.39	
4,574.0	4.80	30.20	4,512.9	552.1	328.2	642.2	3.08	-2.98	7.34	
4,668.0	3.60	19.40	4,606.7	558.3	331.2	649.1	1.52	-1.28	-11.49	
4,761.0	1.30	1.80	4,699.6	562.1	332.2	652.9	2.57	-2.47	-18.92	
4,855.0	1.10	354.60	4,793.6	564.1	332.1	654.6	0.27	-0.21	-7.66	
4,949.0	0.30	13.10	4,887.6	565.2	332.1	655.5	0.87	-0.85	19.68	
5,042.0	0.20	253.80	4,980.6	565.4	332.0	655.6	0.47	-0.11	-128.28	
5,061.3	0.25	238.22	4,999.9	565.4	331.9	655.6	0.39	0.24	-80.60	
PERMIT TARGET BHL 2570'FSL & 50'FEL										
5,061.7	0.25	238.22	5,000.2	565.4	331.9	655.6	0.00	0.00	0.00	
DRILL TARGET BHL 2540'FSL & 100'FEL										
5,136.0	0.50	213.70	5,074.6	565.0	331.6	655.1	0.40	0.34	-32.99	
5,230.0	0.50	235.70	5,168.6	564.5	331.0	654.3	0.20	0.00	23.40	
5,323.0	0.70	197.10	5,261.6	563.7	330.5	653.4	0.47	0.22	-41.51	
5,417.0	1.20	165.20	5,355.5	562.2	330.6	652.2	0.76	0.53	-33.94	
5,511.0	1.20	161.30	5,449.5	560.3	331.2	650.8	0.09	0.00	-4.15	
5,604.0	1.10	141.30	5,542.5	558.7	332.0	649.8	0.44	-0.11	-21.51	
5,698.0	0.70	166.80	5,636.5	557.4	332.7	649.1	0.59	-0.43	27.13	
5,792.0	0.90	176.00	5,730.5	556.1	332.9	648.1	0.25	0.21	9.79	

Company:	EnCana Oil & Gas Weld County CO	Local Co-ordinate Reference:	Well Melbon Ranch 8-4-17
Project:	SEC.17-T2N-R65W	TVD Reference:	WELL @ 4914.0ft (Original Well Elev)
Site:	Melbon Ranch 8-4-17 Pad Sec.17-T2N-R65W	MD Reference:	WELL @ 4914.0ft (Original Well Elev)
Well:	Melbon Ranch 8-4-17	North Reference:	True
Wellbore:	Wellbore #1	Survey Calculation Method:	Minimum Curvature
Design:	Wellbore #1	Database:	Landmark

Survey									
Measured Depth (ft)	Inclination (°)	Azimuth (°)	Vertical Depth (ft)	+N/-S (ft)	+E/-W (ft)	Vertical Section (ft)	Dogleg Rate (°/100ft)	Build Rate (°/100ft)	Turn Rate (°/100ft)
5,885.0	0.50	169.00	5,823.5	555.0	333.0	647.1	0.44	-0.43	-7.53
5,979.0	0.70	94.10	5,917.5	554.5	333.7	647.1	0.79	0.21	-79.68
6,072.0	0.80	105.20	6,010.5	554.3	334.9	647.5	0.19	0.11	11.94
6,166.0	0.50	79.30	6,104.5	554.2	335.9	647.9	0.44	-0.32	-27.55
6,260.0	0.70	78.80	6,198.5	554.4	336.9	648.6	0.21	0.21	-0.53
6,353.0	0.60	54.30	6,291.4	554.8	337.8	649.4	0.31	-0.11	-26.34
6,447.0	0.30	96.60	6,385.4	555.1	338.5	649.9	0.46	-0.32	45.00
6,542.0	0.40	27.40	6,480.4	555.4	338.9	650.4	0.43	0.11	-72.84
6,636.0	0.70	56.50	6,574.4	556.0	339.5	651.2	0.43	0.32	30.96
6,730.0	0.50	42.90	6,668.4	556.6	340.3	652.1	0.26	-0.21	-14.47
6,824.0	1.00	69.50	6,762.4	557.2	341.3	653.2	0.63	0.53	28.30
6,919.0	1.20	49.10	6,857.4	558.1	342.9	654.7	0.46	0.21	-21.47
7,013.0	1.50	36.00	6,951.4	559.7	344.3	656.9	0.46	0.32	-13.94
7,029.6	1.50	34.42	6,967.9	560.1	344.6	657.3	0.25	-0.02	-9.55
TARGET CIRCLE 2540'FSL & 100'FEL									
7,107.0	1.50	27.00	7,045.4	561.8	345.6	659.3	0.25	0.00	-9.58
7,202.0	1.10	44.20	7,140.3	563.6	346.8	661.5	0.58	-0.42	18.11
7,296.0	1.10	35.30	7,234.3	565.0	348.0	663.2	0.18	0.00	-9.47
7,390.0	0.80	65.10	7,328.3	566.0	349.1	664.7	0.60	-0.32	31.70
7,485.0	0.60	116.90	7,423.3	566.0	350.1	665.2	0.67	-0.21	54.53
7,579.0	0.30	137.70	7,517.3	565.6	350.7	665.2	0.36	-0.32	22.13
7,673.0	0.10	233.50	7,611.3	565.4	350.8	665.0	0.35	-0.21	101.92
7,767.0	0.10	300.00	7,705.3	565.4	350.7	665.0	0.12	0.00	70.74
7,868.0	0.70	252.90	7,806.3	565.3	350.0	664.5	0.63	0.59	-46.63
7,899.8	0.70	252.90	7,838.1	565.2	349.6	664.2	0.00	0.00	0.00
HARDLINE 100'N & 100'E OF DRILL TARGET BHL									
7,913.0	0.70	252.90	7,851.3	565.1	349.5	664.1	0.00	0.00	0.00

Checked By: _____	Approved By: _____	Date: _____
-------------------	--------------------	-------------