

WELL LOCATION

T4S, R64W, 6th P.M.

ConocoPhillips Company

2.5" Alum. Cap, PLS #22285
Lat: 39.681473
Long: 104.584100

S88°32'32"E - 5290.82' (Meas.)

2.5" Alum. Cap,
0.3' Above Ground
Lat: 39.681119
Long: 104.585311

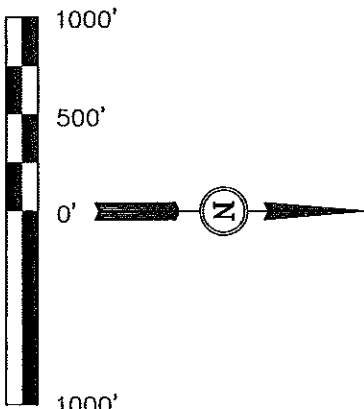
Well location, TEBO #29-1H, located as shown in the SE 1/4 SE 1/4 of Section 29, T4S, R64W, 6th P.M., Arapahoe County, Colorado.

BASIS OF ELEVATION

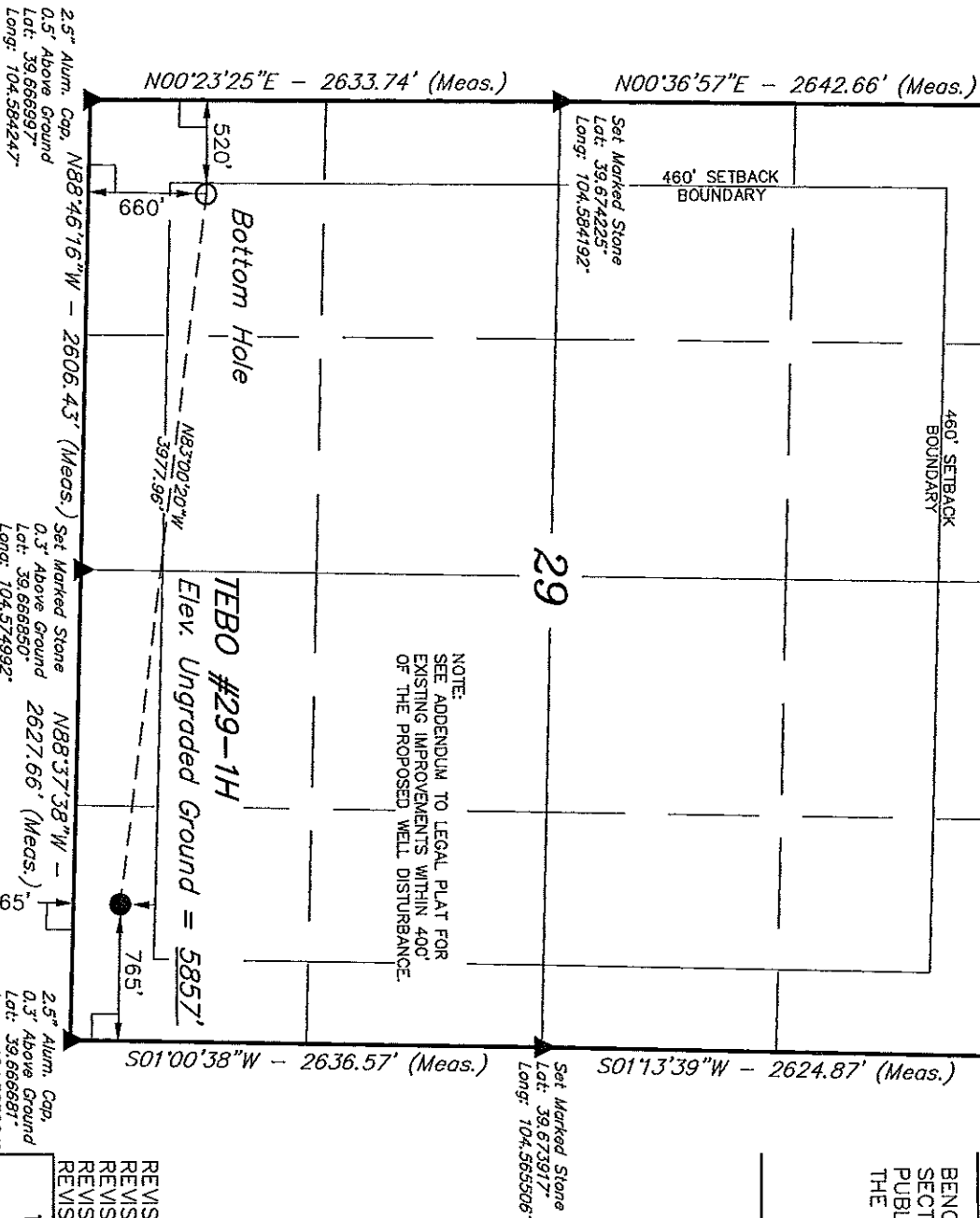
BENCHMARK 374 LOCATED ON THE SECTION LINE BETWEEN SECTIONS 12 & 13, T5S, R64W, 6th P.M., TAKEN FROM 1988 PUBLISHED DATUM BY THE UNITED STATES DEPARTMENT OF THE INTERIOR, GEOLOGICAL SURVEY AS BEING 6054.61 FEET.

BASIS OF BEARINGS

BASIS OF BEARINGS IS A G.P.S. OBSERVATION.



NOTE:
SEE ADDENDUM TO LEGAL PLAT FOR
EXISTING IMPROVEMENTS WITHIN 400'
OF THE PROPOSED WELL DISTURBANCE.



LEGEND:

- = 90° SYMBOL
- = PROPOSED WELL HEAD.
- ▲ = SECTION CORNERS LOCATED.

NAD 83 (TARGET BOTTOM HOLE)	NAD 83 (SURFACE LOCATION)
LATITUDE = 39°40'07.60" (39.666778)	LATITUDE = 39°40'02.85" (39.667458)
LONGITUDE = 104°34'56.59" (104.582386)	LONGITUDE = 104°34'06.11" (104.568364)
NAD 27 (TARGET BOTTOM HOLE)	NAD 27 (SURFACE LOCATION)
LATITUDE = 39°40'07.65" (39.666792)	LATITUDE = 39°40'02.90" (39.667472)
LONGITUDE = 104°34'54.71" (104.581864)	LONGITUDE = 104°34'04.23" (104.567842)
STATE PLANE NAD 83	STATE PLANE NAD 83
N: 1669785.62 E: 3258311.00	N: 1669345.20 E: 3262263.09
STATE PLANE NAD 27	STATE PLANE NAD 27
N: 669778.52 E: 2258464.72	N: 669338.18 E: 2262416.78

PP08 3.1

REVISD: 05-17-12 Z.L.
REVISD: 05-16-12 Z.L.
REVISD: 05-07-12 W.M.
REVISD: 03-27-12
REVISD: 02-23-12

THIS IS TO CERTIFY THAT THE ABOVE PLAT WAS PREPARED FROM FIELD NOTES OF ACTUAL SURVEYS MADE BY ME OR UNDER MY SUPERVISION AND THAT THE SAME ARE TRUE AND CORRECT TO THE BEST OF MY KNOWLEDGE AND BELIEF.

CERTIFICATE

REGISTERED LAND SURVEYOR
REGISTRATION NO. 17482
STATE OF COLORADO 05-17-12

UTAH ENGINEERING & LAND SURVEYING
85 SOUTH 200 EAST - VERNAL, UTAH 84078
(435) 789-1017

SCALE 1" = 1000'

PARTY L.S. K.H. J.J.

WEATHER COOL

DATE SURVEYED: 11-21-11 DATE DRAWN: 12-07-11

REFERENCES G.L.O. PLAT

FILE ConocoPhillips Company

SECTION BREAKDOWN T4S, R64W, 6th P.M.

ConocoPhillips Company

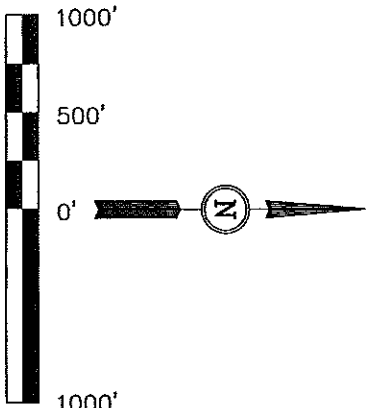
Well location, TEBO #29-1H, located as shown in the SE 1/4 SE 1/4 of Section 29, T4S, R64W, 6th P.M., Arapahoe County, Colorado.

BASIS OF ELEVATION

BENCHMARK 374 LOCATED ON THE SECTION LINE BETWEEN SECTIONS 12 & 13, T5S, R64W, 6th P.M., TAKEN FROM 1988 PUBLISHED DATUM BY THE UNITED STATES DEPARTMENT OF THE INTERIOR, GEOLOGICAL SURVEY AS BEING 6054.61 FEET.

BASIS OF BEARINGS

BASIS OF BEARINGS IS A G.P.S. OBSERVATION.



CERTIFICATE

THIS IS TO CERTIFY THAT THE ABOVE PLAT WAS PREPARED FROM FIELD NOTES OF ACTUAL SURVEYS MADE BY ME OR UNDER MY SUPERVISION AND THAT THE SAME ARE TRUE AND CORRECT TO THE BEST OF MY KNOWLEDGE AND BELIEF.

REVISED: 05-17-12 Z.L.
REVISED: 05-16-12 Z.L.
REVISED: 05-07-12 W.M.
REVISED: 03-27-12

REGISTERED LAND SURVEYOR
STATE OF UTAH
05-17-12

UNTAR ENGINEERING & LAND SURVEYING
85 SOUTH 200 EAST - VERNAL, UTAH 84078
(435) 789-1017

SCALE 1" = 1000'
DATE SURVEYED: 11-21-11 DATE DRAWN: 02-23-12

PARTY L.S. K.H. J.J. REFERENCES G.L.O. PLAT

WEATHER COOL FILE ConocoPhillips Company

LEGEND:

- = 90° SYMBOL
- = PROPOSED WELL HEAD.
- ▲ = SECTION CORNERS LOCATED.

NAD 83 (TARGET BOTTOM HOLE)		NAD 83 (SURFACE LOCATION)	
LATITUDE = 39°40'07.60" (39.668778)	LATITUDE = 39°40'07.60" (39.667455)	LATITUDE = 39°40'02.85" (39.667455)	LATITUDE = 39°40'02.85" (39.667455)
LONGITUDE = 104°34'56.59" (104.582386)	LONGITUDE = 104°34'56.59" (104.582386)	LONGITUDE = 104°34'06.11" (104.568364)	LONGITUDE = 104°34'06.11" (104.568364)
NAD 27 (TARGET BOTTOM HOLE)		NAD 27 (SURFACE LOCATION)	
LATITUDE = 39°40'07.65" (39.668792)	LATITUDE = 39°40'07.65" (39.668792)	LATITUDE = 39°40'02.90" (39.667472)	LATITUDE = 39°40'02.90" (39.667472)
LONGITUDE = 104°34'54.71" (104.581864)	LONGITUDE = 104°34'54.71" (104.581864)	LONGITUDE = 104°34'04.23" (104.567842)	LONGITUDE = 104°34'04.23" (104.567842)
STATE PLANE NAD 83		STATE PLANE NAD 83	
N: 1669785.62 E: 3258311.00	N: 1669785.62 E: 3258311.00	N: 1669345.20 E: 3262263.09	N: 1669345.20 E: 3262263.09
STATE PLANE NAD 27		STATE PLANE NAD 27	
N: 669778.52 E: 2258464.72	N: 669778.52 E: 2258464.72	N: 669338.18 E: 2262416.78	N: 669338.18 E: 2262416.78

PDOP 3.1

2.5" Alum. Cap.
0.5" Above Ground
Lat: 39.668997
Long: 104.584247

Set Marked Stone
0.3" Above Ground
Lat: 39.668850
Long: 104.574992

2.5" Alum. Cap.
0.3" Above Ground
Lat: 39.666881
Long: 104.565664

