

**HALLIBURTON**

**CONTINENTAL RESOURCES INC  
PO BOX 1032  
ENID, Oklahoma**

Planck  
Planck 1-14H

**CYCLONE/12**

## **Post Job Summary**

### **Cement Surface Casing**

Prepared for: Clark Morgan  
Date Prepared: 02/06/2012  
Version: 1

Service Supervisor: WHEELER, JUSTIN

Submitted by: PLIENESS, RYAN

**HALLIBURTON**

# HALLIBURTON

## Wellbore Geometry

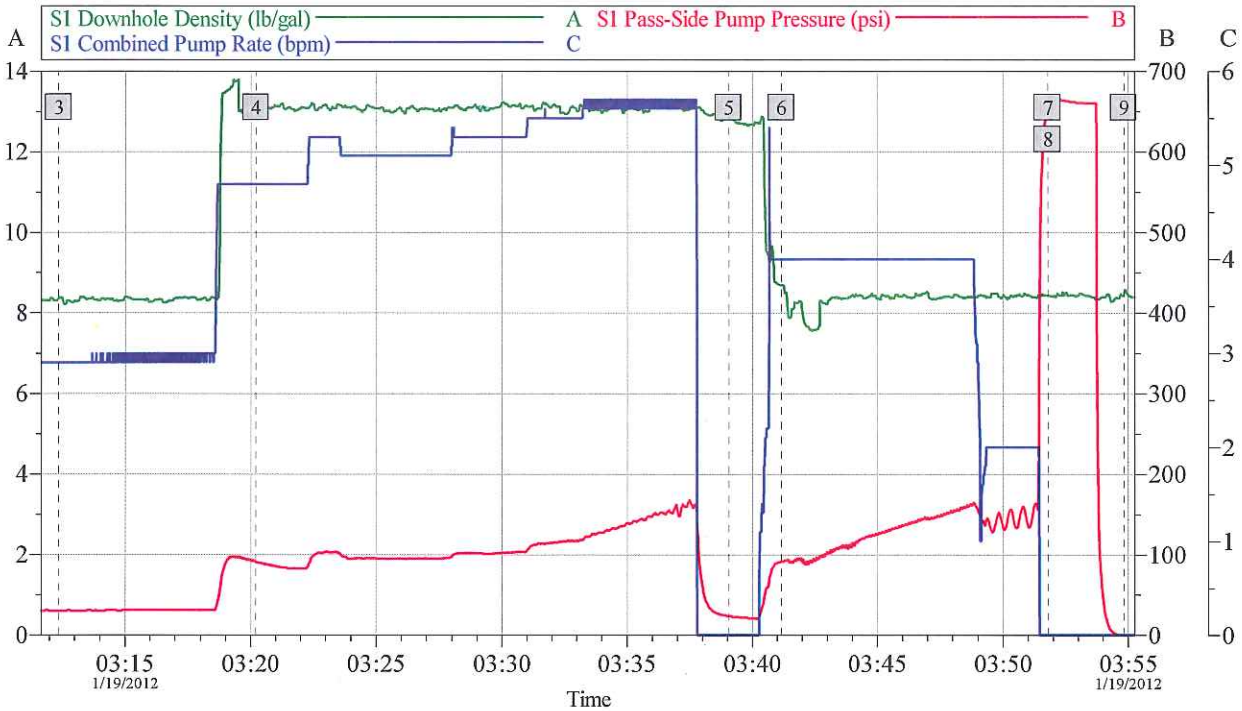
Job Tubulars					MD		TVD		Excess	Shoe Joint Length
Type	Description	Size in	ID in	Wt lbm/ft	Top ft	Bottom ft	Top ft	Bottom ft	%	ft
Casing	Surface Casing	9.63	8.921	36.00	0.00	541.00	0.00	0.00	0.00	71.00
Open Hole Section	Open Hole	-	13.500	-	0.00	530.00	0.00	0.00	75.00	-

## Pumping Schedule

Stage / Plug #	Fluid #	Fluid Type	Fluid Name	Surface Density lbm/gal	Avg Rate bbl/min	Surface Volume	Downhole Volume
1	1	Spacer	Water Spacer	8.34	2.00	40	40
1	2	Cement Slurry	Swiftcem B2 13.0#	13.00	5.00	93.3	93.3

# HALLIBURTON

## Data Acquisition



### Global Event Log

3 Start Job	03:12:22	4 Pump Cement	03:20:12	5 Drop Top Plug	03:39:03
6 Pump Displacement	03:41:10	7 Bump Plug	03:51:47	8 Check Floats, Floats Holding	03:51:47
9 End Job	03:54:50				

Customer:	Job Date: 19-Jan-2012	Sales Order #: 9212064
Well Description:	UWI:	

OptiCem v6.4.10  
06-Feb-12 12:18

# HALLIBURTON

## Service Supervisor Reports

### Job Log

Date/Time	Chart #	Activity Code	Pump Rate	Cum Vol	Pressure (psig)	Comments
01/19/2012 00:00		Depart from Service Center or Other Site				
01/19/2012 01:20		Arrive At Loc				
01/19/2012 01:30		Safety Meeting - Pre Rig-Up				Mixing Water Tested Ok For Mixing Cement
01/19/2012 03:03		Pump Spacer	2	40	15.0	Pump Fresh Water Spacer
01/19/2012 03:20		Pump Cement	5	93.3	90.0	Mix and Pump 270 sks SwiftCem Cement @ 13 lb/gal (Density Verified By Pressurized Mud Scales)
01/19/2012 03:39		Drop Top Plug				Shut-Down, Drop Top Plug
01/19/2012 03:41		Pump Displacement - Start	4	0	90.0	Pump Fresh Water Displacement, Wash-Up on Top of Plug
01/19/2012 03:43		Cement Returns to Surface	4	6	120.0	30 bbls Cement Returns to Surface
01/19/2012 03:51		Pump Displacement - End	2	36.3	135.0	Good Returns Throughout Job
01/19/2012 03:51		Bump Plug	2	36.3	655.0	Bump Plug 500 PSI Over Lift Pressure, @ 2 BPM
01/19/2012 03:54		Check Floats				Floats Holding
01/19/2012 03:55		Other				Monitor Cement Fallback
01/19/2012 05:00		Other				Cement Approx. 5' Above Ground Level After 1 Hr.
01/19/2012 05:00		Other				Tie-On to Conductor Casing, Pump 15 bbls Fresh Water to Clean Conductor, and Flowline
01/19/2012 05:20		Safety Meeting - Pre Rig-Down				
01/19/2012 06:00		Safety Meeting - Departing Location				

### The Road to Excellence Starts with Safety

Sold To #: 301520	Ship To #: 2902903	Quote #:	Sales Order #: 9212064
Customer: CONTINENTAL RESOURCES INC	Customer Rep: Huber, Chris		
Well Name: Planck	Well #: 1-14H	API/UWI #:	
Field: WATTENBERG	City (SAP): BRIGGS DALE	County/Parish: Weld	State: Colorado
Contractor: CYCLONE	Rig/Platform Name/Num: 12		
Job Purpose: Cement Surface Casing			
Well Type: Development Well	Job Type: Cement Surface Casing		
Sales Person: FLING, MATTHEW	Srv Supervisor: WHEELER, JUSTIN	MBU ID Emp #: 196470	

### Job Personnel

HES Emp Name	Exp Hrs	Emp #	HES Emp Name	Exp Hrs	Emp #	HES Emp Name	Exp Hrs	Emp #
BERTRAND, JAMES Robert	0.0	509791	KUNERT, RANDY Joe	0.0	477850	LYNCH, JACK William	0.0	483039
WHEELER, JUSTIN W	0.0	196470						

### Equipment

HES Unit #	Distance-1 way	HES Unit #	Distance-1 way	HES Unit #	Distance-1 way	HES Unit #	Distance-1 way
11542778	70 mile	11605599	70 mile	11764052	70 mile	11764739	70 mile



# HALLIBURTON

Job Hours									
Date	On Location Hours	Operating Hours	Date	On Location Hours	Operating Hours	Date	On Location Hours	Operating Hours	
TOTAL		Total is the sum of each column separately							

Job					Job Times			
Formation Name					Date	Time	Time Zone	
Formation Depth (MD)	Top		Bottom		Called Out	18 - Jan - 2012	00:00	MST
Form Type			BHST		On Location	19 - Jan - 2012	01:20	MST
Job depth MD	541. ft		Job Depth TVD	541. ft	Job Started	19 - Jan - 2012	03:00	MST
Water Depth			Wk Ht Above Floor		Job Completed	19 - Jan - 2012	03:54	MST
Perforation Depth (MD)	From		To		Departed Loc	19 - Jan - 2012	05:30	MST

Well Data											
Description	New / Used	Max pressure psig	Size in	ID in	Weight lbm/ft	Thread	Grade	Top MD ft	Bottom MD ft	Top TVD ft	Bottom TVD ft
Open Hole				13.5					530.		
Surface Casing	Used		9.625	8.921	36.		J-55		541.		

Tools and Accessories													
Type	Size	Qty	Make	Depth	Type	Size	Qty	Make	Depth	Type	Size	Qty	Make
Guide Shoe					Packer					Top Plug			
Float Shoe					Bridge Plug					Bottom Plug			
Float Collar					Retainer					SSR plug set			
Insert Float										Plug Container			
Stage Tool										Centralizers			

Miscellaneous Materials												
Gelling Agt		Conc		Surfactant		Conc		Acid Type		Qty	Conc	%
Treatment Fld		Conc		Inhibitor		Conc		Sand Type		Size	Qty	

Fluid Data									
Stage/Plug #: 1									
Fluid #	Stage Type	Fluid Name	Qty	Qty uom	Mixing Density lbm/gal	Yield ft <sup>3</sup> /sk	Mix Fluid Gal/sk	Rate bbl/min	Total Mix Fluid Gal/sk
1	Water Spacer			bbl	8.34	.0	.0	4.0	
2	Swiftcem B2 13.0#	SWIFTCM (TM) SYSTEM (452990)		sacks	13.	2.02	11.03	5.0	11.03
11.03 Gal		FRESH WATER							

Calculated Values		Pressures		Volumes			
Displacement		Shut In: Instant		Lost Returns		Cement Slurry	
Top Of Cement		5 Min		Cement Returns		Actual Displacement	
Frac Gradient		15 Min		Spacers		Load and Breakdown	

Rates									
Circulating		Mixing		Displacement		Avg. Job			
Cement Left In Pipe	Amount	71 ft	Reason	Shoe Joint					
Frac Ring # 1 @	ID		Frac ring # 2 @	ID		Frac Ring # 3 @	ID		Frac Ring # 4 @
The Information Stated Herein Is Correct					Customer Representative Signature				