

---

**WILLIAMS PRODUCTION RMT INC - EBUS**

---

**GM 422-27  
GRAND VALLEY  
Garfield County , Colorado**

**Cement Surface Casing**  
**16-Apr-2011**

**Post Job Report**

## The Road to Excellence Starts with Safety

<b>Sold To #:</b> 300721		<b>Ship To #:</b> 2840446		<b>Quote #:</b>		<b>Sales Order #:</b> 8091341	
<b>Customer:</b> WILLIAMS PRODUCTION RMT INC - EBUS				<b>Customer Rep:</b> OAKS, RICK			
<b>Well Name:</b> GM			<b>Well #:</b> 422-27		<b>API/UWI #:</b> 05-045-19738		
<b>Field:</b> GRAND VALLEY		<b>City (SAP):</b> PARACHUTE		<b>County/Parish:</b> Garfield		<b>State:</b> Colorado	
<b>Lat:</b> N 39.491 deg. OR N 39 deg. 29 min. 27.913 secs.				<b>Long:</b> W 108.095 deg. OR W -109 deg. 54 min. 17.388 secs.			
<b>Contractor:</b> H&P 278			<b>Rig/Platform Name/Num:</b> H&P 278				
<b>Job Purpose:</b> Cement Surface Casing							
<b>Well Type:</b> Development Well			<b>Job Type:</b> Cement Surface Casing				
<b>Sales Person:</b> KOHL, KYLE			<b>Srvc Supervisor:</b> DANIEL, EVERETT			<b>MBU ID Emp #:</b> 337325	

### Job Personnel

HES Emp Name	Exp Hrs	Emp #	HES Emp Name	Exp Hrs	Emp #	HES Emp Name	Exp Hrs	Emp #
BORSZICH, STEPHEN A	7	412388	CRUPPER, JOSHUA	7	488926	DANIEL, EVERETT Dean	7	337325
YUTZY, BRIAN Matthew	7	478510						

### Equipment

HES Unit #	Distance-1 way	HES Unit #	Distance-1 way	HES Unit #	Distance-1 way	HES Unit #	Distance-1 way
10296152C	60 mile	10829465	60 mile	10897797	60 mile	11021972	60 mile
11027039	60 mile						

### Job Hours

Date	On Location Hours	Operating Hours	Date	On Location Hours	Operating Hours	Date	On Location Hours	Operating Hours
4/15/11	1.5	.5	4/16/11	5.5	2			
<b>TOTAL</b>	<b>7</b>	<b>2.5</b>	<i>Total is the sum of each column separately</i>					

### Job

Formation Name	Top	Bottom	Called Out	Date	Time	Time Zone
Formation Depth (MD)			On Location	15 - Apr - 2011	20:00	MST
Form Type	BHST		Job Started	15 - Apr - 2011	22:30	MST
Job depth MD	1150. m	Job Depth TVD	1150. m	16 - Apr - 2011	03:35	MST
Water Depth		Wk Ht Above Floor	4. m	16 - Apr - 2011	04:20	MST
Perforation Depth (MD)	From	To	Departed Loc	16 - Apr - 2011	05:30	MST

### Well Data

Description	New / Used	Max pressure MPa	Size mm	ID mm	Weight kg/m	Thread	Grade	Top MD m	Bottom MD m	Top TVD m	Bottom TVD m
-------------	------------	------------------	---------	-------	-------------	--------	-------	----------	-------------	-----------	--------------

### Sales/Rental/3<sup>rd</sup> Party (HES)

Description	Qty	Qty uom	Depth	Supplier
PLUG,CMTG,TOP,9 5/8,HWE,8.16 MIN/9.06 MA	1	EA		

### Tools and Accessories

Type	Size	Qty	Make	Depth	Type	Size	Qty	Make	Depth	Type	Size	Qty	Make
Guide Shoe					Packer					Top Plug	9.625	1	
Float Shoe					Bridge Plug					Bottom Plug			
Float Collar					Retainer					SSR plug set			
Insert Float										Plug Container	9.625	1	
Stage Tool										Centralizers			

### Miscellaneous Materials

Gelling Agt	Conc	Surfactant	Conc	Acid Type	Qty	Conc	%
Treatment Fld	Conc	Inhibitor	Conc	Sand Type	Size		Qty

Fluid Data									
Stage/Plug #: 1									
Fluid #	Stage Type	Fluid Name	Qty	Qty uom	Mixing Density kg/m3	Yield m3/sk	Mix Fluid m3/tonne	Rate m3/min	Total Mix Fluid m3/tonne
1	Water Spacer		20	bbl	8.4	.0	.0	.0	
2	Lead Cement	VERSACEM (TM) SYSTEM (452010)	160	sacks	12.3	2.38	13.75		13.75
3	Tail Cement	VERSACEM (TM) SYSTEM (452010)	160	sacks	12.8	2.11	11.75		11.75
4	Displacement Fluid		91.7	bbl	8.4	.0	.0	.0	
Calculated Values		Pressures		Volumes					
Displacement	91.7	Shut In: Instant		Lost Returns		Cement Slurry	127.9	Pad	
Top Of Cement	Surface	5 Min		Cement Returns	18	Actual Displacement	91.7	Treatment	
Frac Gradient		15 Min		Spacers	20	Load and Breakdown		Total Job	
Rates									
Circulating	6	Mixing	7	Displacement	9.5	Avg. Job	8		
Cement Left In Pipe	Amount	42.21 ft	Reason	Shoe Joint					
Frac Ring # 1 @	ID	Frac ring # 2 @	ID	Frac Ring # 3 @	ID	Frac Ring # 4 @	ID		
The Information Stated Herein Is Correct				Customer Representative Signature					

*The Road to Excellence Starts with Safety*

<b>Sold To #:</b> 300721	<b>Ship To #:</b> 2840446	<b>Quote #:</b>	<b>Sales Order #:</b> 8091341
<b>Customer:</b> WILLIAMS PRODUCTION RMT INC - EBUS		<b>Customer Rep:</b> OAKS, RICK	
<b>Well Name:</b> GM		<b>Well #:</b> 422-27	<b>API/UWI #:</b> 05-045-19738
<b>Field:</b> GRAND VALLEY	<b>City (SAP):</b> PARACHUTE	<b>County/Parish:</b> Garfield	<b>State:</b> Colorado
<b>Legal Description:</b>			
<b>Lat:</b> N 39.491 deg. OR N 39 deg. 29 min. 27.913 secs.		<b>Long:</b> W 108.095 deg. OR W -109 deg. 54 min. 17.388 secs.	
<b>Contractor:</b> H&P 278		<b>Rig/Platform Name/Num:</b> H&P 278	
<b>Job Purpose:</b> Cement Surface Casing			<b>Ticket Amount:</b>
<b>Well Type:</b> Development Well		<b>Job Type:</b> Cement Surface Casing	
<b>Sales Person:</b> KOHL, KYLE		<b>Srvc Supervisor:</b> DANIEL, EVERETT	<b>MBU ID Emp #:</b> 337325

Activity Description	Date/Time	Cht #	Rate m3/min	Volume m3		Pressure MPa		Comments
				Stage	Total	Tubing	Casing	
Call Out	04/15/2011 20:00							
Depart Yard Safety Meeting	04/15/2011 21:00							
Depart from Service Center or Other Site	04/15/2011 21:15							Checked out HES pump (Elite 9), 660
Arrive at Location from Service Center	04/15/2011 22:30							Arrived .5 hr. early. Did not start charging time until 2300
Assessment Of Location Safety Meeting	04/15/2011 22:35							
Consult with Co. Rep.	04/15/2011 22:40							Verified calculations and materials on location including H2O and Cement totals
Safety Meeting - Pre Rig-Up	04/15/2011 22:45							Discussed job procedures and safety issues
Rig-Up Equipment	04/15/2011 23:00							
Rig-Up Completed	04/15/2011 23:30							
Safety Meeting - Pre Job	04/16/2011 03:15							Discussed job procedures and safety issues
Start Job	04/16/2011 03:35							
Prime Pumps	04/16/2011 03:35		2	2			82.0	Fresh Water
Test Lines	04/16/2011 03:37		0.5	0.1			3215.0	Fresh Water
Pump Spacer 1	04/16/2011 03:41		6	20			238.0	Fresh Water
Pump Lead Cement	04/16/2011 03:47		7	67.8			465.0	160 sks of VersaCem @ 12.3# - 2.38 yield - 13.75 H2O requirement

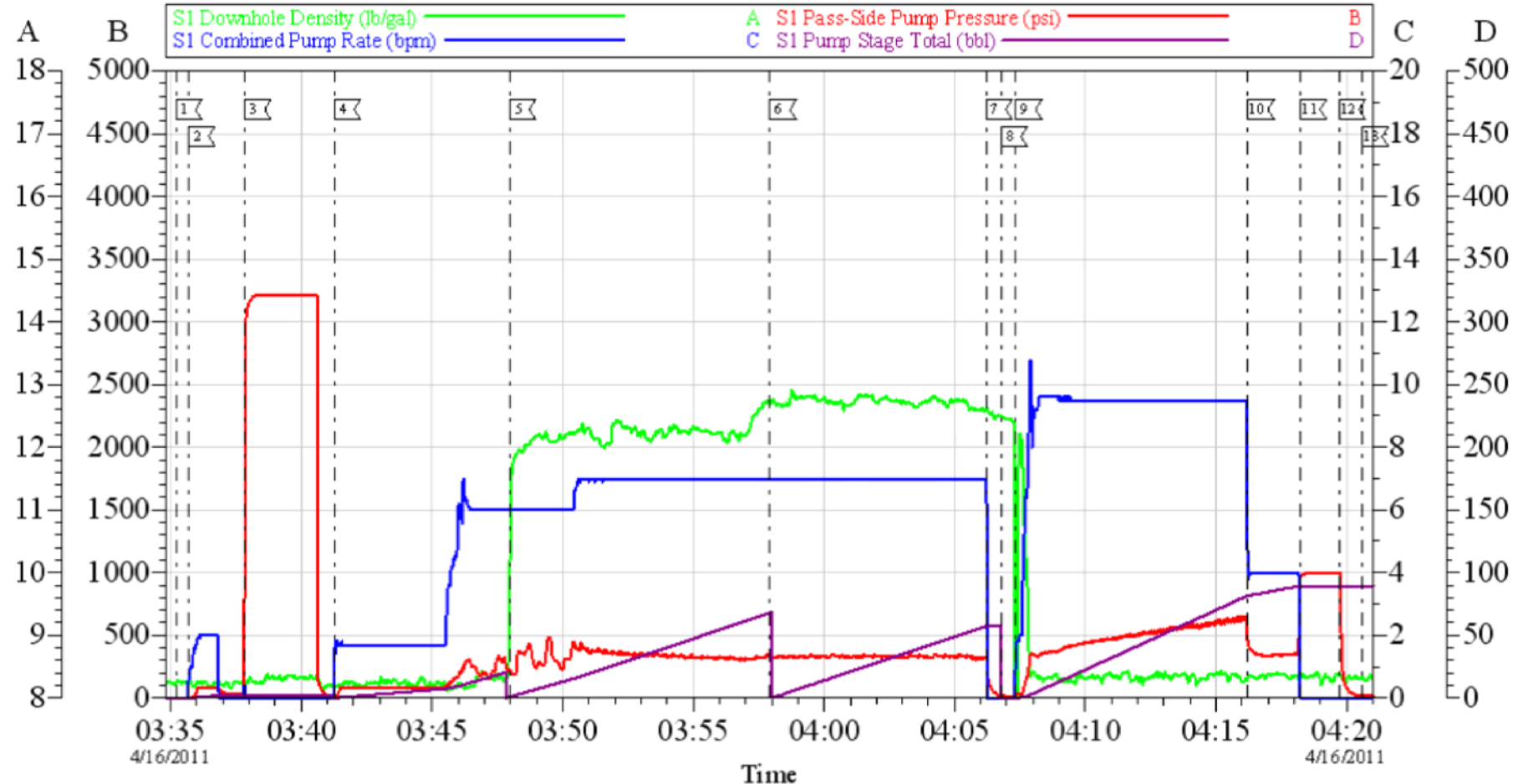
Activity Description	Date/Time	Cht #	Rate m3/min	Volume m3		Pressure MPa		Comments
				Stage	Total	Tubing	Casing	
Pump Tail Cement	04/16/2011 03:57		7	60.1			333.0	160 sks of VersaCem @ 12.8# - 2.11 yield - 11.75 H2O requirement
Shutdown	04/16/2011 04:06							
Drop Top Plug	04/16/2011 04:06							
Pump Displacement	04/16/2011 04:07		9.5	91.7			602.0	Fresh Water Displacement
Slow Rate	04/16/2011 04:16		2	81			480.0	Slowed to 2 bpm
Bump Plug	04/16/2011 04:18		2	91.7			992.0	Bumped Plug @ calculated displacement and 500 psi over
Check Floats	04/16/2011 04:19							Floats Held
End Job	04/16/2011 04:20							
Safety Meeting - Pre Rig-Down	04/16/2011 04:25							Discussed job procedures and safety issues
Rig-Down Equipment	04/16/2011 04:30							
Rig-Down Completed	04/16/2011 05:00							
Safety Meeting - Departing Location	04/16/2011 05:15							
Depart Location for Service Center or Other Site	04/16/2011 05:30							

Total Depth = 1225, Total Casing = 1207.73, Shoe Joint = 42.21, Mud Weight = 9.9# . Casing remained stationary throughout job and was chained down. 18 bbls of cement returned to surface. 209 bbls of H2O were used for the job and 20 bbls were used for clean up (after the job) The plug landed at calculated displacement and the floats held.

Thank you for using Grand Junction Halliburton Dean Daniel & Crew

# WILLIAMS

## Surface



Local Event Log			
1	Start Job	03:35:12	2
2	Prime Lines	03:35:42	3
3	Test Lines	03:37:50	4
4	Pump H2O Spacer	03:41:16	5
5	Pump Lead Cement	03:47:58	6
6	Pump Tail Cement	03:57:56	7
7	Shut Down	04:06:12	8
8	Drop Top Plug	04:06:47	9
9	Pump H2O Displacement	04:07:21	10
10	Slow Rate	04:16:14	11
11	Bump Plug	04:18:14	12
12	Check Floats	04:19:43	13
13	End Job	04:20:36	

Customer: Williams  
Well Description: GM-422-27  
Company Rep: Rick Oaks

Job Date: 15-Apr-2011  
Job Type: Surface  
Cement Supervisor: Dean Daniel

Sales Order #: 8091341  
ADC Used: Yes  
Elite #/Operator: 9/Stephen B orszich

OptiCem v6.4.4  
16-Apr-11 04:25