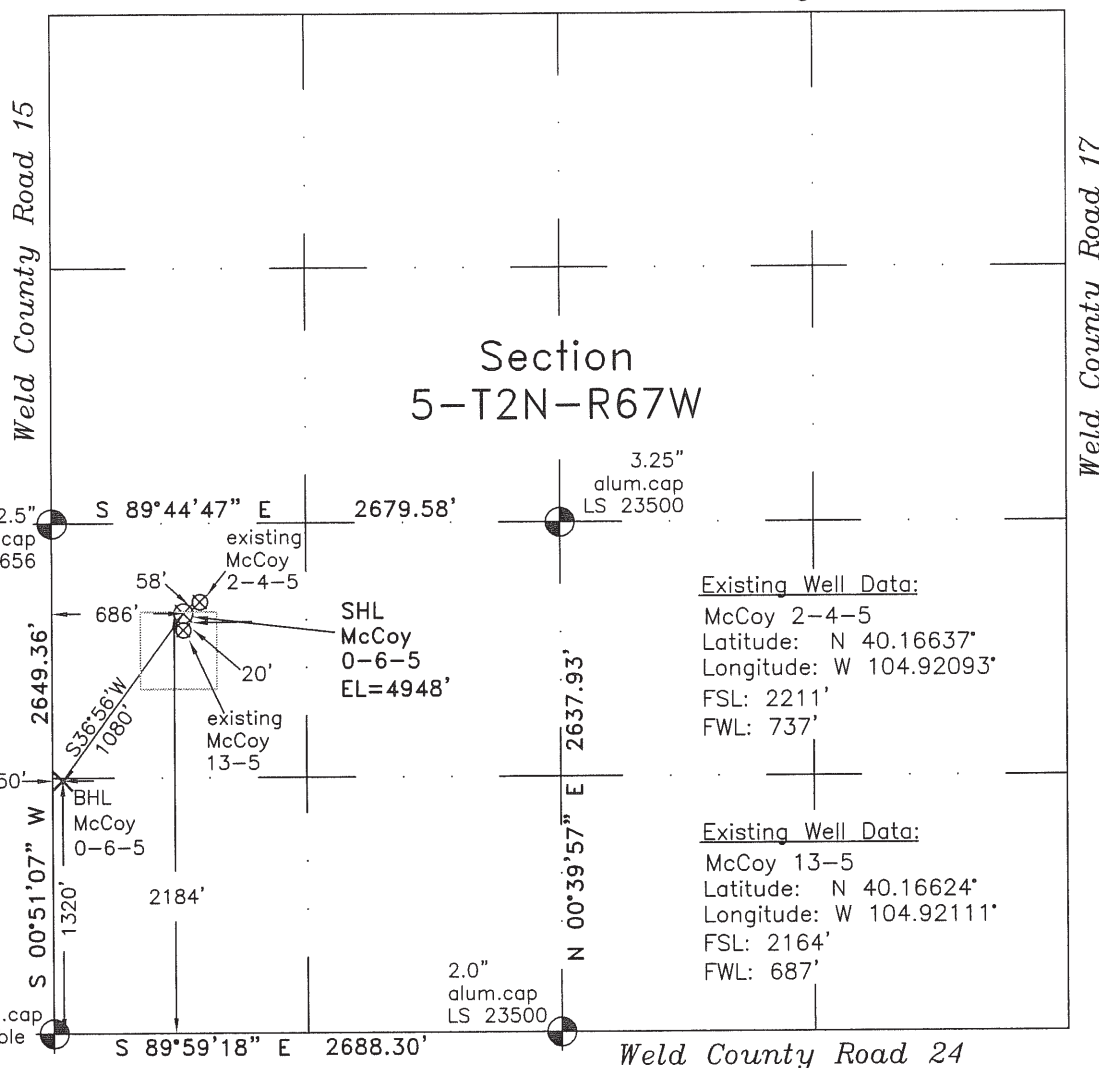


## WELL LOCATION CERTIFICATE

THIS MAP DOES NOT REPRESENT A BOUNDARY SURVEY

Weld County Road 26



Scale 1" = 1000'

1000'

approximate scale

LEGEND

— found survey monument

(c) — calculated dimension

In accordance with a request from Doug Pearlman of EnCana Oil & Gas (USA) Inc., Frederick Land Surveying, Inc. has determined the location of the **McCoy 0-6-5** well site to be SHL: 2184' FSL & 686' FWL, (BHL: 1320' FSL & 50' FWL) as measured at ninety (90) degrees from the section lines of Section 5, Township 2 North, Range 67 West of the 6th Principal Meridian, Town of Firestone, Weld County, Colorado.

Proposed Surface Hole Data:

Latitude: N 40.16630° (BHL 40.16394°)

Longitude: W 104.92111° (BHL 104.92345°)

Nearest: Building 815' west Above Ground Utility 659' west

Public Road 680' west Railroad 2000' west

Property Line: 462' north

PDOP: 2.5

Notes:

- 1) Bearings and distances based on NAD 83 Colorado North State Plane Coordinates using RTK GPS observations taken 3/23/010 by operator Tom Winans.
- 2) Conversion factor to ground (1.000271870).
- 3) Elevations based on NAVD 88 GPS heights and Geoid 2003 corrections.
- 4) See improvement map for visible improvements within 400 feet of pad site.
- 5) The location falls on agricultural land.

**NOTICE:** According to Colorado law you MUST commence any legal action based upon any defect in this W.L.C. within three years after you first discover such defect. In no event may any action based upon any defect in this W.L.C. be commenced more than ten years from this said date of the certification shown hereon.

I hereby certify that this Well Location Certificate was prepared by me or under my direct supervision on 3/25/10 for and on behalf of EnCana Oil & Gas (USA) and that it is a true and correct copy of the original survey plat and that it is not to be relied upon for establishment of fences, buildings, or other future improvement lines.

Alex Rondal, Registered Professional Land Surveyor, No. 34176

Job #: 06047.004