

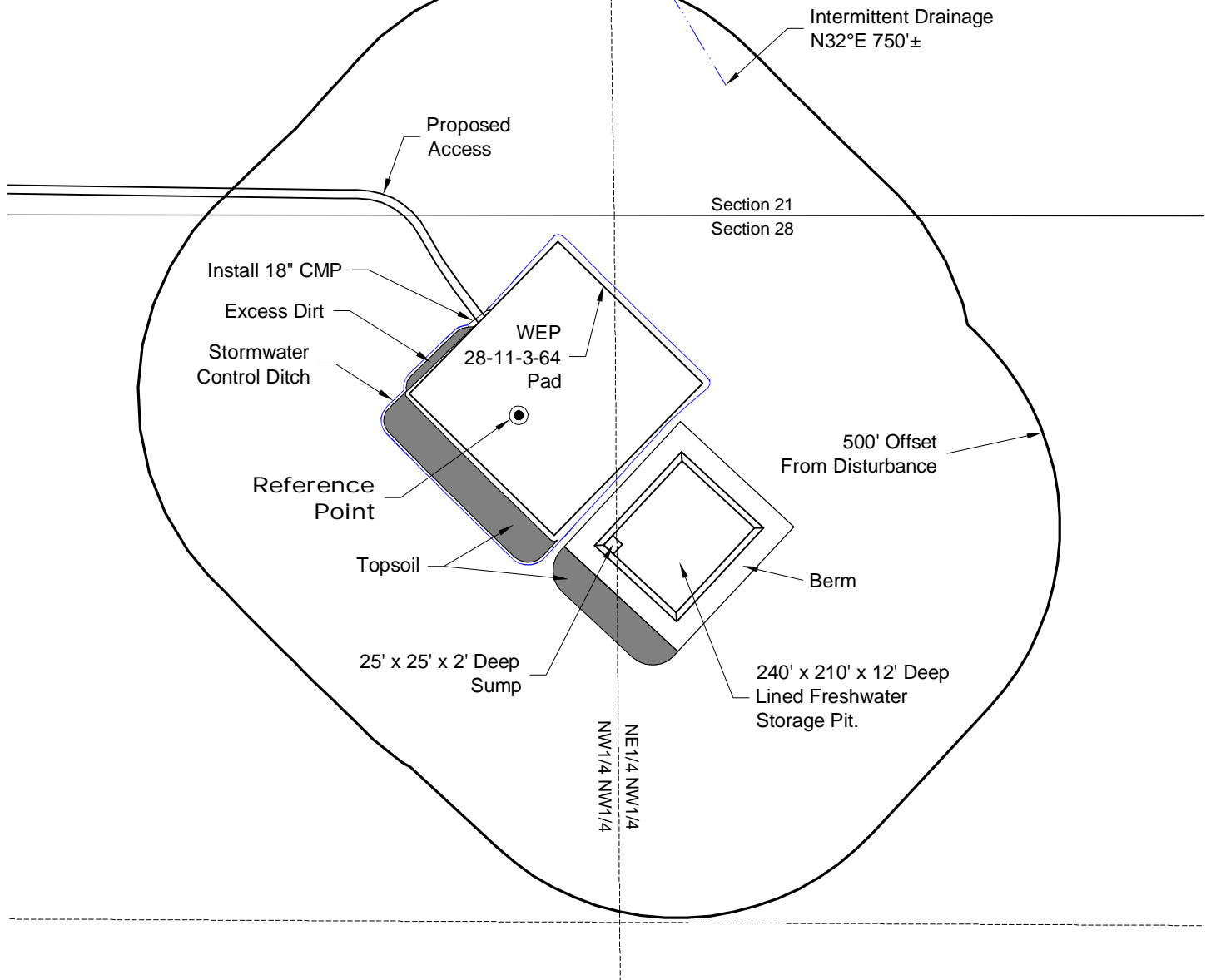
LOCATION DRAWING

VEGETATION:
WINTER WHEAT

SURFACE USE:
AGRICULTURAL

REFERENCE POINT

LATITUDE: 39.76715
LONGITUDE: -104.56047
FOOTAGE: 375 FNL 1134 FWL
GROUND ELEVATION: 5579.8
PDOP: 1.6 DATE: 5/11/2012
INSTRUMENT OPERATOR: MARC WOODARD

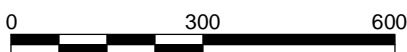


NOTE:
ALL PRODUCTION FACILITIES WILL BE ON PAD.

5/17/12



North



Graphic Scale in Feet
1" = 300'



LAND SURVEYING AND MAPPING
LAFAYETTE - WINTER PARK
Ph 303 666 0379 Fx 303 665 6320

CARRIZO OIL & GAS, INC
WEP 28-11-3-64 PAD

NW1/4 NW1/4 SECTION 28 T3S R64W
6th PM ADAMS COUNTY COLORADO