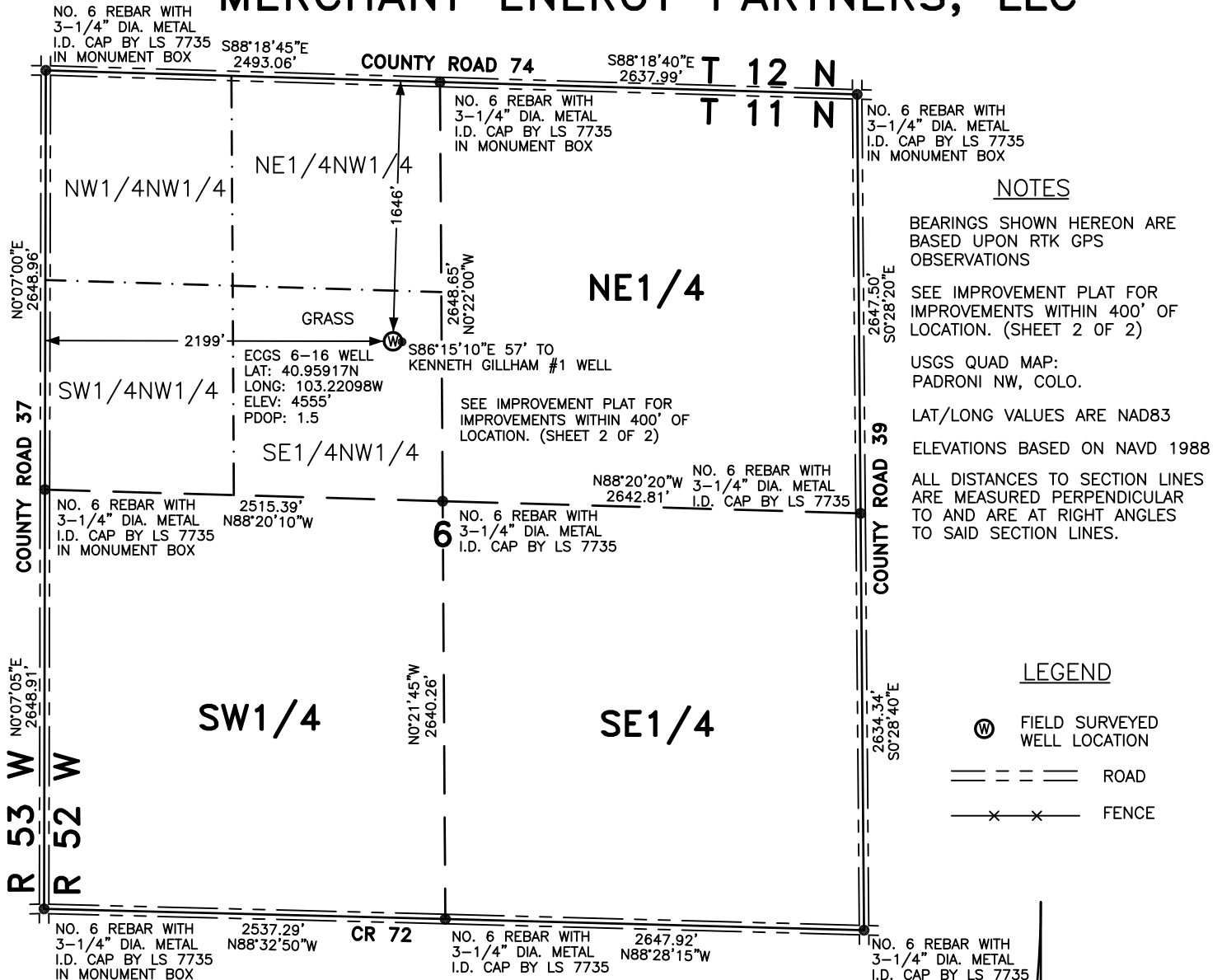


WELL LOCATION FOR MERCHANT ENERGY PARTNERS, LLC



NOTES

BEARINGS SHOWN HEREON ARE BASED UPON RTK GPS OBSERVATIONS

SEE IMPROVEMENT PLAT FOR IMPROVEMENTS WITHIN 400' OF LOCATION. (SHEET 2 OF 2)

USGS QUAD MAP: PADRONI NW, COLO.

LAT/LONG VALUES ARE NAD83

ELEVATIONS BASED ON NAVD 1988

ALL DISTANCES TO SECTION LINES ARE MEASURED PERPENDICULAR TO AND ARE AT RIGHT ANGLES TO SAID SECTION LINES.

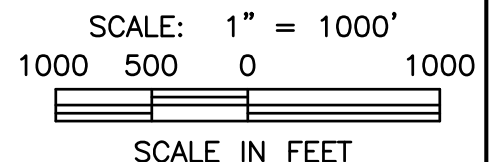
LEGEND

⊙ FIELD SURVEYED WELL LOCATION

== == == ROAD

- x - x - FENCE

THIS WELL LOCATION PLAT HAS BEEN PREPARED FOR MERCHANT ENERGY PARTNERS, LLC, TO LOCATE THE ECGS 6-16 WELL BEING 2199 FEET FROM THE WEST LINE AND 1646 FEET FROM THE NORTH LINE IN THE SE1/4NW1/4 OF SECTION 6, TOWNSHIP 11 NORTH, RANGE 52 WEST OF THE 6TH P.M., LOGAN COUNTY, COLORADO. THE SURFACE ELEVATION AT THIS POINT IS 4555 FEET. THIS IS NOT A LAND SURVEY PLAT.



LEIBERT-McATEE & ASSOCIATES, INC.

P.O. BOX 442 615 SOUTH TENTH AVENUE
STERLING, CO 80751 970-522-1960

FIELD DATE: 3-28-12	DWG DATE: 4-20-12	GPS OPERATOR: DARREN VEAL
ECGS 6-16	DWG NO. 373-12	SHEET 1 OF 2