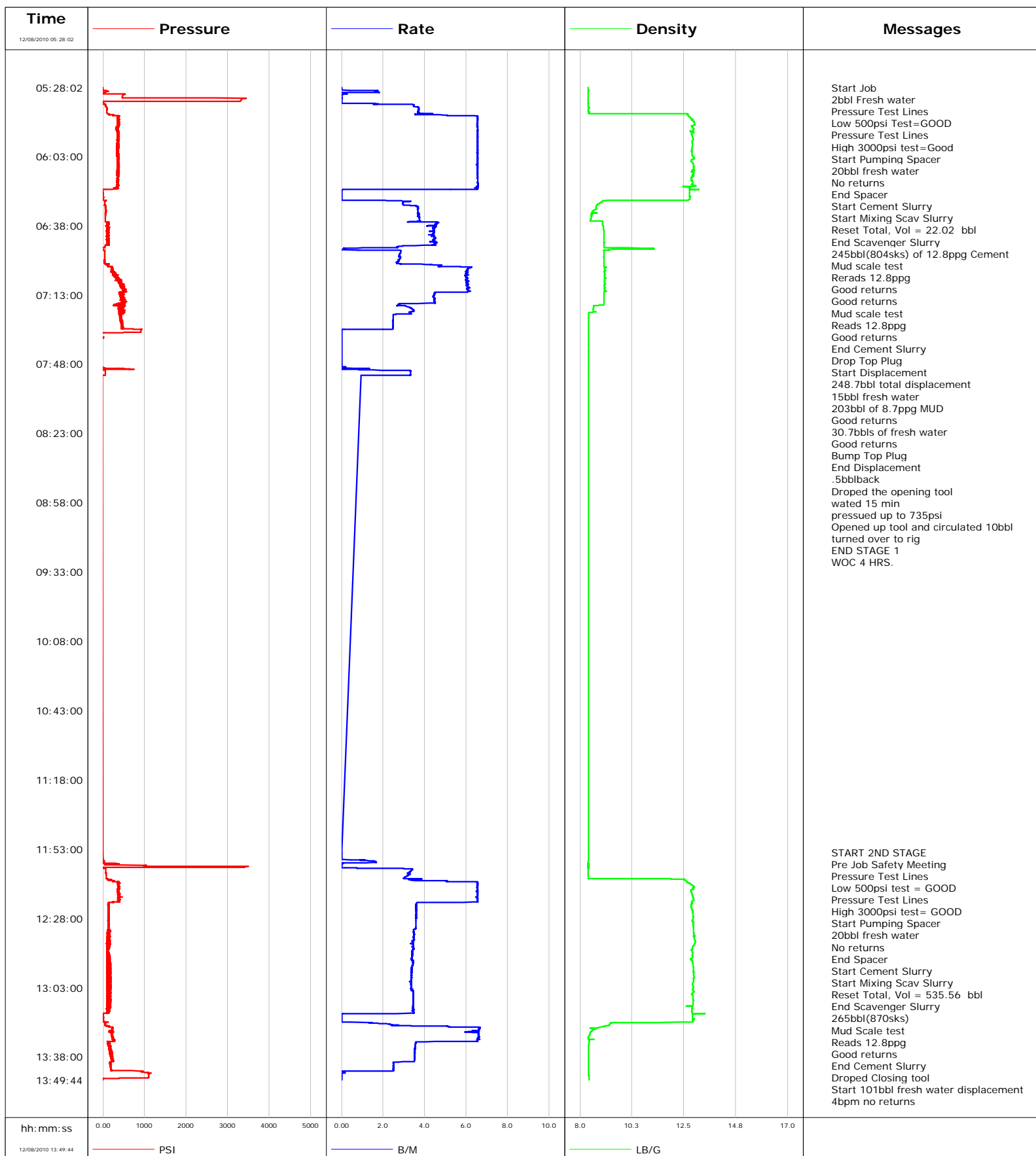


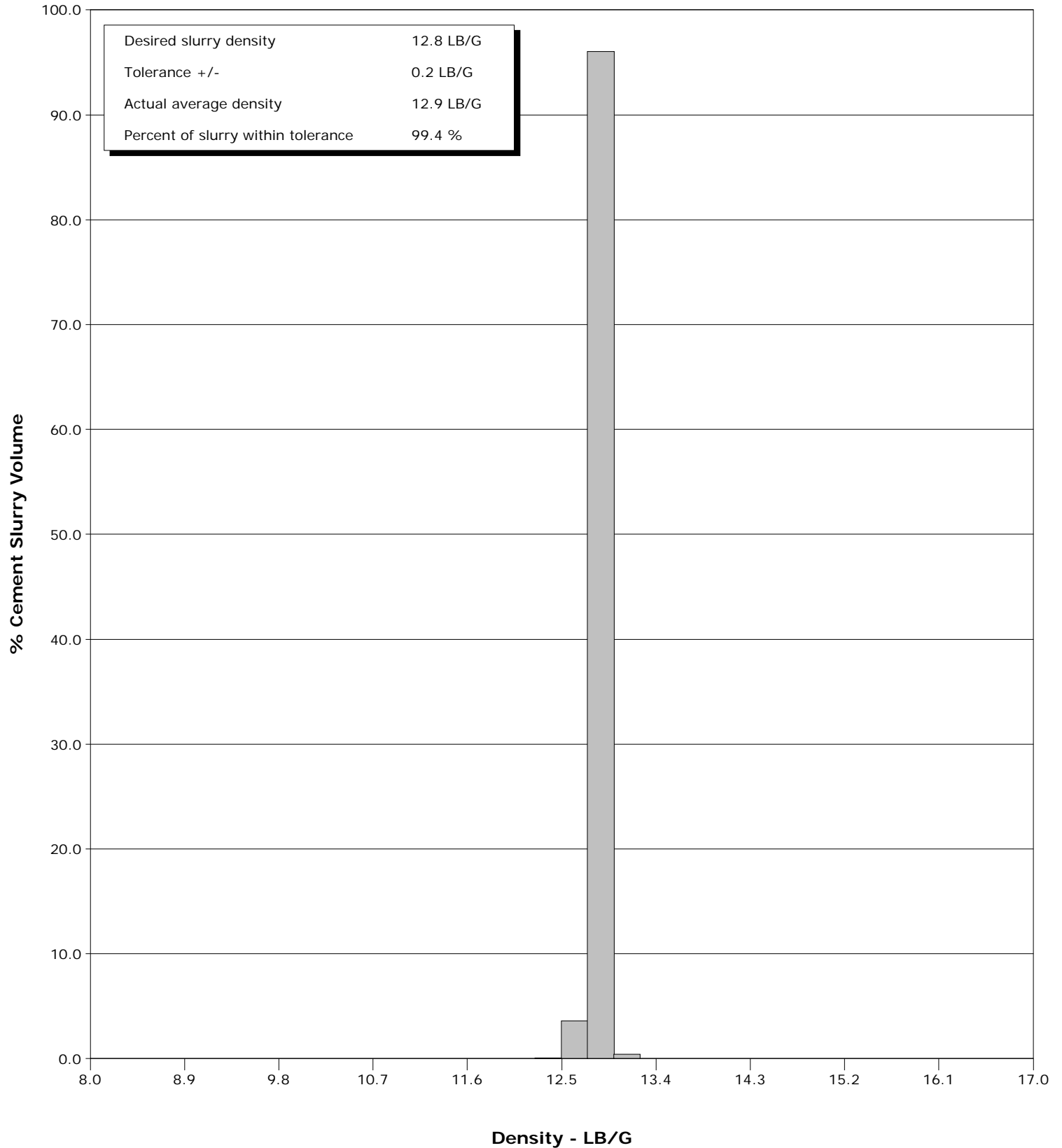
Well	RGU 22-14-198	Client	Williams
Field	Ryan Gulch	SIR No.	000457783
Engineer	Dustin C Krueger	Job Type	3252ft 9 5/8 2 Stage Surface
Country	United States	Job Date	12-08-2010



Well RGU 22-14-198
Field Ryan Gulch
Engineer Dustin C Krueger
Country United States

Client Williams
SIR No. 000457783
Job Type 3252ft 9 5/8 2 Stage Surface
Job Date 12-08-2010

Cement Slurry - 12/08/2010 05:41:51 to 12/08/2010 06:19:36



Page 1 of 6

Well RGU 22-14-198 RGU 22-14-198			Field Ryan Gulch		Job Start Dec/08/2010		Customer Williams		Job Number 000457783	
Date	Time 24-hr clock	Treating Pressure PSI	Flow Rate B/M	Density LB/G	Volume BBL	Message				
12/08/2010	05:32:10	472	0.0	8.36	1.9					
12/08/2010	05:34:40	3319	0.0	8.36	1.9					
12/08/2010	05:37:10	61	3.5	8.36	4.4					
12/08/2010	05:39:40	93	3.7	8.36	13.6					
12/08/2010	05:41:49					End Spacer				
12/08/2010	05:41:49	174	3.5	12.65	21.6					
12/08/2010	05:41:51					Start Cement Slurry				
12/08/2010	05:41:51	144	3.5	12.65	21.7					
12/08/2010	05:41:53					Start Mixing Scav Slurry				
12/08/2010	05:41:53	172	3.5	12.66	21.8					
12/08/2010	05:41:56					Reset Total, Vol = 22.02 bbl				
12/08/2010	05:41:56	139	3.6	12.67	22.0					
12/08/2010	05:42:10	257	5.1	12.68	23.1					
12/08/2010	05:44:40	370	6.5	12.84	39.1					
12/08/2010	05:47:10	371	6.5	12.96	55.4					
12/08/2010	05:49:40	338	6.5	12.91	71.8					
12/08/2010	05:52:10	343	6.5	12.86	88.1					
12/08/2010	05:54:40	332	6.5	12.91	104.5					
12/08/2010	05:57:10	353	6.5	12.88	120.8					
12/08/2010	05:59:40	358	6.5	12.86	137.2					
12/08/2010	06:02:10	329	6.5	12.85	153.6					
12/08/2010	06:04:40	371	6.5	12.84	169.9					
12/08/2010	06:07:10	382	6.5	12.93	186.3					
12/08/2010	06:08:57					End Scavenger Slurry				
12/08/2010	06:08:57	366	6.5	12.93	198.0					
12/08/2010	06:09:07					245bbl(804sks) of 12.8ppg Cement				
12/08/2010	06:09:07					Mud scale test				
12/08/2010	06:09:07	343	6.5	12.93	199.1					
12/08/2010	06:09:08					Rerads 12.8ppg				
12/08/2010	06:09:08					Good returns				
12/08/2010	06:09:08	343	6.5	12.93	199.2					
12/08/2010	06:09:40	356	6.6	12.91	202.7					
12/08/2010	06:10:36					Good returns				
12/08/2010	06:10:36	356	6.5	12.86	208.8					
12/08/2010	06:12:10	341	6.5	12.88	219.0					
12/08/2010	06:14:40	338	6.6	12.85	235.4					
12/08/2010	06:16:09					Mud scale test				
12/08/2010	06:16:09					Reads 12.8ppg				
12/08/2010	06:16:09	353	6.5	12.89	245.2					
12/08/2010	06:17:10	353	6.6	12.84	251.8					
12/08/2010	06:18:45					Good returns				
12/08/2010	06:18:45	342	6.5	12.77	262.2					
12/08/2010	06:19:36					End Cement Slurry				
12/08/2010	06:19:36	18	3.8	12.95	267.7					
12/08/2010	06:19:40	-4	0.8	13.15	267.8					
12/08/2010	06:19:42					Drop Top Plug				
12/08/2010	06:19:42	-4	0.3	13.15	267.9					
12/08/2010	06:19:43					Start Displacement				
12/08/2010	06:19:43	-5	0.3	13.15	267.9					
12/08/2010	06:19:47					248.7bbl total displacement				
12/08/2010	06:19:47					15bbl fresh water				
12/08/2010	06:19:47	-5	0.0	13.11	267.9					
12/08/2010	06:22:10	1	0.0	12.75	267.9					
12/08/2010	06:24:40	-0	0.0	12.76	267.9					

Well RGU 22-14-198 RGU 22-14-198			Field Ryan Gulch		Job Start Dec/08/2010		Customer Williams		Job Number 000457783	
Date	Time 24-hr clock	Treating Pressure PSI	Flow Rate B/M	Density LB/G	Volume BBL	Message				
12/08/2010	06:29:40	66	3.7	8.68	282.4					
12/08/2010	06:32:10	58	3.7	8.50	291.6					
12/08/2010	06:33:41					203bbl of 8.7ppg MUD				
12/08/2010	06:33:41	56	3.7	8.49	297.2					
12/08/2010	06:34:40	57	3.7	8.47	300.9					
12/08/2010	06:35:48					Good returns				
12/08/2010	06:35:48	54	3.6	8.98	305.1					
12/08/2010	06:37:10	96	4.6	8.98	310.9					
12/08/2010	06:39:40	101	4.5	9.02	322.1					
12/08/2010	06:42:10	92	4.4	9.03	333.1					
12/08/2010	06:44:40	128	4.5	9.04	344.3					
12/08/2010	06:47:10	105	4.5	9.04	355.5					
12/08/2010	06:49:40	-21	0.1	11.19	362.8					
12/08/2010	06:52:10	40	2.8	9.03	368.1					
12/08/2010	06:54:40	38	2.8	9.03	375.1					
12/08/2010	06:57:10	37	2.7	9.04	381.9					
12/08/2010	06:59:40	216	6.1	9.06	394.3					
12/08/2010	07:02:10	301	6.0	9.06	409.4					
12/08/2010	07:04:40	364	6.0	9.06	424.4					
12/08/2010	07:07:10	375	6.1	9.07	439.5					
12/08/2010	07:09:40	508	6.1	9.05	454.7					
12/08/2010	07:12:10	462	4.5	9.04	469.0					
12/08/2010	07:14:40	435	4.4	9.04	480.1					
12/08/2010	07:17:10	517	4.5	9.04	491.3					
12/08/2010	07:17:27					30.7bbls of fresh water				
12/08/2010	07:17:27	403	2.8	9.04	492.3					
12/08/2010	07:17:33					Good returns				
12/08/2010	07:17:33	421	2.8	9.04	492.6					
12/08/2010	07:19:40	420	3.4	8.58	499.0					
12/08/2010	07:22:10	416	3.3	8.38	507.4					
12/08/2010	07:24:40	447	2.5	8.37	514.2					
12/08/2010	07:27:10	426	2.5	8.38	520.4					
12/08/2010	07:29:40	462	2.5	8.38	526.6					
12/08/2010	07:30:58					Bump Top Plug				
12/08/2010	07:30:58					End Displacement				
12/08/2010	07:30:58	910	0.0	8.38	528.4					
12/08/2010	07:31:02					.5bblback				
12/08/2010	07:31:02					Dropped the opening tool				
12/08/2010	07:31:02	910	0.0	8.38	528.4					
12/08/2010	07:32:10	227	0.0	8.38	528.4					
12/08/2010	07:34:40	-22	0.0	8.38	528.4					
12/08/2010	07:37:10	-21	0.0	8.38	528.4					
12/08/2010	07:39:40	-20	0.0	8.38	528.4					
12/08/2010	07:42:10	-20	0.0	8.38	528.4					
12/08/2010	07:44:40	-19	0.0	8.38	528.4					
12/08/2010	07:47:10	-18	0.0	8.38	528.4					
12/08/2010	07:49:39					wated 15 min				
12/08/2010	07:49:39	-6	0.1	8.38	528.4					
12/08/2010	07:49:40					pressued up to 735psi				
12/08/2010	07:49:40	-7	0.1	8.38	528.4					
12/08/2010	07:51:05					Opened up tool and circulated 10bbl				
12/08/2010	07:51:05	50	2.8	8.38	529.2					
12/08/2010	07:51:41					turned over to rig				
12/08/2010	07:51:41	51	3.3	8.38	531.2					

Well RGU 22-14-198 RGU 22-14-198			Field Ryan Gulch		Job Start Dec/08/2010		Customer Williams		Job Number 000457783	
Date	Time 24-hr clock	Treating Pressure PSI	Flow Rate B/M	Density LB/G	Volume BBL	Message				
12/08/2010	07:51:59	51	3.3	8.38	532.2					
12/08/2010	07:52:10	49	3.3	8.38	532.8					
12/08/2010	07:52:37					WOC 4 HRS.				
12/08/2010	07:52:37	51	3.3	8.38	534.3					
12/08/2010	11:54:39					START 2ND STAGE				
12/08/2010	11:54:39	-3	0.0	8.37	537.9					
12/08/2010	11:54:40	-3	0.0	8.37	537.9					
12/08/2010	11:55:21					Pre Job Safety Meeting				
12/08/2010	11:55:21	-10	0.0	8.37	537.9					
12/08/2010	11:55:24					Pressure Test Lines				
12/08/2010	11:55:24	-10	0.0	8.37	537.9					
12/08/2010	11:55:26					Low 500psi test = GOOD				
12/08/2010	11:55:26	-10	0.0	8.37	537.9					
12/08/2010	11:55:28					Pressure Test Lines				
12/08/2010	11:55:28	-10	0.0	8.37	537.9					
12/08/2010	11:55:30					High 3000psi test= GOOD				
12/08/2010	11:55:30	-10	0.0	8.37	537.9					
12/08/2010	11:55:48					Start Pumping Spacer				
12/08/2010	11:55:48	-11	0.0	8.37	537.9					
12/08/2010	11:55:52					20bbl fresh water				
12/08/2010	11:55:52	-11	0.0	8.37	537.9					
12/08/2010	11:55:53					No returns				
12/08/2010	11:55:53	-11	0.0	8.37	537.9					
12/08/2010	11:57:10	-11	0.0	8.37	537.9					
12/08/2010	11:59:40	19	1.6	8.36	539.4					
12/08/2010	12:02:10	3420	0.0	8.36	540.1					
12/08/2010	12:04:40	66	3.3	8.36	546.1					
12/08/2010	12:07:10	79	3.1	8.36	554.1					
12/08/2010	12:08:11					End Spacer				
12/08/2010	12:08:11	110	3.7	9.71	557.2					
12/08/2010	12:08:13					Start Cement Slurry				
12/08/2010	12:08:13	106	3.8	11.14	557.3					
12/08/2010	12:08:14					Start Mixing Scav Slurry				
12/08/2010	12:08:14	111	3.9	11.94	557.4					
12/08/2010	12:08:17					Reset Total, Vol = 535.56 bbl				
12/08/2010	12:08:17	107	3.8	12.48	557.6					
12/08/2010	12:09:40	361	6.5	12.64	563.4					
12/08/2010	12:12:10	377	6.5	12.94	579.8					
12/08/2010	12:14:40	363	6.5	12.82	596.1					
12/08/2010	12:17:10	370	6.5	12.89	612.5					
12/08/2010	12:19:40	359	6.6	12.84	628.8					
12/08/2010	12:22:10	134	3.6	12.82	639.0					
12/08/2010	12:24:40	136	3.6	12.90	648.0					
12/08/2010	12:25:47					End Scavenger Slurry				
12/08/2010	12:25:47	130	3.6	12.89	652.1					
12/08/2010	12:25:51					265bbl(870sks)				
12/08/2010	12:25:51					Mud Scale test				
12/08/2010	12:25:51	138	3.6	12.89	652.3					
12/08/2010	12:25:52					Reads 12.8ppg				
12/08/2010	12:25:52					Good returns				
12/08/2010	12:25:52	143	3.6	12.89	652.4					
12/08/2010	12:27:10	148	3.6	12.91	657.0					
12/08/2010	12:29:40	130	3.6	12.89	666.0					
12/08/2010	12:32:10	131	3.6	12.91	675.0					

Well RGU 22-14-198 RGU 22-14-198			Field Ryan Gulch		Job Start Dec/08/2010	Customer Williams	Job Number 000457783
Date	Time 24-hr clock	Treating Pressure PSI	Flow Rate B/M	Density LB/G	Volume BBL	Message	
12/08/2010	12:37:10	113	3.5	12.97	692.5		
12/08/2010	12:39:40	115	3.4	13.00	701.2		
12/08/2010	12:42:10	121	3.5	12.91	709.8		
12/08/2010	12:44:40	101	3.4	12.85	718.4		
12/08/2010	12:47:10	117	3.4	12.87	726.9		
12/08/2010	12:49:40	119	3.4	12.84	735.4		
12/08/2010	12:52:10	98	3.4	12.90	744.0		
12/08/2010	12:54:40	102	3.4	12.92	752.4		
12/08/2010	12:57:10	102	3.3	12.93	760.9		
12/08/2010	12:59:40	106	3.4	12.92	769.3		
12/08/2010	13:02:10	185	3.4	12.90	777.6		
12/08/2010	13:04:40	131	3.4	12.90	786.1		
12/08/2010	13:07:10	141	3.5	12.90	794.7		
12/08/2010	13:09:40	104	3.4	12.92	803.3		
12/08/2010	13:12:10	149	3.5	12.89	812.0		
12/08/2010	13:14:40	104	3.5	12.85	820.6		
12/08/2010	13:16:12					End Cement Slurry	
12/08/2010	13:16:12	114	3.5	12.86	825.9		
12/08/2010	13:16:14					Dropped Closing tool	
12/08/2010	13:16:14	12	3.3	12.86	826.0		
12/08/2010	13:16:15					Start 101bbl fresh water displacement	
12/08/2010	13:16:15					4bpm no returns	
12/08/2010	13:16:15	12	2.6	12.93	826.1		
12/08/2010	13:17:10	1	0.0	12.86	826.2		
12/08/2010	13:19:40	21	0.0	12.89	826.2		
12/08/2010	13:22:10	43	2.5	9.27	829.1		
12/08/2010	13:24:40	225	6.6	8.55	843.3		
12/08/2010	13:27:10	205	6.6	8.42	859.6		
12/08/2010	13:29:40	258	6.5	8.41	876.0		
12/08/2010	13:30:16					No returns after 40bbl away	
12/08/2010	13:30:16					Picked up rate to 6bpm	
12/08/2010	13:30:16	279	6.6	8.41	880.0		
12/08/2010	13:30:17					Got returns back	
12/08/2010	13:30:17	263	6.6	8.41	880.1		
12/08/2010	13:32:10	156	3.5	8.37	887.3		
12/08/2010	13:33:18					Slowed rate to 4bpm	
12/08/2010	13:33:18					1/2 returns back	
12/08/2010	13:33:18	168	3.5	8.38	891.4		
12/08/2010	13:34:40	158	3.5	8.38	896.2		
12/08/2010	13:37:10	212	3.5	8.38	905.0		
12/08/2010	13:39:40	217	3.5	8.38	913.8		
12/08/2010	13:42:10	175	2.5	8.38	921.1		
12/08/2010	13:44:40	199	2.5	8.38	927.4		
12/08/2010	13:45:32					lost returns at 85bbl away	
12/08/2010	13:45:32	930	0.0	8.38	929.0		
12/08/2010	13:47:10	1096	0.0	8.38	929.1		
12/08/2010	13:49:32					No returns when we bumped plug	
12/08/2010	13:49:32	-6	0.0	8.39	929.1		
12/08/2010	13:49:40	-6	0.0	8.39	929.1		
12/08/2010	13:49:44	-6	0.0	8.39	929.1		
12/08/2010	13:49:44					Held pressure for 5min	
12/08/2010	13:49:44					Bleed back 1/2 bbl	
12/08/2010	13:49:44					Holding	
12/08/2010	13:49:44					NO CEMENT TO SURFACE	

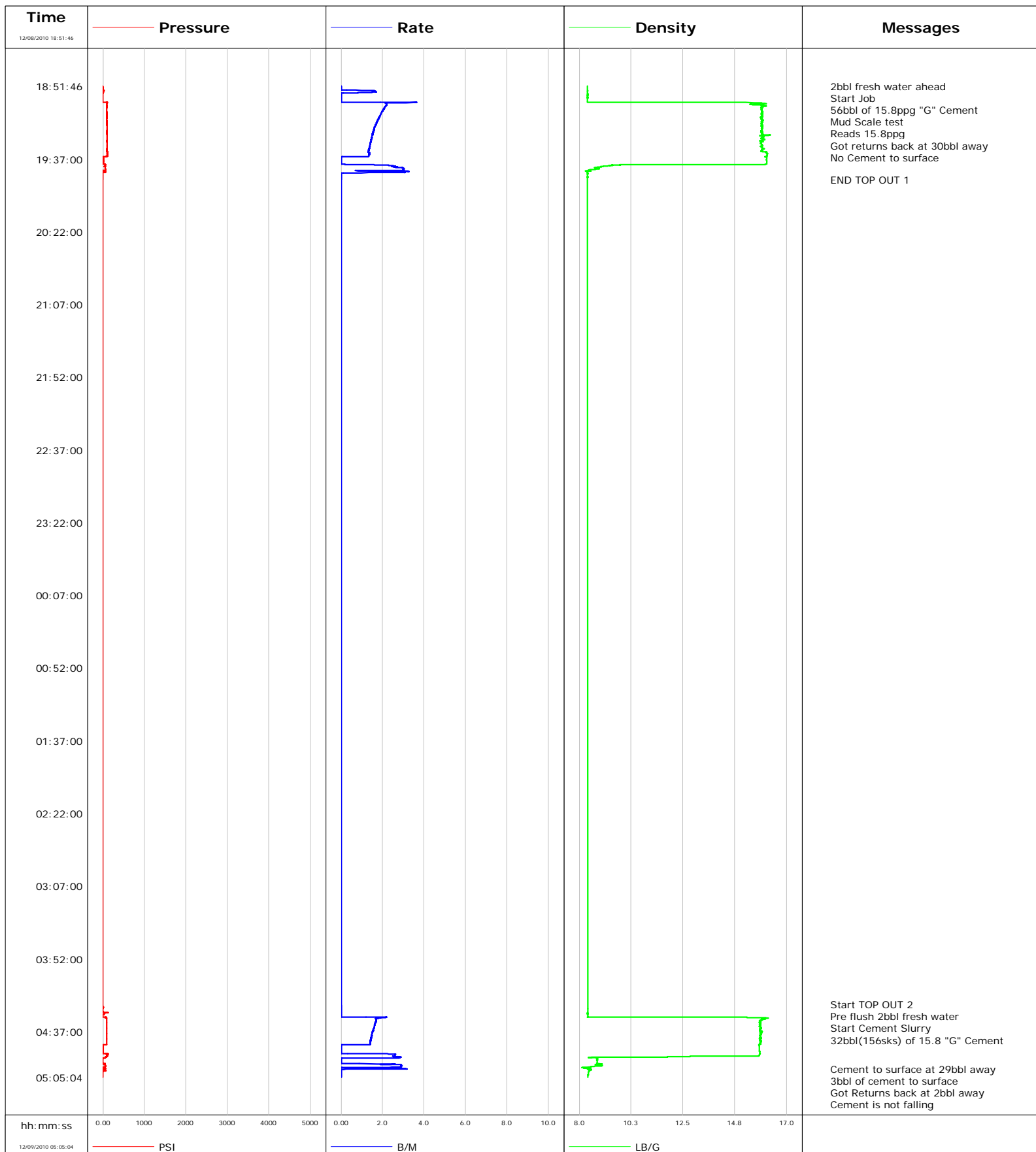
Well RGU 22-14-198 RGU 22-14-198	Field Ryan Gulch	Job Start Dec/08/2010	Customer Williams	Job Number 000457783
-------------------------------------	---------------------	--------------------------	----------------------	-------------------------

Post Job Summary

Average Pump Rates, bbl/min					Volume of Fluid Injected, bbl			
Slurry 6.0	N2	Mud 0.0	Maximum Rate 7.0		Total Slurry 510.0	Mud 203.0	Spacer 20.0	N2
Treating Pressure Summary, psi					Breakdown Fluid			
Maximum 3000	Final 230	Average 200	Bump Plug to 1000	Breakdown 325	Type FreshWater	Volume 936.0 bbl		Density 8.34 lb/gal
Avg. N2 Percent	Designed Slurry Volume 510.0 bbl		Displacement 248.7 bbl		Mix Water Temp 60 degF	Cement Circulated to Surface? <input checked="" type="checkbox"/>	Volume 0.0 bbl	
Customer or Authorized Representative Kenny Bascom			Schlumberger Supervisor Dustin C Krueger			Washed Thru Perfs <input type="checkbox"/>		To
						Circulation Lost <input type="checkbox"/>		Job Completed <input checked="" type="checkbox"/>
						-		-

Well RGU 22-14-198
Field Ryan Gulch
Engineer Dustin C Krueger
Country United States

Client Williams
SIR No. 000457783
Job Type Top out a 3252ft 9 5/8 2 Stage
Job Date 12-08-2010



Cementing Service Report

				Customer			Job Number				
				Williams			000457783				
Well		Location (legal)			Schlumberger Location			Job Start			
RGU 22-14-198 RGU 22-14-198		RGU 22-14-198			Grand Junction			Dec/08/2010			
Field		Formation Name/Type		Deviation	Bit Size		Well MD		Well TVD		
Ryan Gulch		Shale		0 deg	13.5 in		3252.0 ft		3252.0 ft		
County		State/Province		BHP	BHST	BHCT	Pore Press. Gradient				
Rio Blanco		Colorado									
Well Master		API /UWI			120 degF	97 degF					
Rig Name		Drilled For	Service Via	Casing/Liner							
Frontier 11		Gas	Land	Depth, ft	Size, in	Weight, lb/ft	Grade		Thread		
Offshore Zone		Well Class	Well Type	80.0	18.000	94.0	N/A		N/A		
		New	Development	3252.0	9.630	36.0	J55		8RD		
Drilling Fluid Type		Max. Density	Plastic Viscosity	Tubing/Drill Pipe							
Bentonite		8.70 lb/gal	6.000 cP	Depth,	Size,	Weight,	Grade		Thread		
Service Line		Job Type									
Cementing		3252ft 9 5/8 2 Stage Surface									
Max. Allowed Tub. Press		Max. Allowed Ann. Press	WH Connection		Perforations/Open Hole						
3000 psi		500 psi	Single Cement head		Top,	Bottom,		No. of Shots	Total Interval		
Service Instructions Top out 9 5/8 surface 2 stage											
											Diameter
				Treat Down	Displacement	Packer Type	Packer Depth				
Casing	248.7 bbl										
Tubing Vol.	Casing Vol.	Annular Vol.	Openhole Vol.								
	251.4 bbl	293.0 bbl	669.0 bbl								
Casing/Tubing Secured		<input checked="" type="checkbox"/>	1 Hole Vol. Circulated prior to Cement		<input checked="" type="checkbox"/>	Casing Tools		Squeeze Job			
Lift Pressure		490 psi		Shoe Type		Guide		Squeeze Type			
Pipe Rotated		<input type="checkbox"/>	Pipe Reciprocated		<input type="checkbox"/>	Shoe Depth		3252.0 ft			
Tool Type											
No. Centralizers		10	Top Plugs	2	Bottom Plugs		Stage Tool Type		DV		
Tool Depth											
Cement Head Type		Single			Stage Tool Depth		1309.0 ft		Tail Pipe Size		
Job Scheduled For		Arrived on Location		Leave Location		Collar Type		Float			
Dec/08/2010 03:00		Dec/08/2010 03:00		Dec/08/2010 18:00		Collar Depth		3217.0 ft			
Sqz. Total Vol.											
Date	Time 24-hr clock	Treating Pressure PSI	Flow Rate B/M	Density LB/G	Volume BBL	Message					
12/08/2010	18:51:32					Started Acquisition					
12/08/2010	18:51:36					PRE JOB SAFETY MEETING					
12/08/2010	18:51:46	-3	0.0	8.36	0.0						
12/08/2010	18:51:50					2bbl fresh water ahead					
12/08/2010	18:51:50	-3	0.0	8.36	0.0						
12/08/2010	18:51:52					Start Job					
12/08/2010	18:51:52	-3	0.0	8.36	0.0						
12/08/2010	18:51:59					56bbl of 15.8ppg "G" Cement					
12/08/2010	18:51:59					Mud Scale test					
12/08/2010	18:51:59	-3	0.0	8.36	0.0						
12/08/2010	18:52:00					Reads 15.8ppg					
12/08/2010	18:52:00					Got returns back at 30bbl away					
12/08/2010	18:52:00					No Cement to surface					
12/08/2010	18:52:00	-3	0.0	8.36	0.0						
12/08/2010	18:54:02	-1	0.0	8.36	0.0						
12/08/2010	18:56:32	-5	0.0	8.36	2.3						
12/08/2010	18:59:02	-5	0.0	8.36	2.3						
12/08/2010	19:01:32	-3	0.0	8.36	2.3						
12/08/2010	19:04:02	95	2.2	15.96	6.8						
12/08/2010	19:06:32	94	2.0	15.91	12.0						
12/08/2010											

Well RGU 22-14-198 RGU 22-14-198			Field Ryan Gulch		Job Start Dec/08/2010	Customer Williams	Job Number 000457783
Date	Time 24-hr clock	Treating Pressure PSI	Flow Rate B/M	Density LB/G	Volume BBL	Message	
12/08/2010	19:14:02	96	1.7	15.91	26.1		
12/08/2010	19:16:32	97	1.6	15.88	30.3		
12/08/2010	19:19:02	97	1.6	15.92	34.3		
12/08/2010	19:21:32	96	1.5	15.94	38.2		
12/08/2010	19:24:02	100	1.5	15.89	42.0		
12/08/2010	19:26:32	96	1.4	15.92	45.6		
12/08/2010	19:29:02	97	1.4	15.94	49.1		
12/08/2010	19:31:32	96	1.3	15.96	52.5		
12/08/2010	19:34:02	108	1.4	16.16	55.8		
12/08/2010	19:36:32	11	0.0	16.13	58.0		
12/08/2010	19:39:02	12	0.0	16.13	58.0		
12/08/2010	19:41:32	50	2.6	9.04	60.4		
12/08/2010	19:44:02	53	3.0	8.40	67.6		
12/08/2010	19:46:32	-3	0.0	8.36	71.4		
12/08/2010	19:49:02	-3	0.0	8.36	71.4		
12/08/2010	19:49:48					END TOP OUT 1	
12/08/2010	19:49:48	-3	0.0	8.36	71.4		
12/09/2010	04:20:59					Pre flush 2bbl fresh water	
12/09/2010	04:20:59	-3	0.0	8.37	71.4		
12/09/2010	04:21:00					Start Cement Slurry	
12/09/2010	04:21:00					32bbl(156sks) of 15.8 "G" Cement	
12/09/2010	04:21:00	-3	0.0	8.37	71.4		
12/09/2010	04:21:32	-2	0.0	8.37	71.4		
12/09/2010	04:24:02	-3	0.0	8.37	71.4		
12/09/2010	04:26:32	-1	0.0	8.37	71.4		
12/09/2010	04:29:02	90	1.7	15.99	73.4		
12/09/2010	04:31:32	93	1.6	15.84	77.6		
12/09/2010	04:34:02	92	1.6	15.85	81.6		
12/09/2010	04:36:32	92	1.5	15.85	85.6		
12/09/2010	04:39:02	92	1.5	15.86	89.3		
12/09/2010	04:41:32	92	1.4	15.84	93.0		
12/09/2010	04:44:02	94	1.4	15.85	96.5		
12/09/2010	04:46:32	4	0.0	15.81	97.9		
12/09/2010	04:49:02	6	0.0	15.82	97.9		
12/09/2010	04:51:32	112	2.6	15.82	100.4		
12/09/2010	04:54:02	-3	0.0	8.76	104.9		
12/09/2010	04:56:32	9	0.0	8.77	104.9		
12/09/2010	04:59:02	-0	1.6	8.12	111.0		
12/09/2010	05:00:00					Cement to surface at 29bbl away	
12/09/2010	05:00:00	39	3.0	8.38	112.4		
12/09/2010	05:01:32	0	0.0	8.41	112.7		
12/09/2010	05:02:00					3bbl of cement to surface	
12/09/2010	05:02:00	-4	0.0	8.41	112.7		
12/09/2010	05:02:01					Got Returns back at 2bbl away	
12/09/2010	05:02:01	-4	0.0	8.41	112.7		
12/09/2010	05:04:00					Cement is not falling	
12/09/2010	05:04:00	-6	0.0	8.38	112.7		
12/09/2010	05:04:02	-6	0.0	8.38	112.7		
12/09/2010	05:05:06					Stopped Acquisition	

Well RGU 22-14-198 RGU 22-14-198	Field Ryan Gulch	Job Start Dec/08/2010	Customer Williams	Job Number 000457783
-------------------------------------	---------------------	--------------------------	----------------------	-------------------------

Post Job Summary

Average Pump Rates, bbl/min					Volume of Fluid Injected, bbl			
Slurry 6.0	N2	Mud 0.0	Maximum Rate 7.0	Total Slurry 510.0	Mud 203.0	Spacer 20.0	N2	
Treating Pressure Summary, psi					Breakdown Fluid			
Maximum 3000	Final 230	Average 200	Bump Plug to 1000	Breakdown 325	Type FreshWater	Volume 936.0 bbl	Density 8.34 lb/gal	
Avg. N2 Percent	Designed Slurry Volume 510.0 bbl		Displacement 248.7 bbl	Mix Water Temp 60 degF	Cement Circulated to Surface? <input checked="" type="checkbox"/>	Volume 3.0 bbl		
					Washed Thru Perfs <input type="checkbox"/>	To		
Customer or Authorized Representative Kenny Bascom			Schlumberger Supervisor Dustin C Krueger			Circulation Lost <input type="checkbox"/>	Job Completed <input checked="" type="checkbox"/>	
						-	-	