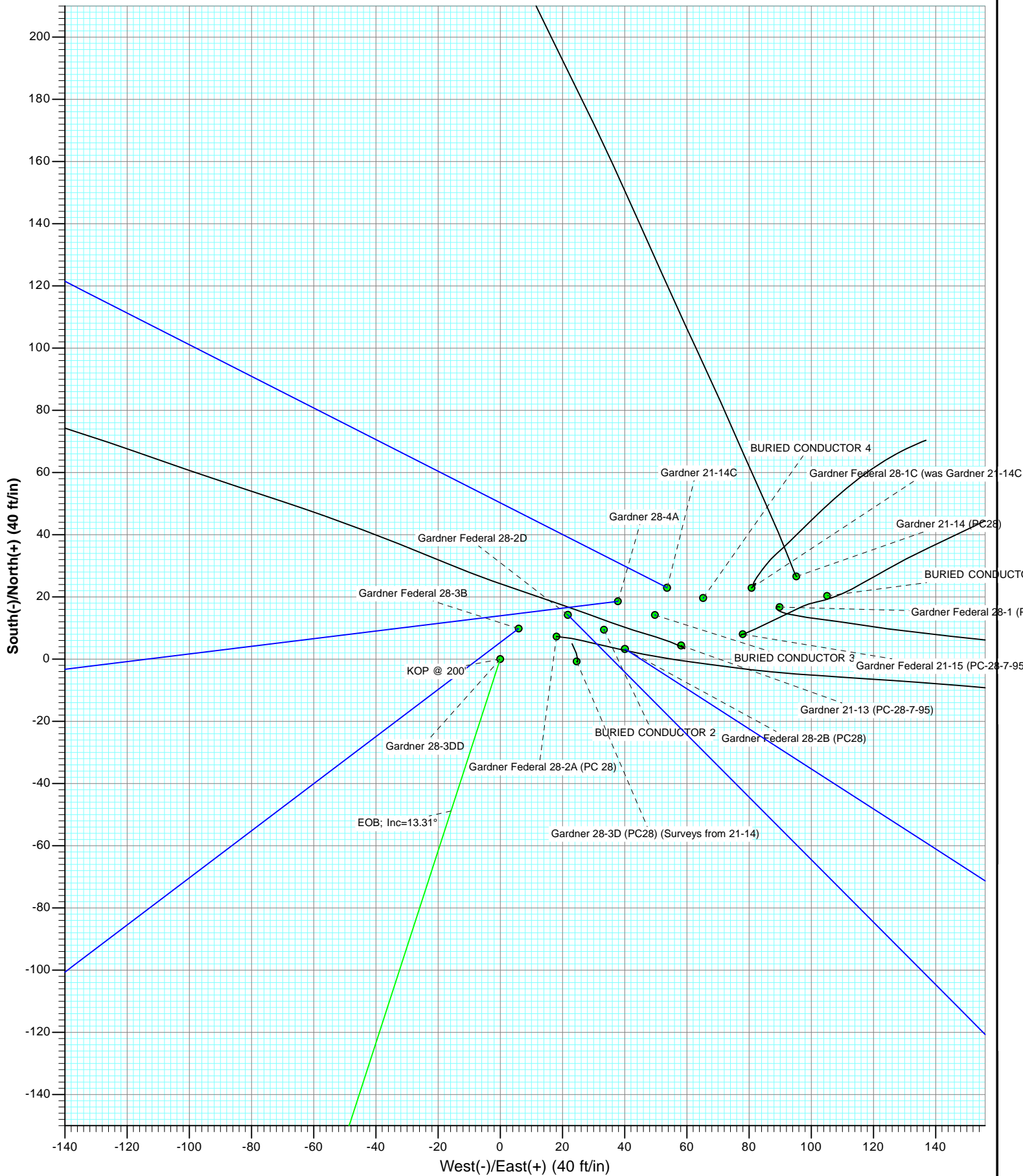


Plan #1 Gardner 28-3DD 1250XX; SC KBE @ 6442.0ft (Nabors M13) GL @ 6420.0 North American Datum 1983 Well Gardner 28-3DD, True North							
Type	Target	Azimuth	Origin Type	N/S	E/W	From TVD	
Target	Gardner 28-3DD (PC28)	BHL	Slot	0.0	0.0	0.0	
		BVD	+N/-S	+E/-W	Latitude	Longitude	
Gardner 28-3DD (PC28) TGT		5264.0	-1014.4	-328.6	39.412757	-108.004708	
Gardner 28-3DD (PC28) BHL		7287.0	-1014.4	-328.6	39.412757	-108.004708	



Planning Report

Database:	USA EDM 5000 Multi Users DB	Local Co-ordinate Reference:	Well Gardner 28-3DD
Company:	EnCana Oil & Gas (USA) Inc	TVD Reference:	KBE @ 6442.0ft (Nabors M13)
Project:	S. Piceance (Parachute)	MD Reference:	KBE @ 6442.0ft (Nabors M13)
Site:	NENW Sec28-T7S-R95W (PC-28)	North Reference:	True
Well:	Gardner 28-3DD	Survey Calculation Method:	Minimum Curvature
Wellbore:	DD		
Design:	Plan #1		

Project	S. Piceance (Parachute), Garfield County, CO		
Map System:	US State Plane 1983	System Datum:	Mean Sea Level
Geo Datum:	North American Datum 1983		
Map Zone:	Colorado Central Zone		

Site	NENW Sec28-T7S-R95W (PC-28)			
Site Position:		Northing:	1,585,994.78 ft	Latitude: 39.415560
From:	Lat/Long	Easting:	2,292,840.18 ft	Longitude: -108.003350
Position Uncertainty:	0.0 ft	Slot Radius:	13.200 in	Grid Convergence: -1.58 °

Well	Gardner 28-3DD			
Well Position	+N/-S	0.0 ft	Northing:	1,585,989.75 ft
	+E/-W	0.0 ft	Easting:	2,292,784.92 ft
Position Uncertainty		0.0 ft	Wellhead Elevation:	ft
			Ground Level:	6,420.0 ft

Wellbore	DD				
Magnetics	Model Name	Sample Date	Declination (°)	Dip Angle (°)	Field Strength (nT)
	IGRF2010	5/2/2012	10.23	65.65	52,113

Design	Plan #1			
Audit Notes:				
Version:	Phase:	PLAN	Tie On Depth:	0.0
Vertical Section:	Depth From (TVD) (ft)	+N/-S (ft)	+E/-W (ft)	Direction (°)
	0.0	0.0	0.0	0.00

Plan Sections										
Measured Depth (ft)	Inclination (°)	Azimuth (°)	Vertical Depth (ft)	+N/-S (ft)	+E/-W (ft)	Dogleg Rate (°/100ft)	Build Rate (°/100ft)	Turn Rate (°/100ft)	TFO (°)	Target
0.0	0.00	0.00	0.0	0.0	0.0	0.00	0.00	0.00	0.00	
200.0	0.00	0.00	200.0	0.0	0.0	0.00	0.00	0.00	0.00	
643.7	13.31	197.95	639.7	-48.8	-15.8	3.00	3.00	0.00	197.95	
4,717.9	13.31	197.95	4,604.4	-941.2	-304.9	0.00	0.00	0.00	0.00	
5,383.4	0.00	0.00	5,264.0	-1,014.4	-328.6	2.00	-2.00	0.00	180.00	Gardner 28-3DD (PC-28)
7,406.4	0.00	0.00	7,287.0	-1,014.4	-328.6	0.00	0.00	0.00	0.00	Gardner 28-3DD (PC-28)
7,506.4	0.00	0.00	7,387.0	-1,014.4	-328.6	0.00	0.00	0.00	0.00	

Planning Report

Database:	USA EDM 5000 Multi Users DB	Local Co-ordinate Reference:	Well Gardner 28-3DD
Company:	EnCana Oil & Gas (USA) Inc	TVD Reference:	KBE @ 6442.0ft (Nabors M13)
Project:	S. Piceance (Parachute)	MD Reference:	KBE @ 6442.0ft (Nabors M13)
Site:	NENW Sec28-T7S-R95W (PC-28)	North Reference:	True
Well:	Gardner 28-3DD	Survey Calculation Method:	Minimum Curvature
Wellbore:	DD		
Design:	Plan #1		

Planned Survey

Measured Depth (ft)	Inclination (°)	Azimuth (°)	Vertical Depth (ft)	+N/-S (ft)	+E/-W (ft)	Vertical Section (ft)	Dogleg Rate (°/100ft)	Build Rate (°/100ft)	Comments / Formations
0.0	0.00	0.00	0.0	0.0	0.0	0.0	0.00	0.00	
100.0	0.00	0.00	100.0	0.0	0.0	0.0	0.00	0.00	
200.0	0.00	0.00	200.0	0.0	0.0	0.0	0.00	0.00	KOP @ 200'
300.0	3.00	197.95	300.0	-2.5	-0.8	-2.5	3.00	3.00	
400.0	6.00	197.95	399.6	-10.0	-3.2	-10.0	3.00	3.00	
500.0	9.00	197.95	498.8	-22.4	-7.2	-22.4	3.00	3.00	
600.0	12.00	197.95	597.1	-39.7	-12.9	-39.7	3.00	3.00	
643.7	13.31	197.95	639.7	-48.8	-15.8	-48.8	3.00	3.00	EOB; Inc=13.31°
700.0	13.31	197.95	694.5	-61.1	-19.8	-61.1	0.00	0.00	
800.0	13.31	197.95	791.8	-83.0	-26.9	-83.0	0.00	0.00	
900.0	13.31	197.95	889.1	-104.9	-34.0	-104.9	0.00	0.00	
1,000.0	13.31	197.95	986.4	-126.9	-41.1	-126.9	0.00	0.00	
1,100.0	13.31	197.95	1,083.8	-148.8	-48.2	-148.8	0.00	0.00	
1,126.2	13.31	197.95	1,109.3	-154.5	-50.0	-154.5	0.00	0.00	Surface Casing
1,200.0	13.31	197.95	1,181.1	-170.7	-55.3	-170.7	0.00	0.00	
1,300.0	13.31	197.95	1,278.4	-192.6	-62.4	-192.6	0.00	0.00	
1,400.0	13.31	197.95	1,375.7	-214.5	-69.5	-214.5	0.00	0.00	
1,500.0	13.31	197.95	1,473.0	-236.4	-76.6	-236.4	0.00	0.00	
1,600.0	13.31	197.95	1,570.3	-258.3	-83.7	-258.3	0.00	0.00	
1,700.0	13.31	197.95	1,667.6	-280.2	-90.8	-280.2	0.00	0.00	
1,800.0	13.31	197.95	1,765.0	-302.1	-97.9	-302.1	0.00	0.00	
1,900.0	13.31	197.95	1,862.3	-324.0	-104.9	-324.0	0.00	0.00	
2,000.0	13.31	197.95	1,959.6	-345.9	-112.0	-345.9	0.00	0.00	
2,100.0	13.31	197.95	2,056.9	-367.8	-119.1	-367.8	0.00	0.00	
2,200.0	13.31	197.95	2,154.2	-389.7	-126.2	-389.7	0.00	0.00	
2,300.0	13.31	197.95	2,251.5	-411.6	-133.3	-411.6	0.00	0.00	
2,400.0	13.31	197.95	2,348.8	-433.5	-140.4	-433.5	0.00	0.00	
2,500.0	13.31	197.95	2,446.2	-455.4	-147.5	-455.4	0.00	0.00	
2,600.0	13.31	197.95	2,543.5	-477.3	-154.6	-477.3	0.00	0.00	
2,700.0	13.31	197.95	2,640.8	-499.2	-161.7	-499.2	0.00	0.00	
2,800.0	13.31	197.95	2,738.1	-521.1	-168.8	-521.1	0.00	0.00	
2,900.0	13.31	197.95	2,835.4	-543.0	-175.9	-543.0	0.00	0.00	
3,000.0	13.31	197.95	2,932.7	-564.9	-183.0	-564.9	0.00	0.00	
3,100.0	13.31	197.95	3,030.0	-586.8	-190.1	-586.8	0.00	0.00	
3,200.0	13.31	197.95	3,127.3	-608.7	-197.2	-608.7	0.00	0.00	
3,300.0	13.31	197.95	3,224.7	-630.6	-204.3	-630.6	0.00	0.00	
3,400.0	13.31	197.95	3,322.0	-652.5	-211.4	-652.5	0.00	0.00	
3,500.0	13.31	197.95	3,419.3	-674.4	-218.5	-674.4	0.00	0.00	
3,600.0	13.31	197.95	3,516.6	-696.3	-225.6	-696.3	0.00	0.00	
3,700.0	13.31	197.95	3,613.9	-718.2	-232.7	-718.2	0.00	0.00	
3,800.0	13.31	197.95	3,711.2	-740.1	-239.7	-740.1	0.00	0.00	
3,900.0	13.31	197.95	3,808.5	-762.0	-246.8	-762.0	0.00	0.00	
4,000.0	13.31	197.95	3,905.9	-783.9	-253.9	-783.9	0.00	0.00	
4,100.0	13.31	197.95	4,003.2	-805.8	-261.0	-805.8	0.00	0.00	
4,120.4	13.31	197.95	4,023.0	-810.3	-262.5	-810.3	0.00	0.00	Ohio Creek
4,200.0	13.31	197.95	4,100.5	-827.7	-268.1	-827.7	0.00	0.00	
4,284.8	13.31	197.95	4,183.0	-846.3	-274.1	-846.3	0.00	0.00	Mesaverde
4,300.0	13.31	197.95	4,197.8	-849.6	-275.2	-849.6	0.00	0.00	
4,400.0	13.31	197.95	4,295.1	-871.5	-282.3	-871.5	0.00	0.00	
4,500.0	13.31	197.95	4,392.4	-893.4	-289.4	-893.4	0.00	0.00	
4,600.0	13.31	197.95	4,489.7	-915.3	-296.5	-915.3	0.00	0.00	
4,700.0	13.31	197.95	4,587.1	-937.2	-303.6	-937.2	0.00	0.00	

Planning Report

Database:	USA EDM 5000 Multi Users DB	Local Co-ordinate Reference:	Well Gardner 28-3DD
Company:	EnCana Oil & Gas (USA) Inc	TVD Reference:	KBE @ 6442.0ft (Nabors M13)
Project:	S. Piceance (Parachute)	MD Reference:	KBE @ 6442.0ft (Nabors M13)
Site:	NENW Sec28-T7S-R95W (PC-28)	North Reference:	True
Well:	Gardner 28-3DD	Survey Calculation Method:	Minimum Curvature
Wellbore:	DD		
Design:	Plan #1		

Planned Survey									
Measured Depth (ft)	Inclination (°)	Azimuth (°)	Vertical Depth (ft)	+N/-S (ft)	+E/-W (ft)	Vertical Section (ft)	Dogleg Rate (°/100ft)	Build Rate (°/100ft)	Comments / Formations
4,717.9	13.31	197.95	4,604.4	-941.2	-304.9	-941.2	0.00	0.00	Start Drop -2.00
4,800.0	11.67	197.95	4,684.6	-958.1	-310.3	-958.1	2.00	-2.00	
4,900.0	9.67	197.95	4,782.9	-975.7	-316.0	-975.7	2.00	-2.00	
5,000.0	7.67	197.95	4,881.7	-990.0	-320.7	-990.0	2.00	-2.00	
5,082.8	6.01	197.95	4,964.0	-999.4	-323.7	-999.4	2.00	-2.00	Williams Fork
5,100.0	5.67	197.95	4,981.1	-1,001.1	-324.3	-1,001.1	2.00	-2.00	
5,200.0	3.67	197.95	5,080.7	-1,008.8	-326.8	-1,008.8	2.00	-2.00	
5,300.0	1.67	197.95	5,180.6	-1,013.2	-328.2	-1,013.2	2.00	-2.00	
5,383.4	0.00	0.00	5,264.0	-1,014.4	-328.6	-1,014.4	2.00	-2.00	EOD; Inc=0° - Top of Gas - Gardner 28-3D (PC;
5,400.0	0.00	0.00	5,280.6	-1,014.4	-328.6	-1,014.4	0.00	0.00	
5,500.0	0.00	0.00	5,380.6	-1,014.4	-328.6	-1,014.4	0.00	0.00	
5,600.0	0.00	0.00	5,480.6	-1,014.4	-328.6	-1,014.4	0.00	0.00	
5,700.0	0.00	0.00	5,580.6	-1,014.4	-328.6	-1,014.4	0.00	0.00	
5,800.0	0.00	0.00	5,680.6	-1,014.4	-328.6	-1,014.4	0.00	0.00	
5,900.0	0.00	0.00	5,780.6	-1,014.4	-328.6	-1,014.4	0.00	0.00	
6,000.0	0.00	0.00	5,880.6	-1,014.4	-328.6	-1,014.4	0.00	0.00	
6,100.0	0.00	0.00	5,980.6	-1,014.4	-328.6	-1,014.4	0.00	0.00	
6,200.0	0.00	0.00	6,080.6	-1,014.4	-328.6	-1,014.4	0.00	0.00	
6,300.0	0.00	0.00	6,180.6	-1,014.4	-328.6	-1,014.4	0.00	0.00	
6,400.0	0.00	0.00	6,280.6	-1,014.4	-328.6	-1,014.4	0.00	0.00	
6,500.0	0.00	0.00	6,380.6	-1,014.4	-328.6	-1,014.4	0.00	0.00	
6,600.0	0.00	0.00	6,480.6	-1,014.4	-328.6	-1,014.4	0.00	0.00	
6,700.0	0.00	0.00	6,580.6	-1,014.4	-328.6	-1,014.4	0.00	0.00	
6,800.0	0.00	0.00	6,680.6	-1,014.4	-328.6	-1,014.4	0.00	0.00	
6,866.4	0.00	0.00	6,747.0	-1,014.4	-328.6	-1,014.4	0.00	0.00	Coal Ridge
6,900.0	0.00	0.00	6,780.6	-1,014.4	-328.6	-1,014.4	0.00	0.00	
7,000.0	0.00	0.00	6,880.6	-1,014.4	-328.6	-1,014.4	0.00	0.00	
7,100.0	0.00	0.00	6,980.6	-1,014.4	-328.6	-1,014.4	0.00	0.00	
7,200.0	0.00	0.00	7,080.6	-1,014.4	-328.6	-1,014.4	0.00	0.00	
7,256.4	0.00	0.00	7,137.0	-1,014.4	-328.6	-1,014.4	0.00	0.00	Rollins SS
7,300.0	0.00	0.00	7,180.6	-1,014.4	-328.6	-1,014.4	0.00	0.00	
7,400.0	0.00	0.00	7,280.6	-1,014.4	-328.6	-1,014.4	0.00	0.00	
7,406.4	0.00	0.00	7,287.0	-1,014.4	-328.6	-1,014.4	0.00	0.00	Drillers TD @ 7406' MD - Gardner 28-3DD (PC;
7,500.0	0.00	0.00	7,380.6	-1,014.4	-328.6	-1,014.4	0.00	0.00	
7,506.4	0.00	0.00	7,387.0	-1,014.4	-328.6	-1,014.4	0.00	0.00	Permit TD @ 7506' MD

Planning Report

Database:	USA EDM 5000 Multi Users DB	Local Co-ordinate Reference:	Well Gardner 28-3DD
Company:	EnCana Oil & Gas (USA) Inc	TVD Reference:	KBE @ 6442.0ft (Nabors M13)
Project:	S. Piceance (Parachute)	MD Reference:	KBE @ 6442.0ft (Nabors M13)
Site:	NENW Sec28-T7S-R95W (PC-28)	North Reference:	True
Well:	Gardner 28-3DD	Survey Calculation Method:	Minimum Curvature
Wellbore:	DD		
Design:	Plan #1		

Targets									
Target Name									
- hit/miss target	Dip Angle	Dip Dir.	TVD	+N/-S	+E/-W	Northing	Easting	Latitude	Longitude
- Shape	(°)	(°)	(ft)	(ft)	(ft)	(ft)	(ft)		
Gardner 28-3D (PC28) 1 - plan hits target center - Circle (radius 25.0)	0.00	358.42	5,264.0	-1,014.4	-328.6	1,584,984.81	2,292,428.51	39.412757	-108.004708
Gardner 28-3DD (PC28) - plan hits target center - Circle (radius 25.0)	0.00	358.42	5,264.0	-1,014.4	-328.6	1,584,984.81	2,292,428.51	39.412757	-108.004708
Gardner 28-3DD (PC28) - plan hits target center - Circle (radius 25.0)	0.00	358.42	7,287.0	-1,014.4	-328.6	1,584,984.81	2,292,428.51	39.412757	-108.004708
Gardner 28-3D (PC28) E - plan hits target center - Circle (radius 25.0)	0.00	358.42	7,287.0	-1,014.4	-328.6	1,584,984.81	2,292,428.51	39.412757	-108.004708

Casing Points				
	Measured Depth	Vertical Depth		
	(ft)	(ft)	Name	
				Casing Diameter (in) Hole Diameter (in)
	1,126.2	1,109.3	Surface Casing	0.000 0.000

Formations					
	Measured Depth	Vertical Depth			
	(ft)	(ft)	Name	Lithology	Dip (°) Dip Direction (°)
	4,120.4	4,023.0	Ohio Creek		0.00
	4,284.8	4,183.0	Mesaverde		0.00
	5,082.8	4,964.0	Williams Fork		0.00
	5,383.4	5,264.0	Top of Gas		0.00
	6,866.4	6,747.0	Coal Ridge		0.00
	7,256.4	7,137.0	Rollins SS		0.00

Plan Annotations				
	Measured Depth	Vertical Depth	Local Coordinates	
	(ft)	(ft)	+N/-S (ft)	+E/-W (ft)
				Comment
	200.0	200.0	0.0	0.0
	643.7	639.7	-48.8	-15.8
	4,717.9	4,604.4	-941.2	-304.9
	5,383.4	5,264.0	-1,014.4	-328.6
	7,406.4	7,287.0	-1,014.4	-328.6
	7,506.4	7,387.0	-1,014.4	-328.6

EnCana Oil & Gas (USA) Inc

S. Piceance (Parachute)

NENW Sec28-T7S-R95W (PC-28)

Gardner 28-3DD

DD

Plan #1

Anticollision Report

22 May, 2012

Anticollision Report

Company:	EnCana Oil & Gas (USA) Inc	Local Co-ordinate Reference:	Well Gardner 28-3DD
Project:	S. Piceance (Parachute)	TVD Reference:	KBE @ 6442.0ft (Nabors M13)
Reference Site:	NENW Sec28-T7S-R95W (PC-28)	MD Reference:	KBE @ 6442.0ft (Nabors M13)
Site Error:	0.0ft	North Reference:	True
Reference Well:	Gardner 28-3DD	Survey Calculation Method:	Minimum Curvature
Well Error:	0.0ft	Output errors are at	2.00 sigma
Reference Wellbore	DD	Database:	USA EDM 5000 Multi Users DB
Reference Design:	Plan #1	Offset TVD Reference:	Offset Datum

Reference	Plan #1		
Filter type:	NO GLOBAL FILTER: Using user defined selection & filtering criteria		
Interpolation Method:	Stations	Error Model:	Systematic Ellipse
Depth Range:	Unlimited	Scan Method:	Closest Approach 3D
Results Limited by:	Maximum center-center distance of 500.0ft	Error Surface:	Elliptical Conic
Warning Levels Evaluated at:	2.00 Sigma		

Survey Tool Program		Date	5/22/2012		
From (ft)	To (ft)	Survey (Wellbore)	Tool Name	Description	
0.0	7,506.4	Plan #1 (DD)	MWD	Geolink MWD	

Summary						
Site Name	Reference Measured Depth (ft)	Offset Measured Depth (ft)	Distance Between Centres (ft)	Distance Between Ellipses (ft)	Separation Factor	Warning
NENW Sec28-T7S-R95W (PC-28)						
BURIED CONDUCTOR 2 - DD - Conductor	0.0	0.0	34.7			
BURIED CONDUCTOR 2 - DD - Conductor	100.0	50.0	60.8	60.7	328.830	SF
BURIED CONDUCTOR 3 - DD - Conductor	0.0	0.0	51.7			
BURIED CONDUCTOR 3 - DD - Conductor	100.0	50.0	71.9	71.7	388.789	SF
BURIED CONDUCTOR 4 - DD - Conductor	0.0	0.0	68.2			
BURIED CONDUCTOR 4 - DD - Conductor	500.0	50.0	456.5	455.5	437.701	SF
Gardner 21-13 (PC-28-7-95) - DD - DD	100.0	89.8	58.6	58.3	213.350	CC, ES
Gardner 21-13 (PC-28-7-95) - DD - DD	600.0	589.5	80.9	78.7	37.570	SF
Gardner 21-14 (PC28) - DD - DD	216.9	217.4	98.6	97.9	142.646	CC, ES
Gardner 21-14 (PC28) - DD - DD	600.0	587.9	141.4	139.0	60.115	SF
Gardner 21-14C - DD - Plan #1	200.0	200.0	58.4	57.8	93.956	CC, ES
Gardner 21-14C - DD - Plan #1	600.0	598.9	86.0	83.8	39.237	SF
Gardner 28-3D (PC28) (Surveys from 21-14) - DD - DD	0.0	0.0	24.6			
Gardner 28-3D (PC28) (Surveys from 21-14) - DD - DD	235.5	235.6	24.8	24.0	33.006	ES
Gardner 28-3D (PC28) (Surveys from 21-14) - DD - DD	300.0	300.4	25.2	24.2	25.429	SF
Gardner 28-4A - DD - Plan #1	200.0	200.0	42.2	41.5	67.870	CC, ES
Gardner 28-4A - DD - Plan #1	900.0	894.3	116.0	111.4	25.437	SF
Gardner Federal 21-15 (PC-28-7-95) - DD - DD	199.2	189.2	78.1	77.5	126.973	CC
Gardner Federal 21-15 (PC-28-7-95) - DD - DD	200.0	190.0	78.1	77.5	126.380	ES
Gardner Federal 21-15 (PC-28-7-95) - DD - DD	600.0	582.3	105.5	103.3	48.362	SF
Gardner Federal 28-1 (PC28) - DD - DD	221.4	221.8	90.3	89.6	129.371	CC, ES
Gardner Federal 28-1 (PC28) - DD - DD	643.7	620.4	146.6	144.1	59.936	SF
Gardner Federal 28-1C (was Gardner 21-14C PC28) - DD	0.0	0.0	84.0			
Gardner Federal 28-1C (was Gardner 21-14C PC28) - DD	600.0	592.3	116.9	114.9	58.167	SF
Gardner Federal 28-2A (PC 28) - DD - DD	0.0	0.0	19.5			
Gardner Federal 28-2A (PC 28) - DD - DD	100.0	100.0	19.5	19.3	95.410	ES
Gardner Federal 28-2A (PC 28) - DD - DD	300.0	298.8	25.3	24.6	34.560	SF
Gardner Federal 28-2B (PC28) - DD - Plan #6	200.0	200.0	40.3	39.6	64.781	CC, ES
Gardner Federal 28-2B (PC28) - DD - Plan #6	500.0	492.5	67.9	66.1	36.592	SF
Gardner Federal 28-2D - DD - Plan #1	200.0	200.0	26.0	25.4	41.815	CC, ES
Gardner Federal 28-2D - DD - Plan #1	400.0	399.3	35.3	34.0	26.067	SF
Gardner Federal 28-3B - DD - Plan #1	200.0	200.0	11.5	10.9	18.485	CC, ES
Gardner Federal 28-3B - DD - Plan #1	400.0	400.5	18.4	17.1	13.964	SF

CC - Min centre to center distance or convergent point, SF - min separation factor, ES - min ellipse separation

Anticollision Report

Company:	EnCana Oil & Gas (USA) Inc	Local Co-ordinate Reference:	Well Gardner 28-3DD
Project:	S. Piceance (Parachute)	TVD Reference:	KBE @ 6442.0ft (Nabors M13)
Reference Site:	NENW Sec28-T7S-R95W (PC-28)	MD Reference:	KBE @ 6442.0ft (Nabors M13)
Site Error:	0.0ft	North Reference:	True
Reference Well:	Gardner 28-3DD	Survey Calculation Method:	Minimum Curvature
Well Error:	0.0ft	Output errors are at	2.00 sigma
Reference Wellbore	DD	Database:	USA EDM 5000 Multi Users DB
Reference Design:	Plan #1	Offset TVD Reference:	Offset Datum

Offset Design NENW Sec28-T7S-R95W (PC-28) - BURIED CONDUCTOR 2 - DD - Conductor												Offset Site Error:	0.0 ft
Survey Program: 0-MWD												Offset Well Error:	0.0 ft
Reference		Offset		Semi Major Axis		Highside Toolface (°)	Offset Wellbore Centre		Distance		Total Uncertainty Axis	Separation Factor	Warning
Measured Depth (ft)	Vertical Depth (ft)	Measured Depth (ft)	Vertical Depth (ft)	Reference (ft)	Offset (ft)		+N/-S (ft)	+E/-W (ft)	Between Centres (ft)	Between Ellipses (ft)			
0.0	0.0	0.0	0.0	0.0	0.0	74.16	9.5	33.3	34.7				
100.0	100.0	50.0	50.0	0.1	0.0	74.16	9.5	33.3	60.8	60.7	0.19	328.830 SF	
200.0	200.0	50.0	50.0	0.3	0.0	74.16	9.5	33.3	154.0	153.6	0.36	428.191	
300.0	300.0	50.0	50.0	0.5	0.0	-106.95	9.5	33.3	252.6	252.0	0.54	466.108	
400.0	399.6	50.0	50.0	0.7	0.0	-76.39	9.5	33.3	352.1	351.3	0.76	463.137	
500.0	498.8	50.0	50.0	1.0	0.0	-45.87	9.5	33.3	451.7	450.8	0.97	466.010	

Anticollision Report

Company:	EnCana Oil & Gas (USA) Inc	Local Co-ordinate Reference:	Well Gardner 28-3DD
Project:	S. Piceance (Parachute)	TVD Reference:	KBE @ 6442.0ft (Nabors M13)
Reference Site:	NENW Sec28-T7S-R95W (PC-28)	MD Reference:	KBE @ 6442.0ft (Nabors M13)
Site Error:	0.0ft	North Reference:	True
Reference Well:	Gardner 28-3DD	Survey Calculation Method:	Minimum Curvature
Well Error:	0.0ft	Output errors are at	2.00 sigma
Reference Wellbore	DD	Database:	USA EDM 5000 Multi Users DB
Reference Design:	Plan #1	Offset TVD Reference:	Offset Datum

Offset Design NENW Sec28-T7S-R95W (PC-28) - BURIED CONDUCTOR 3 - DD - Conductor													Offset Site Error: 0.0 ft
Survey Program: 0-MWD													Offset Well Error: 0.0 ft
Reference		Offset		Semi Major Axis				Distance					
Measured Depth (ft)	Vertical Depth (ft)	Measured Depth (ft)	Vertical Depth (ft)	Reference (ft)	Offset (ft)	Highside Toolface (°)	Offset Wellbore Centre +N/-S (ft)	+E/-W (ft)	Between Centres (ft)	Between Ellipses (ft)	Total Uncertainty Axis	Separation Factor	Warning
0.0	0.0	0.0	0.0	0.0	0.0	74.08	14.2	49.7	51.7				
100.0	100.0	50.0	50.0	0.1	0.0	74.08	14.2	49.7	71.9	71.7	0.19	388.789 SF	
200.0	200.0	50.0	50.0	0.3	0.0	74.08	14.2	49.7	158.7	158.3	0.36	441.294	
300.0	300.0	50.0	50.0	0.5	0.0	-113.10	14.2	49.7	255.6	255.0	0.54	472.169	
400.0	399.6	50.0	50.0	0.7	0.0	-93.35	14.2	49.7	354.4	353.7	0.76	464.534	
500.0	498.8	50.0	50.0	1.0	0.0	-66.67	14.2	49.7	453.8	452.8	1.02	443.961	

Anticollision Report

Company:	EnCana Oil & Gas (USA) Inc	Local Co-ordinate Reference:	Well Gardner 28-3DD
Project:	S. Piceance (Parachute)	TVD Reference:	KBE @ 6442.0ft (Nabors M13)
Reference Site:	NENW Sec28-T7S-R95W (PC-28)	MD Reference:	KBE @ 6442.0ft (Nabors M13)
Site Error:	0.0ft	North Reference:	True
Reference Well:	Gardner 28-3DD	Survey Calculation Method:	Minimum Curvature
Well Error:	0.0ft	Output errors are at	2.00 sigma
Reference Wellbore	DD	Database:	USA EDM 5000 Multi Users DB
Reference Design:	Plan #1	Offset TVD Reference:	Offset Datum

Offset Design NENW Sec28-T7S-R95W (PC-28) - BURIED CONDUCTOR 4 - DD - Conductor												Offset Site Error:	0.0 ft
Survey Program: 0-MWD												Offset Well Error:	0.0 ft
Reference		Offset		Semi Major Axis		Distance							
Measured Depth (ft)	Vertical Depth (ft)	Measured Depth (ft)	Vertical Depth (ft)	Reference (ft)	Offset (ft)	Highside Toolface (°)	Offset Wellbore Centre +N/-S (ft)	+E/-W (ft)	Between Centres (ft)	Between Ellipses (ft)	Total Uncertainty Axis	Separation Factor	Warning
0.0	0.0	0.0	0.0	0.0	0.0	73.24	19.7	65.3	68.2				
100.0	100.0	50.0	50.0	0.1	0.0	73.24	19.7	65.3	84.5	84.3	0.19	456.914	
200.0	200.0	50.0	50.0	0.3	0.0	73.24	19.7	65.3	164.8	164.4	0.36	458.252	
300.0	300.0	50.0	50.0	0.5	0.0	-116.79	19.7	65.3	259.5	258.9	0.54	479.818	
400.0	399.6	50.0	50.0	0.7	0.0	-102.53	19.7	65.3	357.5	356.7	0.76	470.004	
500.0	498.8	50.0	50.0	1.0	0.0	-81.23	19.7	65.3	456.5	455.5	1.04	437.701 SF	

Anticollision Report

Company:	EnCana Oil & Gas (USA) Inc	Local Co-ordinate Reference:	Well Gardner 28-3DD
Project:	S. Piceance (Parachute)	TVD Reference:	KBE @ 6442.0ft (Nabors M13)
Reference Site:	NENW Sec28-T7S-R95W (PC-28)	MD Reference:	KBE @ 6442.0ft (Nabors M13)
Site Error:	0.0ft	North Reference:	True
Reference Well:	Gardner 28-3DD	Survey Calculation Method:	Minimum Curvature
Well Error:	0.0ft	Output errors are at	2.00 sigma
Reference Wellbore	DD	Database:	USA EDM 5000 Multi Users DB
Reference Design:	Plan #1	Offset TVD Reference:	Offset Datum

Offset Design NENW Sec28-T7S-R95W (PC-28) - Gardner 21-13 (PC-28-7-95) - DD - DD													Offset Site Error:	0.0 ft
Survey Program: 118-MWD, 7394-Gyro													Offset Well Error:	0.0 ft
Reference		Offset		Semi Major Axis		Highside Toolface (°)	Offset Wellbore Centre		Distance		Total Uncertainty Axis	Separation Factor	Warning	
Measured Depth (ft)	Vertical Depth (ft)	Measured Depth (ft)	Vertical Depth (ft)	Reference (ft)	Offset (ft)		+N/-S (ft)	+E/-W (ft)	Between Centres (ft)	Between Ellipses (ft)				
0.0	0.0	0.0	0.0	0.0	0.0	85.71	4.4	58.2	59.2					
100.0	100.0	89.8	89.8	0.1	0.1	85.85	4.2	58.4	58.6	58.3	0.27	213.350 CC, ES		
200.0	200.0	189.7	189.7	0.3	0.3	86.36	3.7	59.0	59.1	58.5	0.62	95.626		
300.0	300.0	290.0	290.0	0.5	0.5	-113.46	3.3	59.3	60.4	59.5	0.97	62.025		
400.0	399.6	390.4	390.4	0.7	0.7	-120.36	3.7	58.7	63.4	62.0	1.36	46.715		
500.0	498.8	489.8	489.7	1.0	0.8	-130.36	4.5	57.2	69.8	68.0	1.76	39.672		
600.0	597.1	589.5	589.4	1.4	1.0	-141.84	5.8	53.9	80.9	78.7	2.15	37.570 SF		
643.7	639.7	632.6	632.5	1.5	1.1	-146.83	6.6	51.7	87.4	85.1	2.31	37.848		
700.0	694.5	687.8	687.6	1.8	1.2	-152.80	7.7	48.3	96.9	94.4	2.50	38.732		
800.0	791.8	785.2	784.7	2.2	1.4	-161.02	9.6	41.8	115.4	112.5	2.83	40.751		
900.0	889.1	881.6	880.8	2.6	1.6	-167.11	12.0	35.0	135.8	132.6	3.16	42.935		
1,000.0	986.4	979.2	978.1	3.0	1.8	-172.05	14.9	27.1	157.3	153.8	3.51	44.775		
1,100.0	1,083.8	1,076.2	1,074.5	3.5	2.0	-176.30	18.2	17.8	179.5	175.6	3.89	46.172		
1,200.0	1,181.1	1,173.1	1,170.7	3.9	2.3	179.89	21.9	6.7	202.3	198.0	4.30	47.051		
1,300.0	1,278.4	1,267.7	1,264.3	4.3	2.6	176.19	26.7	-6.7	226.2	221.5	4.76	47.555		
1,400.0	1,375.7	1,361.6	1,356.8	4.8	2.9	172.76	32.6	-21.6	251.8	246.6	5.26	47.897		
1,500.0	1,473.0	1,456.8	1,450.3	5.2	3.2	169.61	39.2	-38.1	278.6	272.8	5.81	47.981		
1,600.0	1,570.3	1,551.5	1,543.0	5.7	3.5	166.60	46.1	-56.6	306.0	299.6	6.40	47.790		
1,700.0	1,667.6	1,645.3	1,634.0	6.1	3.9	163.63	53.2	-77.6	334.5	327.4	7.07	47.339		
1,800.0	1,765.0	1,735.1	1,720.8	6.5	4.4	160.85	60.6	-99.8	364.3	356.5	7.76	46.970		
1,900.0	1,862.3	1,824.3	1,806.2	7.0	4.8	158.14	69.1	-124.2	396.2	387.7	8.50	46.614		
2,000.0	1,959.6	1,912.8	1,890.0	7.4	5.3	155.43	77.8	-151.1	429.6	420.3	9.29	46.223		
2,100.0	2,056.9	1,996.9	1,968.8	7.8	5.9	152.89	87.0	-179.0	465.3	455.2	10.10	46.047		

Anticollision Report

Company:	EnCana Oil & Gas (USA) Inc	Local Co-ordinate Reference:	Well Gardner 28-3DD
Project:	S. Piceance (Parachute)	TVD Reference:	KBE @ 6442.0ft (Nabors M13)
Reference Site:	NENW Sec28-T7S-R95W (PC-28)	MD Reference:	KBE @ 6442.0ft (Nabors M13)
Site Error:	0.0ft	North Reference:	True
Reference Well:	Gardner 28-3DD	Survey Calculation Method:	Minimum Curvature
Well Error:	0.0ft	Output errors are at	2.00 sigma
Reference Wellbore	DD	Database:	USA EDM 5000 Multi Users DB
Reference Design:	Plan #1	Offset TVD Reference:	Offset Datum

Offset Design NENW Sec28-T7S-R95W (PC-28) - Gardner 21-14 (PC28) - DD - DD												Offset Site Error:	0.0 ft
Survey Program: 111-MWD, 1264-MWD												Offset Well Error:	0.0 ft
Reference		Offset		Semi Major Axis			Distance						Warning
Measured Depth (ft)	Vertical Depth (ft)	Measured Depth (ft)	Vertical Depth (ft)	Reference (ft)	Offset (ft)	Highside Toolface (°)	Offset Wellbore Centre +N/-S (ft)	+E/-W (ft)	Between Centres (ft)	Between Ellipses (ft)	Total Uncertainty Axis	Separation Factor	
0.0	0.0	0.0	0.0	0.0	0.0	74.40	26.6	95.2	98.9				
100.0	100.0	100.0	100.0	0.1	0.1	74.40	26.6	95.2	98.9	98.6	0.28	358.056	CC, ES
200.0	200.0	200.5	200.5	0.3	0.3	73.53	28.0	94.6	98.6	98.0	0.63	157.280	
216.9	216.9	217.4	217.4	0.3	0.3	-124.82	28.5	94.3	98.6	97.9	0.69	142.646	
300.0	300.0	300.1	299.9	0.5	0.5	-128.71	33.0	92.5	99.9	98.9	1.01	98.977	
400.0	399.6	398.9	398.3	0.7	0.8	-137.00	41.7	89.0	105.7	104.3	1.44	73.241	
500.0	498.8	495.2	493.6	1.0	1.1	-147.40	53.9	83.6	118.7	116.8	1.91	62.145	SF
600.0	597.1	587.9	584.9	1.4	1.4	-157.44	68.7	77.0	141.4	139.0	2.35	60.115	
643.7	639.7	627.9	624.1	1.5	1.5	-161.29	75.8	73.9	154.3	151.8	2.53	61.057	
700.0	694.5	679.0	674.2	1.8	1.7	-165.72	85.2	69.8	172.7	170.0	2.75	62.850	
800.0	791.8	769.4	762.5	2.2	2.1	-171.93	102.5	61.8	207.7	204.6	3.13	66.325	
900.0	889.1	863.0	854.0	2.6	2.4	-176.58	120.8	53.4	244.6	241.1	3.50	69.840	
1,000.0	986.4	954.2	943.4	3.0	2.8	-179.71	137.5	45.9	281.6	277.8	3.88	72.651	
1,100.0	1,083.8	1,044.0	1,031.1	3.5	3.2	177.81	154.6	38.2	319.8	315.6	4.26	75.116	
1,200.0	1,181.1	1,134.3	1,119.2	3.9	3.6	175.70	172.5	29.9	358.9	354.3	4.65	77.204	
1,300.0	1,278.4	1,225.2	1,207.9	4.3	3.9	173.91	190.7	21.0	398.5	393.5	5.05	78.891	
1,400.0	1,375.7	1,315.8	1,296.2	4.8	4.3	172.42	209.0	12.0	438.5	433.0	5.45	80.403	
1,500.0	1,473.0	1,405.2	1,383.3	5.2	4.7	171.23	227.1	3.5	478.8	472.9	5.86	81.759	

Anticollision Report

Company:	EnCana Oil & Gas (USA) Inc	Local Co-ordinate Reference:	Well Gardner 28-3DD
Project:	S. Piceance (Parachute)	TVD Reference:	KBE @ 6442.0ft (Nabors M13)
Reference Site:	NENW Sec28-T7S-R95W (PC-28)	MD Reference:	KBE @ 6442.0ft (Nabors M13)
Site Error:	0.0ft	North Reference:	True
Reference Well:	Gardner 28-3DD	Survey Calculation Method:	Minimum Curvature
Well Error:	0.0ft	Output errors are at	2.00 sigma
Reference Wellbore	DD	Database:	USA EDM 5000 Multi Users DB
Reference Design:	Plan #1	Offset TVD Reference:	Offset Datum

Offset Design NENW Sec28-T7S-R95W (PC-28) - Gardner 21-14C - DD - Plan #1													Offset Site Error:	0.0 ft
Survey Program: 0-MWD													Offset Well Error:	0.0 ft
Reference		Offset		Semi Major Axis			Distance				Total		Warning	
Measured Depth (ft)	Vertical Depth (ft)	Measured Depth (ft)	Vertical Depth (ft)	Reference (ft)	Offset (ft)	Highside Toolface (°)	Offset Wellbore Centre +N/-S (ft)	+E/-W (ft)	Between Centres (ft)	Between Ellipses (ft)	Uncertainty Axis	Separation Factor		
0.0	0.0	0.0	0.0	0.0	0.0	66.85	22.9	53.7	58.4					
100.0	100.0	100.0	100.0	0.1	0.1	66.85	22.9	53.7	58.4	58.1	0.27	214.412		
200.0	200.0	200.0	200.0	0.3	0.3	66.85	22.9	53.7	58.4	57.8	0.62	93.956 CC, ES		
300.0	300.0	300.9	300.9	0.5	0.5	-133.48	23.3	53.1	59.7	58.7	0.98	61.155		
400.0	399.6	402.2	402.0	0.7	0.7	-142.62	25.7	48.3	62.7	61.3	1.36	46.175		
500.0	498.8	501.8	501.0	1.0	0.9	-156.66	30.5	38.9	70.2	68.4	1.77	39.587		
600.0	597.1	598.9	597.1	1.4	1.2	-170.69	36.9	26.3	86.0	83.8	2.19	39.237 SF		
643.7	639.7	640.8	638.6	1.5	1.3	-175.41	39.7	20.7	95.8	93.4	2.37	40.362		
700.0	694.5	694.7	691.8	1.8	1.5	179.73	43.4	13.5	109.7	107.1	2.62	41.931		
800.0	791.8	790.4	786.5	2.2	1.8	173.60	49.8	0.8	135.9	132.8	3.07	44.288		
900.0	889.1	886.1	881.1	2.6	2.1	169.45	56.3	-11.9	163.0	159.4	3.54	46.096		
1,000.0	986.4	981.7	975.7	3.0	2.4	166.48	62.8	-24.6	190.7	186.6	4.02	47.471		
1,100.0	1,083.8	1,077.4	1,070.3	3.5	2.7	164.27	69.3	-37.4	218.7	214.2	4.51	48.533		
1,200.0	1,181.1	1,173.1	1,164.9	3.9	2.9	162.56	75.7	-50.1	247.0	242.0	5.00	49.371		
1,300.0	1,278.4	1,268.8	1,259.5	4.3	3.2	161.20	82.2	-62.8	275.4	269.9	5.50	50.046		
1,400.0	1,375.7	1,364.5	1,354.1	4.8	3.5	160.09	88.7	-75.5	304.0	298.0	6.01	50.600		
1,500.0	1,473.0	1,460.2	1,448.8	5.2	3.8	159.17	95.2	-88.3	332.6	326.1	6.51	51.063		
1,600.0	1,570.3	1,555.9	1,543.4	5.7	4.1	158.40	101.6	-101.0	361.3	354.3	7.02	51.454		
1,700.0	1,667.6	1,651.5	1,638.0	6.1	4.4	157.74	108.1	-113.7	390.1	382.6	7.53	51.789		
1,800.0	1,765.0	1,747.2	1,732.6	6.5	4.7	157.18	114.6	-126.4	418.9	410.8	8.04	52.079		
1,900.0	1,862.3	1,842.9	1,827.2	7.0	5.0	156.68	121.1	-139.2	447.7	439.2	8.56	52.333		
2,000.0	1,959.6	1,938.6	1,921.8	7.4	5.3	156.25	127.5	-151.9	476.6	467.5	9.07	52.557		

Anticollision Report

Company:	EnCana Oil & Gas (USA) Inc	Local Co-ordinate Reference:	Well Gardner 28-3DD
Project:	S. Piceance (Parachute)	TVD Reference:	KBE @ 6442.0ft (Nabors M13)
Reference Site:	NENW Sec28-T7S-R95W (PC-28)	MD Reference:	KBE @ 6442.0ft (Nabors M13)
Site Error:	0.0ft	North Reference:	True
Reference Well:	Gardner 28-3DD	Survey Calculation Method:	Minimum Curvature
Well Error:	0.0ft	Output errors are at	2.00 sigma
Reference Wellbore	DD	Database:	USA EDM 5000 Multi Users DB
Reference Design:	Plan #1	Offset TVD Reference:	Offset Datum

Offset Design													NENW Sec28-T7S-R95W (PC-28) - Gardner 28-3D (PC28) (Surveys from 21-14) - DD - DD		Offset Site Error:		0.0 ft
Survey Program: 111-MWD													Offset Well Error:		0.0 ft		
Reference		Offset		Semi Major Axis			Distance							Warning			
Measured Depth	Vertical Depth	Measured Depth	Vertical Depth	Reference	Offset	Highside Toolface	Offset Wellbore Centre	Between Centres	Between Ellipses	Total Uncertainty Axis	Separation Factor						
(ft)	(ft)	(ft)	(ft)	(ft)	(ft)	(°)	+N/-S (ft)	+E/-W (ft)	(ft)	(ft)							
0.0	0.0	0.0	0.0	0.0	0.0	91.73	-0.7	24.6	24.6								
100.0	100.0	99.9	99.9	0.1	0.1	91.91	-0.8	24.8	24.8	24.5	0.28	89.901					
200.0	200.0	200.1	200.1	0.3	0.3	89.85	0.1	24.8	24.8	24.2	0.62	39.935					
235.5	235.5	235.6	235.6	0.4	0.4	-111.41	1.2	24.6	24.8	24.0	0.75	33.006 ES					
300.0	300.0	300.4	300.3	0.5	0.5	-123.49	4.3	23.5	25.2	24.2	0.99	25.429 SF					
400.0	399.6	312.0	311.9	0.7	0.5	-122.38	4.9	23.1	92.8	91.6	1.22	76.087					
500.0	498.8	312.0	311.9	1.0	0.5	-105.42	4.9	23.1	191.3	189.8	1.51	126.987					
600.0	597.1	312.0	311.9	1.4	0.5	-71.26	4.9	23.1	290.9	289.1	1.84	158.364					
643.7	639.7	312.0	311.9	1.5	0.5	-55.46	4.9	23.1	334.5	332.6	1.91	175.218					
700.0	694.5	312.0	311.9	1.8	0.5	-55.46	4.9	23.1	390.7	388.6	2.11	185.490					
800.0	791.8	312.0	311.9	2.2	0.5	-55.46	4.9	23.1	490.5	488.0	2.46	199.111					

Anticollision Report

Company:	EnCana Oil & Gas (USA) Inc	Local Co-ordinate Reference:	Well Gardner 28-3DD
Project:	S. Piceance (Parachute)	TVD Reference:	KBE @ 6442.0ft (Nabors M13)
Reference Site:	NENW Sec28-T7S-R95W (PC-28)	MD Reference:	KBE @ 6442.0ft (Nabors M13)
Site Error:	0.0ft	North Reference:	True
Reference Well:	Gardner 28-3DD	Survey Calculation Method:	Minimum Curvature
Well Error:	0.0ft	Output errors are at	2.00 sigma
Reference Wellbore	DD	Database:	USA EDM 5000 Multi Users DB
Reference Design:	Plan #1	Offset TVD Reference:	Offset Datum

Offset Design NENW Sec28-T7S-R95W (PC-28) - Gardner 28-4A - DD - Plan #1													Offset Site Error:	0.0 ft
Survey Program: 0-MWD													Offset Well Error:	0.0 ft
Reference		Offset		Semi Major Axis			Distance				Total	Separation	Warning	
Measured Depth (ft)	Vertical Depth (ft)	Measured Depth (ft)	Vertical Depth (ft)	Reference (ft)	Offset (ft)	Highside Toolface (°)	Offset Wellbore Centre +N/-S (ft)	+E/-W (ft)	Between Centres (ft)	Between Ellipses (ft)	Uncertainty Axis	Factor		
0.0	0.0	0.0	0.0	0.0	0.0	63.86	18.6	37.9	42.2					
100.0	100.0	100.0	100.0	0.1	0.1	63.86	18.6	37.9	42.2	41.9	0.27	154.882		
200.0	200.0	200.0	200.0	0.3	0.3	63.86	18.6	37.9	42.2	41.5	0.62	67.870 CC, ES		
300.0	300.0	301.0	301.0	0.5	0.5	-136.87	18.5	37.2	43.4	42.4	0.98	44.482		
400.0	399.6	402.9	402.7	0.7	0.7	-146.46	17.8	31.8	44.8	43.5	1.35	33.307		
500.0	498.8	503.9	503.2	1.0	0.9	-161.88	16.5	21.1	48.3	46.6	1.73	27.875		
600.0	597.1	603.7	601.7	1.4	1.3	-179.33	14.6	5.4	57.5	55.3	2.19	26.194		
643.7	639.7	646.9	644.0	1.5	1.4	173.66	13.6	-2.9	63.8	61.4	2.45	26.051		
700.0	694.5	702.0	697.8	1.8	1.6	165.59	12.1	-15.0	73.5	70.6	2.82	26.022		
800.0	791.8	798.8	791.3	2.2	2.1	153.38	9.0	-39.9	93.0	89.4	3.64	25.531		
900.0	889.1	894.3	882.2	2.6	2.7	143.42	5.5	-68.7	116.0	111.4	4.56	25.437 SF		
1,000.0	986.4	989.7	972.9	3.0	3.2	136.43	1.9	-98.3	141.5	136.0	5.47	25.882		
1,100.0	1,083.8	1,085.2	1,063.6	3.5	3.8	131.59	-1.8	-127.9	168.4	162.1	6.35	26.514		
1,200.0	1,181.1	1,180.7	1,154.3	3.9	4.3	128.08	-5.4	-157.6	196.2	189.0	7.22	27.169		
1,300.0	1,278.4	1,276.1	1,245.0	4.3	4.9	125.44	-9.0	-187.2	224.5	216.4	8.08	27.788		
1,400.0	1,375.7	1,371.6	1,335.6	4.8	5.4	123.39	-12.7	-216.8	253.1	244.1	8.93	28.354		
1,500.0	1,473.0	1,467.1	1,426.3	5.2	6.0	121.76	-16.3	-246.5	281.9	272.1	9.77	28.862		
1,600.0	1,570.3	1,562.6	1,517.0	5.7	6.6	120.43	-19.9	-276.1	310.9	300.3	10.61	29.318		
1,700.0	1,667.6	1,658.0	1,607.7	6.1	7.1	119.32	-23.6	-305.7	340.1	328.6	11.44	29.726		
1,800.0	1,765.0	1,753.5	1,698.4	6.5	7.7	118.39	-27.2	-335.4	369.3	357.1	12.27	30.093		
1,900.0	1,862.3	1,849.0	1,789.0	7.0	8.3	117.60	-30.8	-365.0	398.6	385.5	13.10	30.423		
2,000.0	1,959.6	1,944.4	1,879.7	7.4	8.8	116.91	-34.5	-394.6	428.0	414.1	13.93	30.720		
2,100.0	2,056.9	2,039.9	1,970.4	7.8	9.4	116.31	-38.1	-424.3	457.5	442.7	14.76	30.991		
2,200.0	2,154.2	2,135.4	2,061.1	8.3	10.0	115.79	-41.7	-453.9	486.9	471.3	15.59	31.236		

Anticollision Report

Company:	EnCana Oil & Gas (USA) Inc	Local Co-ordinate Reference:	Well Gardner 28-3DD
Project:	S. Piceance (Parachute)	TVD Reference:	KBE @ 6442.0ft (Nabors M13)
Reference Site:	NENW Sec28-T7S-R95W (PC-28)	MD Reference:	KBE @ 6442.0ft (Nabors M13)
Site Error:	0.0ft	North Reference:	True
Reference Well:	Gardner 28-3DD	Survey Calculation Method:	Minimum Curvature
Well Error:	0.0ft	Output errors are at	2.00 sigma
Reference Wellbore	DD	Database:	USA EDM 5000 Multi Users DB
Reference Design:	Plan #1	Offset TVD Reference:	Offset Datum

Offset Design NENW Sec28-T7S-R95W (PC-28) - Gardner Federal 21-15 (PC-28-7-95) - DD - DD													Offset Site Error:	0.0 ft
Survey Program: 118-MWD, 7271-Gyro													Offset Well Error:	0.0 ft
Reference		Offset		Semi Major Axis			Distance							
Measured Depth (ft)	Vertical Depth (ft)	Measured Depth (ft)	Vertical Depth (ft)	Reference (ft)	Offset (ft)	Highside Toolface (°)	Offset Wellbore +N/-S (ft)	Centre +E/-W (ft)	Between Centres (ft)	Between Ellipses (ft)	Total Uncertainty Axis	Separation Factor	Warning	
0.0	0.0	0.0	0.0	0.0	0.0	84.14	8.0	78.0	79.0					
100.0	100.0	90.2	90.2	0.1	0.1	84.17	7.9	77.9	78.3	78.0	0.27	284.757		
199.2	199.2	189.2	189.2	0.3	0.3	84.21	7.9	77.7	78.1	77.5	0.61	126.973	CC	
200.0	200.0	190.0	190.0	0.3	0.3	84.21	7.9	77.7	78.1	77.5	0.62	126.380	ES	
300.0	300.0	290.1	290.1	0.5	0.5	-115.44	7.9	77.6	79.1	78.2	0.97	81.249		
400.0	399.6	389.9	389.9	0.7	0.7	-120.22	7.7	77.4	82.5	81.2	1.36	60.854		
500.0	498.8	487.4	487.4	1.0	0.8	-127.12	8.0	77.9	90.4	88.6	1.76	51.213		
600.0	597.1	582.3	582.3	1.4	1.0	-134.47	9.1	80.6	105.5	103.3	2.18	48.362	SF	
643.7	639.7	623.6	623.5	1.5	1.1	-137.53	9.9	82.5	114.7	112.3	2.36	48.603		
700.0	694.5	676.7	676.5	1.8	1.2	-141.21	11.3	85.4	128.0	125.4	2.58	49.573		
800.0	791.8	772.4	772.0	2.2	1.4	-146.22	14.0	91.0	153.0	150.0	2.96	51.628		
900.0	889.1	867.6	867.0	2.6	1.5	-149.75	16.8	96.9	179.2	175.8	3.34	53.709		
1,000.0	986.4	961.1	960.2	3.0	1.7	-151.94	18.9	104.0	206.3	202.6	3.71	55.556		
1,100.0	1,083.8	1,049.3	1,047.9	3.5	2.0	-153.46	22.2	112.5	236.0	232.0	4.08	57.792		
1,200.0	1,181.1	1,135.5	1,133.3	3.9	2.2	-154.70	27.7	122.4	269.0	264.6	4.45	60.442		
1,300.0	1,278.4	1,224.0	1,220.7	4.3	2.4	-155.50	34.4	134.9	304.5	299.6	4.83	63.002		
1,400.0	1,375.7	1,310.9	1,306.2	4.8	2.7	-155.90	41.1	149.0	341.4	336.2	5.23	65.346		
1,500.0	1,473.0	1,397.1	1,390.7	5.2	3.0	-156.11	48.6	164.5	380.2	374.5	5.63	67.578		
1,600.0	1,570.3	1,481.5	1,473.1	5.7	3.4	-156.21	56.6	180.8	420.4	414.3	6.03	69.721		
1,700.0	1,667.6	1,561.6	1,550.9	6.1	3.7	-156.22	65.0	197.8	462.4	456.0	6.43	71.863		

Anticollision Report

Company:	EnCana Oil & Gas (USA) Inc	Local Co-ordinate Reference:	Well Gardner 28-3DD
Project:	S. Piceance (Parachute)	TVD Reference:	KBE @ 6442.0ft (Nabors M13)
Reference Site:	NENW Sec28-T7S-R95W (PC-28)	MD Reference:	KBE @ 6442.0ft (Nabors M13)
Site Error:	0.0ft	North Reference:	True
Reference Well:	Gardner 28-3DD	Survey Calculation Method:	Minimum Curvature
Well Error:	0.0ft	Output errors are at	2.00 sigma
Reference Wellbore	DD	Database:	USA EDM 5000 Multi Users DB
Reference Design:	Plan #1	Offset TVD Reference:	Offset Datum

Offset Design NENW Sec28-T7S-R95W (PC-28) - Gardner Federal 28-1 (PC28) - DD - DD													Offset Site Error:	0.0 ft
Survey Program: 111-MWD													Offset Well Error:	0.0 ft
Reference		Offset		Semi Major Axis		Highside Toolface (°)	Offset Wellbore Centre		Distance		Total Uncertainty Axis	Separation Factor	Warning	
Measured Depth (ft)	Vertical Depth (ft)	Measured Depth (ft)	Vertical Depth (ft)	Reference (ft)	Offset (ft)		+N/-S (ft)	+E/-W (ft)	Between Centres (ft)	Between Ellipses (ft)				
0.0	0.0	0.0	0.0	0.0	0.0	79.44	16.7	89.8	91.4					
100.0	100.0	100.4	100.4	0.1	0.1	79.37	16.8	89.6	91.2	90.9	0.28	329.535		
200.0	200.0	200.8	200.8	0.3	0.3	79.34	16.7	88.9	90.4	89.8	0.62	145.192		
221.4	221.4	221.8	221.8	0.3	0.3	-118.64	16.6	88.7	90.3	89.6	0.70	129.371	CC, ES	
300.0	300.0	298.8	298.8	0.5	0.5	-119.41	15.9	89.1	91.8	90.8	0.97	94.156		
400.0	399.6	395.0	394.9	0.7	0.7	-121.92	14.5	92.4	98.8	97.5	1.35	73.118		
500.0	498.8	489.3	488.9	1.0	0.8	-125.47	13.3	99.4	112.9	111.2	1.77	63.914		
600.0	597.1	581.4	580.4	1.4	1.1	-128.84	11.8	110.4	134.6	132.4	2.23	60.373		
643.7	639.7	620.4	618.9	1.5	1.2	-130.03	11.0	116.4	146.6	144.1	2.45	59.936	SF	
700.0	694.5	669.9	667.5	1.8	1.4	-131.49	9.6	125.4	163.8	161.0	2.73	60.008		
800.0	791.8	758.0	753.5	2.2	1.7	-133.02	7.4	144.7	197.7	194.5	3.26	60.697		
900.0	889.1	840.4	832.9	2.6	2.1	-133.56	5.1	166.5	235.5	231.7	3.81	61.781		
1,000.0	986.4	923.0	911.5	3.0	2.6	-133.39	2.1	191.8	276.6	272.2	4.41	62.724		
1,100.0	1,083.8	1,001.9	985.2	3.5	3.2	-132.75	-1.9	219.4	320.7	315.7	5.04	63.680		
1,200.0	1,181.1	1,078.9	1,055.9	3.9	3.7	-131.86	-6.6	249.6	368.1	362.4	5.68	64.812		
1,300.0	1,278.4	1,157.2	1,126.9	4.3	4.4	-130.98	-11.2	282.4	418.0	411.7	6.34	65.980		
1,400.0	1,375.7	1,166.0	1,134.8	4.8	4.4	-130.89	-11.7	286.2	475.0	468.3	6.72	70.708		

Anticollision Report

Company:	EnCana Oil & Gas (USA) Inc	Local Co-ordinate Reference:	Well Gardner 28-3DD
Project:	S. Piceance (Parachute)	TVD Reference:	KBE @ 6442.0ft (Nabors M13)
Reference Site:	NENW Sec28-T7S-R95W (PC-28)	MD Reference:	KBE @ 6442.0ft (Nabors M13)
Site Error:	0.0ft	North Reference:	True
Reference Well:	Gardner 28-3DD	Survey Calculation Method:	Minimum Curvature
Well Error:	0.0ft	Output errors are at	2.00 sigma
Reference Wellbore	DD	Database:	USA EDM 5000 Multi Users DB
Reference Design:	Plan #1	Offset TVD Reference:	Offset Datum

Offset Design													Offset Site Error:	0.0 ft
NENW Sec28-T7S-R95W (PC-28) - Gardner Federal 28-1C (was Gardner 21-14C PC28) - DD - DD													Offset Well Error:	0.0 ft
Survey Program: 51-Gyro, 204-MWD														
Reference		Offset		Semi Major Axis		Highside Toolface (°)	Offset Wellbore Centre		Distance		Total Uncertainty Axis	Separation Factor	Warning	
Measured Depth (ft)	Vertical Depth (ft)	Measured Depth (ft)	Vertical Depth (ft)	Reference (ft)	Offset (ft)		+N/-S (ft)	+E/-W (ft)	Between Centres (ft)	Between Ellipses (ft)				
0.0	0.0	0.0	0.0	0.0	0.0	74.18	22.9	80.8	84.0					
100.0	100.0	99.0	99.0	0.1	0.1	74.00	23.3	81.1	84.4	84.2	0.20	415.072		
200.0	200.0	199.5	199.5	0.3	0.2	73.62	24.1	82.1	85.6	85.1	0.49	175.129		
300.0	300.0	300.3	300.3	0.5	0.4	-125.82	24.3	82.0	87.0	86.2	0.84	103.041		
400.0	399.6	400.3	400.2	0.7	0.5	-129.72	24.2	81.6	91.5	90.2	1.22	74.978		
500.0	498.8	497.6	497.6	1.0	0.7	-135.37	24.5	81.5	100.4	98.7	1.61	62.204		
600.0	597.1	592.3	592.2	1.4	0.9	-141.86	27.0	83.0	116.9	114.9	2.01	58.167 SF		
643.7	639.7	632.3	632.2	1.5	0.9	-144.52	28.7	84.2	126.7	124.6	2.18	58.269		
700.0	694.5	684.3	684.0	1.8	1.0	-147.80	31.4	86.4	141.3	138.9	2.38	59.280		
800.0	791.8	775.9	775.3	2.2	1.2	-151.92	36.9	92.1	169.8	167.0	2.74	61.869		
900.0	889.1	864.1	863.0	2.6	1.4	-154.77	43.8	99.2	201.4	198.3	3.09	65.150		
1,000.0	986.4	954.9	952.9	3.0	1.7	-156.82	52.4	108.4	235.8	232.4	3.44	68.531		
1,100.0	1,083.8	1,046.2	1,043.2	3.5	1.9	-158.07	60.9	119.2	271.3	267.5	3.80	71.435		
1,200.0	1,181.1	1,139.4	1,135.2	3.9	2.2	-158.60	68.4	132.1	307.2	303.0	4.18	73.577		
1,300.0	1,278.4	1,170.0	1,165.3	4.3	2.3	-158.62	70.4	136.9	348.8	344.3	4.46	78.252		
1,400.0	1,375.7	1,170.0	1,165.3	4.8	2.3	-158.62	70.4	136.9	409.9	405.2	4.68	87.511		
1,500.0	1,473.0	1,170.0	1,165.3	5.2	2.3	-158.62	70.4	136.9	484.1	479.2	4.91	98.581		

Anticollision Report

Company:	EnCana Oil & Gas (USA) Inc	Local Co-ordinate Reference:	Well Gardner 28-3DD
Project:	S. Piceance (Parachute)	TVD Reference:	KBE @ 6442.0ft (Nabors M13)
Reference Site:	NENW Sec28-T7S-R95W (PC-28)	MD Reference:	KBE @ 6442.0ft (Nabors M13)
Site Error:	0.0ft	North Reference:	True
Reference Well:	Gardner 28-3DD	Survey Calculation Method:	Minimum Curvature
Well Error:	0.0ft	Output errors are at	2.00 sigma
Reference Wellbore	DD	Database:	USA EDM 5000 Multi Users DB
Reference Design:	Plan #1	Offset TVD Reference:	Offset Datum

Offset Design NENW Sec28-T7S-R95W (PC-28) - Gardner Federal 28-2A (PC 28) - DD - DD													Offset Site Error:	0.0 ft
Survey Program: 60-Gyro, 1130-MWD													Offset Well Error:	0.0 ft
Reference		Offset		Semi Major Axis		Highside Toolface (°)	Offset Wellbore Centre		Distance		Total Uncertainty Axis	Separation Factor	Warning	
Measured Depth (ft)	Vertical Depth (ft)	Measured Depth (ft)	Vertical Depth (ft)	Reference (ft)	Offset (ft)		+N/-S (ft)	+E/-W (ft)	Between Centres (ft)	Between Ellipses (ft)				
0.0	0.0	0.0	0.0	0.0	0.0	68.15	7.2	18.1	19.5					
100.0	100.0	100.0	100.0	0.1	0.1	68.10	7.3	18.1	19.5	19.3	0.20	95.410 ES		
200.0	200.0	199.5	199.5	0.3	0.2	69.19	7.2	18.9	20.3	19.8	0.47	43.508		
300.0	300.0	298.8	298.7	0.5	0.2	-128.98	6.7	22.8	25.3	24.6	0.73	34.560 SF		
400.0	399.6	397.5	397.2	0.7	0.3	-132.31	5.2	29.6	36.2	35.2	1.02	35.358		
500.0	498.8	494.4	493.5	1.0	0.5	-135.34	2.9	39.6	53.5	52.1	1.35	39.599		
600.0	597.1	588.5	586.5	1.4	0.6	-137.17	0.2	53.7	78.4	76.6	1.72	45.464		
643.7	639.7	628.6	625.9	1.5	0.7	-137.75	-0.9	61.1	91.6	89.7	1.90	48.293		
700.0	694.5	679.7	675.9	1.8	0.8	-138.49	-2.2	71.5	110.2	108.1	2.13	51.816		
800.0	791.8	768.9	762.6	2.2	0.9	-138.71	-4.6	92.4	145.8	143.2	2.55	57.118		
900.0	889.1	859.4	850.0	2.6	1.2	-138.63	-6.2	115.9	183.7	180.7	2.99	61.395		
1,000.0	986.4	953.6	940.8	3.0	1.4	-138.51	-7.9	140.7	222.0	218.5	3.44	64.459		
1,100.0	1,083.8	1,046.7	1,030.9	3.5	1.6	-138.51	-9.9	164.2	259.2	255.3	3.89	66.557		
1,200.0	1,181.1	1,130.0	1,111.3	3.9	1.9	-138.43	-11.8	185.7	296.9	292.5	4.41	67.352		
1,300.0	1,278.4	1,130.0	1,111.3	4.3	1.9	-138.43	-11.8	185.7	349.5	344.7	4.72	73.972		
1,400.0	1,375.7	1,130.0	1,111.3	4.8	1.9	-138.43	-11.8	185.7	419.6	414.6	5.04	83.248		

Anticollision Report

Company:	EnCana Oil & Gas (USA) Inc	Local Co-ordinate Reference:	Well Gardner 28-3DD
Project:	S. Piceance (Parachute)	TVD Reference:	KBE @ 6442.0ft (Nabors M13)
Reference Site:	NENW Sec28-T7S-R95W (PC-28)	MD Reference:	KBE @ 6442.0ft (Nabors M13)
Site Error:	0.0ft	North Reference:	True
Reference Well:	Gardner 28-3DD	Survey Calculation Method:	Minimum Curvature
Well Error:	0.0ft	Output errors are at	2.00 sigma
Reference Wellbore	DD	Database:	USA EDM 5000 Multi Users DB
Reference Design:	Plan #1	Offset TVD Reference:	Offset Datum

Offset Design NENW Sec28-T7S-R95W (PC-28) - Gardner Federal 28-2B (PC28) - DD - Plan #6													Offset Site Error:	0.0 ft
Survey Program:		0-MWD											Offset Well Error:	0.0 ft
Reference		Offset		Semi Major Axis			Distance				Total Uncertainty Axis	Separation Factor	Warning	
Measured Depth (ft)	Vertical Depth (ft)	Measured Depth (ft)	Vertical Depth (ft)	Reference (ft)	Offset (ft)	Highside Toolface (°)	Offset Wellbore Centre +N/-S (ft)	+E/-W (ft)	Between Centres (ft)	Between Ellipses (ft)				
0.0	0.0	0.0	0.0	0.0	0.0	85.35	3.3	40.1	40.3					
100.0	100.0	100.0	100.0	0.1	0.1	85.35	3.3	40.1	40.3	40.0	0.27	147.834		
200.0	200.0	200.0	200.0	0.3	0.3	85.35	3.3	40.1	40.3	39.6	0.62	64.781 CC, ES		
300.0	300.0	298.3	298.2	0.5	0.5	-113.63	1.9	42.2	43.3	42.3	0.98	44.298		
400.0	399.6	395.9	395.6	0.7	0.7	-115.95	-2.2	48.6	52.5	51.1	1.38	38.095		
500.0	498.8	492.5	491.3	1.0	1.0	-118.34	-8.8	58.9	67.9	66.1	1.86	36.592 SF		
600.0	597.1	587.3	584.7	1.4	1.3	-120.16	-17.9	73.0	89.5	87.0	2.43	36.799		
643.7	639.7	628.1	624.5	1.5	1.5	-120.75	-22.6	80.3	100.8	98.1	2.71	37.193		
700.0	694.5	680.1	675.1	1.8	1.7	-121.43	-29.2	90.6	116.6	113.5	3.08	37.820		
800.0	791.8	775.6	767.5	2.2	2.2	-121.84	-42.2	110.8	145.6	141.9	3.77	38.612		
900.0	889.1	871.3	860.1	2.6	2.6	-122.10	-55.2	131.0	174.7	170.2	4.48	39.043		
1,000.0	986.4	967.0	952.7	3.0	3.0	-122.29	-68.2	151.2	203.8	198.6	5.19	39.296		
1,100.0	1,083.8	1,062.6	1,045.3	3.5	3.5	-122.44	-81.2	171.4	232.9	227.0	5.90	39.455		
1,200.0	1,181.1	1,158.3	1,137.9	3.9	4.0	-122.55	-94.2	191.6	262.0	255.4	6.62	39.558		
1,300.0	1,278.4	1,254.0	1,230.6	4.3	4.4	-122.64	-107.2	211.8	291.1	283.7	7.35	39.628		
1,400.0	1,375.7	1,349.7	1,323.2	4.8	4.9	-122.71	-120.2	232.0	320.2	312.1	8.07	39.677		
1,500.0	1,473.0	1,445.3	1,415.8	5.2	5.3	-122.77	-133.2	252.2	349.3	340.5	8.80	39.712		
1,600.0	1,570.3	1,541.0	1,508.4	5.7	5.8	-122.82	-146.2	272.4	378.4	368.9	9.52	39.737		
1,700.0	1,667.6	1,636.7	1,601.0	6.1	6.2	-122.87	-159.2	292.6	407.5	397.2	10.25	39.756		
1,800.0	1,765.0	1,732.4	1,693.6	6.5	6.7	-122.91	-172.2	312.8	436.6	425.6	10.98	39.770		
1,900.0	1,862.3	1,828.0	1,786.2	7.0	7.1	-122.94	-185.3	333.0	465.7	454.0	11.71	39.780		
2,000.0	1,959.6	1,923.7	1,878.8	7.4	7.6	-122.97	-198.3	353.2	494.8	482.3	12.44	39.788		

Anticollision Report

Company:	EnCana Oil & Gas (USA) Inc	Local Co-ordinate Reference:	Well Gardner 28-3DD
Project:	S. Piceance (Parachute)	TVD Reference:	KBE @ 6442.0ft (Nabors M13)
Reference Site:	NENW Sec28-T7S-R95W (PC-28)	MD Reference:	KBE @ 6442.0ft (Nabors M13)
Site Error:	0.0ft	North Reference:	True
Reference Well:	Gardner 28-3DD	Survey Calculation Method:	Minimum Curvature
Well Error:	0.0ft	Output errors are at	2.00 sigma
Reference Wellbore	DD	Database:	USA EDM 5000 Multi Users DB
Reference Design:	Plan #1	Offset TVD Reference:	Offset Datum

Offset Design NENW Sec28-T7S-R95W (PC-28) - Gardner Federal 28-2D - DD - Plan #1													Offset Site Error:	0.0 ft
Survey Program: 0-MWD													Offset Well Error:	0.0 ft
Reference		Offset		Semi Major Axis		Highside Toolface (°)	Offset Wellbore Centre		Distance		Total Uncertainty Axis	Separation Factor	Warning	
Measured Depth (ft)	Vertical Depth (ft)	Measured Depth (ft)	Vertical Depth (ft)	Reference (ft)	Offset (ft)		+N/-S (ft)	+E/-W (ft)	Between Centres (ft)	Between Ellipses (ft)				
0.0	0.0	0.0	0.0	0.0	0.0	56.86	14.2	21.8	26.0					
100.0	100.0	100.0	100.0	0.1	0.1	56.86	14.2	21.8	26.0	25.7	0.27	95.425		
200.0	200.0	200.0	200.0	0.3	0.3	56.86	14.2	21.8	26.0	25.4	0.62	41.815 CC, ES		
300.0	300.0	299.8	299.8	0.5	0.5	-143.10	13.7	22.2	28.2	27.2	0.97	28.943		
400.0	399.6	399.3	399.1	0.7	0.7	-142.28	10.1	25.9	35.3	34.0	1.35	26.067 SF		
500.0	498.8	498.1	497.4	1.0	0.9	-139.38	2.8	33.1	47.6	45.8	1.81	26.265		
600.0	597.1	595.8	593.9	1.4	1.2	-136.21	-7.9	43.8	65.0	62.6	2.38	27.350		
643.7	639.7	638.0	635.4	1.5	1.4	-134.93	-13.6	49.5	74.3	71.6	2.67	27.860		
700.0	694.5	692.1	688.2	1.8	1.6	-133.31	-21.9	57.7	87.1	84.0	3.05	28.514		
800.0	791.8	787.2	780.1	2.2	2.1	-129.53	-39.0	74.7	111.3	107.5	3.83	29.082		
900.0	889.1	880.6	869.2	2.6	2.6	-125.31	-58.9	94.5	138.0	133.3	4.67	29.514		
1,000.0	986.4	974.4	957.4	3.0	3.2	-121.22	-81.5	117.0	167.0	161.5	5.54	30.154		
1,100.0	1,083.8	1,069.4	1,046.6	3.5	3.7	-118.19	-104.7	140.0	196.9	190.5	6.40	30.752		
1,200.0	1,181.1	1,164.3	1,135.8	3.9	4.3	-115.96	-127.8	163.1	227.1	219.8	7.26	31.295		
1,300.0	1,278.4	1,259.3	1,225.0	4.3	4.9	-114.25	-151.0	186.1	257.5	249.4	8.11	31.774		
1,400.0	1,375.7	1,354.3	1,314.2	4.8	5.5	-112.90	-174.2	209.2	288.2	279.2	8.95	32.195		
1,500.0	1,473.0	1,449.3	1,403.4	5.2	6.1	-111.81	-197.3	232.2	318.9	309.1	9.79	32.565		
1,600.0	1,570.3	1,544.3	1,492.6	5.7	6.7	-110.91	-220.5	255.3	349.8	339.1	10.63	32.891		
1,700.0	1,667.6	1,639.3	1,581.8	6.1	7.4	-110.15	-243.6	278.3	380.7	369.2	11.47	33.179		
1,800.0	1,765.0	1,734.3	1,671.0	6.5	8.0	-109.51	-266.8	301.3	411.6	399.3	12.31	33.436		
1,900.0	1,862.3	1,829.3	1,760.2	7.0	8.6	-108.96	-290.0	324.4	442.6	429.5	13.15	33.665		
2,000.0	1,959.6	1,924.3	1,849.4	7.4	9.2	-108.48	-313.1	347.4	473.6	459.7	13.98	33.871		

Anticollision Report

Company:	EnCana Oil & Gas (USA) Inc	Local Co-ordinate Reference:	Well Gardner 28-3DD
Project:	S. Piceance (Parachute)	TVD Reference:	KBE @ 6442.0ft (Nabors M13)
Reference Site:	NENW Sec28-T7S-R95W (PC-28)	MD Reference:	KBE @ 6442.0ft (Nabors M13)
Site Error:	0.0ft	North Reference:	True
Reference Well:	Gardner 28-3DD	Survey Calculation Method:	Minimum Curvature
Well Error:	0.0ft	Output errors are at	2.00 sigma
Reference Wellbore	DD	Database:	USA EDM 5000 Multi Users DB
Reference Design:	Plan #1	Offset TVD Reference:	Offset Datum

Offset Design NENW Sec28-T7S-R95W (PC-28) - Gardner Federal 28-3B - DD - Plan #1														Offset Site Error:	0.0 ft
Survey Program: 0-MWD														Offset Well Error:	0.0 ft
Reference		Offset		Semi Major Axis		Distance									
Measured Depth (ft)	Vertical Depth (ft)	Measured Depth (ft)	Vertical Depth (ft)	Reference (ft)	Offset (ft)	Highside Toolface (°)	Offset Wellbore Centre +N/-S (ft)	+E/-W (ft)	Between Centres (ft)	Between Ellipses (ft)	Total Uncertainty Axis	Separation Factor	Warning		
0.0	0.0	0.0	0.0	0.0	0.0	31.10	9.8	5.9	11.5						
100.0	100.0	100.0	100.0	0.1	0.1	31.10	9.8	5.9	11.5	11.2	0.27	42.183			
200.0	200.0	200.0	200.0	0.3	0.3	31.10	9.8	5.9	11.5	10.9	0.62	18.485 CC, ES			
300.0	300.0	300.2	300.2	0.5	0.5	-170.03	9.6	5.6	13.6	12.7	0.97	14.067			
400.0	399.6	400.5	400.4	0.7	0.7	-178.91	7.4	2.8	18.4	17.1	1.32	13.964 SF			
500.0	498.8	500.8	500.4	1.0	0.9	171.87	3.2	-2.8	26.0	24.3	1.68	15.458			
600.0	597.1	600.8	600.0	1.4	1.1	164.62	-3.1	-11.2	36.7	34.6	2.09	17.546			
643.7	639.7	644.5	643.3	1.5	1.2	162.10	-6.5	-15.7	42.4	40.1	2.30	18.449			
700.0	694.5	700.8	698.9	1.8	1.4	159.09	-11.5	-22.3	49.9	47.3	2.59	19.276			
800.0	791.8	800.0	796.9	2.2	1.7	154.44	-21.2	-35.0	62.6	59.5	3.15	19.871			
900.0	889.1	899.1	894.7	2.6	2.0	151.36	-30.8	-47.8	75.6	71.9	3.74	20.196			
1,000.0	986.4	998.2	992.4	3.0	2.3	149.18	-40.4	-60.5	88.8	84.4	4.35	20.388			
1,100.0	1,083.8	1,097.3	1,090.2	3.5	2.7	147.57	-50.1	-73.2	102.0	97.0	4.97	20.510			
1,200.0	1,181.1	1,196.3	1,188.0	3.9	3.0	146.33	-59.7	-86.0	115.3	109.7	5.60	20.590			
1,300.0	1,278.4	1,295.4	1,285.8	4.3	3.3	145.34	-69.3	-98.7	128.7	122.4	6.23	20.646			
1,400.0	1,375.7	1,394.5	1,383.6	4.8	3.6	144.54	-79.0	-111.4	142.0	135.2	6.87	20.686			
1,500.0	1,473.0	1,493.6	1,481.4	5.2	3.9	143.88	-88.6	-124.2	155.4	147.9	7.50	20.716			
1,600.0	1,570.3	1,592.7	1,579.2	5.7	4.3	143.32	-98.3	-136.9	168.9	160.7	8.14	20.738			
1,700.0	1,667.6	1,691.8	1,677.0	6.1	4.6	142.85	-107.9	-149.6	182.3	173.5	8.78	20.756			
1,800.0	1,765.0	1,790.8	1,774.7	6.5	4.9	142.44	-117.5	-162.4	195.7	186.3	9.42	20.770			
1,900.0	1,862.3	1,889.9	1,872.5	7.0	5.3	142.08	-127.2	-175.1	209.2	199.1	10.07	20.781			
2,000.0	1,959.6	1,989.0	1,970.3	7.4	5.6	141.77	-136.8	-187.8	222.6	211.9	10.71	20.790			
2,100.0	2,056.9	2,088.1	2,068.1	7.8	5.9	141.49	-146.4	-200.6	236.1	224.7	11.35	20.798			
2,200.0	2,154.2	2,187.2	2,165.9	8.3	6.2	141.24	-156.1	-213.3	249.6	237.6	12.00	20.804			
2,300.0	2,251.5	2,286.3	2,263.7	8.7	6.6	141.02	-165.7	-226.0	263.0	250.4	12.64	20.809			
2,400.0	2,348.8	2,385.4	2,361.5	9.2	6.9	140.82	-175.4	-238.8	276.5	263.2	13.28	20.814			
2,500.0	2,446.2	2,484.4	2,459.3	9.6	7.2	140.64	-185.0	-251.5	290.0	276.1	13.93	20.817			
2,600.0	2,543.5	2,583.5	2,557.1	10.0	7.6	140.47	-194.6	-264.2	303.5	288.9	14.58	20.821			
2,700.0	2,640.8	2,682.6	2,654.8	10.5	7.9	140.32	-204.3	-277.0	316.9	301.7	15.22	20.824			
2,800.0	2,738.1	2,781.7	2,752.6	10.9	8.2	140.18	-213.9	-289.7	330.4	314.6	15.87	20.826			
2,900.0	2,835.4	2,880.8	2,850.4	11.3	8.5	140.05	-223.6	-302.4	343.9	327.4	16.51	20.828			
3,000.0	2,932.7	2,979.9	2,948.2	11.8	8.9	139.93	-233.2	-315.2	357.4	340.3	17.16	20.830			
3,100.0	3,030.0	3,078.9	3,046.0	12.2	9.2	139.82	-242.8	-327.9	370.9	353.1	17.80	20.832			
3,200.0	3,127.3	3,178.0	3,143.8	12.7	9.5	139.72	-252.5	-340.6	384.4	365.9	18.45	20.834			
3,300.0	3,224.7	3,277.1	3,241.6	13.1	9.9	139.62	-262.1	-353.4	397.9	378.8	19.10	20.835			
3,400.0	3,322.0	3,376.2	3,339.4	13.5	10.2	139.54	-271.7	-366.1	411.4	391.6	19.74	20.836			
3,500.0	3,419.3	3,475.3	3,437.1	14.0	10.5	139.45	-281.4	-378.8	424.9	404.5	20.39	20.837			
3,600.0	3,516.6	3,574.4	3,534.9	14.4	10.8	139.37	-291.0	-391.6	438.4	417.3	21.04	20.838			
3,700.0	3,613.9	3,673.4	3,632.7	14.9	11.2	139.30	-300.7	-404.3	451.9	430.2	21.68	20.839			
3,800.0	3,711.2	3,772.5	3,730.5	15.3	11.5	139.23	-310.3	-417.0	465.4	443.0	22.33	20.840			
3,900.0	3,808.5	3,871.6	3,828.3	15.7	11.8	139.16	-319.9	-429.8	478.9	455.9	22.98	20.841			
4,000.0	3,905.9	3,970.7	3,926.1	16.2	12.2	139.10	-329.6	-442.5	492.3	468.7	23.62	20.842			

Anticollision Report

Company:	EnCana Oil & Gas (USA) Inc	Local Co-ordinate Reference:	Well Gardner 28-3DD
Project:	S. Piceance (Parachute)	TVD Reference:	KBE @ 6442.0ft (Nabors M13)
Reference Site:	NENW Sec28-T7S-R95W (PC-28)	MD Reference:	KBE @ 6442.0ft (Nabors M13)
Site Error:	0.0ft	North Reference:	True
Reference Well:	Gardner 28-3DD	Survey Calculation Method:	Minimum Curvature
Well Error:	0.0ft	Output errors are at	2.00 sigma
Reference Wellbore	DD	Database:	USA EDM 5000 Multi Users DB
Reference Design:	Plan #1	Offset TVD Reference:	Offset Datum

Reference Depths are relative to KBE @ 6442.0ft (Nabors M13)

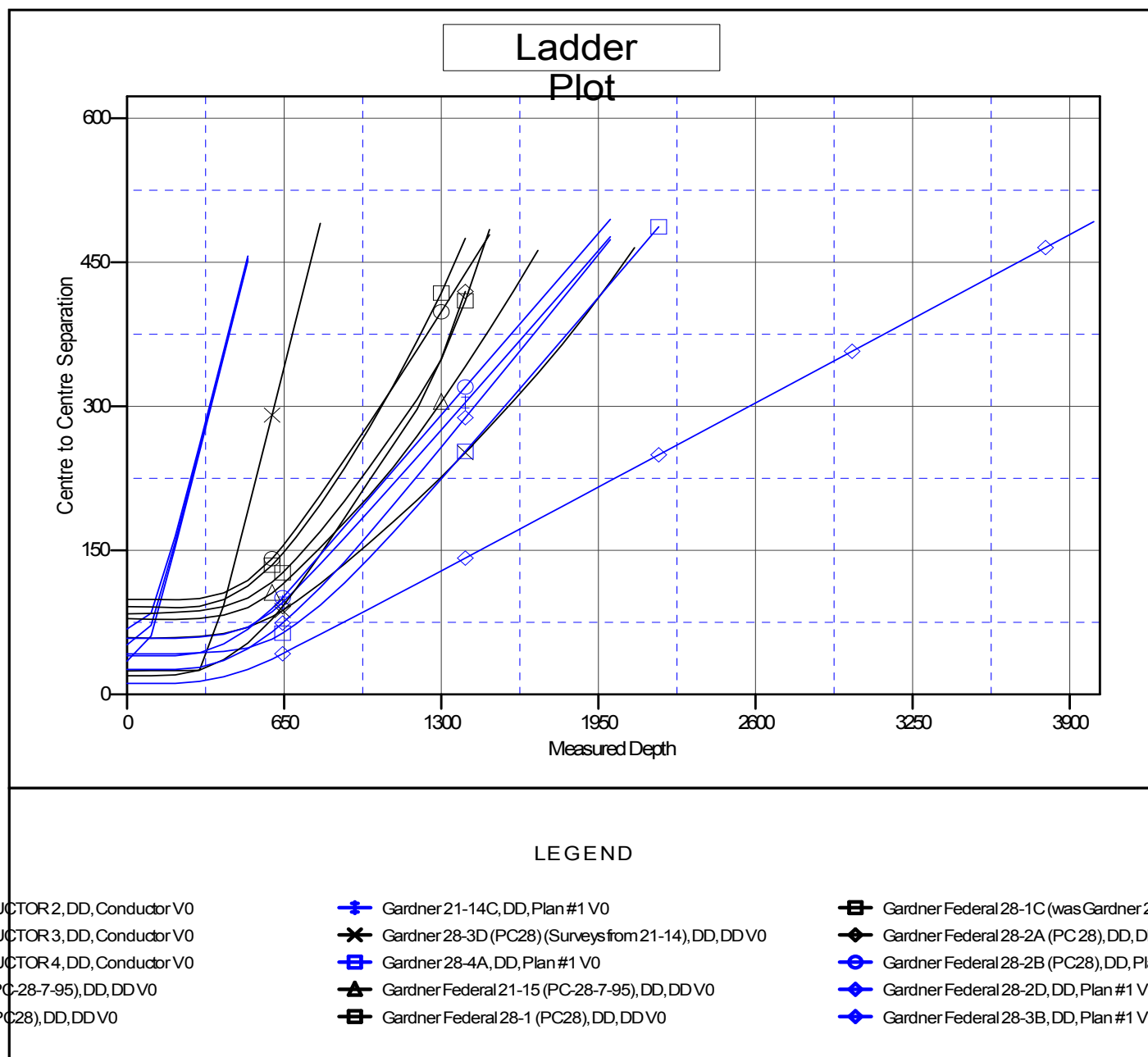
Offset Depths are relative to Offset Datum

Central Meridian is -105.500000 °

Coordinates are relative to: Gardner 28-3DD

Coordinate System is US State Plane 1983, Colorado Central Zone

Grid Convergence at Surface is: -1.58°



CC - Min centre to center distance or convergent point, SF - min separation factor, ES - min ellipse separation