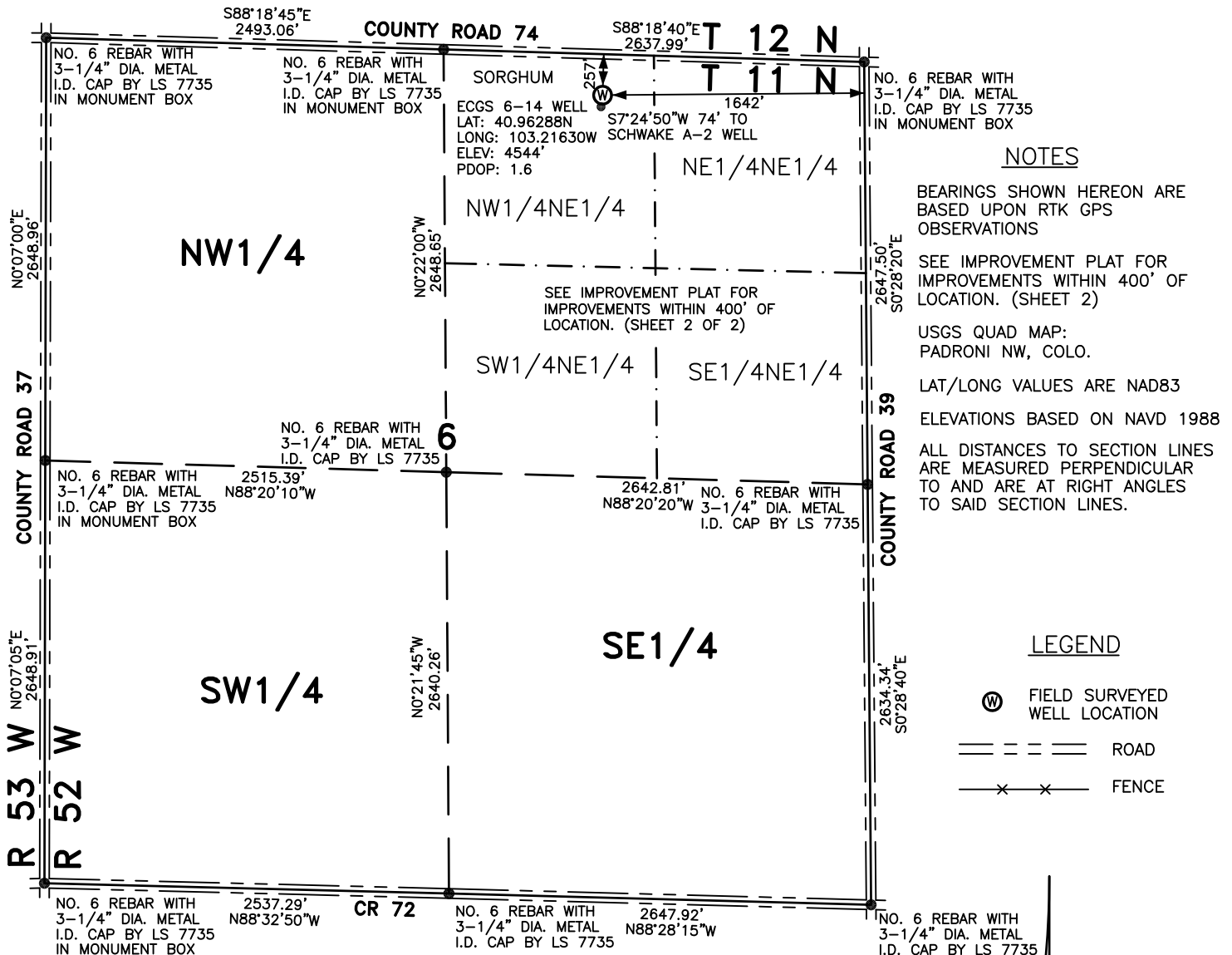
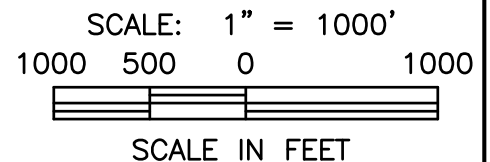


WELL LOCATION FOR MERCHANT ENERGY PARTNERS, LLC



THIS WELL LOCATION PLAT HAS BEEN PREPARED FOR MERCHANT ENERGY PARTNERS, LLC, TO LOCATE THE ECGS 6-14 WELL BEING 1642 FEET FROM THE EAST LINE AND 257 FEET FROM THE NORTH LINE IN THE NW1/4NE1/4 OF SECTION 6, TOWNSHIP 11 NORTH, RANGE 52 WEST OF THE 6TH P.M., LOGAN COUNTY, COLORADO. THE SURFACE ELEVATION AT THIS POINT IS 4544 FEET. THIS IS NOT A LAND SURVEY PLAT.



LEIBERT-McATEE & ASSOCIATES, INC.

P.O. BOX 442 615 SOUTH TENTH AVENUE
STERLING, CO 80751 970-522-1960

FIELD DATE: 3-28-12	DWG DATE: 4-20-12	GPS OPERATOR: DARREN VEAL
ECGS 6-14	DWG NO. 376-12	SHEET 1 OF 2