

DJ/Paradox/WTX

Wattenberg

New Drills

Goltl 43-26

Wellbore #1

Plan: Design #1

Standard Planning Report

14 May, 2010

EnCana Corporation

Planning Report

Database:	EDM	Local Co-ordinate Reference:	Well Golti 43-26
Company:	DJ/Paradox/WTX	TVD Reference:	WELL @ 5184.0ft (Original Well Elev)
Project:	Wattenberg	MD Reference:	WELL @ 5184.0ft (Original Well Elev)
Site:	New Drills	North Reference:	True
Well:	Golti 43-26	Survey Calculation Method:	Minimum Curvature
Wellbore:	Wellbore #1		
Design:	Design #1		

Project	Wattenberg,		
Map System:	US State Plane 1983	System Datum:	Mean Sea Level
Geo Datum:	North American Datum 1983		
Map Zone:	Colorado Northern Zone		

Site		New Drills				
Site Position:		Northing:	1,252,450.66 ft	Latitude:	40° 1' 32.016 N	
From:	Lat/Long	Easting:	3,120,627.66 ft	Longitude:	105° 4' 9.336 W	
Position Uncertainty:		ft	Slot Radius:	in	Grid Convergence:	0.28 °

Well	Golti 43-26					
Well Position	+N/-S	-2,891.4 ft	Northing:	1,249,735.86 ft	Latitude:	40° 1' 3.612 N
	+E/-W	29,245.5 ft	Easting:	3,149,890.04 ft	Longitude:	104° 57' 53.388 W
Position Uncertainty		ft	Wellhead Elevation:	ft	Ground Level:	5,171.0 ft

Wellbore	Wellbore #1				
Magnetics	Model Name	Sample Date	Declination (°)	Dip Angle (°)	Field Strength (nT)
	IGRF200510	12/31/2009	9.09	66.76	53,078

Design	Design #1			
Audit Notes:				
Version:	Phase:	PROTOTYPE	Tie On Depth:	0.0
Vertical Section:	Depth From (TVD)	+N/-S (ft)	+E/-W (ft)	Direction (°)
	0.0	0.0	0.0	16.66

Plan Sections										
Measured Depth (ft)	Inclination (°)	Azimuth (°)	Vertical Depth (ft)	+N/-S (ft)	+E/-W (ft)	Dogleg Rate (°/100ft)	Build Rate (°/100ft)	Turn Rate (°/100ft)	TFO (°)	Target
0.0	0.00	0.00	0.0	0.0	0.0	0.00	0.00	0.00	0.00	
1,230.0	0.00	0.00	1,230.0	0.0	0.0	0.00	0.00	0.00	0.00	
1,676.2	8.92	16.66	1,674.4	33.2	9.9	2.00	2.00	0.00	16.66	
7,086.9	8.92	16.66	7,019.6	837.4	250.5	0.00	0.00	0.00	0.00	
7,533.1	0.00	0.00	7,464.0	870.6	260.5	2.00	-2.00	0.00	180.00	
8,633.1	0.00	0.00	8,564.0	870.6	260.5	0.00	0.00	0.00	0.00	Golti 43-26

EnCana Corporation

Planning Report

Database:	EDM	Local Co-ordinate Reference:	Well Golt 43-26
Company:	DJ/Paradox/WTX	TVD Reference:	WELL @ 5184.0ft (Original Well Elev)
Project:	Wattenberg	MD Reference:	WELL @ 5184.0ft (Original Well Elev)
Site:	New Drills	North Reference:	True
Well:	Golt 43-26	Survey Calculation Method:	Minimum Curvature
Wellbore:	Wellbore #1		
Design:	Design #1		

Planned Survey									
Measured Depth (ft)	Inclination (°)	Azimuth (°)	Vertical Depth (ft)	+N/-S (ft)	+E/-W (ft)	Vertical Section (ft)	Dogleg Rate (°/100ft)	Build Rate (°/100ft)	Turn Rate (°/100ft)
0.0	0.00	0.00	0.0	0.0	0.0	0.0	0.00	0.00	0.00
100.0	0.00	0.00	100.0	0.0	0.0	0.0	0.00	0.00	0.00
200.0	0.00	0.00	200.0	0.0	0.0	0.0	0.00	0.00	0.00
300.0	0.00	0.00	300.0	0.0	0.0	0.0	0.00	0.00	0.00
400.0	0.00	0.00	400.0	0.0	0.0	0.0	0.00	0.00	0.00
500.0	0.00	0.00	500.0	0.0	0.0	0.0	0.00	0.00	0.00
600.0	0.00	0.00	600.0	0.0	0.0	0.0	0.00	0.00	0.00
700.0	0.00	0.00	700.0	0.0	0.0	0.0	0.00	0.00	0.00
800.0	0.00	0.00	800.0	0.0	0.0	0.0	0.00	0.00	0.00
900.0	0.00	0.00	900.0	0.0	0.0	0.0	0.00	0.00	0.00
1,000.0	0.00	0.00	1,000.0	0.0	0.0	0.0	0.00	0.00	0.00
1,100.0	0.00	0.00	1,100.0	0.0	0.0	0.0	0.00	0.00	0.00
1,180.0	0.00	0.00	1,180.0	0.0	0.0	0.0	0.00	0.00	0.00
Surface									
1,200.0	0.00	0.00	1,200.0	0.0	0.0	0.0	0.00	0.00	0.00
1,230.0	0.00	0.00	1,230.0	0.0	0.0	0.0	0.00	0.00	0.00
1,300.0	1.40	16.66	1,300.0	0.8	0.2	0.9	2.00	2.00	0.00
1,400.0	3.40	16.66	1,399.9	4.8	1.4	5.0	2.00	2.00	0.00
1,500.0	5.40	16.66	1,499.6	12.2	3.6	12.7	2.00	2.00	0.00
1,600.0	7.40	16.66	1,599.0	22.9	6.8	23.9	2.00	2.00	0.00
1,676.2	8.92	16.66	1,674.4	33.2	9.9	34.7	2.00	2.00	0.00
1,700.0	8.92	16.66	1,697.9	36.8	11.0	38.4	0.00	0.00	0.00
1,800.0	8.92	16.66	1,796.7	51.6	15.4	53.9	0.00	0.00	0.00
1,900.0	8.92	16.66	1,895.5	66.5	19.9	69.4	0.00	0.00	0.00
2,000.0	8.92	16.66	1,994.3	81.3	24.3	84.9	0.00	0.00	0.00
2,100.0	8.92	16.66	2,093.1	96.2	28.8	100.4	0.00	0.00	0.00
2,200.0	8.92	16.66	2,191.9	111.1	33.2	115.9	0.00	0.00	0.00
2,300.0	8.92	16.66	2,290.6	125.9	37.7	131.5	0.00	0.00	0.00
2,400.0	8.92	16.66	2,389.4	140.8	42.1	147.0	0.00	0.00	0.00
2,500.0	8.92	16.66	2,488.2	155.7	46.6	162.5	0.00	0.00	0.00
2,600.0	8.92	16.66	2,587.0	170.5	51.0	178.0	0.00	0.00	0.00
2,700.0	8.92	16.66	2,685.8	185.4	55.5	193.5	0.00	0.00	0.00
2,800.0	8.92	16.66	2,784.6	200.3	59.9	209.0	0.00	0.00	0.00
2,900.0	8.92	16.66	2,883.4	215.1	64.4	224.5	0.00	0.00	0.00
3,000.0	8.92	16.66	2,982.2	230.0	68.8	240.0	0.00	0.00	0.00
3,100.0	8.92	16.66	3,081.0	244.8	73.2	255.6	0.00	0.00	0.00
3,200.0	8.92	16.66	3,179.7	259.7	77.7	271.1	0.00	0.00	0.00
3,300.0	8.92	16.66	3,278.5	274.6	82.1	286.6	0.00	0.00	0.00
3,400.0	8.92	16.66	3,377.3	289.4	86.6	302.1	0.00	0.00	0.00
3,500.0	8.92	16.66	3,476.1	304.3	91.0	317.6	0.00	0.00	0.00
3,600.0	8.92	16.66	3,574.9	319.2	95.5	333.1	0.00	0.00	0.00
3,700.0	8.92	16.66	3,673.7	334.0	99.9	348.6	0.00	0.00	0.00
3,800.0	8.92	16.66	3,772.5	348.9	104.4	364.2	0.00	0.00	0.00
3,900.0	8.92	16.66	3,871.3	363.7	108.8	379.7	0.00	0.00	0.00
4,000.0	8.92	16.66	3,970.1	378.6	113.3	395.2	0.00	0.00	0.00
4,100.0	8.92	16.66	4,068.9	393.5	117.7	410.7	0.00	0.00	0.00
4,200.0	8.92	16.66	4,167.6	408.3	122.2	426.2	0.00	0.00	0.00
4,300.0	8.92	16.66	4,266.4	423.2	126.6	441.7	0.00	0.00	0.00
4,400.0	8.92	16.66	4,365.2	438.1	131.1	457.2	0.00	0.00	0.00
4,500.0	8.92	16.66	4,464.0	452.9	135.5	472.8	0.00	0.00	0.00
4,600.0	8.92	16.66	4,562.8	467.8	139.9	488.3	0.00	0.00	0.00
4,700.0	8.92	16.66	4,661.6	482.6	144.4	503.8	0.00	0.00	0.00
4,800.0	8.92	16.66	4,760.4	497.5	148.8	519.3	0.00	0.00	0.00
4,854.3	8.92	16.66	4,814.0	505.6	151.3	527.7	0.00	0.00	0.00

EnCana Corporation

Planning Report

Database:	EDM	Local Co-ordinate Reference:	Well Golt 43-26
Company:	DJ/Paradox/WTX	TVD Reference:	WELL @ 5184.0ft (Original Well Elev)
Project:	Wattenberg	MD Reference:	WELL @ 5184.0ft (Original Well Elev)
Site:	New Drills	North Reference:	True
Well:	Golt 43-26	Survey Calculation Method:	Minimum Curvature
Wellbore:	Wellbore #1		
Design:	Design #1		

Planned Survey									
Measured Depth (ft)	Inclination (°)	Azimuth (°)	Vertical Depth (ft)	+N/-S (ft)	+E/-W (ft)	Vertical Section (ft)	Dogleg Rate (°/100ft)	Build Rate (°/100ft)	Turn Rate (°/100ft)
Sussex									
4,900.0	8.92	16.66	4,859.2	512.4	153.3	534.8	0.00	0.00	0.00
5,000.0	8.92	16.66	4,958.0	527.2	157.7	550.3	0.00	0.00	0.00
5,100.0	8.92	16.66	5,056.7	542.1	162.2	565.8	0.00	0.00	0.00
5,200.0	8.92	16.66	5,155.5	557.0	166.6	581.3	0.00	0.00	0.00
5,300.0	8.92	16.66	5,254.3	571.8	171.1	596.9	0.00	0.00	0.00
5,400.0	8.92	16.66	5,353.1	586.7	175.5	612.4	0.00	0.00	0.00
5,476.8	8.92	16.66	5,429.0	598.1	178.9	624.3	0.00	0.00	0.00
Shannon									
5,500.0	8.92	16.66	5,451.9	601.5	180.0	627.9	0.00	0.00	0.00
5,600.0	8.92	16.66	5,550.7	616.4	184.4	643.4	0.00	0.00	0.00
5,700.0	8.92	16.66	5,649.5	631.3	188.9	658.9	0.00	0.00	0.00
5,800.0	8.92	16.66	5,748.3	646.1	193.3	674.4	0.00	0.00	0.00
5,900.0	8.92	16.66	5,847.1	661.0	197.8	689.9	0.00	0.00	0.00
6,000.0	8.92	16.66	5,945.9	675.9	202.2	705.5	0.00	0.00	0.00
6,100.0	8.92	16.66	6,044.6	690.7	206.6	721.0	0.00	0.00	0.00
6,200.0	8.92	16.66	6,143.4	705.6	211.1	736.5	0.00	0.00	0.00
6,300.0	8.92	16.66	6,242.2	720.4	215.5	752.0	0.00	0.00	0.00
6,400.0	8.92	16.66	6,341.0	735.3	220.0	767.5	0.00	0.00	0.00
6,500.0	8.92	16.66	6,439.8	750.2	224.4	783.0	0.00	0.00	0.00
6,600.0	8.92	16.66	6,538.6	765.0	228.9	798.5	0.00	0.00	0.00
6,700.0	8.92	16.66	6,637.4	779.9	233.3	814.1	0.00	0.00	0.00
6,800.0	8.92	16.66	6,736.2	794.8	237.8	829.6	0.00	0.00	0.00
6,900.0	8.92	16.66	6,835.0	809.6	242.2	845.1	0.00	0.00	0.00
7,000.0	8.92	16.66	6,933.7	824.5	246.7	860.6	0.00	0.00	0.00
7,086.9	8.92	16.66	7,019.6	837.4	250.5	874.1	0.00	0.00	0.00
7,100.0	8.66	16.66	7,032.5	839.3	251.1	876.1	2.00	-2.00	0.00
7,200.0	6.66	16.66	7,131.6	852.1	254.9	889.4	2.00	-2.00	0.00
7,300.0	4.66	16.66	7,231.1	861.5	257.7	899.3	2.00	-2.00	0.00
7,400.0	2.66	16.66	7,330.9	867.7	259.6	905.7	2.00	-2.00	0.00
7,500.0	0.66	16.66	7,430.9	870.4	260.4	908.6	2.00	-2.00	0.00
7,533.1	0.00	0.00	7,464.0	870.6	260.5	908.8	2.00	-2.00	0.00
7,600.0	0.00	0.00	7,530.9	870.6	260.5	908.8	0.00	0.00	0.00
7,618.1	0.00	0.00	7,549.0	870.6	260.5	908.8	0.00	0.00	0.00
Niobrara									
7,700.0	0.00	0.00	7,630.9	870.6	260.5	908.8	0.00	0.00	0.00
7,800.0	0.00	0.00	7,730.9	870.6	260.5	908.8	0.00	0.00	0.00
7,900.0	0.00	0.00	7,830.9	870.6	260.5	908.8	0.00	0.00	0.00
8,000.0	0.00	0.00	7,930.9	870.6	260.5	908.8	0.00	0.00	0.00
8,038.1	0.00	0.00	7,969.0	870.6	260.5	908.8	0.00	0.00	0.00
Codell									
8,100.0	0.00	0.00	8,030.9	870.6	260.5	908.8	0.00	0.00	0.00
8,200.0	0.00	0.00	8,130.9	870.6	260.5	908.8	0.00	0.00	0.00
8,300.0	0.00	0.00	8,230.9	870.6	260.5	908.8	0.00	0.00	0.00
8,400.0	0.00	0.00	8,330.9	870.6	260.5	908.8	0.00	0.00	0.00
8,483.1	0.00	0.00	8,414.0	870.6	260.5	908.8	0.00	0.00	0.00
J Sand									
8,500.0	0.00	0.00	8,430.9	870.6	260.5	908.8	0.00	0.00	0.00
8,600.0	0.00	0.00	8,530.9	870.6	260.5	908.8	0.00	0.00	0.00
8,633.1	0.00	0.00	8,564.0	870.6	260.5	908.8	0.00	0.00	0.00
Production									

EnCana Corporation

Planning Report

Database:	EDM	Local Co-ordinate Reference:	Well Goltl 43-26
Company:	DJ/Paradox/WTX	TVD Reference:	WELL @ 5184.0ft (Original Well Elev)
Project:	Wattenberg	MD Reference:	WELL @ 5184.0ft (Original Well Elev)
Site:	New Drills	North Reference:	True
Well:	Goltl 43-26	Survey Calculation Method:	Minimum Curvature
Wellbore:	Wellbore #1		
Design:	Design #1		

Design Targets									
Target Name	Dip Angle	Dip Dir.	TVD	+N/-S	+E/-W	Northing	Easting	Latitude	Longitude
- hit/miss target	(°)	(°)	(ft)	(ft)	(ft)	(ft)	(ft)		
- Shape									
Goltl 43-26	0.00	0.00	8,564.0	870.6	260.5	1,250,608.04	3,150,145.25	40° 1' 12.216 N	104° 57' 50.040 W
- plan hits target									
- Circle (radius 100.0)									

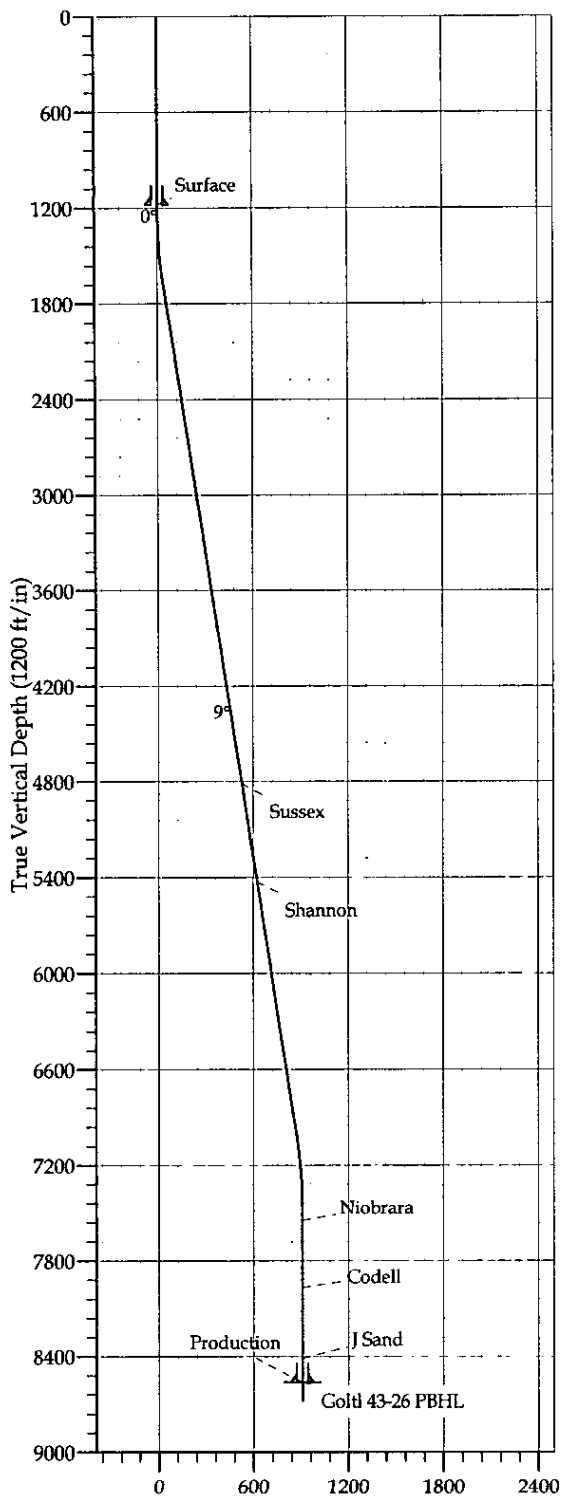
Casing Points					
Measured Depth	Vertical Depth	Name		Casing Diameter	Hole Diameter
(ft)	(ft)			(in)	(in)
1,180.0	1,180.0	Surface		8.625	12.250
8,633.1	8,564.0	Production		4.500	7.875

Formations						
Measured Depth	Vertical Depth	Name		Lithology	Dip	Dip Direction
(ft)	(ft)				(°)	(°)
4,854.3	4,814.0	Sussex			0.00	
5,476.8	5,429.0	Shannon			0.00	
7,618.1	7,549.0	Niobrara			0.00	
8,038.1	7,969.0	Codell			0.00	
8,483.1	8,414.0	J Sand			0.00	



02557456

Deviated Drilling Plan



Vertical Section at 16.66° (1200 ft/in)

REFERENCE INFORMATION

Co-ordinate (N/E) Reference: Well Goldt 43-26, True North
 Vertical (TVD) Reference: WELL @ 5184.0ft (Original Well Elev)
 Section (VS) Reference: Slot - (0.0N, 0.0E)
 Measured Depth Reference: WELL @ 5184.0ft (Original Well Elev)
 Calculation Method:

RECEIVED

MAY 17 2010 1/5

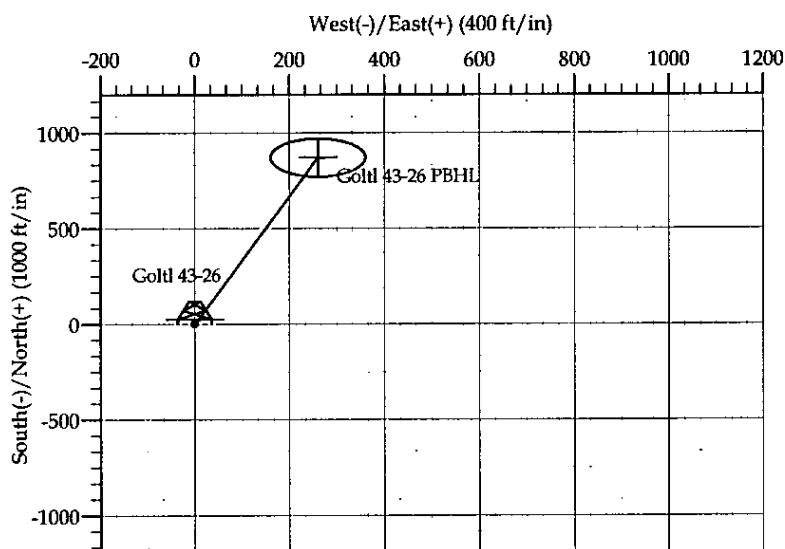
COGCC

WELL DETAILS: Goldt 43-26

+N/-S	+E/-W	Northing	Ground Level: Easting	Latitude	Longitude	Slot
0.0	0.0	1249735.86	3149890.04	40° 1' 3.612 N 104° 57' 53.388 W		

SECTION DETAILS

Sec	MD	Inc	Azi	TVD	+N/-S	+E/-W	DLeg	TFace	VSec	Target
1	0.0	0.00	0.00	0.0	0.0	0.0	0.00	0.00	0.0	
2	1230.0	0.00	0.00	1230.0	0.0	0.0	0.00	0.00	0.0	
3	1676.2	8.92	16.66	1674.4	33.2	9.9	2.00	16.66	34.7	
4	7086.9	8.92	16.66	7019.6	837.4	250.5	0.00	0.00	874.1	
5	7533.1	0.00	0.00	7464.0	870.6	260.5	2.00	180.00	908.8	
6	8633.1	0.00	0.00	8564.0	870.6	260.5	0.00	0.00	908.8	Goldt 43-26 PBHL



FORMATION TOP DETAILS

TVDPath	MDPath	Formation
4814.0	4854.3	Sussex
5429.0	5476.8	Shannon
7549.0	7618.1	Niobrara
7969.0	8038.1	Codell
8414.0	8483.1	J Sand

CASING DETAILS

TVD	MD	Name	Size
1180.0	1180.0	Surface	8.625
8564.0	8633.1	Production	4.500