
LARAMIE ENERGY II LLC EBUSINESS

**BRUTON 30-06B
WILD CAT
Mesa County , Colorado**

Cement Surface Casing
02-Feb-2012

Post Job Report

The Road to Excellence Starts with Safety

Sold To #: 344919	Ship To #: 344919	Quote #:	Sales Order #: 9151851
Customer: LARAMIE ENERGY II LLC EBUSINESS	Customer Rep: Claussen, Cory		
Well Name: BRUTON	Well #: 30-06B	API/UWI #: 05-077-10104	
Field: WILD CAT	City (SAP): DENVER	County/Parish: Mesa	State: Colorado
Lat: N 39.248 deg. OR N 39 deg. 14 min. 52.159 secs.	Long: W 107.809 deg. OR W -108 deg. 11 min. 28.784 secs.		
Contractor: PRECISION 706	Rig/Platform Name/Num: PRECISION 706		
Job Purpose: Cement Surface Casing			
Well Type: Development Well	Job Type: Cement Surface Casing		
Sales Person: METLI, MARSHALL	Srvc Supervisor: YOUNG, JEREMY	MBU ID Emp #: 418013	

Job Personnel

HES Emp Name	Exp Hrs	Emp #	HES Emp Name	Exp Hrs	Emp #	HES Emp Name	Exp Hrs	Emp #
BATH, KYLE Thomas	7	477632	BECK, MICHAEL George	7	489151	PARKER, BRANDON	7	503646
YOUNG, JEREMY R	7	418013						

Equipment

HES Unit #	Distance-1 way	HES Unit #	Distance-1 way	HES Unit #	Distance-1 way	HES Unit #	Distance-1 way
10011429	42.5 mile	10867322	42.5 mile	10876398	42.5 mile	10998512	42.5 mile
11259881	42.5 mile	11560046	42.5 mile	11562538	42.5 mile		

Job Hours

Date	On Location Hours	Operating Hours	Date	On Location Hours	Operating Hours	Date	On Location Hours	Operating Hours
02/02/2012	7	3						

TOTAL Total is the sum of each column separately

Job

Job Times

Formation Name	Formation Depth (MD)	Top	Bottom	Called Out	Date	Time	Time Zone
Form Type		BHST		On Location	01 - Feb - 2012	20:45	MST
Job depth MD	1563. ft	Job Depth TVD	1563. ft	Job Started	02 - Feb - 2012	01:00	MST
Water Depth		Wk Ht Above Floor	4. ft	Job Completed	02 - Feb - 2012	05:40	MST
Perforation Depth (MD)	From	To		Job Completed	02 - Feb - 2012	06:56	MST
				Departed Loc	02 - Feb - 2012	08:00	MST

Well Data

Description	New / Used	Max pressure psig	Size in	ID in	Weight lbm/ft	Thread	Grade	Top MD ft	Bottom MD ft	Top TVD ft	Bottom TVD ft
OPEN HOLE				12.25				.	1565.		
SURFACE CASING	Unknown		8.625	7.921	32.		J-55	.	1563.		

Sales/Rental/3rd Party (HES)

Description	Qty	Qty uom	Depth	Supplier
PLUG,CMTG,TOP,8 5/8,HWE,7.20 MIN/8.09 MA	1	EA		

Tools and Accessories

Type	Size	Qty	Make	Depth	Type	Size	Qty	Make	Depth	Type	Size	Qty	Make
Guide Shoe					Packer					Top Plug	8.625	1	HES
Float Shoe					Bridge Plug					Bottom Plug			
Float Collar					Retainer					SSR plug set			
Insert Float										Plug Container	8.625	1	HES
Stage Tool										Centralizers			

Miscellaneous Materials

Gelling Agt	Conc	Surfactant	Conc	Acid Type	Qty	Conc	%
Treatment Fld	Conc	Inhibitor	Conc	Sand Type	Size	Qty	

Fluid Data

Stage/Plug #: 1

Fluid #	Stage Type	Fluid Name	Qty	Qty uom	Mixing Density lbm/gal	Yield ft ³ /sk	Mix Fluid Gal/sk	Rate bbl/min	Total Mix Fluid Gal/sk
1	Fresh Water	FRESH WATER	20.00	bbl	8.34	.0	.0	4	
2	Lead Cement	VERSACEM (TM) SYSTEM (452010)	225.0	sacks	12.3	2.38	13.77	8	13.77
3	Tail Cement	SWIFTCEM (TM) SYSTEM (452990)	200.0	sacks	14.2	1.43	6.85	8	6.85
6.85 Gal		FRESH WATER							
4	Displacement	FRESH WATER	93.70	bbl	8.33	.0	.0	10	
Calculated Values		Pressures		Volumes					
Displacement	93.7	Shut In: Instant		Lost Returns	NO	Cement Slurry	146.3	Pad	
Top Of Cement	SURFACE	5 Min		Cement Returns	45	Actual Displacement	93.7	Treatment	
Frac Gradient		15 Min		Spacers	20	Load and Breakdown		Total Job	260
Rates									
Circulating	10	Mixing	8	Displacement	10	Avg. Job	9		
Cement Left In Pipe	Amount	25.1 ft	Reason	Shoe Joint					
Frac Ring # 1 @	ID	Frac ring # 2 @	ID	Frac Ring # 3 @	ID	Frac Ring # 4 @	ID		
The Information Stated Herein Is Correct				Customer Representative Signature					

The Road to Excellence Starts with Safety

Sold To #: 344919		Ship To #: 344919		Quote #:		Sales Order #: 9151851	
Customer: LARAMIE ENERGY II LLC EBUSINESS				Customer Rep: Claussen, Cory			
Well Name: BRUTON			Well #: 30-06B			API/UWI #: 05-077-10104	
Field: WILD CAT		City (SAP): DENVER		County/Parish: Mesa		State: Colorado	
Legal Description:							
Lat: N 39.248 deg. OR N 39 deg. 14 min. 52.159 secs.				Long: W 107.809 deg. OR W -108 deg. 11 min. 28.784 secs.			
Contractor: PRECISION 706			Rig/Platform Name/Num: PRECISION 706				
Job Purpose: Cement Surface Casing						Ticket Amount:	
Well Type: Development Well			Job Type: Cement Surface Casing				
Sales Person: METLI, MARSHALL			Srvc Supervisor: YOUNG, JEREMY			MBU ID Emp #: 418013	

Activity Description	Date/Time	Cht #	Rate bbl/min	Volume bbl		Pressure psig		Comments
				Stage	Total	Tubing	Casing	
Call Out	02/01/2012 20:45							TD 1565 FT, TP 1563 FT, SHOE 25.08 FT, HOLE 12 1/4 IN, MUD WT 10 PPG, CSG 8 5/8 32 LB/FT J-55
Pre-Convoy Safety Meeting	02/01/2012 23:50							WITH ALL HES PERSONNEL
Crew Leave Yard	02/02/2012 00:00							
Arrive At Loc	02/02/2012 01:00							RIG WAS RUNNING CASING UPON HES ARRIVAL
Assessment Of Location Safety Meeting	02/02/2012 04:00							WITH ALL HES PERSONNEL
Other	02/02/2012 04:10							SPOT EQUIPMENT
Pre-Rig Up Safety Meeting	02/02/2012 04:20							WITH ALL HES PERSONNEL
Rig-Up Equipment	02/02/2012 04:30							
Pre-Job Safety Meeting	02/02/2012 05:30							WITH ALL PERSONNEL ON LOCATION
Start Job	02/02/2012 05:40							
Other	02/02/2012 05:41		2	2			67.0	FILL LINES WITH FRESH WATER
Test Lines	02/02/2012 05:43							TEST LINES TO 3600 PSI. PRESSURE HOLDING
Pump Spacer 1	02/02/2012 05:49		4	20			125.0	FRESH WATER
Pump Lead Cement	02/02/2012 06:00		8	95.4			290.0	225 SKS AT 12.3 PPG, 2.38 FT ³ /SK, 13.77 GAL/SK
Activity Description	Date/Time	Cht	Rate bbl/min	Volume bbl		Pressure psig		Comments

Sold To # : 344919

Ship To # : 344919

Quote # :

Sales Order # :

9151851

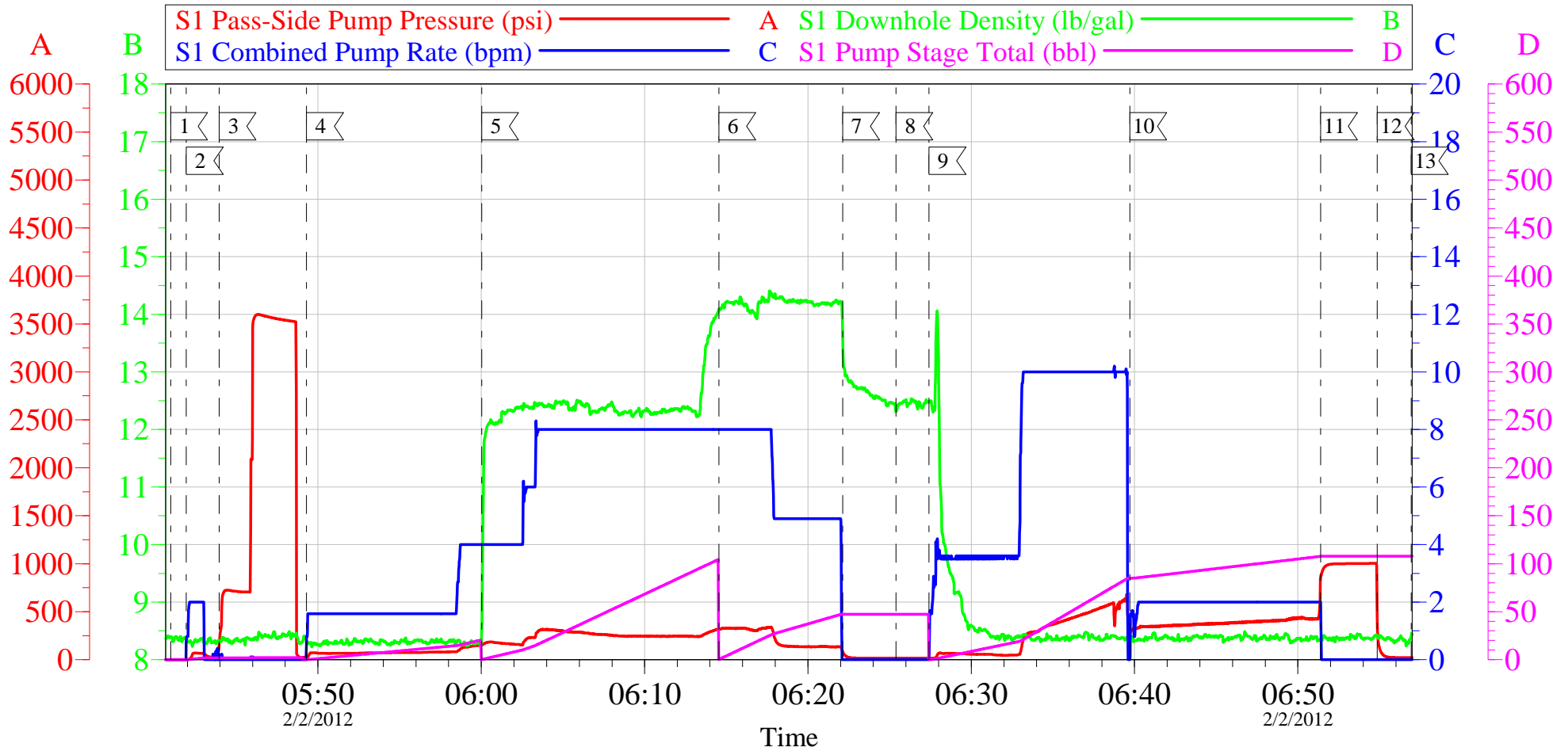
SUMMIT Version: 7.3.014

Monday, February 13, 2012 04:09:00

		#		Stage	Total	Tubing	Casing	
Pump Tail Cement	02/02/2012 06:14		8	50.9			330.0	200 SKS AT 14.2 PPG, 1.43 FT3/SK, 6.85 GAL/SK
Shutdown	02/02/2012 06:22							
Drop Top Plug	02/02/2012 06:25							PLUG LAUNCHED
Pump Displacement	02/02/2012 06:27		10	83.7			640.0	FRESH WATER
Slow Rate	02/02/2012 06:39		2	10			430.0	SLOW RATE 10 BBLs PRIOR TO CALCULATED DISPLACEMENT
Bump Plug	02/02/2012 06:51		2		93.7		1000. 0	PLUG BUMPED
Check Floats	02/02/2012 06:54							FLOATS HOLDING. RETURNED 0.5 BBL H2O TO PUMP
End Job	02/02/2012 06:56							PIPE WAS STATIC DURING JOB. GOOD CIRCULATION THROUGHOUT JOB. HES RETURNED 45 BBL CEMENT TO SURFACE
Pre-Rig Down Safety Meeting	02/02/2012 07:00							WITH ALL HES PERSONNEL
Rig-Down Equipment	02/02/2012 07:10							
Pre-Convoy Safety Meeting	02/02/2012 07:50							WITH ALL HES PERSONNEL
Crew Leave Location	02/02/2012 08:00							
Comment	02/02/2012 08:01							THANK YOU FOR USING HALLIBURTON CEMENT DEPARTMENT. JEREMY YOUNG AND CREW.

LARAMIE II- BRUTON 30-06B

8 5/8 SURFACE



Local Event Log

1 START JOB	05:40:58	2 FILL LINES	05:41:56	3 TEST LINES	05:43:57
4 PUMP H2O SPACER	05:49:18	5 PUMP LEAD CEMENT	06:00:01	6 PUMP TAIL CEMENT	06:14:33
7 SHUTDOWN	06:22:08	8 DROP TOP PLUG	06:25:24	9 PUMP DISPLACEMENT	06:27:25
10 SLOW RATE	06:39:42	11 BUMP PLUG	06:51:23	12 CHECK FLOATS	06:54:52
13 END JOB	06:56:57				

Customer: LARAMIE II
Well Description: BRUTON 30-06B
Company Rep: CORY CLAUSSEN

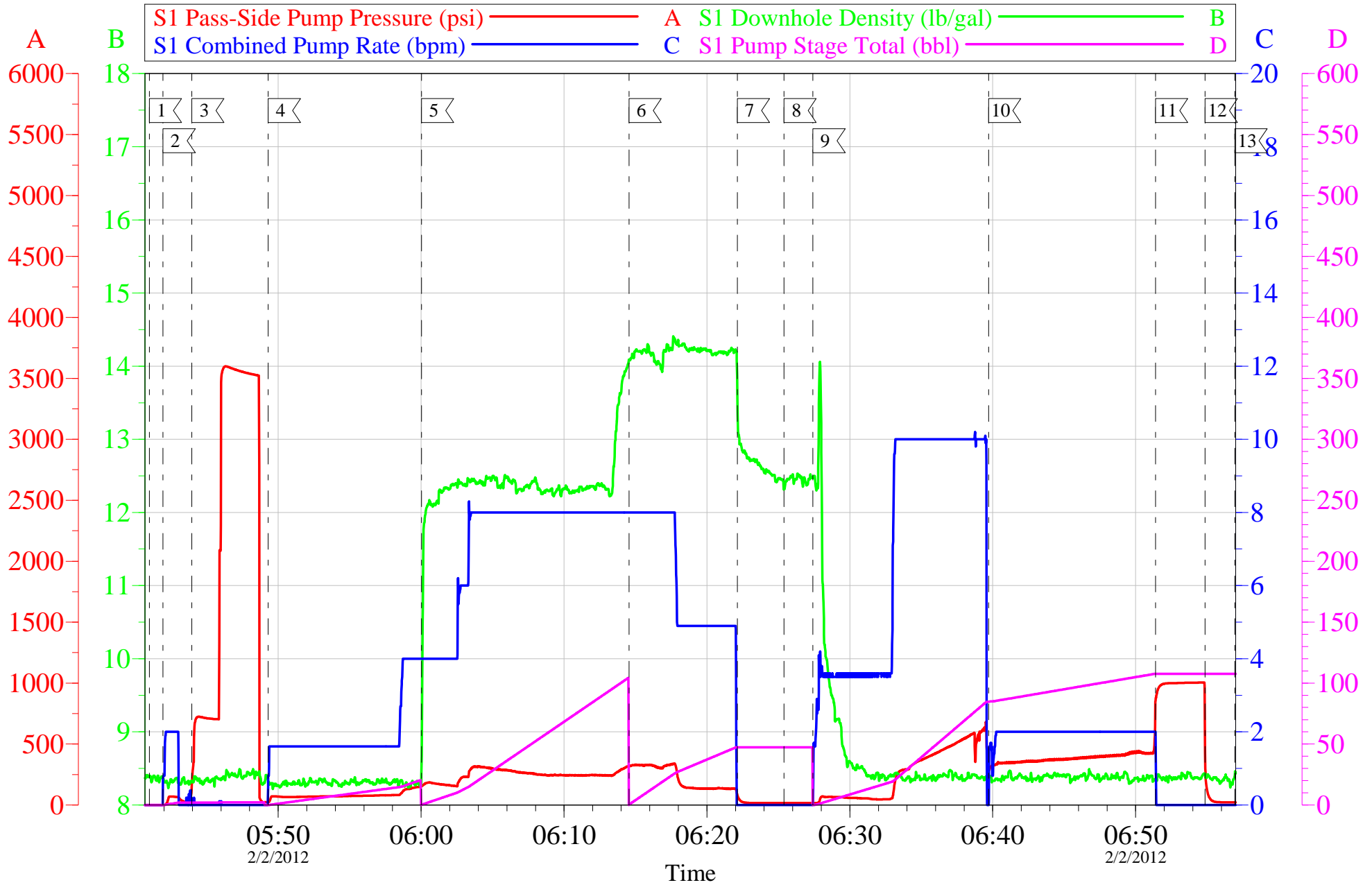
Job Date: 02-Feb-2012
Job Type: SURFACE
Cement Supervisor: JEREMY YOUNG

Sales Order #: 9151851
ADC Used: YES
Elite #5: KYLE BATH

OptiCem v6.4.10
02-Feb-12 07:06

LARAMIE II- BRUTON 30-06B

8 5/8 SURFACE



Customer: LARAMIE II
Well Description: BRUTON 30-06B
Company Rep: CORY CLAUSSEN

Job Date: 02-Feb-2012
Job Type: SURFACE
Cement Supervisor: JEREMY YOUNG

Sales Order #: 9151851
ADC Used: YES
Elite #5: KYLE BATH

OptiCem v6.4.10
02-Feb-12 07:06

HALLIBURTON

Water Analysis Report

Company: LARAMIE II

Submitted by: JEREMY YOUNG

Attention: LAB

Lease BRUTON

Well # 30-06B

Date: 2/2/2012

Date Rec.:

S.O.# 9151851

Job Type: SURFACE

Specific Gravity	<i>MAX</i>	1
pH	<i>8</i>	6.8
Potassium (K)	<i>5000</i>	250 Mg / L
Calcium (Ca)	<i>500</i>	120 Mg / L
Iron (FE2)	<i>300</i>	0 Mg / L
Chlorides (Cl)	<i>3000</i>	0 Mg / L
Sulfates (SO ₄)	<i>1500</i>	UNDER 200 Mg / L
Chlorine (Cl ₂)		0 Mg / L
Temp	<i>40-80</i>	42 Deg
Total Dissolved Solids		540 Mg / L

Respectfully: JEREMY YOUNG

Title: CEMENTING SUPERVISOR

Location: Grand Junction, CO

NOTICE:

This report is limited to the described sample tested. Any person using or relying on this report agrees that Halliburton shall not be liable for any loss or damage whether due to act or omission resulting from such report or its use.

Sales Order #: 9151851	Line Item: 10	Survey Conducted Date: 2/2/2012
Customer: LARAMIE ENERGY II LLC EBUSINESS		Job Type (BOM): CMT SURFACE CASING BOM
Customer Representative: KELLY CLAUSSEN		API / UWI: (leave blank if unknown) 05-077-10104
Well Name: BRUTON		Well Number: 30-06B
Well Type: Development Well	Well Country: United States of America	
H2S Present:	Well State: Colorado	Well County: Mesa

Dear Customer,

We hope that you were satisfied with the service quality of this job performed by Halliburton. It is the aim of our management and service personnel to deliver equipment and service of a standard unmatched in the service sector of the energy industry.

Please take the time to let us know if our performance met with your satisfaction. Please be as critical as possible to ensure we constantly improve our service. Your comments are of great value to us and are intended for the exclusive use of Halliburton.

CUSTOMER SATISFACTION SURVEY

CATEGORY	CUSTOMER SATISFACTION RESPONSE	
Survey Conducted Date	The date the survey was conducted	2/2/2012
Survey Interviewer	The survey interviewer is the person who initiated the survey.	JEREMY YOUNG (HX37077)
Customer Participation	Did the customer participate in this survey? (Y/N)	Yes
Customer Representative	Enter the Customer representative name	KELLY CLAUSSEN
HSE	Was our HSE performance satisfactory? Circle Y or N	Yes
Equipment	Were you satisfied with our Equipment? Circle Y or N	Yes
Personnel	Were you satisfied with our people? Circle Y or N	Yes
Customer Comment	Customer's Comment	

CUSTOMER SIGNATURE

Sales Order #: 9151851	Line Item: 10	Survey Conducted Date: 2/2/2012
Customer: LARAMIE ENERGY II LLC EBUSINESS		Job Type (BOM): CMT SURFACE CASING BOM
Customer Representative: KELLY CLAUSSEN		API / UWI: (leave blank if unknown) 05-077-10104
Well Name: BRUTON		Well Number: 30-06B
Well Type: Development Well	Well Country: United States of America	
H2S Present:	Well State: Colorado	Well County: Mesa

KEY PERFORMANCE INDICATORS

General	
Survey Conducted Date The date the survey was conducted	2/2/2012

Cementing KPI Survey	
Type of Job Select the type of job. (Cementing or Non-Cementing)	0
Select the Maximum Deviation range for this Job What is the highest deviation for the job you just completed? This may not be the maximum well deviation.	Vertical
Total Operating Time (hours) Total Operating Hours Including Rig-up, Pumping, Rig-down. Enter in decimal format.	3
HSE Incident, Accident, Injury HSE Incident, Accident, Injury. This should be recordable incidents only.	No
Was the job purpose achieved? Was the job delivered correctly as per customer agreed design?	Yes
Operating Hours (Pumping Hours) Total number of hours pumping fluid on this job. Enter in decimal format.	1
Customer Non-Productive Rig Time (hrs) Lost time due to Halliburton in the start, execution, or completion of an ordered service or product, or delays in a follow-on service. Enter in decimal format. 0 if none.	0
Type of Rig Classification Job Was Performed Type Of Rig (classification) Job Was Performed On	Drilling Rig (Portable)
Number Of JSAs Performed Number Of Jsas Performed	6
Number of Unplanned Shutdowns Unplanned shutdown is when injection stops for any period of time.	0
Was this a Primary Cement Job (Yes / No)	Yes

Sales Order #: 9151851	Line Item: 10	Survey Conducted Date: 2/2/2012
Customer: LARAMIE ENERGY II LLC EBUSINESS		Job Type (BOM): CMT SURFACE CASING BOM
Customer Representative: KELLY CLAUSSEN		API / UWI: (leave blank if unknown) 05-077-10104
Well Name: BRUTON		Well Number: 30-06B
Well Type: Development Well	Well Country: United States of America	
H2S Present:	Well State: Colorado	Well County: Mesa

Primary Cement Job= Casing job, Liner job, or Tie-back job.	
Did We Run Wiper Plugs? Did We Run Top And Bottom Casing Wiper Plugs?	Top
Mixing Density of Job Stayed in Designed Density Range (0-100%) Density Range defined as +/- .20 ppg. Calculation: Total BBLs cement mixed at designed density divided by total BBLs of cement multiplied by 100	95
Was Automated Density Control Used? Was Automated Density Control (ADC) Used ?	Yes
Pump Rate (percent) of Job Stayed At Designed Pump Rate Pump Rate range defined as +/- 1bbl/min. Calculation: Total BBLs of fluid pumped at the designed rate divided by Total BBLs of fluid pumped, multiplied by 100	95
Nbr of Remedial Sqz Jobs Rqd - Competition Number Of Remedial Squeeze Jobs Required After Primary Job Performed By Competition	0
Nbr of Remedial Plug Jobs Rqd - HES Number Of Remedial Plug Jobs Needed After Primary Plug Pumped By HES	0
Nbr of Remedial Sqz Jobs Rqd - HES Number Of Remedial Squeeze Jobs Required After Primary Job Performed By HES	0