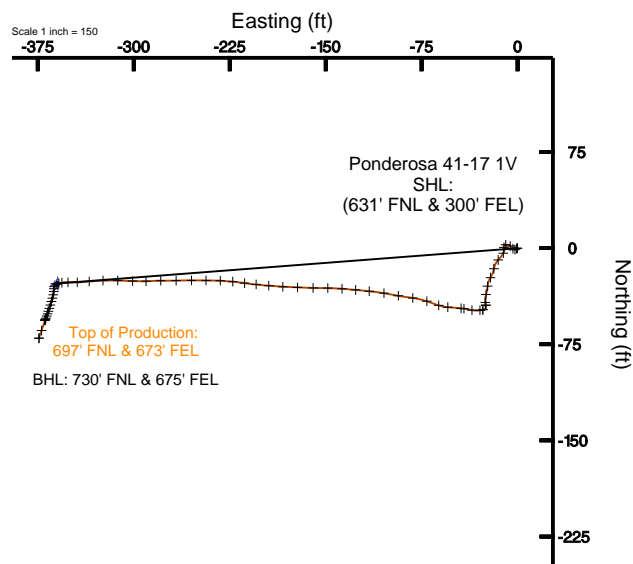
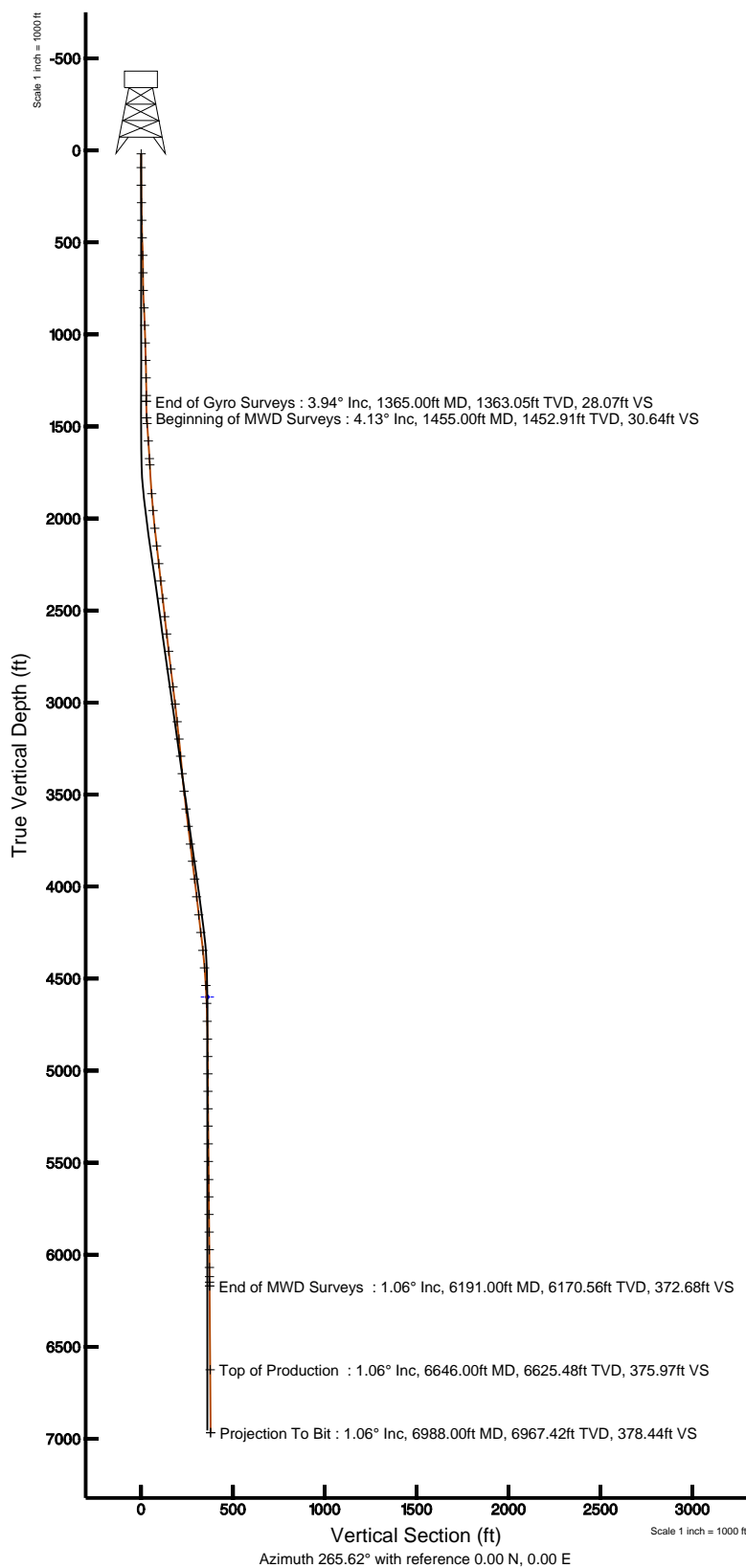




ULTRA RESOURCES, INC

Location:	PA	Slot:	Ponderosa 41-17 1V (631' FNL & 300' FEL)
Field:	EL Paso Country (Nad 83)	Well:	Ponderosa 41-17 1V
Facility:	Sec.17-T14S-R64W	Wellbore:	Ponderosa 41-17 1V PWB





Actual Wellpath Report

Ponderosa 41-17 1V AWP

Page 1 of 4



REFERENCE WELLPATH IDENTIFICATION			
Operator	ULTRA RESOURCES, INC	Slot	Ponderosa 41-17 1V (631' FNL & 300' FEL)
Area	PA	Well	Ponderosa 41-17 1V
Field	EL Paso Country (Nad 83)	Wellbore	Ponderosa 41-17 1V AWB
Facility	Sec.17-T14S-R64W		

REPORT SETUP INFORMATION			
Projection System	NAD83 / Lambert Colorado State Planes, Central Zone (502), US feet	Software System	WellArchitect® 2.0
North Reference	True	User	Ewilliams
Scale	0.999946	Report Generated	5/23/2012 at 3:12:24 PM
Convergence at slot	0.58° East	Database/Source file	UltraWellArchitect/Ponderosa_41-17_1V_AWB.xml

WELLPATH LOCATION						
	Local coordinates		Grid coordinates		Geographic coordinates	
	North[ft]	East[ft]	Easting[USft]	Northing[USft]	Latitude	Longitude
Slot Location	-30.39	0.92	3264008.16	1366861.33	38°50'13.040"N	104°34'23.260"W
Facility Reference Pt			3264006.94	1366891.71	38°50'13.340"N	104°34'23.272"W
Field Reference Pt			3270660.16	1360754.62	38°49'12.000"N	104°33'00.000"W

WELLPATH DATUM			
Calculation method	Minimum curvature	Patterson 189 (RT) to Facility Vertical Datum	6523.00ft
Horizontal Reference Pt	Slot	Patterson 189 (RT) to Mean Sea Level	6523.00ft
Vertical Reference Pt	Patterson 189 (RT)	Facility Vertical Datum to Mud Line (Facility)	0.00ft
MD Reference Pt	Patterson 189 (RT)	Section Origin	N 0.00, E 0.00 ft
Field Vertical Reference	Mean Sea Level	Section Azimuth	265.62°



Actual Wellpath Report

Ponderosa 41-17 1V AWP

Page 2 of 4



REFERENCE WELLPATH IDENTIFICATION			
Operator	ULTRA RESOURCES, INC	Slot	Ponderosa 41-17 1V (631' FNL & 300' FEL)
Area	PA	Well	Ponderosa 41-17 1V
Field	EL Paso Country (Nad 83)	Wellbore	Ponderosa 41-17 1V AWB
Facility	Sec.17-T14S-R64W		

WELLPATH DATA (72 stations) † = interpolated/extrapolated station										
MD [ft]	Inclination [°]	Azimuth [°]	TVD [ft]	Vert Sect [ft]	North [ft]	East [ft]	Latitude	Longitude	DLS [°/100ft]	Comments
0.00†	0.000	274.085	0.00	0.00	0.00	0.00	38°50'13.040"N	104°34'23.260"W	0.00	
18.00	0.000	274.085	18.00	0.00	0.00	0.00	38°50'13.040"N	104°34'23.260"W	0.00	
92.80	0.232	274.085	92.80	0.15	0.01	-0.15	38°50'13.040"N	104°34'23.262"W	0.31	
188.20	0.622	223.120	188.20	0.72	-0.35	-0.70	38°50'13.037"N	104°34'23.269"W	0.53	
283.60	1.143	245.445	283.59	2.00	-1.13	-1.92	38°50'13.029"N	104°34'23.284"W	0.64	
379.00	1.647	324.712	378.96	3.59	-0.40	-3.57	38°50'13.036"N	104°34'23.305"W	1.91	
474.40	1.888	307.356	474.32	5.47	1.67	-5.62	38°50'13.057"N	104°34'23.331"W	0.61	
569.80	2.746	271.424	569.65	8.92	2.68	-9.15	38°50'13.066"N	104°34'23.376"W	1.73	
665.20	2.731	156.602	664.99	10.45	0.65	-10.53	38°50'13.046"N	104°34'23.393"W	4.84	
760.60	3.415	209.977	760.27	11.32	-3.90	-11.05	38°50'13.001"N	104°34'23.400"W	2.96	
856.00	4.606	221.986	855.44	15.69	-9.21	-15.03	38°50'12.949"N	104°34'23.450"W	1.52	
951.40	4.808	191.326	950.53	19.55	-15.98	-18.38	38°50'12.882"N	104°34'23.492"W	2.61	
1046.80	4.335	211.482	1045.63	22.74	-22.97	-21.05	38°50'12.813"N	104°34'23.526"W	1.75	
1142.20	4.385	186.455	1140.76	25.54	-29.67	-23.34	38°50'12.747"N	104°34'23.555"W	1.98	
1237.60	3.629	196.503	1235.93	27.30	-36.19	-24.61	38°50'12.682"N	104°34'23.571"W	1.08	
1333.00	3.946	174.705	1331.13	28.32	-42.35	-25.16	38°50'12.621"N	104°34'23.578"W	1.54	
1365.00	3.942	163.423	1363.05	28.07	-44.50	-24.75	38°50'12.600"N	104°34'23.573"W	2.42	End of Gyro Surveys
1455.00	4.130	259.610	1452.91	30.64	-48.06	-27.06	38°50'12.565"N	104°34'23.602"W	6.67	Beginning of MWD Surveys
1486.00	4.130	259.880	1483.83	32.86	-48.45	-29.25	38°50'12.561"N	104°34'23.630"W	0.06	
1581.00	3.690	283.610	1578.61	39.18	-48.34	-35.59	38°50'12.562"N	104°34'23.710"W	1.75	
1677.00	3.870	276.840	1674.41	45.29	-47.22	-41.81	38°50'12.573"N	104°34'23.788"W	0.50	
1711.00	3.870	277.450	1708.33	47.54	-46.94	-44.09	38°50'12.576"N	104°34'23.817"W	0.12	
1868.00	3.780	271.920	1864.98	57.87	-46.08	-54.51	38°50'12.585"N	104°34'23.949"W	0.24	
1960.00	5.280	288.700	1956.69	64.78	-44.62	-61.56	38°50'12.599"N	104°34'24.038"W	2.16	
2057.00	6.420	289.140	2053.19	73.86	-41.41	-70.91	38°50'12.631"N	104°34'24.156"W	1.18	
2153.00	7.120	277.720	2148.52	84.60	-38.85	-81.87	38°50'12.656"N	104°34'24.295"W	1.58	
2250.00	6.420	279.920	2244.84	95.73	-37.11	-93.17	38°50'12.673"N	104°34'24.437"W	0.77	
2345.00	7.300	279.830	2339.16	106.73	-35.16	-104.35	38°50'12.692"N	104°34'24.579"W	0.93	
2441.00	6.600	275.700	2434.46	118.07	-33.57	-115.85	38°50'12.708"N	104°34'24.724"W	0.90	
2540.00	5.890	275.080	2532.87	128.69	-32.56	-126.57	38°50'12.718"N	104°34'24.860"W	0.72	



Actual Wellpath Report

Ponderosa 41-17 1V AWP

Page 3 of 4



REFERENCE WELLPATH IDENTIFICATION			
Operator	ULTRA RESOURCES, INC	Slot	Ponderosa 41-17 1V (631' FNL & 300' FEL)
Area	PA	Well	Ponderosa 41-17 1V
Field	EL Paso Country (Nad 83)	Wellbore	Ponderosa 41-17 1V AWB
Facility	Sec.17-T14S-R64W		

WELLPATH DATA (72 stations)										
MD [ft]	Inclination [°]	Azimuth [°]	TVD [ft]	Vert Sect [ft]	North [ft]	East [ft]	Latitude	Longitude	DLS [°/100ft]	Comments
2635.00	6.950	274.550	2627.27	139.17	-31.67	-137.16	38°50'12.727"N	104°34'24.993"W	1.12	
2730.00	6.600	271.220	2721.61	150.29	-31.10	-148.34	38°50'12.733"N	104°34'25.135"W	0.55	
2827.00	6.950	269.670	2817.93	161.69	-31.01	-159.79	38°50'12.733"N	104°34'25.279"W	0.41	
2925.00	7.390	273.760	2915.17	173.84	-30.63	-172.00	38°50'12.737"N	104°34'25.434"W	0.69	
3019.00	6.600	271.390	3008.47	185.20	-30.11	-183.44	38°50'12.742"N	104°34'25.578"W	0.89	
3115.00	6.600	277.450	3103.83	196.09	-29.26	-194.42	38°50'12.751"N	104°34'25.717"W	0.73	
3210.00	5.450	273.410	3198.31	205.90	-28.28	-204.34	38°50'12.760"N	104°34'25.842"W	1.29	
3304.00	5.720	278.860	3291.86	214.89	-27.29	-213.43	38°50'12.770"N	104°34'25.957"W	0.63	
3399.00	5.450	275.960	3386.41	223.93	-26.10	-222.59	38°50'12.782"N	104°34'26.073"W	0.41	
3495.00	6.330	272.530	3481.90	233.67	-25.39	-232.41	38°50'12.789"N	104°34'26.197"W	0.99	
3592.00	6.860	269.900	3578.26	244.76	-25.16	-243.55	38°50'12.791"N	104°34'26.338"W	0.63	
3687.00	6.860	270.070	3672.58	256.07	-25.17	-254.89	38°50'12.791"N	104°34'26.481"W	0.02	
3784.00	7.390	269.020	3768.83	268.07	-25.27	-266.92	38°50'12.790"N	104°34'26.633"W	0.56	
3878.00	7.300	269.550	3862.06	280.07	-25.42	-278.94	38°50'12.789"N	104°34'26.785"W	0.12	
3976.00	6.160	266.910	3959.38	291.54	-25.75	-290.42	38°50'12.785"N	104°34'26.930"W	1.21	
4073.00	6.330	274.110	4055.81	302.03	-25.65	-300.95	38°50'12.786"N	104°34'27.063"W	0.83	
4172.00	7.210	270.340	4154.12	313.62	-25.22	-312.60	38°50'12.791"N	104°34'27.211"W	1.00	
4268.00	6.510	269.020	4249.43	325.05	-25.28	-324.07	38°50'12.790"N	104°34'27.356"W	0.75	
4366.00	6.240	263.190	4346.82	335.92	-26.00	-334.91	38°50'12.783"N	104°34'27.493"W	0.72	
4461.00	5.010	269.370	4441.37	345.22	-26.66	-344.19	38°50'12.776"N	104°34'27.610"W	1.44	
4557.00	3.690	270.950	4537.09	352.48	-26.66	-351.47	38°50'12.777"N	104°34'27.702"W	1.38	
4655.00	1.930	254.870	4634.97	357.24	-27.03	-356.21	38°50'12.773"N	104°34'27.762"W	1.95	
4752.00	0.970	263.390	4731.93	359.66	-27.55	-358.61	38°50'12.768"N	104°34'27.792"W	1.01	
4849.00	1.140	242.910	4828.92	361.37	-28.09	-360.28	38°50'12.762"N	104°34'27.813"W	0.42	
4944.00	0.790	231.310	4923.91	362.79	-28.93	-361.63	38°50'12.754"N	104°34'27.830"W	0.42	
5038.00	0.880	193.260	5017.90	363.54	-30.04	-362.31	38°50'12.743"N	104°34'27.839"W	0.59	
5133.00	1.140	178.670	5112.88	363.81	-31.69	-362.45	38°50'12.727"N	104°34'27.841"W	0.38	
5228.00	1.490	186.930	5207.86	364.11	-33.86	-362.58	38°50'12.705"N	104°34'27.842"W	0.42	
5322.00	1.580	192.820	5301.82	364.73	-36.34	-363.01	38°50'12.681"N	104°34'27.848"W	0.19	
5418.00	1.670	195.360	5397.78	365.59	-38.98	-363.68	38°50'12.655"N	104°34'27.856"W	0.12	



Actual Wellpath Report

Ponderosa 41-17 1V AWP

Page 4 of 4



REFERENCE WELLPATH IDENTIFICATION			
Operator	ULTRA RESOURCES, INC	Slot	Ponderosa 41-17 1V (631' FNL & 300' FEL)
Area	PA	Well	Ponderosa 41-17 1V
Field	EL Paso Country (Nad 83)	Wellbore	Ponderosa 41-17 1V AWB
Facility	Sec.17-T14S-R64W		

WELLPATH DATA (72 stations) † = interpolated/extrapolated station										
MD [ft]	Inclination [°]	Azimuth [°]	TVD [ft]	Vert Sect [ft]	North [ft]	East [ft]	Latitude	Longitude	DLS [°/100ft]	Comments
5514.00	1.670	196.330	5493.74	366.56	-41.67	-364.44	38°50'12.628"N	104°34'27.866"W	0.03	
5612.00	1.670	198.620	5591.70	367.62	-44.39	-365.30	38°50'12.601"N	104°34'27.877"W	0.07	
5706.00	1.580	196.240	5685.66	368.61	-46.94	-366.10	38°50'12.576"N	104°34'27.887"W	0.12	
5802.00	1.320	199.410	5781.63	369.52	-49.25	-366.84	38°50'12.553"N	104°34'27.896"W	0.28	
5898.00	1.140	197.120	5877.61	370.32	-51.20	-367.48	38°50'12.534"N	104°34'27.904"W	0.19	
5994.00	1.140	198.270	5973.59	371.04	-53.02	-368.07	38°50'12.516"N	104°34'27.912"W	0.02	
6090.00	0.970	207.850	6069.58	371.84	-54.65	-368.74	38°50'12.500"N	104°34'27.920"W	0.25	
6140.00	0.970	202.400	6119.57	372.26	-55.41	-369.10	38°50'12.492"N	104°34'27.925"W	0.18	
6170.00	1.140	203.540	6149.56	372.51	-55.92	-369.32	38°50'12.487"N	104°34'27.927"W	0.57	
6191.00	1.060	198.620	6170.56	372.68	-56.30	-369.46	38°50'12.484"N	104°34'27.929"W	0.59	End of MWD Surveys
6646.00†	1.060	198.620	6625.48	375.97	-64.28	-372.15	38°50'12.405"N	104°34'27.963"W	0.00	Top of Production
6988.00	1.060	198.620	6967.42	378.44	-70.27	-374.17	38°50'12.345"N	104°34'27.989"W	0.00	Projection To Bit

TARGETS									
Name	MD [ft]	TVD [ft]	North [ft]	East [ft]	Grid East [srv ft]	Grid North [srv ft]	Latitude	Longitude	Shape
Ponderosa 41-17 1V Target On Plat (660' FNL & 660' FEL)		4600.00	-27.52	-359.56	3263648.93	1366830.15	38°50'12.768"N	104°34'27.804"W	point

WELLPATH COMPOSITION Ref Wellbore: Ponderosa 41-17 1V AWB Ref Wellpath: Ponderosa 41-17 1V AWP				
Start MD [ft]	End MD [ft]	Positional Uncertainty Model	Log Name/Comment	Wellbore
18.00	1365.00	Gyrodata standard - Continuous gyro	GYRO	Ponderosa 41-17 1V AWB
1365.00	6191.00	NaviTrak (Standard)	MWD	Ponderosa 41-17 1V AWB
6191.00	6988.00	Blind Drilling (std)	Projection to bit	Ponderosa 41-17 1V AWB