

ULTRA RESOURCES INC EBUSINESS
DO NOT MAIL-304 INVERNESS WAY S
ENGLEWOOD, Colorado

Ponderosa
Ponderosa 41-17 1V

PATTERSON/189

Post Job Summary

Cement Surface Casing

Date Prepared: 04/17/12
Version: 1

Service Supervisor: SALINAS, JOSE

Submitted by: MCKAY, ADAM

HALLIBURTON

Wellbore Geometry

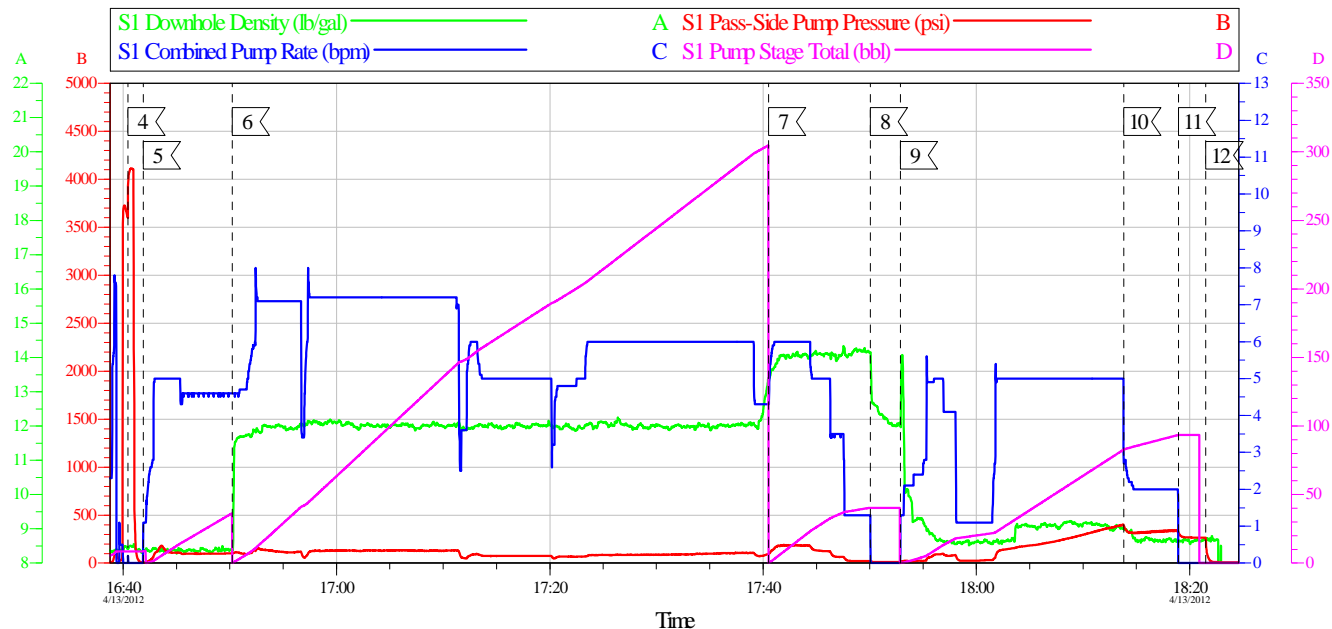
Job Tubulars					MD		TVD		Excess	Shoe Joint Length
Type	Description	Size in	ID in	Wt lbm/ft	Top ft	Bottom ft	Top ft	Bottom ft	%	ft
Open Hole Section	Open Hole		12.250		0.00	1,400.00			150.00	
Casing	Surface Casing	8.63	8.097	24.00	0.00	1,400.00			0.00	

Pumping Schedule

Stage /Plug #	Fluid #	Fluid Type	Fluid Name	Surface Density lbm/gal	Avg Rate bbl/min	Surface Volume	Downhole Volume
1	1	Spacer	Fresh Water	8.34	0.00	30.0 bbl	30.0 bbl
1	2	Cement Slurry	Trinidad Surface Blend 12#	12.00	5.00	500.0 sacks	500.0 sacks
1	3	Cement Slurry	Trinidad Surface Blend 14#	14.00	5.00	105.0 sacks	105.0 sacks
1	4	Cement Slurry	Top Out Cement 15.8#	15.80	1.00	0 sacks	0 sacks

Data Acquisition

ULTRA RESOURCES
PONDEROSA 41-18 IV 8 5/8 SURFACE
SO# 9437462



Global Event Log					
Intersection	SPPP	Intersection	SPPP	Intersection	SPPP
4 Test Lines	16:40:26 3701	5 Pump Spacer 1	16:41:52 3.000	6 Pump Lead Cement	16:50:13 101.0
7 Pump Tail Cement	17:40:31 93.01	8 Drop Top Plug	17:50:04 21.16	9 Pump Displacement	17:52:52 10.24
10 Slow Rate Down	18:13:49 392.4	11 Shutdown	18:18:57 320.5	12 Release Casing Pressure	18:21:31 260.5

Customer:	Job Date: 13-Apr-2012	Sales Order #: 0
Well Description:	Job Type:	ADC Used:
Company Rep:	Cement Supervisor:	Elite #:

HALLIBURTON
OptiCemv64.10
13-Apr-12 18:31

Service Supervisor Reports

Job Log

Date/Time	Chart #	Activity Code	Pump Rate	Cum Vol	Pump		Pressure (psig)	Comments
04/13/2012 10:00		Arrive at Location from Service Center						
04/13/2012 16:10		Pre-Job Safety Meeting						
04/13/2012 16:40		Test Lines	2	2			3000.0	TEST LINES WIYH WATER TO 3000 PSI
04/13/2012 16:41		Pump Spacer 1	6	30			100.0	PUMP 30 BBLS OF WATER SPACER WITH RED DYE
04/13/2012 16:50		Pump Lead Cement	6	280			101.0	PUMP 500 SKS OF TRINIDAD SURFACE BLEND @ 12.0 PPG (277.9 BBLS)
04/13/2012 17:40		Pump Tail Cement	6	31			93.0	PUMP 105 SKS OF TRINIDAD SURFACE BLEND @ 14.0 PPG (31.0 BBLS)
04/13/2012 17:50		Drop Top Plug	0	0			.0	DROP TOP PLUG
04/13/2012 17:52		Pump Displacement	6	87				PUMP DISPLACEMENT 87 BBLS
04/13/2012 18:13		Other	3	-			250.0	SLOW RATE DOWN TO 3 BPM TO LAND PLUG
04/13/2012 18:18		Other	3	-			325.0	DID NOT BUMP PLUG PER CO.MAN DID NOT PUMP OVER 1/2 BBL
04/13/2012 18:18		Shutdown	0	0			.0	SHUT DOWN
04/13/2012 18:21		Release Casing Pressure	0	0			.0	RELEASE PSI
04/13/2012 18:25		Check Floats	0	0			.0	FLOATS HELD GOOD
04/13/2012 18:30		Pre-Rig Down Safety Meeting						
04/13/2012 18:40		Rig-Down Equipment						
04/13/2012 19:15		Depart Location Safety Meeting						
04/13/2012 19:30		Depart Location for Service Center or Other Site						
04/13/2012 19:31		Other						GOT 72.0 BBLS OF CMT BACK TO SURFACE

HALLIBURTON

The Road to Excellence Starts with Safety

Sold To #: 355636	Ship To #: 2920636	Quote #:	Sales Order #: 9437462
Customer: ULTRA RESOURCES INC EBUSINESS		Customer Rep:	
Well Name: Ponderosa		Well #: 41-17 1V	API/UWI #: 05-041-06067
Field: WILD CAT	City (SAP): COLORADO SPRINGS	County/Parish: El Paso	State: Colorado
Contractor: PATTERSON		Rig/Platform Name/Num: 189	
Job Purpose: Cement Surface Casing			
Well Type: Development Well		Job Type: Cement Surface Casing	
Sales Person: FLING, MATTHEW		Srvc Supervisor: SALINAS, JOSE	MBU ID Emp #: 100319

Job Personnel

HES Emp Name	Exp Hrs	Emp #	HES Emp Name	Exp Hrs	Emp #	HES Emp Name	Exp Hrs	Emp #
IOERGER, TODD A	0.0	485941	OTERI, VAUGHN Steeves	0.0	443828	ROMERO, JOSEPH Michael	0.0	512137
SALINAS, JOSE R	0.0	100319	SEALE, ANDREW W	0.0	511496			

Equipment

HES Unit #	Distance-1 way	HES Unit #	Distance-1 way	HES Unit #	Distance-1 way	HES Unit #	Distance-1 way
10248053C	115 mile	10857080C	115 mile	11605597	115 mile	11633848	115 mile
11645063	115 mile	11667703C	115 mile	5707C	115 mile		

Job Hours

Date	On Location Hours	Operating Hours	Date	On Location Hours	Operating Hours	Date	On Location Hours	Operating Hours
TOTAL	Total is the sum of each column separately							

Job

Formation Name					Date	Time	Time Zone
Formation Depth (MD)	Top		Bottom		Called Out	13 - Apr - 2012	04:30 MST
Form Type		BHST			On Location	13 - Apr - 2012	10:00 MST
Job depth MD	1400. ft	Job Depth TVD	1400. ft		Job Started	13 - Apr - 2012	16:40 MST
Water Depth		Wk Ht Above Floor	5. ft		Job Completed	13 - Apr - 2012	18:25 MST
Perforation Depth (MD)	From		To		Departed Loc	13 - Apr - 2012	19:30 MST

Well Data

Description	New / Used	Max pressure psig	Size in	ID in	Weight lbm/ft	Thread	Grade	Top MD ft	Bottom MD ft	Top TVD ft	Bottom TVD ft
Open Hole				12.25				.	1400.		
Surface Casing	Unknown		8.625	8.097	24.		J-55	.	1400.		

Tools and Accessories

Type	Size	Qty	Make	Depth	Type	Size	Qty	Make	Depth	Type	Size	Qty	Make
Guide Shoe					Packer					Top Plug			
Float Shoe					Bridge Plug					Bottom Plug			
Float Collar					Retainer					SSR plug set			
Insert Float										Plug Container			
Stage Tool										Centralizers			

Miscellaneous Materials

Gelling Agt		Conc		Surfactant		Conc		Acid Type		Qty		Conc	%
Treatment Fld		Conc		Inhibitor		Conc		Sand Type		Size		Qty	

Fluid Data

Stage/Plug #: 1

HALLIBURTON

Fluid #	Stage Type	Fluid Name	Qty	Qty uom	Mixing Density lbm/gal	Yield ft ³ /sk	Mix Fluid Gal/sk	Rate bbl/min	Total Mix Fluid Gal/sk
1	Fresh Water		30.00	bbl	8.34	.0	.0	.0	
2	Trinidad Surface Blend 12#	SWIFTCEM (TM) SYSTEM (452990)	500.0	sacks	12.	2.56	14.67	5.0	14.67
14.67 Gal		FRESH WATER							
3	Trinidad Surface Blend 14#	SWIFTCEM (TM) SYSTEM (452990)	105.0	sacks	14.	1.66	7.9	5.0	7.9
7.9 Gal		FRESH WATER							
4	Top Out Cement 15.8#	CMT - PREMIUM - CLASS G, 94 LB SK (100003685)		sacks	15.8	1.16	5.01	1.0	5.01
94 lbm		CMT - PREMIUM - CLASS G REG OR TYPE V, BULK (100003685)							
5.01 Gal		FRESH WATER							
Calculated Values		Pressures		Volumes					
Displacement		Shut In: Instant		Lost Returns		Cement Slurry		Pad	
Top Of Cement		5 Min		Cement Returns		Actual Displacement		Treatment	
Frac Gradient		15 Min		Spacers		Load and Breakdown		Total Job	
Rates									
Circulating		Mixing		Displacement		Avg. Job			
Cement Left In Pipe		Amount	0 ft	Reason	Shoe Joint				
Frac Ring # 1 @	ID	Frac ring # 2 @	ID	Frac Ring # 3 @	ID	Frac Ring # 4 @	ID		
The Information Stated Herein Is Correct				Customer Representative Signature					