
WILLIAMS PRODUCTION RMT INC - EBUS

**PA 411-21
Parachute
Garfield County , Colorado**

Cement Surface Casing
18-Apr-2011

Post Job Summary

The Road to Excellence Starts with Safety

Sold To #: 300721		Ship To #: 2847568		Quote #:		Sales Order #: 8091828	
Customer: WILLIAMS PRODUCTION RMT INC - EBUS				Customer Rep: Sons, Bruce			
Well Name: PA			Well #: 411-21			API/UWI #: 05-045-19602	
Field: PARACHUTE		City (SAP): PARACHUTE		County/Parish: Garfield		State: Colorado	
Lat: N 39.511 deg. OR N 39 deg. 30 min. 38.729 secs.				Long: W 108.008 deg. OR W -109 deg. 59 min. 30.75 secs.			
Contractor: Nabors Industries LTD.			Rig/Platform Name/Num: Nabors577				
Job Purpose: Cement Surface Casing							
Well Type: Development Well			Job Type: Cement Surface Casing				
Sales Person: KOHL, KYLE			Srvc Supervisor: ANDREWS, ANTHONY			MBU ID Emp #: 321604	

Job Personnel

HES Emp Name	Exp Hrs	Emp #	HES Emp Name	Exp Hrs	Emp #	HES Emp Name	Exp Hrs	Emp #
ANDREWS, ANTHONY Michael		321604	ARNOLD, EDWARD John		439784	CUNNINGHAM, TANNER Wade		445660
HARDRICK, RAYMOND Frank		391324						

Equipment

HES Unit #	Distance-1 way	HES Unit #	Distance-1 way	HES Unit #	Distance-1 way	HES Unit #	Distance-1 way

Job Hours

Date	On Location Hours	Operating Hours	Date	On Location Hours	Operating Hours	Date	On Location Hours	Operating Hours
4/18/11	3.5	2.5	4/19/11	1.5	1			
TOTAL		Total is the sum of each column separately						

Job

Formation Name					Job Times			
Formation Depth (MD)	Top	Bottom			Called Out	Date	Time	Time Zone
Form Type	BHST				On Location	18 - Apr - 2011	16:30	MST
Job depth MD	1128. ft		Job Depth TVD	1128. ft	Job Started	18 - Apr - 2011	20:30	MST
Water Depth	Wk Ht Above Floor		4. ft		Job Completed	18 - Apr - 2011	23:04	MST
Perforation Depth (MD)	From	To			Departed Loc	19 - Apr - 2011	23:44	MST

Well Data

Description	New / Used	Max pressure psig	Size in	ID in	Weight lbm/ft	Thread	Grade	Top MD ft	Bottom MD ft	Top TVD ft	Bottom TVD ft
13 1/2" Open Hole				13.5				.	1100.		
9 5/8" Surface Casing	New		9.625	9.001	32.3		H-40	.	1150.		

Sales/Rental/3rd Party (HES)

Description	Qty	Qty uom	Depth	Supplier
PLUG,CMTG,TOP,9 5/8,HWE,8.16 MIN/9.06 MA	1	EA		

Tools and Accessories

Type	Size	Qty	Make	Depth	Type	Size	Qty	Make	Depth	Type	Size	Qty	Make
Guide Shoe					Packer					Top Plug			
Float Shoe					Bridge Plug					Bottom Plug			
Float Collar					Retainer					SSR plug set			
Insert Float										Plug Container			
Stage Tool										Centralizers			

Miscellaneous Materials

Gelling Agt	Conc	Surfactant	Conc	Acid Type	Qty	Conc	%
Treatment Fld	Conc	Inhibitor	Conc	Sand Type	Size	Qty	

Fluid Data									
Stage/Plug #: 1									
Fluid #	Stage Type	Fluid Name	Qty	Qty uom	Mixing Density lbm/gal	Yield ft ³ /sk	Mix Fluid Gal/sk	Rate bbl/min	Total Mix Fluid Gal/sk
1	Water Spacer		20	bbl	8.4	.0	.0	.0	
2	VersaCem Tail Cement	VERSACEM (TM) SYSTEM (452010)	345	sacks	12.8	2.11	11.75		11.75
	11.75 Gal	FRESH WATER							
3	Displacement Fluid		85.3	bbl	8.4	.0	.0	.0	
Calculated Values		Pressures		Volumes					
Displacement	85.3	Shut In: Instant		Lost Returns	N	Cement Slurry	129.6	Pad	
Top Of Cement	SURFACE	5 Min		Cement Returns	20	Actual Displacement	85.3	Treatment	
Frac Gradient		15 Min		Spacers	20	Load and Breakdown		Total Job	234.9
Rates									
Circulating	RIG	Mixing	8	Displacement	10-2	Avg. Job	8		
Cement Left In Pipe	Amount	43.95 ft	Reason	Shoe Joint					
Frac Ring # 1 @	ID	Frac ring # 2 @	ID	Frac Ring # 3 @	ID	Frac Ring # 4 @	ID		
The Information Stated Herein Is Correct				Customer Representative Signature					

The Road to Excellence Starts with Safety

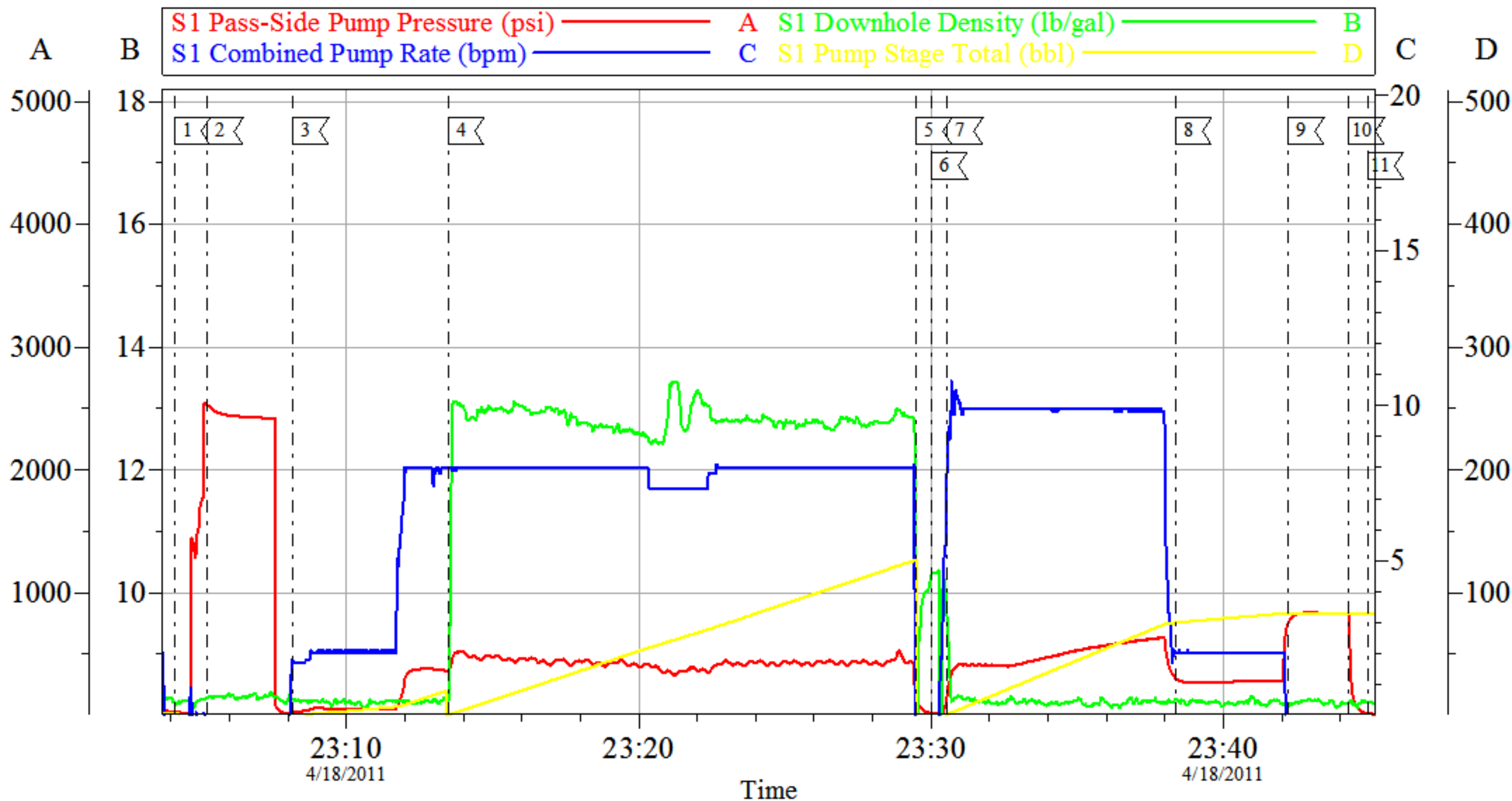
Sold To #: 300721	Ship To #: 2847568	Quote #:	Sales Order #: 8091828
Customer: WILLIAMS PRODUCTION RMT INC - EBUS		Customer Rep: Sons, Bruce	
Well Name: PA	Well #: 411-21	API/UWI #: 05-045-19602	
Field: PARACHUTE	City (SAP): PARACHUTE	County/Parish: Garfield	State: Colorado
Legal Description:			
Lat: N 39.511 deg. OR N 39 deg. 30 min. 38.729 secs.		Long: W 108.008 deg. OR W -109 deg. 59 min. 30.75 secs.	
Contractor: Nabors Industries LTD.		Rig/Platform Name/Num: Nabors577	
Job Purpose: Cement Surface Casing			Ticket Amount:
Well Type: Development Well		Job Type: Cement Surface Casing	
Sales Person: KOHL, KYLE		Srvc Supervisor: ANDREWS, ANTHONY	MBU ID Emp #: 321604

Activity Description	Date/Time	Cht #	Rate bbl/min	Volume bbl		Pressure psig		Comments
				Stage	Total	Tubing	Casing	
Call Out	04/18/2011 16:30							
Pre-Convoy Safety Meeting	04/18/2011 18:00							
Crew Leave Yard	04/18/2011 18:30							
Arrive At Loc	04/18/2011 20:30							
Assessment Of Location Safety Meeting	04/18/2011 21:10							
Other	04/18/2011 21:15							SPOT EQUIPMENT
Pre-Rig Up Safety Meeting	04/18/2011 21:25							
Rig-Up Equipment	04/18/2011 21:45							
Pre-Job Safety Meeting	04/18/2011 22:30							
Start Job	04/18/2011 23:04							TD: 1143 TP: 1127.56 SJ: 43.95 MW; 10 PPG 9 5/8" 32.3#/FT CSG IN 13 1/2" OH
Test Lines	04/18/2011 23:05							2500 PSI TEST
Pump Spacer	04/18/2011 23:08		4	20			275.0	FRESH H2O SPACER
Pump Tail Cement	04/18/2011 23:13		8	129.6			362.0	345 SKS @ 12.8 PPG 2.11 YLD 11.75 GAL/SK H2O
Shutdown	04/18/2011 23:29							
Drop Plug	04/18/2011 23:30							PLUG AWAY

Activity Description	Date/Time	Cht #	Rate bbl/min	Volume bbl		Pressure psig		Comments
				Stage	Total	Tubing	Casing	
Pump Displacement	04/18/2011 23:30		10		85.3		161.0	FRESH H2O DISPLACEMENT
Slow Rate	04/18/2011 23:38		2	75			305.0	
Bump Plug	04/18/2011 23:42		2	85.3			754.0	PLUG BUMPED AT CALCULATED DISPLACEMENT
Check Floats	04/18/2011 23:44							
End Job	04/18/2011 23:44							
Post-Job Safety Meeting (Pre Rig-Down)	04/19/2011 00:00							GOOD CIRCULATION THROUGHTOUT JOB. PIPE WAS LEFT STATIC THROUGHTOUT JOB. PLUG BUMPED AT CALCULATED DISPLACEMENT. FLOATS HELD. NO ADD HOURS CHARGED.
Rig-Down Equipment	04/19/2011 00:15							CIRCULATED 20 BBLS CEMENT TO SURFACE
Pre-Convoy Safety Meeting	04/19/2011 01:25							
Crew Leave Location	04/19/2011 01:30							THANK YOU FOR CHOOSING HALLIBURTON CEMENTING OF GRAND JUNCTION, COLORADO ANTHONY ANDREWS AND CREW

NABORS 577 - WILLIAMS

9 5/8" SURFACE



Local Event Log

Intersection	SPPP	Intersection	SPPP	Intersection	SPPP
1 START JOB	23:04:06 27.00	2 TEST LINES	23:05:14 2530	3 PUMP SPACER	23:08:10 20.82
4 PUMP TAIL CEMENT	23:13:28 362.8	5 SHUTDOWN	23:29:29 152.8	6 DROP PLUG	23:30:01 19.67
7 PUMP DISPLACEMENT	23:30:32 161.0	8 SLOW RATE	23:38:22 305.5	9 BUMP PLUG	23:42:13 754.2
10 CHECK FLOATS	23:44:17 833.0	11 END JOB	23:44:56 18.00		

Customer: WILLIAMS
Well #: PA 411-21
Customer Rep: BRUCE SONS

Job Date: 18-Apr-2011
Job Type: SURFACE
Pump Truck: ELITE 2/ TANNER CUNNINGHAM

Sales Order #: 8091828
ADC Used: YES
Supervisor: ANTHONY ANDREWS

OptiCem v6.3.4
19-Apr-11 00:04