

---

**WILLIAMS PRODUCTION RMT INC - EBUS**

---

**PA 432-7  
Parachute  
Garfield County , Colorado**

**Cement Surface Casing**  
**28-Jul-2011**

**Post Job Summary**

## The Road to Excellence Starts with Safety

Sold To #: 300721	Ship To #: 2865779	Quote #:	Sales Order #: 8320422
Customer: WILLIAMS PRODUCTION RMT INC - EBUS	Customer Rep: Towers, Ron		
Well Name: PA	Well #: 432-7	API/UWI #: 05-045-20154	
Field: Parachute	City (SAP): PARACHUTE	County/Parish: Garfield	State: Colorado
Lat: N 39.457 deg. OR N 39 deg. 27 min. 23.526 secs.	Long: W 108.044 deg. OR W -109 deg. 57 min. 22.41 secs.		
Contractor: Nabors Industries LTD.	Rig/Platform Name/Num: Nabors 574		
Job Purpose: Cement Surface Casing			
Well Type: Development Well	Job Type: Cement Surface Casing		
Sales Person: KOHL, KYLE	Srv Supervisor: MUHLESTEIN, RYAN	MBU ID Emp #: 453609	

## Job Personnel

HES Emp Name	Exp Hrs	Emp #	HES Emp Name	Exp Hrs	Emp #	HES Emp Name	Exp Hrs	Emp #
BROWN, TRAVIS A	9	396848	DEUSSEN, EDWARD Eric	9	485182	MUHLESTEIN, RYAN Herrick	9	453609
SINGLETON, AUSTIN W	9	487406						

## Equipment

HES Unit #	Distance-1 way	HES Unit #	Distance-1 way	HES Unit #	Distance-1 way	HES Unit #	Distance-1 way
10248057	60 mile	10867423	60 mile	10897887	60 mile	10951244	60 mile
11360871	60 mile	11542767	60 mile				

## Job Hours

Date	On Location Hours	Operating Hours	Date	On Location Hours	Operating Hours	Date	On Location Hours	Operating Hours
7/28/11	9	3						

TOTAL	Total is the sum of each column separately							
-------	--	--	--	--	--	--	--	--

## Job

JOB NAME						JOB TIME			
Formation Name							Date	Time	Time Zone
Formation Depth (MD)	Top			Bottom		Called Out	28 - Jul - 2011	05:00	MST
Form Type				BHST		On Location	28 - Jul - 2011	09:00	MST
Job depth MD	18550. ft			Job Depth TVD	1855. ft	Job Started	28 - Jul - 2011	15:36	MST
Water Depth				Wk Ht Above Floor	4. ft	Job Completed	28 - Jul - 2011	16:39	MST
Perforation Depth (MD)	From			To		Departed Loc	28 - Jul - 2011	18:00	MST

## Well Data

Description	New / Used	Max pressure psig	Size in	ID in	Weight lbm/ft	Thread	Grade	Top MD ft	Bottom MD ft	Top TVD ft	Bottom TVD ft
13 1/2" Open Hole				13.5				.	1855.		
9 5/8" Surface Casing	Unknown		9.625	9.001	32.3		H-40	.	1840.		

Sales/Rental/3<sup>rd</sup> Party (HES)

Description	Qty	Qty uom	Depth	Supplier
PLUG,CMTG,TOP,9 5/8,HWE,8.16 MIN/9.06 MA	1	EA		HES

## Tools and Accessories

Type	Size	Qty	Make	Depth	Type	Size	Qty	Make	Depth	Type	Size	Qty	Make
Guide Shoe					Packer					Top Plug	9.625	1	HES
Float Shoe					Bridge Plug					Bottom Plug			
Float Collar					Retainer					SSR plug set			
Insert Float										Plug Container	9.625	1	HES
Stage Tool										Centralizers			

## Miscellaneous Materials

Gelling Agt	Conc	Surfactant	Conc	Acid Type	Qty	Conc	%
Treatment Fld	Conc	Inhibitor	Conc	Sand Type	Size	Qty	

Fluid Data									
Stage/Plug #: 1									
Fluid #	Stage Type	Fluid Name	Qty	Qty uom	Mixing Density lbm/gal	Yield ft <sup>3</sup> /sk	Mix Fluid Gal/sk	Rate bbl/min	Total Mix Fluid Gal/sk
1	Water Spacer		20.00	bbl	8.33	.0	.0	3.0	
2	VersaCem Lead	VERSACEM (TM) SYSTEM (452010)	300.0	sacks	12.3	2.38	13.75	8.0	13.75
		13.75 Gal FRESH WATER							
3	VersaCem Tail	VERSACEM (TM) SYSTEM (452010)	160.0	sacks	12.8	2.11	11.75	8.0	11.75
		11.75 Gal FRESH WATER							
4	Displacement Fluid		141.00	bbl	8.34	.0	.0	10.0	
Calculated Values		Pressures		Volumes					
Displacement	141.3	Shut In: Instant		Lost Returns	0	Cement Slurry	1187.3	Pad	
Top Of Cement	SURF	5 Min		Cement Returns	32	Actual Displacement	141.3	Treatment	
Frac Gradient		15 Min		Spacers	20	Load and Breakdown		Total Job	348.6
Rates									
Circulating	16	Mixing	8	Displacement	10	Avg. Job	9		
Cement Left In Pipe	Amount	44 ft	Reason	Shoe Joint					
Frac Ring # 1 @	ID	Frac ring # 2 @	ID	Frac Ring # 3 @	ID	Frac Ring # 4 @	ID		
The Information Stated Herein Is Correct				Customer Representative Signature					

*The Road to Excellence Starts with Safety*

<b>Sold To #:</b> 300721		<b>Ship To #:</b> 2865779		<b>Quote #:</b>		<b>Sales Order #:</b> 8320422	
<b>Customer:</b> WILLIAMS PRODUCTION RMT INC - EBUS				<b>Customer Rep:</b> Towers, Ron			
<b>Well Name:</b> PA			<b>Well #:</b> 432-7			<b>API/UWI #:</b> 05-045-20154	
<b>Field:</b> Parachute		<b>City (SAP):</b> PARACHUTE		<b>County/Parish:</b> Garfield		<b>State:</b> Colorado	
<b>Legal Description:</b>							
<b>Lat:</b> N 39.457 deg. OR N 39 deg. 27 min. 23.526 secs.				<b>Long:</b> W 108.044 deg. OR W -109 deg. 57 min. 22.41 secs.			
<b>Contractor:</b> Nabors Industries LTD.			<b>Rig/Platform Name/Num:</b> Nabors 574				
<b>Job Purpose:</b> Cement Surface Casing						<b>Ticket Amount:</b>	
<b>Well Type:</b> Development Well			<b>Job Type:</b> Cement Surface Casing				
<b>Sales Person:</b> KOHL, KYLE			<b>Srvc Supervisor:</b> MUHLESTEIN, RYAN			<b>MBU ID Emp #:</b> 453609	

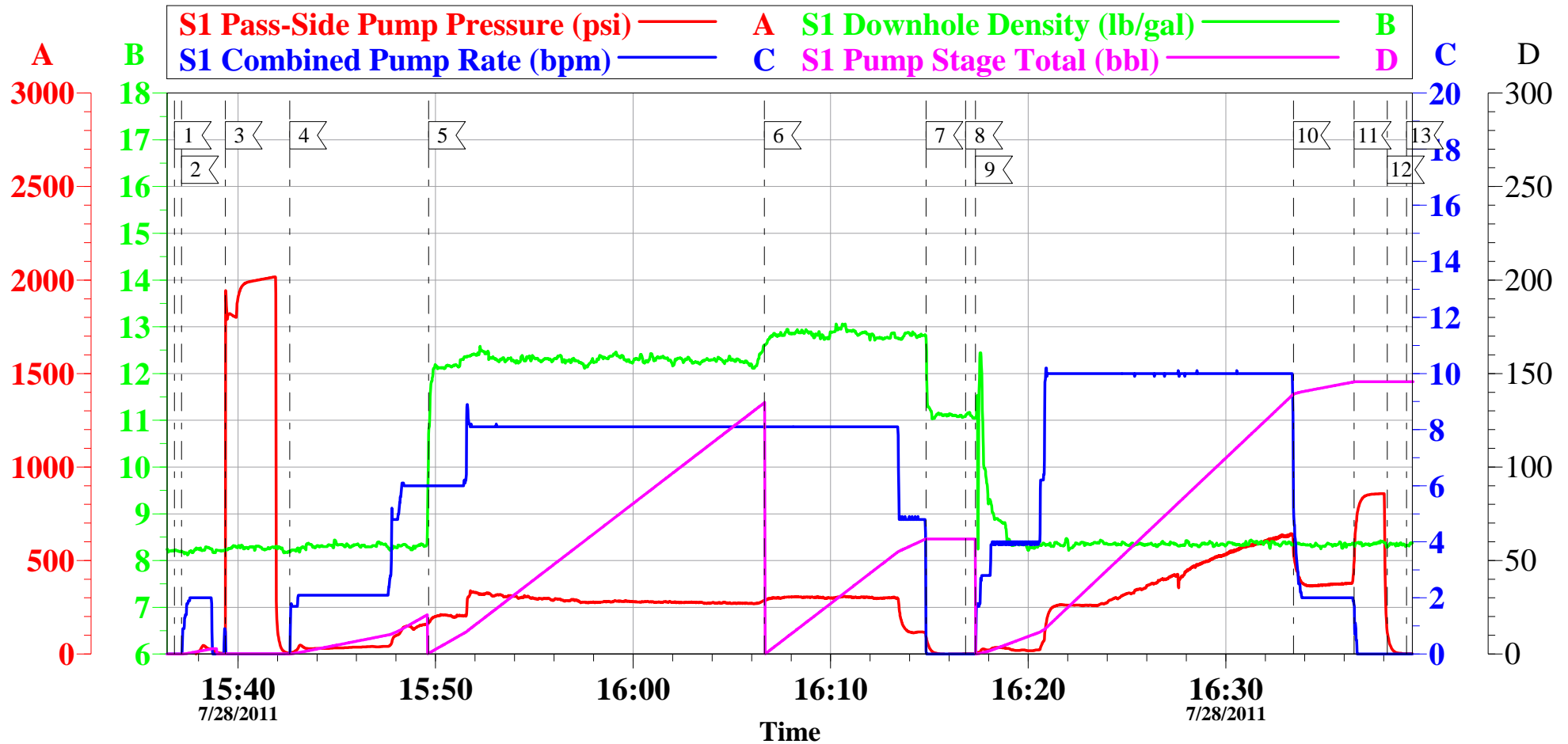
Activity Description	Date/Time	Cht #	Rate bbl/min	Volume bbl		Pressure psig		Comments
				Stage	Total	Tubing	Casing	
Call Out	07/28/2011 05:00							
Pre-Convoy Safety Meeting	07/28/2011 07:00							WITH ALL HES PERSONNEL SAFE DRIVING PRACTICES AND TRAVEL ROUTE REVIEWED
Arrive at Location from Service Center	07/28/2011 09:00							RIG PULLING DRILL PIPE
Assessment Of Location Safety Meeting	07/28/2011 14:00							WITH ALL HES PERSONNEL
Pre-Rig Up Safety Meeting	07/28/2011 14:15							WITH ALL HES PERSONNEL
Rig-Up Equipment	07/28/2011 14:30							1 ELITE HT 400 PUMP, 1 660 BULK TRUCK, 1 BODY LOAD BULK TRANSPORT, 1 F-450 PICK-UP, 1 PLUG CONTAINER, 2" IRON TO STAND PIPE
Circulate Well	07/28/2011 14:31							CASING ON BOTTOM, RIG CIRCULATES USING HES SWAGE AND IRON, CIRC. 1 HR, 16 BPM, 682 PSI. MUD REPORT 10.9 PPG PV 15, YP 11.
Pre-Job Safety Meeting	07/28/2011 15:20							WITH ALL HES PERSONNEL, RIG CREW AND CO REP
Start Job	07/28/2011 15:36							TD 1855', TP 1840', FC 1796', SJ 44', OH 13.5", SURFACE CASING 9.625" 32.3# H-40.
Pump Water	07/28/2011 15:37		2	2			60.0	FRESH H2O, TO PRIME LINES

Activity Description	Date/Time	Cht #	Rate bbl/min	Volume bbl		Pressure psig		Comments
				Stage	Total	Tubing	Casing	
Test Lines	07/28/2011 15:39							HELD 2025 PSI MIN NO LEAKS
Pump Spacer 1	07/28/2011 15:42		3	20			175.0	FRESH H2O
Pump Lead Cement	07/28/2011 15:49		8	127.2			350.0	300 SKS 12.3 PPG 2.38 FT3/SK 13.75 GAL/SK WEIGHED VERIFIED VIA MUD SCALES WET AND DRY SAMPLES SUBMITTED
Pump Tail Cement	07/28/2011 16:06		8	60.1			320.0	160 SKS 12.8 PPG 2.11 FT3/SK 11.75 GAL/SK WEIGHED VERIFIED VIA MUD SCALES WET AND DRY SAMPLES SUBMITTED
Shutdown	07/28/2011 16:14							WASH UP ON TOP OF PLUG
Drop Top Plug	07/28/2011 16:16							VERIFY PLUG LAUNCHED
Pump Displacement	07/28/2011 16:17		10	141.3			650.0	CMT RETURNS 109 BBLS INTO DIS, 32 BBLS CMT TO SURFACE
Slow Rate	07/28/2011 16:33		2	131			395.0	SLOW RATE 10 BBLS PRIOR TO CALCULATED DISPLACEMENT
Bump Plug	07/28/2011 16:36		2	141.3			855.0	BUMP PLUG AT 390 PSI HOLD 2 MINS
Check Floats	07/28/2011 16:38							FLOATS HOLDING, 1 BBL BACK, GOOD RETURNS THROUGHOUT JOB
End Job	07/28/2011 16:39							NO ADD HOURS OR DERRICK CHARGE. 100 LBS SUGAR USED
Pre-Rig Down Safety Meeting	07/28/2011 16:45							WITH ALL HES PERSONNEL
Rig-Down Equipment	07/28/2011 17:00							AREA FREE FROM DEBRIS
Pre-Convoy Safety Meeting	07/28/2011 17:45							WITH ALL HES PERSONNEL

Activity Description	Date/Time	Cht #	Rate bbl/ min	Volume bbl		Pressure psig		Comments
				Stage	Total	Tubing	Casing	
Crew Leave Location	07/28/2011 18:00							THANK YOU FOR USING HALLIBURTON CEMENT DEPARTMENT. RYAN MUHLESTEIN AND CREW

# WILLIAMS

## PA 432-7 9 5/8" SURFACE CASING



### Local Event Log

1 START JOB	15:36:47	2 FILL LINES	15:37:08	3 TEST LINES	15:39:21
4 PUMP H2O SPACER	15:42:37	5 PUMP LEAD CMT	15:49:39	6 PUMP TAIL CMT	16:06:38
7 SHUT DOWN	16:14:50	8 DROP PLUG	16:16:50	9 PUMP DISPLACEMENT	16:17:20
10 SLOW RATE	16:33:25	11 BUMP PLUG	16:36:30	12 CHECK FLOATS	16:38:11
13 END JOB	16:39:09				

Customer: WILLIAMS  
Well Description: PA 432-7  
Customer Rep: RON TOWERS

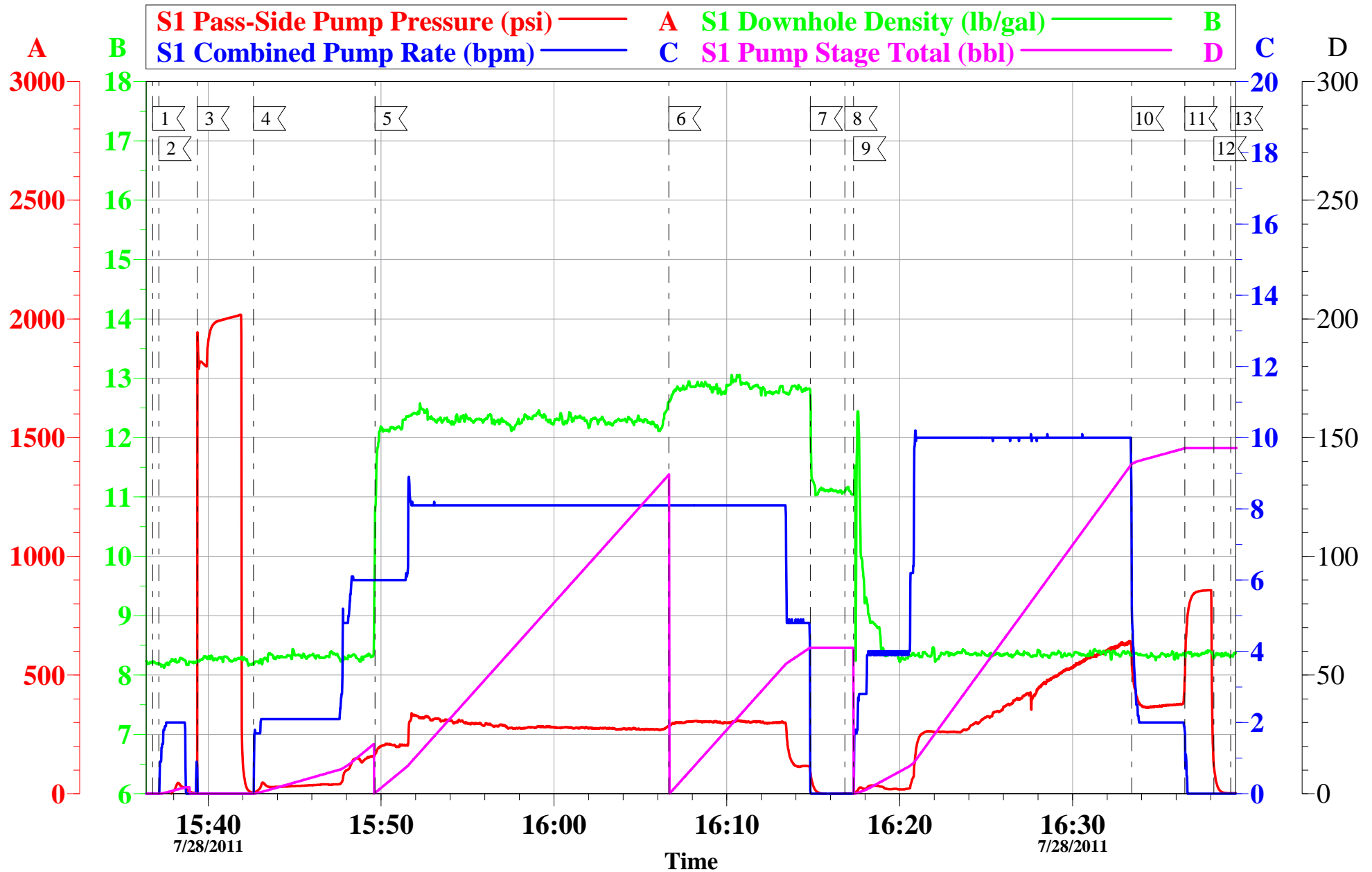
Job Date: 28-Jul-2011  
Job type: SURFACE  
Service Supervisor: RYAN MUHLESTEIN

Sales Order #: 8320422  
ADC Used: YES  
Operator/ Pump: TRAVIS BROWN/ ELITE 1

OptiCem v6.4.10  
28-Jul-11 17:07

# WILLIAMS

## PA 432-7 9 5/8" SURFACE CASING



Customer: WILLIAMS	Job Date: 28-Jul-2011	Sales Order #: 8320422
Well Description: PA 432-7	Job type: SURFACE	ADC Used: YES
Customer Rep: RON TOWERS	Service Supervisor: RYAN MUHLESTEIN	Operator/ Pump: TRAVIS BROWN/ ELITE 1

OptiCem v6.4.10  
28-Jul-11 17:07

<b>Sales Order #:</b> 8320422	<b>Line Item:</b> 10	<b>Survey Conducted Date:</b> 7/28/2011
<b>Customer:</b> WILLIAMS PRODUCTION RMT INC - EBUS		<b>Job Type (BOM):</b> CMT SURFACE CASING BOM
<b>Customer Representative:</b> RON TOWERS		<b>API / UWI: (leave blank if unknown)</b> 05-045-20154
<b>Well Name:</b> PA		<b>Well Number:</b> 432-7
<b>Well Type:</b> Development Well	<b>Well Country:</b> United States of America	
<b>H2S Present:</b> No	<b>Well State:</b> Colorado	<b>Well County:</b> Garfield

Dear Customer,

We hope that you were satisfied with the service quality of this job performed by Halliburton. It is the aim of our management and service personnel to deliver equipment and service of a standard unmatched in the service sector of the energy industry.

Please take the time to let us know if our performance met with your satisfaction. Please be as critical as possible to ensure we constantly improve our service. Your comments are of great value to us and are intended for the exclusive use of Halliburton.

### CUSTOMER SATISFACTION SURVEY

CATEGORY	CUSTOMER SATISFACTION RESPONSE	
Survey Conducted Date	The date the survey was conducted	7/28/2011
Survey Interviewer	The survey interviewer is the person who initiated the survey.	RYAN MUHLESTEIN (HB21105)
Customer Participation	Did the customer participate in this survey? (Y/N)	Yes
Customer Representative	Enter the Customer representative name	RON TOWERS
HSE	Was our HSE performance satisfactory? Circle Y or N	Yes
Equipment	Were you satisfied with our Equipment? Circle Y or N	Yes
Personnel	Were you satisfied with our people? Circle Y or N	Yes
Customer Comment	Customer's Comment	
Job DVA	Did we provide job DVA above our normal service today? Circle Y or N	No
Time	Please enter hours in decimal format to nearest quarter hour.	
Other	Enter short text for other efficiencies gained.	
Customer Initials	Customer's Initials	
Please provide details	Please describe how the job efficiencies were gained.	

CUSTOMER SIGNATURE

<b>Sales Order #:</b> 8320422	<b>Line Item:</b> 10	<b>Survey Conducted Date:</b> 7/28/2011
<b>Customer:</b> WILLIAMS PRODUCTION RMT INC - EBUS		<b>Job Type (BOM):</b> CMT SURFACE CASING BOM
<b>Customer Representative:</b> RON TOWERS		<b>API / UWI: (leave blank if unknown)</b> 05-045-20154
<b>Well Name:</b> PA		<b>Well Number:</b> 432-7
<b>Well Type:</b> Development Well	<b>Well Country:</b> United States of America	
<b>H2S Present:</b> No	<b>Well State:</b> Colorado	<b>Well County:</b> Garfield

### KEY PERFORMANCE INDICATORS

General	
<b>Survey Conducted Date</b> The date the survey was conducted	7/28/2011

Cementing KPI Survey	
<b>Type of Job</b> Select the type of job. (Cementing or Non-Cementing)	0
<b>Select the Maximum Deviation range for this Job</b> What is the highest deviation for the job you just completed? This may not be the maximum well deviation.	Vertical
<b>Total Operating Time (hours)</b> Total Operating Hours Including Rig-up, Pumping, Rig-down. Enter in decimal format.	3
<b>HSE Incident, Accident, Injury</b> HSE Incident, Accident, Injury. This should be recordable incidents only.	No
<b>Was the job purpose achieved?</b> Was the job delivered correctly as per customer agreed design?	Yes
<b>Operating Hours (Pumping Hours)</b> Total number of hours pumping fluid on this job. Enter in decimal format.	1.5
<b>Customer Non-Productive Rig Time (hrs)</b> Lost time due to Halliburton in the start, execution, or completion of an ordered service or product, or delays in a follow-on service. Enter in decimal format. 0 if none.	0
<b>Type of Rig Classification Job Was Performed</b> Type Of Rig (classification) Job Was Performed On	Drilling Rig (Portable)
<b>Number Of JSAs Performed</b> Number Of Jsas Performed	6
<b>Number of Unplanned Shutdowns</b> Unplanned shutdown is when injection stops for any period of time.	0
<b>Was this a Primary Cement Job (Yes / No)</b>	Yes

<b>Sales Order #:</b> 8320422	<b>Line Item:</b> 10	<b>Survey Conducted Date:</b> 7/28/2011
<b>Customer:</b> WILLIAMS PRODUCTION RMT INC - EBUS		<b>Job Type (BOM):</b> CMT SURFACE CASING BOM
<b>Customer Representative:</b> RON TOWERS		<b>API / UWI: (leave blank if unknown)</b> 05-045-20154
<b>Well Name:</b> PA		<b>Well Number:</b> 432-7
<b>Well Type:</b> Development Well	<b>Well Country:</b> United States of America	
<b>H2S Present:</b> No	<b>Well State:</b> Colorado	<b>Well County:</b> Garfield

Primary Cement Job= Casing job, Liner job, or Tie-back job.	
<b>Did We Run Wiper Plugs?</b> Did We Run Top And Bottom Casing Wiper Plugs?	Top
<b>Mixing Density of Job Stayed in Designed Density Range (0-100%)</b> Density Range defined as +/- .20 ppg. Calculation: Total BBLs cement mixed at designed density divided by total BBLs of cement multiplied by 100	98
<b>Was Automated Density Control Used?</b> Was Automated Density Control (ADC) Used ?	Yes
<b>Pump Rate (percent) of Job Stayed At Designed Pump Rate</b> Pump Rate range defined as +/- 1bbl/min. Calculation: Total BBLs of fluid pumped at the designed rate divided by Total BBLs of fluid pumped, multiplied by 100	98
<b>Nbr of Remedial Sqz Jobs Rqd - Competition</b> Number Of Remedial Squeeze Jobs Required After Primary Job Performed By Competition	0
<b>Nbr of Remedial Plug Jobs Rqd - HES</b> Number Of Remedial Plug Jobs Needed After Primary Plug Pumped By HES	0
<b>Nbr of Remedial Sqz Jobs Rqd - HES</b> Number Of Remedial Squeeze Jobs Required After Primary Job Performed By HES	0