

AUS-TEX EXPLORATION, INC.

CONSTRUCTION LAYOUT FOR

PATHFINDER C 11-12 #1

SECTION 12, T20S, R70W, 6th P.M.

Proposed 547' FNL 504' FWL

Access Road
To Pathfinder C 14-01 #1

Approx.
Toe of
Fill Slope



FIGURE #1

SCALE: 1" = 60'

DATE: 04-02-12

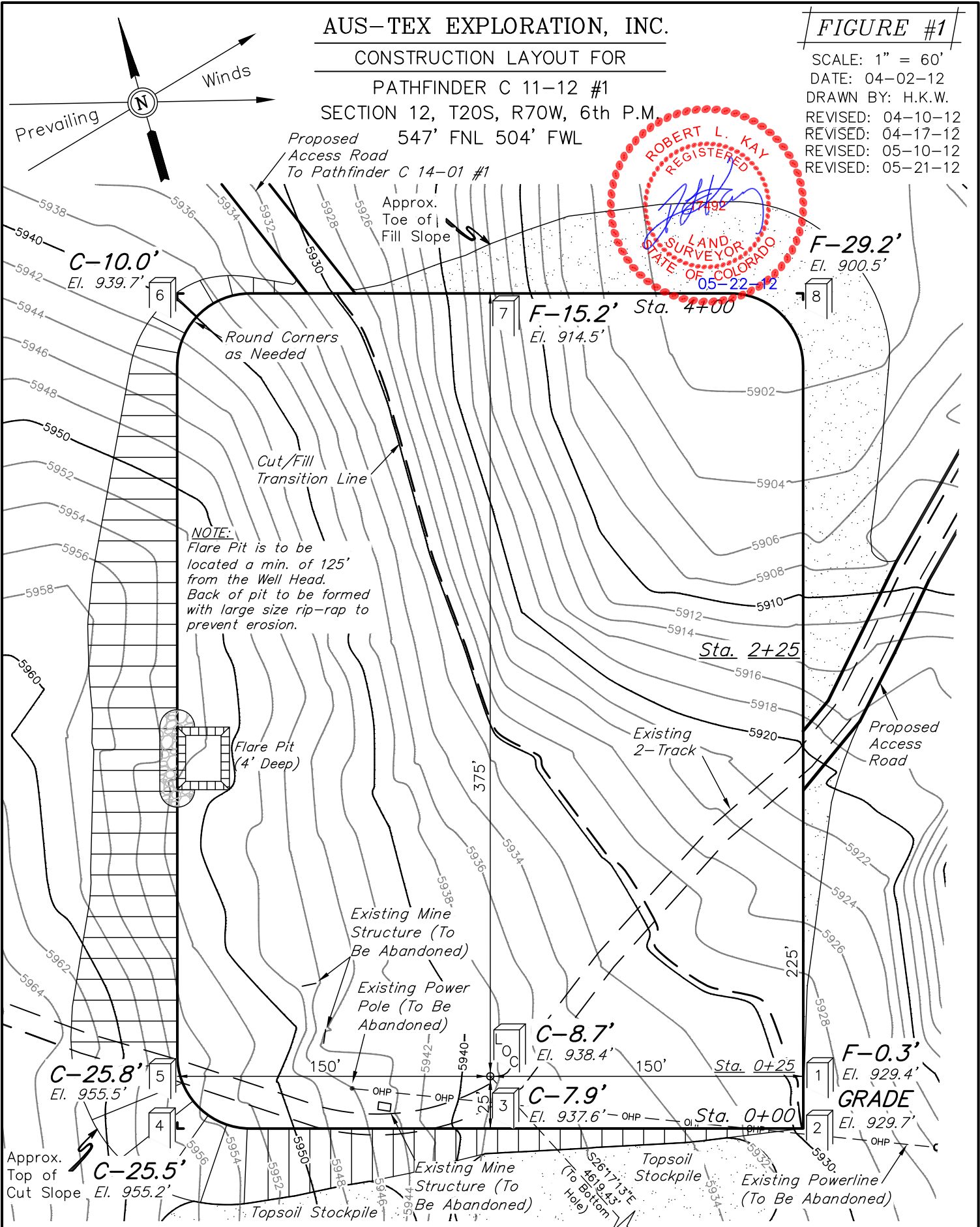
DRAWN BY: H.K.W.

REVISED: 04-10-12

REVISED: 04-17-12

REVISED: 05-10-12

REVISED: 05-21-12



Elev. Ungraded Ground At Loc. Stake = 5938.4'
FINISHED GRADE ELEV. AT LOC. STAKE = 5929.7'

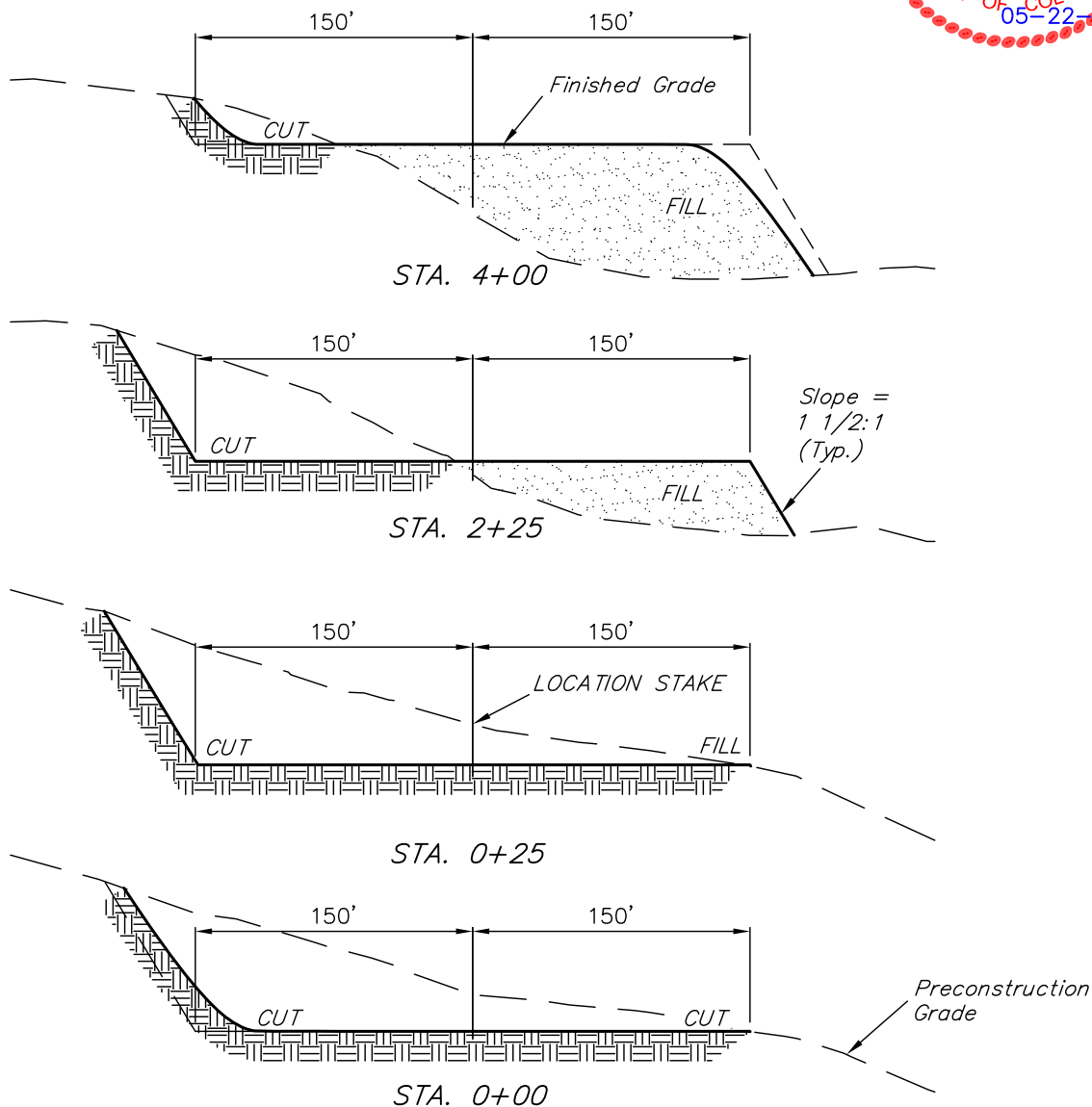
UINTAH ENGINEERING & LAND SURVEYING
85 So. 200 East * Vernal, Utah 84078 * (435) 789-1017

1" = 40'
X-Section
Scale
1" = 100'

DATE: 04-02-12
DRAWN BY: H.K.W.
REVISED: 04-17-12
REVISED: 05-10-12
REVISED: 05-21-12

AUS-TEX EXPLORATION, INC.
CONSTRUCTION LAYOUT CROSS SECTIONS FOR
PATHFINDER C 11-12 #1
SECTION 12, T20S, R70W, 6th P.M.
547' FNL 504' FWL

FIGURE #2



NOTE:

Topsoil should not be Stripped Below Finished Grade on Substructure Area.

APPROXIMATE ACREAGES
WELL SITE DISTURBANCE = ± 3.871 ACRES
ACCESS ROAD DISTURBANCE = ± 0.437 ACRES
TOTAL = ± 4.308 ACRES

* NOTE:

FILL QUANTITY INCLUDES 5% FOR COMPACTION

APPROXIMATE YARDAGES

(6") Topsoil Stripping = 2,940 Cu. Yds.
Remaining Location = 34,250 Cu. Yds.
TOTAL CUT = 37,190 CU. YDS.
FILL = 34,250 CU. YDS.

EXCESS MATERIAL = 2,940 Cu. Yds.
Topsoil = 2,940 Cu. Yds.

EXCESS UNBALANCE = 0 Cu. Yds.
(After Interim Rehabilitation)

UINTAH ENGINEERING & LAND SURVEYING
85 So. 200 East * Vernal, Utah 84078 * (435) 789-1017

AUS-TEX EXPLORATION, INC.

RECLAMATION DIAGRAM FOR

PATHFINDER C 11-12 #1

SECTION 12, T20S, R70W, 6th P.M.

547' FNL 504' FWL

FIGURE #3

SCALE: 1" = 60'

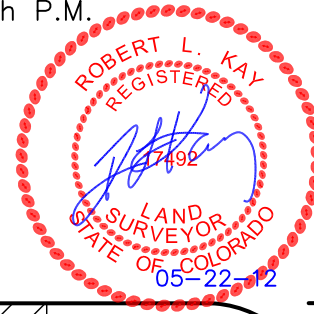
DATE: 04-02-12

DRAWN BY: H.K.W.

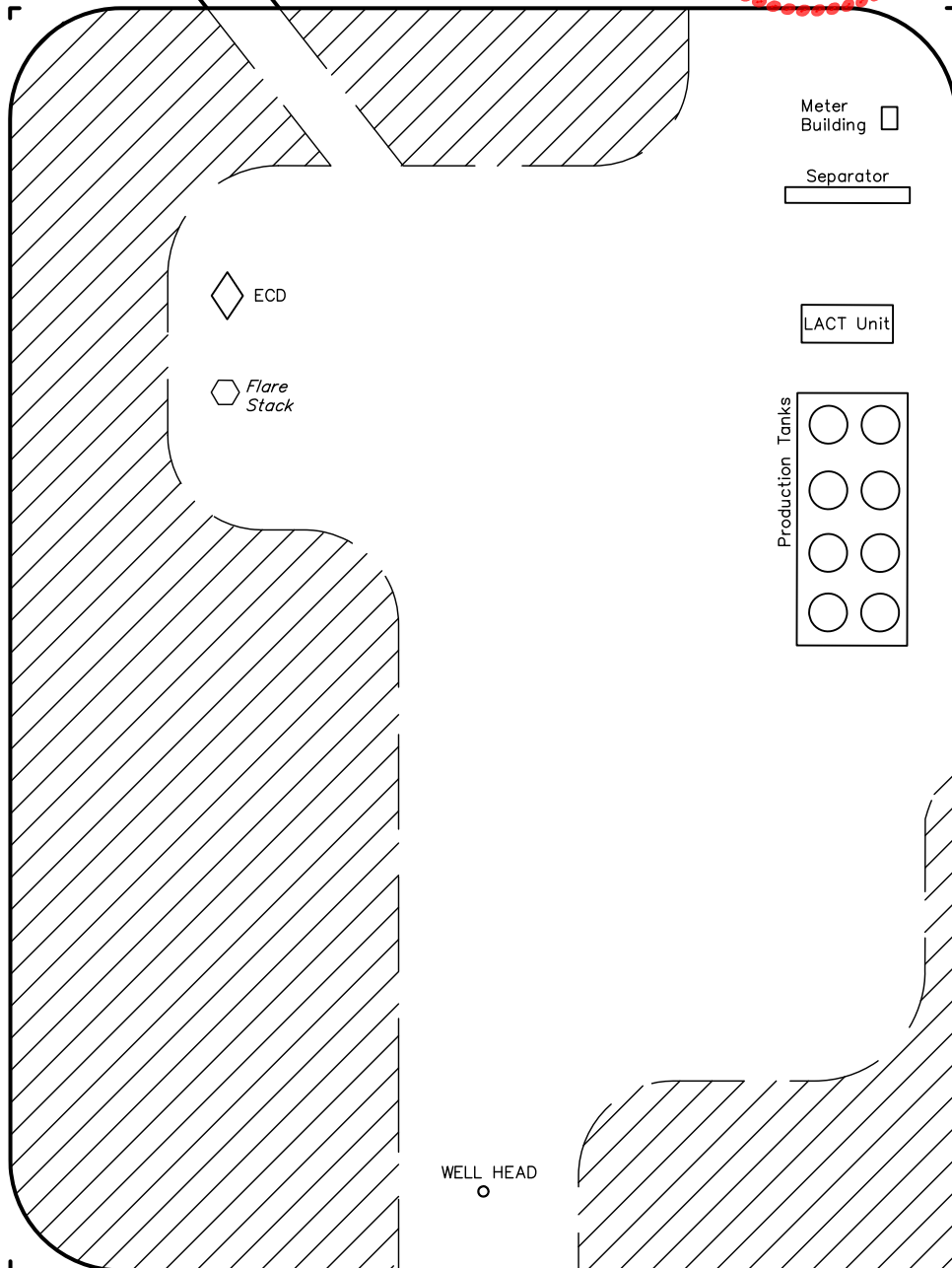
REVISED: 04-10-12

REVISED: 05-10-12

REVISED: 05-21-12



Access Road
To Pathfinder
C 14-01 #1



APPROXIMATE ACREAGES

UN-RECLAIMED = ± 1.516 ACRES

UINTAH ENGINEERING & LAND SURVEYING

85 So. 200 East * Vernal, Utah 84078 * (435) 789-1017