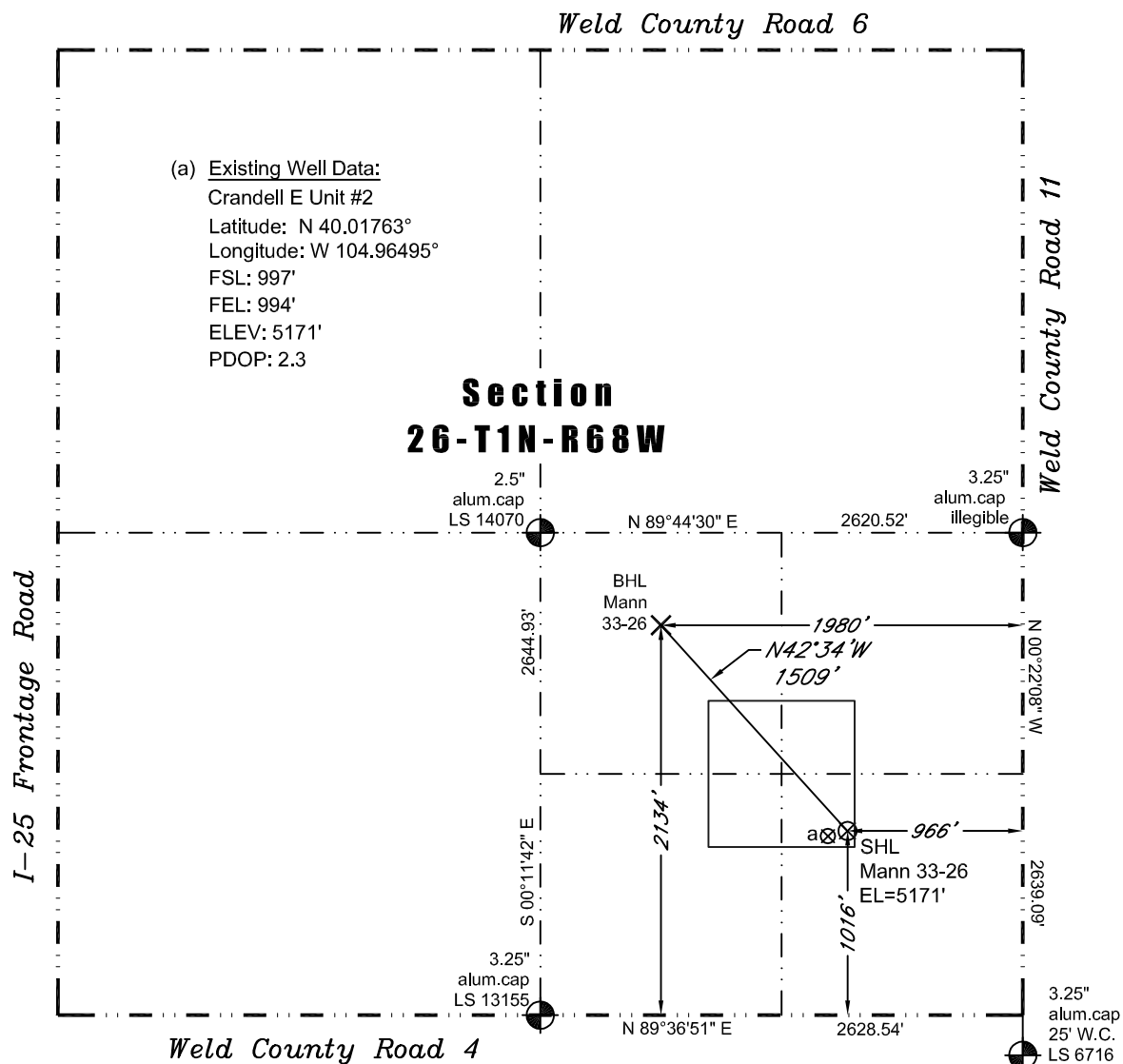


PLS Group, LLC

109 Coronado Ct. - Building No. 7
Fort Collins, Colorado 80525
P. 970-282-3446 Fx. 970-377-6767

WELL LOCATION CERTIFICATE

*THIS MAP DOES NOT
REPRESENT A BOUNDARY SURVEY*



In accordance with a request from Doug Pearlman of EnCana Oil & Gas (USA) Inc., PLS Group, LLC has determined the location of the **Mann 33-26** well site to be SHL: 1016' FSL and 966' FEL, (BHL: 2134' FSL and 1980' FEL) as measured at ninety (90) degrees from the section lines of Section 26, Township 1 North, Range 68 West, 6th Principal Meridian, City and County of Broomfield, CO.

Proposed Surface Hole Data:

Latitude: N 40.01768° (BHL 40.02075°)
Longitude: W 104.96485° (BHL 104.96847°)
PDOP: 2.6

Nearest:

Building 579' northeast	Above Ground Utility 931' east
Public Road 951' east	Railroad 4100' northeast
Property Line 347' west	Well Window: SHL is 52' inside
Existing Well: Crandell E Unit #2 33' southwest	

Notes:

- 1) Bearings and distances based upon NAD 83 Colorado North State Plane Coordinates using RTK GPS observations taken on 3/15/2010 by operator Craig Burke.
- 2) Conversion factor to ground (1.000280465).
- 3) Elevations based on NAVD 88 GPS heights and Geoid 2003 corrections.
- 4) See improvement map for visible improvements within 400 feet of pad site.
- 5) The surface use is agricultural land.

NOTICE: According to Colorado law you must commence any legal action based upon any defect in this W.L.C. within three years after you first discover such defect. In no event may any action based upon any defect in this W.L.C. be commenced more than ten years from this said date of the certification shown hereon.

I hereby certify that this Well Location Certificate was prepared by me or under my direct supervision on 5/9/2011 for and on behalf of EnCana Oil & Gas (USA) Inc. That it is not a Land Survey Plat or an Improvement Survey Plat and that it is not to be relied upon for establishment of fences, buildings, or other future improvement lines.



John Robert McGehee LS#38219
Well: Mann 33-26 WLC