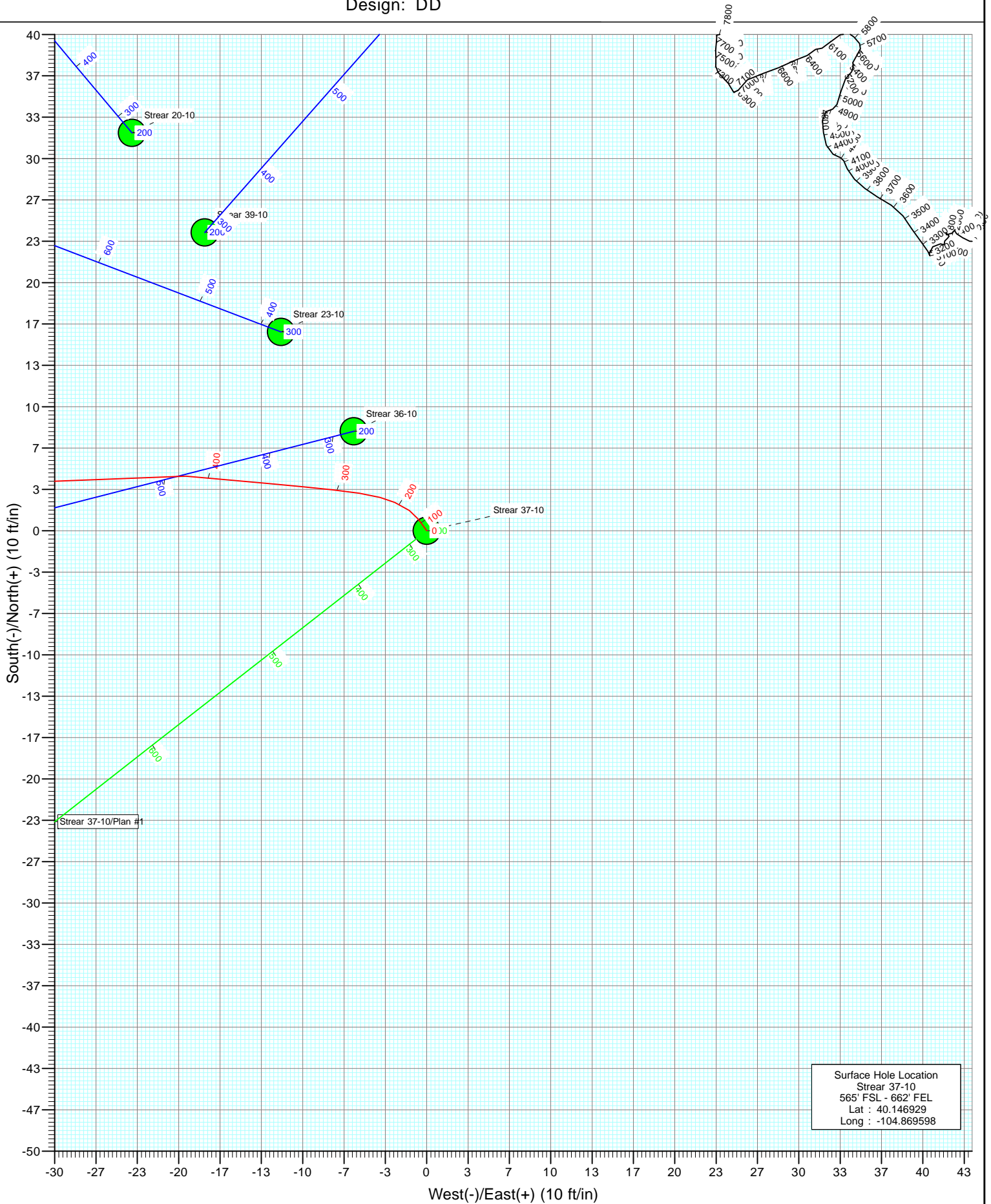
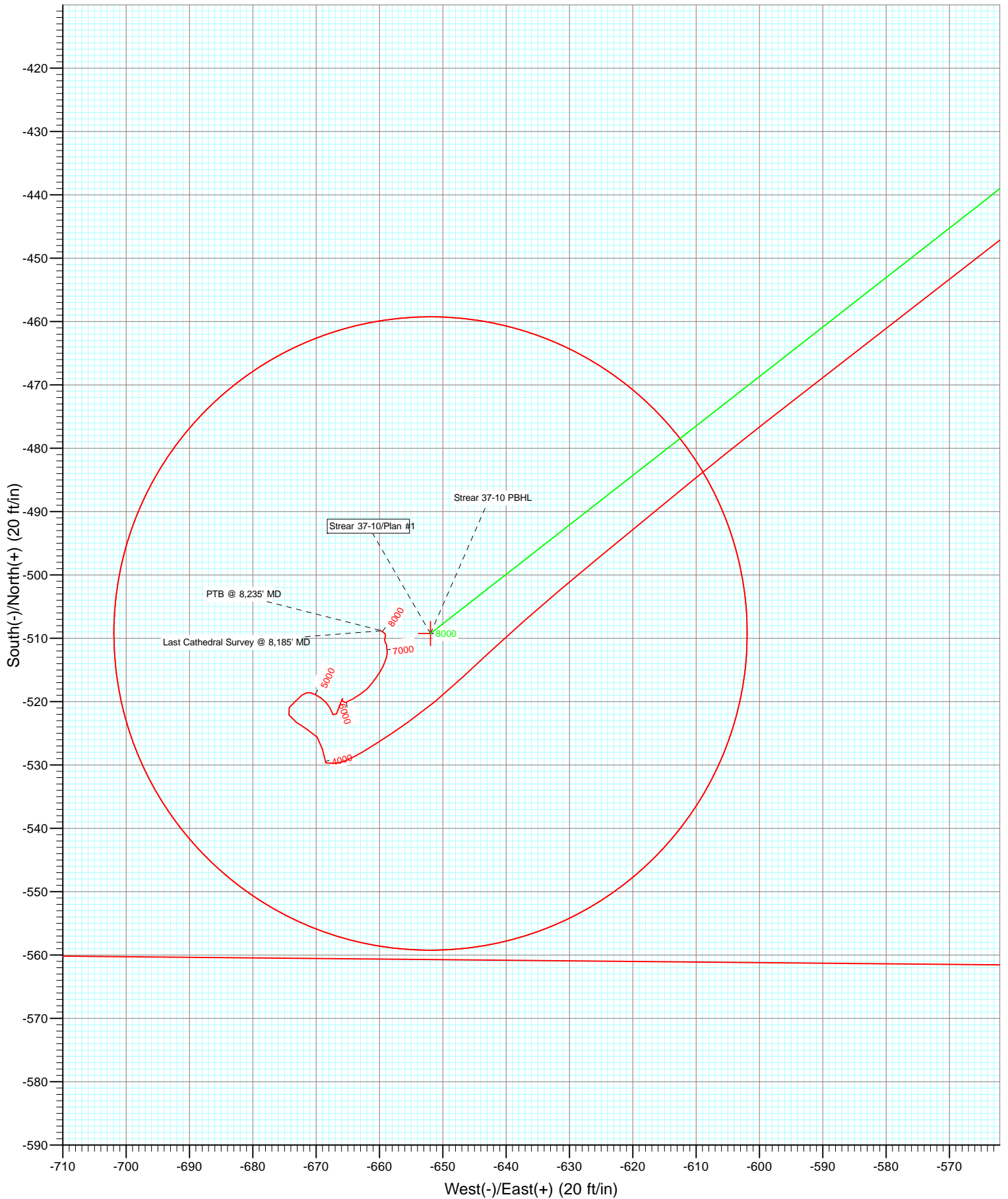


Azimuths to True North  
Magnetic North: 8.81°

Magnetic Field  
Strength: 52919.1nT  
Dip Angle: 66.81°  
Date: 2/1/2012  
Model: IGRF2010

Type	DD	Azimuth	Origin	N/S	E/W	From
User	Strear 37-10	260.71	Type	0.0	0.0	TVD
	125100 140655; LR		Slot			
	KBE @ 4976.0ft (Xtreme 14)					
	North American Datum 1983					
	Well Strear 37-10, True North					
Name	Strear 37-10 PBHL	TVD	+N/-S	+E/-W	Latitude	Longitude
		8111.0	-509.2	-651.9	40.145531	-104.871930





## Survey Report

<b>Company:</b>	Anadarko Petroleum Corporation	<b>Local Co-ordinate Reference:</b>	Well Strear 37-10
<b>Project:</b>	DJ Wattenberg	<b>TVD Reference:</b>	KBE @ 4976.0ft (Xtreme 14)
<b>Site:</b>	SESE Sec10-T2N-R67W (Strear 16-10-9F)	<b>MD Reference:</b>	KBE @ 4976.0ft (Xtreme 14)
<b>Well:</b>	Strear 37-10	<b>North Reference:</b>	True
<b>Wellbore:</b>	DD	<b>Survey Calculation Method:</b>	Minimum Curvature
<b>Design:</b>	DD	<b>Database:</b>	USA EDM 5000 Multi Users DB

<b>Project</b>	DJ Wattenberg		
<b>Map System:</b>	US State Plane 1983	<b>System Datum:</b>	Mean Sea Level
<b>Geo Datum:</b>	North American Datum 1983		
<b>Map Zone:</b>	Colorado Northern Zone		

Site	SESE Sec10-T2N-R67W (Strear 16-10-9F)				
Site Position:		Northing:	1,297,030.56 ft	Latitude:	40.147017
From:	Lat/Long	Easting:	3,176,209.76 ft	Longitude:	-104.869683
Position Uncertainty:	0.0 ft	Slot Radius:	13.200 in	Grid Convergence:	0.41 °

Well	Strear 37-10					
Well Position	+N/-S	0.0 ft	Northing:	1,296,998.67 ft	Latitude:	40.146929
	+E/-W	0.0 ft	Easting:	3,176,233.75 ft	Longitude:	-104.869598
Position Uncertainty		0.0 ft	Wellhead Elevation:	ft	Ground Level:	4,961.0 ft

<b>Wellbore</b>	DD				
<b>Magnetics</b>	<b>Model Name</b>	<b>Sample Date</b>	<b>Declination (°)</b>	<b>Dip Angle (°)</b>	<b>Field Strength (nT)</b>
	IGRF2010	2/1/2012	8.81	66.81	52,919

<b>Design</b>	DD				
<b>Audit Notes:</b>					
<b>Version:</b>	1.0	<b>Phase:</b>	ACTUAL	<b>Tie On Depth:</b>	0.0
<b>Vertical Section:</b>	<b>Depth From (TVD)</b>	<b>+N/-S</b>	<b>+E/-W</b>	<b>Direction</b>	
	(ft)	(ft)	(ft)	(°)	
	0.0	0.0	0.0	260.71	

<b>Survey Program</b>	<b>Date</b>	2/7/2012			
<b>From (ft)</b>	<b>To (ft)</b>	<b>Survey (Wellbore)</b>	<b>Tool Name</b>	<b>Description</b>	
120.0	8,235.0	Survey #1 (DD)	MWD	Geolink MWD	

<b>Survey</b>										
<b>Measured Depth (ft)</b>	<b>Inclination (°)</b>	<b>Azimuth (°)</b>	<b>Vertical Depth (ft)</b>	<b>+N/-S (ft)</b>	<b>+E/-W (ft)</b>	<b>Vertical Section (ft)</b>	<b>Dogleg Rate (°/100ft)</b>	<b>Build Rate (°/100ft)</b>	<b>Formations / Comments</b>	
0.0	0.00	0.00	0.0	0.0	0.0	0.0	0.00	0.00		
120.0	1.10	324.30	120.0	0.9	-0.7	0.5	0.92	0.92		
212.0	1.90	294.50	212.0	2.3	-2.6	2.2	1.19	0.87		
305.0	4.50	276.00	304.8	3.3	-7.6	7.0	2.97	2.80		
414.0	8.00	274.90	413.1	4.4	-19.4	18.5	3.21	3.21		
503.0	9.60	261.90	501.1	3.9	-32.9	31.9	2.86	1.80		
592.0	10.10	247.20	588.8	-0.2	-47.5	46.9	2.87	0.56		
660.0	9.30	235.80	655.8	-5.6	-57.5	57.7	3.05	-1.18		
762.0	9.10	229.70	756.5	-15.4	-70.5	72.1	0.98	-0.20		
867.0	11.80	231.00	859.8	-27.6	-85.2	88.5	2.58	2.57		
957.0	14.00	225.90	947.5	-40.9	-100.1	105.4	2.75	2.44		
1,044.0	15.10	228.00	1,031.7	-55.8	-116.1	123.6	1.40	1.26		
1,132.0	17.10	227.10	1,116.3	-72.3	-134.1	144.0	2.29	2.27		

## Survey Report

<b>Company:</b>	Anadarko Petroleum Corporation	<b>Local Co-ordinate Reference:</b>	Well Strear 37-10
<b>Project:</b>	DJ Wattenberg	<b>TVD Reference:</b>	KBE @ 4976.0ft (Xtreme 14)
<b>Site:</b>	SESE Sec10-T2N-R67W (Strear 16-10-9F)	<b>MD Reference:</b>	KBE @ 4976.0ft (Xtreme 14)
<b>Well:</b>	Strear 37-10	<b>North Reference:</b>	True
<b>Wellbore:</b>	DD	<b>Survey Calculation Method:</b>	Minimum Curvature
<b>Design:</b>	DD	<b>Database:</b>	USA EDM 5000 Multi Users DB

Survey									
Measured Depth (ft)	Inclination (°)	Azimuth (°)	Vertical Depth (ft)	+N/-S (ft)	+E/-W (ft)	Vertical Section (ft)	Dogleg Rate (°/100ft)	Build Rate (°/100ft)	Formations / Comments
1,222.0	16.50	225.30	1,202.4	-90.3	-152.9	165.5	0.88	-0.67	
1,310.0	16.40	224.80	1,286.8	-107.9	-170.5	185.7	0.20	-0.11	
1,398.0	16.30	224.40	1,371.3	-125.6	-187.9	205.7	0.17	-0.11	
1,488.0	15.80	224.30	1,457.8	-143.4	-205.3	225.8	0.56	-0.56	
1,576.0	16.40	226.60	1,542.3	-160.5	-222.7	245.7	0.99	0.68	
1,663.0	15.50	224.70	1,626.0	-177.2	-239.8	265.3	1.20	-1.03	
1,751.0	15.50	227.70	1,710.8	-193.4	-256.8	284.7	0.91	0.00	
1,838.0	16.00	232.80	1,794.5	-208.5	-274.9	305.0	1.69	0.57	
1,928.0	14.70	231.50	1,881.3	-223.1	-293.8	325.9	1.49	-1.44	
2,018.0	15.80	228.00	1,968.1	-238.4	-311.8	346.2	1.59	1.22	
2,107.0	16.50	230.60	2,053.6	-254.6	-330.6	367.3	1.13	0.79	
2,197.0	14.60	230.30	2,140.3	-269.9	-349.2	388.2	2.11	-2.11	
2,286.0	15.50	229.00	2,226.2	-284.9	-366.8	408.0	1.08	1.01	
2,373.0	16.70	231.90	2,309.8	-300.2	-385.4	428.8	1.66	1.38	
2,459.0	14.20	229.00	2,392.7	-314.8	-403.1	448.6	3.04	-2.91	
2,549.0	15.30	231.40	2,479.8	-329.4	-420.7	468.4	1.40	1.22	
2,639.0	16.40	225.50	2,566.3	-345.7	-439.0	489.1	2.17	1.22	
2,727.0	15.50	228.30	2,651.0	-362.3	-456.7	509.2	1.35	-1.02	
2,817.0	15.90	229.30	2,737.6	-378.3	-475.0	529.9	0.54	0.44	
2,905.0	17.30	230.00	2,821.9	-394.6	-494.2	551.4	1.61	1.59	
2,994.0	16.80	233.20	2,907.0	-410.8	-514.6	574.2	1.19	-0.56	
3,082.0	16.20	232.40	2,991.4	-425.9	-534.5	596.3	0.73	-0.68	
3,168.0	16.40	232.30	3,073.9	-440.6	-553.6	617.5	0.23	0.23	
3,258.0	15.80	232.10	3,160.4	-455.9	-573.3	639.4	0.67	-0.67	
3,347.0	16.00	232.30	3,246.0	-470.9	-592.6	660.9	0.23	0.22	
3,436.0	13.60	230.80	3,332.0	-485.0	-610.4	680.7	2.73	-2.70	
3,524.0	11.30	230.50	3,418.0	-497.0	-625.1	697.2	2.61	-2.61	
3,612.0	9.40	228.60	3,504.5	-507.3	-637.1	710.7	2.19	-2.16	
3,701.0	7.60	226.40	3,592.5	-516.1	-646.9	721.7	2.05	-2.02	
3,791.0	6.70	235.10	3,681.9	-523.2	-655.5	731.4	1.56	-1.00	
3,880.0	4.50	239.40	3,770.4	-528.0	-662.7	739.3	2.51	-2.47	
3,968.0	1.80	269.90	3,858.3	-529.7	-667.1	743.9	3.51	-3.07	
4,057.0	0.10	24.90	3,947.3	-529.7	-668.5	745.2	2.07	-1.91	
4,146.0	0.80	342.90	4,036.3	-529.0	-668.6	745.3	0.82	0.79	
4,234.0	1.30	347.70	4,124.3	-527.5	-669.0	745.4	0.58	0.57	
4,322.0	1.40	325.20	4,212.2	-525.6	-669.8	745.9	0.61	0.11	
4,411.0	1.50	290.90	4,301.2	-524.3	-671.5	747.4	0.97	0.11	
4,499.0	1.10	320.30	4,389.2	-523.2	-673.2	748.8	0.87	-0.45	
4,587.0	1.00	309.90	4,477.2	-522.1	-674.3	749.7	0.24	-0.11	
4,675.0	1.20	44.00	4,565.2	-520.9	-674.2	749.5	1.84	0.23	
4,762.0	0.90	45.10	4,652.1	-519.8	-673.1	748.2	0.35	-0.34	
4,851.0	0.60	50.90	4,741.1	-519.0	-672.3	747.2	0.35	-0.34	
4,938.0	0.50	73.20	4,828.1	-518.6	-671.5	746.5	0.27	-0.11	
5,027.0	0.40	107.40	4,917.1	-518.6	-670.9	745.8	0.32	-0.11	
5,116.0	0.70	115.40	5,006.1	-518.9	-670.1	745.1	0.35	0.34	
5,204.0	0.70	127.50	5,094.1	-519.5	-669.2	744.3	0.17	0.00	
5,293.0	0.60	136.80	5,183.1	-520.1	-668.4	743.6	0.16	-0.11	
5,381.0	0.70	150.40	5,271.1	-520.9	-667.8	743.2	0.21	0.11	
5,471.0	0.90	157.70	5,361.1	-522.1	-667.3	742.8	0.25	0.22	
5,560.0	1.10	18.00	5,450.1	-521.9	-666.8	742.3	2.11	0.22	
5,649.0	0.80	23.90	5,539.1	-520.5	-666.3	741.6	0.35	-0.34	
5,738.0	0.30	24.30	5,628.1	-519.7	-665.9	741.1	0.56	-0.56	
5,826.0	0.00	44.70	5,716.1	-519.5	-665.8	741.0	0.34	-0.34	

## Survey Report

<b>Company:</b>	Anadarko Petroleum Corporation	<b>Local Co-ordinate Reference:</b>	Well Strear 37-10
<b>Project:</b>	DJ Wattenberg	<b>TVD Reference:</b>	KBE @ 4976.0ft (Xtreme 14)
<b>Site:</b>	SESE Sec10-T2N-R67W (Strear 16-10-9F)	<b>MD Reference:</b>	KBE @ 4976.0ft (Xtreme 14)
<b>Well:</b>	Strear 37-10	<b>North Reference:</b>	True
<b>Wellbore:</b>	DD	<b>Survey Calculation Method:</b>	Minimum Curvature
<b>Design:</b>	DD	<b>Database:</b>	USA EDM 5000 Multi Users DB

Survey									
Measured Depth (ft)	Inclination (°)	Azimuth (°)	Vertical Depth (ft)	+N/-S (ft)	+E/-W (ft)	Vertical Section (ft)	Dogleg Rate (°/100ft)	Build Rate (°/100ft)	Formations / Comments
5,914.0	0.10	236.70	5,804.1	-519.6	-665.9	741.0	0.11	0.11	
6,002.0	0.40	159.50	5,892.1	-519.9	-665.8	741.0	0.44	0.34	
6,091.0	0.50	80.20	5,981.1	-520.1	-665.3	740.6	0.65	0.11	
6,179.0	1.00	57.40	6,069.1	-519.7	-664.3	739.5	0.65	0.57	
6,267.0	1.00	57.10	6,157.1	-518.8	-663.0	738.1	0.01	0.00	
6,354.0	0.80	44.80	6,244.0	-518.0	-662.0	736.9	0.32	-0.23	
6,443.0	0.80	39.40	6,333.0	-517.1	-661.1	735.9	0.08	0.00	
6,533.0	0.70	30.60	6,423.0	-516.1	-660.4	735.1	0.17	-0.11	
6,622.0	0.60	36.80	6,512.0	-515.3	-659.9	734.4	0.14	-0.11	
6,711.0	0.60	23.40	6,601.0	-514.5	-659.4	733.8	0.16	0.00	
6,800.0	0.50	21.40	6,690.0	-513.7	-659.1	733.4	0.11	-0.11	
6,889.0	0.40	13.90	6,779.0	-513.0	-658.9	733.1	0.13	-0.11	
6,978.0	0.30	4.90	6,868.0	-512.5	-658.8	732.9	0.13	-0.11	
7,068.0	0.30	0.90	6,958.0	-512.0	-658.8	732.8	0.02	0.00	
7,157.0	0.20	336.90	7,047.0	-511.6	-658.8	732.8	0.16	-0.11	
7,246.0	0.20	12.90	7,136.0	-511.3	-658.9	732.8	0.14	0.00	
7,335.0	0.10	333.90	7,225.0	-511.1	-658.9	732.7	0.15	-0.11	
7,424.0	0.30	334.80	7,314.0	-510.8	-659.0	732.8	0.22	0.22	
7,512.0	0.20	344.60	7,402.0	-510.5	-659.1	732.9	0.12	-0.11	
7,600.0	0.10	3.70	7,490.0	-510.2	-659.2	732.9	0.13	-0.11	
7,688.0	0.20	4.90	7,578.0	-510.0	-659.1	732.8	0.11	0.11	
7,778.0	0.20	20.50	7,668.0	-509.7	-659.1	732.7	0.06	0.00	
7,866.0	0.10	350.20	7,756.0	-509.5	-659.0	732.7	0.14	-0.11	
7,955.0	0.20	324.60	7,845.0	-509.3	-659.1	732.7	0.13	0.11	
8,044.0	0.20	306.80	7,934.0	-509.1	-659.3	732.9	0.07	0.00	
8,134.0	0.20	300.90	8,024.0	-508.9	-659.6	733.1	0.02	0.00	
8,185.0	0.20	299.10	8,075.0	-508.8	-659.8	733.3	0.01	0.00	Last Cathedral Survey @ 8,185' MD
8,221.0	0.20	297.80	8,111.0	-508.8	-659.9	733.4	0.01	0.00	Strear 37-10 PBHL
8,235.0	0.20	297.30	8,125.0	-508.7	-659.9	733.4	0.01	0.00	PTB @ 8,235' MD

Targets									
Target Name	Dip Angle (°)	Dip Dir. (°)	TVD (ft)	+N/-S (ft)	+E/-W (ft)	Northing (ft)	Easting (ft)	Latitude	Longitude
Strear 37-10 PBHL	0.00	0.00	8,111.0	-509.2	-651.9	1,296,484.80	3,175,585.46	40.145531	-104.871930
- actual wellpath misses target center by 8.0ft at 8221.0ft MD (8111.0 TVD, -508.8 N, -659.9 E)									
- Circle (radius 50.0)									

Design Annotations					
Measured Depth (ft)	Vertical Depth (ft)	+N/-S (ft)	+E/-W (ft)	Comment	
8,185.0	8,075.0	-508.8	-659.8	Last Cathedral Survey @ 8,185' MD	
8,235.0	8,125.0	-508.7	-659.9	PTB @ 8,235' MD	

Checked By: _____	Approved By: _____	Date: _____
-------------------	--------------------	-------------