

GREAT WESTERN OIL & GAS COMPANY

CONSTRUCTION LAYOUT FOR

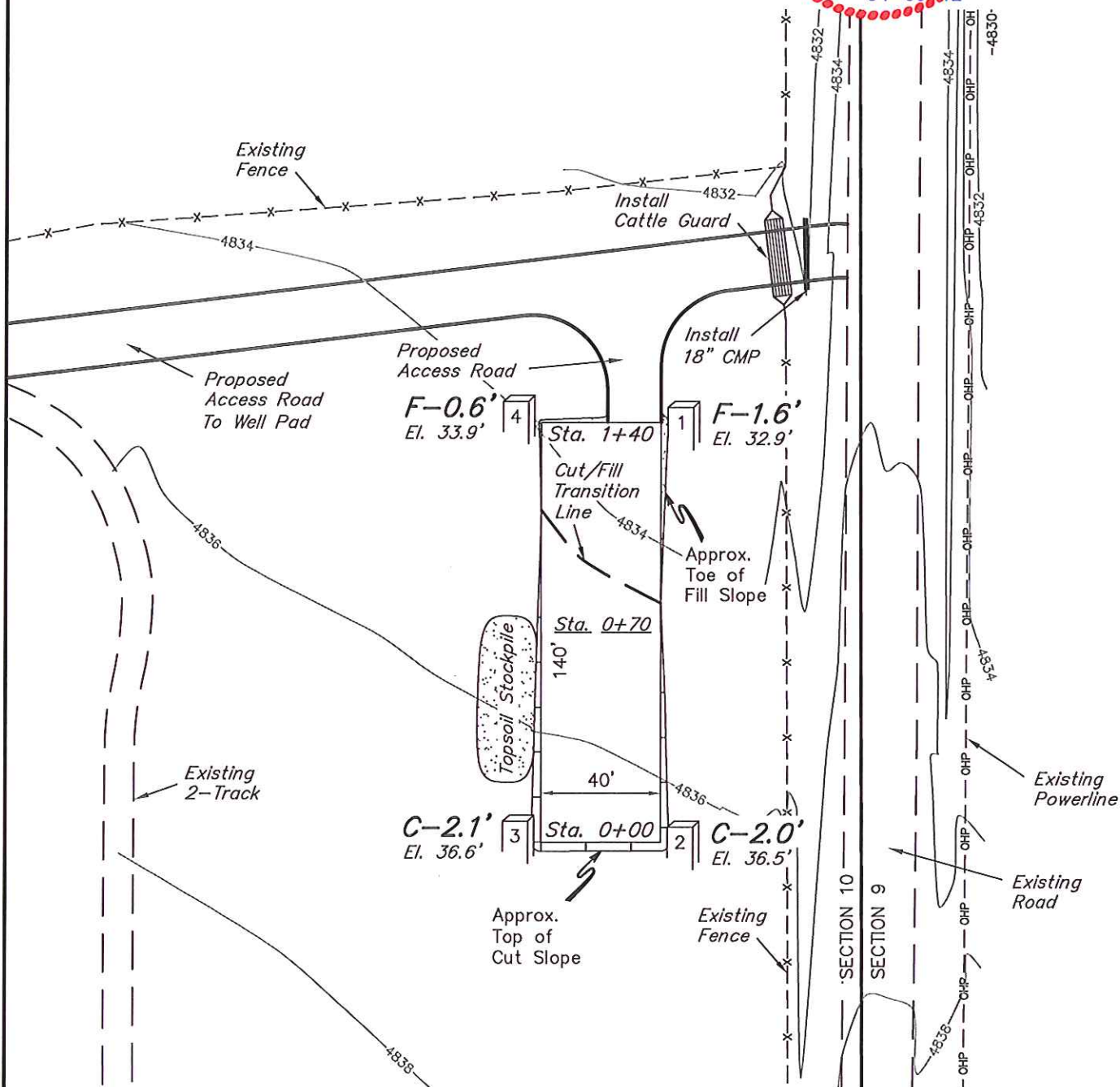
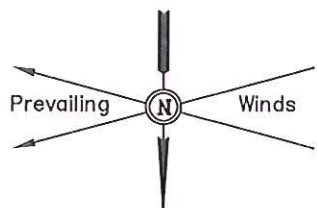
De TIENNE FD #10-18 & #10-25D
(OFF SITE TANK PAD)
SECTION 10, T6N, R67W, 6th P.M.
NW 1/4 SW 1/4

FIGURE #6

SCALE: 1" = 50'

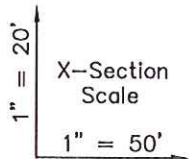
DATE: 03-23-12

DRAWN BY: T.B.



FINISHED GRADE ELEV. = 4834.5'

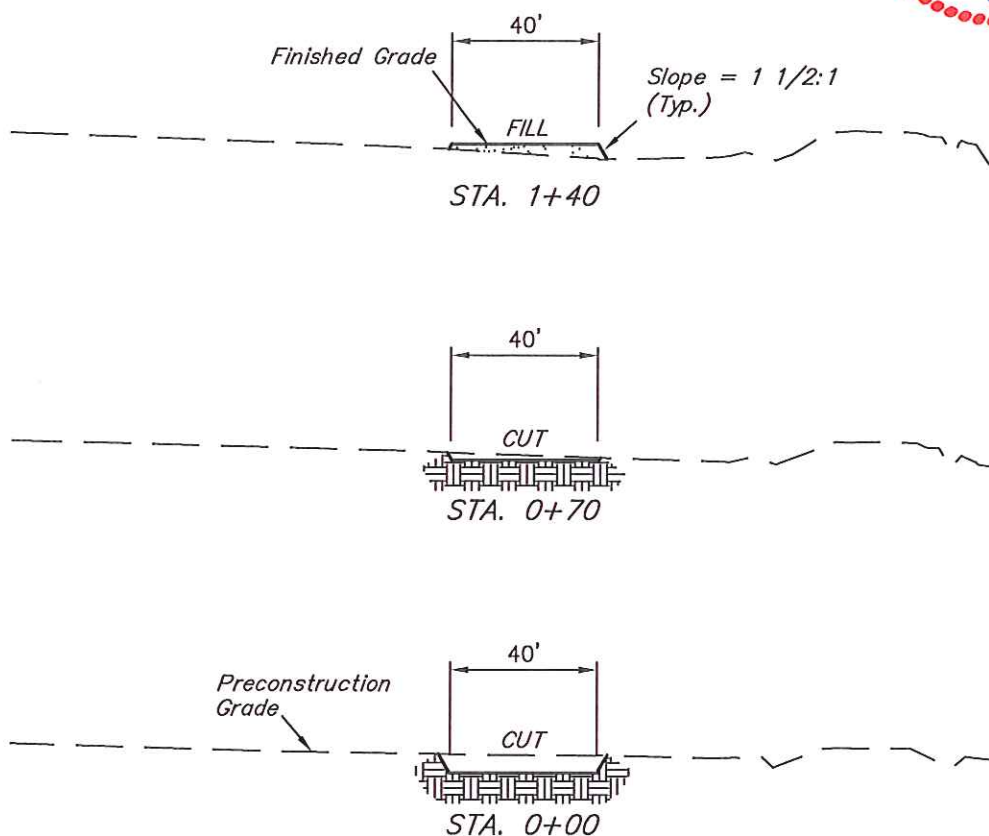
UINTAH ENGINEERING & LAND SURVEYING
85 So. 200 East * Vernal, Utah 84078 * (435) 789-1017



DATE: 04-06-12
DRAWN BY: T.B.

GREAT WESTERN OIL & GAS COMPANY
CONSTRUCTION LAYOUT CROSS SECTIONS FOR
De TIENNE FD #10-18 & #10-25D
(OFF SITE TANK PAD)
SECTION 10, T6N, R67W, 6th P.M.
NW 1/4 SW 1/4

FIGURE #7



APPROXIMATE ACREAGES
TANK PAD DISTURBANCE = ± 0.166 ACRES
TANK PAD ACCESS ROAD DISTURBANCE = ± 0.034 ACRES
TOTAL = ± 0.200 ACRES

* NOTE:
FILL QUANTITY INCLUDES
5% FOR COMPACTION

APPROXIMATE YARDAGES

(6") Topsoil Stripping = 120 Cu. Yds.
Remaining Location = 100 Cu. Yds.
TOTAL CUT = 220 CU. YDS.
FILL = 100 CU. YDS.

EXCESS MATERIAL = 120 Cu. Yds.
Topsoil = 120 Cu. Yds.
EXCESS UNBALANCE = 0 Cu. Yds.
(After Interim Rehabilitation)

UINTAH ENGINEERING & LAND SURVEYING
85 So. 200 East * Vernal, Utah 84078 * (435) 789-1017