

Frac Wellbore Schematic Report

Well Name: MCMILLEN TRUST 19-03G

Well Config: VERTICAL - ORIGINAL HOLE, 3/20/2012 11:50:01 AM

Well Header

API		Business Unit		Spud Date		Well Configuration Type	
05-123-14905		WATTENBERG		2/13/1992		VERTICAL	
Orig KB Elev (ft)	KB - GL / ...	Quarter Quarter	Sec/Abs	Twn/Sur...	Range	P & A Date	
4,744.00	12	NENW	19	4N	65W		

Comment

TIGHT SPOT @ 7205' COULD NOT GET THRU!

Directions To Well

WCR 44 & 37, SOUTH 0.2, EAST 0.2, NORTHEAST INTO.

Current PBTD (ftKB)

ORIGINAL HOLE - 7235.1

Bottom Hole Location

North-South Distance (ft)	From N or S Line	East-West Distance (ft)	From E or W Line

PBTDs

Date	Depth (ftKB)	Method	Comment
2/19/1992	7,257.0	TAG	LATCH DOWN COLLAR
2/22/1992	7,237.0	CASED HOLE LOG	DEPTH LOGGER ON CBL

Wellbore Sections

Section	Size (in)	Act Top (ftKB)	Act Btm (ftKB)
SURFACE	12 1/4	12.0	526.0
PRODUCTION	7 7/8	526.0	7,310.0

Zone Statuses

Zone	Status Date	Status	Job
CODELL	4/11/1992	PR	DRILLING/COMPLETION - ORIGI...
NIOBRARA	4/11/1992	PR	DRILLING/COMPLETION - ORIGI...
CODELL	7/31/2000	PR	RE-FRAC, 7/21/2000 00:00
CODELL	5/8/2006	SI	RE-FRAC, 5/8/2006 00:00
NIOBRARA	6/10/2006	PR	RE-FRAC, 5/8/2006 00:00
NIOBRARA	3/20/2007	PR	COMMINGLE ZONES, 3/12/2007 0...
CODELL	3/20/2007	PR	COMMINGLE ZONES, 3/12/2007 0...
CODELL	1/9/2012	PR	TRI-FRAC, 11/10/2011 06:00

Casing Strings

Casing Description	Run Date	String OD (in)	String Wt (lbs/ft)	String Grade	Top (ftKB)	Set Depth (ftKB)
Surface	2/13/1992	8 5/8	23.00	J-55	12.0	511.0
Production	2/19/1992	4 1/2	11.60	M-75	12.0	7,298.0

Cement

Description	Top (ftKB)	Btm (ftKB)
SURFACE CASING CEMENT	12.0	511.0
PRODUCTION CASING CEMENT	4,050.0	4,728.0
PRODUCTION CASING CEMENT	6,310.0	7,298.0

Tubing Components

Item Description	OD (in)	Wt (lbs/ft)	Grade	Jts	Len (ft)
Tubing Pup Joint	2 3/8	4.70	J-55	1	6.00
Tubing Pup Joint	2 3/8	4.70	J-55	1	8.00
EUE 8rd Tubing	2 3/8	4.70	J-55	231	7,141.73
Notch Seat Nipple	2 3/8	4.70	N-80	1	1.20

Perforation Data

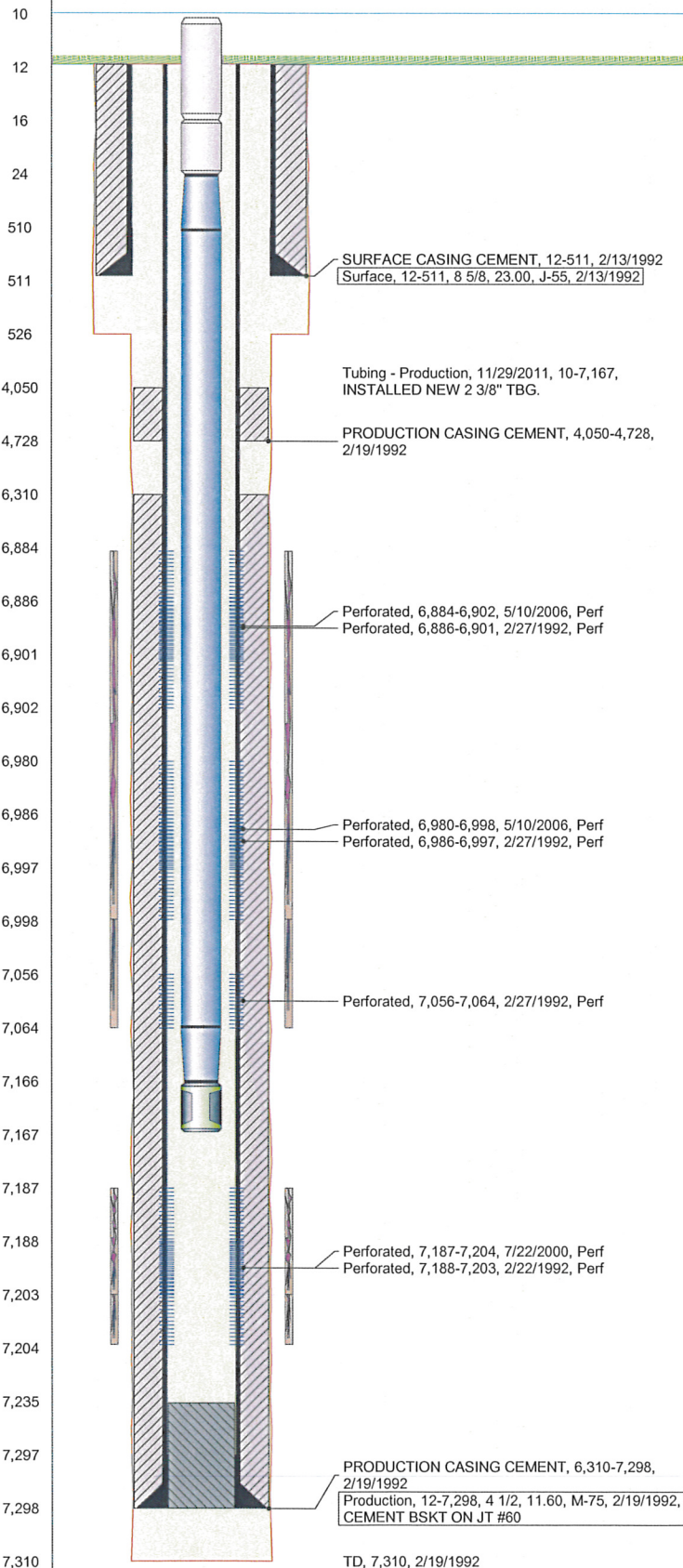
Zone	Bnch/Stg	Entered Shot Total	Top (ftKB)	Btm (ftKB)	Date
NIOBRARA, ORIGI...	A	108	6,884.0	6,902.0	5/10/2006
NIOBRARA, ORIGI...	A	10	6,886.0	6,901.0	2/27/1992
NIOBRARA, ORIGI...	B	108	6,980.0	6,998.0	5/10/2006
NIOBRARA, ORIGI...	B	10	6,986.0	6,997.0	2/27/1992
NIOBRARA, ORIGI...	C	8	7,056.0	7,064.0	2/27/1992
CODELL, ORIGINA...		72	7,187.0	7,204.0	7/22/2000
CODELL, ORIGINA...		60	7,188.0	7,203.0	2/22/1992

Stimulations & Treatments

Bnch/...	Date	Zone	Primary Job Type
	2/24/1992	CODELL, ORIGINAL HOLE	DRILLING/COMPLETION - ORIGINAL

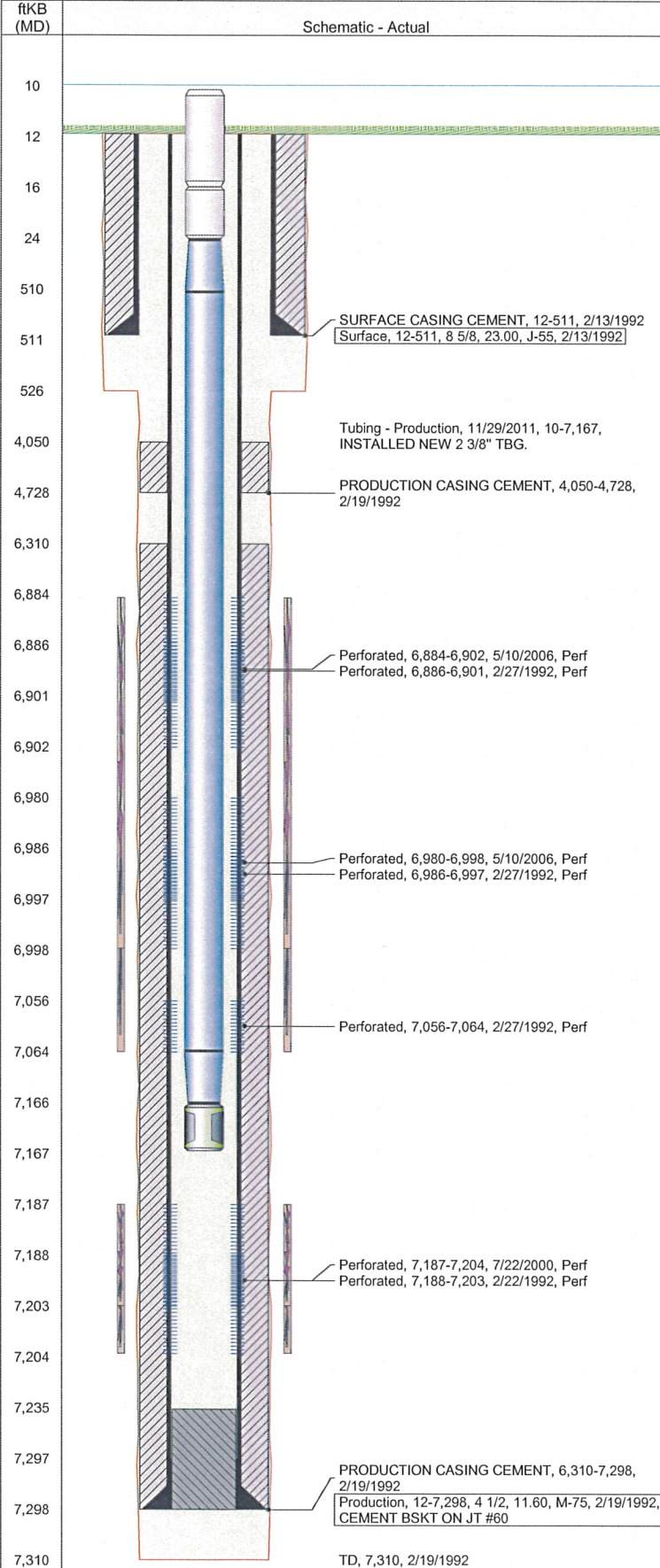
Comment

Total Add Amount	V (pumped) (gal)	V (slurry) (gal)	V (gas) (mcf)
Proppant 250500 lb; Proppant 100 MESH 10000 lb		85554	
Avg Treat Pressure (psi)	Max Treat Pressure (psi)	Avg Treat Rate (bbl/min)	Max Treat Rate (bbl/min)
3,500.0	4,820.0	13.00	15.10



Well Name: MCMILLEN TRUST 19-03G

Well Config: VERTICAL - ORIGINAL HOLE, 3/20/2012 11:50:01 AM



Stimulations & Treatments

Bnch/...	Date	Zone	Primary Job Type		
	2/28/1992	NIOBRARA, ORIGINAL HOLE	DRILLING/COMPLETION - ORIGINAL		
Comment					
Total Add Amount		V (pumped) (gal)	V (slurry) (gal)	V (gas) (mcf)	
Proppant 100 MESH 10000 lb; Proppant 163000 lb			71106		
Avg Treat Pressure (psi)	Max Treat Pressure (psi)	Avg Treat Rate (bbl/min)	Max Treat Rate (bbl/min)		
5,900.0	6,000.0	11.00	12.10		
Bnch/...	Date	Zone	Primary Job Type		
	7/26/2000	CODELL, ORIGINAL HOLE	RE-FRAC		
Comment					
Total Add Amount		V (pumped) (gal)	V (slurry) (gal)	V (gas) (mcf)	
Proppant Ottawa 245740 lb			134274		
Avg Treat Pressure (psi)	Max Treat Pressure (psi)	Avg Treat Rate (bbl/min)	Max Treat Rate (bbl/min)		
4,880.0	5,574.0	13.90	14.20		
Bnch/...	Date	Zone	Primary Job Type		
	6/8/2006	NIOBRARA, ORIGINAL HOLE	RE-FRAC		
Comment					
Total Add Amount		V (pumped) (gal)	V (slurry) (gal)	V (gas) (mcf)	
Proppant Ottawa 237520 lb; Proppant SB Excel 12000 lb			186312		
Avg Treat Pressure (psi)	Max Treat Pressure (psi)	Avg Treat Rate (bbl/min)	Max Treat Rate (bbl/min)		
4,512.0	4,656.0	49.10	50.20		
Bnch/...	Date	Zone	Primary Job Type		
	11/23/2011	NIOBRARA, ORIGINAL HOLE	TRI-FRAC		
Comment					
Total Add Amount		V (pumped) (gal)	V (slurry) (gal)	V (gas) (mcf)	
Proppant Ottawa 234659.594 lb		128157	138812		
Avg Treat Pressure (psi)	Max Treat Pressure (psi)	Avg Treat Rate (bbl/min)	Max Treat Rate (bbl/min)		
5,649.0	6,370.0	18.50	20.50		

Other In Hole

Run Date	Description	OD (in)	Top (ftKB)	Btm (ftKB)

Logs

Date	Type	Top (ftKB)	Btm (ftKB)
2/18/1992	COMPENSATED DENSITY	3,600.0	7,278.0
2/18/1992	INDUCTION	510.0	7,308.0
2/22/1992	CBL/CCL/GR	3,850.0	7,237.0