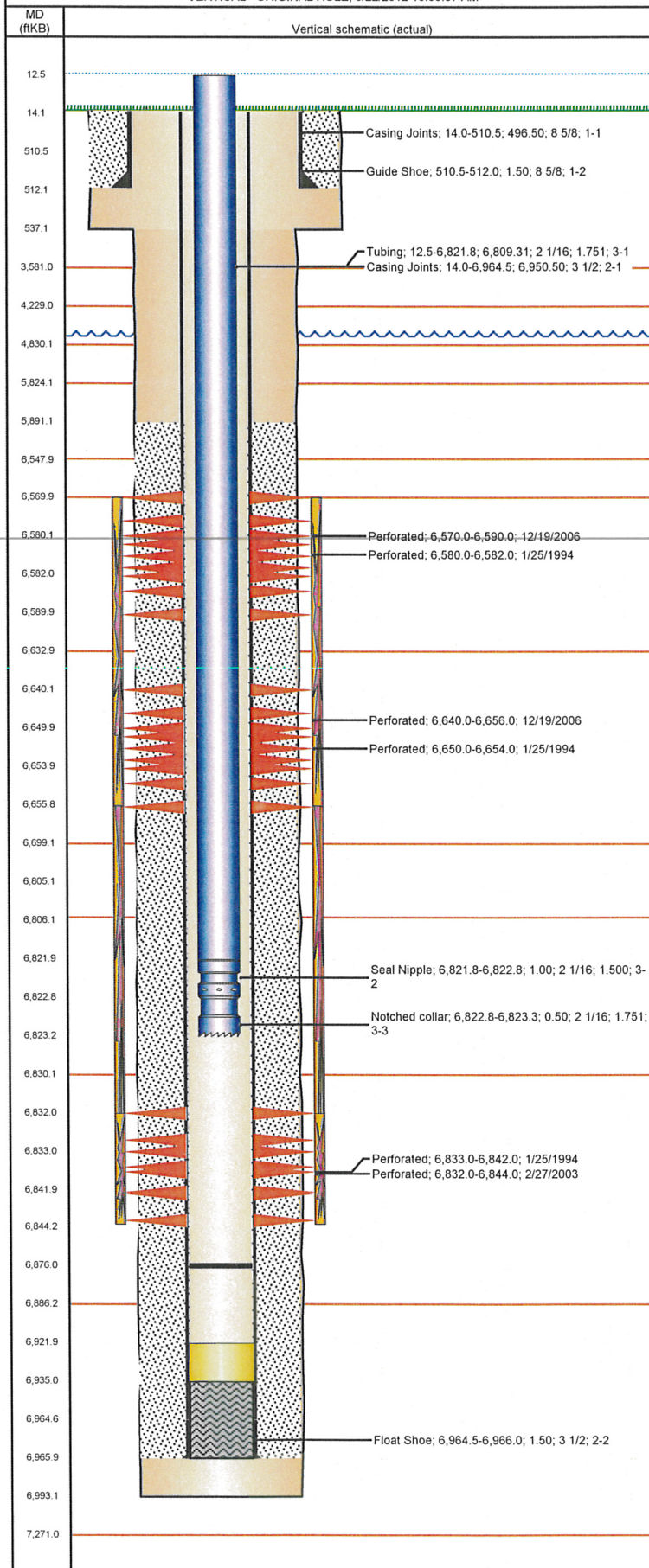


Frac Wellbore Schematic Report

Well Name: STATE 16-0914

VERTICAL - ORIGINAL HOLE, 5/22/2012 10:50:07 AM



Well Header

API 05-123-17741	Business Unit WATTENBERG	District 15	Well Config VERTICAL
Original KB Elevation (ft) 4,692.00	KB - GL / MSL (ftKB) 14.00	Spud Date 1/18/1994	P & A Date

Comment
LOCATION MOVED, NOT NOTED ON LOGS. LOGS HAVE KB 11'. 3/10/03:
DURING CODELL REFRAC, FRAC'D INTO CLEMONS 13-15

Directions To Well
55 & 44, N 3/10, W 150 YRDS, S INTO

Current PBTD (ftKB)
ORIGINAL HOLE - 6,876.0

Surface Location (Congressional)

Quarter 1	Quarter 2	Quarter 3	Quarter 4	Section	Township	Twship N...	Range	Rng E/W Dir
		NE	SE	16	4	N	64	W

Bottom Hole Location

North-South Distance (ft)	From N or S Line	East-West Distance (ft)	From E or W Line

Plug Back Total Depths

Date	Depth (ftKB)	Method	Com
1/22/1994	6,935.0		GUIDE SHOE
1/25/1994	6,887.0	CASED HOLE LOG	DEPTH LOGGER

Wellbore Sections

Section Des	Size (in)	Act Top (ftKB)	Act Btm (ftKB)
SURFACE	12 1/4	14.0	537.0
PRODUCTION	7 7/8	537.0	6,993.0

Zone Statuses

Zone Name	Status Date	Status	Job
NIOBRARA	2/27/1994	PR	DRILLING/COMPLETION - ORIGINAL, 1/18/1994 00:00
NIOBRARA	2/27/2007	PR	RE-FRAC, 12/14/2006 00:00
NIOBRARA	3/9/2007	PR	RE-FRAC, 12/14/2006 00:00
CODELL	2/27/1994	PR	DRILLING/COMPLETION - ORIGINAL, 1/18/1994 00:00
CODELL	3/11/2003	PR	RE-FRAC, 2/26/2003 00:00
CODELL	12/18/2006	SI	RE-FRAC, 12/14/2006 00:00
CODELL	3/9/2007	PR	RE-FRAC, 12/14/2006 00:00
CODELL	3/22/2012	PR	TRI-FRAC, 1/24/2012 06:00

Casing Strings

Csg Des	Run Date	OD (in)	Wt/Len (lb/ft)	Grade	Top (ftKB)	Set Depth (ftKB)
Surface	1/18/1994	8 5/8	23.00	M-50	14.0	512.0
Production	1/21/1994	3 1/2	7.70	B-70	14.0	6,966.0

Cement

Des	Top (ftKB)	Btm (ftKB)
SURFACE CASING CEMENT	14.0	512.0
PRODUCTION CASING CEMENT	5,891.0	6,966.0

Tubing Components

Item Des	OD (in)	Wt (lb/ft)	Grade	Jts	Len (ft)
Tubing	2 1/16	3.25	J-55	210	6,809.31
Seal Nipple	2 1/16	3.25	J-55	1	1.00
Notched collar	2 1/16	3.25	J-55	1	0.50

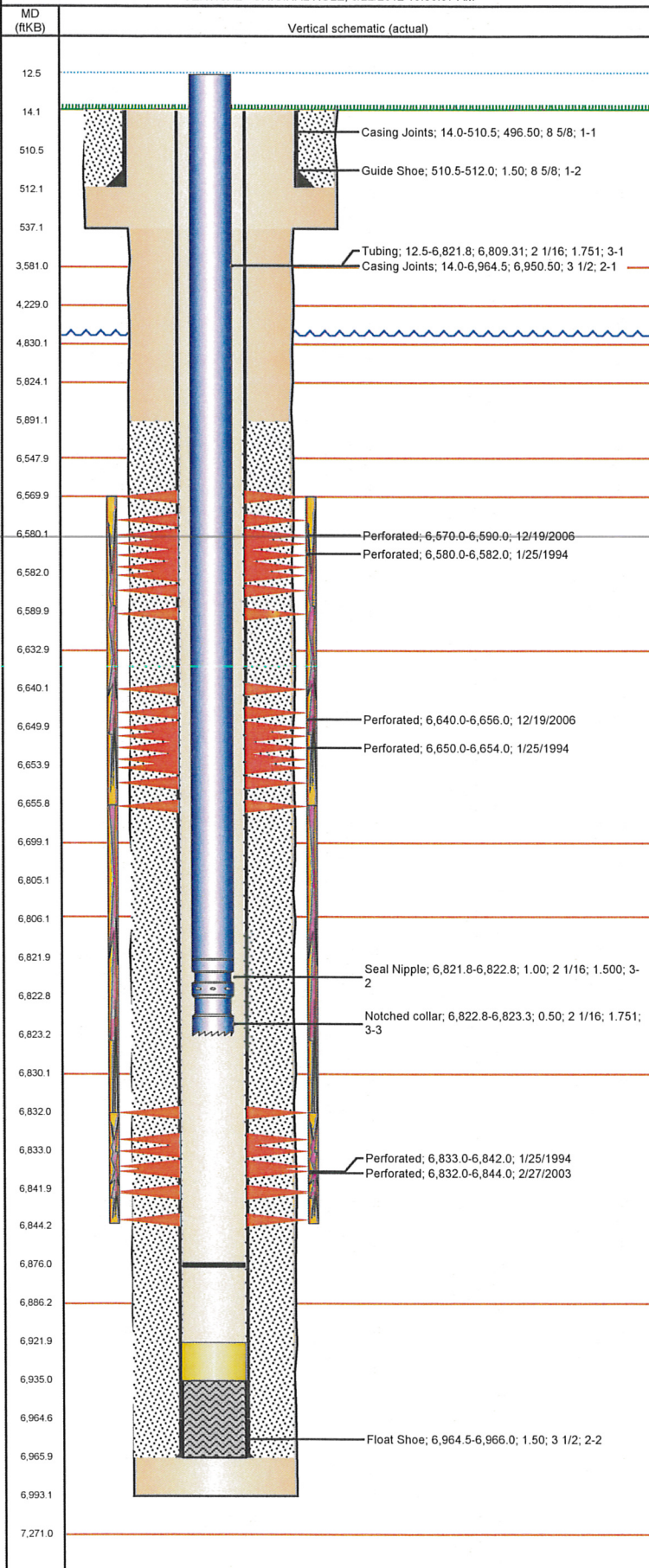
Perforation Data

Zone	Bnch/St g	Entered Shot Total	Top (ftKB)	Btm (ftKB)	Date
NIOBRARA, ORIGINAL HOLE	A	120	6,570.0	6,590.0	12/19/2006
NIOBRARA, ORIGINAL HOLE	A	2	6,580.0	6,582.0	1/25/1994
NIOBRARA, ORIGINAL HOLE	B	96	6,640.0	6,656.0	12/19/2006
NIOBRARA, ORIGINAL HOLE	B	4	6,650.0	6,654.0	1/25/1994
CODELL, ORIGINAL HOLE		48	6,832.0	6,844.0	2/27/2003
CODELL, ORIGINAL HOLE		9	6,833.0	6,842.0	1/25/1994

Frac Wellbore Schematic Report

Well Name: STATE 16-0914

VERTICAL - ORIGINAL HOLE, 5/22/2012 10:50:07 AM



Stimulations & Treatments					
Bnch/Stg	Date	Zone	Primary Job Type		
	1/26/1994	NIOBRARA-CODELL, ORIGINAL HOLE	DRILLING/COMPLETION - ORIGINAL		
Comment					
C/N LIMITED ENTRY					
Total Add Amount		Total Clean Volume...	Vol Slurry Tot (gal)	Vol Gas Tot (MCF)	
Proppant Bulk Sand 416000 lb			79623.61		
Avg Treat Pressure (psi)	Max Treat Pressure (psi)	Avg Treat Rate (bbl/min)	Max Treat Rate (bbl/min)		
4,700.0	5,000.0	23.00			
Bnch/Stg	Date	Zone	Primary Job Type		
	3/10/2003	CODELL, ORIGINAL HOLE	RE-FRAC		
Comment					
FRAC'D INTO CLEMONS 13-15					
Total Add Amount		Total Clean Volume...	Vol Slurry Tot (gal)	Vol Gas Tot (MCF)	
Proppant Ottawa 246300 lb			132762.00		
Avg Treat Pressure (psi)	Max Treat Pressure (psi)	Avg Treat Rate (bbl/min)	Max Treat Rate (bbl/min)		
7,030.0	7,641.0	14.40	14.70		
Bnch/Stg	Date	Zone	Primary Job Type		
	2/13/2007	NIOBRARA, ORIGINAL HOLE	RE-FRAC		
Comment					
20/40 sand with no resin sand					
Total Add Amount		Total Clean Volume...	Vol Slurry Tot (gal)	Vol Gas Tot (MCF)	
Proppant Ottawa 250500 lb		250320.01	170011.80		
Avg Treat Pressure (psi)	Max Treat Pressure (psi)	Avg Treat Rate (bbl/min)	Max Treat Rate (bbl/min)		
6,093.0	6,485.0	43.60	45.50		
Bnch/Stg	Date	Zone	Primary Job Type		
	2/12/2012	CODELL, ORIGINAL HOLE	TRI-FRAC		
Comment					
(CODELL TRI FRAC) GOT 500 BBL INTO PAD HAD TO SHUT DOWN XLINKER ISSUES,GOT BACK IN TO PAD THEN HAD TO SHUT DOWN AGAIN DUE TO THE SWEDGE ON WELL HEAD WAS LEAKING.THE 5 MIN ISIP 3373					
Total Add Amount		Total Clean Volume...	Vol Slurry Tot (gal)	Vol Gas Tot (MCF)	
Proppant Ottawa 246865.904 lb		119464.38	128921.10		
Avg Treat Pressure (psi)	Max Treat Pressure (psi)	Avg Treat Rate (bbl/min)	Max Treat Rate (bbl/min)		
7,267.0	7,718.0	15.40	16.00		
Other In Hole					
Run Date	Des		OD (in)	Top (ftKB)	Btm (ftKB)
3/7/2007	Sand Fill		3 1/4	6,922.0	6,935.0
Logs					
Date	Type		Top (ftKB)	Btm (ftKB)	
1/22/1994	COMPENSATED DENSITY		4,090.0	6,980.0	
1/22/1994	INDUCTION		514.0	6,982.0	
1/25/1994	CBL/CCL/GR		5,760.0	6,883.0	