
OXY GRAND JUNCTION EBUSINESS

**CC 697-04-59A
GRANDVALLEY
Garfield County , Colorado**

**Cement Surface Casing
03-Apr-2012**

Post Job Summary

The Road to Excellence Starts with Safety

Sold To #: 344034		Ship To #: 344034		Quote #:		Sales Order #: 9335415	
Customer: OXY GRAND JUNCTION EBUSINESS				Customer Rep: Benevides, Victor			
Well Name: CC			Well #: 697-04-59A			API/UWI #: 05-045-20709	
Field: GRANDVALLEY		City (SAP): ADDISON		County/Parish: Garfield		State: Colorado	
Lat: N 39.549 deg. OR N 39 deg. 32 min. 56.004 secs.				Long: W 108.23 deg. OR W -109 deg. 46 min. 11.64 secs.			
Contractor: OXY			Rig/Platform Name/Num: H&P 330				
Job Purpose: Cement Surface Casing							
Well Type: Development Well			Job Type: Cement Surface Casing				
Sales Person: HIMES, JEFFREY			Srvc Supervisor: YOUNG, JEREMY			MBU ID Emp #: 418013	

Job Personnel

HES Emp Name	Exp Hrs	Emp #	HES Emp Name	Exp Hrs	Emp #	HES Emp Name	Exp Hrs	Emp #
BURKE, BRENDAN Patrick	36.5	487782	GOWEN, WESLEY M	36.5	496205	VANALSTYNE, TROY L	14	420256
YOUNG, JEREMY R	36.5	418013	BECK, MICHAEL	22.5				

Equipment

HES Unit #	Distance-1 way	HES Unit #	Distance-1 way	HES Unit #	Distance-1 way	HES Unit #	Distance-1 way
10744549	120 mile	10867094	120 mile	10872429	120 mile	10897925	120 mile
11071463	120 mile	11259881	120 mile	11808847	120 mile	4904	120 mile
6374L	120 mile						

Job Hours

Date	On Location Hours	Operating Hours	Date	On Location Hours	Operating Hours	Date	On Location Hours	Operating Hours
04/01/2012	5	0	04/02/2012	24	11	04/03/2012	7.5	1
TOTAL		Total is the sum of each column separately						

Job

Formation Name	Formation Depth (MD)	Top	Bottom	Form Type	Job depth MD	Job Depth TVD	Water Depth	Perforation Depth (MD)	From	To
				BHST	2741. ft	2741. ft				
							Wk Ht Above Floor			
							. ft			

Job Times

Called Out	Date	Time	Time Zone
01 - Apr - 2012	15:00	MST	
On Location	01 - Apr - 2012	19:00	MST
Job Started	02 - Apr - 2012	06:03	MST
Job Completed	03 - Apr - 2012	05:45	MST
Departed Loc	03 - Apr - 2012	07:30	MST

Well Data

Description	New / Used	Max pressure psig	Size in	ID in	Weight lbm/ft	Thread	Grade	Top MD ft	Bottom MD ft	Top TVD ft	Bottom TVD ft
14 3/4" OPEN HOLE				14.75				.	2791.		
9 5/8" SURFACE CASING	Unknown		9.625	8.921	36.		J-55	.	2741.		

Tools and Accessories

Type	Size	Qty	Make	Depth	Type	Size	Qty	Make	Depth	Type	Size	Qty	Make
Guide Shoe					Packer					Top Plug	9.625	1	HES
Float Shoe					Bridge Plug					Bottom Plug			
Float Collar					Retainer					SSR plug set			
Insert Float										Plug Container	9.625	1	HES
Stage Tool										Centralizers			

Miscellaneous Materials

Gelling Agt	Conc	Surfactant	Conc	Acid Type	Qty	Conc	%
Treatment Fld	Conc	Inhibitor	Conc	Sand Type	Size	Qty	

Fluid Data

Fluid Data									
Stage/Plug #: 1									
Fluid #	Stage Type	Fluid Name	Qty	Qty uom	Mixing Density lbm/gal	Yield ft3/sk	Mix Fluid Gal/sk	Rate bbl/min	Total Mix Fluid Gal/sk

1	Fresh Water Spacer	FRESH WATER	10.00	bbl	8.33	.0	.0	2	
2	Gel Water Spacer	GEL WATER	20.00	bbl	8.34	.0	.0	4	
0.25 gal/bbl		LGC-36 UC, BULK (101582749)							
3	Fresh Water Spacer	FRESH WATER	10.00	bbl	8.33	.0	.0	4	
4	Lead Cement	HALCEM (TM) SYSTEM (452986)	1190.0	sacks	12.3	2.15	11.83	6	11.83
11.83 Gal		FRESH WATER							
5	Tail Cement	VERSACEM (TM) SYSTEM (452010)	170.0	sacks	12.8	2.07	10.67	6	10.67
10.67 Gal		FRESH WATER							
6	Fresh Water Displacement	FRESH WATER	208.00	bbl	8.34	.0	.0	8	
7	Topout Cement	HALCEM (TM) SYSTEM (452986)	960.0	sacks	12.5	1.97	10.96	3	10.96
10.96 Gal		FRESH WATER							
Calculated Values		Pressures		Volumes					
Displacement	208.2	Shut In: Instant		Lost Returns	YES	Cement Slurry	855.2	Pad	
Top Of Cement	SURFACE	5 Min		Cement Returns	0.5	Actual Displacement	208.2	Treatment	
Frac Gradient		15 Min		Spacers	40	Load and Breakdown		Total Job	1113.4
Rates									
Circulating		Mixing	6	Displacement	8	Avg. Job	7		
Cement Left In Pipe	Amount	47.21 ft	Reason	Shoe Joint					
Frac Ring # 1 @	ID	Frac ring # 2 @	ID	Frac Ring # 3 @	ID	Frac Ring # 4 @	ID		
The Information Stated Herein Is Correct				Customer Representative Signature					

The Road to Excellence Starts with Safety

Sold To #: 344034	Ship To #: 344034	Quote #:	Sales Order #: 9335415
Customer: OXY GRAND JUNCTION EBUSINESS		Customer Rep: Benevides, Victor	
Well Name: CC		Well #: 697-04-59A	API/UWI #: 05-045-20709
Field: GRANDVALLEY	City (SAP): ADDISON	County/Parish: Garfield	State: Colorado
Legal Description:			
Lat: N 39.549 deg. OR N 39 deg. 32 min. 56.004 secs.		Long: W 108.23 deg. OR W -109 deg. 46 min. 11.64 secs.	
Contractor: OXY		Rig/Platform Name/Num: H&P 330	
Job Purpose: Cement Surface Casing			Ticket Amount:
Well Type: Development Well		Job Type: Cement Surface Casing	
Sales Person: HIMES, JEFFREY		Srvc Supervisor: YOUNG, JEREMY	MBU ID Emp #: 418013

Activity Description	Date/Time	Cht #	Rate bbl/min	Volume bbl		Pressure psig		Comments
				Stage	Total	Tubing	Casing	
Call Out	04/01/2012 15:00							
Pre-Convoy Safety Meeting	04/01/2012 16:50							WITH ALL HES PERSONNEL
Crew Leave Yard	04/01/2012 17:00							
Arrive At Loc	04/01/2012 19:00							RIG WAS TRIPPING OUT DRILL PIPE UPON HES ARRIVAL
Assessment Of Location Safety Meeting	04/02/2012 04:30							WITH ALL HES PERSONNEL
Other	04/02/2012 04:40							SPOT EQUIPMENT
Pre-Rig Up Safety Meeting	04/02/2012 04:50							WITH ALL HES PERSONNEL
Rig-Up Equipment	04/02/2012 05:00							
Pre-Job Safety Meeting	04/02/2012 05:45							WITH ALL PERSONNEL ON LOCATION
Start Job	04/02/2012 06:03							TD 2791 FT, TP 2741 FT, SHOE 47.21 FT, HOLE 14 3/4 IN, MUD WT 9.4 PPG, CSG 9 5/8 IN 36 LB/FT J-55
Other	04/02/2012 06:04		2	2			22.0	FILL LINES WITH FRESH WATER
Test Lines	04/02/2012 06:07							TEST LINES TO 3600 PSI. PRESSURE HOLDING
Pump Spacer 1	04/02/2012 06:13		2	10			30.0	FRESH WATER
Pump Spacer 2	04/02/2012 06:18		4	20			46.0	GEL WATER
Pump Spacer 1	04/02/2012 06:24		4	10			45.0	FRESH WATER

Activity Description	Date/Time	Cht #	Rate bbl/ min	Volume bbl		Pressure psig		Comments
				Stage	Total	Tubing	Casing	
Pump Lead Cement	04/02/2012 06:27		6	455.7			375.0	1190 SKS AT 12.3 PPG, 2.15 FT ³ /SK, 11.83 GAL/SK. 7 BOXES OF TUFF FIBER IN LEAD CEMENT
Pump Tail Cement	04/02/2012 07:46		6	62.7				170 SKS AT 12.8 PPG, 2.07 FT ³ /SK, 10.67 GAL/SK
Shutdown	04/02/2012 08:00							
Drop Top Plug	04/02/2012 08:01							PLUG LAUNCHED
Pump Displacement	04/02/2012 08:02		8	198.2			370.0	FRESH WATER
Slow Rate	04/02/2012 08:29		2	10			205.0	SLOW RATE 10 BBLS PRIOR TO CALCULATED DISPLACEMENT
Bump Plug	04/02/2012 08:33		2		208.2		740.0	PLUG BUMPED
Check Floats	04/02/2012 08:49							FLOATS HOLDING. RETURNED 1 BBL H ₂ O TO PUMP
Pressure Test	04/02/2012 08:52						1500. 0	PRESSURE TEST CASING TO 1500 PSI FOR 30 MIN AS PER COMPANY REP
Other	04/02/2012 09:26							RELEASE PRESSURE
Pump Water	04/02/2012 09:36		1.5	10		280.0		PUMP SUGAR WATER DOWN PARASITE STRING
Shutdown	04/02/2012 09:41							
End Job	04/02/2012 09:42							JOB WAS PUMPED OFFLINE THROUGH PLUG CONTAINER WITH QUICK LATCH. PIPE WAS STATIC DURING JOB. NO CIRCULATION THROUGHOUT JOB. HES DID NOT RETURN ANY CEMENT TO SURFACE
Start Job	04/02/2012 10:47							TOPOUT #1
Activity Description	Date/Time	Cht	Rate bbl/ min	Volume bbl		Pressure psig		Comments

		#		Stage	Total	Tubing	Casing	
Pump Water	04/02/2012 10:48		2	2		33.0		PUMP WATER AHEAD TO ENSURE LINES ARE CLEAR
Shutdown	04/02/2012 10:49							SHUTDOWN TO MIX UP CEMENT
Pump Cement	04/02/2012 10:51		3	28.1		60.0		80 SKS AT 12.5 PPG, 1.97 FT3/SK, 10.96 GAL/SK
Shutdown	04/02/2012 11:00							
End Job	04/02/2012 11:00							HES DID NOT RETURN CEMENT TO SURFACE
Start Job	04/02/2012 13:03							TOPOUT #2
Pump Water	04/02/2012 13:04		1	1		15.0		PUMP WATER AHEAD TO ENSURE LINES ARE CLEAR
Shutdown	04/02/2012 13:05							SHUTDOWN TO MIX UP CEMENT TUB
Pump Cement	04/02/2012 13:10		3	50.5		105.0		144 SKS AT 12.5 PPG, 1.97 FT3/SK, 10.96 GAL/SK
Pump Water	04/02/2012 13:27		3	1		75.0		PUMP WATER BEHIND TO CLEAR LINES
Shutdown	04/02/2012 13:28							
End Job	04/02/2012 13:29							HES RETURNED NO CEMENT TO SURFACE
Start Job	04/02/2012 15:27							TOPOUT #3
Pump Water	04/02/2012 15:28		1	1		15.0		PUMP WATER AHEAD TO ENSURE LINES ARE CLEAR
Shutdown	04/02/2012 15:29							SHUTDOWN TO MIX UP CEMENT
Pump Cement	04/02/2012 15:34		3	70.2		119.0		200 SKS AT 12.5 PPG, 1.97 FT3/SK, 10.96 GAL/SK
Pump Water	04/02/2012 15:58		3	1		91.0		PUMP WATER BEHIND TO CLEAR LINES
Shutdown	04/02/2012 15:58							
End Job	04/02/2012 15:59							HES RETURNED NO CEMENT TO SURFACE
Start Job	04/02/2012 17:56							TOPOUT #4
Pump Water	04/02/2012 17:57		1	1		3.0		PUMP WATER AHEAD TO ENSURE LINES ARE CLEAR
Shutdown	04/02/2012 17:58							SHUTDOWN TO MIX UP CEMENT

Activity Description	Date/Time	Cht #	Rate bbl/ min	Volume bbl		Pressure psig		Comments
				Stage	Total	Tubing	Casing	
Pump Cement	04/02/2012 18:01		3	68.8		105.0		196 SKS AT 12.5 PPG, 1.97 FT3/SK, 10.96 GAL/SK
Pump Water	04/02/2012 18:28		3	1		75.0		PUMP WATER BEHIND TO CLEAR LINES
Shutdown	04/02/2012 18:28							
End Job	04/02/2012 18:29							HES RETURNED NO CEMENT TO SURFACE. HES HAD AN ADDITIONAL 340 SKS TOPOUT DELIVERED TO LOCATION
Start Job	04/02/2012 21:02							TOPOUT #5
Pump Water	04/02/2012 21:03		1	1		13.0		PUMP WATER AHEAD TO ENSURE LINES ARE CLEAR
Shutdown	04/02/2012 21:04							SHUTDOWN TO MIX UP CEMENT
Pump Cement	04/02/2012 21:08		3	59.6		85.0		170 SKS AT 12.5 PPG, 1.97 FT3/SK, 10.96 GAL/SK
Pump Water	04/02/2012 21:30		3	1		51.0		PUMP WATER BEHIND TO CLEAR LINES
Shutdown	04/02/2012 21:30							
End Job	04/02/2012 21:31							HES RETURNED NO CEMENT TO SURFACE
Start Job	04/02/2012 23:15							TOPOUT #6
Pump Water	04/02/2012 23:16		1	1		25.0		PUMP WATER AHEAD TO ENSURE LINES ARE CLEAR
Shutdown	04/02/2012 23:17							SHUTDOWN TO MIX UP CEMENT
Pump Cement	04/02/2012 23:19		3	53		85.0		170 SKS AT 12.5 PPG, 1.97 FT3/SK, 10.96 GAL/SK
Shutdown	04/02/2012 23:39							SHUTDOWN WHEN CEMENT REACHED SURFACE TO SEE IF IT WOULD FALL BACK.
Resume	04/02/2012 23:44		3	6.6	59.6	80.0		RESUME PUMPING AFTER CEMENT FELL BACK

Activity Description	Date/Time	Cht #	Rate bbl/min	Volume bbl		Pressure psig		Comments
				Stage	Total	Tubing	Casing	
Pump Water	04/02/2012 23:47		3	1		50.0		PUMP WATER BEHIND TO CLEAR LINES
Shutdown	04/02/2012 23:48							
End Job	04/02/2012 23:49							HES RETURNED 0.5 BBL CEMENT TO SURFACE BUT FELL BACK.
Comment	04/03/2012 05:44							HES HAD AN ADDITIONAL 500 SKS TOPOUT DELIVERED TO LOCATION. CREW RELEASED BEFORE TOPOUT GOT THERE BUT TOPOUT WAS CHARGED FOR BECAUSE IT WILL BE USED ON NEXT JOB
Comment	04/03/2012 05:45							CREW RELEASED FROM LOCATION BY COMPANY REP AT 05:45. HES SAW CEMENT TO SURFACE ON TOPOUT #6 AND COMPANY REP DECIDED TO FINISH TOPPING OFF WELL ON NEXT JOB.
Pre-Rig Down Safety Meeting	04/03/2012 05:50							WITH ALL HES PERSONNEL
Rig-Down Equipment	04/03/2012 06:00							
Pre-Convoy Safety Meeting	04/03/2012 07:30							WITH ALL HES PERSONNEL
Crew Leave Location	04/03/2012 07:30							
Comment	04/03/2012 07:31							THANK YOU FOR USING HALLIBURTON CEMENT DEPARTMENT. JEREMY YOUNG AND CREW.

HALLIBURTON

Water Analysis Report

Company: OXY

Submitted by: JEREMY YOUNG

Attention: LAB

Lease CC

Well # 697-04-59A

Date: 4/2/2012

Date Rec.:

S.O.# 9335415

Job Type: SURFACE

Specific Gravity	<i>MAX</i>	1
pH	<i>8</i>	8
Potassium (K)	<i>5000</i>	200 Mg / L
Calcium (Ca)	<i>500</i>	120 Mg / L
Iron (FE2)	<i>300</i>	0 Mg / L
Chlorides (Cl)	<i>3000</i>	0 Mg / L
Sulfates (SO ₄)	<i>1500</i>	UNDER 200 Mg / L
Chlorine (Cl ₂)		0 Mg / L
Temp	<i>40-80</i>	60 Deg
Total Dissolved Solids		460 Mg / L

Respectfully: JEREMY YOUNG

Title: CEMENTING SUPERVISOR

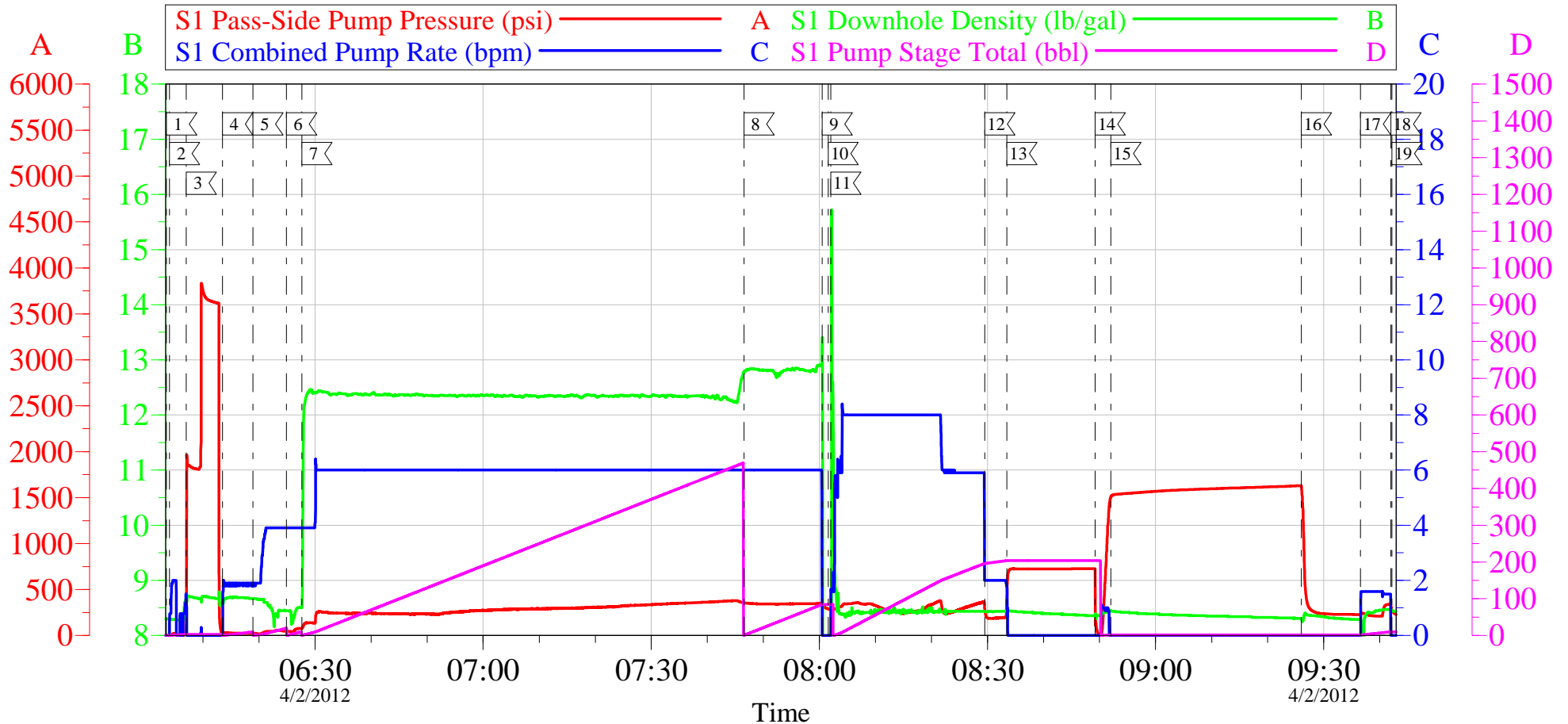
Location: Grand Junction, CO

NOTICE:

This report is limited to the described sample tested. Any person using or relying on this report agrees that Halliburton shall not be liable for any loss or damage whether due to act or omission resulting from such report or its use.

OXY - CC 697-04-59A

9 5/8 SURFACE



Local Event Log

1 START JOB	06:03:30	2 FILL LINES	06:04:01	3 TEST LINES	06:07:01
4 PUMP H2O SPACER 1	06:13:29	5 PUMP GEL SPACER	06:18:55	6 PUMP H2O SPACER 2	06:24:54
7 PUMP LEAD CEMENT	06:27:40	8 PUMP TAIL CEMENT	07:46:32	9 SHUTDOWN	08:00:30
10 DROP TOP PLUG	08:01:34	11 PUMP DISPLACEMENT	08:02:01	12 SLOW RATE	08:29:31
13 BUMP PLUG	08:33:27	14 CHECK FLOATS	08:49:13	15 PRESSURE TEST CASING	08:52:00
16 RELEASE PRESSURE	09:26:00	17 PUMP DOWN PARASITE STRING	09:36:35	18 SHUTDOWN	09:41:59
19 END JOB	09:42:10				

Customer: OXY
Well Description: CC 697-04-59A
Company Rep: VICTOR BENEVIDES

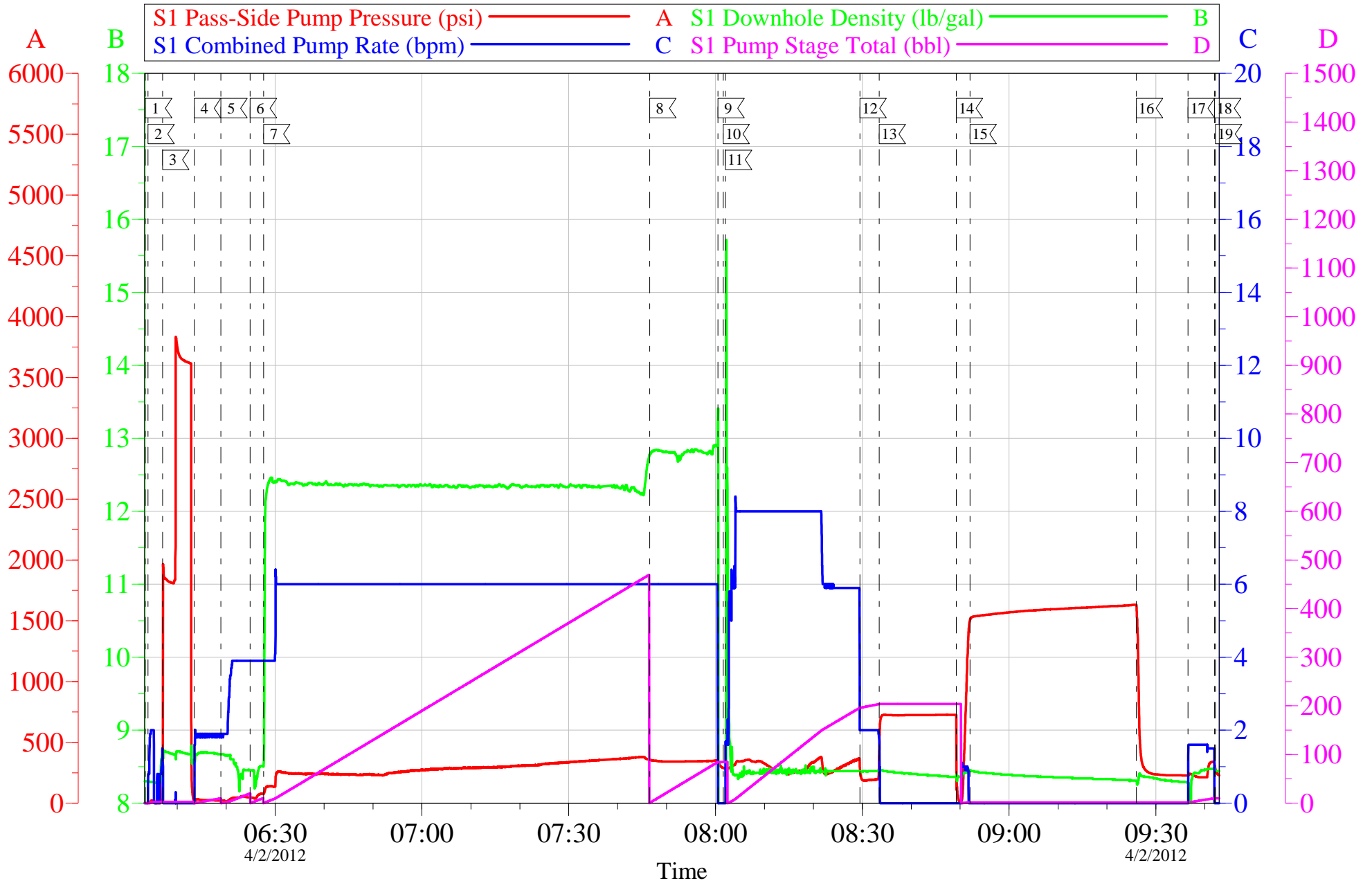
Job Date: 02-Apr-2012
Job Type: SURFACE
Cement Supervisor: JEREMY YOUNG

Sales Order #: 9335415
ADC Used: YES
Elite #7: BRENDAN BURKE

OptiCem v6.4.10
02-Apr-12 09:51

OXY - CC 697-04-59A

9 5/8 SURFACE



Customer: OXY
Well Description: CC 697-04-59A
Company Rep: VICTOR BENEVIDES

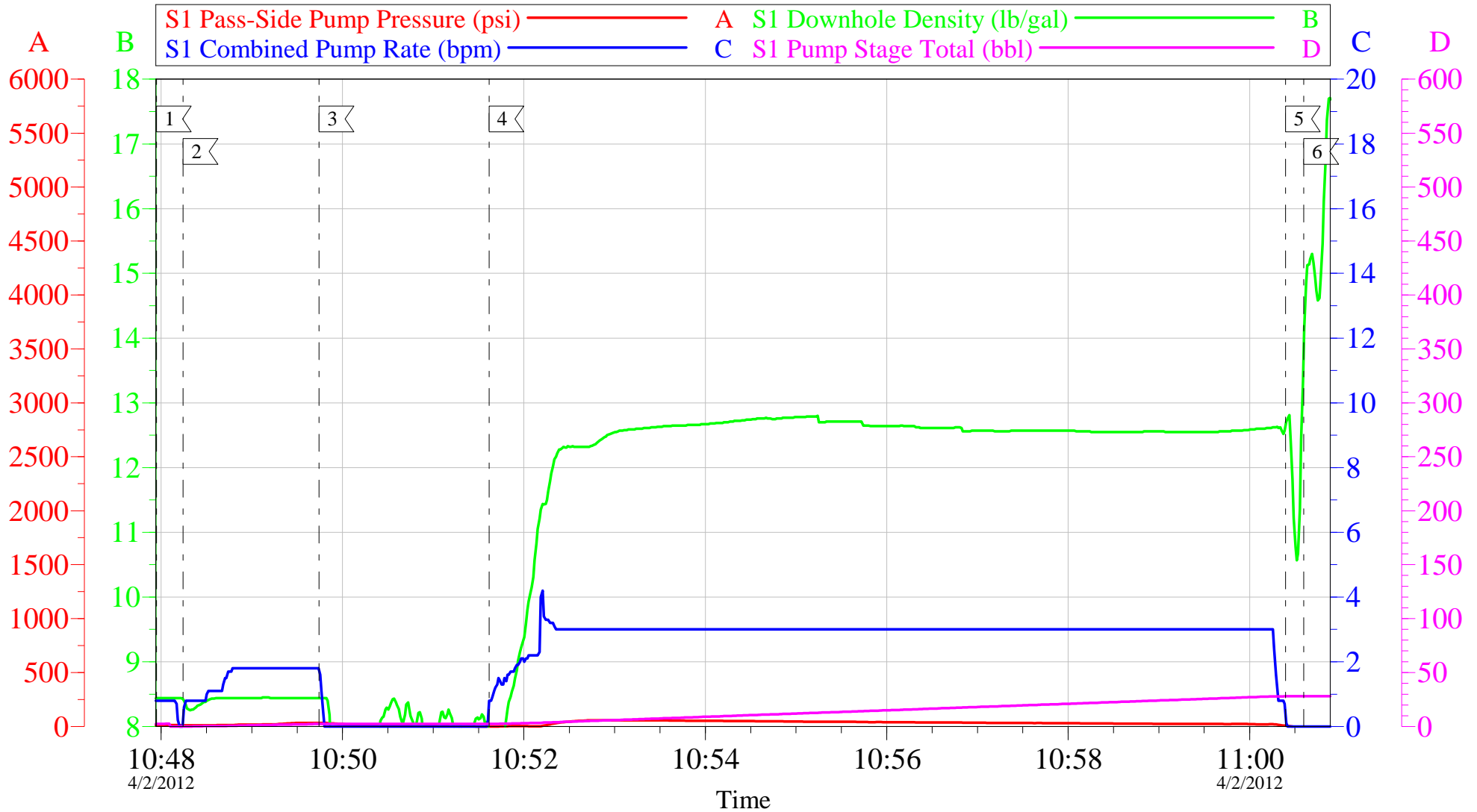
Job Date: 02-Apr-2012
Job Type: SURFACE
Cement Supervisor: JEREMY YOUNG

Sales Order #: 9335415
ADC Used: YES
Elite #7: BRENDAN BURKE

OptiCem v6.4.10
02-Apr-12 09:53

OXY - CC 697-04-59A

TOPOUT #1



Local Event Log

1	START JOB	10:47:57	2	PUMP WATER AHEAD	10:48:15	3	SHUTDOWN	10:49:44
4	PUMP CEMENT	10:51:37	5	SHUTDOWN	11:00:24	6	END JOB	11:00:36

Customer: OXY
Well Description: CC 697-04-59A
Company Rep: VICTOR BENEVIDES

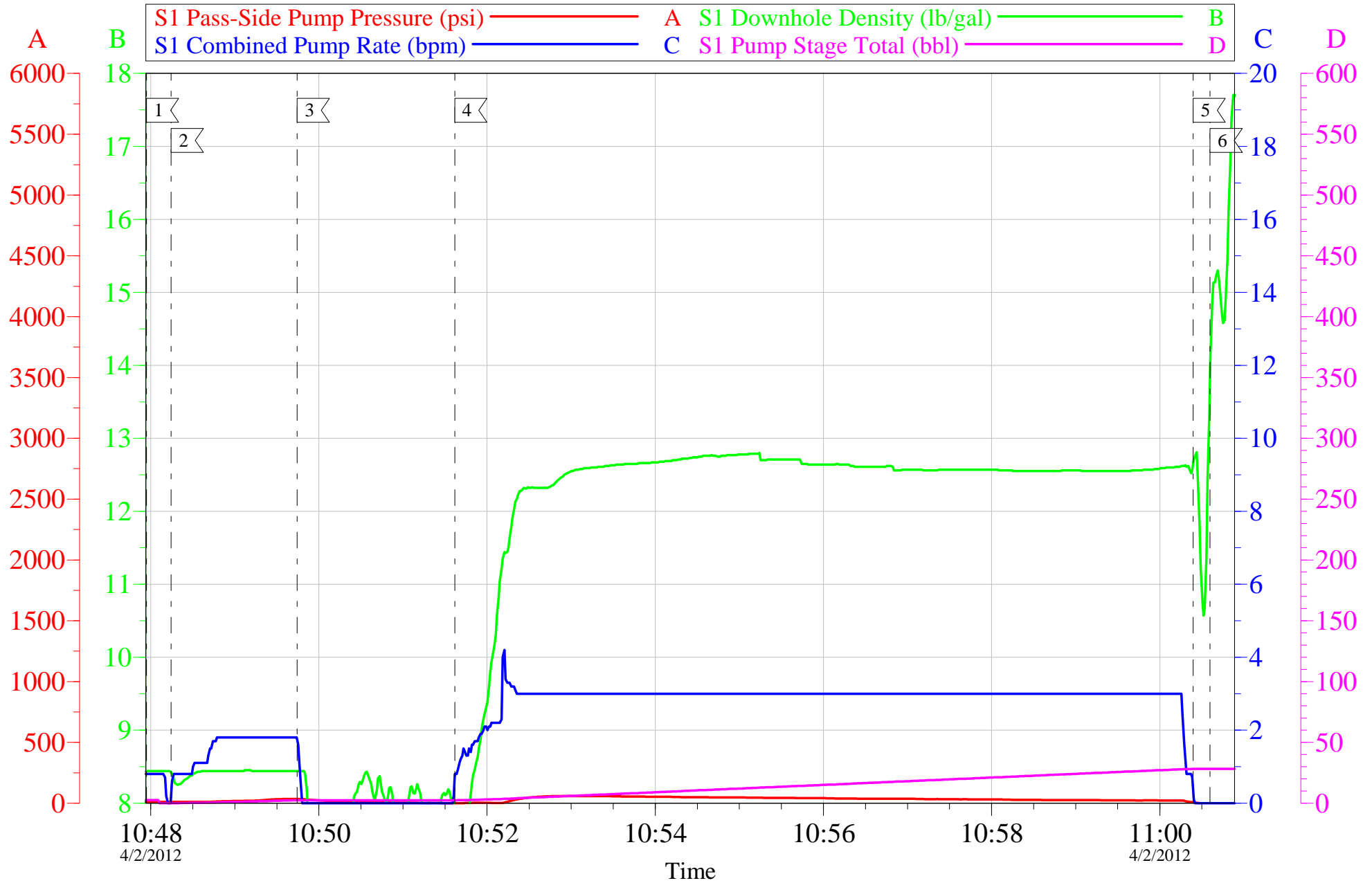
Job Date: 02-Apr-2012
Job Type: TOPOUT
Cement Supervisor: JEREMY YOUNG

Sales Order #: 9335415
ADC Used: YES
Elite #7: BRENDAN BURKE

OptiCem v6.4.10
02-Apr-12 11:11

OXY - CC 697-04-59A

TOPOUT #1

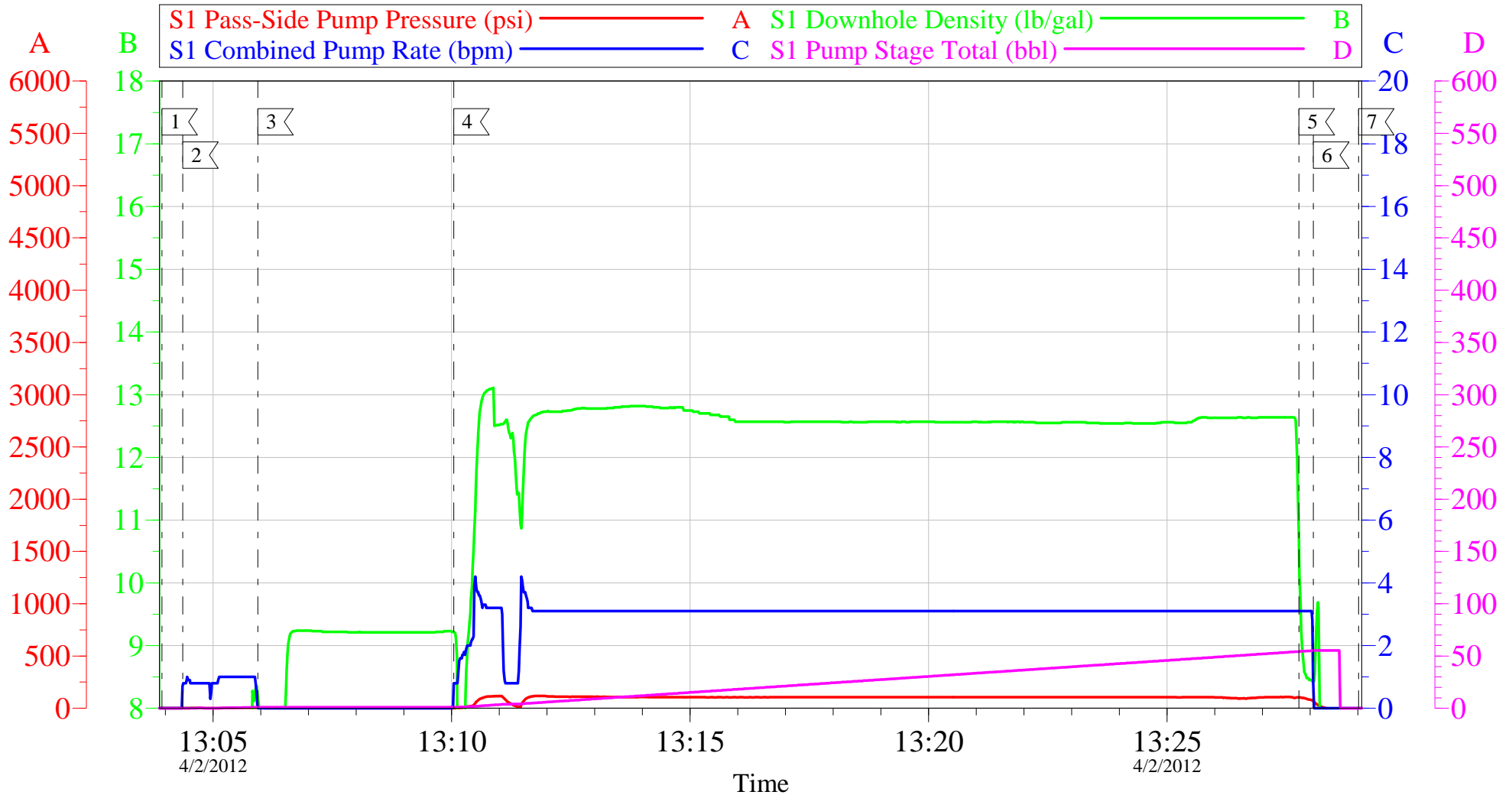


Customer: OXY	Job Date: 02-Apr-2012	Sales Order #: 9335415
Well Description: CC 697-04-59A	Job Type: TOPOUT	ADC Used: YES
Company Rep: VICTOR BENEVIDES	Cement Supervisor: JEREMY YOUNG	Elite #7: BRENDAN BURKE

OptiCem v6.4.10
02-Apr-12 11:11

OXY - CC 697-04-59A

TOPOUT #2



Local Event Log

1 START JOB	13:03:56	2 PUMP WATER AHEAD	13:04:22	3 SHUTDOWN	13:05:56
4 PUMP CEMENT	13:10:03	5 PUMP WATER BEHIND	13:27:46	6 SHUTDOWN	13:28:04
7 END JOB	13:29:01				

Customer: OXY
Well Description: CC 697-04-59A
Company Rep: VICTOR BENEVIDES

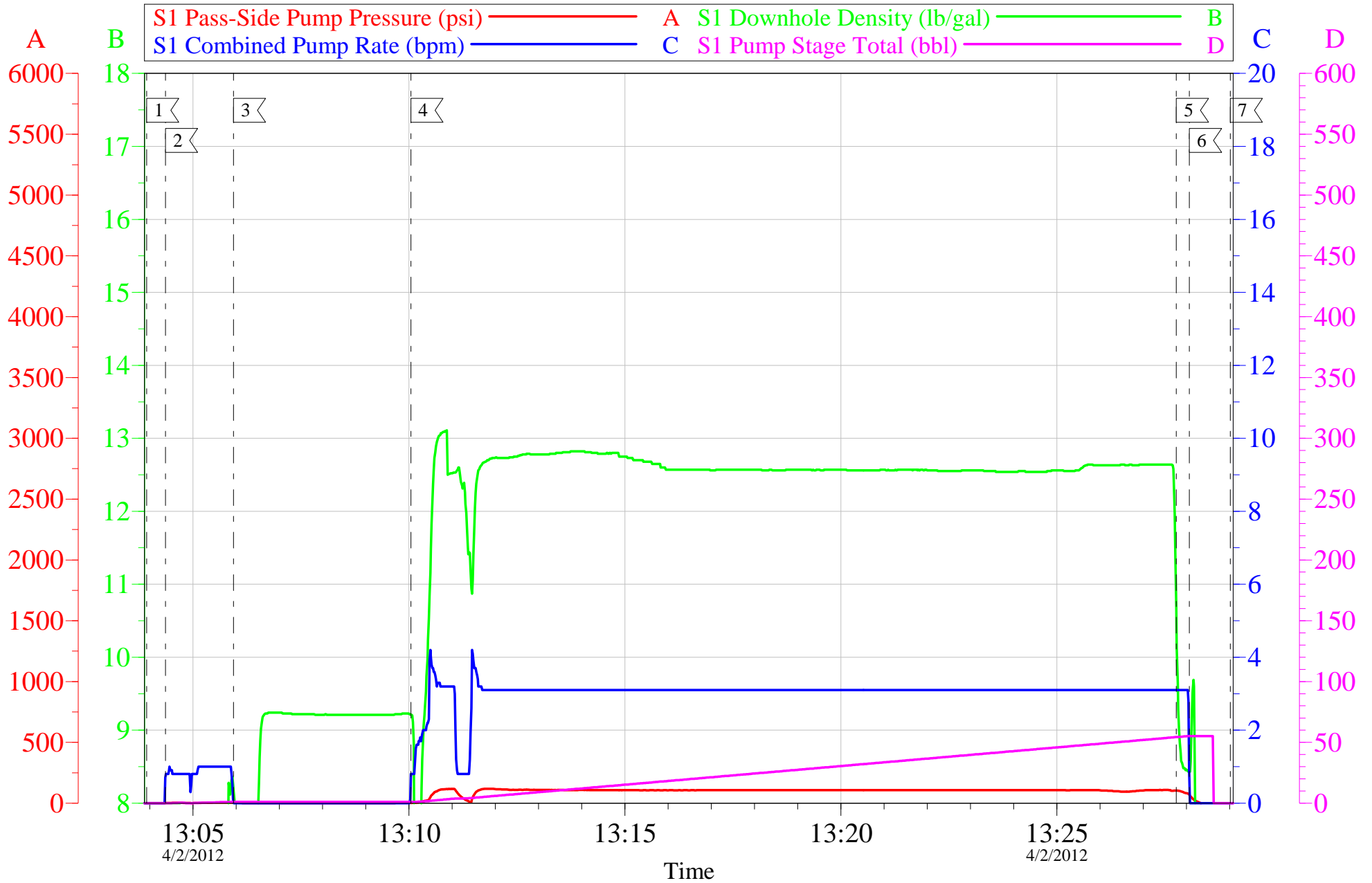
Job Date: 02-Apr-2012
Job Type: TOPOUT
Cement Supervisor: JEREMY YOUNG

Sales Order #: 9335415
ADC Used: YES
Elite #7: BRENDAN BURKE

OptiCem v6.4.10
02-Apr-12 13:33

OXY - CC 697-04-59A

TOPOUT #2



Customer: OXY
Well Description: CC 697-04-59A
Company Rep: VICTOR BENEVIDES

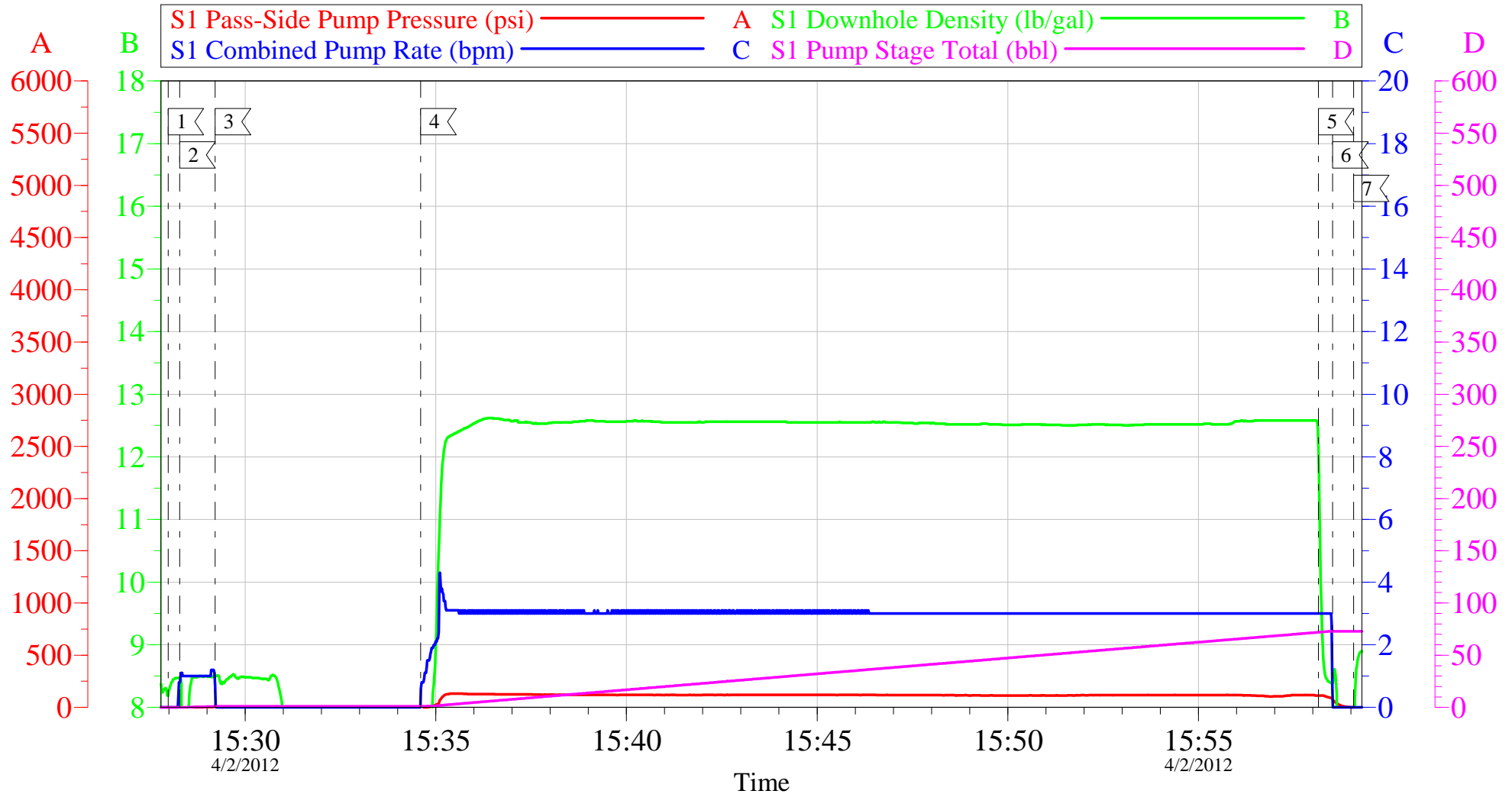
Job Date: 02-Apr-2012
Job Type: TOPOUT
Cement Supervisor: JEREMY YOUNG

Sales Order #: 9335415
ADC Used: YES
Elite #7: BRENDAN BURKE

OptiCem v6.4.10
02-Apr-12 13:33

OXY - CC 697-04-59A

TOPOUT #3



Local Event Log

1 START JOB	15:27:59	2 PUMP WATER AHEAD	15:28:17	3 SHUTDOWN	15:29:13
4 PUMP CEMENT	15:34:36	5 PUMP WATER BEHIND	15:58:09	6 SHUTDOWN	15:58:31
7 END JOB	15:59:04				

Customer: OXY
Well Description: CC 697-04-59A
Company Rep: VICTOR BENEVIDES

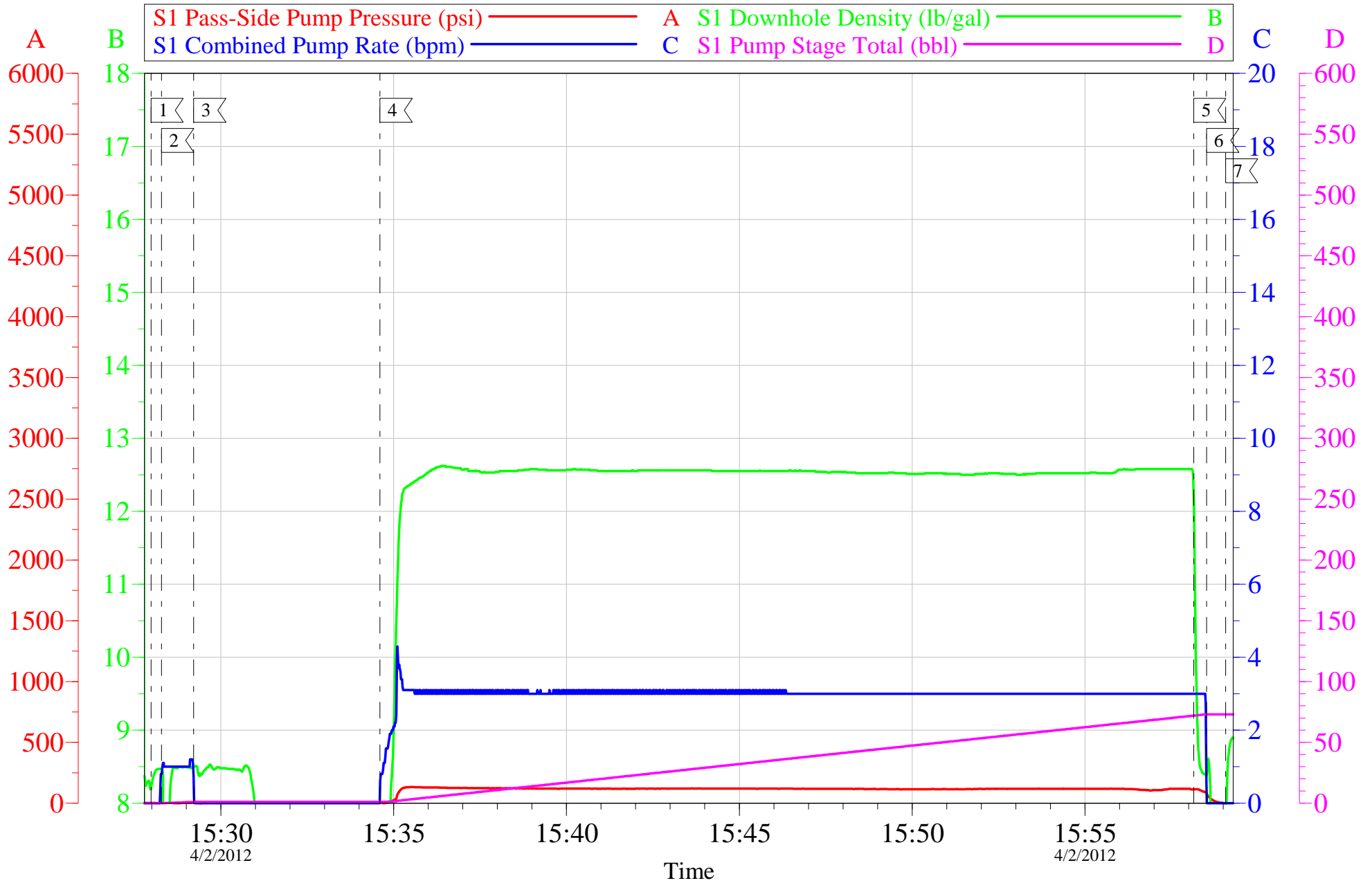
Job Date: 02-Apr-2012
Job Type: TOPOUT
Cement Supervisor: JEREMY YOUNG

Sales Order #: 9335415
ADC Used: YES
Elite #7: BRENDAN BURKE

OptiCem v6.4.10
02-Apr-12 16:04

OXY - CC 697-04-59A

TOPOUT #3



Customer: OXY
Well Description: CC 697-04-59A
Company Rep: VICTOR BENEVIDES

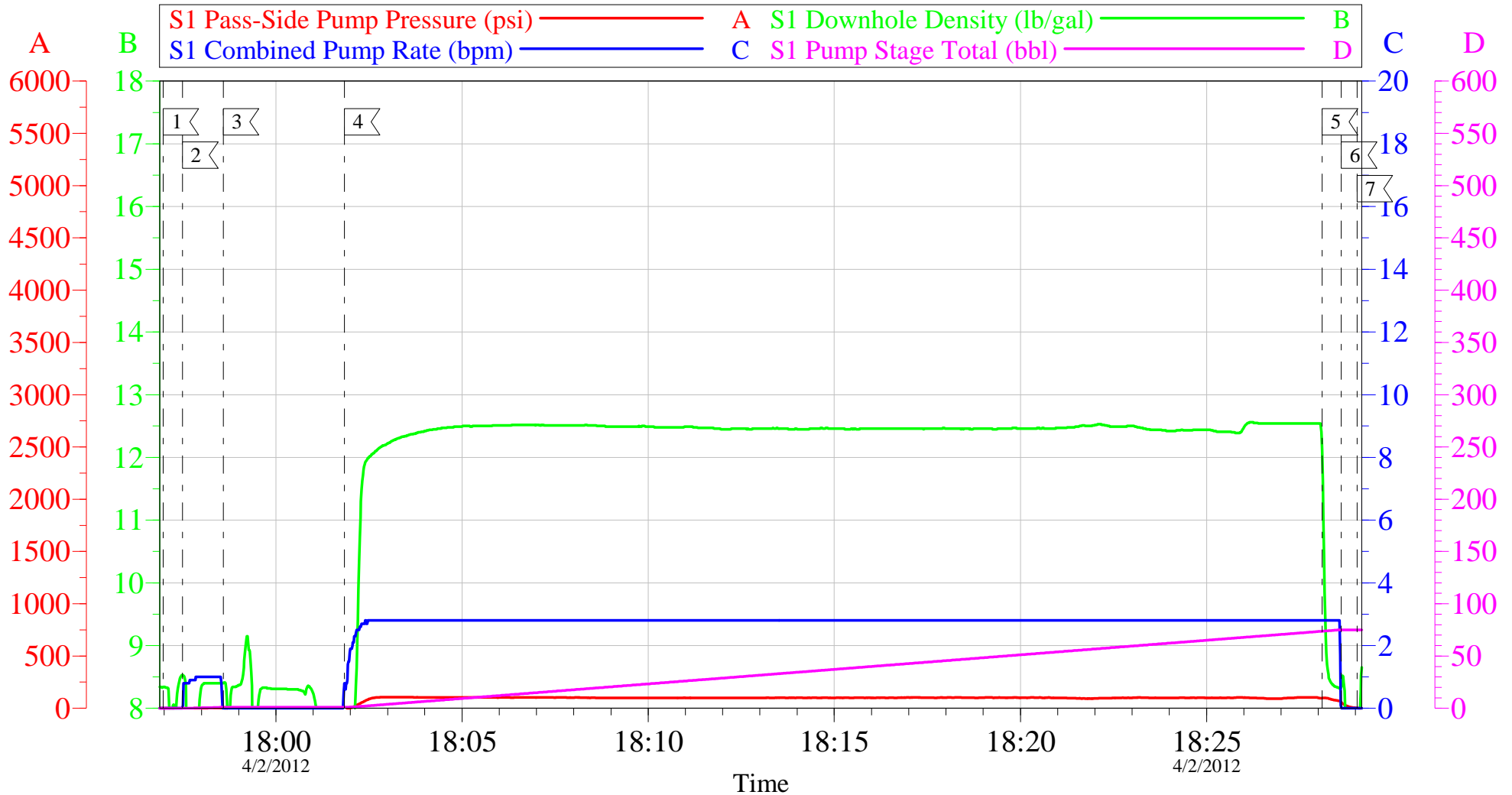
Job Date: 02-Apr-2012
Job Type: TOPOUT
Cement Supervisor: JEREMY YOUNG

Sales Order #: 9335415
ADC Used: YES
Elite #7: BRENDAN BURKE

OptiCem v6.4.10
02-Apr-12 16:04

OXY - CC 697-04-59A

TOPOUT #4



Local Event Log

1 START JOB	17:56:58	2 PUMP WATER AHEAD	17:57:29	3 SHUTDOWN	17:58:35
4 PUMP CEMENT	18:01:50	5 PUMP WATER BEHIND	18:28:06	6 SHUTDOWN	18:28:37
7 END JOB	18:29:03				

Customer: OXY
Well Description: CC 697-04-59A
Company Rep: VICTOR BENEVIDES

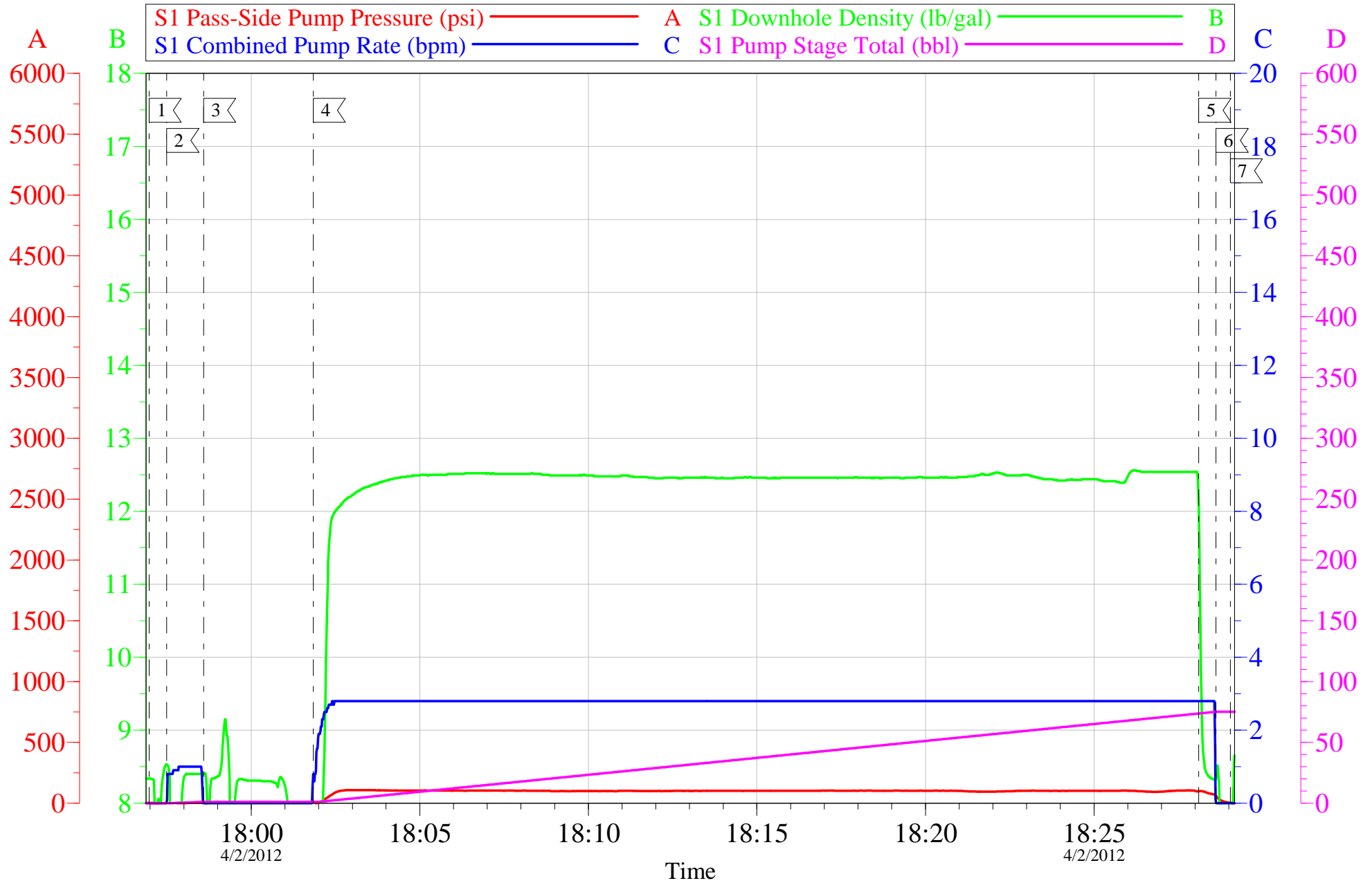
Job Date: 02-Apr-2012
Job Type: TOPOUT
Cement Supervisor: JEREMY YOUNG

Sales Order #: 9335415
ADC Used: YES
Elite #7: BRENDAN BURKE

OptiCem v6.4.10
02-Apr-12 18:36

OXY - CC 697-04-59A

TOPOUT #4



Customer: OXY
Well Description: CC 697-04-59A
Company Rep: VICTOR BENEVIDES

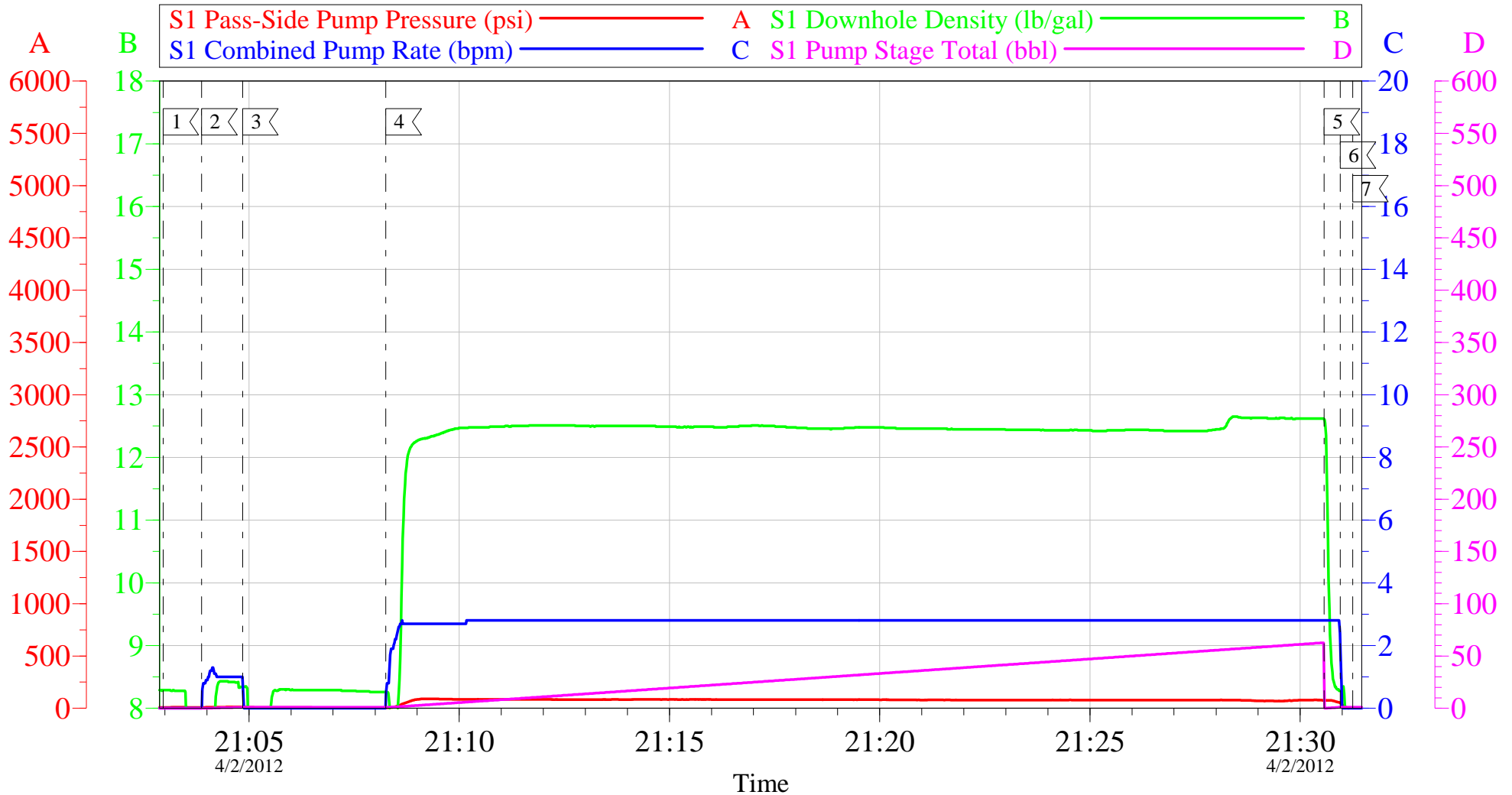
Job Date: 02-Apr-2012
Job Type: TOPOUT
Cement Supervisor: JEREMY YOUNG

Sales Order #: 9335415
ADC Used: YES
Elite #7: BRENDAN BURKE

OptiCem v6.4.10
02-Apr-12 18:36

OXY - CC 697-04-59A

TOPOUT #5



Local Event Log

1 START JOB	21:02:57	2 PUMP WATER AHEAD	21:03:52	3 SHUTDOWN	21:04:51
4 PUMP CEMENT	21:08:15	5 PUMP WATER BEHIND	21:30:34	6 SHUTDOWN	21:30:57
7 END JOB	21:31:15				

Customer: OXY
Well Description: CC 697-04-59A
Company Rep: VICTOR BENEVIDES

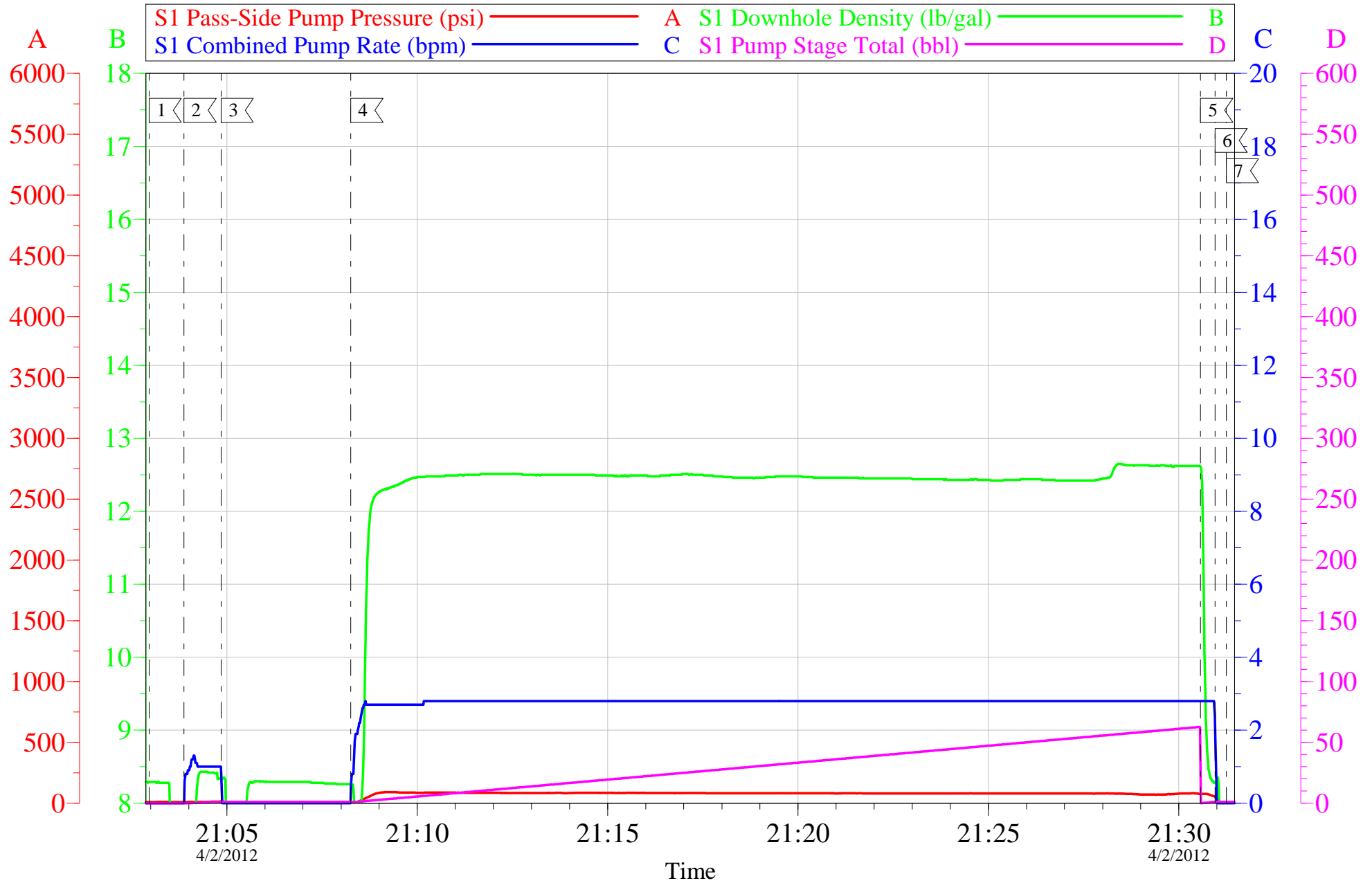
Job Date: 02-Apr-2012
Job Type: TOPOUT
Cement Supervisor: JEREMY YOUNG

Sales Order #: 9335415
ADC Used: YES
Elite #7: BRENDAN BURKE

OptiCem v6.4.10
02-Apr-12 21:39

OXY - CC 697-04-59A

TOPOUT #5

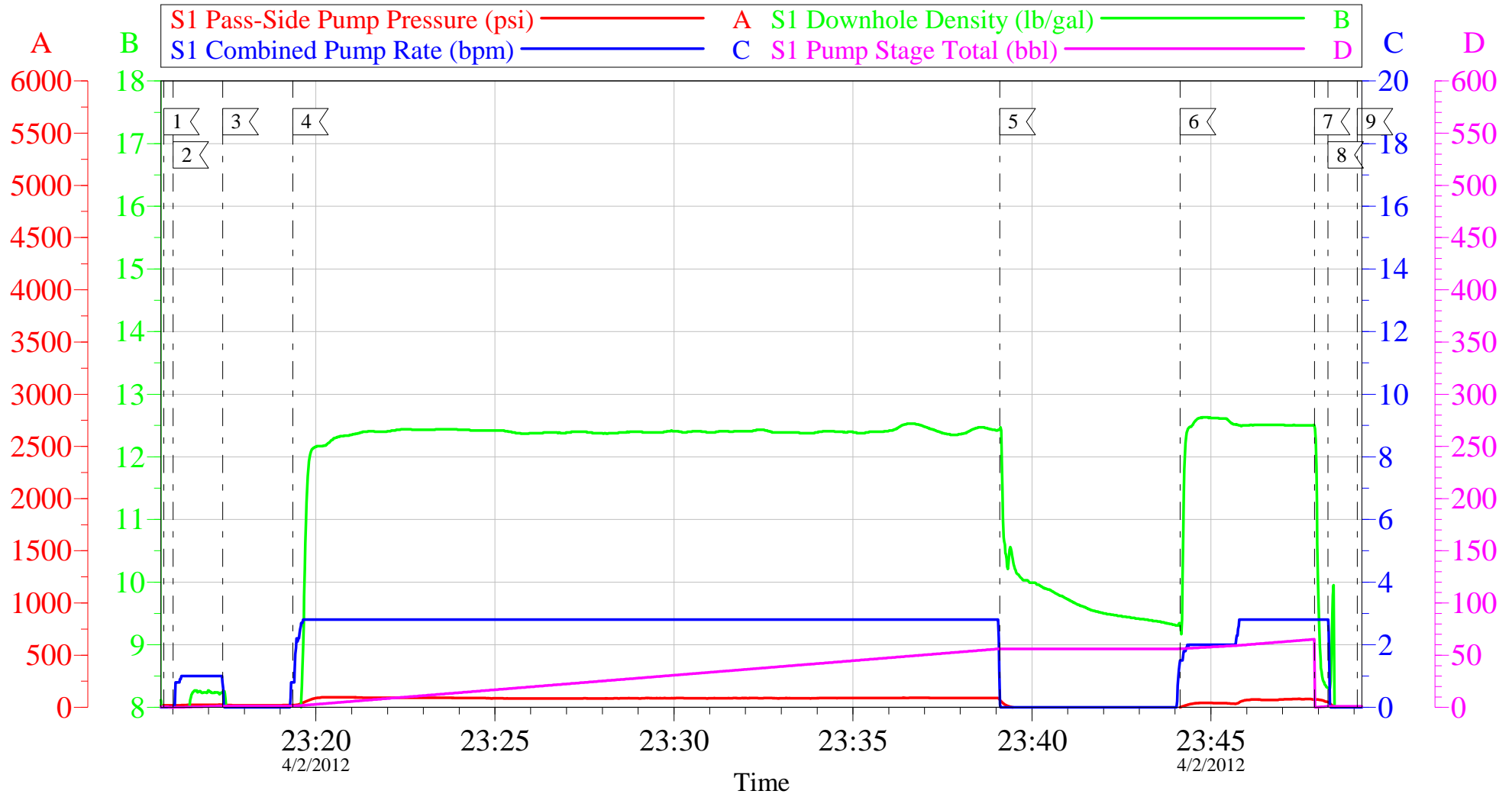


Customer: OXY	Job Date: 02-Apr-2012	Sales Order #: 9335415
Well Description: CC 697-04-59A	Job Type: TOPOUT	ADC Used: YES
Company Rep: VICTOR BENEVIDES	Cement Supervisor: JEREMY YOUNG	Elite #7: BRENDAN BURKE

OptiCem v6.4.10
02-Apr-12 21:40

OXY - CC 697-04-59A

TOPOUT #6



Local Event Log

1 START JOB	23:15:45	2 PUMP WATER AHEAD	23:16:01	3 SHUTDOWN	23:17:24
4 PUMP CEMENT	23:19:21	5 SHUTDOWN	23:39:06	6 RESUME PUMPING	23:44:09
7 PUMP WATER BEHIND	23:47:54	8 SHUTDOWN	23:48:16	9 END JOB	23:49:05

Customer: OXY
Well Description: CC 697-04-59A
Company Rep: VICTOR BENEVIDES

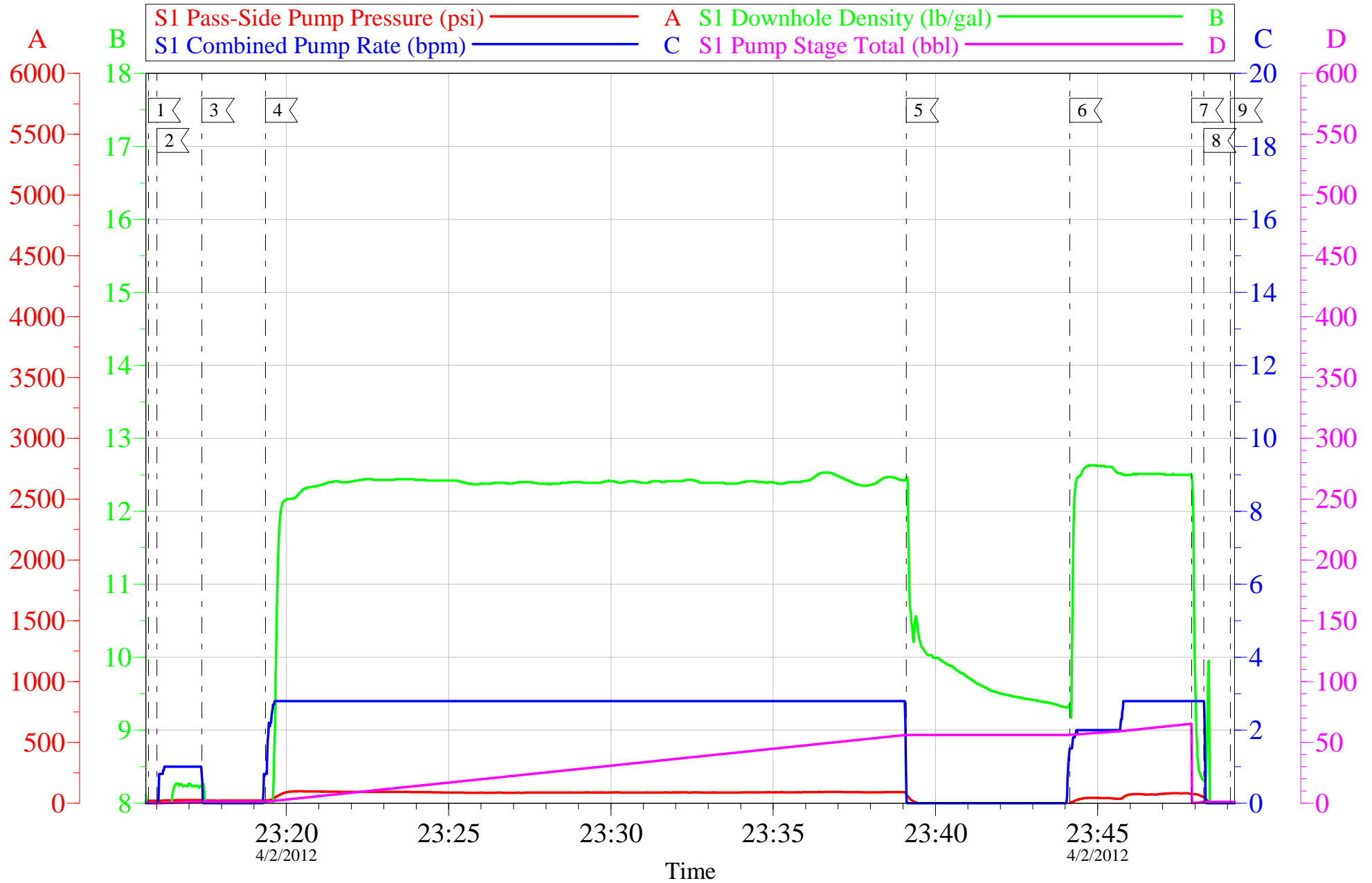
Job Date: 02-Apr-2012
Job Type: TOPOUT
Cement Supervisor: JEREMY YOUNG

Sales Order #: 9335415
ADC Used: YES
Elite #: BRENDAN BURKE

OptiCem v6.4.10
02-Apr-12 23:57

OXY - CC 697-04-59A

TOPOUT #6



Customer: OXY
Well Description: CC 697-04-59A
Company Rep: VICTOR BENEVIDES

Job Date: 02-Apr-2012
Job Type: TOPOUT
Cement Supervisor: JEREMY YOUNG

Sales Order #: 9335415
ADC Used: YES
Elite #7: BRENDAN BURKE

OptiCem v6.4.10
02-Apr-12 23:58

Sales Order #: 9335415	Line Item: 10	Survey Conducted Date: 4/3/2012
Customer: OXY GRAND JUNCTION EBUSINESS		Job Type (BOM): CMT SURFACE CASING BOM
Customer Representative:		API / UWI: (leave blank if unknown) 05-045-20709
Well Name: CC		Well Number: 697-04-59A
Well Type: Development Well	Well Country: United States of America	
H2S Present:	Well State: Colorado	Well County: Garfield

Dear Customer,

We hope that you were satisfied with the service quality of this job performed by Halliburton. It is the aim of our management and service personnel to deliver equipment and service of a standard unmatched in the service sector of the energy industry.

Please take the time to let us know if our performance met with your satisfaction. Please be as critical as possible to ensure we constantly improve our service. Your comments are of great value to us and are intended for the exclusive use of Halliburton.

CUSTOMER SATISFACTION SURVEY

CATEGORY	CUSTOMER SATISFACTION RESPONSE	
Survey Conducted Date	The date the survey was conducted	4/3/2012
Survey Interviewer	The survey interviewer is the person who initiated the survey.	JEREMY YOUNG (HX37077)
Customer Participation	Did the customer participate in this survey? (Y/N)	No
Customer Representative	Enter the Customer representative name	
HSE	Was our HSE performance satisfactory? Circle Y or N	
Equipment	Were you satisfied with our Equipment? Circle Y or N	
Personnel	Were you satisfied with our people? Circle Y or N	
Customer Comment	Customer's Comment	

CUSTOMER SIGNATURE

Sales Order #: 9335415	Line Item: 10	Survey Conducted Date: 4/3/2012
Customer: OXY GRAND JUNCTION EBUSINESS		Job Type (BOM): CMT SURFACE CASING BOM
Customer Representative:		API / UWI: (leave blank if unknown) 05-045-20709
Well Name: CC		Well Number: 697-04-59A
Well Type: Development Well	Well Country: United States of America	
H2S Present:	Well State: Colorado	Well County: Garfield

KEY PERFORMANCE INDICATORS

General	
Survey Conducted Date	4/3/2012
The date the survey was conducted	

Cementing KPI Survey	
Type of Job	0
Select the type of job. (Cementing or Non-Cementing)	
Select the Maximum Deviation range for this Job	Vertical
What is the highest deviation for the job you just completed? This may not be the maximum well deviation.	
Total Operating Time (hours)	12
Total Operating Hours Including Rig-up, Pumping, Rig-down. Enter in decimal format.	
HSE Incident, Accident, Injury	No
HSE Incident, Accident, Injury. This should be recordable incidents only.	
Was the job purpose achieved?	Yes
Was the job delivered correctly as per customer agreed design?	
Operating Hours (Pumping Hours)	8
Total number of hours pumping fluid on this job. Enter in decimal format.	
Customer Non-Productive Rig Time (hrs)	0
Lost time due to Halliburton in the start, execution, or completion of an ordered service or product, or delays in a follow-on service. Enter in decimal format. 0 if none.	
Type of Rig Classification Job Was Performed	Drilling Rig (Portable)
Type Of Rig (classification) Job Was Performed On	
Number Of JSAs Performed	12
Number Of Jsas Performed	
Number of Unplanned Shutdowns	0
Unplanned shutdown is when injection stops for any period of time.	
Was this a Primary Cement Job (Yes / No)	Yes

Sales Order #: 9335415	Line Item: 10	Survey Conducted Date: 4/3/2012
Customer: OXY GRAND JUNCTION EBUSINESS		Job Type (BOM): CMT SURFACE CASING BOM
Customer Representative:		API / UWI: (leave blank if unknown) 05-045-20709
Well Name: CC		Well Number: 697-04-59A
Well Type: Development Well	Well Country: United States of America	
H2S Present:	Well State: Colorado	Well County: Garfield

Primary Cement Job= Casing job, Liner job, or Tie-back job.	
Did We Run Wiper Plugs? Did We Run Top And Bottom Casing Wiper Plugs?	Top
Mixing Density of Job Stayed in Designed Density Range (0-100%) Density Range defined as +/- .20 ppg. Calculation: Total BBLs cement mixed at designed density divided by total BBLs of cement multiplied by 100	95
Was Automated Density Control Used? Was Automated Density Control (ADC) Used ?	Yes
Pump Rate (percent) of Job Stayed At Designed Pump Rate Pump Rate range defined as +/- 1bbl/min. Calculation: Total BBLs of fluid pumped at the designed rate divided by Total BBLs of fluid pumped, multiplied by 100	95
Nbr of Remedial Sqz Jobs Rqd - Competition Number Of Remedial Squeeze Jobs Required After Primary Job Performed By Competition	0
Nbr of Remedial Plug Jobs Rqd - HES Number Of Remedial Plug Jobs Needed After Primary Plug Pumped By HES	0
Nbr of Remedial Sqz Jobs Rqd - HES Number Of Remedial Squeeze Jobs Required After Primary Job Performed By HES	0