

ULTRA RESOURCES INC EBUSINESS
DO NOT MAIL-304 INVERNESS WAY S
ENGLEWOOD, Colorado

Brutus State
Brutus State 33-14 #1V

PATTERSON/189

Post Job Summary

Cement Surface Casing

Date Prepared: 04/04/12
Version: 1

Service Supervisor: SNYDER, JONATHAN

Submitted by: PLIENESS, RYAN

HALLIBURTON

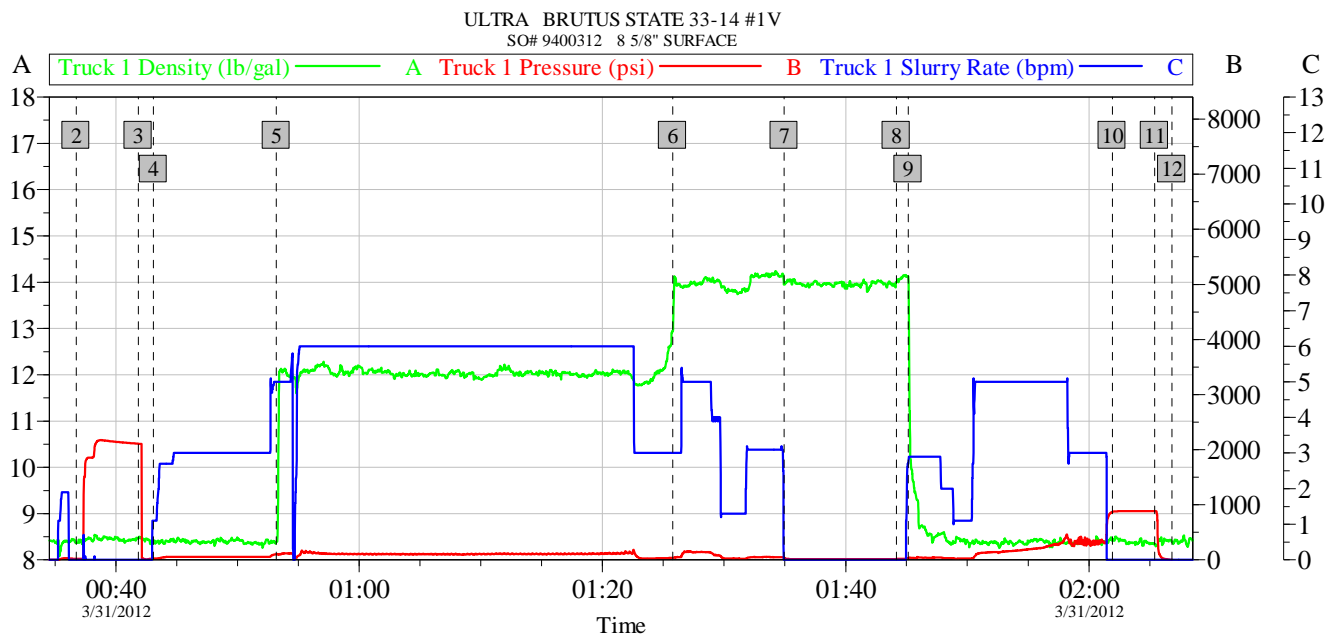
Wellbore Geometry

Job Tubulars					MD		TVD		Excess %	Shoe Joint Length ft
Type	Description	Size in	ID in	Wt lbm/ft	Top ft	Bottom ft	Top ft	Bottom ft		
Open Hole Section	Open Hole		12.250		0.00	930.00			150.00	
Casing	Surface Casing	8.63	8.097	24.00	0.00	930.00			0.00	

Pumping Schedule

Stage /Plug #	Fluid #	Fluid Type	Fluid Name	Surface Density lbm/gal	Avg Rate bbl/min	Surface Volume	Downhole Volume
1	1	Spacer	Fresh Water	8.34	3.00	30.0 bbl	30.0 bbl
1	2	Cement Slurry	Trinidad Surface Blend 12#	12.00	5.00	330.0 sacks	330.0 sacks
1	3	Cement Slurry	Trinidad Surface Blend 14#	14.00	5.00	70.0 sacks	70.0 sacks
1	4	Cement Slurry	Top Out Cement 15.8#	15.80	1.00		70.0 sacks

Data Acquisition



Global Event Log					
Intersection		TID	TIP	Intersection	
2 Start Job	00:36:44	8.369	18.00	3 Test Lines	00:41:50 8.460 2108
4 Pump Water Spacer	00:43:05	8.357	24.18	5 Pump Lead Cement @ 12#	00:53:11 8.393 102.7
6 Pump Tail Cement @ 14#	01:25:47	12.93	38.01	7 Shutdown	01:34:56 13.95 35.49
8 Drop Top Plug	01:44:11	14.00	17.00	9 Pump Displacement	01:45:08 14.13 34.00
10 Bump Plug	02:01:55	8.423	871.5	11 Check Floats	02:05:24 8.330 884.0
12 End Job	02:06:50	8.390	0.000		

Customer: ULTRA	Job Date: 30-Mar-2012	Sales Order #: 9400312
Well Description: BRUTUS STATE 33-14 #1V	UWI: 05-041-06064	
SERVICE SUPERVISOR JONATHAN SNYDER	SERVICE OPERATOR JAMES WILEY	

OptiCem v6.4.9
31-Mar-12 02:15

Service Supervisor Reports

Job Log

Date/Time	Chart #	Activity Code	Pump Rate	Cum Vol	Pump		Pressure (psig)	Comments
03/30/2012 00:00		Pre-Job Safety Meeting						HELD SAFETY MEETING WITH ALL EMPLOYEES AND ALL THIRD PARTY PERSONEL PRIOR TO PUMPING THE CEMENT JOB.
03/30/2012 00:36		Start Job						
03/30/2012 00:41		Test Lines						PRESSURE TEST LINES TO 2172 PSI
03/30/2012 00:43		Pump Spacer 1	3	30			56.0	RIG WATER MIXED WITH RED DYE
03/30/2012 00:53		Pump Lead Cement	6	151			112.0	330 SKS TRINIDAD SURFACE BLEND MIXED @ 12 PPG W/ RIG WATER
03/30/2012 01:25		Pump Tail Cement	6	21			138.0	70 SKS TRINIDAD SURFACE BLEND MIXED @ 14 PPG W/ RIG WATER
03/30/2012 01:34		Shutdown						
03/30/2012 01:44		Drop Top Plug						PLUG PRE-LOADED, DROPPED PRIOR TO PUMPING DISPLACEMENT
03/30/2012 01:45		Pump Displacement	6	57			212.0	RIG WATER SUPPLIED FROM THE RIG PITS
03/30/2012 02:01		Bump Plug	3				305.0	
03/30/2012 02:05		Check Floats					885.0	FLOATS HELD, GOOD RETURNS THROUGHOUT THE JOB.
03/30/2012 02:06		End Job						RIG CREW DAMMED IN ABOUT 20 BBLs OF CEMENT IN THE CELLAR TO PREVENT THE CEMENT FROM FALLING DOWN THE ANNULUS.
03/30/2012 02:10		Pre-Rig Down Safety Meeting						HELD SAFETY MEETING PRIOR TO RIGGING DOWN TO DISCUSS ALL POTENTIAL HAZARDS WHILE RIGGING DOWN EQUIPMENT WITH ALL EMPLOYEES.
03/30/2012 03:00		Depart Location for Service Center or Other Site						HELD SAFETY MEETING PRIOR TO LEAVING LOCATION TO DISCUSS ALL POTENTIAL HAZARDS WHILE DRIVING BACK TO THE SERVICE CENTER.
03/30/2012 19:30		Arrive at Location from Service Center						ARRIVED AND DID A HAZARD HUNT, FOUND NO VISIBLE HAZARDS THAT PREVENT US FROM RIGGING UP OUR EQUIPMENT.

HALLIBURTON

The Road to Excellence Starts with Safety

Sold To #: 355636		Ship To #: 2918571		Quote #:		Sales Order #: 9400312	
Customer: ULTRA RESOURCES INC EBUSINESS				Customer Rep: STARR, GARTH			
Well Name: Brutus State			Well #: 33-14 #1V			API/UWI #: 05-041-06064	
Field: WILD CAT		City (SAP): COLORADO SPRINGS		County/Parish: El Paso		State: Colorado	
Lat: N 38.83 deg. OR N 38 deg. 49 min. 48.202 secs.				Long: W 104.304 deg. OR W -105 deg. 41 min. 45.852 secs.			
Contractor: PATTERSON			Rig/Platform Name/Num: 189				
Job Purpose: Cement Surface Casing							
Well Type: Development Well			Job Type: Cement Surface Casing				
Sales Person: FLING, MATTHEW			Srvc Supervisor: SNYDER, JONATHAN			MBU ID Emp #: 435616	

Job Personnel

HES Emp Name	Exp Hrs	Emp #	HES Emp Name	Exp Hrs	Emp #	HES Emp Name	Exp Hrs	Emp #
BARTOSEK, KEVIN	7.5	516167	DIRKS, RICHARD E	7.5	485940	JEWELL, WILLIAM Uris	7.5	503358
SNYDER, JONATHAN Leroy	7.5	435616	WILEY, JAMES A	7.5	440080			

Equipment

HES Unit #	Distance-1 way	HES Unit #	Distance-1 way	HES Unit #	Distance-1 way	HES Unit #	Distance-1 way
10679720C	121 mile	11362287C	121 mile	11562570C	121 mile	11764054C	121 mile
11764737	121 mile						

Job Hours

Date	On Location Hours	Operating Hours	Date	On Location Hours	Operating Hours	Date	On Location Hours	Operating Hours

TOTAL Total is the sum of each column separately

Job

Job Times

Formation Name				Date	Time	Time Zone
Formation Depth (MD)	Top	Bottom		Called Out	30 - Mar - 2012	13:00 MST
Form Type	BHST			On Location	30 - Mar - 2012	19:30 MST
Job depth MD	930. ft	Job Depth TVD	940. ft	Job Started	31 - Mar - 2012	00:36 MST
Water Depth		Wk Ht Above Floor	10. ft	Job Completed	31 - Mar - 2012	02:06 MST
Perforation Depth (MD)	From	To		Departed Loc	31 - Mar - 2012	03:00 MST

Well Data

Description	New / Used	Max pressure psig	Size in	ID in	Weight lbm/ft	Thread	Grade	Top MD ft	Bottom MD ft	Top TVD ft	Bottom TVD ft
Open Hole				12.25				.	930.		
Surface Casing	Unknown		8.625	8.097	24.		J-55	.	930.		

Sales/Rental/3rd Party (HES)

Description	Qty	Qty uom	Depth	Supplier
CLR,FLT,TROPHY SEAL,8-5/8 8RD	1	EA		
PLUG,CMTG,TOP,WOODN,TWO CUP TY,8 5/8 IN	1	EA		
CENTRALIZER ASSY - API - 8-5/8 CSG X	8	EA		
CLAMP - LIMIT - 8-5/8 - HINGED -	1	EA		
Description	Qty	Qty uom	Depth	Supplier
KIT,HALL WELD-A	5	EA		

Tools and Accessories

HALLIBURTON

Type	Size	Qty	Make	Depth	Type	Size	Qty	Make	Depth	Type	Size	Qty	Make		
Guide Shoe					Packer					Top Plug					
Float Shoe					Bridge Plug					Bottom Plug					
Float Collar					Retainer					SSR plug set					
Insert Float										Plug Container					
Stage Tool										Centralizers					
Miscellaneous Materials															
Gelling Agt			Conc		Surfactant			Conc		Acid Type		Qty	Conc %		
Treatment Fld			Conc		Inhibitor			Conc		Sand Type		Size	Qty		
Fluid Data															
Stage/Plug #: 1															
Fluid #	Stage Type	Fluid Name				Qty	Qty uom	Mixing Density lbm/gal	Yield ft3/sk	Mix Fluid Gal/sk	Rate bbl/min	Total Mix Fluid Gal/sk			
1	Fresh Water					30.00	bbl	8.34	.0	.0	.0				
2	Trinidad Surface Blend 12#	SWIFTCEM (TM) SYSTEM (452990)				330.0	sacks	12.	2.56	14.67	5.0	14.67			
	14.67 Gal	FRESH WATER													
3	Trinidad Surface Blend 14#	SWIFTCEM (TM) SYSTEM (452990)				70.0	sacks	14.	1.66	7.9	5.0	7.9			
	7.9 Gal	FRESH WATER													
4	Top Out Cement 15.8#	CMT - PREMIUM - CLASS G, 94 LB SK (100003685)					sacks	15.8	1.16	5.01	1.0	5.01			
	94 lbm	CMT - PREMIUM - CLASS G REG OR TYPE V, BULK (100003685)													
	2 %	CALCIUM CHLORIDE, PELLET, 50 LB (101509387)													
	5.01 Gal	FRESH WATER													
Calculated Values				Pressures				Volumes							
Displacement				Shut In: Instant				Lost Returns		Cement Slurry		Pad			
Top Of Cement				5 Min				Cement Returns		Actual Displacement		Treatment			
Frac Gradient				15 Min				Spacers		Load and Breakdown		Total Job			
Rates															
Circulating				Mixing				Displacement			Avg. Job				
Cement Left In Pipe		Amount	0 ft	Reason		Shoe Joint									
Frac Ring # 1 @		ID		Frac ring # 2 @		ID		Frac Ring # 3 @		ID		Frac Ring # 4 @	ID		
The Information Stated Herein Is Correct							Customer Representative Signature								