

T26S, R70W, 6th P.M.

SWEPI LP

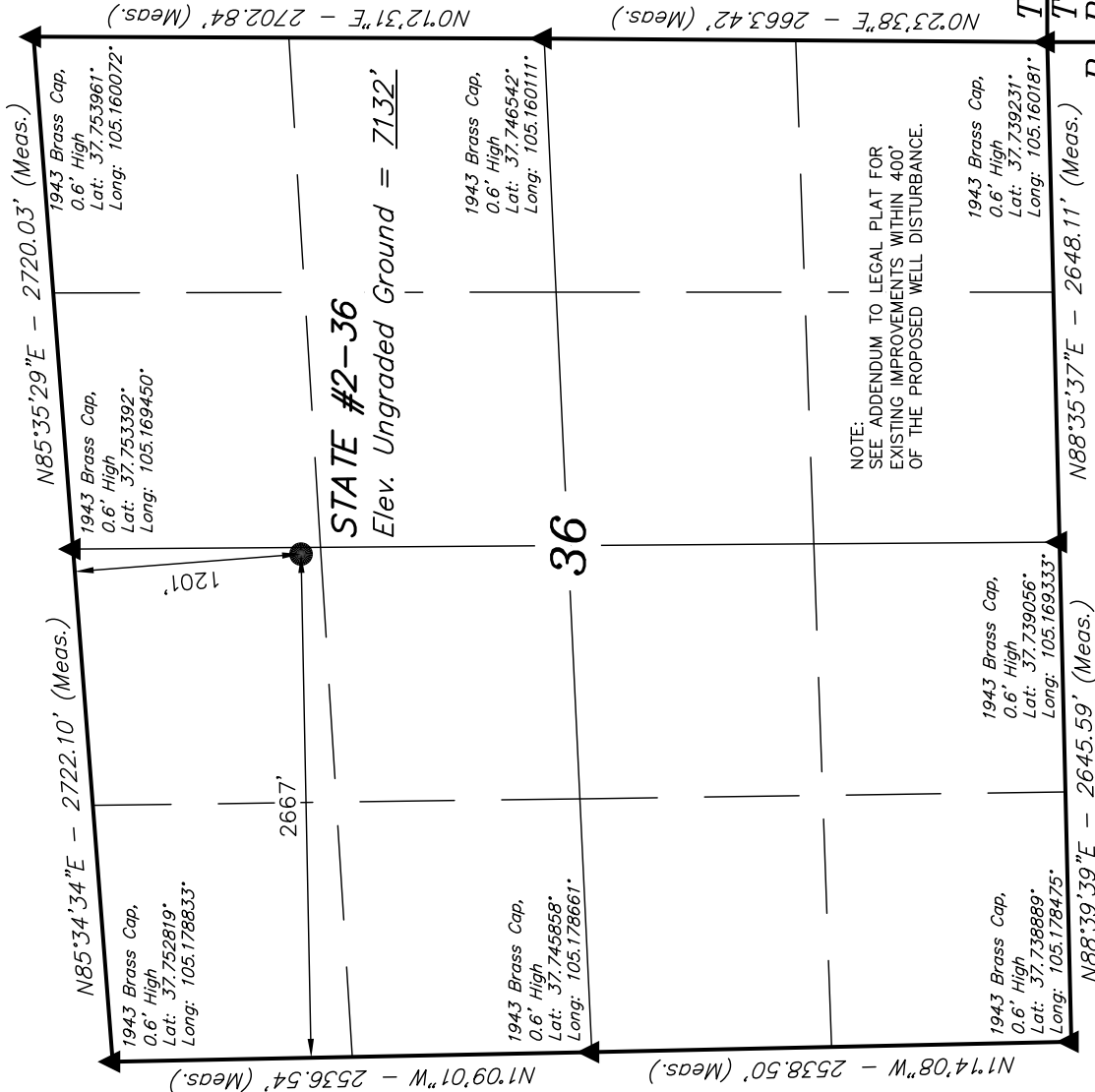
Well location, STATE #2-36, located as shown in the NE 1/4 NW 1/4 of Section 36, T26S, R70W, 6th P.M., Huerfano County, Colorado.

BASIS OF ELEVATION

SPOT ELEVATION IN THE NORTHEAST 1/4 OF SECTION 33, T26S, R70W, 6th P.M., TAKEN FROM THE LITTLE SHEEP MOUNTAIN QUADRANGLE, COLORADO, 7.5 MINUTE QUAD (TOPOGRAPHIC MAP) PUBLISHED BY THE UNITED STATES DEPARTMENT OF THE INTERIOR, GEOLOGICAL SURVEY. SAID ELEVATION IS MARKED AS BEING 7455 FEET.

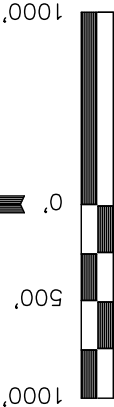
BASIS OF BEARINGS

BASIS OF BEARINGS IS A G.P.S. OBSERVATION.



LEGEND:

- = 90° SYMBOL
- = PROPOSED WELL HEAD.
- ▲ = SECTION CORNERS LOCATED.



CERTIFICATE

THIS IS TO CERTIFY THAT THE ABOVE PLAT WAS PREPARED FROM FIELD NOTES OF ACTUAL SURVEYS MADE BY ME OR UNDER MY SUPERVISION AND THAT THE SAME ARE TRUE AND CORRECT TO THE BEST OF MY KNOWLEDGE AND BELIEF.

REGISTERED LAND SURVEYOR  
REGISTRATION NO. 17492  
STATE OF COLORADO 04-19-12

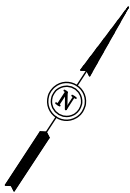
UNTAH ENGINEERING & LAND SURVEYING  
85 SOUTH 200 EAST - VERNAL, UTAH 84078  
(435) 789-1017

SCALE 1" = 1000' DATE SURVEYED: 01-13-12 DATE DRAWN: 04-12-12

PARTY J.H. C.M. J. I. REFERENCES G.L.O. PLAT

WEATHER COOL FILE

SWEPI LP



SWEPI LP  
ADDENDUM TO LEGAL PLAT FOR  
STATE #2-36  
SECTION 36, T26S, R70W, 6th P.M.  
1201' FNL 2667' FWL

SCALE: 1" = 200'  
DATE: 01-23-12  
DRAWN BY: J.I.  
REV.: 02-08-12

