

# T7N, R89W, 6th P.M.

AXIA ENERGY

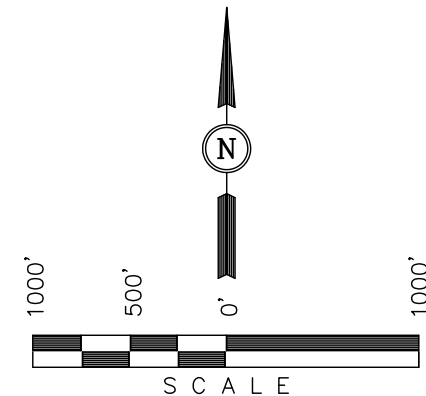
Well location, BULLDOG #5-14H-789 (SURFACE LOCATION), located as shown in the SW 1/4 SW 1/4 of Section 5, T7N, R89W, 6th P.M., Moffat County, Colorado.

## BASIS OF ELEVATION

SPOT ELEVATION LOCATED AT THE SOUTHWEST CORNER OF SECTION 15, T7N, R91W, 6th P.M. TAKEN FROM THE CRAIG QUADRANGLE, COLORADO, MOFFAT COUNTY, 7.5 MINUTE QUAD (TOPOGRAPHIC MAP) PUBLISHED BY THE UNITED STATES DEPARTMENT OF THE INTERIOR, GEOLOGICAL SURVEY. SAID ELEVATION IS MARKED AS BEING 6672 FEET.

## BASIS OF BEARINGS

BASIS OF BEARINGS IS A G.P.S. OBSERVATION.



## CERTIFICATE

THIS IS TO CERTIFY THAT THE ABOVE PLAT WAS PREPARED FROM FIELD NOTES OF ACTUAL SURVEYS MADE BY ME OR UNDER MY SUPERVISION AND THAT THE SAME ARE TRUE AND CORRECT TO THE BEST OF MY KNOWLEDGE AND BELIEF.

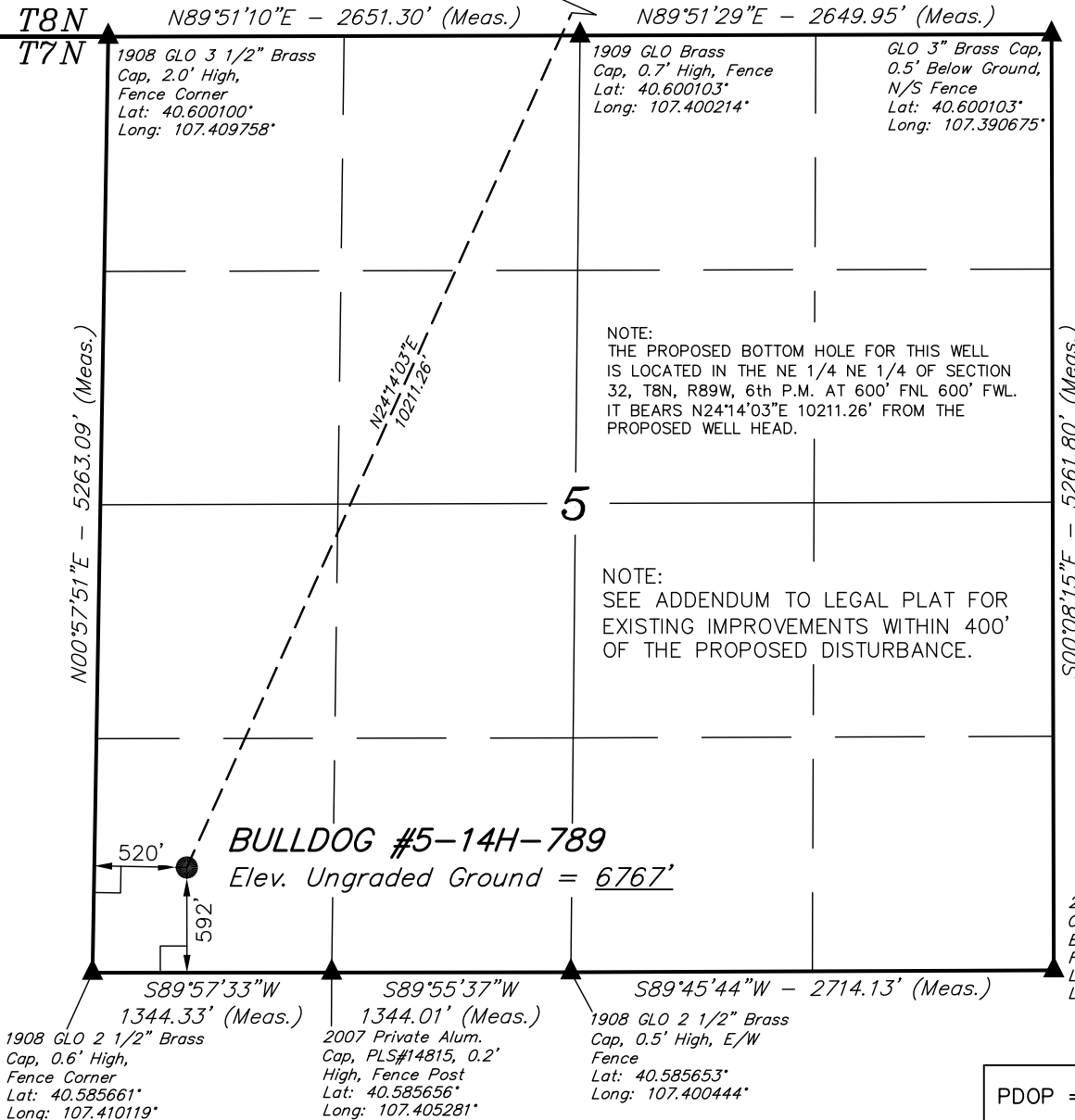
REGISTERED LAND SURVEYOR  
REGISTRATION NO. 17492  
STATE OF COLORADO

**UINTAH ENGINEERING & LAND SURVEYING**  
85 SOUTH 200 EAST - VERNAL, UTAH 84078  
(435) 789-1017

PDOP = 1.4

NAD 83 (SURFACE LOCATION)	
LATITUDE	= 40°35'14.21" (40.587281)
LONGITUDE	= 107°24'29.54" (107.408206)
NAD 27 (SURFACE LOCATION)	
LATITUDE	= 40°35'14.31" (40.587308)
LONGITUDE	= 107°24'27.32" (107.407589)
STATE PLANE NAD 83	
N: 1462489.84	E: 2470054.09
STATE PLANE NAD 27	
N: 462488.56	E: 1470211.66

SCALE 1" = 1000'	DATE SURVEYED: 03-06-12	DATE DRAWN: 04-03-12
PARTY G.O. S.W. J.I.	REFERENCES G.L.O. PLAT	
WEATHER COOL	FILE AXIA ENERGY	



## LEGEND:

- └─┘ = 90° SYMBOL
- = PROPOSED WELL HEAD.
- ▲ = SECTION CORNERS LOCATED.

T8N, R89W, 6th P.M.

1908 GLO 2 1/2" Brass  
Cap, 1.0' High, N/S  
Fence  
Lat: 40.614464°  
Long: 107.390958°

N89°23'59"E - 5319.96' (Meas.)

1908 GLO 2 1/2" Brass  
Cap, 0.8' High, E/W  
Fence  
Lat: 40.614344°  
Long: 107.410111°

Target Bottom Hole

600'  
600'

S02°09'46"E - 2625.53' (Meas.)

S00°10'56"W - 2610.07' (Meas.)

1908 GLO 2 1/2" Brass  
Cap, 0.5' High,  
Fence Post  
Lat: 40.607264°  
Long: 107.390622°

N24°14'03"E  
10211.26'

32

NOTE:  
THE PROPOSED BOTTOM HOLE BEARS N24°14'03"E  
10211.26' FROM THE PROPOSED WELL HEAD WHICH  
IS LOCATED IN THE SW 1/4 SW 1/4 OF SECTION 5,  
T7N, R89W, 6th P.M. AT 592' FSL 520' FWL.

N01°12'19"W - 5192.50' (Meas.)

1908 GLO 3 1/2" Brass  
Cap, 2.0' High,  
Fence Corner  
Lat: 40.213613°  
Long: 107.409758°

1909 GLO Brass  
Cap, 0.7' High, Fence  
Lat: 40.600103°  
Long: 107.400214°

GLO 3" Brass Cap,  
0.5' Below Ground,  
N/S Fence  
Lat: 40.600103°  
Long: 107.390675°

T8N  
T7N

N89°51'10"E - 2651.30' (Meas.)

N89°51'29"E - 2649.95' (Meas.)

BULLDOG #5-14H-789  
Surface Location

LEGEND:

- └─┘ = 90° SYMBOL
- = PROPOSED WELL HEAD.
- ▲ = SECTION CORNERS LOCATED.

NAD 83 (TARGET BOTTOM HOLE)	
LATITUDE =	40°36'46.10" (40.612806)
LONGITUDE =	107°23'34.95" (107.393042)
NAD 27 (TARGET BOTTOM HOLE)	
LATITUDE =	40°36'46.20" (40.612833)
LONGITUDE =	107°23'32.73" (107.392425)
STATE PLANE NAD 83	
N:	1471696.60 E: 2474463.26
STATE PLANE NAD 27	
N:	471695.25 E: 1474620.80

AXIA ENERGY

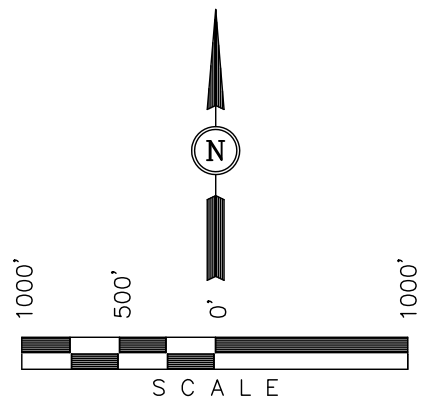
Well location, BULLDOG #5-14H-789 (TARGET  
BOTTOM HOLE), located as shown in the NE 1/4  
NE 1/4 of Section 32, T8N, R89W, 6th P.M.,  
Moffat County, Colorado.

BASIS OF ELEVATION

SPOT ELEVATION LOCATED AT THE SOUTHWEST CORNER OF  
SECTION 15, T7N, R91W, 6th P.M. TAKEN FROM THE CRAIG  
QUADRANGLE, COLORADO, MOFFAT COUNTY, 7.5 MINUTE QUAD  
(TOPOGRAPHIC MAP) PUBLISHED BY THE UNITED STATES  
DEPARTMENT OF THE INTERIOR, GEOLOGICAL SURVEY. SAID  
ELEVATION IS MARKED AS BEING 6672 FEET.

BASIS OF BEARINGS

BASIS OF BEARINGS IS A G.P.S. OBSERVATION.



CERTIFICATE

THIS IS TO CERTIFY THAT THE ABOVE PLAT WAS PREPARED FROM  
FIELD NOTES OF ACTUAL SURVEYS MADE BY ME OR UNDER MY  
SUPERVISION AND THAT THE SAME ARE TRUE AND CORRECT TO THE  
BEST OF MY KNOWLEDGE AND BELIEF.

REGISTERED LAND SURVEYOR  
REGISTRATION NO. 17492  
STATE OF COLORADO  
04-17-12

UINTAH ENGINEERING & LAND SURVEYING  
85 SOUTH 200 EAST - VERNAL, UTAH 84078  
(435) 789-1017

SCALE 1" = 1000'	DATE SURVEYED: 03-06-12	DATE DRAWN: 04-03-12
PARTY G.O. S.W. J.I.	REFERENCES G.L.O. PLAT	
WEATHER COOL	FILE AXIA ENERGY	