

KERR-MCGEE OIL & GAS ONSHORE LP

Location: COLORADO Slot: SLOT#02 PARADIZE 4-15HZ (472'FSL & 2112'FWL, SEC.15)
Field: WELD COUNTY (KERR MCGEE) Well: PARADIZE 4-15HZ
Facility: SEC.15-T2N-R67W Wellbore: PARADIZE 4-15HZ PWB

Plot reference wellpath is PARADIZE 4-15HZ (REV-B.0) PWP

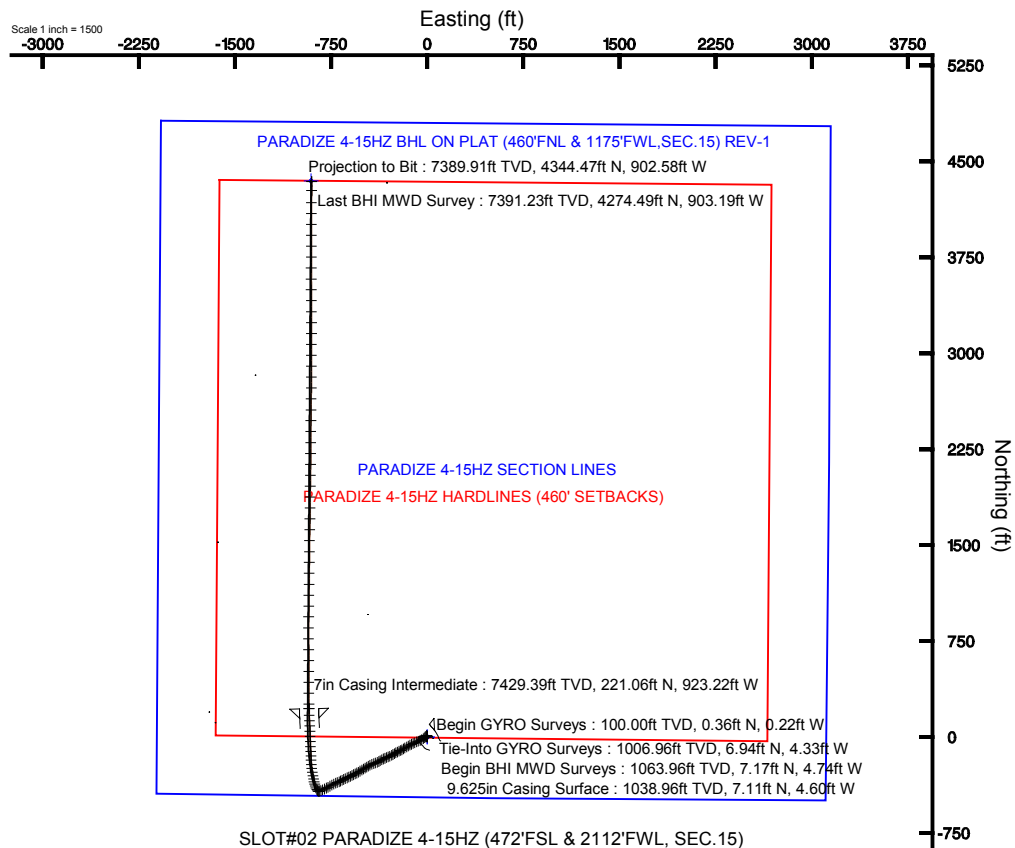
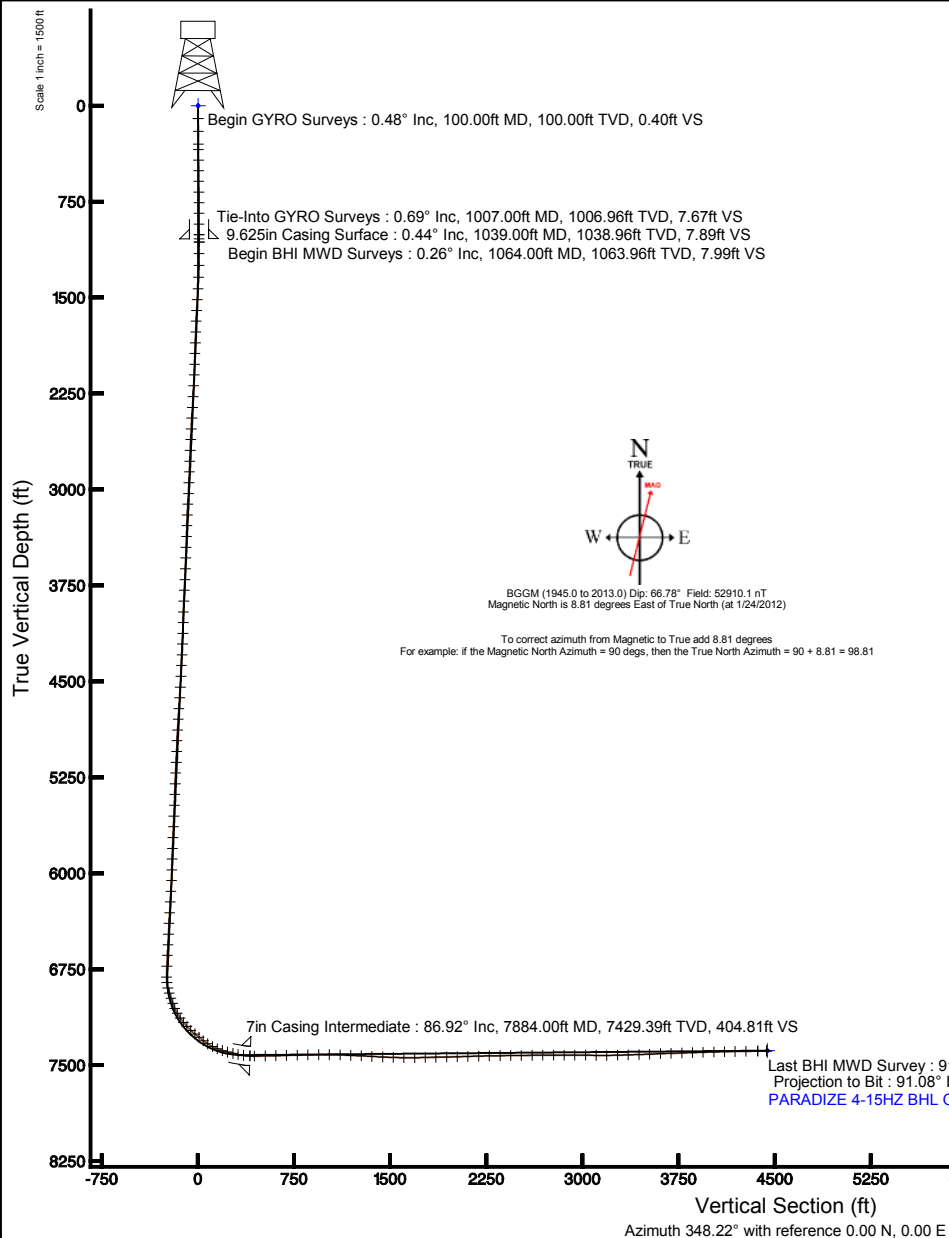
True vertical depths are referenced to Rig on SLOT#02 PARADIZE 4-15HZ (472'FSL & 2112'FWL, SEC.15) (RKB) Grid System: NAD83 / Lambert Colorado SP, Northern Zone (501), US feet

Measured depths are referenced to Rig on SLOT#02 PARADIZE 4-15HZ (472'FSL & 2112'FWL, SEC.15) (RKB) North Reference: True north

Rig on SLOT#02 PARADIZE 4-15HZ (472'FSL & 2112'FWL, SEC.15) (RKB) to Mean Sea Level: 5013 feet Scale: True distance

Mean Sea Level to Mud line (At Slot: SLOT#02 PARADIZE 4-15HZ (472'FSL & 2112'FWL, SEC.15)): 0 feet Depths are in feet

Coordinates are in feet referenced to Slot Created by: wjlgf02 on 2/28/2012



**Actual Wellpath Report**

PARADIZE 4-15HZ AWP

Page 1 of 6

**REFERENCE WELLPATH IDENTIFICATION**

Operator	KERR-MCGEE OIL & GAS ONSHORE LP	Slot	SLOT#02 PARADIZE 4-15HZ (472'FSL & 2112'FWL, SEC.15)
Area	COLORADO	Well	PARADIZE 4-15HZ
Field	WELD COUNTY (KERR MCGEE)	Wellbore	PARADIZE 4-15HZ AWP
Facility	SEC.15-T2N-R67W		

REPORT SETUP INFORMATION

Projection System	NAD83 / Lambert Colorado SP, Northern Zone (501), US feet	Software System	WellArchitect® 3.0.2
North Reference	True	User	Wilsjef02
Scale	0.999959	Report Generated	2/28/2012 at 07:59:22
Convergence at slot	0.40° East	Database/Source file	WellArchitectDB/PARADIZE_4-15HZ_AWP.xml

WELLPATH LOCATION

	Local coordinates		Grid coordinates		Geographic coordinates	
	North[ft]	East[ft]	Easting[US ft]	Northing[US ft]	Latitude	Longitude
Slot Location	6.88	2.56	3173772.49	1291632.77	40°07'56.114"N	104°52'42.650"W
Facility Reference Pt			3173769.98	1291625.87	40°07'56.046"N	104°52'42.683"W
Field Reference Pt			3197771.84	1268891.29	40°04'09.600"N	104°47'36.000"W

WELLPATH DATUM

Calculation method	Minimum curvature	Rig on SLOT#02 PARADIZE 4-15HZ (472'FSL & 2112'FWL, SEC.15) (RKB) to Facility Vertical Datum
Horizontal Reference Pt	Slot	Rig on SLOT#02 PARADIZE 4-15HZ (472'FSL & 2112'FWL, SEC.15) (RKB) to Mean Sea Level
Vertical Reference Pt	Rig on SLOT#02 PARADIZE 4-15HZ (472'FSL & 2112'FWL, SEC.15) (RKB)	Rig on SLOT#02 PARADIZE 4-15HZ (472'FSL & 2112'FWL, SEC.15) (RKB) to Mud Line at Slot (SLOT#02 PARADIZE 4-15)
MD Reference Pt	Rig on SLOT#02 PARADIZE 4-15HZ (472'FSL & 2112'FWL, SEC.15) (RKB)	Section Origin
Field Vertical Reference	Mean Sea Level	Section Azimuth

Actual Wellpath Report

PARADIZE 4-15HZ AWP

Page 2 of 6

REFERENCE WELLPATH IDENTIFICATION

Operator	KERR-MCGEE OIL & GAS ONSHORE LP	Slot	SLOT#02 PARADIZE 4-15HZ (472'FSL & 2112'FWL, SEC.15)
Area	COLORADO	Well	PARADIZE 4-15HZ
Field	WELD COUNTY (KERR MCGEE)	Wellbore	PARADIZE 4-15HZ AWP
Facility	SEC.15-T2N-R67W		

WELLPATH DATA (153 stations)

MD [ft]	Inclination [°]	Azimuth [°]	TVD [ft]	Vert Sect [ft]	North [ft]	East [ft]	Latitude	Longitude	DLS [°/100ft]	Comments
100.00	0.482	328.426	100.00	0.40	0.36	-0.22	40°07'56.118"N	104°52'42.653"W	0.00	Begin GYRO Surveys
200.00	0.662	321.556	199.99	1.31	1.17	-0.80	40°07'56.126"N	104°52'42.660"W	0.19	
300.00	0.504	295.775	299.99	2.09	1.81	-1.55	40°07'56.132"N	104°52'42.670"W	0.30	
340.60	0.694	320.154	340.59	2.42	2.08	-1.87	40°07'56.135"N	104°52'42.674"W	0.77	
423.90	0.610	0.854	423.88	3.30	2.91	-2.19	40°07'56.143"N	104°52'42.678"W	0.55	
507.20	0.377	357.609	507.18	4.00	3.63	-2.19	40°07'56.150"N	104°52'42.678"W	0.28	
590.50	0.731	347.577	590.48	4.80	4.42	-2.32	40°07'56.158"N	104°52'42.680"W	0.44	
673.80	0.738	328.829	673.77	5.84	5.40	-2.71	40°07'56.167"N	104°52'42.685"W	0.29	
757.10	0.526	314.978	757.06	6.67	6.13	-3.26	40°07'56.175"N	104°52'42.692"W	0.31	
840.40	0.146	337.708	840.36	7.09	6.50	-3.57	40°07'56.178"N	104°52'42.696"W	0.47	
923.70	0.218	280.971	923.66	7.25	6.63	-3.77	40°07'56.179"N	104°52'42.698"W	0.22	
1007.00	0.686	304.195	1006.96	7.67	6.94	-4.33	40°07'56.183"N	104°52'42.706"W	0.59	Tie-Into GYRO Surveys
1064.00	0.260	290.750	1063.96	7.99	7.17	-4.74	40°07'56.185"N	104°52'42.711"W	0.77	Begin BHI MWD Surveys
1156.00	1.550	245.680	1155.94	7.83	6.74	-6.07	40°07'56.181"N	104°52'42.728"W	1.50	
1248.00	3.240	229.970	1247.86	6.33	4.55	-9.19	40°07'56.159"N	104°52'42.768"W	1.95	
1340.00	5.010	232.020	1339.62	3.33	0.41	-14.35	40°07'56.118"N	104°52'42.835"W	1.93	
1432.00	7.280	230.280	1431.08	-1.18	-5.79	-22.00	40°07'56.057"N	104°52'42.933"W	2.48	
1518.00	8.920	233.430	1516.22	-6.53	-13.25	-31.55	40°07'55.983"N	104°52'43.056"W	1.97	
1603.00	9.520	239.580	1600.13	-11.54	-20.73	-42.90	40°07'55.909"N	104°52'43.202"W	1.36	
1688.00	9.840	246.480	1683.92	-15.27	-27.19	-55.62	40°07'55.845"N	104°52'43.366"W	1.41	
1774.00	10.160	246.030	1768.61	-18.37	-33.20	-69.29	40°07'55.786"N	104°52'43.542"W	0.38	
1859.00	10.510	245.310	1852.23	-21.68	-39.49	-83.19	40°07'55.724"N	104°52'43.721"W	0.44	
1945.00	9.870	246.910	1936.88	-24.88	-45.66	-97.09	40°07'55.663"N	104°52'43.900"W	0.81	
2030.00	10.040	245.980	2020.60	-27.88	-51.53	-110.56	40°07'55.605"N	104°52'44.073"W	0.28	
2115.00	9.430	243.760	2104.37	-31.19	-57.62	-123.58	40°07'55.545"N	104°52'44.241"W	0.84	
2201.00	9.320	240.280	2189.23	-35.10	-64.19	-135.94	40°07'55.480"N	104°52'44.400"W	0.67	
2286.00	9.850	240.290	2273.04	-39.46	-71.21	-148.24	40°07'55.410"N	104°52'44.558"W	0.62	
2372.00	10.500	240.240	2357.69	-44.14	-78.74	-161.43	40°07'55.336"N	104°52'44.728"W	0.76	
2457.00	9.640	235.940	2441.38	-49.23	-86.57	-174.05	40°07'55.258"N	104°52'44.891"W	1.34	
2542.00	8.900	239.090	2525.27	-54.09	-93.94	-185.58	40°07'55.186"N	104°52'45.039"W	1.06	
2627.00	8.760	242.600	2609.26	-57.99	-100.29	-196.97	40°07'55.123"N	104°52'45.186"W	0.65	
2713.00	8.800	243.490	2694.25	-61.42	-106.24	-208.67	40°07'55.064"N	104°52'45.337"W	0.16	
2798.00	8.920	243.630	2778.24	-64.74	-112.07	-220.40	40°07'55.006"N	104°52'45.487"W	0.14	
2883.00	9.200	243.120	2862.18	-68.17	-118.07	-232.36	40°07'54.947"N	104°52'45.642"W	0.34	
2968.00	9.160	241.550	2946.09	-71.88	-124.37	-244.37	40°07'54.885"N	104°52'45.796"W	0.30	
3054.00	8.860	239.470	3031.03	-75.97	-130.99	-256.09	40°07'54.820"N	104°52'45.947"W	0.51	
3139.00	8.930	238.610	3115.01	-80.29	-137.75	-267.36	40°07'54.753"N	104°52'46.092"W	0.18	
3224.00	8.990	242.650	3198.97	-84.29	-144.24	-278.89	40°07'54.689"N	104°52'46.241"W	0.74	
3309.00	10.140	244.900	3282.79	-87.80	-150.47	-291.57	40°07'54.627"N	104°52'46.404"W	1.42	
3395.00	9.350	245.590	3367.55	-91.07	-156.56	-304.79	40°07'54.567"N	104°52'46.574"W	0.93	
3480.00	8.980	246.490	3451.46	-93.93	-162.06	-317.16	40°07'54.512"N	104°52'46.733"W	0.47	
3565.00	8.950	247.400	3535.42	-96.52	-167.25	-329.34	40°07'54.461"N	104°52'46.890"W	0.17	
3651.00	9.510	245.150	3620.31	-99.38	-172.81	-341.97	40°07'54.406"N	104°52'47.053"W	0.77	
3736.00	9.600	240.720	3704.13	-103.11	-179.22	-354.52	40°07'54.343"N	104°52'47.214"W	0.87	
3821.00	9.400	240.580	3787.96	-107.34	-186.10	-366.75	40°07'54.275"N	104°52'47.372"W	0.24	
3906.00	9.160	242.720	3871.85	-111.25	-192.61	-378.81	40°07'54.211"N	104°52'47.527"W	0.49	
3992.00	9.360	246.890	3956.73	-114.46	-198.49	-391.32	40°07'54.152"N	104°52'47.688"W	0.81	
4077.00	9.770	250.380	4040.55	-116.80	-203.63	-404.48	40°07'54.102"N	104°52'47.857"W	0.84	
4162.00	10.020	249.790	4124.29	-118.87	-208.60	-418.21	40°07'54.053"N	104°52'48.034"W	0.32	
4248.00	10.910	245.580	4208.86	-121.75	-214.55	-432.64	40°07'53.994"N	104°52'48.220"W	1.36	
4333.00	10.600	243.510	4292.36	-125.50	-221.37	-446.96	40°07'53.926"N	104°52'48.404"W	0.58	
4418.00	9.790	241.250	4376.02	-129.59	-228.33	-460.29	40°07'53.858"N	104°52'48.576"W	1.06	
4504.00	9.990	239.960	4460.74	-134.06	-235.58	-473.16	40°07'53.786"N	104°52'48.742"W	0.35	
4589.00	9.560	238.650	4544.51	-138.74	-242.94	-485.57	40°07'53.713"N	104°52'48.901"W	0.57	
4674.00	10.290	237.470	4628.24	-143.80	-250.70	-498.00	40°07'53.637"N	104°52'49.061"W	0.89	
4760.00	10.380	236.430	4712.84	-149.39	-259.11	-510.93	40°07'53.553"N	104°52'49.228"W	0.24	
4845.00	10.890	236.140	4796.38	-155.26	-267.82	-523.98	40°07'53.467"N	104°52'49.396"W	0.60	
4930.00	10.240	239.840	4879.94	-160.66	-276.09	-537.18	40°07'53.386"N	104°52'49.566"W	1.10	
5016.00	9.020	245.300	4964.73	-164.58	-282.75	-549.92	40°07'53.320"N	104°52'49.730"W	1.77	
5101.00	8.840	241.790	5048.70	-167.91	-288.62	-561.73	40°07'53.262"N	104°52'49.882"W	0.67	

Actual Wellpath Report

PARADIZE 4-15HZ AWP

Page 3 of 6

REFERENCE WELLPATH IDENTIFICATION

Operator	KERR-MCGEE OIL & GAS ONSHORE LP	Slot	SLOT#02 PARADIZE 4-15HZ (472'FSL & 2112'FWL, SEC.15)
Area	COLORADO	Well	PARADIZE 4-15HZ
Field	WELD COUNTY (KERR MCGEE)	Wellbore	PARADIZE 4-15HZ AWP
Facility	SEC.15-T2N-R67W		

WELLPATH DATA (153 stations) † = interpolated/extrapolated station

MD [ft]	Inclination [°]	Azimuth [°]	TVD [ft]	Vert Sect [ft]	North [ft]	East [ft]	Latitude	Longitude	DLS [°/100ft]	Comments
5186.00	10.120	242.680	5132.54	-171.76	-295.14	-574.12	40°07'53.197"N	104°52'50.041"W	1.52	
5271.00	9.820	244.280	5216.25	-175.51	-301.71	-587.28	40°07'53.132"N	104°52'50.211"W	0.48	
5357.00	9.340	243.580	5301.05	-179.04	-308.00	-600.14	40°07'53.070"N	104°52'50.376"W	0.57	
5442.00	9.480	243.940	5384.91	-182.51	-314.14	-612.60	40°07'53.010"N	104°52'50.537"W	0.18	
5527.00	9.590	246.540	5468.74	-185.68	-320.03	-625.39	40°07'52.951"N	104°52'50.701"W	0.52	
5613.00	10.210	244.050	5553.46	-188.99	-326.22	-638.81	40°07'52.890"N	104°52'50.874"W	0.88	
5698.00	9.590	243.220	5637.19	-192.67	-332.71	-651.91	40°07'52.826"N	104°52'51.043"W	0.75	
5783.00	9.470	241.850	5721.02	-196.48	-339.20	-664.39	40°07'52.762"N	104°52'51.204"W	0.30	
5869.00	8.830	243.510	5805.92	-200.15	-345.48	-676.54	40°07'52.700"N	104°52'51.360"W	0.80	
5954.00	9.180	247.520	5889.87	-203.06	-350.98	-688.64	40°07'52.645"N	104°52'51.516"W	0.85	
6039.00	9.660	249.090	5973.73	-205.46	-356.12	-701.57	40°07'52.595"N	104°52'51.682"W	0.64	
6125.00	10.510	244.920	6058.40	-208.41	-362.02	-715.42	40°07'52.536"N	104°52'51.860"W	1.30	
6210.00	10.730	242.330	6141.94	-212.36	-368.98	-729.44	40°07'52.468"N	104°52'52.041"W	0.62	
6295.00	11.240	241.120	6225.39	-216.96	-376.66	-743.71	40°07'52.392"N	104°52'52.225"W	0.66	
6381.00	12.020	240.550	6309.62	-222.14	-385.11	-758.84	40°07'52.308"N	104°52'52.420"W	0.92	
6466.00	11.030	242.320	6392.91	-227.06	-393.24	-773.75	40°07'52.228"N	104°52'52.612"W	1.24	
6551.00	10.820	244.560	6476.37	-231.17	-400.44	-788.16	40°07'52.157"N	104°52'52.797"W	0.56	
6636.00	10.820	243.060	6559.85	-235.15	-407.48	-802.47	40°07'52.087"N	104°52'52.981"W	0.33	
6721.00	10.420	242.190	6643.40	-239.36	-414.68	-816.39	40°07'52.016"N	104°52'53.160"W	0.51	
6807.00	10.200	239.780	6728.01	-243.91	-422.14	-829.84	40°07'51.942"N	104°52'53.334"W	0.56	
6893.00	8.720	258.050	6812.86	-246.34	-427.33	-842.81	40°07'51.891"N	104°52'53.501"W	3.87	
6936.00	10.460	297.010	6855.30	-243.91	-426.23	-849.48	40°07'51.902"N	104°52'53.586"W	15.30	
6979.00	14.630	318.030	6897.28	-236.76	-420.41	-856.60	40°07'51.959"N	104°52'53.678"W	14.23	
7021.00	18.190	333.720	6937.59	-225.82	-410.58	-863.05	40°07'52.056"N	104°52'53.761"W	13.47	
7064.00	18.150	336.060	6978.44	-212.77	-398.45	-868.74	40°07'52.176"N	104°52'53.834"W	1.70	
7107.00	20.750	341.960	7018.99	-198.65	-385.08	-873.82	40°07'52.308"N	104°52'53.900"W	7.57	
7149.00	25.110	343.740	7057.66	-182.36	-369.44	-878.62	40°07'52.463"N	104°52'53.962"W	10.51	
7192.00	29.350	347.740	7095.89	-162.72	-350.37	-883.41	40°07'52.651"N	104°52'54.023"W	10.73	
7235.00	33.460	347.940	7132.58	-140.32	-328.47	-888.13	40°07'52.868"N	104°52'54.084"W	9.56	
7278.00	38.370	350.760	7167.40	-115.12	-303.69	-892.75	40°07'53.113"N	104°52'54.144"W	12.05	
7320.00	42.940	350.880	7199.26	-87.79	-276.69	-897.12	40°07'53.380"N	104°52'54.200"W	10.88	
7363.00	47.040	352.660	7229.66	-57.46	-246.61	-901.45	40°07'53.677"N	104°52'54.256"W	9.97	
7405.00	50.720	355.710	7257.28	-26.00	-215.14	-904.63	40°07'53.988"N	104°52'54.297"W	10.33	
7448.00	52.020	357.460	7284.13	7.23	-181.61	-906.63	40°07'54.319"N	104°52'54.322"W	4.39	
7491.00	52.330	357.480	7310.50	40.75	-147.68	-908.13	40°07'54.654"N	104°52'54.342"W	0.72	
7533.00	57.550	357.550	7334.61	74.67	-113.34	-909.62	40°07'54.994"N	104°52'54.361"W	12.43	
7576.00	63.940	357.080	7355.62	111.70	-75.89	-911.38	40°07'55.364"N	104°52'54.383"W	14.89	
7619.00	68.390	358.080	7372.99	150.49	-36.60	-913.03	40°07'55.752"N	104°52'54.405"W	10.57	
7661.00	71.060	358.120	7387.54	189.30	2.77	-914.34	40°07'56.141"N	104°52'54.422"W	6.36	
7704.00	76.080	357.420	7399.70	229.96	43.97	-915.95	40°07'56.548"N	104°52'54.442"W	11.78	
7747.00	77.170	357.120	7409.65	271.28	85.76	-917.94	40°07'56.961"N	104°52'54.468"W	2.62	
7789.00	79.960	357.390	7417.97	311.93	126.87	-919.91	40°07'57.368"N	104°52'54.493"W	6.67	
7832.00	82.420	357.770	7424.56	353.85	169.32	-921.70	40°07'57.787"N	104°52'54.517"W	5.79	
7884.00†	86.916	358.873	7429.39	404.81	221.06	-923.22	40°07'58.298"N	104°52'54.536"W	8.90	7" Casing Point
7920.00	90.030	359.630	7430.35	440.13	257.04	-923.69	40°07'58.654"N	104°52'54.542"W	8.90	
8005.00	91.100	359.900	7429.51	523.41	342.04	-924.04	40°07'59.494"N	104°52'54.547"W	1.30	
8090.00	91.570	359.880	7427.53	606.63	427.01	-924.20	40°08'00.334"N	104°52'54.549"W	0.55	
8175.00	91.750	359.520	7425.07	689.89	511.97	-924.64	40°08'01.173"N	104°52'54.555"W	0.47	
8260.00	91.070	359.650	7422.98	773.20	596.95	-925.26	40°08'02.013"N	104°52'54.563"W	0.81	
8346.00	91.410	359.530	7421.12	857.50	682.92	-925.87	40°08'02.863"N	104°52'54.571"W	0.42	
8431.00	90.460	359.730	7419.73	940.81	767.91	-926.42	40°08'03.702"N	104°52'54.578"W	1.14	
8516.00	89.350	0.000	7419.87	1024.06	852.91	-926.62	40°08'04.542"N	104°52'54.580"W	1.34	
8602.00	88.370	0.920	7421.58	1108.09	938.89	-925.93	40°08'05.392"N	104°52'54.571"W	1.56	
8687.00	87.320	0.480	7424.78	1191.02	1023.82	-924.90	40°08'06.231"N	104°52'54.558"W	1.34	
8772.00	87.230	0.650	7428.82	1273.96	1108.72	-924.06	40°08'07.070"N	104°52'54.547"W	0.23	
8857.00	87.170	0.630	7432.97	1356.87	1193.61	-923.11	40°08'07.909"N	104°52'54.535"W	0.07	
8943.00	87.040	0.730	7437.31	1440.74	1279.50	-922.09	40°08'08.758"N	104°52'54.522"W	0.19	
9028.00	87.780	0.920	7441.15	1523.61	1364.40	-920.87	40°08'09.597"N	104°52'54.506"W	0.90	
9113.00	89.230	0.510	7443.37	1606.57	1449.36	-919.81	40°08'10.437"N	104°52'54.493"W	1.77	
9199.00	90.890	0.780	7443.28	1690.55	1535.35	-918.84	40°08'11.286"N	104°52'54.480"W	1.96	



Actual Wellpath Report

PARADIZE 4-15HZ AWP

Page 4 of 6



REFERENCE WELLPATH IDENTIFICATION

Operator	KERR-MCGEE OIL & GAS ONSHORE LP	Slot	SLOT#02 PARADIZE 4-15HZ (472'FSL & 2112'FWL, SEC.15)
Area	COLORADO	Well	PARADIZE 4-15HZ
Field	WELD COUNTY (KERR MCGEE)	Wellbore	PARADIZE 4-15HZ AWP
Facility	SEC.15-T2N-R67W		

WELLPATH DATA (153 stations)

MD [ft]	Inclination [°]	Azimuth [°]	TVD [ft]	Vert Sect [ft]	North [ft]	East [ft]	Latitude	Longitude	DLS [°/100ft]	Comments
9284.00	91.170	1.220	7441.75	1773.43	1620.33	-917.36	40°08'12.126"N	104°52'54.461"W	0.61	
9369.00	91.730	0.780	7439.60	1856.30	1705.28	-915.87	40°08'12.966"N	104°52'54.442"W	0.84	
9455.00	91.080	0.350	7437.49	1940.29	1791.25	-915.03	40°08'13.815"N	104°52'54.431"W	0.91	
9540.00	91.420	0.600	7435.64	2023.33	1876.23	-914.32	40°08'14.655"N	104°52'54.422"W	0.50	
9625.00	91.940	0.760	7433.15	2106.30	1961.19	-913.31	40°08'15.494"N	104°52'54.409"W	0.64	
9710.00	91.320	1.150	7430.73	2189.17	2046.14	-911.90	40°08'16.334"N	104°52'54.391"W	0.86	
9796.00	90.990	0.100	7429.00	2273.15	2132.12	-910.96	40°08'17.184"N	104°52'54.379"W	1.28	
9881.00	91.290	0.170	7427.31	2356.30	2217.10	-910.76	40°08'18.023"N	104°52'54.377"W	0.36	
9966.00	90.300	0.630	7426.13	2439.38	2302.09	-910.16	40°08'18.863"N	104°52'54.369"W	1.28	
10052.00	90.520	0.560	7425.51	2523.38	2388.08	-909.27	40°08'19.713"N	104°52'54.358"W	0.27	
10137.00	90.650	0.680	7424.64	2606.40	2473.07	-908.35	40°08'20.553"N	104°52'54.346"W	0.21	
10222.00	90.870	0.740	7423.52	2689.38	2558.06	-907.30	40°08'21.393"N	104°52'54.332"W	0.27	
10308.00	89.450	0.410	7423.28	2773.39	2644.05	-906.44	40°08'22.243"N	104°52'54.321"W	1.70	
10393.00	89.720	0.670	7423.89	2856.43	2729.04	-905.63	40°08'23.083"N	104°52'54.311"W	0.44	
10478.00	89.880	0.460	7424.19	2939.46	2814.04	-904.80	40°08'23.922"N	104°52'54.300"W	0.31	
10564.00	89.910	0.330	7424.35	3023.53	2900.04	-904.20	40°08'24.772"N	104°52'54.293"W	0.16	
10649.00	89.350	359.900	7424.89	3106.71	2985.04	-904.03	40°08'25.612"N	104°52'54.290"W	0.83	
10734.00	90.220	0.160	7425.21	3189.91	3070.03	-903.99	40°08'26.452"N	104°52'54.290"W	1.07	
10820.00	91.780	0.200	7423.71	3274.03	3156.02	-903.72	40°08'27.302"N	104°52'54.286"W	1.81	
10905.00	91.780	359.840	7421.07	3357.19	3240.98	-903.69	40°08'28.141"N	104°52'54.286"W	0.42	
10990.00	91.960	359.530	7418.30	3440.45	3325.93	-904.16	40°08'28.981"N	104°52'54.292"W	0.42	
11076.00	92.130	359.350	7415.23	3524.76	3411.87	-905.00	40°08'29.830"N	104°52'54.303"W	0.29	
11161.00	92.530	359.610	7411.77	3608.05	3496.80	-905.77	40°08'30.669"N	104°52'54.313"W	0.56	
11246.00	91.480	0.040	7408.80	3691.26	3581.74	-906.03	40°08'31.509"N	104°52'54.316"W	1.33	
11332.00	91.850	0.300	7406.30	3775.37	3667.71	-905.77	40°08'32.358"N	104°52'54.313"W	0.53	
11417.00	92.070	0.750	7403.39	3858.37	3752.65	-904.99	40°08'33.198"N	104°52'54.303"W	0.59	
11502.00	91.940	359.260	7400.42	3941.52	3837.60	-904.99	40°08'34.037"N	104°52'54.303"W	1.76	
11587.00	91.110	0.420	7398.16	4024.75	3922.57	-905.22	40°08'34.877"N	104°52'54.306"W	1.68	
11673.00	91.450	0.430	7396.24	4108.79	4008.54	-904.58	40°08'35.727"N	104°52'54.298"W	0.40	
11758.00	90.860	0.040	7394.52	4191.91	4093.52	-904.24	40°08'36.566"N	104°52'54.294"W	0.83	
11843.00	91.110	0.380	7393.06	4275.04	4178.51	-903.92	40°08'37.406"N	104°52'54.290"W	0.50	
11939.00	91.080	0.500	7391.23	4368.85	4274.49	-903.19	40°08'38.355"N	104°52'54.280"W	0.13	Last BHI MWD Survey
12009.00	91.080	0.500	7389.91	4437.24	4344.47	-902.58	40°08'39.046"N	104°52'54.272"W	0.00	Projection to Bit

HOLE & CASING SECTIONS - Ref Wellbore: PARADIZE 4-15HZ AWP Ref Wellpath: PARADIZE 4-15HZ AWP

String/Diameter	Start MD [ft]	End MD [ft]	Interval [ft]	Start TVD [ft]	End TVD [ft]	Start N/S [ft]	Start E/W [ft]	End N/S [ft]	End E/W [ft]
13.5in Open Hole	16.00	1039.00	1023.00	16.00	1038.96	0.36	-0.22	7.11	-4.60
9.625in Casing Surface	16.00	1039.00	1023.00	16.00	1038.96	0.36	-0.22	7.11	-4.60
8.75in Open Hole	1039.00	7894.00	6855.00	1038.96	7429.85	7.11	-4.60	231.05	-923.39
7in Casing Intermediate	16.00	7884.00	7868.00	16.00	7429.39	0.36	-0.22	221.06	-923.22
6.125in Open Hole	7884.00	12009.00	4125.00	7429.39	7389.91	221.06	-923.22	4344.47	-902.58



Actual Wellpath Report

PARADIZE 4-15HZ AWP

Page 5 of 6



REFERENCE WELLPATH IDENTIFICATION

Operator	KERR-MCGEE OIL & GAS ONSHORE LP	Slot	SLOT#02 PARADIZE 4-15HZ (472'FSL & 2112'FWL, SEC.15)
Area	COLORADO	Well	PARADIZE 4-15HZ
Field	WELD COUNTY (KERR MCGEE)	Wellbore	PARADIZE 4-15HZ AWP
Facility	SEC.15-T2N-R67W		

TARGETS

Name	MD [ft]	TVD [ft]	North [ft]	East [ft]	Grid East [US ft]	Grid North [US ft]	Latitude	Longitude	Shape
PARADIZE 4-15HZ SECTION LINES		-1.00	0.04	-0.03	3173772.46	1291632.81	40°07'56.114"N	104°52'42.650"W	polygon
PARADIZE 4-15HZ BHL ON PLAT (460'FNL & 1175'FWL, SEC.15) REV-1		7388.00	4349.40	-906.67	3172835.40	1295975.52	40°08'39.095"N	104°52'54.325"W	point
PARADIZE 4-15HZ HARDLINES (460' SETBACKS)		7388.00	0.04	-0.03	3173772.46	1291632.81	40°07'56.114"N	104°52'42.650"W	polygon

WELLPATH COMPOSITION - Ref Wellbore: PARADIZE 4-15HZ AWP Ref Wellpath: PARADIZE 4-15HZ AWP

Start MD [ft]	End MD [ft]	Positional Uncertainty Model	Log Name/Comment	Wellbore
100.00	1007.00	Gyrodata standard - Drop gyro or Multi-shot	GYRODATA SURVEYS <100-1007>	PARADIZE 4-15HZ AWP
1007.00	7832.00	NaviTrak (Standard)	BHI MWD SURVEYS 8 3/4" HOLE <1064-7832>	PARADIZE 4-15HZ AWP
7832.00	11939.00	NaviTrak (Standard)	BHI MWD SURVEYS 6 1/8" HOLE <7920-11939>	PARADIZE 4-15HZ AWP
11939.00	12009.00	Blind Drilling (std)	Projection to bit	PARADIZE 4-15HZ AWP



Actual Wellpath Report
PARADIZE 4-15HZ AWP
Page 6 of 6



REFERENCE WELLPATH IDENTIFICATION			
Operator	KERR-MCGEE OIL & GAS ONSHORE LP	Slot	SLOT#02 PARADIZE 4-15HZ (472'FSL & 2112'FWL, SEC.15)
Area	COLORADO	Well	PARADIZE 4-15HZ
Field	WELD COUNTY (KERR MCGEE)	Wellbore	PARADIZE 4-15HZ AWP
Facility	SEC.15-T2N-R67W		

WELLPATH COMMENTS				
MD [ft]	Inclination [°]	Azimuth [°]	TVD [ft]	Comment
100.00	0.482	328.426	100.00	Begin GYRO Surveys
1007.00	0.686	304.195	1006.96	Tie-Into GYRO Surveys
1064.00	0.260	290.750	1063.96	Begin BHI MWD Surveys
7884.00	86.916	358.873	7429.39	7" Casing Point
11939.00	91.080	0.500	7391.23	Last BHI MWD Survey
12009.00	91.080	0.500	7389.91	Projection to Bit