

T27S, R69W, 6th P.M.

SWEPI LP

Well location, FREEMAN #3-24, (SURFACE LOCATION) located as shown in the NW 1/4 SW 1/4 of Section 24, T27S, R69W, 6th P.M., Huerfano County, Colorado.

BASIS OF ELEVATION

SPOT ELEVATION IN THE NORTHEAST 1/4 OF SECTION 33, T26S, R70W, 6th P.M., TAKEN FROM THE LITTLE SHEEP MOUNTAIN QUADRANGLE, COLORADO, 7.5 MINUTE QUAD (TOPOGRAPHIC MAP) PUBLISHED BY THE UNITED STATES DEPARTMENT OF THE INTERIOR, GEOLOGICAL SURVEY. SAID ELEVATION IS MARKED AS BEING 7455 FEET.

BASIS OF BEARINGS

BASIS OF BEARINGS IS A G.P.S. OBSERVATION.

NORTH - 5280.00' (G.L.O)

NOTE:
SEE ADDENDUM TO LEGAL PLAT FOR
EXISTING IMPROVEMENTS WITHIN 400'
OF THE PROPOSED WELL DISTURBANCE.

NO°50'55"E - 5337.01' (Meas.)

24

FREEMAN #3-24

Elev. Ungraded Ground = 7070'

536'

2105'

N87°51'02"E - 5297.78' (Meas.)

1996 Private Alum.
Cap, 0.2' High
Lat: 37.678992°
Long: 105.069603°

Private Alum. Cap.
Flush W/Ground
Lat: 37.679511°
Long: 105.051317°

NOTE:
THE PROPOSED BOTTOM HOLE FOR THIS WELL
IS LOCATED IN THE NW 1/4 SW 1/4 OF SECTION
13, T27S, R69W, 6th P.M. AT A DISTANCE OF 1760'
FSL 230' FWL IT BEARS N02°37'06"W 4971.23' FROM
THE PROPOSED WELL HEAD.

LEGEND:

— = 90° SYMBOL

● = PROPOSED WELL HEAD.

▲ = SECTION CORNERS LOCATED.

PDOP = 2.0

NAD 83 (SURFACE LOCATION)

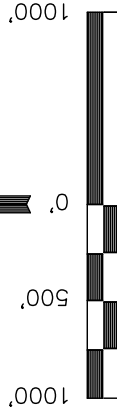
LATITUDE = 37°41'05.39" (37.684831)

LONGITUDE = 105°04'03.47" (105.067631)

NAD 27 (SURFACE LOCATION)

LATITUDE = 37°41'05.36" (37.684822)

LONGITUDE = 105°04'01.48" (105.067078)



S C A L E

CERTIFICATE

THIS IS TO CERTIFY THAT THE ABOVE PLAT WAS PREPARED FROM
FIELD NOTES OF ACTUAL SURVEYS MADE BY ME OR UNDER MY
SUPERVISION AND THAT THE SAME ARE TRUE AND CORRECT TO THE
BEST OF MY KNOWLEDGE AND BELIEF.

REGISTERED LAND SURVEYOR
REGISTRATION NO. 17492
STATE OF COLORADO
02-08-12

REV.: 02-08-12

UNTAH ENGINEERING & LAND SURVEYING

85 SOUTH 200 EAST - VERNAL, UTAH 84078

(435) 789-1017

SCALE 1" = 1000'	DATE SURVEYED: 01-17-12	DATE DRAWN: 01-23-12
PARTY J.H. C.M. J.I.	REFERENCES G.L.O. PLAT	
WEATHER COOL	FILE	SWEPI LP

T27S, R69W, 6th P.M.

SWEPI LP

Well location, FREEMAN #3-24, (TARGET BOTTOM HOLE) located as shown in the NW 1/4 SW 1/4 of Section 13, T27S, R69W, 6th P.M., Huerfano County, Colorado.

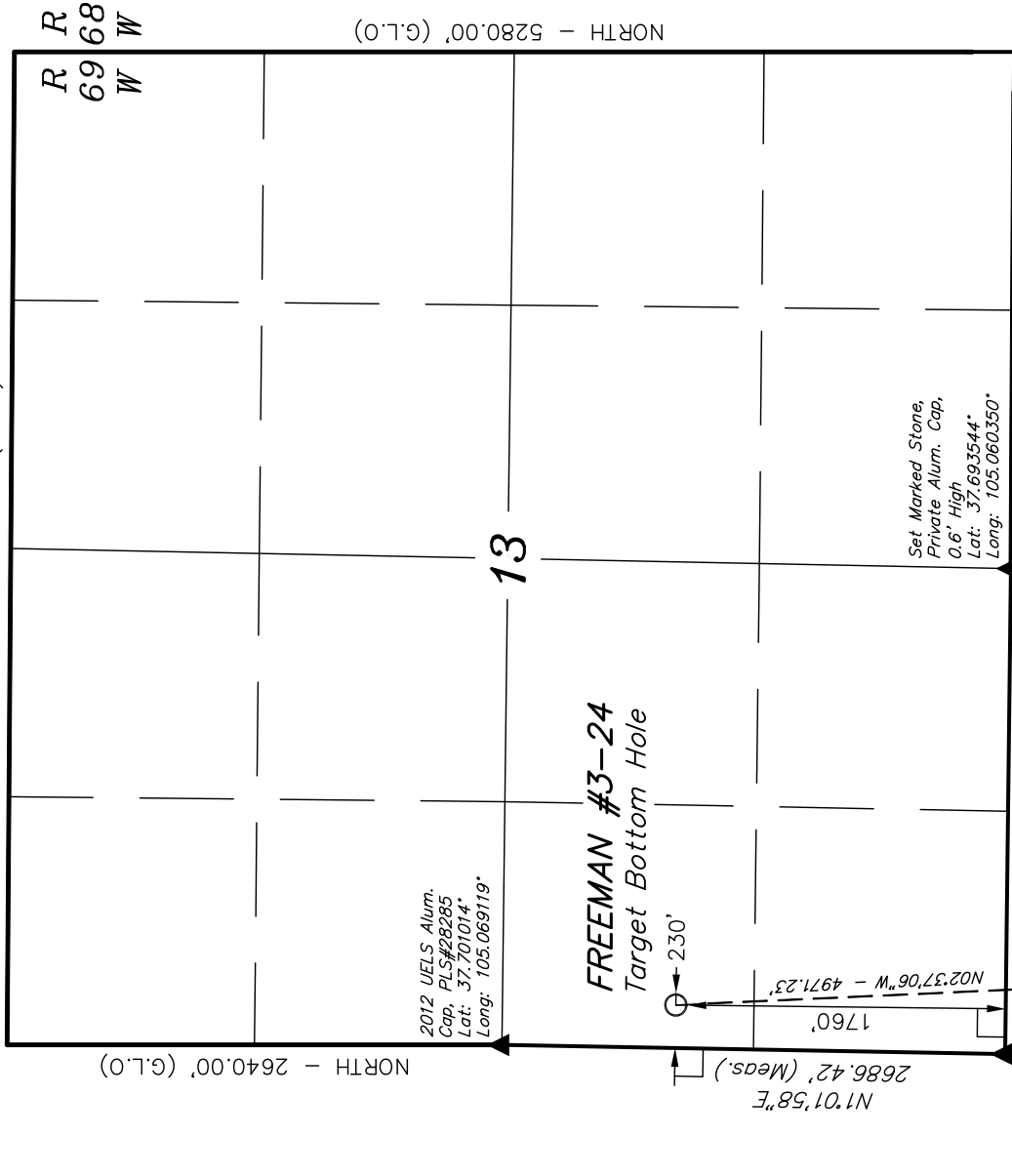
BASIS OF ELEVATION

SPOT ELEVATION IN THE NORTHEAST 1/4 OF SECTION 33, T26S, R70W, 6th P.M., TAKEN FROM THE LITTLE SHEEP MOUNTAIN QUADRANGLE, COLORADO, 7.5 MINUTE QUAD (TOPOGRAPHIC MAP) PUBLISHED BY THE UNITED STATES DEPARTMENT OF THE INTERIOR, GEOLOGICAL SURVEY. SAID ELEVATION IS MARKED AS BEING 7455 FEET.

BASIS OF BEARINGS

BASIS OF BEARINGS IS A G.P.S. OBSERVATION.

S89°35'W - 5299.80' (G.L.O.)



Set Marked Stone, 0.6' High
Lat: 37.693639°
Long: 105.069300°

S89°19'15"E - 2590.94' (Meas.)

1760'

N1°01'58"E

2686.42' (Meas.)

1760'

N02°37'06"W - 4971.23'

230'

Set Marked Stone, Private Alum. Cap, 0.6' High
Lat: 37.693544°
Long: 105.060350°

S89°39'E - 2651.22' (G.L.O.)

1760'

1760'

1760'

NOTE:
THE PROPOSED BOTTOM HOLE BEARS N02°37'06"W 4971.23' FROM THE PROPOSED WELL HEAD WHICH IS LOCATED IN THE NW 1/4 SW 1/4 OF SECTION 24, T27S, R69W, 6th P.M. AT A DISTANCE OF 2105' FSL 536' FWL

Surface Location

LEGEND:

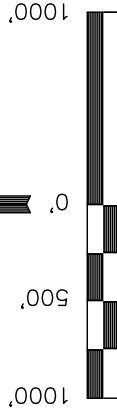
— = 90° SYMBOL

● = PROPOSED WELL HEAD.

▲ = SECTION CORNERS LOCATED.

NAD 83 (TARGET BOTTOM HOLE)
LATITUDE = 37°41'54.48" (37.698467)
LONGITUDE = 105°04'06.20" (105.068389)
NAD 27 (TARGET BOTTOM HOLE)
LATITUDE = 37°41'54.45" (37.698458)
LONGITUDE = 105°04'04.21" (105.067836)

NORTH - 5280.00' (G.L.O)



S C A L E

CERTIFICATE

THIS IS TO CERTIFY THAT THE ABOVE PLAT WAS PREPARED FROM FIELD NOTES OF ACTUAL SURVEYS MADE BY ME OR UNDER MY SUPERVISION AND THAT THE SAME ARE TRUE AND CORRECT TO THE BEST OF MY KNOWLEDGE AND BELIEF.

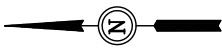
REGISTERED LAND SURVEYOR
REGISTRATION NO. 17492
STATE OF COLORADO
02-08-12

REV.: 02-08-12

UINTAH ENGINEERING & LAND SURVEYING
85 SOUTH 200 EAST - VERNAL, UTAH 84078
(435) 789-1017

SCALE 1" = 1000'	DATE SURVEYED: 01-17-12	DATE DRAWN: 01-23-12
PARTY J.H. C.M. J.I.	REFERENCES G.L.O. PLAT	
WEATHER COOL	FILE	
		SWEPI LP

SWEPI LP
ADDENDUM TO LEGAL PLAT FOR
FREEMAN #3-24
SECTION 24, T27S, R69W, 6th P.M.
2105' FSL 536' FWL



SCALE: 1" = 200'
DATE: 01-23-12
DRAWN BY: J.I.
REV.: 02-08-12

