

BILL BARRETT CORP

GARFIELD COUNTY, COLORADO NAD 1983

CBC #1

CBC 24C-22-692

Wellbore #1

Plan: Design #1

Standard Planning Report

24 January, 2012

Bill Barrett Corp
Planning Report

Database:	Compass	Local Co-ordinate Reference:	Well CBC 24C-22-692
Company:	BILL BARRETT CORP	TVD Reference:	WELL @ 5773.00ft (Original Well Elev)
Project:	GARFIELD COUNTY, COLORADO NAD 1983	MD Reference:	WELL @ 5773.00ft (Original Well Elev)
Site:	CBC #1	North Reference:	True
Well:	CBC 24C-22-692	Survey Calculation Method:	Minimum Curvature
Wellbore:	Wellbore #1		
Design:	Design #1		

Project	GARFIELD COUNTY, COLORADO NAD 1983		
Map System:	US State Plane 1983	System Datum:	Mean Sea Level
Geo Datum:	North American Datum 1983		
Map Zone:	Colorado Central Zone		

Site	CBC #1		
Site Position:		Northing:	1,617,285.528 ft
From:	Lat/Long	Easting:	2,392,460.705 ft
Position Uncertainty:	0.00 ft	Slot Radius:	"
		Latitude:	39° 30' 30.449 N
		Longitude:	107° 39' 12.4092 W
		Grid Convergence:	-1.36 °

Well	CBC 24C-22-692		
Well Position	+N/-S	0.00 ft	Northing: 1,617,285.524 ft
	+E/-W	0.00 ft	Easting: 2,392,460.705 ft
Position Uncertainty		0.00 ft	Wellhead Elevation: ft
			Latitude: 39° 30' 30.449 N
			Longitude: 107° 39' 12.4092 W
			Ground Level: 0.00 ft

Wellbore	Wellbore #1				
Magnetics	Model Name	Sample Date	Declination (°)	Dip Angle (°)	Field Strength (nT)
	IGRF2010	1/24/2012	10.12	65.80	52,241

Design	Design #1			
Audit Notes:				
Version:	Phase:	PROTOTYPE	Tie On Depth:	0.00
Vertical Section:	Depth From (TVD) (ft)	+N/-S (ft)	+E/-W (ft)	Direction (°)
	0.00	0.00	0.00	237.07

Plan Sections										
Measured Depth (ft)	Inclination (°)	Azimuth (°)	Vertical Depth (ft)	+N/-S (ft)	+E/-W (ft)	Dogleg Rate (°/100ft)	Build Rate (°/100ft)	Turn Rate (°/100ft)	TFO (°)	Target
0.00	0.00	0.00	0.00	0.00	0.00	0.00	0.00	0.00	0.00	
760.00	0.00	0.00	760.00	0.00	0.00	0.00	0.00	0.00	0.00	
1,079.31	7.98	237.07	1,078.27	-12.07	-18.64	2.50	2.50	0.00	237.07	
5,038.94	7.98	237.07	4,999.54	-310.97	-480.20	0.00	0.00	0.00	0.00	
5,571.12	0.00	0.00	5,530.00	-331.09	-511.26	1.50	-1.50	0.00	180.00	
7,571.12	0.00	0.00	7,530.00	-331.09	-511.26	0.00	0.00	0.00	0.00	CBC 24C-22-692 (1

Bill Barrett Corp

Planning Report

Database:	Compass	Local Co-ordinate Reference:	Well CBC 24C-22-692
Company:	BILL BARRETT CORP	TVD Reference:	WELL @ 5773.00ft (Original Well Elev)
Project:	GARFIELD COUNTY, COLORADO NAD 1983	MD Reference:	WELL @ 5773.00ft (Original Well Elev)
Site:	CBC #1	North Reference:	True
Well:	CBC 24C-22-692	Survey Calculation Method:	Minimum Curvature
Wellbore:	Wellbore #1		
Design:	Design #1		

Planned Survey										
Measured Depth (ft)	Inclination (°)	Azimuth (°)	Vertical Depth (ft)	+N/-S (ft)	+E/-W (ft)	Vertical Section (ft)	Dogleg Rate (°/100ft)	Build Rate (°/100ft)	Turn Rate (°/100ft)	
0.00	0.00	0.00	0.00	0.00	0.00	0.00	0.00	0.00	0.00	
100.00	0.00	0.00	100.00	0.00	0.00	0.00	0.00	0.00	0.00	
200.00	0.00	0.00	200.00	0.00	0.00	0.00	0.00	0.00	0.00	
300.00	0.00	0.00	300.00	0.00	0.00	0.00	0.00	0.00	0.00	
400.00	0.00	0.00	400.00	0.00	0.00	0.00	0.00	0.00	0.00	
500.00	0.00	0.00	500.00	0.00	0.00	0.00	0.00	0.00	0.00	
600.00	0.00	0.00	600.00	0.00	0.00	0.00	0.00	0.00	0.00	
700.00	0.00	0.00	700.00	0.00	0.00	0.00	0.00	0.00	0.00	
760.00	0.00	0.00	760.00	0.00	0.00	0.00	0.00	0.00	0.00	
800.00	1.00	237.07	800.00	-0.19	-0.29	0.35	2.50	2.50	0.00	
900.00	3.50	237.07	899.91	-2.32	-3.59	4.27	2.50	2.50	0.00	
1,000.00	6.00	237.07	999.56	-6.82	-10.54	12.55	2.50	2.50	0.00	
1,079.31	7.98	237.07	1,078.27	-12.07	-18.64	22.21	2.50	2.50	0.00	
1,100.00	7.98	237.07	1,098.77	-13.63	-21.05	25.08	0.00	0.00	0.00	
1,200.00	7.98	237.07	1,197.80	-21.18	-32.71	38.97	0.00	0.00	0.00	
1,300.00	7.98	237.07	1,296.83	-28.73	-44.37	52.86	0.00	0.00	0.00	
1,400.00	7.98	237.07	1,395.86	-36.28	-56.02	66.74	0.00	0.00	0.00	
1,500.00	7.98	237.07	1,494.89	-43.83	-67.68	80.63	0.00	0.00	0.00	
1,600.00	7.98	237.07	1,593.92	-51.38	-79.34	94.52	0.00	0.00	0.00	
1,700.00	7.98	237.07	1,692.95	-58.92	-90.99	108.40	0.00	0.00	0.00	
1,800.00	7.98	237.07	1,791.98	-66.47	-102.65	122.29	0.00	0.00	0.00	
1,900.00	7.98	237.07	1,891.02	-74.02	-114.30	136.18	0.00	0.00	0.00	
2,000.00	7.98	237.07	1,990.05	-81.57	-125.96	150.07	0.00	0.00	0.00	
2,100.00	7.98	237.07	2,089.08	-89.12	-137.62	163.95	0.00	0.00	0.00	
2,200.00	7.98	237.07	2,188.11	-96.67	-149.27	177.84	0.00	0.00	0.00	
2,300.00	7.98	237.07	2,287.14	-104.22	-160.93	191.73	0.00	0.00	0.00	
2,400.00	7.98	237.07	2,386.17	-111.76	-172.59	205.62	0.00	0.00	0.00	
2,500.00	7.98	237.07	2,485.20	-119.31	-184.24	219.50	0.00	0.00	0.00	
2,600.00	7.98	237.07	2,584.23	-126.86	-195.90	233.39	0.00	0.00	0.00	
2,700.00	7.98	237.07	2,683.26	-134.41	-207.56	247.28	0.00	0.00	0.00	
2,800.00	7.98	237.07	2,782.29	-141.96	-219.21	261.16	0.00	0.00	0.00	
2,900.00	7.98	237.07	2,881.33	-149.51	-230.87	275.05	0.00	0.00	0.00	
3,000.00	7.98	237.07	2,980.36	-157.06	-242.53	288.94	0.00	0.00	0.00	
3,100.00	7.98	237.07	3,079.39	-164.60	-254.18	302.83	0.00	0.00	0.00	
3,200.00	7.98	237.07	3,178.42	-172.15	-265.84	316.71	0.00	0.00	0.00	
3,300.00	7.98	237.07	3,277.45	-179.70	-277.50	330.60	0.00	0.00	0.00	
3,400.00	7.98	237.07	3,376.48	-187.25	-289.15	344.49	0.00	0.00	0.00	
3,500.00	7.98	237.07	3,475.51	-194.80	-300.81	358.38	0.00	0.00	0.00	
3,600.00	7.98	237.07	3,574.54	-202.35	-312.47	372.26	0.00	0.00	0.00	
3,700.00	7.98	237.07	3,673.57	-209.90	-324.12	386.15	0.00	0.00	0.00	
3,800.00	7.98	237.07	3,772.61	-217.45	-335.78	400.04	0.00	0.00	0.00	
3,900.00	7.98	237.07	3,871.64	-224.99	-347.44	413.92	0.00	0.00	0.00	
4,000.00	7.98	237.07	3,970.67	-232.54	-359.09	427.81	0.00	0.00	0.00	
4,100.00	7.98	237.07	4,069.70	-240.09	-370.75	441.70	0.00	0.00	0.00	
4,200.00	7.98	237.07	4,168.73	-247.64	-382.41	455.59	0.00	0.00	0.00	
4,300.00	7.98	237.07	4,267.76	-255.19	-394.06	469.47	0.00	0.00	0.00	
4,400.00	7.98	237.07	4,366.79	-262.74	-405.72	483.36	0.00	0.00	0.00	
4,500.00	7.98	237.07	4,465.82	-270.29	-417.38	497.25	0.00	0.00	0.00	
4,600.00	7.98	237.07	4,564.85	-277.83	-429.03	511.14	0.00	0.00	0.00	
4,700.00	7.98	237.07	4,663.88	-285.38	-440.69	525.02	0.00	0.00	0.00	
4,800.00	7.98	237.07	4,762.92	-292.93	-452.34	538.91	0.00	0.00	0.00	
4,900.00	7.98	237.07	4,861.95	-300.48	-464.00	552.80	0.00	0.00	0.00	
5,000.00	7.98	237.07	4,960.98	-308.03	-475.66	566.68	0.00	0.00	0.00	

Bill Barrett Corp

Planning Report

Database:	Compass	Local Co-ordinate Reference:	Well CBC 24C-22-692
Company:	BILL BARRETT CORP	TVD Reference:	WELL @ 5773.00ft (Original Well Elev)
Project:	GARFIELD COUNTY, COLORADO NAD 1983	MD Reference:	WELL @ 5773.00ft (Original Well Elev)
Site:	CBC #1	North Reference:	True
Well:	CBC 24C-22-692	Survey Calculation Method:	Minimum Curvature
Wellbore:	Wellbore #1		
Design:	Design #1		

Planned Survey

Measured Depth (ft)	Inclination (°)	Azimuth (°)	Vertical Depth (ft)	+N/-S (ft)	+E/-W (ft)	Vertical Section (ft)	Dogleg Rate (°/100ft)	Build Rate (°/100ft)	Turn Rate (°/100ft)
5,038.94	7.98	237.07	4,999.54	-310.97	-480.20	572.09	0.00	0.00	0.00
5,100.00	7.07	237.07	5,060.07	-315.31	-486.91	580.09	1.50	-1.50	0.00
5,200.00	5.57	237.07	5,159.46	-321.29	-496.14	591.09	1.50	-1.50	0.00
5,300.00	4.07	237.07	5,259.11	-325.86	-503.19	599.49	1.50	-1.50	0.00
5,400.00	2.57	237.07	5,358.94	-329.00	-508.05	605.27	1.50	-1.50	0.00
5,500.00	1.07	237.07	5,458.88	-330.73	-510.71	608.44	1.50	-1.50	0.00
5,571.12	0.00	0.00	5,530.00	-331.09	-511.26	609.11	1.50	-1.50	0.00
5,600.00	0.00	0.00	5,558.88	-331.09	-511.26	609.11	0.00	0.00	0.00
5,700.00	0.00	0.00	5,658.88	-331.09	-511.26	609.11	0.00	0.00	0.00
5,800.00	0.00	0.00	5,758.88	-331.09	-511.26	609.11	0.00	0.00	0.00
5,900.00	0.00	0.00	5,858.88	-331.09	-511.26	609.11	0.00	0.00	0.00
6,000.00	0.00	0.00	5,958.88	-331.09	-511.26	609.11	0.00	0.00	0.00
6,100.00	0.00	0.00	6,058.88	-331.09	-511.26	609.11	0.00	0.00	0.00
6,200.00	0.00	0.00	6,158.88	-331.09	-511.26	609.11	0.00	0.00	0.00
6,300.00	0.00	0.00	6,258.88	-331.09	-511.26	609.11	0.00	0.00	0.00
6,400.00	0.00	0.00	6,358.88	-331.09	-511.26	609.11	0.00	0.00	0.00
6,500.00	0.00	0.00	6,458.88	-331.09	-511.26	609.11	0.00	0.00	0.00
6,600.00	0.00	0.00	6,558.88	-331.09	-511.26	609.11	0.00	0.00	0.00
6,700.00	0.00	0.00	6,658.88	-331.09	-511.26	609.11	0.00	0.00	0.00
6,800.00	0.00	0.00	6,758.88	-331.09	-511.26	609.11	0.00	0.00	0.00
6,900.00	0.00	0.00	6,858.88	-331.09	-511.26	609.11	0.00	0.00	0.00
7,000.00	0.00	0.00	6,958.88	-331.09	-511.26	609.11	0.00	0.00	0.00
7,100.00	0.00	0.00	7,058.88	-331.09	-511.26	609.11	0.00	0.00	0.00
7,200.00	0.00	0.00	7,158.88	-331.09	-511.26	609.11	0.00	0.00	0.00
7,300.00	0.00	0.00	7,258.88	-331.09	-511.26	609.11	0.00	0.00	0.00
7,400.00	0.00	0.00	7,358.88	-331.09	-511.26	609.11	0.00	0.00	0.00
7,500.00	0.00	0.00	7,458.88	-331.09	-511.26	609.11	0.00	0.00	0.00
7,571.12	0.00	0.00	7,530.00	-331.09	-511.26	609.11	0.00	0.00	0.00

Formations

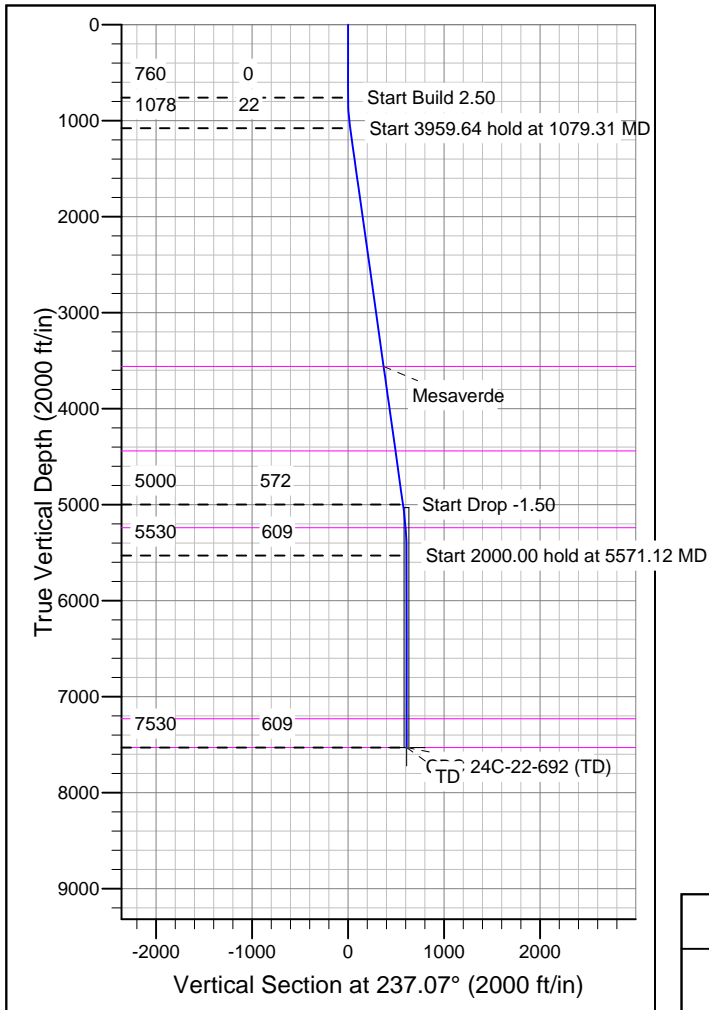
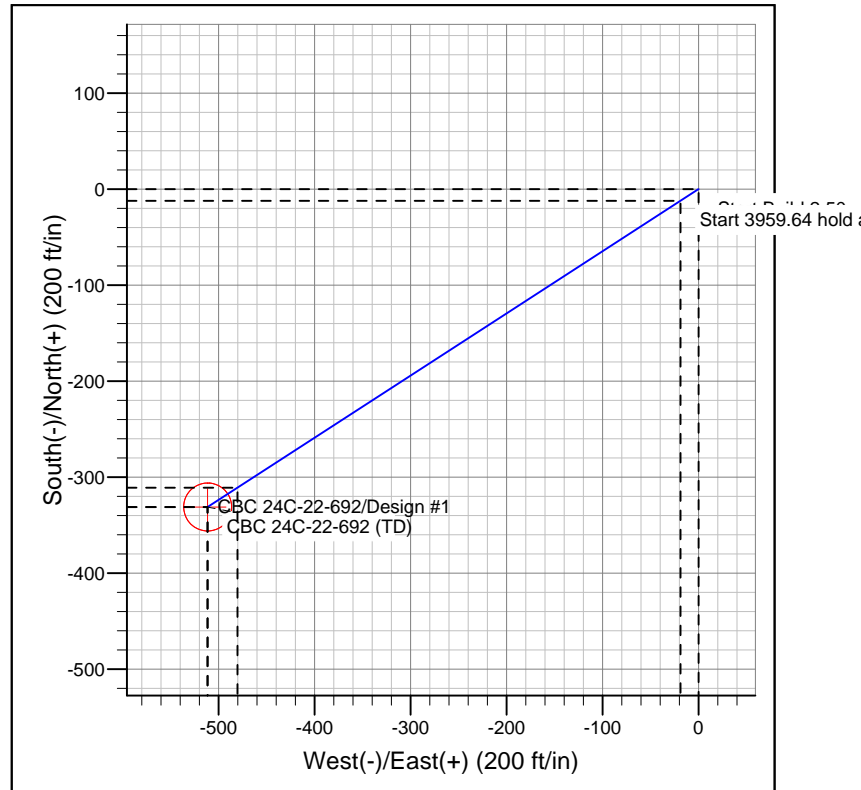
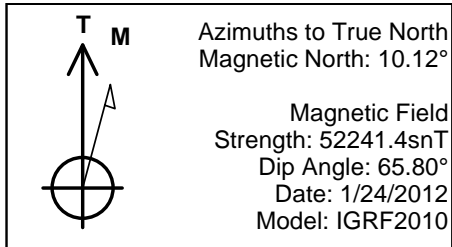
Measured Depth (ft)	Vertical Depth (ft)	Name	Lithology	Dip (°)	Dip Direction (°)
3,585.31	3,560.00	Mesaverde		0.00	
4,473.93	4,440.00	Price Coal		0.00	
5,280.84	5,240.00	Top Gas		0.00	
7,271.12	7,230.00	Rollins		0.00	
7,571.12	7,530.00	TD		0.00	

WELL DETAILS: CBC 24C-22-692

+N/-S	+E/-W	Northing	Easting	Ground Level:	0.00	Latitude	Longitude	Slot
0.00	0.00	1617285.524	2392460.705	39° 30' 30.449 N	07° 39' 12.4092 W			

SECTION DETAILS

Sec	MD	Inc	Azi	TVD	+N/-S	+E/-W	DLeg	TFace	VSec	Target
1	0.00	0.00	0.00	0.00	0.00	0.00	0.00	0.00	0.00	
2	760.00	0.00	0.00	760.00	0.00	0.00	0.00	0.00	0.00	
3	1079.31	7.98	237.07	1078.27	-12.07	-18.64	2.50	237.07	22.21	
4	5038.94	7.98	237.07	4999.54	-310.97	-480.20	0.00	0.00	572.09	
5	5571.12	0.00	0.00	5530.00	-331.09	-511.26	1.50	180.00	609.11	
6	7571.12	0.00	0.00	7530.00	-331.09	-511.26	0.00	0.00	609.11	CBC 24C-22-692 (TD)



FORMATION TOP DETAILS

TVDPath	MDPath	Formation
3560.00	3585.31	Mesaverde
4440.00	4473.93	Price Coal
5240.00	5280.84	Top Gas
7230.00	7271.12	Rollins
7530.00	7571.12	TD

REFERENCE INFORMATION

Co-ordinate (N/E) Reference: Well CBC 24C-22-692, True North
 Vertical (TVD) Reference: WELL @ 5773.00ft (Original Well Elev)
 Section (VS) Reference: Slot - (0.00N, 0.00E)
 Measured Depth Reference: WELL @ 5773.00ft (Original Well Elev)
 Calculation Method: Minimum Curvature