

Boundary Boys, LLC

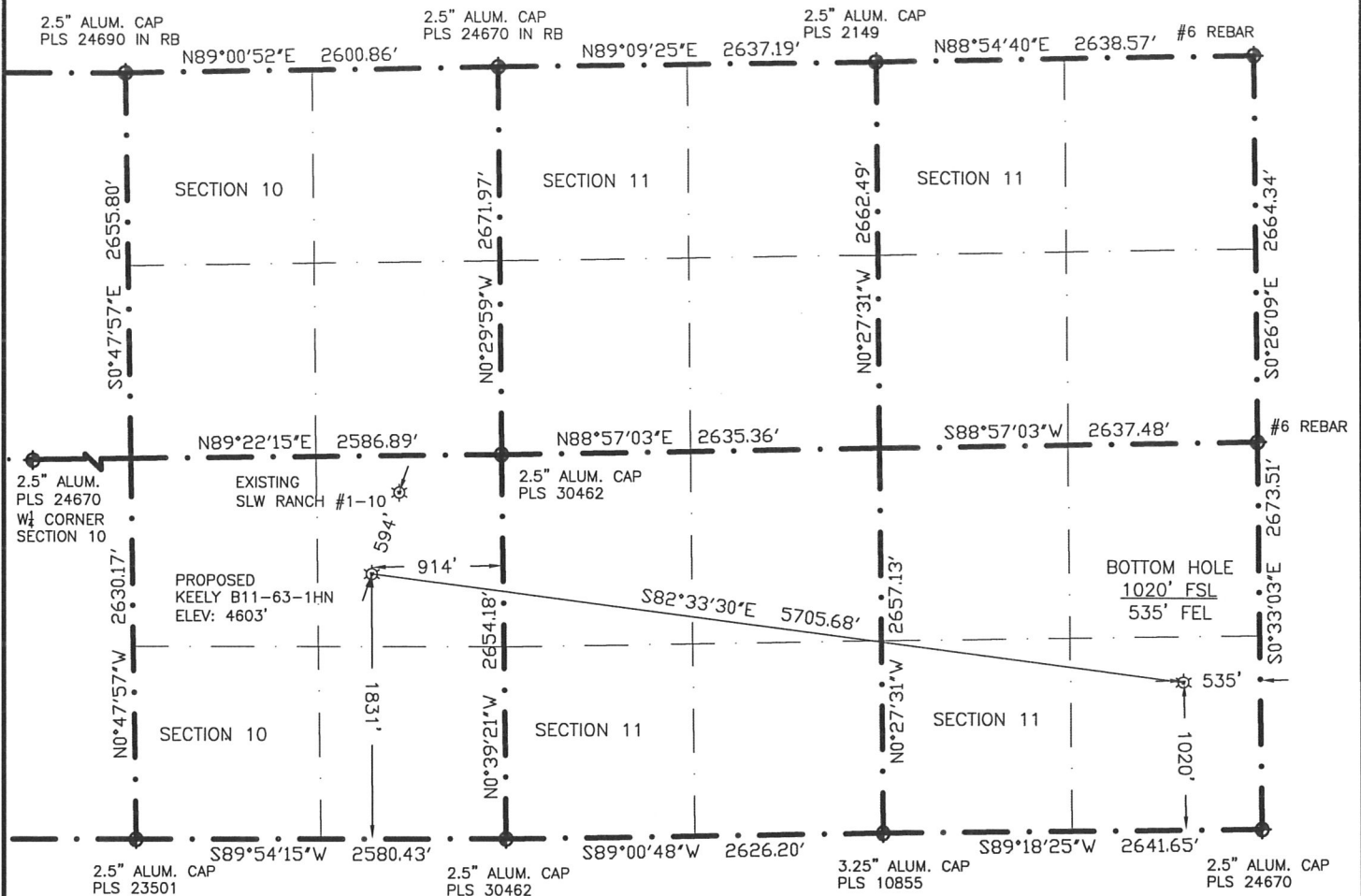
PO Box 461122

Aurora, CO 80046

WELL LOCATION CERTIFICATE

THIS MAP DOES NOT REPRESENT A BOUNDARY SURVEY

SECTIONS 10&11
TOWNSHIP 5N
RANGE 64W



LATITUDE & LONGITUDE (NAD83 SURFACE HOLE)

LATITUDE: N 40.41151

LONGITUDE: W 104.53034

PDOP: 1.7

QUARTER-QUARTER: NE¼SE¼, SECTION 10

NEAREST PROPERTY LINE: 412' NORTHEAST

IN ACCORDANCE WITH A REQUEST BY ERIK VAN DECAR-NOBLE ENERGY INC., BOUNDARY BOYS, LLC., HAS DETERMINED THE LOCATION OF THE KEELY-B11-63-1HN WELL TO BE 1831' FSL, 914' FEL, AS MEASURED AT NINETY (90) DEGREES FROM THE SECTION LINES, AND THE BOTTOM HOLE TO BE 1020' FSL, 535' FEL, SECTIONS 10 AND 11, TOWNSHIP 5 NORTH, RANGE 64 WEST, 6TH PRINCIPLE MERIDIAN, WELD COUNTY, COLORADO

I HEREBY CERTIFY THAT THIS WELL LOCATION CERTIFICATE WAS PREPARED BY ME, OR UNDER MY DIRECT SUPERVISION, THAT THE FIELD WORK WAS COMPLETED ON NOVEMBER 7, 2011 FOR AND ON BEHALF OF NOBLE ENERGY INC., THAT IT IS NOT A LAND SURVEY PLAT OR AN IMPROVEMENT SURVEY PLAT, AND THAT IT IS NOT TO BE RELIED UPON FOR ESTABLISHMENT OF FENCE, BUILDING, OR OTHER FUTURE IMPROVEMENT LINES.

LATITUDE & LONGITUDE (NAD83 BOTTOM HOLE)

LATITUDE: N 40.40931

LONGITUDE: W 104.51005

QUARTER-QUARTER: SE¼SE¼, SECTION 11

0 1200
SCALE: 1"=1200'

- 1) BASIS OF BEARINGS FOR THIS MAP ARE BASED UPON GPS OBSERVATIONS MADE ON NOVEMBER 7, 2011 BETWEEN MONUMENTS LOCATED AT THE NORTHWEST CORNER AND THE NE CORNER OF SAID SECTION 11 AND WITH ALL OTHER BEARINGS SHOWN HEREON RELATIVE THERETO.
- 2) ELEVATIONS ARE BASED UPON NGS OPUS SOLUTION, NAVD 88 DATUM
- 3) THE NEAREST EXISTING WELL IS SLW RANCH #1-10, 594' NORTH
- 4) SEE VISIBLE IMPROVEMENTS EXHIBIT FOR ALL IMPROVEMENTS WITH 400' IMPROVEMENT BUFFER
- 5) THE LOCATION FALLS IN PASTURE LAND

NOTICE: According to Colorado law you MUST commence any legal action based upon any defect in this W.L.C. within three years after you first discover such defect. In no event may any action based upon any defect in this W.L.C. be commenced more than ten years from this said date of the certification shown hereon.

LEGEND



FOUND SURVEY MONUMENT PER
MONUMENT RECORD-EXCEPTIONS NOTED



(C) CALCULATED

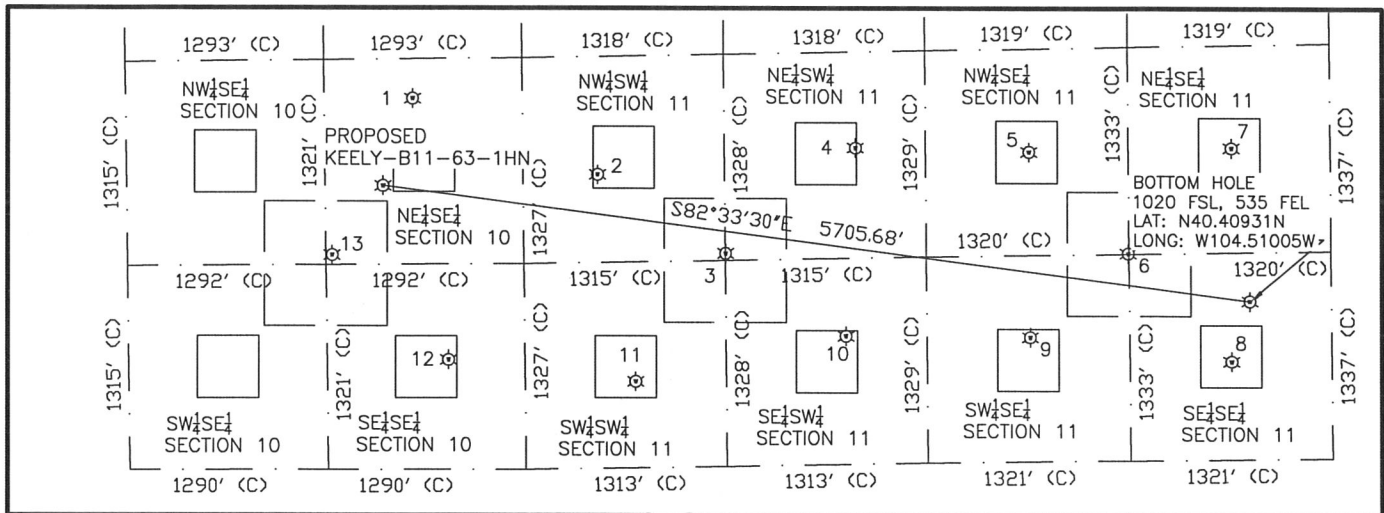


EXISTING WELL HEAD
(UNLESS OTHERWISE NOTED)

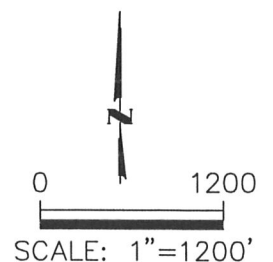


Gregory A. Clark
Professional Land Surveyor Registration No. 32430
State of Colorado

Job No. 1N0B0105



- | | | | | | |
|--|--|---|---|---|---|
| <p>①
SLW RANCH #1-10
NE$\frac{1}{4}$SE$\frac{1}{4}$ (SECTION 10)
2393' FSL
717' FEL
LAT- 40.41304N
LONG- 104.52963W
PDOP 2.0
ELEV. 4609'</p> | <p>②
TREBOR B11-12
NW$\frac{1}{4}$SE$\frac{1}{4}$ (SECTION 11)
1894' FSL
487' FWL
LAT- 40.41166N
LONG- 104.52530W
PDOP 2.0
ELEV. 4603'</p> | <p>③
TREBOR B11-25
NE$\frac{1}{4}$SW$\frac{1}{4}$ (SECTION 11)
1373' FSL
1318' FWL
LAT- 40.41025N
LONG- 104.52232W
PDOP 1.7
ELEV. 4599'</p> | <p>④
TREBOR B11-11
NE$\frac{1}{4}$SW$\frac{1}{4}$ (SECTION 11)
2037' FSL
2175' FWL
LAT- 40.41209N
LONG- 104.51924W
PDOP 2.5
ELEV. 4598'</p> | <p>⑤
TREBOR B11-10
NW$\frac{1}{4}$SE$\frac{1}{4}$ (SECTION 11)
1997' FSL
1964' FEL
LAT- 40.41199N
LONG- 104.51518W
PDOP 2.6
ELEV. 4597'</p> | <p>⑥
TREBOR B11-23
NE$\frac{1}{4}$SE$\frac{1}{4}$ (SECTION 11)
1335' FSL
1325' FEL
LAT- 40.41017N
LONG- 104.51289W
PDOP 1.7
ELEV. 4595'</p> |
| <p>⑦
TREBOR B11-9
NE$\frac{1}{4}$SE$\frac{1}{4}$ (SECTION 11)
2007' FSL
648' FEL
LAT- 40.41202N
LONG- 104.51045W
PDOP 1.7
ELEV. 4598'</p> | <p>⑧
TREBOR B11-16
SE$\frac{1}{4}$SE$\frac{1}{4}$ (SECTION 11)
633' FSL
659' FEL
LAT- 40.40824N
LONG- 104.51050W
PDOP 1.6
ELEV. 4596'</p> | <p>⑨
TREBOR B11-15
SW$\frac{1}{4}$SE$\frac{1}{4}$ (SECTION 11)
803' FSL
1966' FEL
LAT- 40.40871N
LONG- 104.51519W
PDOP 1.6
ELEV. 4598'</p> | <p>⑩
TREBOR B11-14
SE$\frac{1}{4}$SW$\frac{1}{4}$ (SECTION 11)
827' FSL
2098' FWL
LAT- 40.40876N
LONG- 104.51952W
PDOP 1.6
ELEV. 4596'</p> | <p>⑪
TREBOR B11-13
SW$\frac{1}{4}$SW$\frac{1}{4}$ (SECTION 11)
557' FSL
721' FWL
LAT- 40.40800N
LONG- 104.52445W
PDOP 1.7
ELEV. 4600'</p> | <p>⑫
SLW B10-16
SE$\frac{1}{4}$SE$\frac{1}{4}$ (SECTION 10)
709' FSL
500' FEL
LAT- 40.40842N
LONG- 104.52885W
PDOP 1.7
ELEV. 4601'</p> |
| <p>⑬
PECOCK-B10-23
NE$\frac{1}{4}$SE$\frac{1}{4}$ (SECTION 10)
1385' FSL
1251' FEL
LAT- 40.41028N
LONG- 104.53155W
PDOP 1.7
ELEV. 4601'</p> | | | | | |



1) THIS SKETCH DOES NOT REPRESENT A BOUNDARY SURVEY
2) THE DATUM FOR THE LATITUDES AND LONGITUDES ON THIS SKETCH IS NAD83