

<<< Fold Here >>>

Comments

Comments

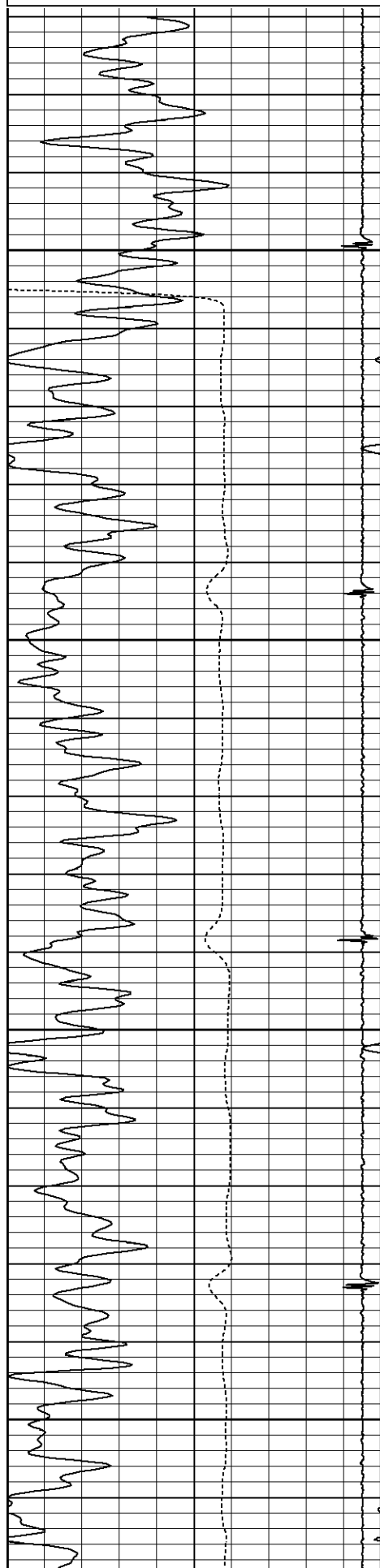
Thank You For Choosing Superior Well Services!!!
API# 05-001-09737-0000
Correlated to PSI's
High Resolution Induction / Compensated Density / Compensated Neutron Log
Dated February 13, 2012
Directions: HWY 7 & Quebec ST, N 1/2, E 1/2, N Into

Database File:	cb1zarlengo 6-4.db
Dataset Pathname:	pass2
Presentation Format:	noble en
Dataset Creation:	Tue Mar 20 07:45:49 2012 by Log SCH 111116
Charted by:	Depth in Feet scaled 1:240

80	CCL	-4
30	Gamma Ray (GAPI)	130
340	TT3 (usec)	240

0	Amplified Amplitude (mV)	30
0	Amplitude (mV)	100

Variable Density	1200
------------------	------

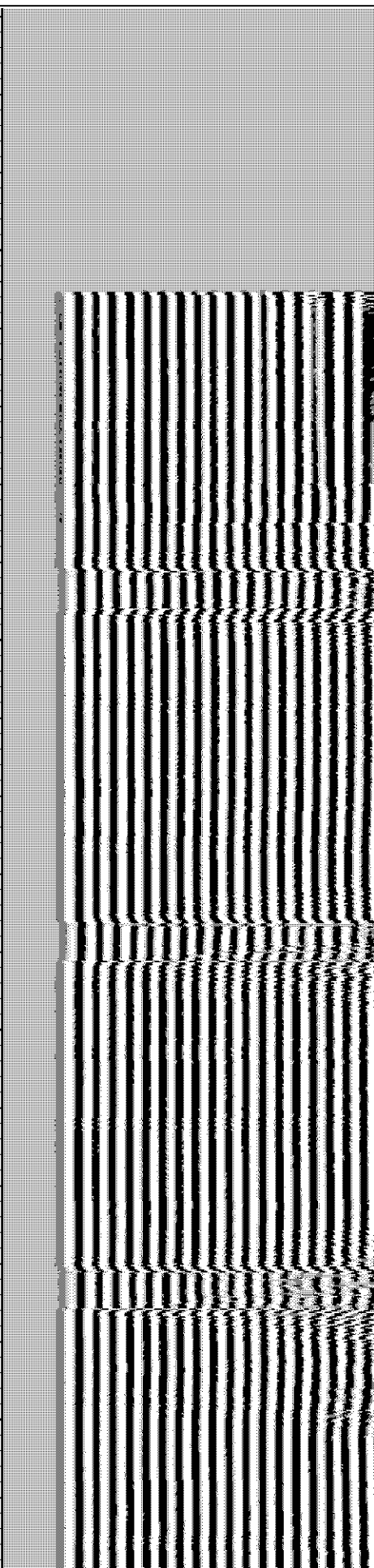
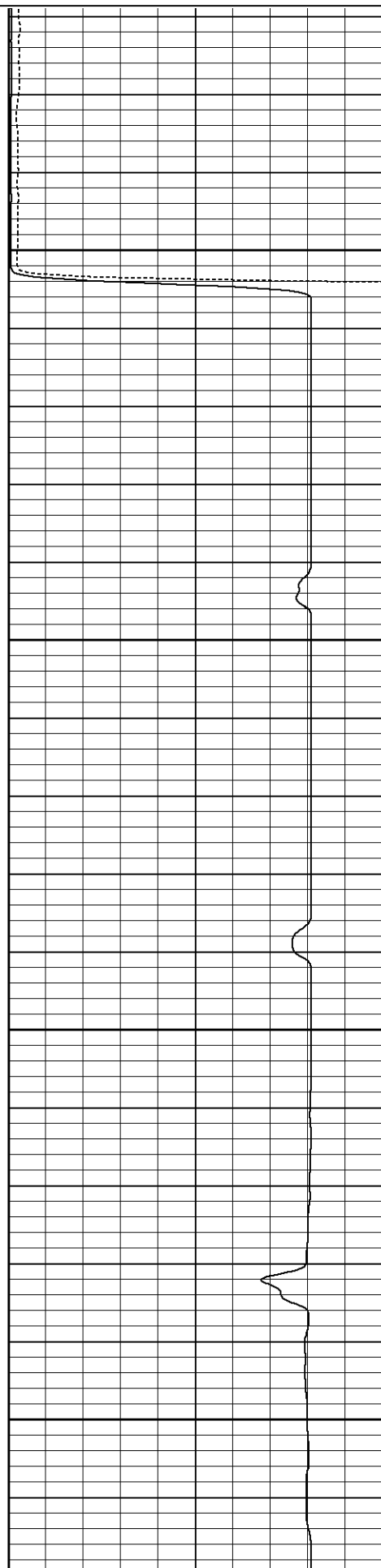


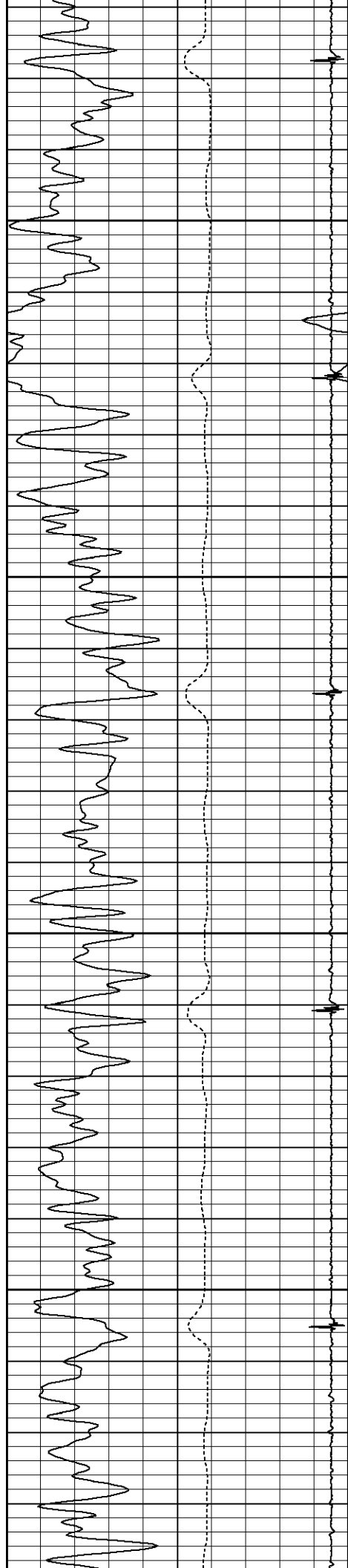
50

100

150

200



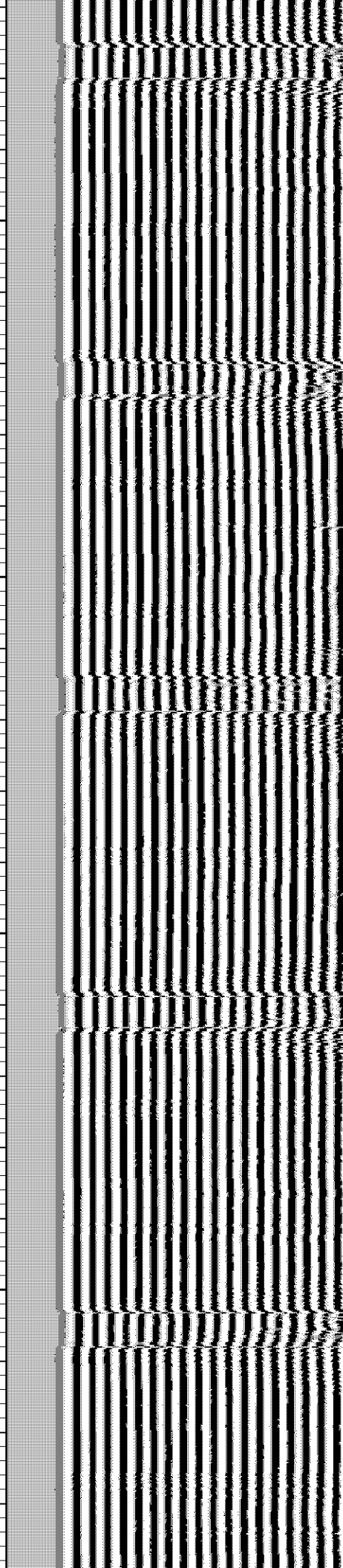
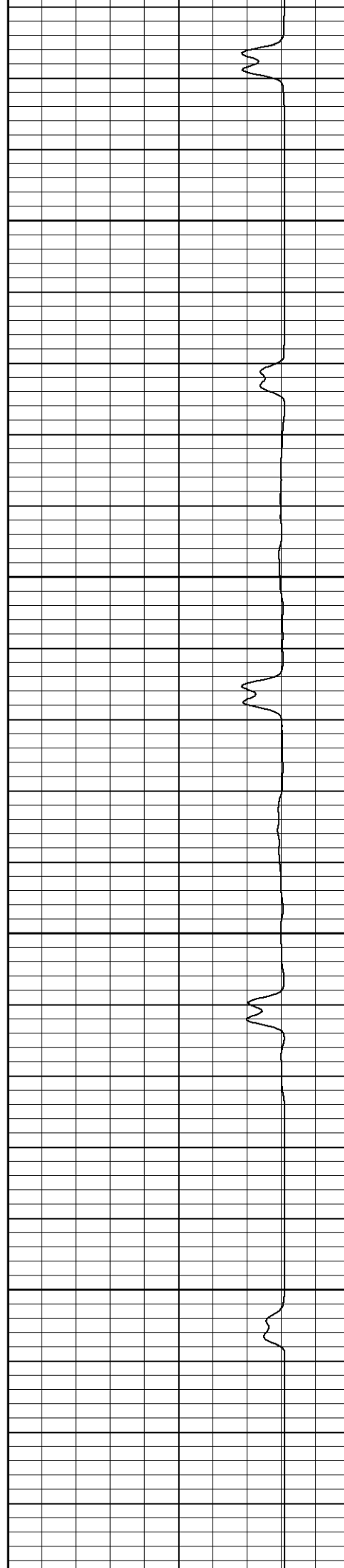


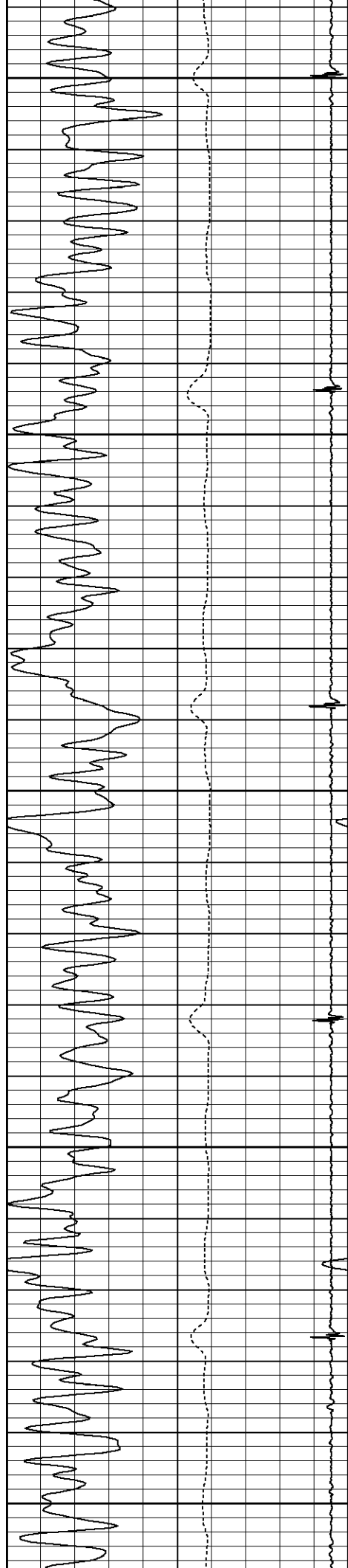
250

300

350

400





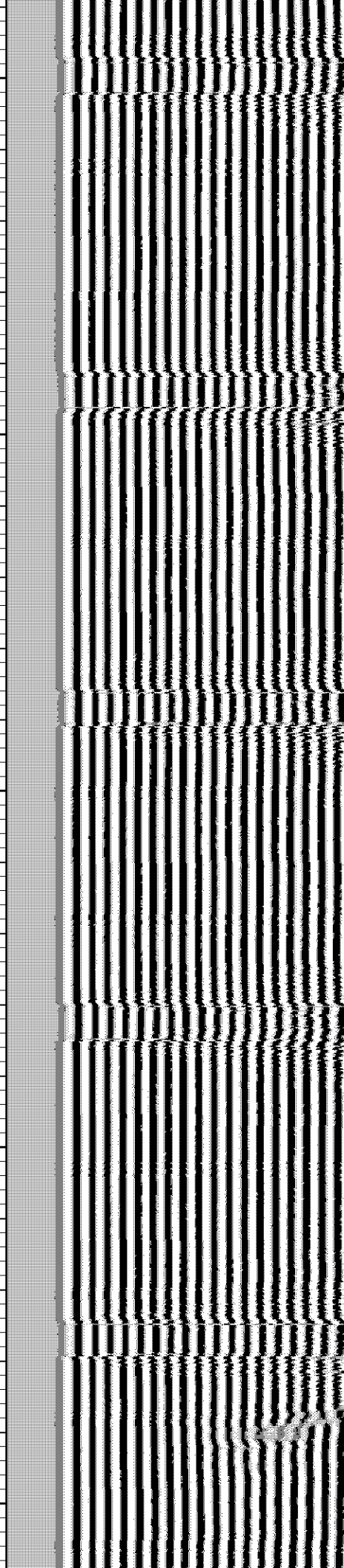
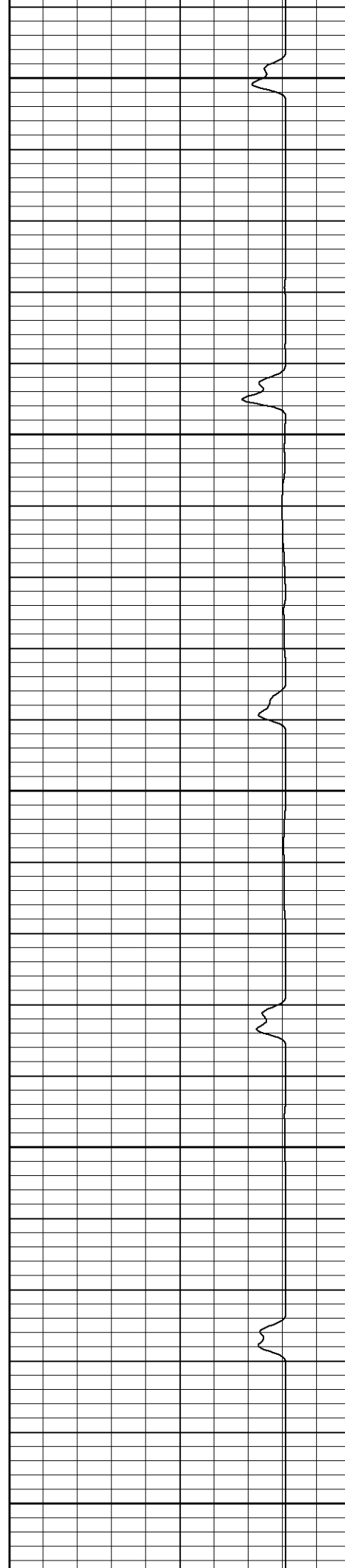
450

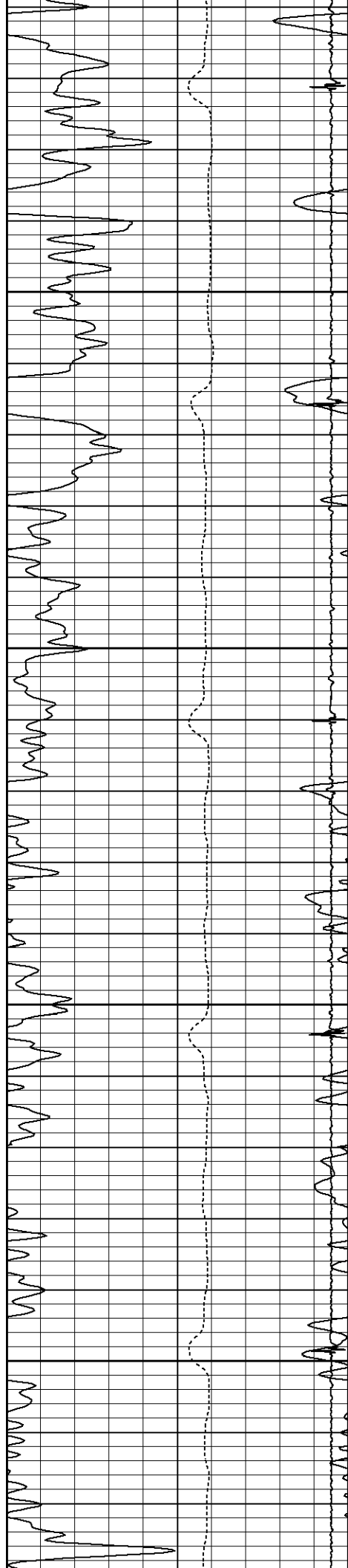
500

550

600

650



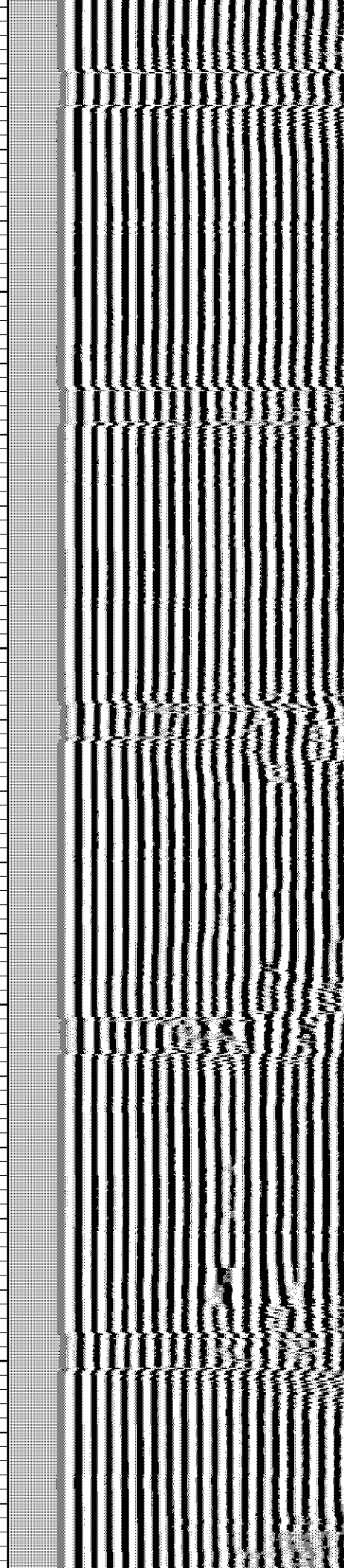
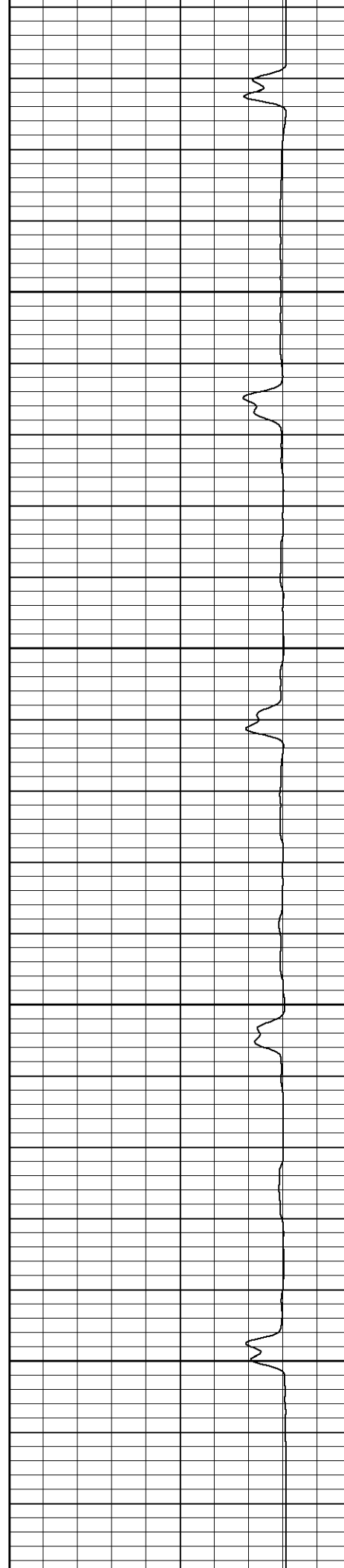


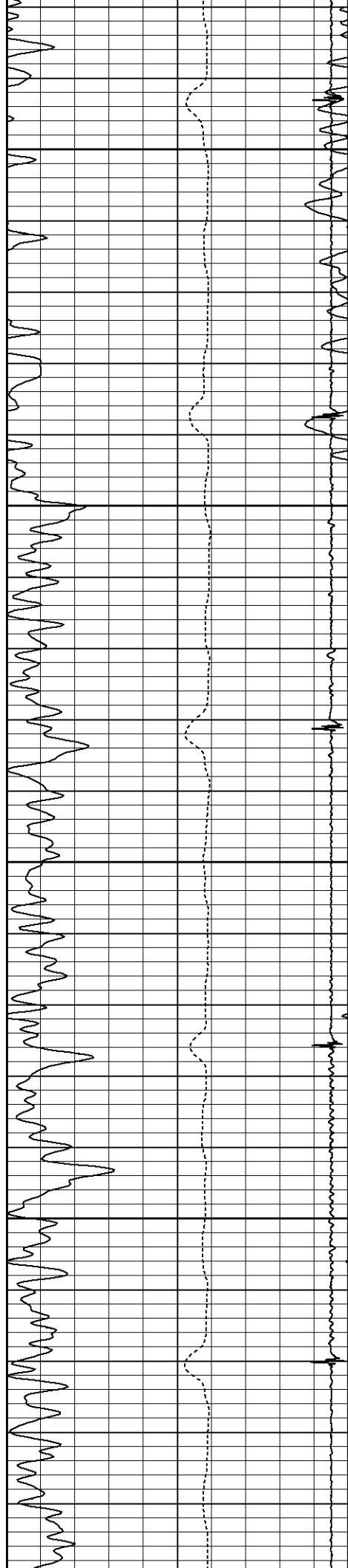
700

750

800

850



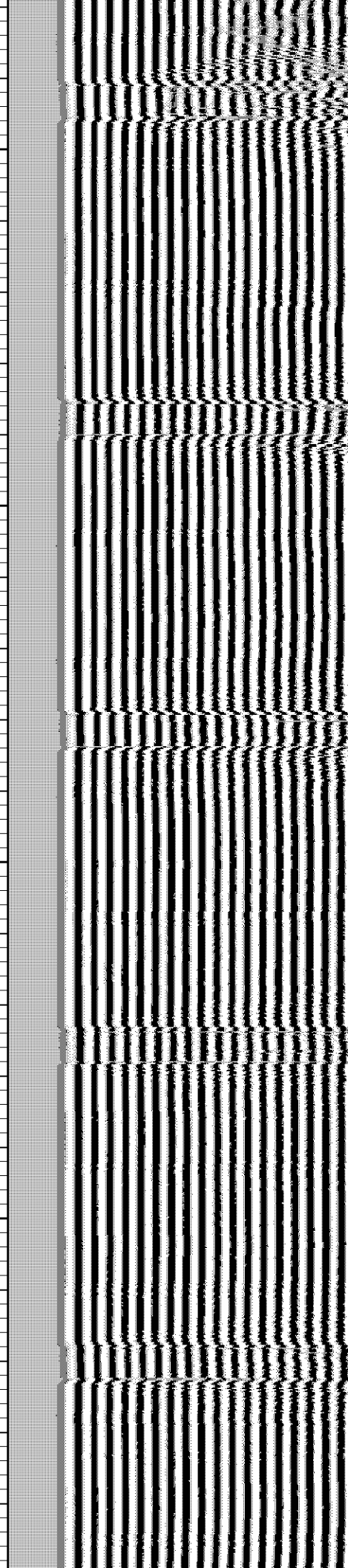
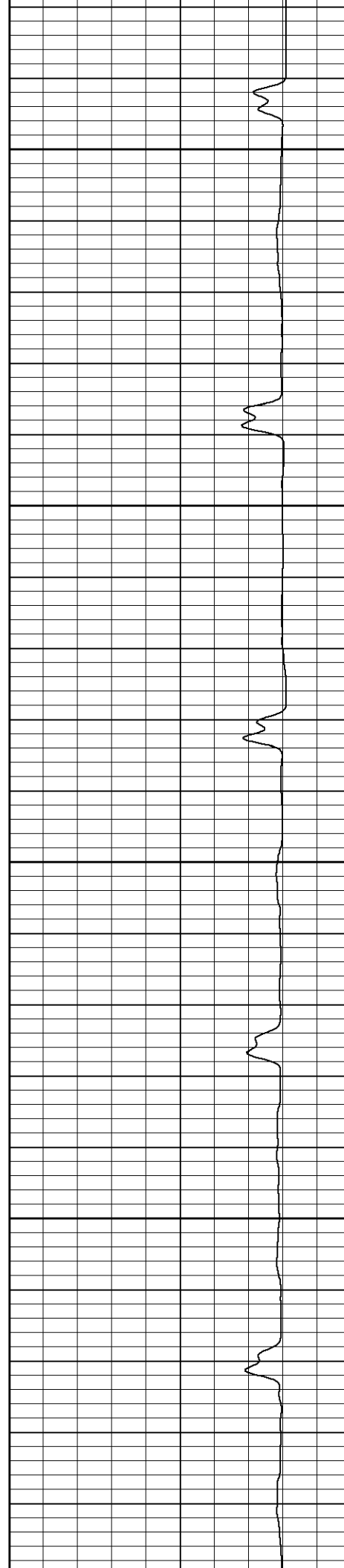


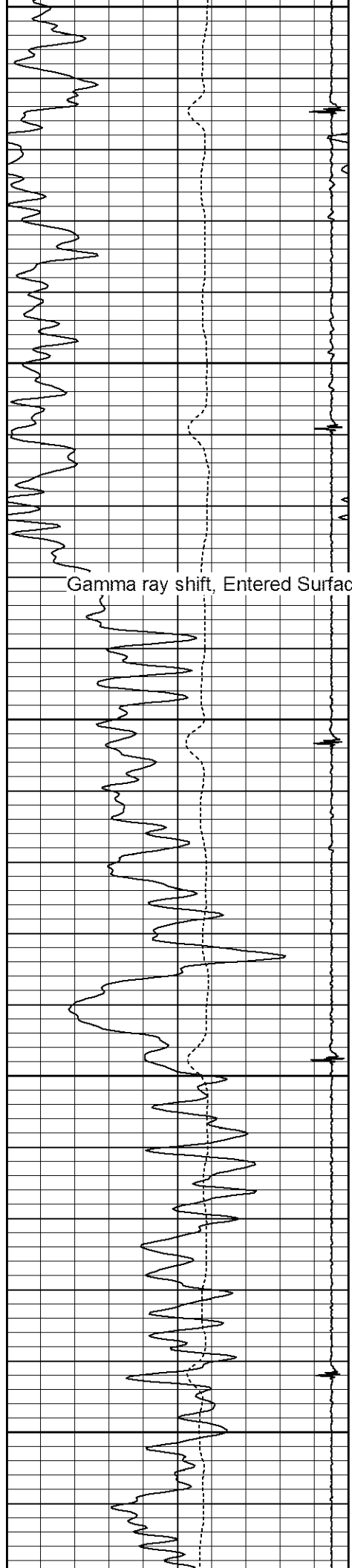
900

950

1000

1050





1100

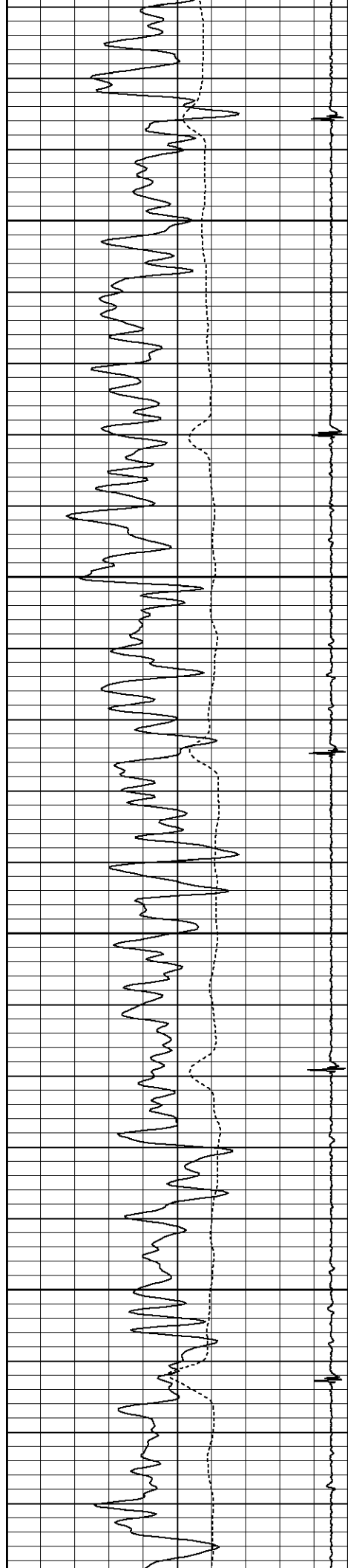
1150

1200

1250

1300

Gamma ray shift, Entered Surface Casing



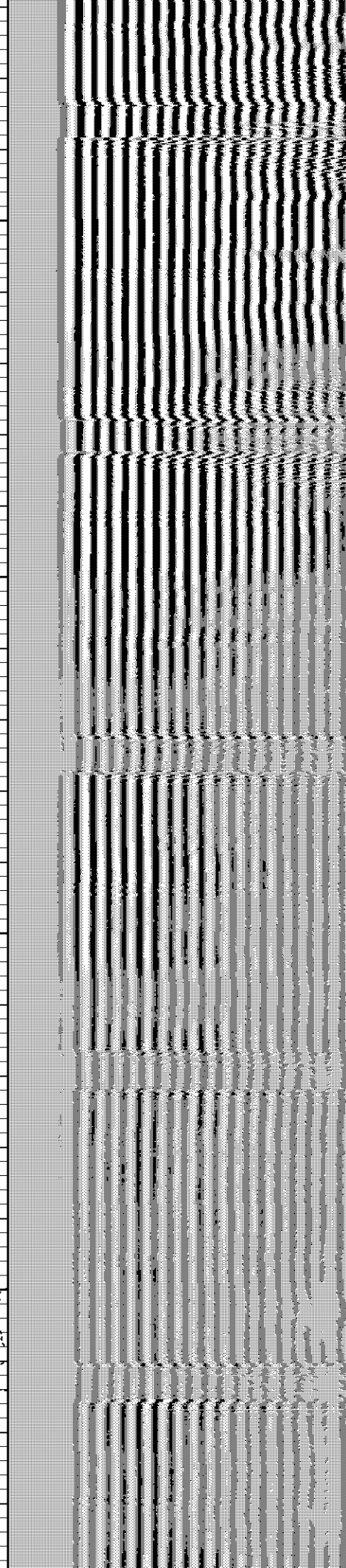
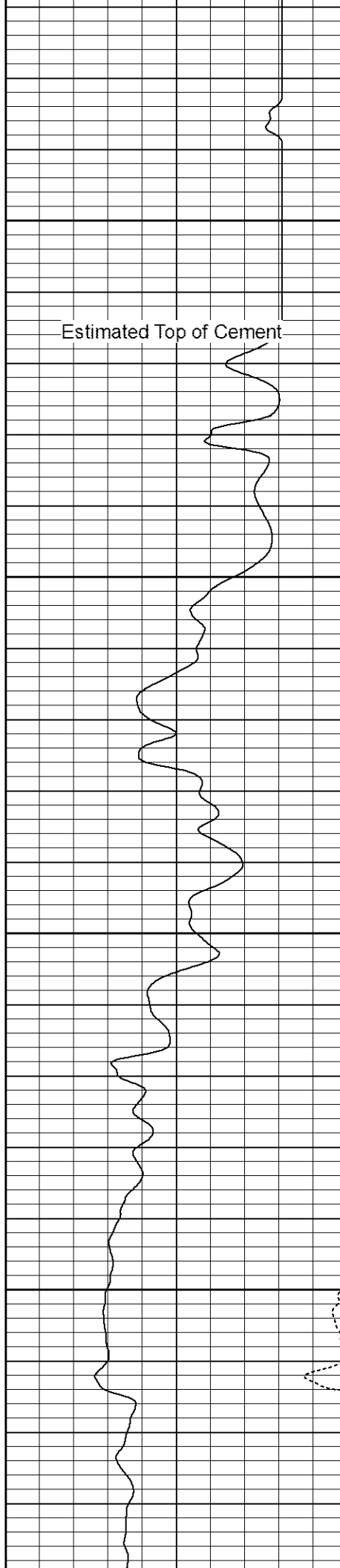
1350

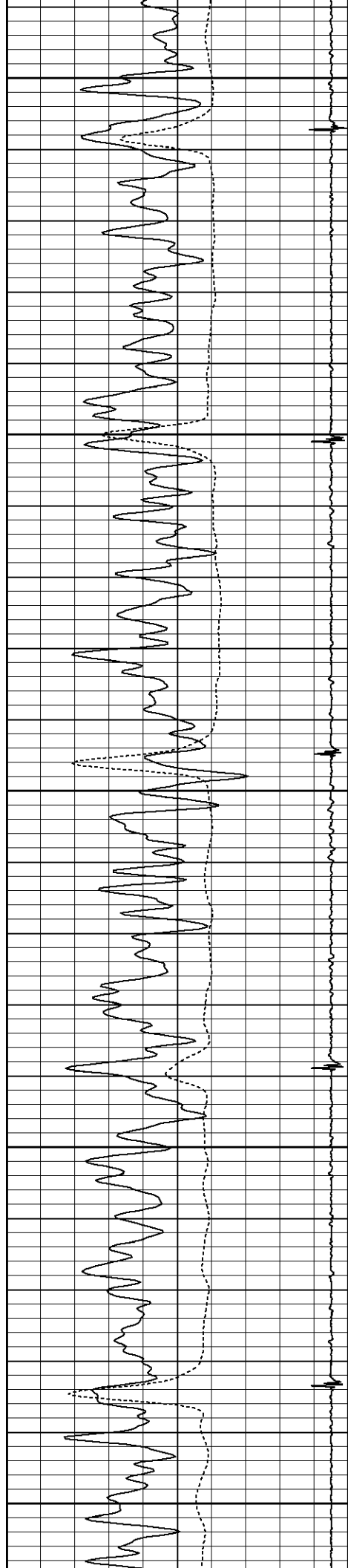
Estimated Top of Cement

1400

1450

1500





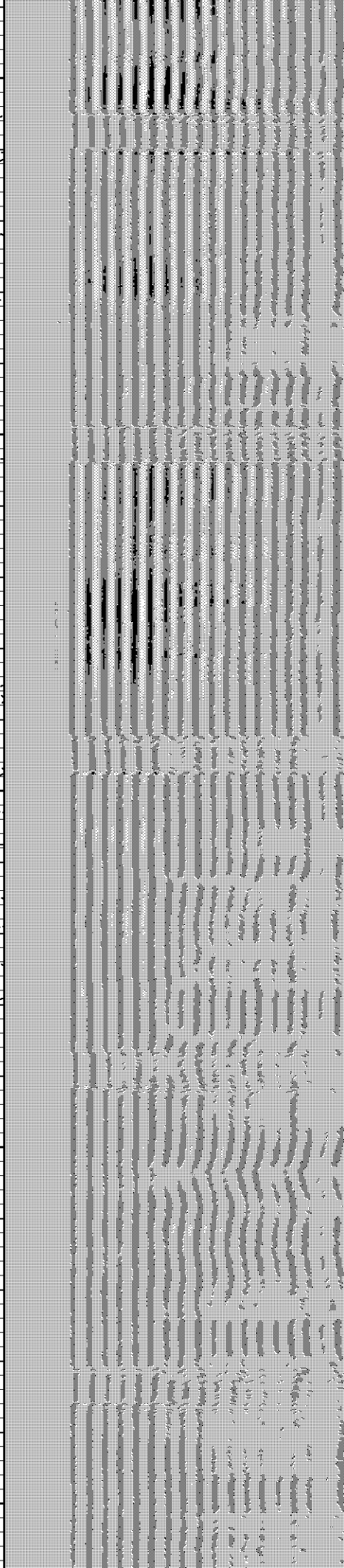
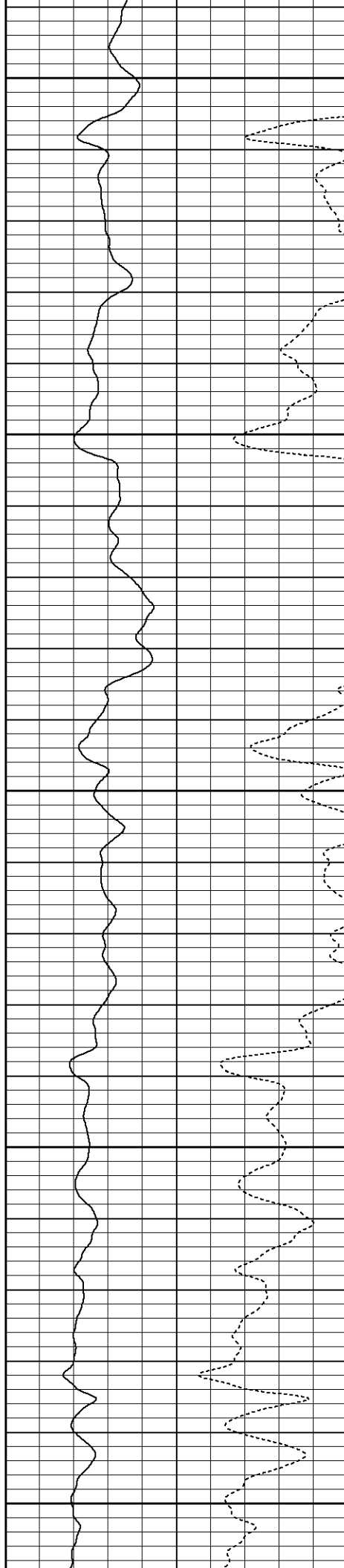
1550

1600

1650

1700

1750



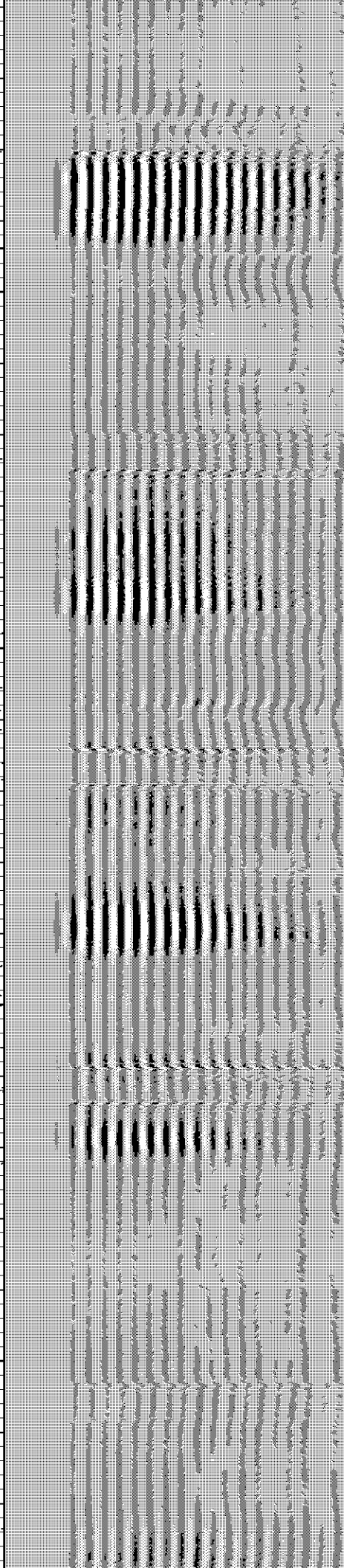
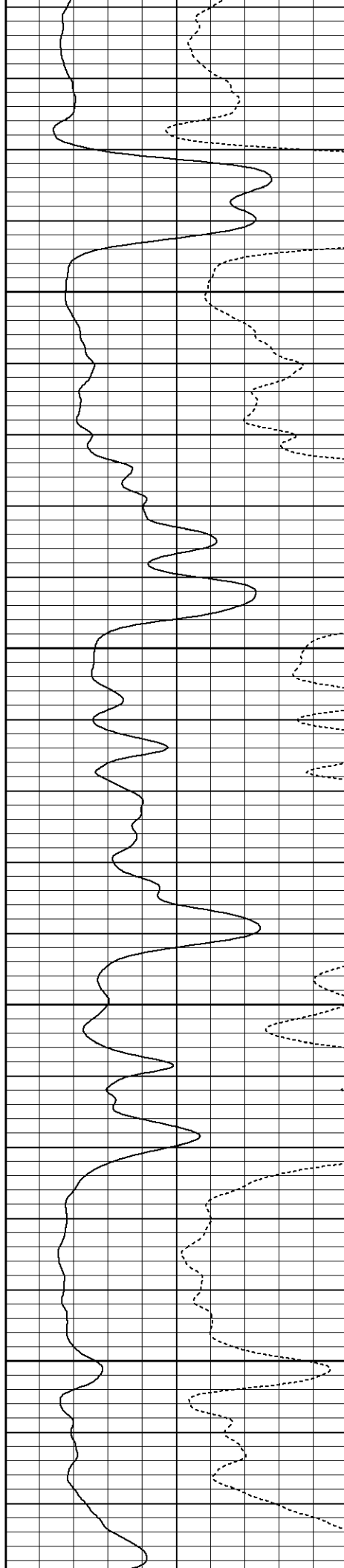


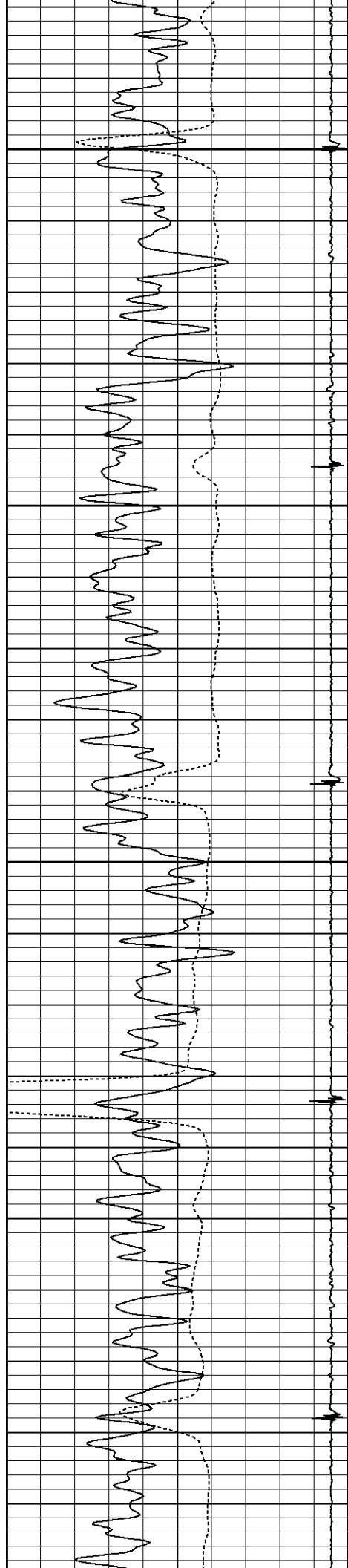
1800

1850

1900

1950



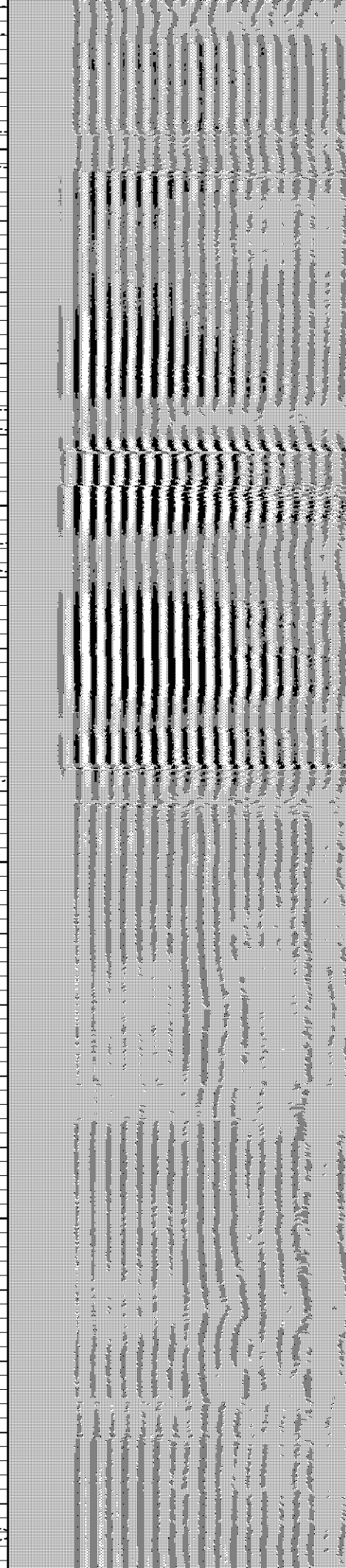
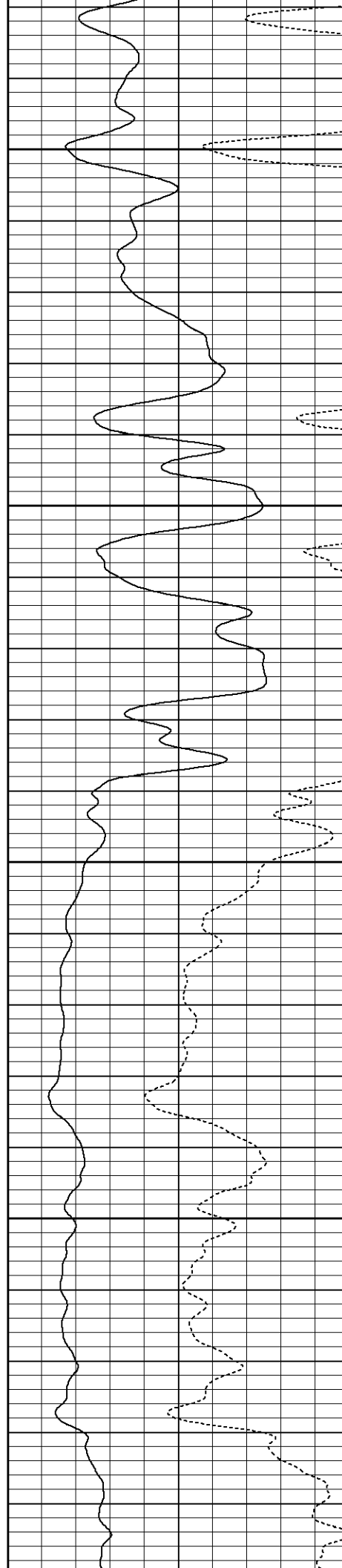


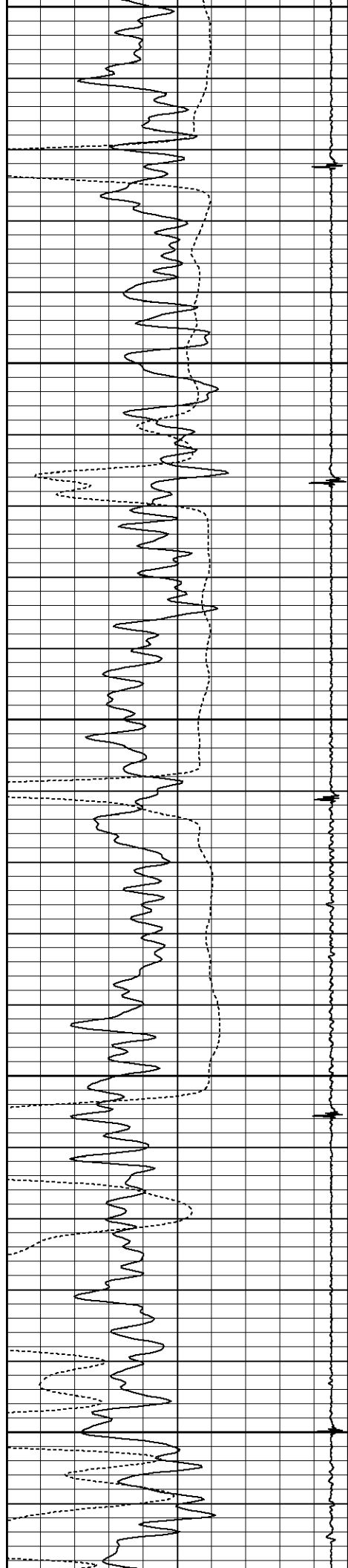
2000

2050

2100

2150





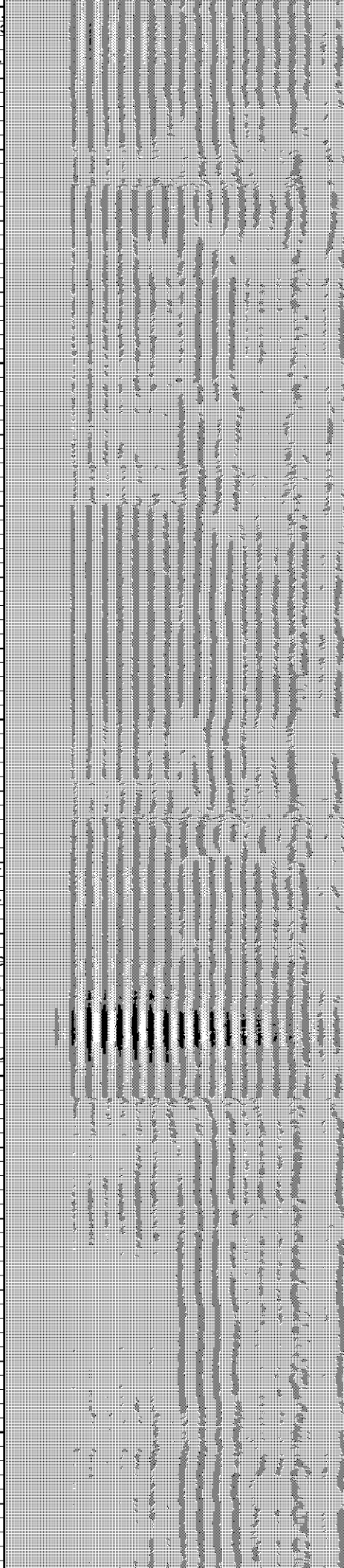
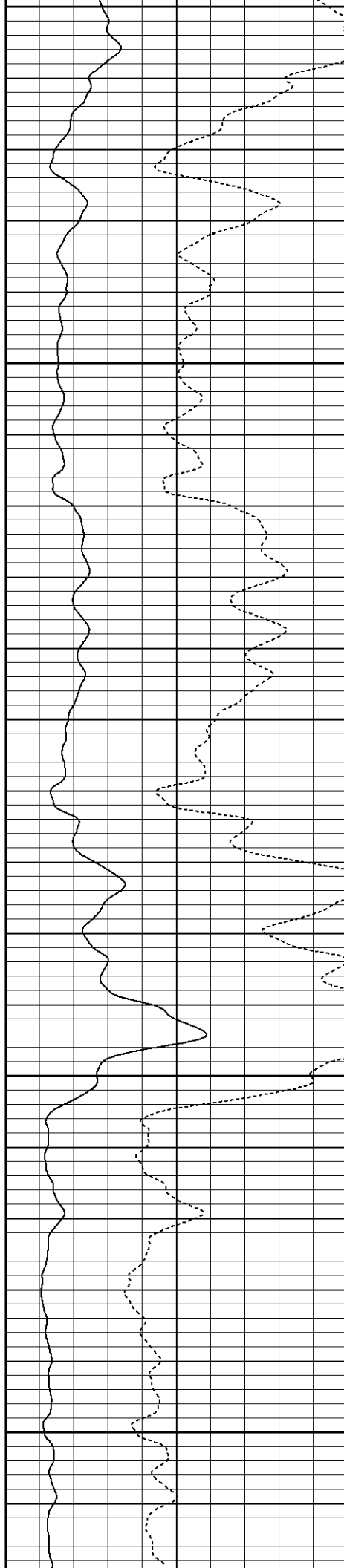
2200

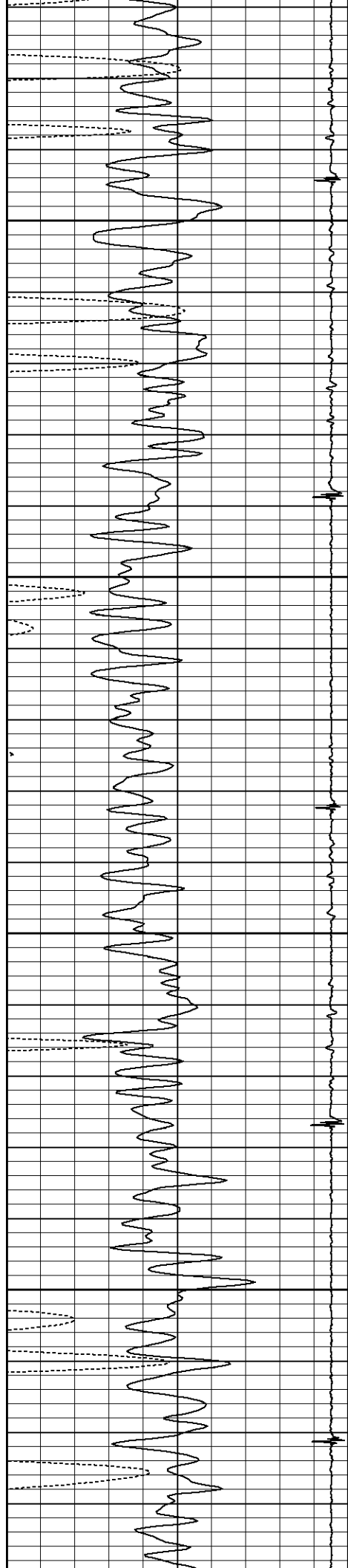
2250

2300

2350

2400



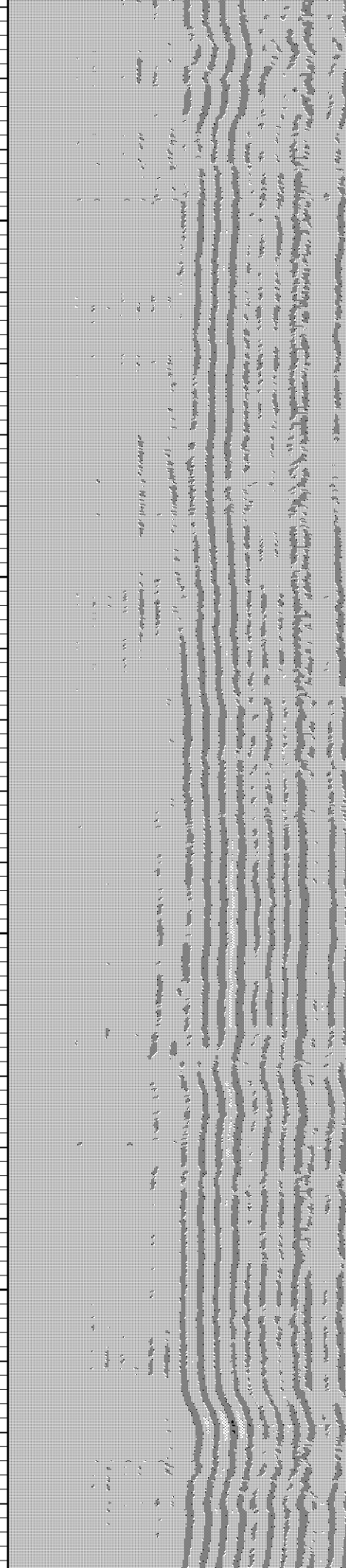
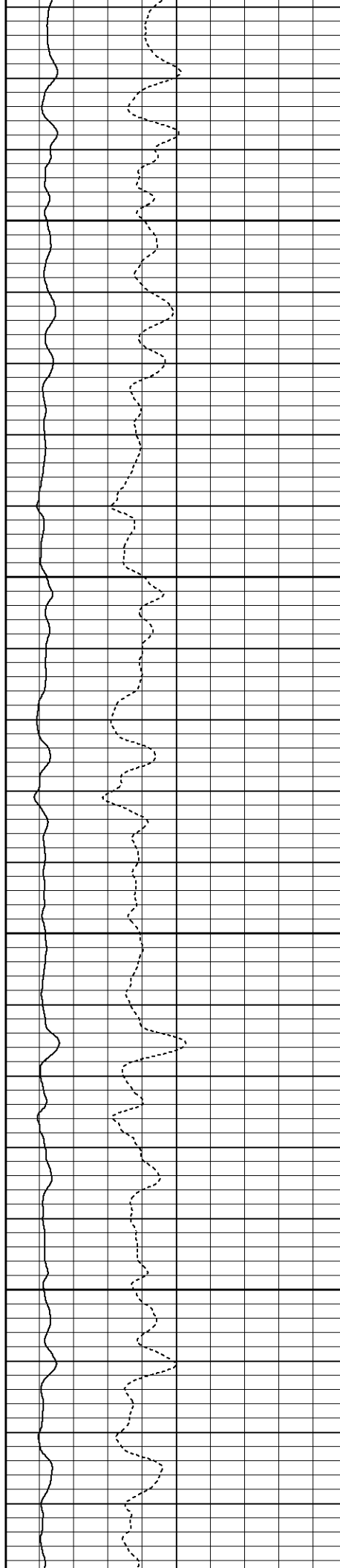


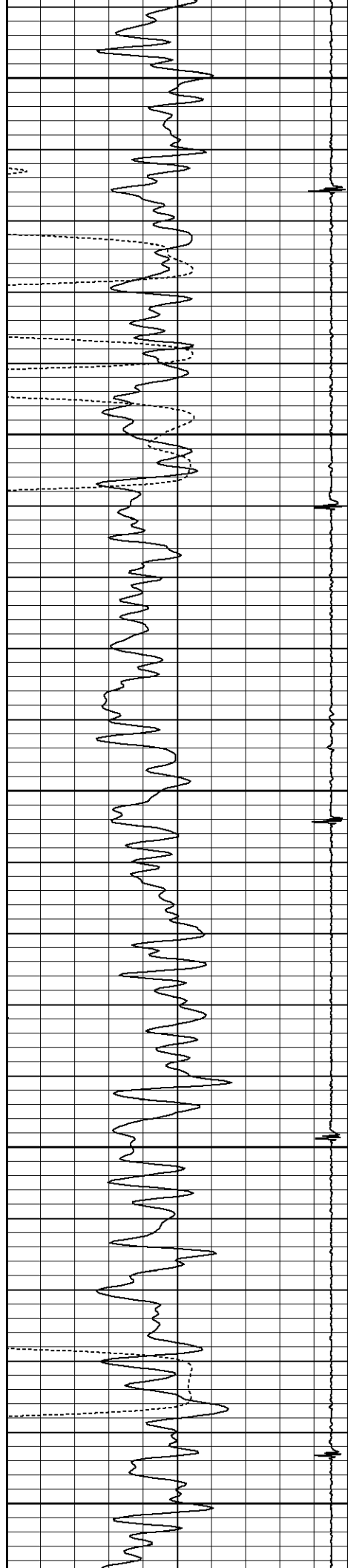
2450

2500

2550

2600





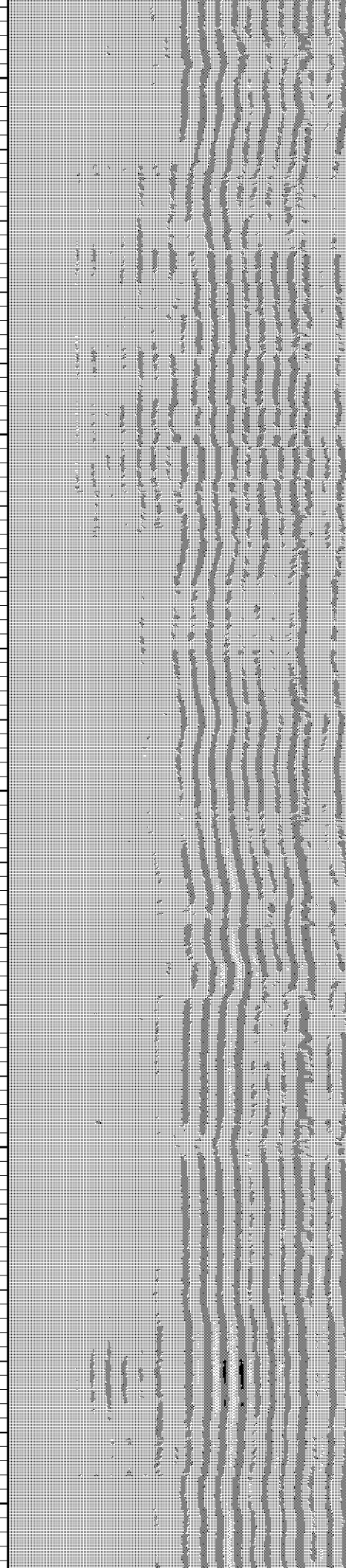
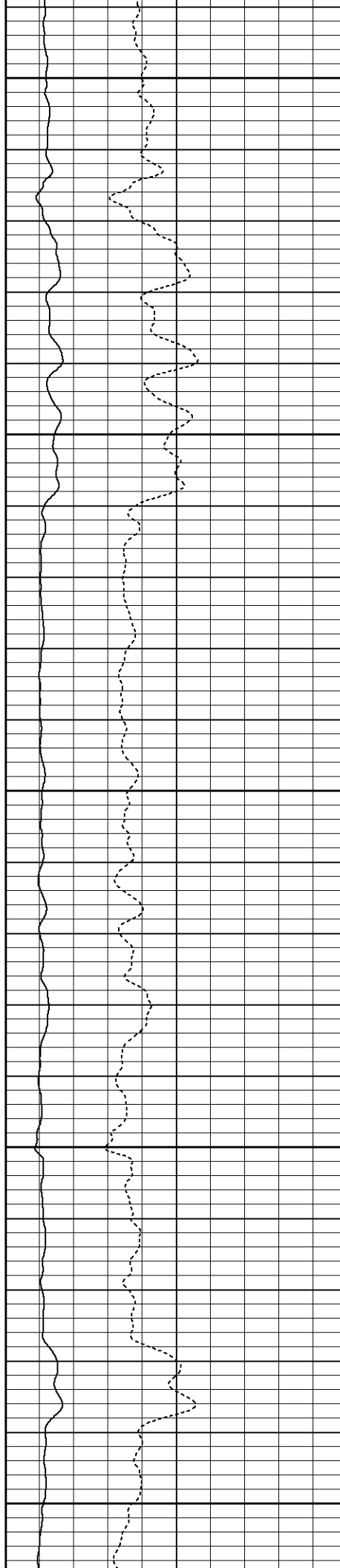
2650

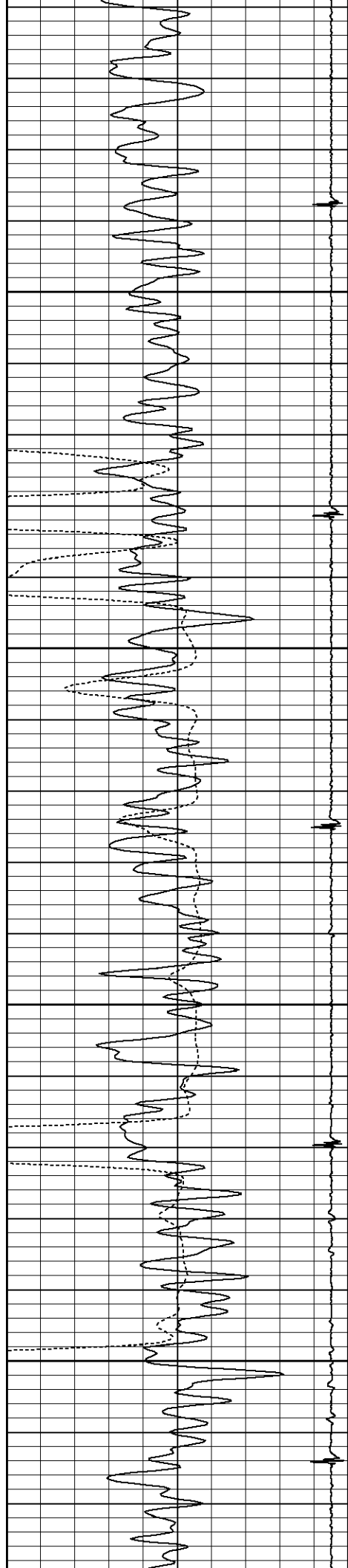
2700

2750

2800

2850



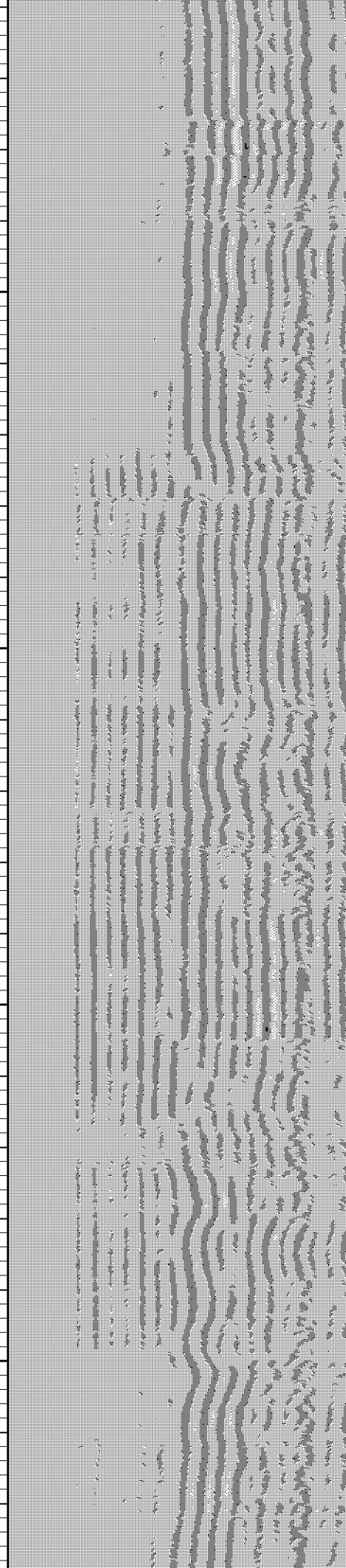
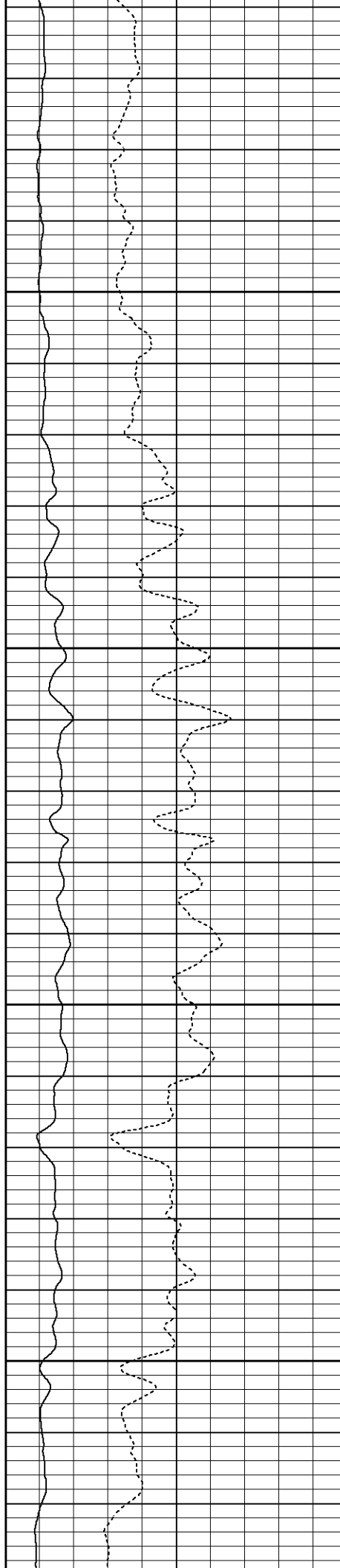


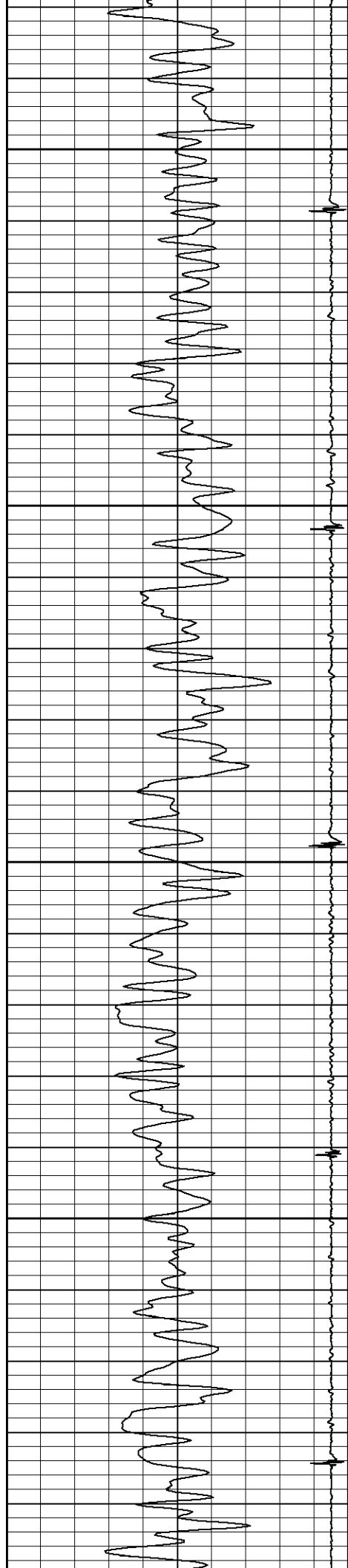
2900

2950

3000

3050



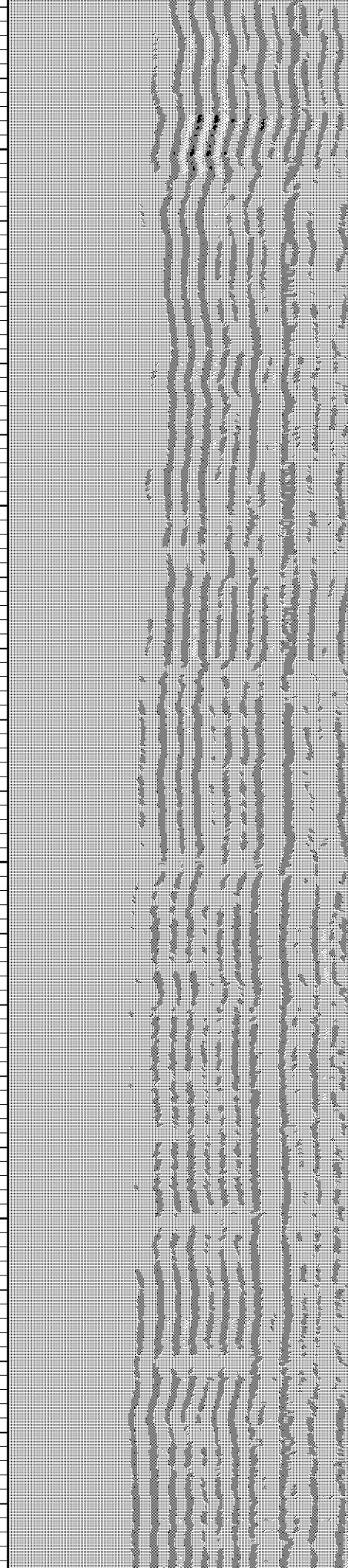
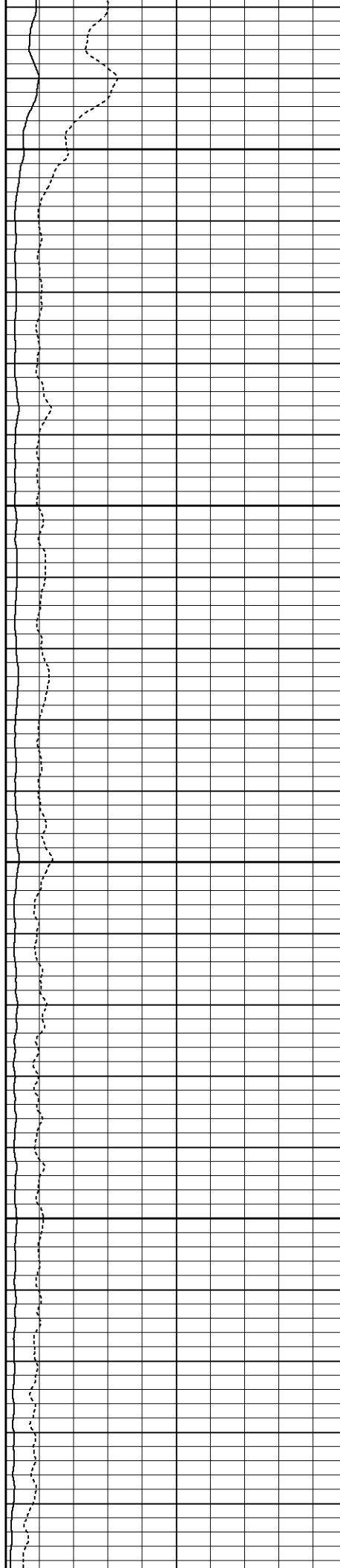


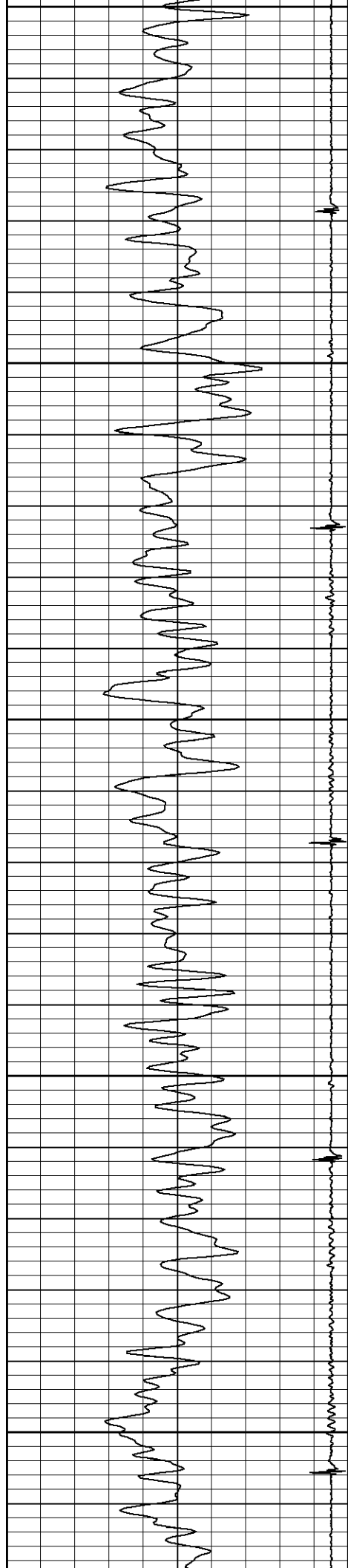
3100

3150

3200

3250





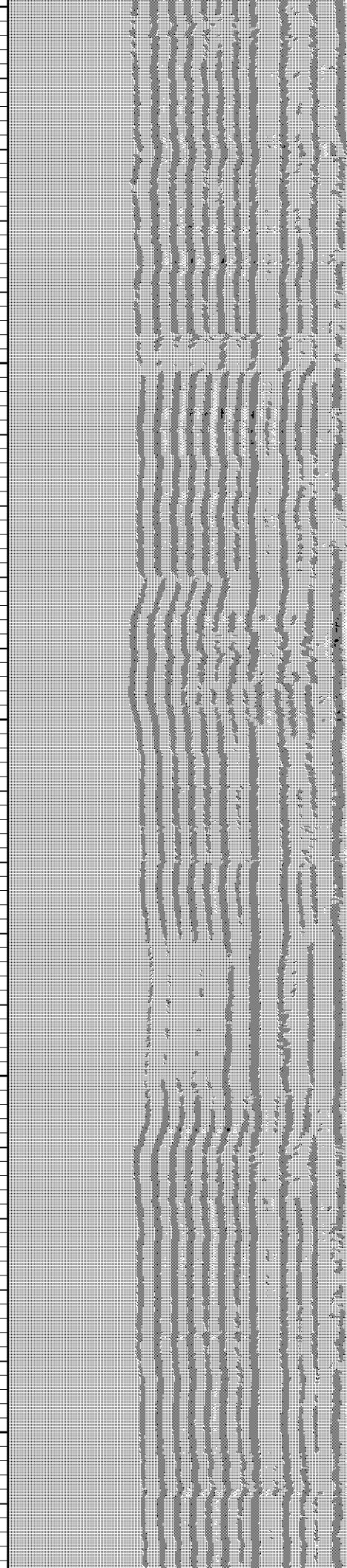
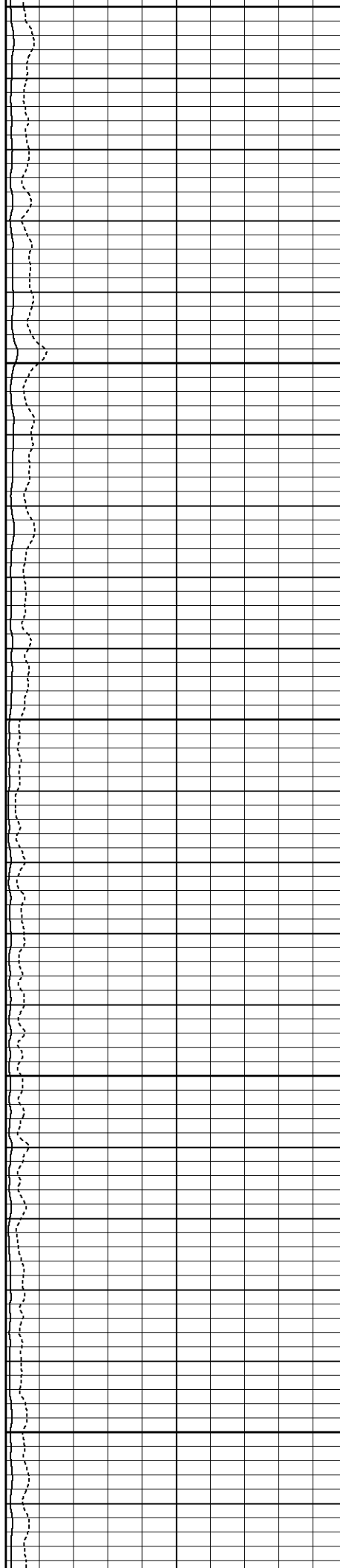
3300

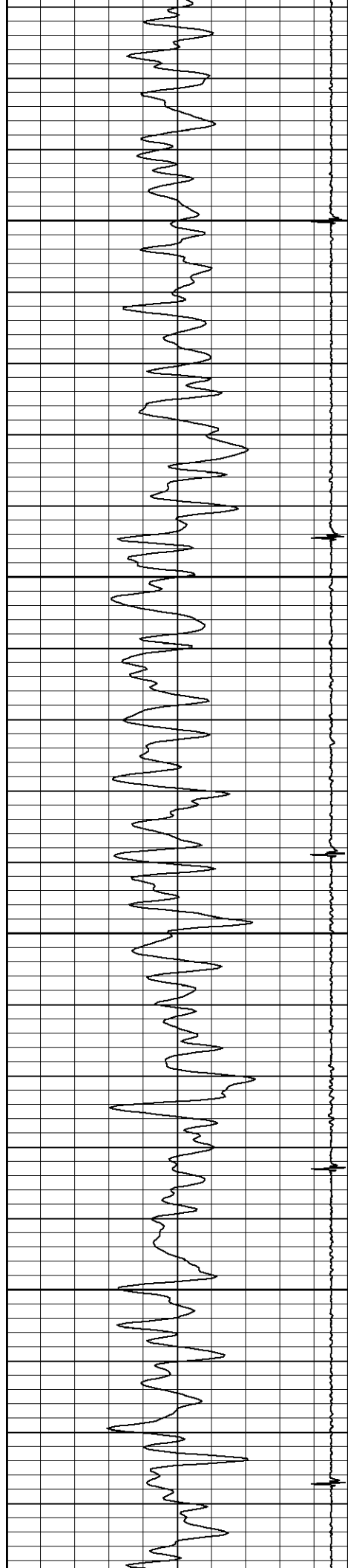
3350

3400

3450

3500



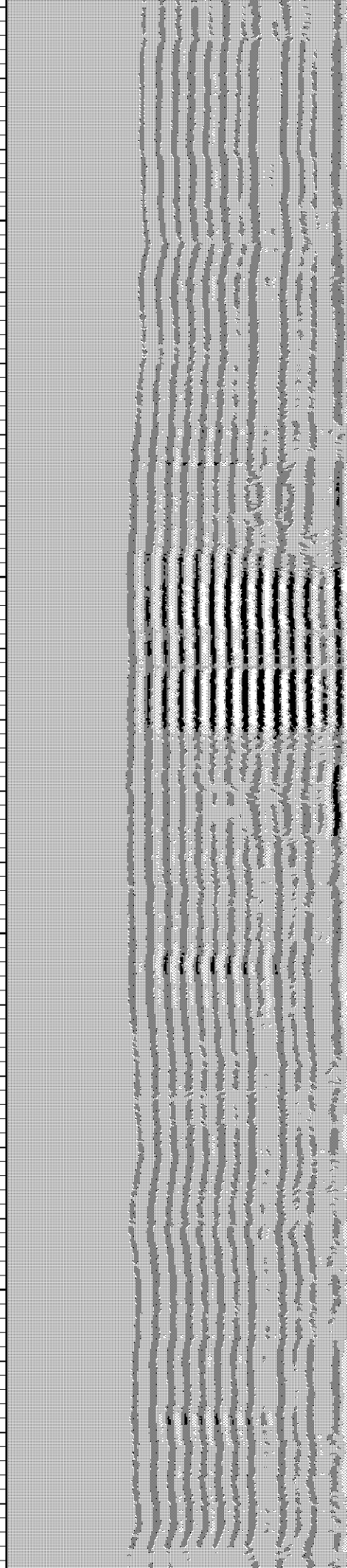
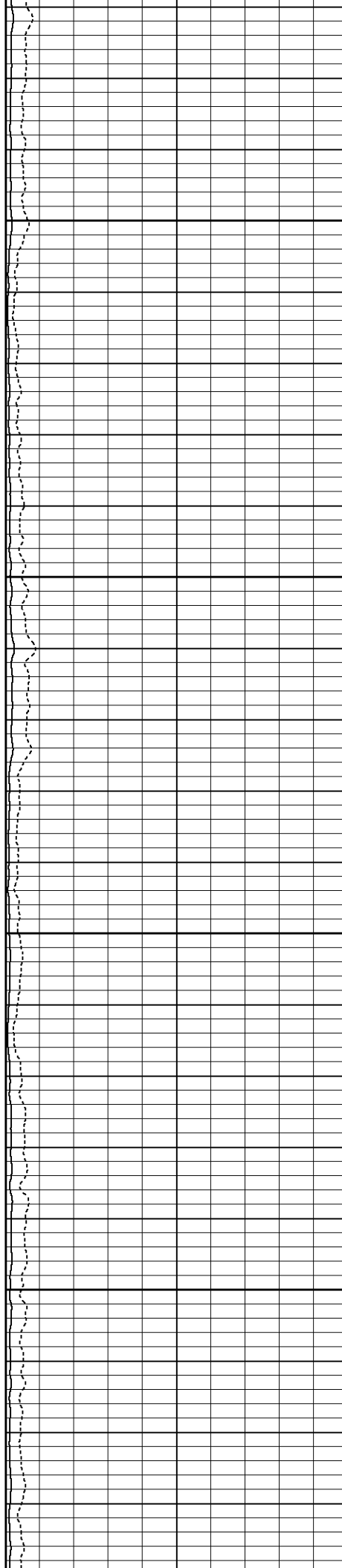


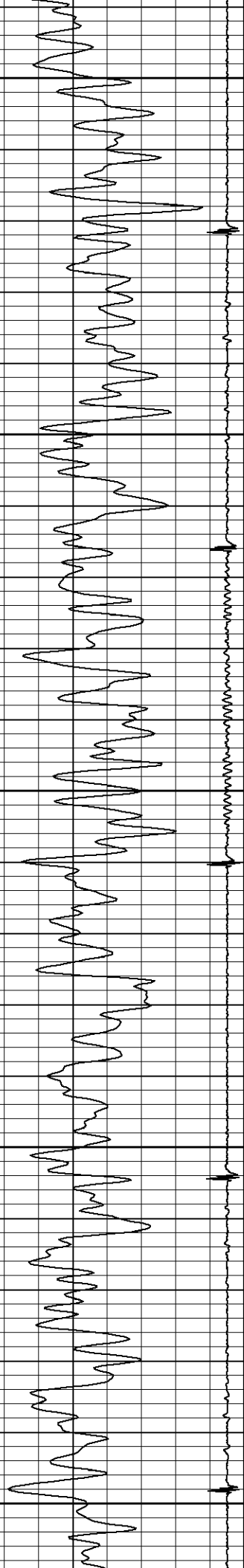
3550

3600

3650

3700





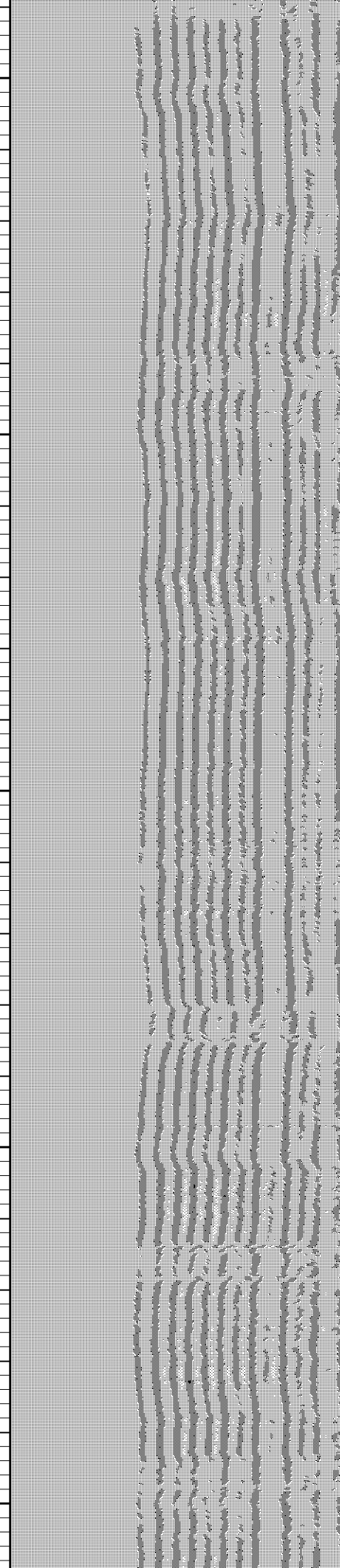
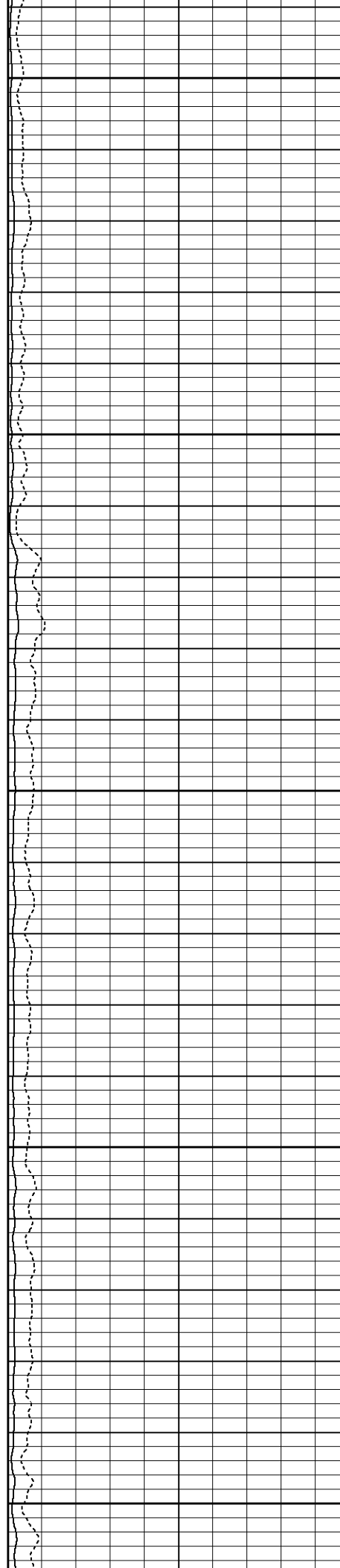
3750

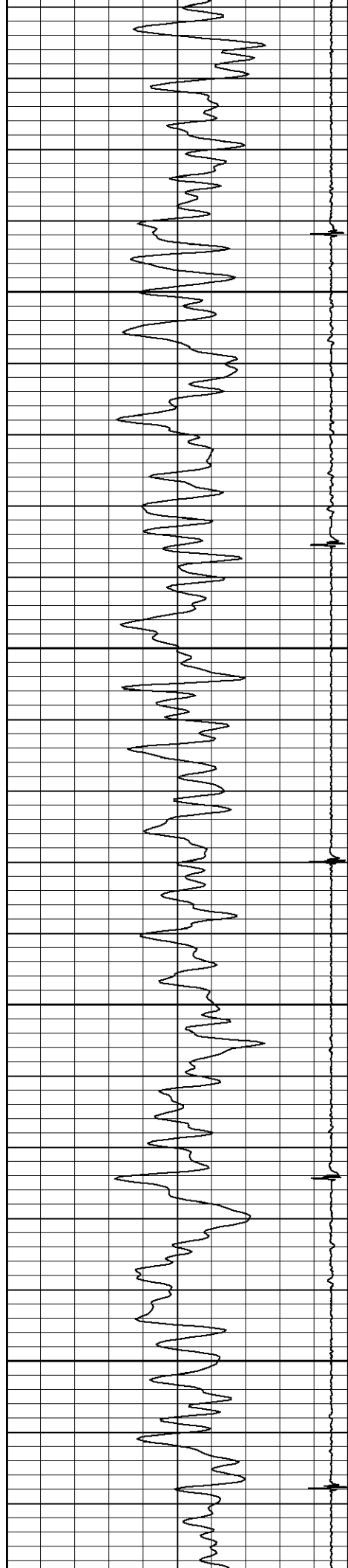
3800

3850

3900

3950



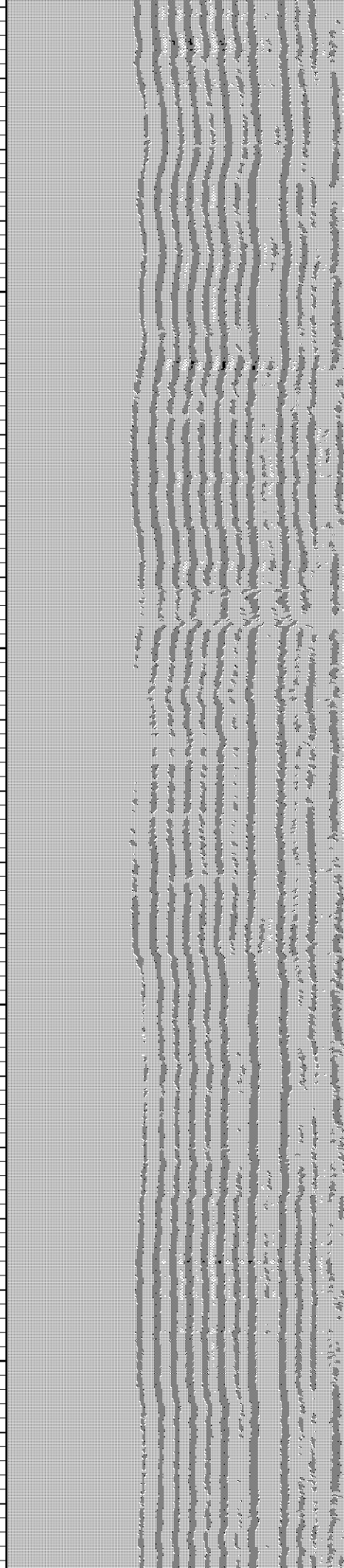
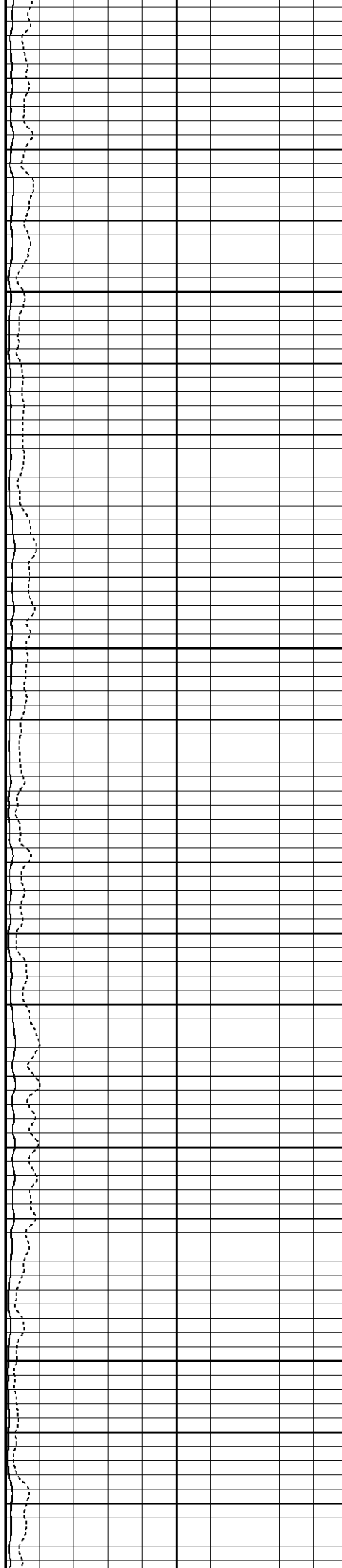


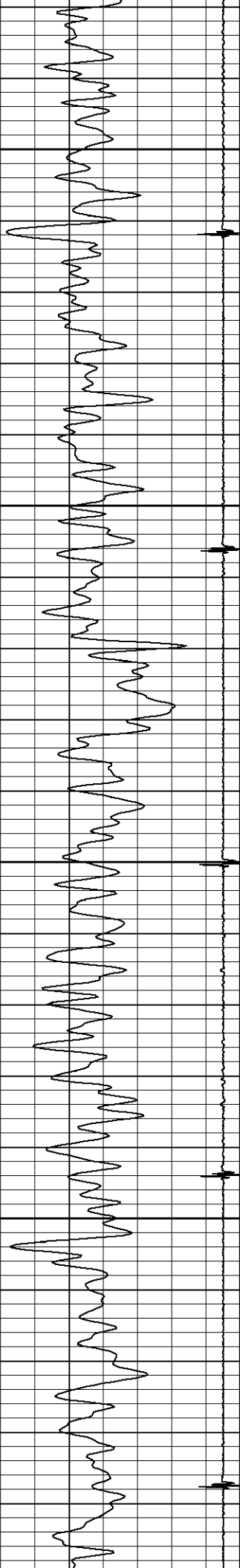
4000

4050

4100

4150



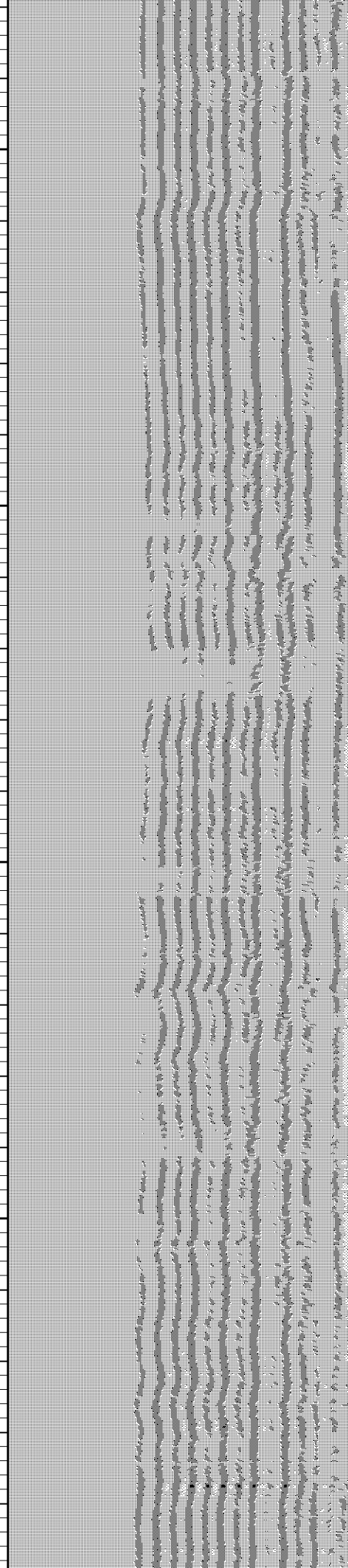
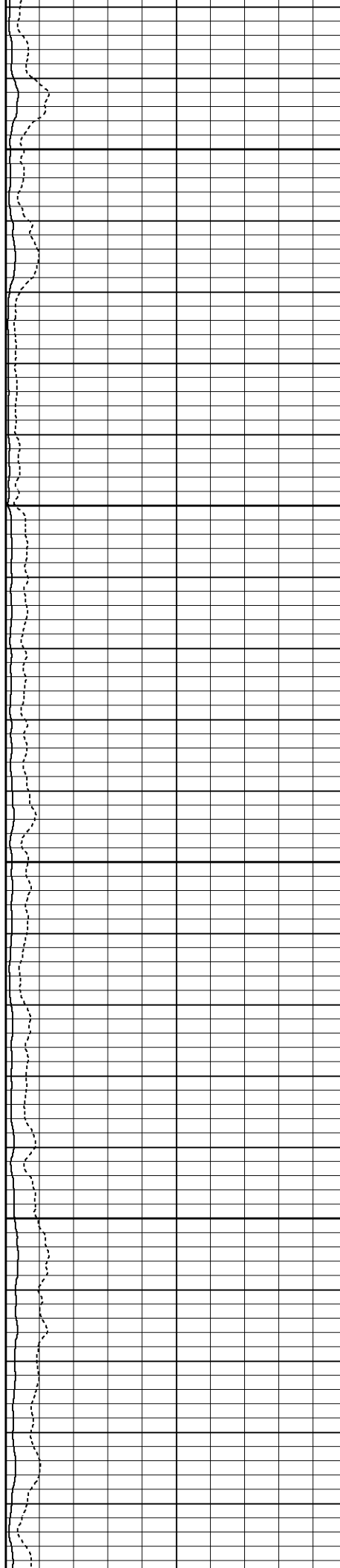


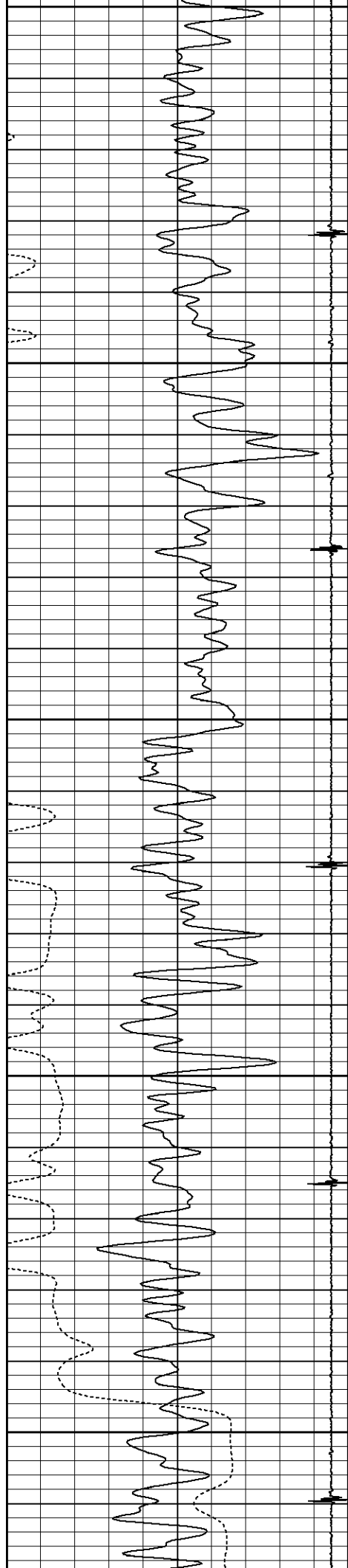
4200

4250

4300

4350





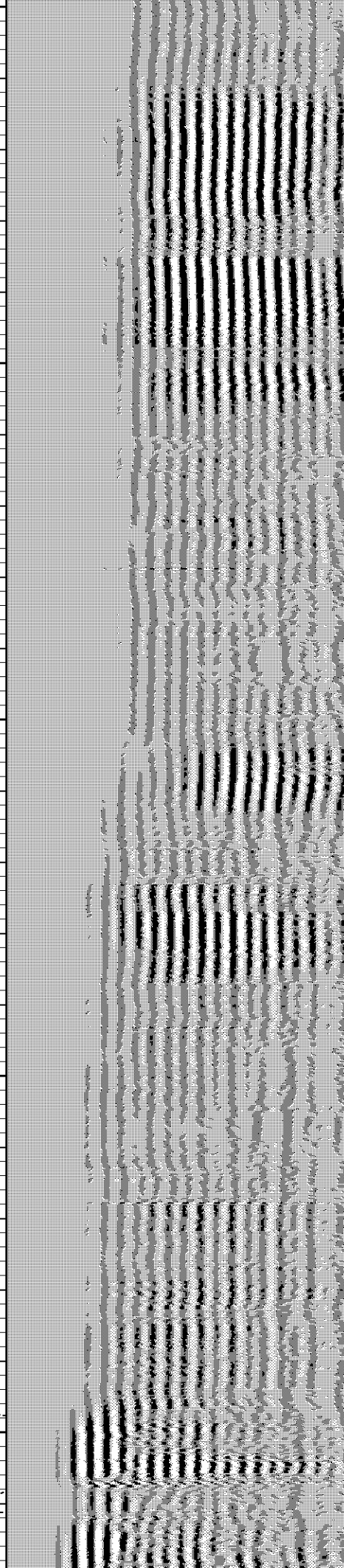
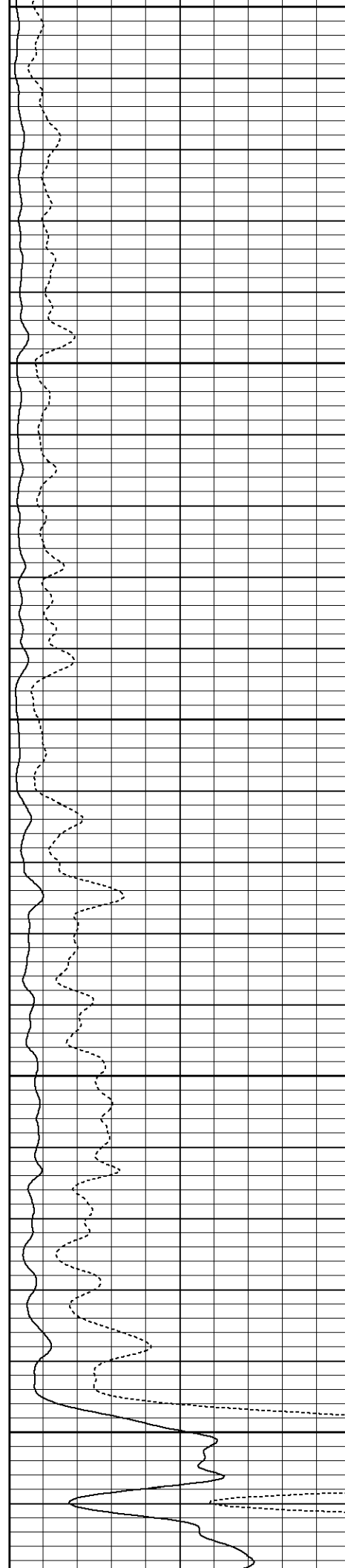
4400

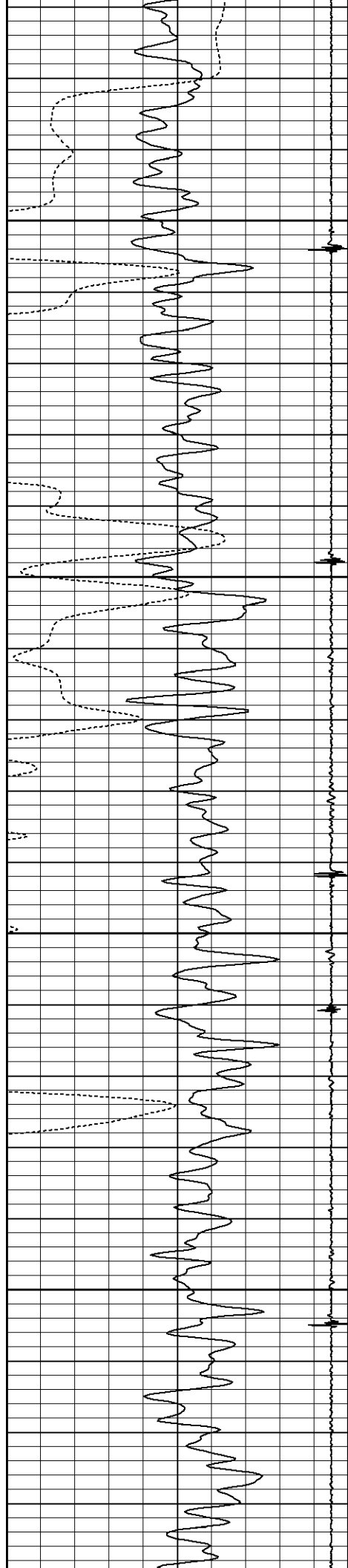
4450

4500

4550

4600





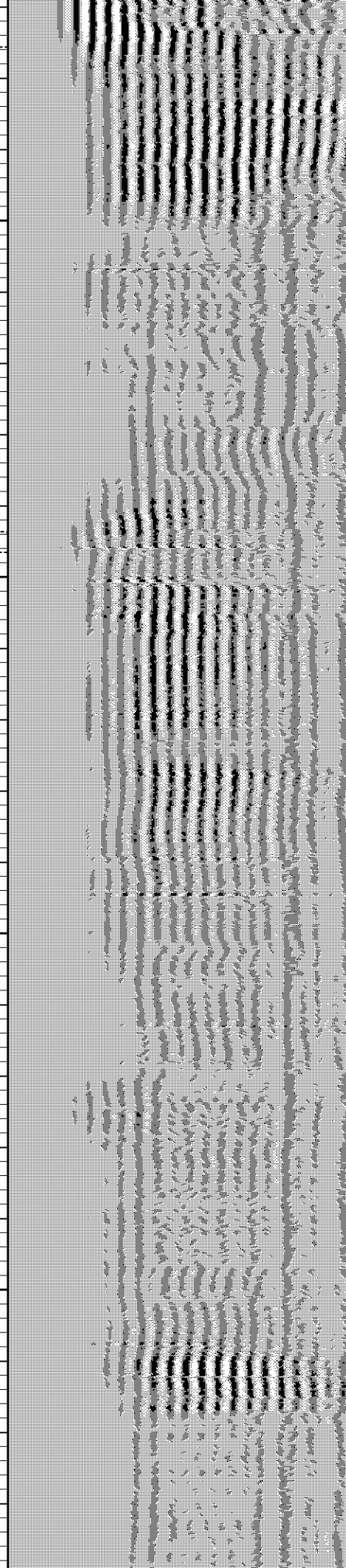
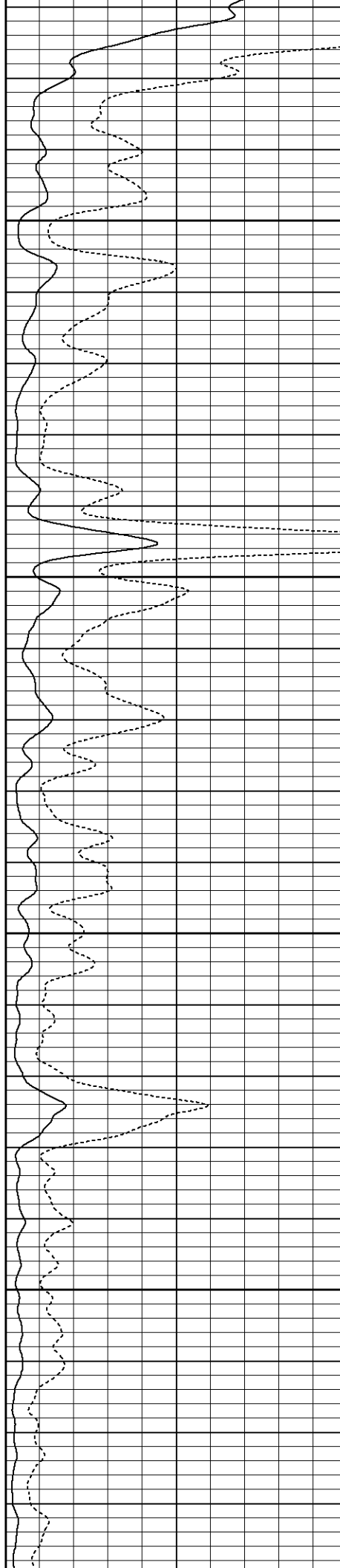
4650

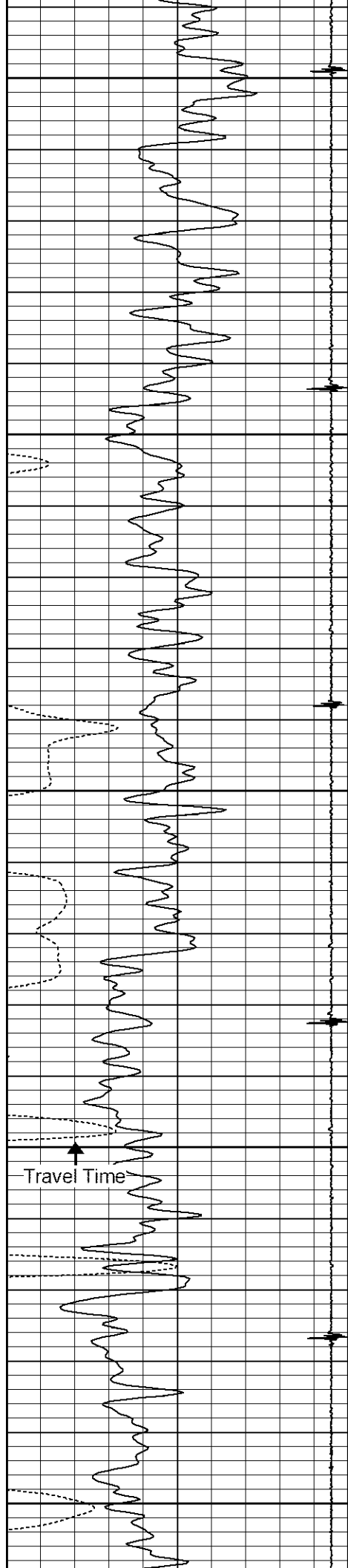
4700

Flag Joint

4750

4800





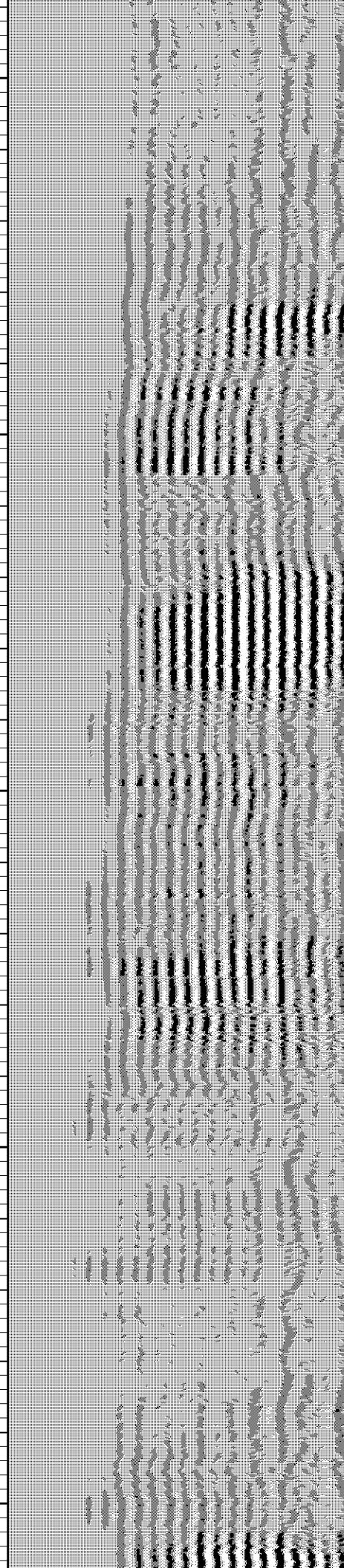
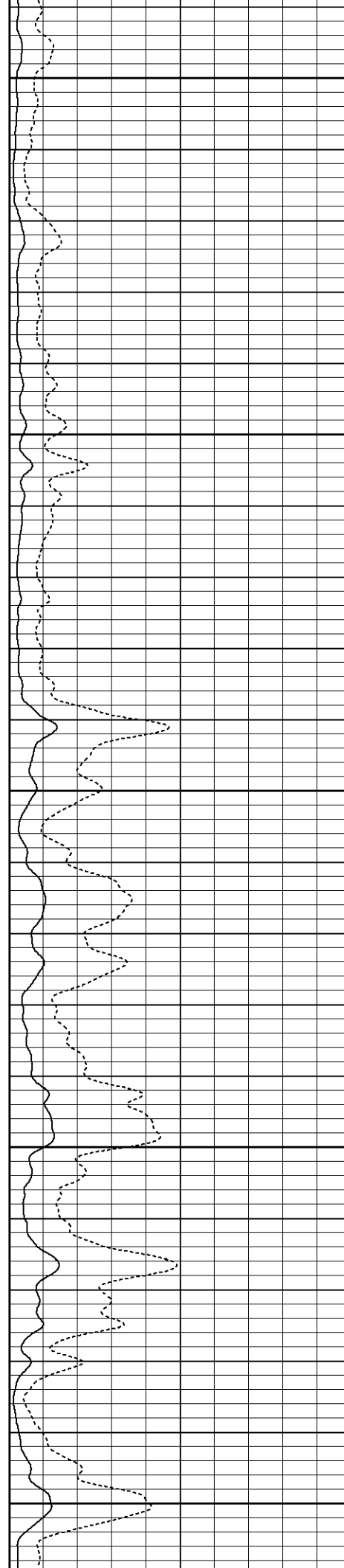
4850

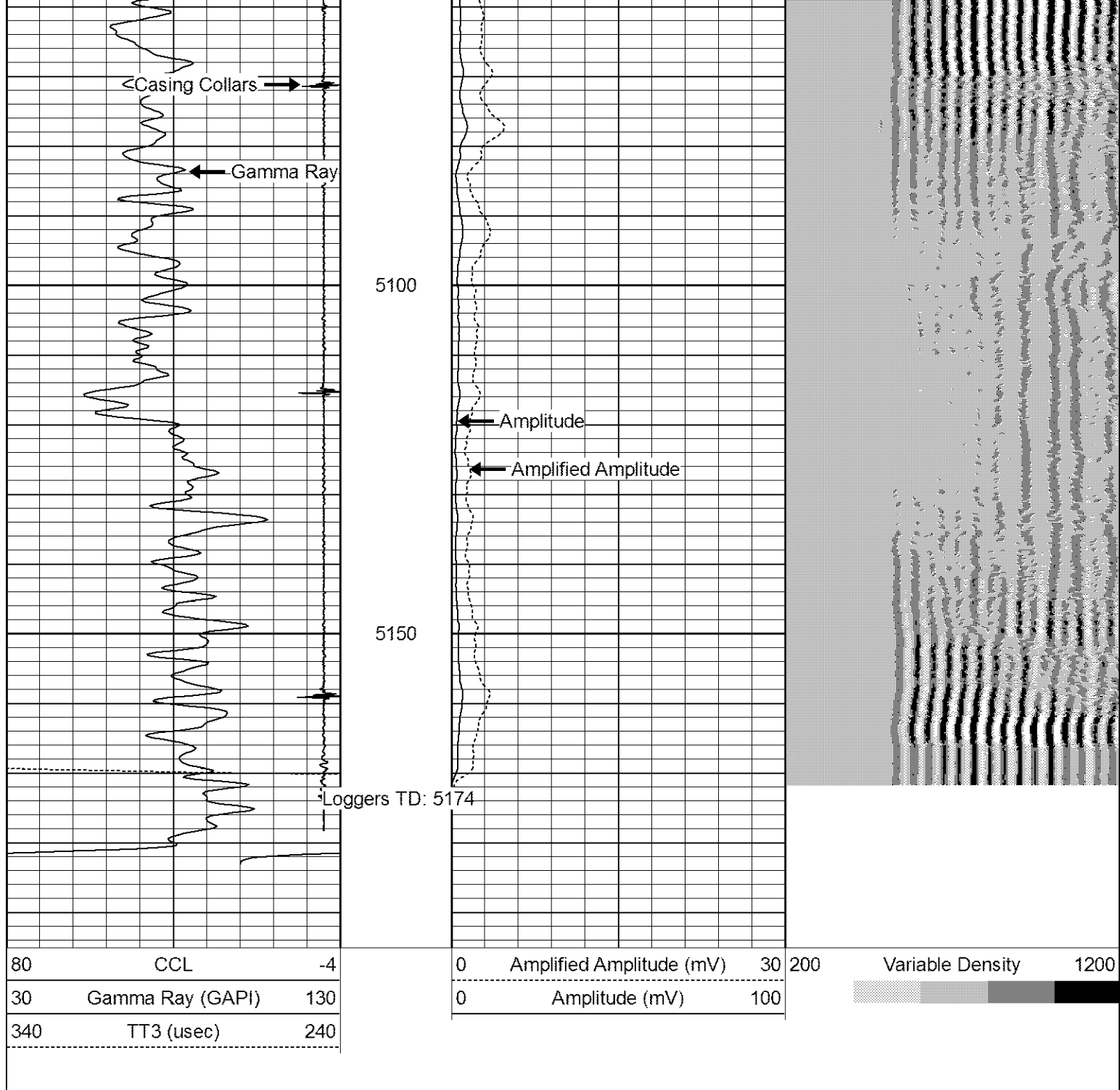
4900

4950

5000

5050





Calibration Report

Database File: cblzarlengo 6-4.db
 Dataset Pathname: pass2
 Dataset Creation: Tue Mar 20 07:45:49 2012 by Log SCH 111116

Gamma Ray Calibration Report

Type / Serial: Probe275dig / 101010

SHOP CALIBRATION

Tue Mar 20 08:20:14 2012

	Counts/Sec.	Gain	Offset	Jig	Units
Background	0.0				cps
Calibrator	1.0				cps
		0.7000			GAPI/cps

PRIMARY VERIFICATION

Background	0.0		cps
Calibrator	0.0		cps
Difference		0.0	GAPI

BEFORE SURVEY VERIFICATION

Background	0.0		cps
Calibrator	0.0		cps
Difference		0.0	GAPI

AFTER SURVEY VERIFICATION

Background	0.0		cps
Calibrator	0.0		cps
Difference		0.0	GAPI

Cement Bond Log Calibration Report

Serial Number:	110802		
Tool Model:	Probe275Digital		
Performed:	Sat Mar 17 13:22:32 2012		
Depth:	246.458	ft	
Casing Diameter:	4.5	in	
	3' Spacing	5' Spacing	
Signal Zero:	0.7	0	mV
Calibrated Amplitude:	81.1961	81.1961	mV
Reading at Signal Zero:	0.0137451	0.013623	V
Reading in Free Pipe:	2.49871	2.38418	V
Gain:	32.3933	34.2519	
Offset:	0.25475	-0.466615	