

R
90
W

R
89
W

T7N, R89W, 6th P.M.

S89°51'W – 2547.60' (G.L.O.)

Target Bottom Hole

N89°26'25"E – 2653.86' (Meas.)

1908 GLO Brass
Cap, 1.0' High,
Fence Corner
Lat: 40.585606°
Long: 107.419672°

1908 GLO 2 1/2" Brass
Cap, 0.6' High, Fence
Corner
Lat: 40.585661°
Long: 107.410119°

N00°02'W – 2640.00' (G.L.O.)

N00°14'31"W – 2638.55' (Meas.)

1908 GLO Brass
Cap, 1.1' High,
Fence Corner
Lat: 40.578314°
Long: 107.428819°

N22°46'57"E
10424.58'

NOTE:
SEE ADDENDUM TO LEGAL PLAT FOR
EXISTING IMPROVEMENTS WITHIN 400'
OF THE PROPOSED DISTURBANCE.

NOTE:
THE PROPOSED BOTTOM HOLE FOR THIS WELL
IS LOCATED IN THE NE 1/4 NE 1/4 OF SECTION
6, T7N, R89W, 6th P.M. AT A DISTANCE OF 600'
FNL 600' FEL. IT BEARS N22°46'57"E 10424.58'
FROM THE PROPOSED WELL HEAD.

S00°28'47"E – 2637.11' (Meas.)

S00°18'08"E – 2631.12' (Meas.)

1909 GLO Brass
Cap, 0.4' High,
Fence Corner
Lat: 40.578425°
Long: 107.410061°

1980 GLO Brass
Cap, 0.5' High,
E/W Fence,
Lat: 40.571206°
Long: 107.410031°

BULLDOG #7-14H-789

Elev. Ungraded Ground = 6854'

1908 GLO Brass
Cap, 1.0' High
Lat: 40.571072°
Long: 107.428797°

S89°10'44"W
2549.54' (Meas.)

1908 GLO Brass
Cap, 0.6' High,
E/W Fence
Lat: 40.571158°
Long: 107.419625°

S89°31'25"W – 2666.12' (Meas.)

PDOP = 1.4

LEGEND:

└─┘ = 90° SYMBOL

● = PROPOSED WELL HEAD.

▲ = SECTION CORNERS LOCATED.

NAD 83 (SURFACE LOCATION)	
LATITUDE	= 40°34'19.58" (40.572106)
LONGITUDE	= 107°25'35.62" (107.426561)
NAD 27 (SURFACE LOCATION)	
LATITUDE	= 40°34'19.68" (40.572133)
LONGITUDE	= 107°25'33.40" (107.425944)
STATE PLANE NAD 83	
N: 1457072.92	E: 2464837.09
STATE PLANE NAD 27	
N: 457071.69	E: 1464994.67

AXIA ENERGY

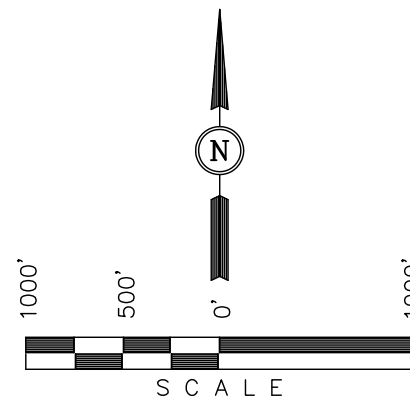
Well location, BULLDOG #7-14H-789 (SURFACE LOCATION), located as shown in the SW 1/4 SW 1/4 of Section 7, T7N, R89W, 6th P.M., Moffat County, Colorado.

BASIS OF ELEVATION

SPOT ELEVATION LOCATED AT THE SOUTHWEST CORNER OF SECTION 15, T7N, R91W, 6th P.M. TAKEN FROM THE CRAIG QUADRANGLE, COLORADO, MOFFAT COUNTY, 7.5 MINUTE QUAD (TOPOGRAPHIC MAP) PUBLISHED BY THE UNITED STATES DEPARTMENT OF THE INTERIOR, GEOLOGICAL SURVEY. SAID ELEVATION IS MARKED AS BEING 6672 FEET.

BASIS OF BEARINGS

BASIS OF BEARINGS IS A G.P.S. OBSERVATION.



CERTIFICATE

THIS IS TO CERTIFY THAT THE ABOVE PLAT WAS PREPARED FROM FIELD NOTES OF ACTUAL SURVEYS MADE BY ME OR UNDER MY SUPERVISION AND THAT THE SAME ARE TRUE AND CORRECT TO THE BEST OF MY KNOWLEDGE AND BELIEF.

REGISTERED LAND SURVEYOR
REGISTRATION NO. 17492
STATE OF COLORADO

UINTAH ENGINEERING & LAND SURVEYING
85 SOUTH 200 EAST – VERNAL, UTAH 84078
(435) 789-1017

SCALE 1" = 1000'	DATE SURVEYED: 03-22-12	DATE DRAWN: 04-04-12
PARTY G.O. S.W. J.I.	REFERENCES G.L.O. PLAT	
WEATHER COOL	FILE AXIA ENERGY	

T7N, R89W, 6th P.M.

AXIA ENERGY

R
90
W
T8N
T7N

WEST - 2581.92' (G.L.O.)

N89°55'51"E - 2710.83' (Meas.)

2007 Private Alum.
Cap, RLS#14815,
0.3' High, Fence
Corner
Lat: 40.600106°
Long: 107.419519°

1908 GLO 3 1/2" Brass
Cap, 2.0' High,
Fence Corner
Lat: 40.600100°
Long: 107.409758°

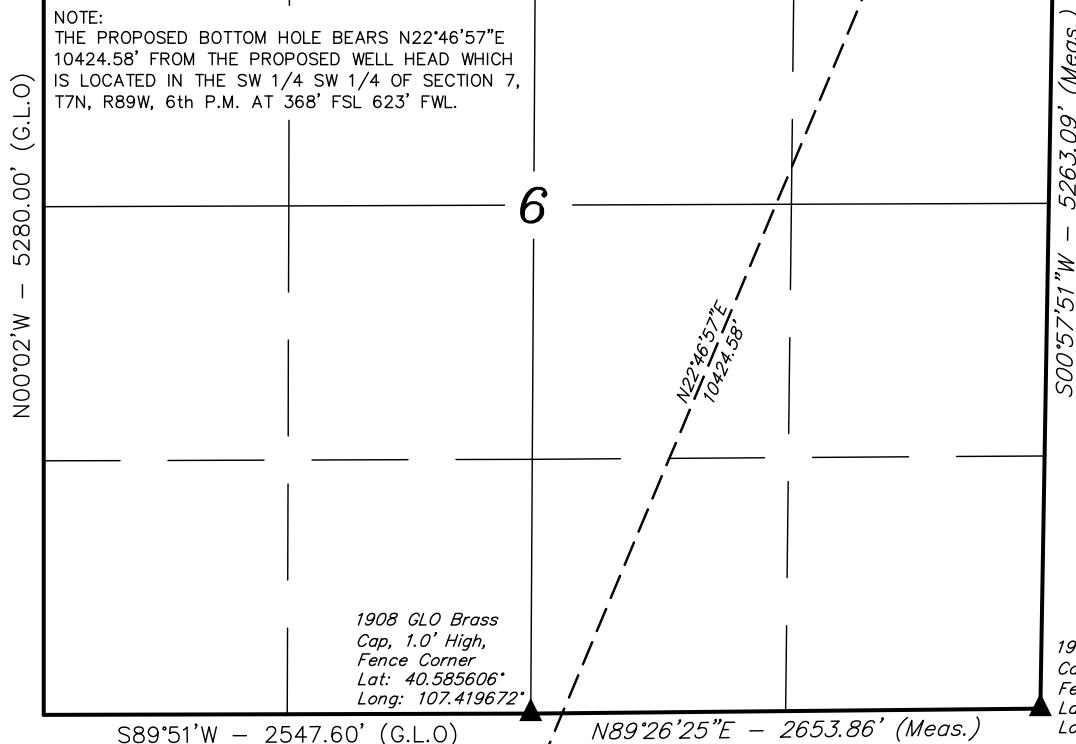
Well location, BULLDOG #7-14H-789 (TARGET
BOTTOM HOLE), located as shown in the NE 1/4
NE 1/4 of Section 6, T7N, R89W, 6th P.M.,
Moffat County, Colorado.

BASIS OF ELEVATION

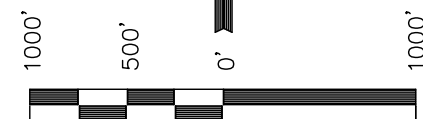
SPOT ELEVATION LOCATED AT THE SOUTHWEST CORNER OF
SECTION 15, T7N, R91W, 6th P.M. TAKEN FROM THE CRAIG
QUADRANGLE, COLORADO, MOFFAT COUNTY, 7.5 MINUTE QUAD
(TOPOGRAPHIC MAP) PUBLISHED BY THE UNITED STATES
DEPARTMENT OF THE INTERIOR, GEOLOGICAL SURVEY. SAID
ELEVATION IS MARKED AS BEING 6672 FEET.

BASIS OF BEARINGS

BASIS OF BEARINGS IS A G.P.S. OBSERVATION.



NOTE:
THE PROPOSED BOTTOM HOLE BEARS N22°46'57"E
10424.58' FROM THE PROPOSED WELL HEAD WHICH
IS LOCATED IN THE SW 1/4 SW 1/4 OF SECTION 7,
T7N, R89W, 6th P.M. AT 368' FSL 623' FWL.



SCALE

CERTIFICATE

THIS IS TO CERTIFY THAT THE ABOVE PLAT WAS PREPARED FROM
FIELD NOTES OF ACTUAL SURVEYS MADE BY ME OR UNDER MY
SUPERVISION AND THAT THE SAME ARE TRUE AND CORRECT TO THE
BEST OF MY KNOWLEDGE AND BELIEF.

REGISTERED LAND SURVEYOR
REGISTRATION NO. 17492
STATE OF COLORADO
04-17-12

BULLDOG #7-14H-789
Surface Location

LEGEND:

- └─┘ = 90° SYMBOL
- = PROPOSED WELL HEAD.
- ▲ = SECTION CORNERS LOCATED.

NAD 83 (TARGET BOTTOM HOLE)	
LATITUDE	= 40°35'54.44" (40.598456)
LONGITUDE	= 107°24'43.06" (107.411961)
NAD 27 (TARGET BOTTOM HOLE)	
LATITUDE	= 40°35'54.54" (40.598483)
LONGITUDE	= 107°24'40.84" (107.411344)
STATE PLANE NAD 83	
N: 1466582.57	E: 2469099.03
STATE PLANE NAD 27	
N: 466581.27	E: 1469256.59

UINTAH ENGINEERING & LAND SURVEYING			
85 SOUTH 200 EAST - VERNAL, UTAH 84078			
(435) 789-1017			
SCALE 1" = 1000'		DATE SURVEYED: 03-22-12	DATE DRAWN: 04-04-12
PARTY G.O. S.W. J.I.		REFERENCES G.L.O. PLAT	
WEATHER COOL		FILE AXIA ENERGY	