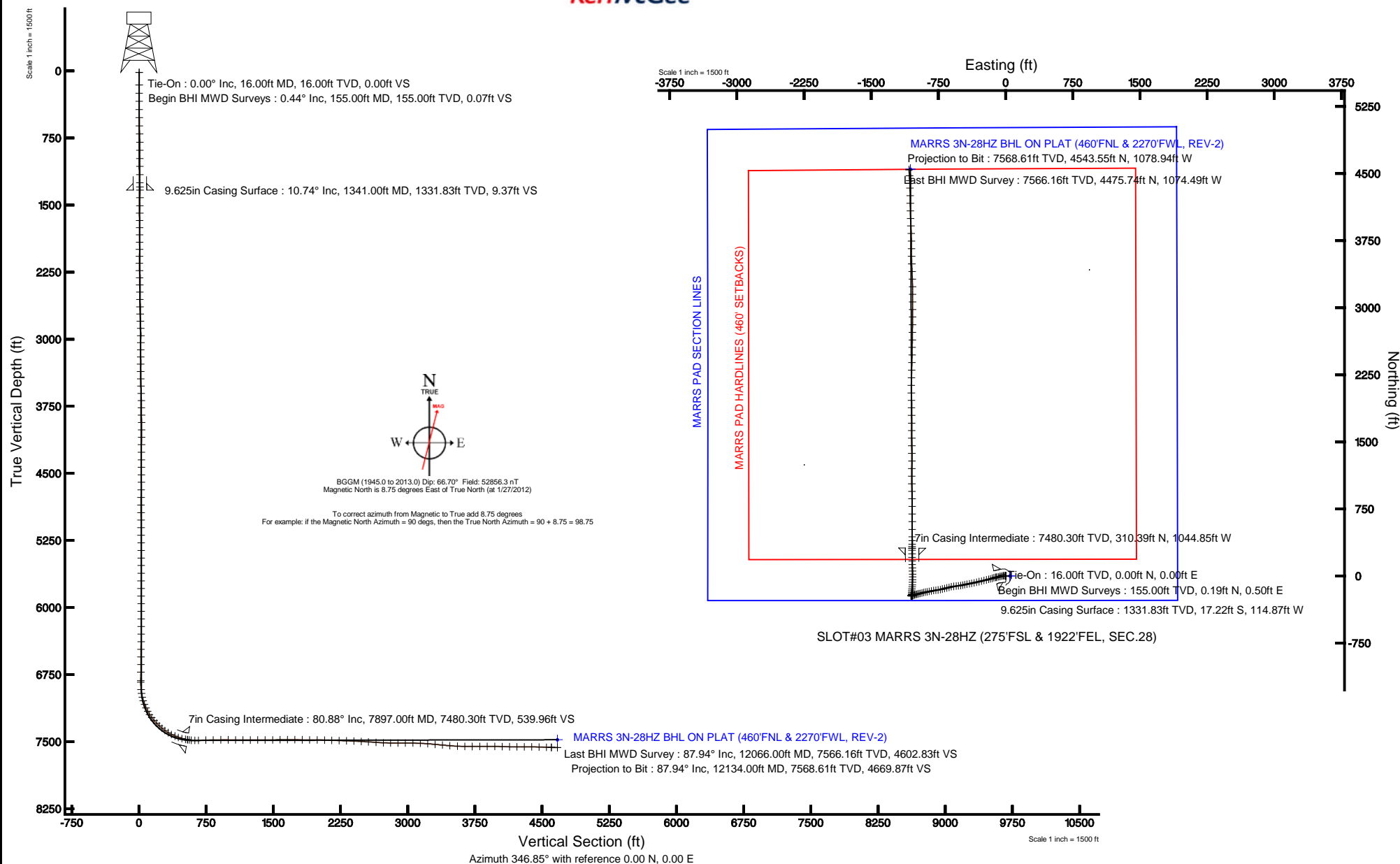


KERR-MCGEE OIL & GAS ONSHORE LP

Location: COLORADO Slot: SLOT#03 MARRS 3N-28HZ (275'FSL & 1922'FEL, SEC.28)
 Field: WELD COUNTY (KERR MCGEE) Well: MARRS 3N-28HZ
 Facility: SEC.28-T1N-R66W Wellbore: MARRS 3N-28HZ PWB

Plot reference wellpath is MARRS 3N-28HZ (REV-C.0) PWP	
True vertical depths are referenced to XTREME 6 (RKB)	Grid System: NAD83 / Lambert Colorado SP, Northern Zone (501), US feet
Measured depths are referenced to XTREME 6 (RKB)	North Reference: True north
XTREME 6 (RKB) to Mean Sea Level: 5121 feet	Scale: True distance
Mean Sea Level to Mud line (At Slot: SLOT#03 MARRS 3N-28HZ (275'FSL & 1922'FEL, SEC.28)): 0 feet	Depths are in feet
Coordinates are in feet referenced to Slot	Created by: wilsg02 on 3/12/2012





Actual Wellpath Report

MARRS 3N-28HZ AWP

Page 1 of 6



REFERENCE WELLPATH IDENTIFICATION			
Operator	KERR-MCGEE OIL & GAS ONSHORE LP	Slot	SLOT#03 MARRS 3N-28HZ (275'FSL & 1922'FEL, SEC.28)
Area	COLORADO	Well	MARRS 3N-28HZ
Field	WELD COUNTY (KERR MCGEE)	Wellbore	MARRS 3N-28HZ AWB
Facility	SEC.28-T1N-R66W		

REPORT SETUP INFORMATION			
Projection System	NAD83 / Lambert Colorado SP, Northern Zone (501), US feet	Software System	WellArchitect® 3.0.2
North Reference	True	User	Wilsjef02
Scale	0.999965	Report Generated	3/12/2012 at 12:46:09
Convergence at slot	0.47° East	Database/Source file	WellArchitectDB/MARRS_3N-28HZ_AWB.xml

WELLPATH LOCATION						
	Local coordinates		Grid coordinates		Geographic coordinates	
	North[ft]	East[ft]	Easting[US ft]	Northing[US ft]	Latitude	Longitude
Slot Location	0.20	-48.08	3201784.60	1249388.88	40°00'56.552"N	104°46'46.423"W
Facility Reference Pt			3201832.68	1249389.06	40°00'56.550"N	104°46'45.805"W
Field Reference Pt			3197771.84	1268891.29	40°04'09.600"N	104°47'36.000"W

WELLPATH DATUM			
Calculation method	Minimum curvature	XTREME 6 (RKB) to Facility Vertical Datum	5121.00ft
Horizontal Reference Pt	Slot	XTREME 6 (RKB) to Mean Sea Level	5121.00ft
Vertical Reference Pt	XTREME 6 (RKB)	XTREME 6 (RKB) to Mud Line at Slot (SLOT#03 MARRS 3N-28HZ (275'FSL & 1922'FEL, SEC.28))	5121.00ft
MD Reference Pt	XTREME 6 (RKB)	Section Origin	N 0.00, E 0.00 ft
Field Vertical Reference	Mean Sea Level	Section Azimuth	346.85°



Actual Wellpath Report

MARRS 3N-28HZ AWP

Page 2 of 6



REFERENCE WELLPATH IDENTIFICATION			
Operator	KERR-MCGEE OIL & GAS ONSHORE LP	Slot	SLOT#03 MARRS 3N-28HZ (275'FSL & 1922'FEL, SEC.28)
Area	COLORADO	Well	MARRS 3N-28HZ
Field	WELD COUNTY (KERR MCGEE)	Wellbore	MARRS 3N-28HZ AWB
Facility	SEC.28-T1N-R66W		

WELLPATH DATA (157 stations) † = interpolated/extrapolated station										
MD [ft]	Inclination [°]	Azimuth [°]	TVD [ft]	Vert Sect [ft]	North [ft]	East [ft]	Latitude	Longitude	DLS [°/100ft]	Comments
0.00†	0.000	69.070	0.00	0.00	0.00	0.00	40°00'56.552"N	104°46'46.423"W	0.00	
16.00	0.000	69.070	16.00	0.00	0.00	0.00	40°00'56.552"N	104°46'46.423"W	0.00	Tie-On
155.00	0.440	69.070	155.00	0.07	0.19	0.50	40°00'56.554"N	104°46'46.417"W	0.32	Begin BHI MWD Surveys
248.00	0.380	64.230	248.00	0.19	0.45	1.11	40°00'56.556"N	104°46'46.409"W	0.07	
338.00	0.530	66.130	337.99	0.33	0.75	1.76	40°00'56.559"N	104°46'46.400"W	0.17	
430.00	0.410	288.080	429.99	0.58	1.02	1.84	40°00'56.562"N	104°46'46.399"W	0.96	
521.00	2.350	278.040	520.96	1.42	1.39	-0.32	40°00'56.566"N	104°46'46.427"W	2.14	
613.00	4.080	269.150	612.81	2.80	1.60	-5.46	40°00'56.568"N	104°46'46.493"W	1.95	
705.00	6.200	272.750	704.44	4.86	1.79	-13.70	40°00'56.570"N	104°46'46.599"W	2.33	
796.00	7.720	266.500	794.77	7.23	1.65	-24.71	40°00'56.568"N	104°46'46.741"W	1.86	
889.00	8.870	259.580	886.79	8.62	-0.02	-38.00	40°00'56.552"N	104°46'46.911"W	1.64	
981.00	8.890	254.320	977.69	8.65	-3.23	-51.82	40°00'56.520"N	104°46'47.089"W	0.88	
1072.00	10.350	256.690	1067.41	8.31	-7.01	-66.54	40°00'56.483"N	104°46'47.278"W	1.66	
1164.00	10.660	256.540	1157.87	8.24	-10.89	-82.86	40°00'56.444"N	104°46'47.488"W	0.34	
1256.00	10.720	259.650	1248.27	8.61	-14.41	-99.55	40°00'56.410"N	104°46'47.702"W	0.63	
1304.00	10.390	260.390	1295.46	9.10	-15.94	-108.21	40°00'56.395"N	104°46'47.814"W	0.74	
1428.00	11.630	252.550	1417.18	8.85	-21.55	-131.16	40°00'56.339"N	104°46'48.109"W	1.57	
1519.00	12.820	253.060	1506.12	7.50	-27.24	-149.57	40°00'56.283"N	104°46'48.345"W	1.31	
1604.00	14.400	254.630	1588.73	6.47	-32.79	-168.78	40°00'56.228"N	104°46'48.592"W	1.91	
1689.00	16.020	253.820	1670.75	5.44	-38.86	-190.24	40°00'56.168"N	104°46'48.868"W	1.92	
1774.00	17.770	257.640	1752.08	5.00	-44.91	-214.18	40°00'56.108"N	104°46'49.176"W	2.44	
1859.00	19.480	257.170	1832.63	5.25	-50.83	-240.67	40°00'56.050"N	104°46'49.516"W	2.02	
1945.00	19.740	255.660	1913.64	5.03	-57.61	-268.72	40°00'55.983"N	104°46'49.877"W	0.66	
2030.00	20.010	255.720	1993.57	4.45	-64.76	-296.72	40°00'55.912"N	104°46'50.237"W	0.32	
2113.00	19.540	255.590	2071.68	3.86	-71.71	-323.93	40°00'55.843"N	104°46'50.586"W	0.57	
2197.00	18.720	255.790	2151.04	3.30	-78.52	-350.60	40°00'55.776"N	104°46'50.929"W	0.98	
2282.00	19.850	260.370	2231.27	3.94	-84.28	-378.05	40°00'55.719"N	104°46'51.282"W	2.22	
2367.00	18.300	259.390	2311.60	5.42	-89.15	-405.40	40°00'55.671"N	104°46'51.633"W	1.86	
2452.00	17.460	259.220	2392.50	6.53	-94.00	-431.04	40°00'55.623"N	104°46'51.963"W	0.99	
2537.00	17.070	257.160	2473.67	7.13	-99.15	-455.73	40°00'55.572"N	104°46'52.280"W	0.85	
2622.00	16.230	257.970	2555.11	7.43	-104.40	-479.52	40°00'55.520"N	104°46'52.586"W	1.03	
2708.00	15.750	263.190	2637.78	8.95	-108.29	-502.86	40°00'55.482"N	104°46'52.886"W	1.76	
2791.00	17.010	263.010	2717.41	11.50	-111.10	-526.10	40°00'55.454"N	104°46'53.185"W	1.52	
2876.00	17.730	262.920	2798.53	14.20	-114.21	-551.28	40°00'55.423"N	104°46'53.508"W	0.85	
2961.00	19.470	265.060	2879.09	17.59	-117.03	-578.24	40°00'55.395"N	104°46'53.855"W	2.20	
3047.00	18.950	255.480	2960.32	19.31	-121.76	-606.05	40°00'55.349"N	104°46'54.212"W	3.71	
3130.00	18.570	256.100	3038.91	18.81	-128.32	-631.92	40°00'55.284"N	104°46'54.545"W	0.52	
3214.00	17.500	256.110	3118.79	18.47	-134.56	-657.17	40°00'55.222"N	104°46'54.869"W	1.27	
3297.00	17.080	255.110	3198.04	17.94	-140.69	-681.06	40°00'55.162"N	104°46'55.176"W	0.62	
3382.00	17.570	253.790	3279.18	16.88	-147.48	-705.44	40°00'55.094"N	104°46'55.490"W	0.74	
3467.00	17.100	260.120	3360.33	16.91	-153.21	-730.08	40°00'55.038"N	104°46'55.806"W	2.29	
3553.00	16.830	261.720	3442.58	18.69	-157.17	-754.85	40°00'54.999"N	104°46'56.125"W	0.63	
3638.00	17.030	263.600	3523.90	21.19	-160.33	-779.40	40°00'54.967"N	104°46'56.440"W	0.69	
3723.00	16.870	259.270	3605.21	23.18	-164.01	-803.89	40°00'54.931"N	104°46'56.755"W	1.50	
3807.00	17.280	260.930	3685.51	24.58	-168.25	-828.18	40°00'54.889"N	104°46'57.067"W	0.76	
3892.00	17.080	258.030	3766.72	25.74	-172.83	-852.86	40°00'54.844"N	104°46'57.384"W	1.03	
3978.00	15.600	258.450	3849.24	26.32	-177.76	-876.55	40°00'54.795"N	104°46'57.689"W	1.73	
4063.00	13.590	258.860	3931.50	26.99	-181.98	-897.55	40°00'54.753"N	104°46'57.959"W	2.37	
4148.00	12.750	257.310	4014.26	27.41	-185.97	-916.49	40°00'54.714"N	104°46'58.202"W	1.07	
4233.00	12.630	255.120	4097.18	27.21	-190.42	-934.63	40°00'54.670"N	104°46'58.435"W	0.58	
4318.00	11.520	253.490	4180.30	26.43	-195.22	-951.75	40°00'54.623"N	104°46'58.655"W	1.37	
4404.00	10.290	257.240	4264.75	25.98	-199.35	-967.47	40°00'54.582"N	104°46'58.857"W	1.65	
4489.00	8.910	255.350	4348.56	25.86	-202.69	-981.25	40°00'54.549"N	104°46'59.034"W	1.67	
4574.00	8.560	256.000	4432.57	25.59	-205.89	-993.75	40°00'54.517"N	104°46'59.195"W	0.43	
4659.00	8.500	256.080	4516.63	25.41	-208.93	-1005.99	40°00'54.487"N	104°46'59.352"W	0.07	
4744.00	7.780	249.790	4600.77	24.62	-212.43	-1017.48	40°00'54.452"N	104°46'59.500"W	1.35	
4830.00	7.320	247.610	4686.03	23.03	-216.53	-1028.01	40°00'54.412"N	104°46'59.635"W	0.63	
4915.00	6.060	249.460	4770.45	21.58	-220.16	-1037.22	40°00'54.376"N	104°46'59.754"W	1.50	
5000.00	4.760	257.940	4855.07	21.07	-222.48	-1044.87	40°00'54.353"N	104°46'59.852"W	1.79	
5086.00	3.150	262.890	4940.86	21.39	-223.51	-1050.71	40°00'54.343"N	104°46'59.927"W	1.91	



Actual Wellpath Report

MARRS 3N-28HZ AWP

Page 3 of 6



REFERENCE WELLPATH IDENTIFICATION

Operator	KERR-MCGEE OIL & GAS ONSHORE LP	Slot	SLOT#03 MARRS 3N-28HZ (275'FSL & 1922'FEL, SEC.28)
Area	COLORADO	Well	MARRS 3N-28HZ
Field	WELD COUNTY (KERR MCGEE)	Wellbore	MARRS 3N-28HZ AWB
Facility	SEC.28-T1N-R66W		

WELLPATH DATA (157 stations) † = interpolated/extrapolated station

MD [ft]	Inclination [°]	Azimuth [°]	TVD [ft]	Vert Sect [ft]	North [ft]	East [ft]	Latitude	Longitude	DLS [°/100ft]	Comments
5169.00	1.370	258.970	5023.79	21.66	-223.99	-1053.94	40°00'54.338"N	104°46'59.969"W	2.15	
5254.00	0.080	294.080	5108.79	21.74	-224.16	-1054.99	40°00'54.337"N	104°46'59.982"W	1.54	
5339.00	0.220	293.730	5193.79	21.87	-224.07	-1055.20	40°00'54.337"N	104°46'59.985"W	0.16	
5423.00	0.420	294.990	5277.78	22.16	-223.87	-1055.63	40°00'54.339"N	104°46'59.990"W	0.24	
5508.00	0.400	284.060	5362.78	22.49	-223.67	-1056.20	40°00'54.341"N	104°47'00.000"W	0.09	
5593.00	0.270	270.970	5447.78	22.67	-223.59	-1056.68	40°00'54.342"N	104°47'00.004"W	0.18	
5677.00	0.350	134.260	5531.78	22.50	-223.77	-1056.70	40°00'54.340"N	104°47'00.004"W	0.69	
5763.00	0.420	105.150	5617.78	22.13	-224.03	-1056.21	40°00'54.338"N	104°47'00.000"W	0.24	
5848.00	0.410	98.280	5702.78	21.87	-224.16	-1055.60	40°00'54.337"N	104°46'59.990"W	0.06	
5933.00	0.580	81.790	5787.77	21.73	-224.14	-1054.88	40°00'54.337"N	104°46'59.981"W	0.26	
6018.00	0.590	53.560	5872.77	21.86	-223.82	-1054.10	40°00'54.340"N	104°46'59.971"W	0.34	
6103.00	0.590	47.320	5957.76	22.25	-223.26	-1053.43	40°00'54.345"N	104°46'59.962"W	0.08	
6188.00	0.550	40.770	6042.76	22.71	-222.66	-1052.84	40°00'54.351"N	104°46'59.955"W	0.09	
6274.00	0.770	66.720	6128.75	23.05	-222.12	-1052.04	40°00'54.357"N	104°46'59.944"W	0.43	
6359.00	0.710	87.210	6213.75	23.06	-221.87	-1050.99	40°00'54.359"N	104°46'59.931"W	0.32	
6444.00	0.750	107.210	6298.74	22.68	-222.00	-1049.93	40°00'54.358"N	104°46'59.917"W	0.30	
6529.00	0.780	121.690	6383.73	21.99	-222.47	-1048.90	40°00'54.353"N	104°46'59.904"W	0.23	
6615.00	0.690	132.770	6469.73	21.15	-223.13	-1048.03	40°00'54.347"N	104°46'59.893"W	0.20	
6699.00	0.530	129.510	6553.72	20.42	-223.72	-1047.36	40°00'54.341"N	104°46'59.884"W	0.19	
6785.00	0.360	153.160	6639.72	19.84	-224.22	-1046.93	40°00'54.336"N	104°46'59.879"W	0.29	
6870.00	0.450	144.720	6724.72	19.28	-224.73	-1046.61	40°00'54.331"N	104°46'59.875"W	0.13	
6965.00	0.330	147.680	6819.71	18.67	-225.26	-1046.25	40°00'54.326"N	104°46'59.870"W	0.13	
6982.00	0.320	171.950	6836.71	18.58	-225.35	-1046.22	40°00'54.325"N	104°46'59.869"W	0.81	
7065.00	4.600	351.140	6919.63	21.67	-222.29	-1046.70	40°00'54.355"N	104°46'59.876"W	5.93	
7108.00	9.560	355.830	6962.29	26.92	-217.02	-1047.22	40°00'54.407"N	104°46'59.882"W	11.60	
7151.00	12.770	352.880	7004.47	35.17	-208.74	-1048.07	40°00'54.489"N	104°46'59.893"W	7.58	
7193.00	17.200	357.360	7045.03	45.90	-197.93	-1048.94	40°00'54.596"N	104°46'59.904"W	10.89	
7236.00	21.320	0.510	7085.62	59.75	-183.75	-1049.16	40°00'54.736"N	104°46'59.907"W	9.88	
7279.00	25.830	4.910	7125.02	76.27	-166.59	-1048.29	40°00'54.905"N	104°46'59.896"W	11.25	
7321.00	29.410	5.990	7162.23	94.71	-147.22	-1046.43	40°00'55.097"N	104°46'59.872"W	8.61	
7364.00	34.430	6.350	7198.72	116.16	-124.62	-1043.98	40°00'55.320"N	104°46'59.841"W	11.68	
7406.00	37.970	3.960	7232.61	139.71	-99.92	-1041.77	40°00'55.564"N	104°46'59.812"W	9.07	
7449.00	42.490	3.050	7265.43	166.31	-72.21	-1040.09	40°00'55.838"N	104°46'59.791"W	10.60	
7492.00	45.750	1.000	7296.29	195.20	-42.30	-1039.04	40°00'56.134"N	104°46'59.777"W	8.28	
7534.00	47.980	359.750	7325.01	225.00	-11.65	-1038.85	40°00'56.437"N	104°46'59.775"W	5.74	
7576.00	50.430	359.090	7352.45	256.03	20.14	-1039.17	40°00'56.751"N	104°46'59.779"W	5.95	
7618.00	54.410	357.970	7378.06	288.62	53.41	-1040.04	40°00'57.080"N	104°46'59.790"W	9.71	
7661.00	59.750	358.210	7401.42	324.01	89.47	-1041.24	40°00'57.436"N	104°46'59.806"W	12.43	
7704.00	63.700	356.280	7421.78	361.25	127.28	-1043.07	40°00'57.810"N	104°46'59.829"W	10.00	
7746.00	67.860	359.360	7439.01	398.83	165.54	-1044.51	40°00'58.188"N	104°46'59.848"W	11.95	
7789.00	70.650	359.600	7454.24	438.07	205.75	-1044.87	40°00'58.585"N	104°46'59.852"W	6.51	
7831.00	74.600	359.800	7466.78	477.14	245.83	-1045.08	40°00'58.981"N	104°46'59.855"W	9.42	
7874.00	79.560	0.410	7476.39	517.92	287.72	-1045.00	40°00'59.395"N	104°46'59.854"W	11.62	
7897.00†	80.881	0.356	7480.30	539.96	310.39	-1044.85	40°00'59.619"N	104°46'59.852"W	5.75	7" Casing Point
7917.00	82.030	0.310	7483.27	559.19	330.17	-1044.74	40°00'59.815"N	104°46'59.851"W	5.75	
7942.00	85.490	0.340	7485.99	583.35	355.01	-1044.60	40°01'00.060"N	104°46'59.849"W	13.84	
7981.00	89.720	0.340	7487.62	621.24	393.97	-1044.36	40°01'00.445"N	104°46'59.846"W	10.85	
8023.00	91.290	0.680	7487.25	662.05	435.97	-1043.99	40°01'00.860"N	104°46'59.841"W	3.82	
8108.00	91.680	0.630	7485.05	744.56	520.93	-1043.02	40°01'01.700"N	104°46'59.829"W	0.46	
8194.00	91.020	359.970	7483.02	828.18	606.91	-1042.57	40°01'02.549"N	104°46'59.823"W	1.09	
8279.00	91.260	359.250	7481.33	911.06	691.89	-1043.15	40°01'03.389"N	104°46'59.831"W	0.89	
8365.00	88.740	359.450	7481.33	995.02	777.87	-1044.12	40°01'04.239"N	104°46'59.843"W	2.94	
8450.00	88.980	359.090	7483.02	1078.01	862.85	-1045.21	40°01'05.079"N	104°46'59.857"W	0.51	
8533.00	90.120	359.300	7483.67	1159.09	945.84	-1046.37	40°01'05.899"N	104°46'59.872"W	1.40	
8617.00	90.060	358.850	7483.54	1241.18	1029.83	-1047.73	40°01'06.729"N	104°46'59.890"W	0.54	
8702.00	90.060	0.130	7483.45	1324.12	1114.82	-1048.48	40°01'07.569"N	104°46'59.899"W	1.51	
8787.00	90.710	0.900	7482.88	1406.71	1199.81	-1047.72	40°01'08.409"N	104°46'59.890"W	1.19	
8873.00	90.860	0.100	7481.70	1490.28	1285.80	-1046.97	40°01'09.258"N	104°46'59.880"W	0.95	
8958.00	90.980	359.430	7480.34	1573.11	1370.79	-1047.32	40°01'10.098"N	104°46'59.884"W	0.80	
9043.00	89.540	0.330	7479.95	1655.92	1455.79	-1047.50	40°01'10.938"N	104°46'59.887"W	2.00	



Actual Wellpath Report

MARRS 3N-28HZ AWP

Page 4 of 6



REFERENCE WELLPATH IDENTIFICATION			
Operator	KERR-MCGEE OIL & GAS ONSHORE LP	Slot	SLOT#03 MARRS 3N-28HZ (275'FSL & 1922'FEL, SEC.28)
Area	COLORADO	Well	MARRS 3N-28HZ
Field	WELD COUNTY (KERR MCGEE)	Wellbore	MARRS 3N-28HZ AWB
Facility	SEC.28-T1N-R66W		

WELLPATH DATA (157 stations)										
MD [ft]	Inclination [°]	Azimuth [°]	TVD [ft]	Vert Sect [ft]	North [ft]	East [ft]	Latitude	Longitude	DLS [°/100ft]	Comments
9129.00	89.600	359.590	7480.60	1739.68	1541.78	-1047.56	40°01'11.788"N	104°46'59.888"W	0.86	
9212.00	89.320	359.520	7481.38	1820.64	1624.78	-1048.20	40°01'12.608"N	104°46'59.896"W	0.35	
9297.00	89.290	359.270	7482.41	1903.61	1709.77	-1049.10	40°01'13.448"N	104°46'59.908"W	0.30	
9383.00	89.910	359.230	7483.01	1987.60	1795.76	-1050.22	40°01'14.298"N	104°46'59.922"W	0.72	
9468.00	88.180	0.200	7484.43	2070.45	1880.74	-1050.65	40°01'15.138"N	104°46'59.928"W	2.33	
9551.00	88.090	359.120	7487.13	2151.34	1963.69	-1051.14	40°01'15.958"N	104°46'59.934"W	1.31	
9635.00	87.770	358.560	7490.16	2233.45	2047.62	-1052.84	40°01'16.787"N	104°46'59.956"W	0.77	
9719.00	88.370	0.950	7492.99	2315.28	2131.56	-1053.20	40°01'17.617"N	104°46'59.960"W	2.93	
9804.00	88.350	1.510	7495.42	2397.58	2216.51	-1051.37	40°01'18.456"N	104°46'59.937"W	0.66	
9889.00	86.550	1.880	7499.21	2479.66	2301.38	-1048.86	40°01'19.295"N	104°46'59.905"W	2.16	
9974.00	86.240	1.360	7504.55	2561.68	2386.18	-1046.46	40°01'20.133"N	104°46'59.874"W	0.71	
10060.00	86.430	1.140	7510.05	2644.81	2471.99	-1044.59	40°01'20.981"N	104°46'59.850"W	0.34	
10145.00	87.500	0.880	7514.55	2727.11	2556.85	-1043.10	40°01'21.819"N	104°46'59.831"W	1.30	
10229.00	89.540	0.830	7516.72	2808.58	2640.81	-1041.84	40°01'22.649"N	104°46'59.815"W	2.43	
10314.00	89.910	0.820	7517.13	2891.07	2725.80	-1040.62	40°01'23.489"N	104°46'59.799"W	0.44	
10399.00	89.660	0.500	7517.44	2973.61	2810.79	-1039.64	40°01'24.329"N	104°46'59.787"W	0.48	
10486.00	89.140	0.140	7518.36	3058.21	2897.79	-1039.15	40°01'25.189"N	104°46'59.780"W	0.73	
10569.00	87.290	0.120	7520.94	3138.95	2980.74	-1038.97	40°01'26.008"N	104°46'59.778"W	2.23	
10654.00	86.420	359.820	7525.60	3221.60	3065.61	-1039.01	40°01'26.847"N	104°46'59.779"W	1.08	
10739.00	85.010	0.210	7531.96	3304.14	3150.37	-1038.99	40°01'27.685"N	104°46'59.778"W	1.72	
10825.00	84.480	358.880	7539.83	3387.68	3236.01	-1039.67	40°01'28.531"N	104°46'59.787"W	1.66	
10910.00	85.700	358.030	7547.11	3470.63	3320.66	-1041.95	40°01'29.368"N	104°46'59.817"W	1.75	
10995.00	87.140	358.280	7552.41	3553.82	3405.45	-1044.68	40°01'30.205"N	104°46'59.852"W	1.72	
11080.00	88.680	357.620	7555.51	3637.17	3490.34	-1047.72	40°01'31.044"N	104°46'59.891"W	1.97	
11165.00	90.550	359.000	7556.09	3720.47	3575.29	-1050.23	40°01'31.884"N	104°46'59.923"W	2.73	
11251.00	90.430	359.590	7555.35	3804.44	3661.28	-1051.29	40°01'32.734"N	104°46'59.937"W	0.70	
11336.00	90.060	359.180	7554.99	3887.42	3746.28	-1052.20	40°01'33.574"N	104°46'59.949"W	0.65	
11421.00	89.450	358.200	7555.35	3970.61	3831.25	-1054.14	40°01'34.413"N	104°46'59.974"W	1.36	
11506.00	88.310	357.290	7557.01	4054.06	3916.17	-1057.49	40°01'35.252"N	104°47'00.017"W	1.72	
11589.00	88.770	357.790	7559.13	4135.59	3999.06	-1061.05	40°01'36.072"N	104°47'00.062"W	0.82	
11674.00	89.510	358.650	7560.40	4218.91	4084.01	-1063.69	40°01'36.911"N	104°47'00.096"W	1.33	
11758.00	90.280	359.400	7560.56	4301.02	4168.00	-1065.12	40°01'37.741"N	104°47'00.115"W	1.28	
11843.00	89.510	358.760	7560.71	4384.09	4252.99	-1066.48	40°01'38.581"N	104°47'00.132"W	1.18	
11928.00	88.840	358.670	7561.94	4467.26	4337.96	-1068.39	40°01'39.421"N	104°47'00.157"W	0.80	
12012.00	88.000	357.200	7564.25	4549.66	4421.87	-1071.41	40°01'40.250"N	104°47'00.196"W	2.01	
12066.00	87.940	356.250	7566.16	4602.83	4475.74	-1074.49	40°01'40.782"N	104°47'00.236"W	1.76	Last BHI MWD Survey
12134.00	87.940	356.250	7568.61	4669.87	4543.55	-1078.94	40°01'41.452"N	104°47'00.293"W	0.00	Projection to Bit

HOLE & CASING SECTIONS - Ref Wellbore: MARRS 3N-28HZ AWB Ref Wellpath: MARRS 3N-28HZ AWP									
String/Diameter	Start MD [ft]	End MD [ft]	Interval [ft]	Start TVD [ft]	End TVD [ft]	Start N/S [ft]	Start E/W [ft]	End N/S [ft]	End E/W [ft]
13.5in Open Hole	16.00	1341.00	1325.00	16.00	1331.83	0.00	0.00	-17.22	-114.87
9.625in Casing Surface	16.00	1341.00	1325.00	16.00	1331.83	0.00	0.00	-17.22	-114.87
8.75in Open Hole	1341.00	7995.00	6654.00	1331.83	7487.62	-17.22	-114.87	407.97	-1044.27
7in Casing Intermediate	16.00	7897.00	7881.00	16.00	7480.30	0.00	0.00	310.39	-1044.85
6.125in Open Hole	7897.00	12134.00	4237.00	7480.30	7568.61	310.39	-1044.85	4543.55	-1078.94



Actual Wellpath Report

MARRS 3N-28HZ AWP

Page 5 of 6



REFERENCE WELLPATH IDENTIFICATION			
Operator	KERR-MCGEE OIL & GAS ONSHORE LP	Slot	SLOT#03 MARRS 3N-28HZ (275'FSL & 1922'FEL, SEC.28)
Area	COLORADO	Well	MARRS 3N-28HZ
Field	WELD COUNTY (KERR MCGEE)	Wellbore	MARRS 3N-28HZ AWB
Facility	SEC.28-T1N-R66W		

TARGETS									
Name	MD [ft]	TVD [ft]	North [ft]	East [ft]	Grid East [US ft]	Grid North [US ft]	Latitude	Longitude	Shape
MARRS PAD SECTION LINES		-1.00	-0.30	48.16	3201832.76	1249388.96	40°00'56.549"N	104°46'45.804"W	polygon
MARRS 3N-28HZ BHL ON PLAT (460'FNL & 2270'FWL, REV-1)		7461.00	4548.97	-1062.78	3200684.93	1253928.89	40°01'41.506"N	104°47'00.085"W	point
MARRS PAD HARDLINES (460' SETBACKS)		7461.00	-0.30	48.16	3201832.76	1249388.96	40°00'56.549"N	104°46'45.804"W	polygon
MARRS 3N-28HZ BHL ON PLAT (460'FNL & 2270'FWL, REV-2)		7481.00	4548.97	-1062.78	3200684.93	1253928.89	40°01'41.506"N	104°47'00.085"W	point

WELLPATH COMPOSITION - Ref Wellbore: MARRS 3N-28HZ AWB					Ref Wellpath: MARRS 3N-28HZ AWP	
Start MD [ft]	End MD [ft]	Positional Uncertainty Model	Log Name/Comment		Wellbore	
16.00	1304.00	NaviTrak (Standard)	BHI MWD SURVEYS 13 1/2" HOLE <155-1304>		MARRS 3N-28HZ AWB	
1304.00	7942.00	NaviTrak (Standard)	BHI MWD SURVEYS 8 3/4" HOLE <1428-7942>		MARRS 3N-28HZ AWB	
7942.00	12066.00	OnTrak (Standard)	BHI MWD SURVEYS 6/8" HOLE <7981-12066>		MARRS 3N-28HZ AWB	
12066.00	12134.00	Blind Drilling (std)	Projection to bit		MARRS 3N-28HZ AWB	



Actual Wellpath Report

MARRS 3N-28HZ AWP

Page 6 of 6



REFERENCE WELLPATH IDENTIFICATION			
Operator	KERR-MCGEE OIL & GAS ONSHORE LP	Slot	SLOT#03 MARRS 3N-28HZ (275'FSL & 1922'FEL, SEC.28)
Area	COLORADO	Well	MARRS 3N-28HZ
Field	WELD COUNTY (KERR MCGEE)	Wellbore	MARRS 3N-28HZ AWB
Facility	SEC.28-T1N-R66W		

WELLPATH COMMENTS				
MD [ft]	Inclination [°]	Azimuth [°]	TVD [ft]	Comment
16.00	0.000	69.070	16.00	Tie-On
155.00	0.440	69.070	155.00	Begin BHI MWD Surveys
7897.00	80.881	0.356	7480.30	7" Casing Point
12066.00	87.940	356.250	7566.16	Last BHI MWD Survey
12134.00	87.940	356.250	7568.61	Projection to Bit