

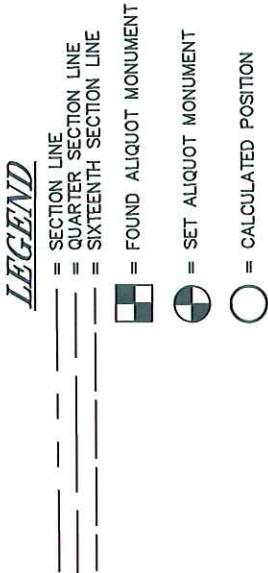
ECHEVERRIA  
4-2-2

# WELL LOCATION

LOCATION  
NW¼ SEC. 2, T.2N., R.67W.

See Visible Improvements Exhibit  
for all visible improvements within  
200' of wellhead.

Nearest building, public road, above  
ground utility, of railroad: ±676'  
Nearest property line: 480'

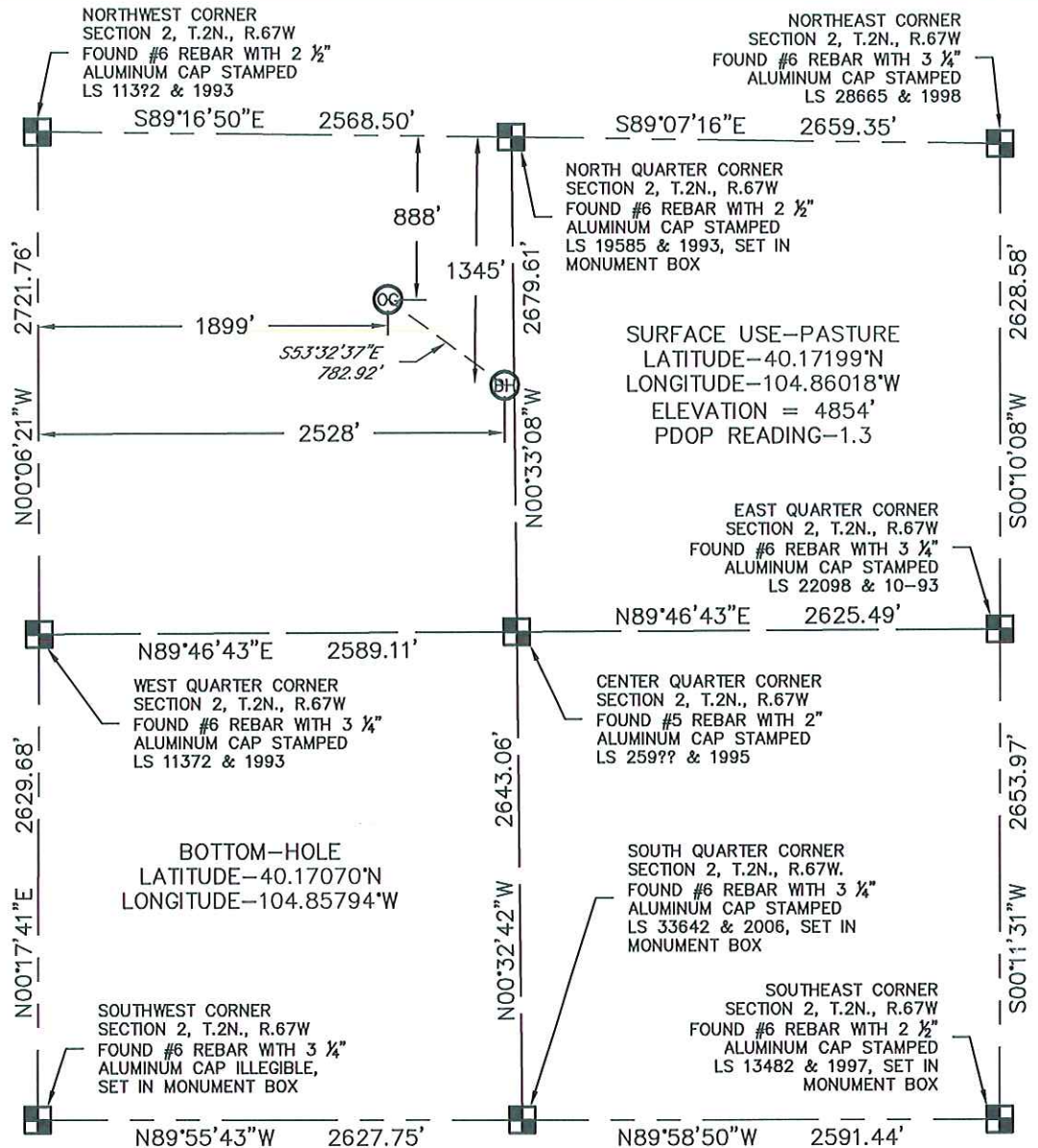


All distances to section lines  
are measured perpendicular to  
said section lines.

Ground elevation shown is  
approximate and is based on  
an observed GPS elevation  
(NAVD 1988 DATUM).

Bearings shown are Grid Bearings of  
the Colorado State Plane Coordinate  
System, North Zone, North American  
Datum 1983/2007.

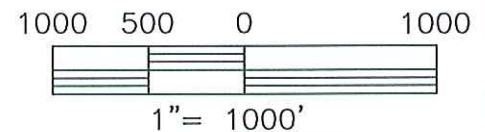
The lineal dimensions as contained  
herein are based upon the "U.S.  
Survey Foot."



King Surveyors Inc. of Windsor, Colorado has in accordance with a request from DAVE BALE  
for ENCANA OIL AND GAS determined the surface location of ECHEVERRIA 4-2-2 to be 888'  
from the North line and 1899' from the West line and the bottom hole location to be 1345'  
from the North line and 2528' from the West line of Section 2, Township 2 North, Range 67  
West of the Sixth Principal Meridian, County of Weld, State of Colorado.



Steven A. Lund-On behalf of King Surveyors, Inc.  
Licensed Land Surveyor No. 34995  
State of Colorado



**KING SURVEYORS, INC.**

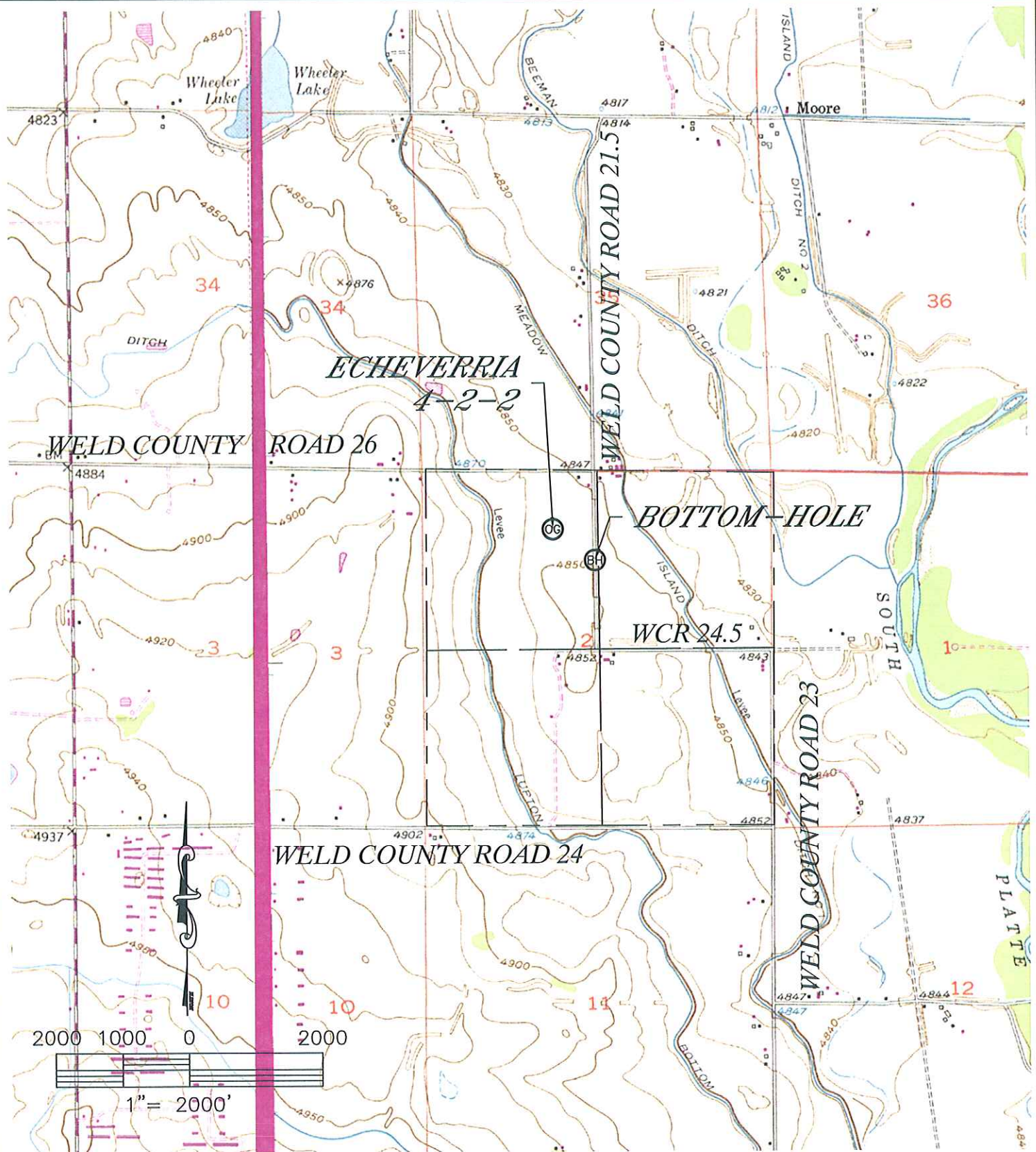
650 E. Garden Drive | Windsor, Colorado 80550  
phone: (970) 686-5011 | fax: (970) 686-5821  
www.kingsurveyors.com

**PROJECT NO:** 2009017  
**DATE:** 1-19-09  
**CLIENT:** ENCANA OIL & GAS  
**DWG:** 2009017WELL  
**FIELD OPERATOR:** BEN ADSIT  
**DATE OF WORK:** 1-15-09

ECHEVERRIA  
4-2-2

## VICINITY

LOCATION  
NW¼ SEC. 2, T.2N., R.67W.



**KING SURVEYORS, INC.**

650 E. Garden Drive | Windsor, Colorado 80550

phone: (970) 686-5011 | fax: (970) 686-5821

[www.kingsurveyors.com](http://www.kingsurveyors.com)

**PROJECT NO:** 2009017

**DATE:** 1-19-09

**CLIENT:** ENCANA OIL & GAS

**DWG:** 2009017WELL

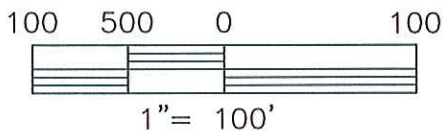
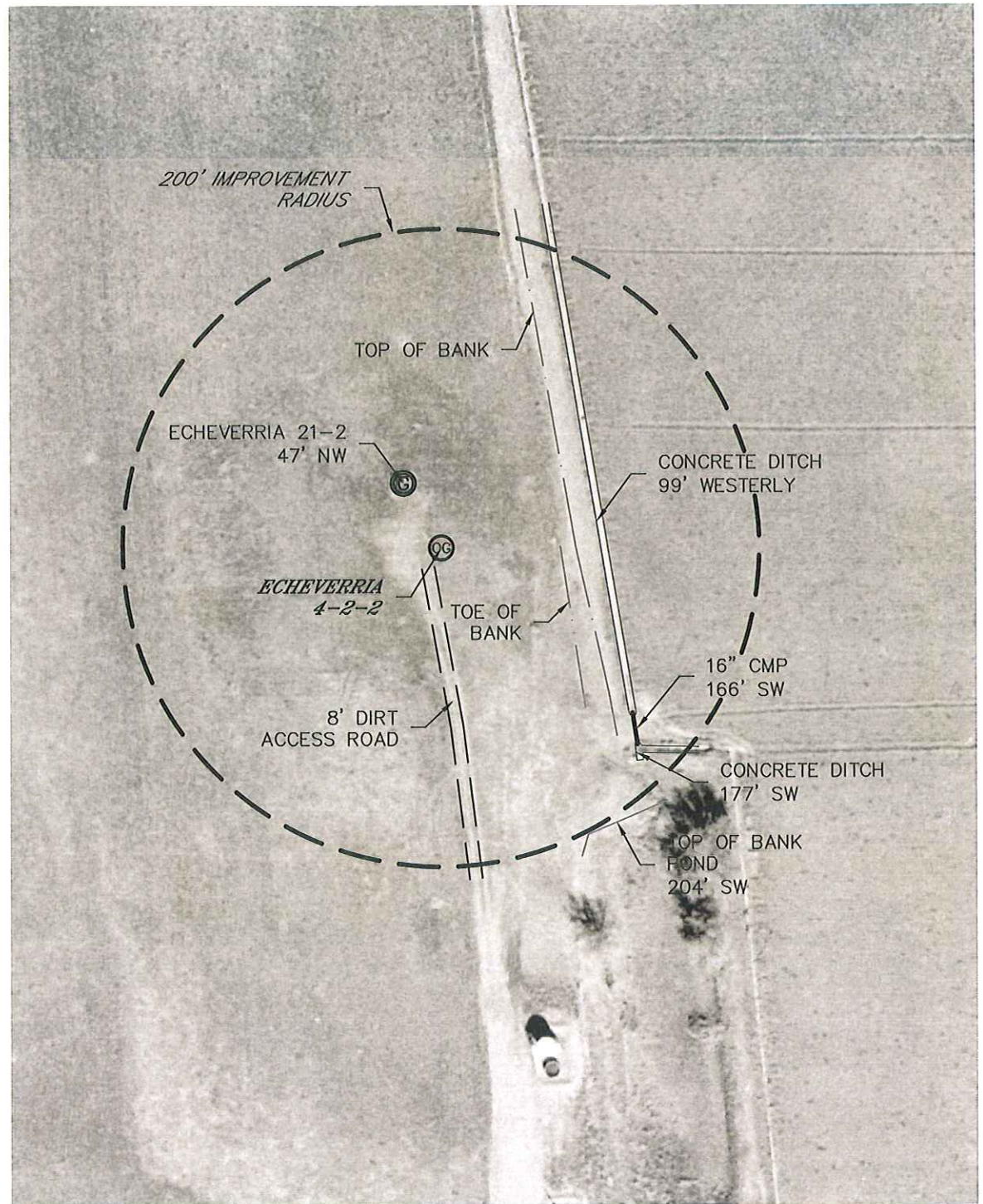
**FIELD OPERATOR:** BEN ADSIT

**DATE OF WORK:** 1-15-09

ECHEVERRIA  
4-2-2

# IMPROVEMENTS

LOCATION  
NW¼ SEC. 2, T.2N., R.67W.



**KING SURVEYORS, INC.**

650 E. Garden Drive | Windsor, Colorado 80550

phone: (970) 686-5011 | fax: (970) 686-5821

[www.kingsurveyors.com](http://www.kingsurveyors.com)

**PROJECT NO:** 2009017

**DATE:** 1-19-09

**CLIENT:** ENCANA OIL & GAS

**DWG:** 2009017WELL

**FIELD OPERATOR:** BEN ADSIT

**DATE OF WORK:** 1-15-09