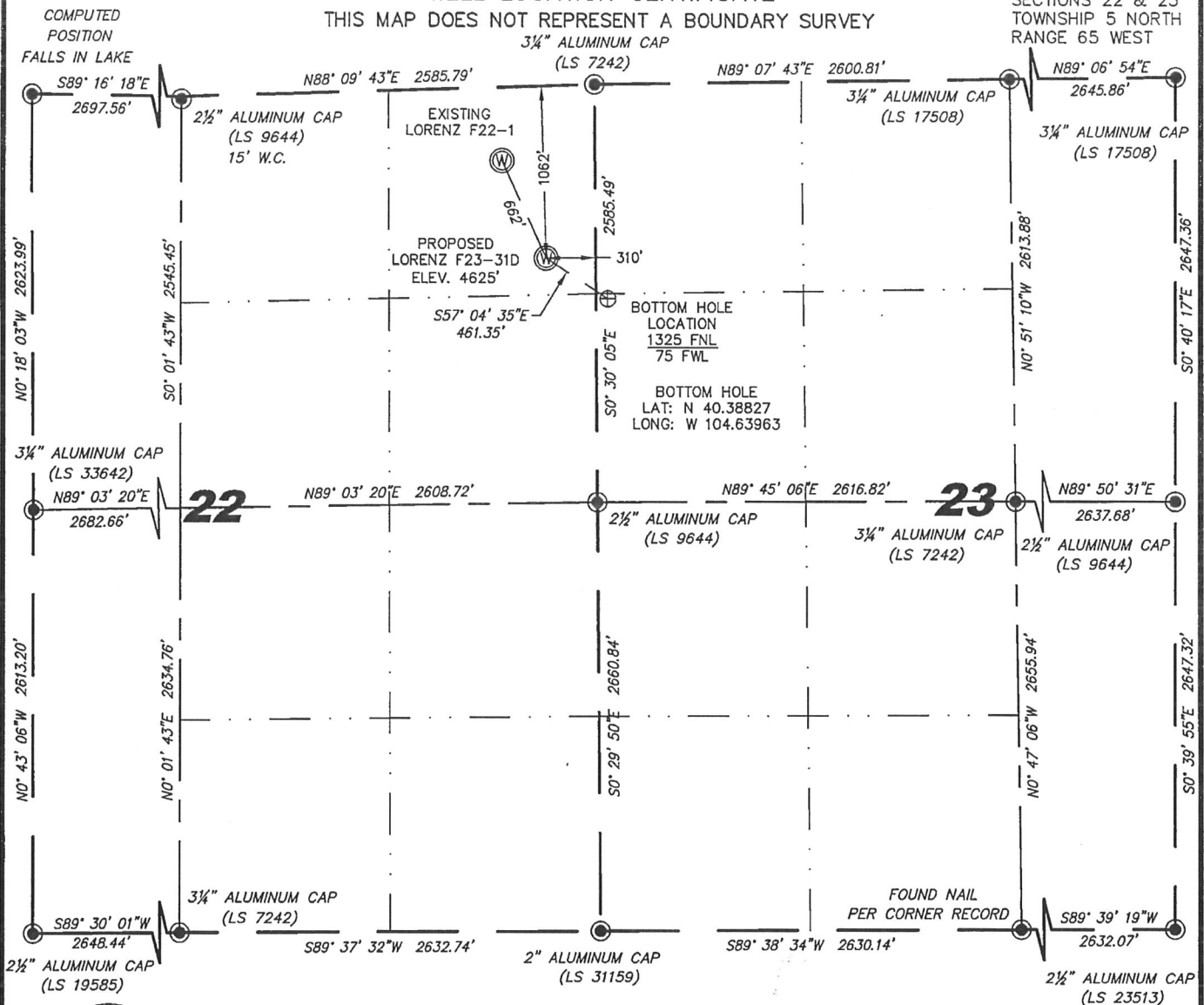


Cheyenne, Wyoming 82009

SECTIONS 22 & 23  
TOWNSHIP 5 NORTH  
RANGE 65 WEST



IN ACCORDANCE WITH A REQUEST FROM RYAN HAWKINS - NOBLE ENERGY INC, STEEL SERVICES, LLC HAS DETERMINED THE LOCATION OF THE LORENZ F23-31D WELL TO BE 1062' FNL, 310' FEL, AS MEASURED AT NINETY (90) DEGREES FROM THE SECTION LINES, SECTION 22, TOWNSHIP 5 NORTH, RANGE 65 WEST, 6TH PRINCIPLE MERIDIAN, WELD COUNTY, COLORADO.

I HEREBY CERTIFY THAT THIS WELL LOCATION CERTIFICATE WAS PREPARED BY ME, OR UNDER MY DIRECT SUPERVISION, THAT THE FIELD WORK WAS COMPLETED ON 10/25/2011, FOR AND ON BEHALF OF NOBLE ENERGY INC, THAT IT IS NOT A LAND SURVEY PLAT OR AN IMPROVEMENT SURVEY PLAT, AND THAT IT IS NOT TO BE RELIED UPON FOR ESTABLISHMENT OF FENCE, BUILDING, OR OTHER FUTURE IMPROVEMENT LINES.



0 1000

Scale: 1" = 1000'

NOTES:

- 1) BASIS OF BEARINGS FOR THIS MAP ARE BASED UPON GPS OBSERVATIONS MADE ON 11/01/2011 BETWEEN MONUMENTS LOCATED AT THE SOUTHEAST SECTION CORNER AND THE NORTHEAST SECTION CORNER OF SAID SECTION AND WITH ALL BEARINGS SHOWN HEREON RELATIVE THERETO.
- 2) COORDINATES SHOWN ARE COLORADO STATE PLANE (NORTH ZONE) NAD 83.
- 3) ELEVATIONS ARE BASED UPON NGS OPUS SOLUTION NAVD 88 DATUM.
- 4) THE NEAREST EXISTING WELL IS: LORENZ F22-1, 662' NORTHWEST.
- 5) SEE LOCATION DRAWING FOR ALL IMPROVEMENTS WITHIN VISIBLE IMPROVEMENTS LIMIT.
- 6) THE LOCATION FALLS IN PASTURE LAND.

LATITUDE & LONGITUDE (NAD 83 SURFACE HOLE):

LATITUDE: N 40.38897°

LONGITUDE: W 104.64101'

PDOP: 2.0

QUARTER-QUARTER: NE/4NE/4

NEAREST PROPERTY LINE: 310' TO THE EAST

### LEGEND

- (C) FOUND SURVEY MONUMENT PER  
 MONUMENT RECORD - EXCEPTIONS NOTED.  
 (C) CALCULATED DIMENSION

NOTICE: According to Colorado law you MUST commence any legal action based upon any defect in this W.L.C. within three years after you first discover such defect. In no event may any action based upon any defect in this W.L.C. be commenced more than ten years from this sold date of the certification shown hereon.

David C. Holmes  
Professional Land Surveyor Registration No. 32828  
State of Colorado

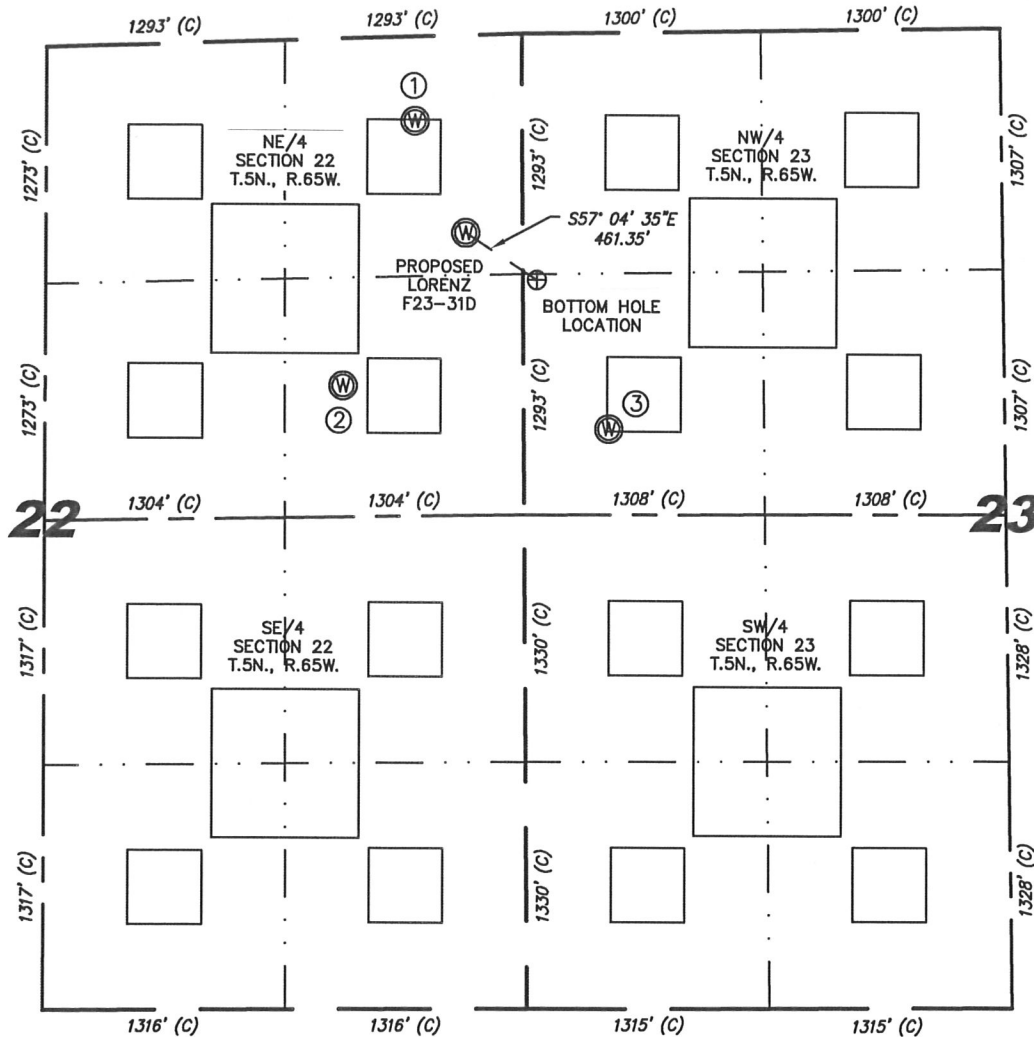
JOB #: 11086

Completed 11/07/2011



# SKETCH - LORENZ F23-31D

SECTIONS 22 & 23  
TOWNSHIP 5 NORTH  
RANGE 65 WEST



①

LORENZ F22-1  
NE/NE SEC. 22  
453' FNL  
584' FEL  
EL 4624'  
N 40.39062  
W 104.64199  
PDOP 2.8

②

UNIOIL RIVER  
NO. 1  
SE/NE SEC. 22  
1864' FNL  
984' FEL  
EL 4636'  
N 40.38672  
W 104.64343  
PDOP 2.1

③

DOLL PM F23-5  
SW/NW SEC. 23  
2130' FNL  
462' FWL  
EL 4642'  
N 40.38606  
W 104.63824  
PDOP 2.8



0 1000

Scale: 1" = 1000'

## NOTES:

- 1) THIS SKETCH DOES NOT REPRESENT A BOUNDARY SURVEY.
- 2) THE DATUM FOR THE LATITUDES AND LONGITUDES ON THIS SKETCH IS NAD83.