

---

# **WPX ENERGY ROCKY MOUNTAIN LLC-EBUS**

---

**SG 11-23  
GRAND VALLEY  
Garfield County , Colorado**

## **Cement Surface Casing** **23-Feb-2012**

### **Post Job Summary**

## The Road to Excellence Starts with Safety

Sold To #: 300721	Ship To #: 2906963	Quote #:	Sales Order #: 9305700
Customer: WPX ENERGY ROCKY MOUNTAIN LLC-EBUS	Customer Rep: Schults, Mike		
Well Name: SG	Well #: 11-23	API/UWI #: 05-045-20827	
Field: GRAND VALLEY	City (SAP): PARACHUTE	County/Parish: Garfield	State: Colorado
Lat: N 39.427 deg. OR N 39 deg. 25 min. 38.042 secs.	Long: W 108.082 deg. OR W -109 deg. 55 min. 5.884 secs.		
Contractor: H&P 271	Rig/Platform Name/Num: H&P 271		
Job Purpose: Cement Surface Casing			
Well Type: Development Well	Job Type: Cement Surface Casing		
Sales Person: MAYO, MARK	Srvc Supervisor: SMITH, DUSTIN	MBU ID Emp #: 418015	

### Job Personnel

HES Emp Name	Exp Hrs	Emp #	HES Emp Name	Exp Hrs	Emp #	HES Emp Name	Exp Hrs	Emp #
HYDE, DUSTIN C	6.5	453940	KUKUS, CHRISTOPHER A	6.5	413952	MILLER II, MATTHEW Reginald	6.5	425164
SMITH, DUSTIN Michael	6.5	418015						

### Equipment

HES Unit #	Distance-1 way	HES Unit #	Distance-1 way	HES Unit #	Distance-1 way	HES Unit #	Distance-1 way
10867423	60 mile	10872429	60 mile	10897887	60 mile	10951247	60 mile
11360871	60 mile						

### Job Hours

Date	On Location Hours	Operating Hours	Date	On Location Hours	Operating Hours	Date	On Location Hours	Operating Hours
2-22-12	1.5	1	2-23-12	5	2			
TOTAL	6.5	3	Total is the sum of each column separately					

### Job

Formation Name	Top	Bottom	Called Out	Date	Time	Time Zone
Formation Depth (MD)			On Location	22 - Feb - 2012	18:45	MST
Form Type		BHST	Job Started	22 - Feb - 2012	22:30	MST
Job depth MD	1060. ft	Job Depth TVD	Job Completed	23 - Feb - 2012	02:06	MST
Water Depth		Wk Ht Above Floor	Departed Loc	23 - Feb - 2012	03:00	MST
Perforation Depth (MD)	From	To		23 - Feb - 2012	05:00	MST

### Well Data

Description	New / Used	Max pressure psig	Size in	ID in	Weight lbm/ft	Thread	Grade	Top MD ft	Bottom MD ft	Top TVD ft	Bottom TVD ft
OPEN HOLE				13.5				.	1060.		
SURFACE CASING	New		9.625	9.001	32.3			.	1045.		

### Sales/Rental/3<sup>rd</sup> Party (HES)

Description	Qty	Qty uom	Depth	Supplier
PLUG,CMTG,TOP,9 5/8,HWE,8.16 MIN/9.06 MA	1	EA		

### Tools and Accessories

Type	Size	Qty	Make	Depth	Type	Size	Qty	Make	Depth	Type	Size	Qty	Make
Guide Shoe					Packer					Top Plug	9 5/8	1	HES
Float Shoe					Bridge Plug					Bottom Plug			
Float Collar					Retainer					SSR plug set			
Insert Float										Plug Container	9 5/8	1	HES
Stage Tool										Centralizers			

### Miscellaneous Materials

Gelling Agt	Conc	Surfactant	Conc	Acid Type	Qty	Conc	%
Treatment Fld	Conc	Inhibitor	Conc	Sand Type	Size		Qty

### Fluid Data

Stage/Plug #: 1

Fluid #	Stage Type	Fluid Name	Qty	Qty uom	Mixing Density lbm/gal	Yield ft <sup>3</sup> /sk	Mix Fluid Gal/sk	Rate bbl/min	Total Mix Fluid Gal/sk
1	Fresh Water		20.00	bbl	8.33	.0	.0	4.0	
2	VersaCem Lead	VERSACEM (TM) SYSTEM (452010)	150.0	sacks	12.3	2.38	13.75	7.0	13.75
	13.75 Gal	FRESH WATER							
3	VersaCem Tail	VERSACEM (TM) SYSTEM (452010)	160.0	sacks	12.8	2.11	11.75	7.0	11.75
	11.75 Gal	FRESH WATER							
4	Displacement Fluid		78.90	bbl	8.34	.0	.0	10.0	
<b>Calculated Values</b>		<b>Pressures</b>		<b>Volumes</b>					
Displacement	78.9	Shut In: Instant		Lost Returns	0	Cement Slurry	123.7	Pad	
Top Of Cement	SURFACE	5 Min		Cement Returns	25	Actual Displacement	78.9	Treatment	
Frac Gradient		15 Min		Spacers	20	Load and Breakdown		Total Job	222.6
<b>Rates</b>									
Circulating		Mixing	7.0	Displacement	10.0	Avg. Job			8.5
Cement Left In Pipe	Amount	44 ft	Reason	Shoe Joint					
Frac Ring # 1 @	ID		Frac ring # 2 @	ID		Frac Ring # 3 @	ID		Frac Ring # 4 @
The Information Stated Herein Is Correct				Customer Representative Signature					

*The Road to Excellence Starts with Safety*

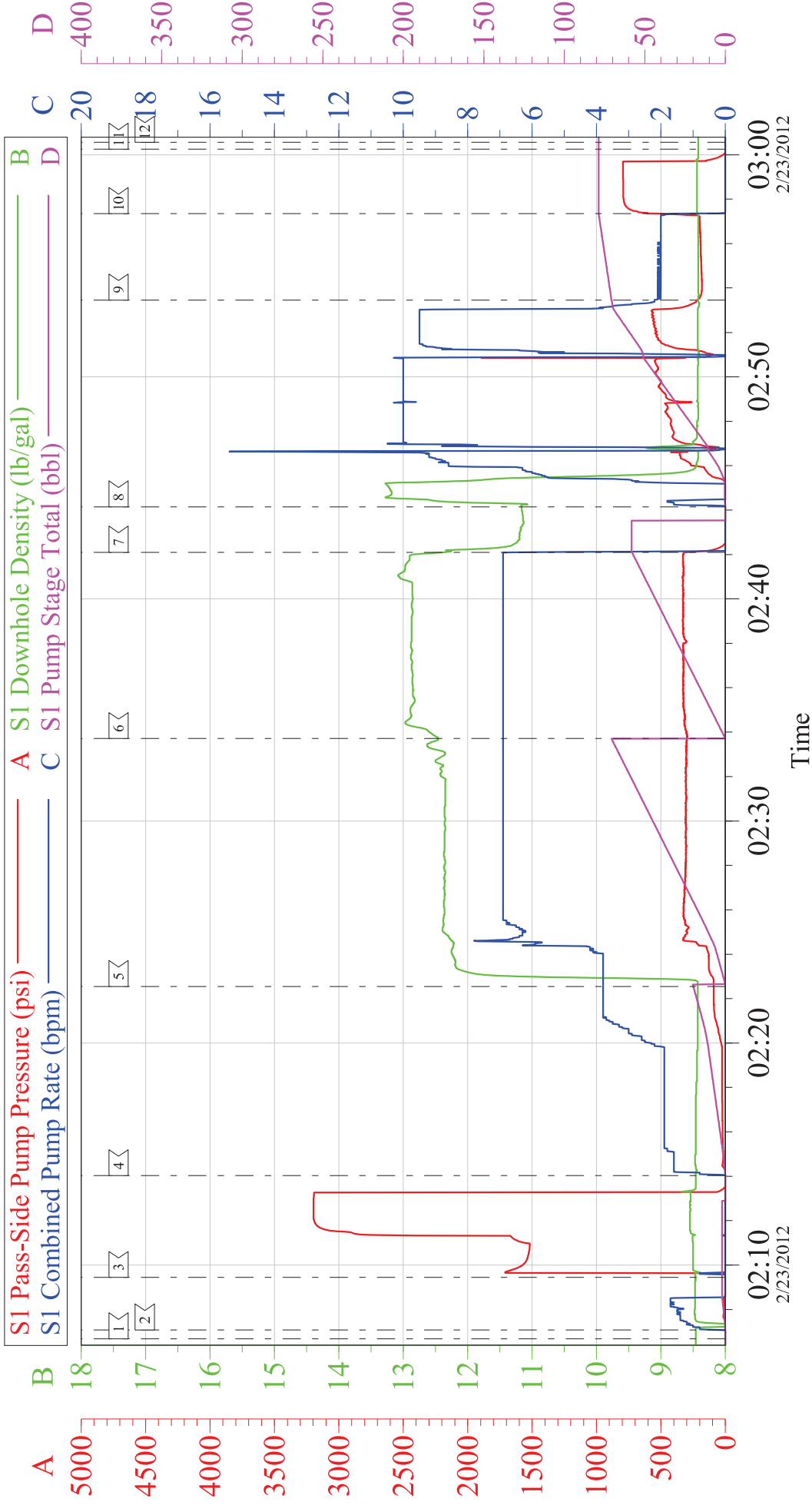
Sold To #: 300721	Ship To #: 2906963	Quote #:	Sales Order #: 9305700
Customer: WPX ENERGY ROCKY MOUNTAIN LLC-EBUS	Customer Rep: Schults, Mike		
Well Name: SG	Well #: 11-23	API/UWI #: 05-045-20827	
Field: GRAND VALLEY	City (SAP): PARACHUTE	County/Parish: Garfield	State: Colorado
Legal Description:			
Lat: N 39.427 deg. OR N 39 deg. 25 min. 38.042 secs.		Long: W 108.082 deg. OR W -109 deg. 55 min. 5.884 secs.	
Contractor: H&P 271	Rig/Platform Name/Num: H&P 271		
Job Purpose: Cement Surface Casing			Ticket Amount:
Well Type: Development Well	Job Type: Cement Surface Casing		
Sales Person: MAYO, MARK	Srv Supervisor: SMITH, DUSTIN	MBU ID Emp #: 418015	

Activity Description	Date/Time	Cht #	Rate bbl/min	Volume bbl		Pressure psig		Comments
				Stage	Total	Tubing	Casing	
Call Out	02/22/2012 18:45							ELITE # 7
Depart Yard Safety Meeting	02/22/2012 21:20							ALL HES EMPLOYEES
Arrive At Loc	02/22/2012 22:30							ARRIVED ON LOCATION 1 1/2 HOURS EARLY DIDNT START CHARGING TIME UNTIL REQUESTED ON LOCATION TIME RIG RIGGING UP CASING CREW
Assessment Of Location Safety Meeting	02/22/2012 23:00							ALL HES EMPLOYEES
Pre-Rig Up Safety Meeting	02/22/2012 23:10							ALL HES EMPLOYEES
Rig-Up Equipment	02/22/2012 23:20							1 F-550 PICKUP 1 HT-400 PUMP TRUCK 1 660 BULK TRUCK
Pre-Job Safety Meeting	02/23/2012 01:50							ALL HES EMPLOYEES AND RIG CREW
Rig-Up Completed	02/23/2012 02:06							RIG CIRCULATED FOR 1 HOUR PRIOR TO JOB NO PIPE MOVEMENT DURING CIRCULATION
Start Job	02/23/2012 02:06							TD: 1060 TP: 1045 SJ: 44 9 5/8 32.3 CSG 13 1/2 OH MUD WT: 10.1 PPG
Test Lines	02/23/2012 02:09					3209.0		PRESSURE TEST OK
Pump Spacer	02/23/2012 02:14		4	20	20		106.0	FRESH WATER

Activity Description	Date/Time	Cht #	Rate bbl/min	Volume bbl		Pressure psig		Comments
				Stage	Total	Tubing	Casing	
Pump Lead Cement	02/23/2012 02:22		7	63.6	63.6		338.0	150 SKS 12.3 PPG 2.38 YIELD 13.75 GAL/SK CEMENT WEIGHT VERIFIED VIA MUD SCALES THROUGHOUT LEAD CEMENT
Pump Tail Cement	02/23/2012 02:33		7	60.1	60.1		345.0	160 SKS 12.8 2.11 YIELD 11.75 GAL/SK CEMENT WEIGHT VERIFIED VIA MUD SCALES THROUGHOUT TAIL CEMENT
Shutdown	02/23/2012 02:42							
Drop Plug	02/23/2012 02:42							PLUG AWAY NO PROBLEMS
Pump Displacement	02/23/2012 02:44		10	78.9	78.9		558.0	FRESH WATER DISPLACEMENT
Slow Rate	02/23/2012 02:53		2	68.9	68.9		240.0	SLOW RATE TO BUMP PLUG
Bump Plug	02/23/2012 02:57		2	78.9	78.9		808.0	PSI BEFORE BUMPING @230 PSI BUMPED PLUG UP TO 808 PSI
Check Floats	02/23/2012 03:00							FLOATS HELD 1/2 BBL BACK TO DISPLACEMENT TANK
End Job	02/23/2012 03:00							GOOD CIRCULATION THROUGHOUT JOB NO PIPE MOVEMENT DURING JOB 25 BBLS CEMENT TO SURFACE RIG USED 30 LBS SUGAR
Pre-Rig Down Safety Meeting	02/23/2012 03:10							ALL HES EMPLOYEES
Rig-Down Equipment	02/23/2012 03:30							
Pre-Convoy Safety Meeting	02/23/2012 04:50							ALL HES EMPLOYEES
Crew Leave Location	02/23/2012 05:00							THANK YOU FOR USING HALLIBURTON CEMENT DUSTIN SMITH AND CREW

# WPX SG 11-23

## 9 5/8 SURFACE



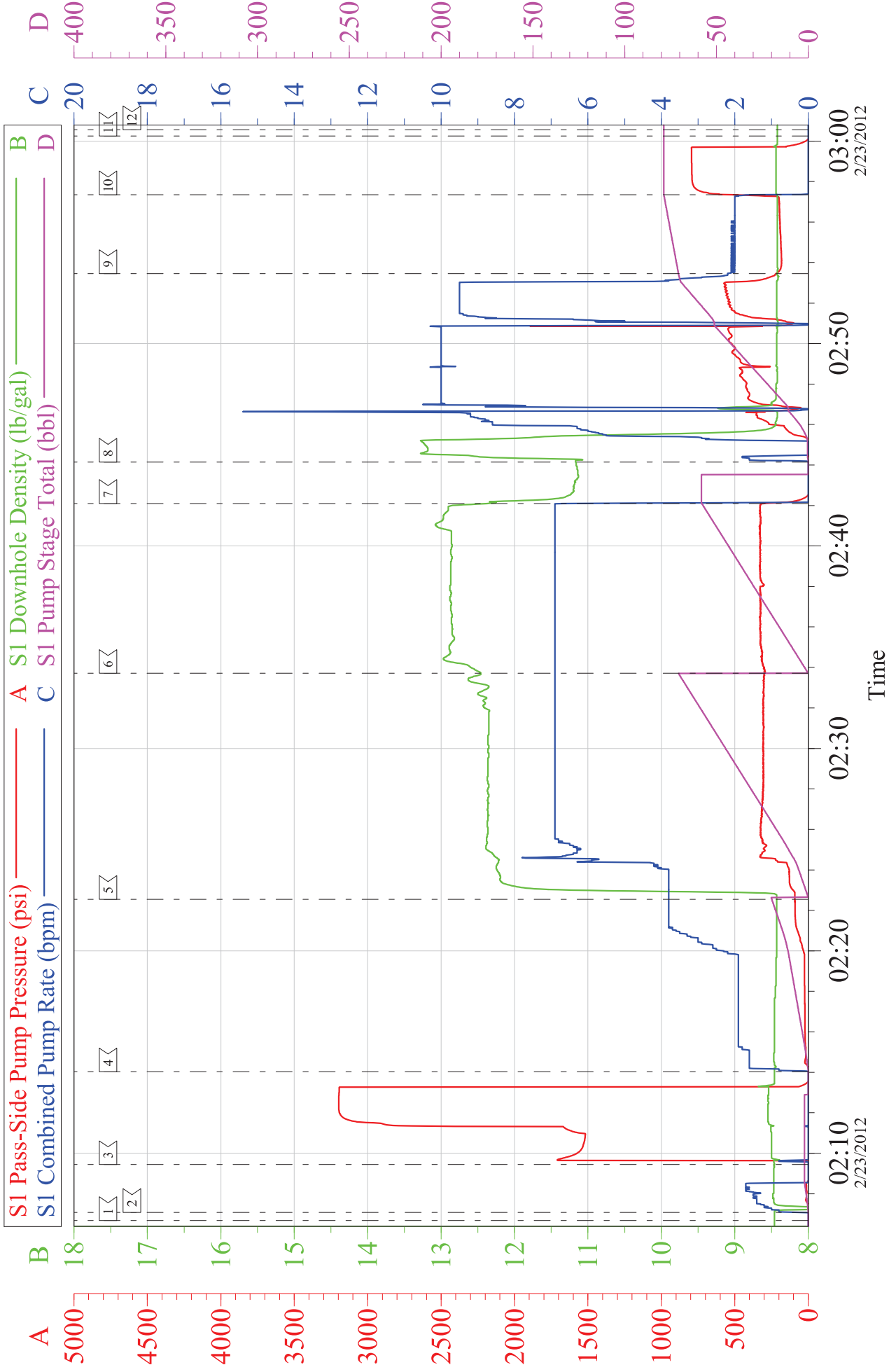
Customer: WPX  
Well Description: SG 11-23  
Company Rep: RON TOWERS

Job Date: 23-Feb-2012  
Job Type: 9 5/8 SURFACE  
Cement Supervisor: DUSTIN SMITH

Sales Order #: 9305700  
ADC Used: YES  
Elite #: 7 REGGIE MILLER

# WPX SG 11-23

## 9 5/8 SURFACE



Customer: WPX  
Well Description: SG 11-23  
Company Rep: RON TOWERS

Job Date: 23-Feb-2012  
Job Type: 9 5/8 SURFACE  
Cement Supervisor: DUSTIN SMITH

Sales Order #: 9305700  
ADC Used: YES  
Elite #: 7 REGGIE MILLER

# HALLIBURTON

## Water Analysis Report

Company: WILLIAMS PRODUCTION

Submitted by: DUSTIN SMITH

Attention: J. TROUT/C.MARTINEZ

Lease GGU FED

Well # 32B-32-691

Date: 8/18/2010

Date Rec.: 8/18/2010

S.O.# 7565564

Job Type: SURFACE

Specific Gravity	<i>MAX</i>	<b>1</b>
pH	<i>8</i>	<b>6.8</b>
Potassium (K)	<i>5000</i>	<b>0</b> Mg / L
Calcium (Ca)	<i>500</i>	<b>120</b> Mg / L
Iron (FE2)	<i>300</i>	<b>0</b> Mg / L
Chlorides (Cl)	<i>3000</i>	<b>0</b> Mg / L
Sulfates (SO <sub>4</sub> )	<i>1500</i>	<b>UNDER 200</b> Mg / L
Chlorine (Cl <sub>2</sub> )		<b>0</b> Mg / L
Temp	<i>40-80</i>	<b>70</b> Deg
Total Dissolved Solids		<b>130</b> Mg / L

Respectfully: DUSTIN SMITH

Title: CEMENTING SUPERVISOR

Location: Grand Junction, CO

NOTICE:

This report is limited to the described sample tested. Any person using or relying on this report agrees that Halliburton shall not be liable for any loss or damage whether due to act or omission resulting from such report c



<b>Sales Order #:</b> 9305700	<b>Line Item:</b> 10	<b>Survey Conducted Date:</b> 2/23/2012
<b>Customer:</b> WPX ENERGY ROCKY MOUNTAIN LLC-EBUS		<b>Job Type (BOM):</b> CMT SURFACE CASING BOM
<b>Customer Representative:</b> RON TOWERS		<b>API / UWI: (leave blank if unknown)</b> 05-045-20827
<b>Well Name:</b> SG		<b>Well Number:</b> 11-23
<b>Well Type:</b> Development Well	<b>Well Country:</b> United States of America	
<b>H2S Present:</b>	<b>Well State:</b> Colorado	<b>Well County:</b> Garfield

Dear Customer,

We hope that you were satisfied with the service quality of this job performed by Halliburton. It is the aim of our management and service personnel to deliver equipment and service of a standard unmatched in the service sector of the energy industry.

Please take the time to let us know if our performance met with your satisfaction. Please be as critical as possible to ensure we constantly improve our service. Your comments are of great value to us and are intended for the exclusive use of Halliburton.

### CUSTOMER SATISFACTION SURVEY

CATEGORY	CUSTOMER SATISFACTION RESPONSE	
Survey Conducted Date	The date the survey was conducted	2/23/2012
Survey Interviewer	The survey interviewer is the person who initiated the survey.	DUSTIN SMITH (HX37079)
Customer Participation	Did the customer participate in this survey? (Y/N)	Yes
Customer Representative	Enter the Customer representative name	RON TOWERS
HSE	Was our HSE performance satisfactory? Circle Y or N	Yes
Equipment	Were you satisfied with our Equipment? Circle Y or N	Yes
Personnel	Were you satisfied with our people? Circle Y or N	Yes
Customer Comment	Customer's Comment	

CUSTOMER SIGNATURE

<b>Sales Order #:</b> 305700	<b>Line Item:</b> 10	<b>Survey Conducted Date:</b> 2/23/2012
<b>Customer:</b> WPX ENERGY ROCKY MOUNTAIN LLC-EBUS		<b>Job Type (BOM):</b> CMT SURFACE CASING BOM
<b>Customer Representative:</b> RON TOWERS		<b>API / UWI: (leave blank if unknown)</b> 05-045-20827
<b>Well Name:</b> SG		<b>Well Number:</b> 11-23
<b>Well Type:</b> Development Well	<b>Well Country:</b> United States of America	
<b>H2S Present:</b>	<b>Well State:</b> Colorado	<b>Well County:</b> Garfield

**KEY PERFORMANCE INDICATORS**

General	
<b>Survey Conducted Date</b> The date the survey was conducted	2/23/2012

Cementing KPI Survey	
<b>Type of Job</b> Select the type of job: Cementing or Non-Cementing	0
<b>Select the Maximum Deviation range for this Job</b> What is the biggest deviation for the job you just completed? This may not be the maximum well deviation	Vertical
<b>Total Operating Time (hours)</b> Total Operating Hours Including Rig-up/Pumping/Rig-down. Enter in decimal format	3
<b>HSE Incident/Accident/Injury</b> HSE Incident/Accident/Injury. This should be recordable incidents only	No
<b>Was the job purpose achieved?</b> Was the job delivered correctly as per customer agreed design	Yes
<b>Operating Hours (Pumping Hours)</b> Total number of hours pumping fluid on this job. Enter in decimal format	1
<b>Customer Non-Productive Rig Time (hrs)</b> Lost time due to Halliburton in the start/execution or completion of an ordered service or product or delays in a follow-on service. Enter in decimal format: 0 if none	0
<b>Type of Rig Classification Job Was Performed</b> Type Of Rig Classification Job Was Performed On	Drilling Rig Portable
<b>Number Of JSAs Performed</b> Number Of Jsas Performed	
<b>Number of Unplanned Shutdowns</b> Unplanned shutdown is when injection stops for an period of time	0
<b>Was this a Primary Cement Job (Yes / No)</b>	Yes

<b>Sales Order #:</b> 305700	<b>Line Item:</b> 10	<b>Survey Conducted Date:</b> 2/23/2012
<b>Customer:</b> WPX ENERGY ROCKY MOUNTAIN LLC-EBUS		<b>Job Type (BOM):</b> CMT SURFACE CASING BOM
<b>Customer Representative:</b> RON TOWERS		<b>API / UWI: (leave blank if unknown)</b> 05-045-20827
<b>Well Name:</b> SG		<b>Well Number:</b> 11-23
<b>Well Type:</b> Development Well	<b>Well Country:</b> United States of America	
<b>H2S Present:</b>	<b>Well State:</b> Colorado	<b>Well County:</b> Garfield

Primary Cement Job <input type="checkbox"/> Casing Job <input type="checkbox"/> Liner Job <input type="checkbox"/> or Tie-back Job <input type="checkbox"/>	
<b>Did We Run Wiper Plugs?</b> Did We Run Top And Bottom Casing Wiper Plugs <input type="checkbox"/>	Top
<b>Minimum Density of Job Stayed in Designed Density Range (0-100%)</b> Density Range defined as +/- 20 ppg. Calculation: Total BBLs cement mixed at designed density divided by total BBLs of cement multiplied by 100	0
<b>Was Automated Density Control Used?</b> Was Automated Density Control (ADC) Used <input type="checkbox"/>	Yes
<b>Pump Rate (percent) of Job Stayed At Designed Pump Rate</b> Pump Rate range defined as +/- 1 bbl/min. Calculation: Total BBLs of fluid pumped at the designed rate divided by Total BBLs of fluid pumped multiplied by 100	0
<b>Number of Remedial Square Jobs Required After Primary Job Performed Because of Competition</b> Number Of Remedial Square Jobs Required After Primary Job Performed Because of Competition	0
<b>Number of Remedial Plug Jobs Required Because of HES</b> Number Of Remedial Plug Jobs Needed After Primary Plug Pumped Because of HES	0
<b>Number of Remedial Square Jobs Required Because of HES</b> Number Of Remedial Square Jobs Required After Primary Job Performed Because of HES	0