

KERR-MCGEE OIL & GAS ONSHORE LP

Location:	COLORADO	Slot:	SLOT#03 CANNON 13N-11HZ (610'FNL & 660'FWL, SE.C11)
Field:	WELD COUNTY (KERR MCGEE)	Well:	CANNON 13N-11HZ
Facility:	SEC.11-T2N-R66W	Wellbore:	CANNON 13N-11HZ PWB

Plot reference wellpath is CANNON 13N-11HZ (REV-C.0) PWP

True vertical depths are referenced to XTREME 8 (RKB)

Grid System: NAD83 / Lambert Colorado SP, Northern Zone (501), US feet

Measured depths are referenced to XTREME 8 (RKB)

North Reference: True north

XTREME 8 (RKB) to Mean Sea Level: 5059 feet

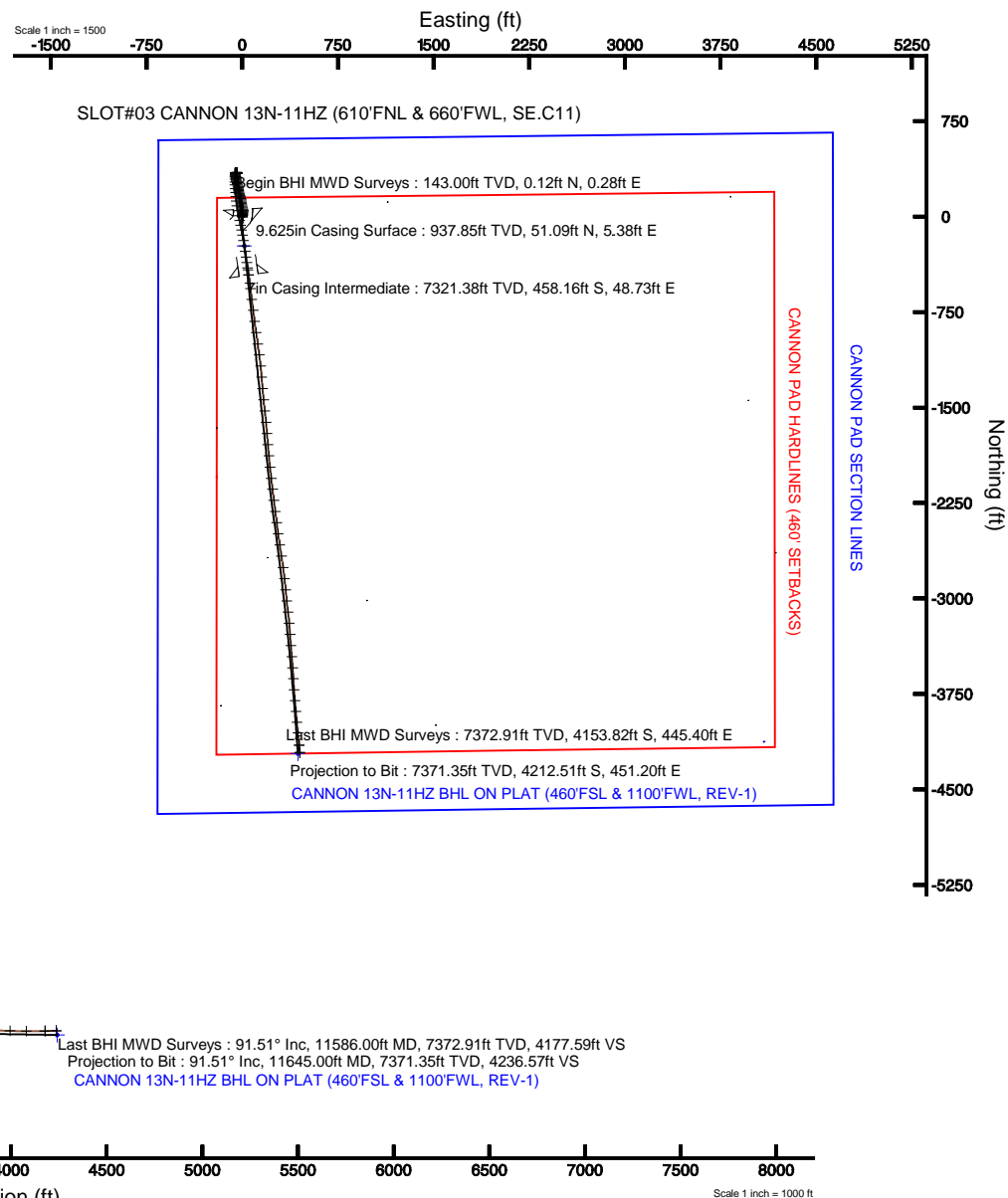
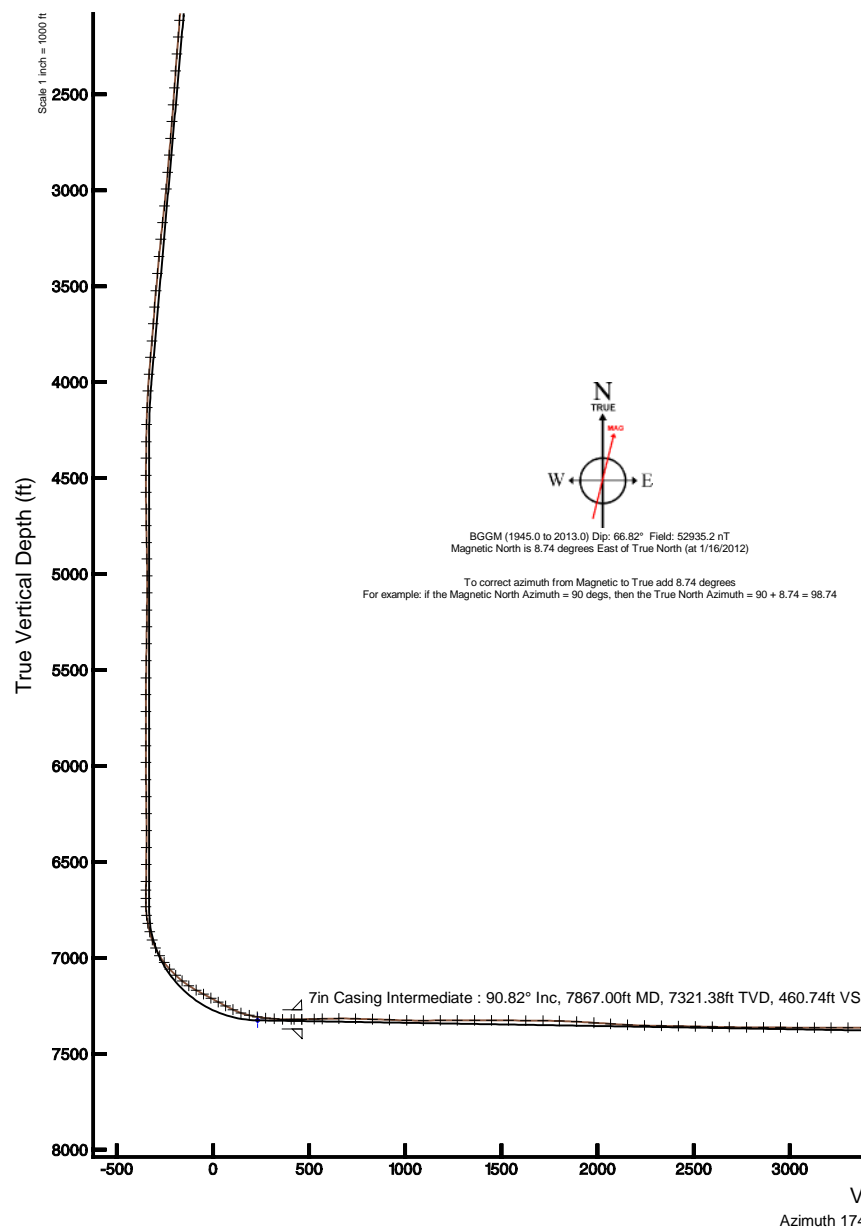
Scale: True distance

Mean Sea Level to Mud line (At Slot: SLOT#03 CANNON 13N-11HZ (610'FNL & 660'FWL, SE.C11)): 0 feet

Depths are in feet

Coordinates are in feet referenced to Slot

Created by: wilsjef02 on 2/27/2012





Actual Wellpath Report

CANNON 13N-11HZ AWP

Page 1 of 6



REFERENCE WELLPATH IDENTIFICATION

Operator	KERR-MCGEE OIL & GAS ONSHORE LP	Slot	SLOT#03 CANNON 13N-11HZ (610'FNL & 660'FWL, SE.C11)
Area	COLORADO	Well	CANNON 13N-11HZ
Field	WELD COUNTY (KERR MCGEE)	Wellbore	CANNON 13N-11HZ AWB
Facility	SEC.11-T2N-R66W		

REPORT SETUP INFORMATION

Projection System	NAD83 / Lambert Colorado SP, Northern Zone (501), US feet	Software System	WellArchitect® 3.0.2
North Reference	True	User	Wilsjef02
Scale	0.999958	Report Generated	2/27/2012 at 10:12:53
Convergence at slot	0.48° East	Database/Source file	WellArchitectDB/CANNON_13N-11HZ_AWB.xml

WELLPATH LOCATION

	Local coordinates		Grid coordinates		Geographic coordinates	
	North[ft]	East[ft]	Easting[US ft]	Northing[US ft]	Latitude	Longitude
Slot Location	4127.92	-4089.62	3209223.83	1301402.70	40°09'29.956"N	104°45'05.166"W
Facility Reference Pt			3213348.65	1297310.31	40°08'49.167"N	104°44'12.494"W
Field Reference Pt			3197771.84	1268891.29	40°04'09.600"N	104°47'36.000"W

WELLPATH DATUM

Calculation method	Minimum curvature	XTREME 8 (RKB) to Facility Vertical Datum	5059.00ft
Horizontal Reference Pt	Slot	XTREME 8 (RKB) to Mean Sea Level	5059.00ft
Vertical Reference Pt	XTREME 8 (RKB)	XTREME 8 (RKB) to Mud Line at Slot (SLOT#03 CANNON 13N-11HZ (610'FNL & 660'FWL, SE.C11))	5059.00ft
MD Reference Pt	XTREME 8 (RKB)	Section Origin	N 0.00, E 0.00 ft
Field Vertical Reference	Mean Sea Level	Section Azimuth	174.11°



Actual Wellpath Report

CANNON 13N-11HZ AWP

Page 2 of 6



REFERENCE WELLPATH IDENTIFICATION

Operator	KERR-MCGEE OIL & GAS ONSHORE LP	Slot	SLOT#03 CANNON 13N-11HZ (610'FNL & 660'FWL, SE.C11)
Area	COLORADO	Well	CANNON 13N-11HZ
Field	WELD COUNTY (KERR MCGEE)	Wellbore	CANNON 13N-11HZ AWB
Facility	SEC.11-T2N-R66W		

WELLPATH DATA (150 stations) † = interpolated/extrapolated station

MD [ft]	Inclination [°]	Azimuth [°]	TVD [ft]	Vert Sect [ft]	North [ft]	East [ft]	Latitude	Longitude	DLS [°/100ft]	Comments
0.00†	0.000	66.740	0.00	0.00	0.00	0.00	40°09'29.956"N	104°45'05.166"W	0.00	
17.00	0.000	66.740	17.00	0.00	0.00	0.00	40°09'29.956"N	104°45'05.166"W	0.00	
143.00	0.280	66.740	143.00	-0.09	0.12	0.28	40°09'29.957"N	104°45'05.162"W	0.22	Begin BHI MWD Surveys
236.00	0.590	16.820	236.00	-0.60	0.67	0.63	40°09'29.963"N	104°45'05.158"W	0.50	
331.00	1.580	13.020	330.98	-2.29	2.41	1.07	40°09'29.980"N	104°45'05.152"W	1.04	
421.00	2.940	8.300	420.91	-5.70	5.91	1.68	40°09'30.014"N	104°45'05.144"W	1.52	
508.00	3.960	2.460	507.75	-10.84	11.12	2.13	40°09'30.066"N	104°45'05.139"W	1.24	
596.00	4.720	3.410	595.50	-17.42	17.77	2.48	40°09'30.132"N	104°45'05.134"W	0.87	
685.00	5.670	7.680	684.13	-25.31	25.78	3.28	40°09'30.211"N	104°45'05.124"W	1.15	
772.00	5.840	8.540	770.69	-33.77	34.42	4.51	40°09'30.296"N	104°45'05.108"W	0.22	
859.00	5.930	4.260	857.23	-42.48	43.27	5.50	40°09'30.384"N	104°45'05.095"W	0.51	
890.00	5.440	359.950	888.08	-45.52	46.34	5.62	40°09'30.414"N	104°45'05.094"W	2.10	
963.00	5.540	351.720	960.75	-52.48	53.29	5.11	40°09'30.483"N	104°45'05.100"W	1.09	
1054.00	5.850	353.120	1051.30	-61.51	62.24	3.92	40°09'30.571"N	104°45'05.115"W	0.37	
1144.00	6.750	340.730	1140.76	-71.24	71.79	1.63	40°09'30.665"N	104°45'05.145"W	1.81	
1235.00	7.660	346.000	1231.04	-82.45	82.72	-1.60	40°09'30.773"N	104°45'05.187"W	1.23	
1326.00	6.090	347.380	1321.38	-93.25	93.32	-4.13	40°09'30.878"N	104°45'05.219"W	1.73	
1418.00	6.410	352.320	1412.83	-103.23	103.17	-5.88	40°09'30.976"N	104°45'05.242"W	0.68	
1508.00	6.490	354.210	1502.27	-113.33	113.21	-7.06	40°09'31.075"N	104°45'05.257"W	0.25	
1598.00	7.050	354.010	1591.64	-123.94	123.76	-8.15	40°09'31.179"N	104°45'05.271"W	0.62	
1685.00	6.150	350.540	1678.06	-133.93	133.67	-9.48	40°09'31.277"N	104°45'05.288"W	1.13	
1773.00	6.940	346.230	1765.49	-143.90	143.48	-11.52	40°09'31.374"N	104°45'05.314"W	1.06	
1862.00	5.220	343.530	1853.98	-153.21	152.59	-13.94	40°09'31.464"N	104°45'05.346"W	1.96	
1949.00	5.090	338.270	1940.63	-160.81	159.97	-16.49	40°09'31.537"N	104°45'05.378"W	0.56	
2036.00	4.940	337.690	2027.30	-168.12	167.02	-19.35	40°09'31.606"N	104°45'05.415"W	0.18	
2123.00	4.770	339.230	2113.99	-175.21	173.86	-22.05	40°09'31.674"N	104°45'05.450"W	0.25	
2209.00	4.470	335.610	2199.71	-181.84	180.26	-24.70	40°09'31.737"N	104°45'05.484"W	0.49	
2298.00	4.740	350.590	2288.42	-188.80	187.05	-26.74	40°09'31.804"N	104°45'05.510"W	1.38	
2387.00	4.220	352.880	2377.15	-195.75	193.92	-27.74	40°09'31.872"N	104°45'05.523"W	0.62	
2476.00	3.880	353.660	2465.93	-202.03	200.17	-28.48	40°09'31.934"N	104°45'05.533"W	0.39	
2564.00	4.130	352.930	2553.71	-208.18	206.27	-29.20	40°09'31.994"N	104°45'05.542"W	0.29	
2652.00	4.410	341.140	2641.47	-214.64	212.62	-30.68	40°09'32.057"N	104°45'05.561"W	1.04	
2740.00	4.680	357.270	2729.20	-221.52	219.40	-31.95	40°09'32.124"N	104°45'05.577"W	1.48	
2827.00	5.300	350.000	2815.87	-229.08	226.91	-32.82	40°09'32.198"N	104°45'05.589"W	1.02	
2917.00	4.540	346.500	2905.54	-236.75	234.46	-34.37	40°09'32.273"N	104°45'05.609"W	0.91	
3004.00	6.110	342.630	2992.16	-244.70	242.23	-36.55	40°09'32.350"N	104°45'05.637"W	1.85	
3094.00	6.420	342.940	3081.62	-254.33	251.61	-39.46	40°09'32.442"N	104°45'05.674"W	0.35	
3180.00	6.250	342.160	3167.10	-263.63	260.67	-42.31	40°09'32.532"N	104°45'05.711"W	0.22	
3268.00	5.870	349.000	3254.60	-272.80	269.64	-44.63	40°09'32.621"N	104°45'05.741"W	0.93	
3358.00	5.630	350.700	3344.15	-281.79	278.52	-46.22	40°09'32.708"N	104°45'05.761"W	0.33	
3447.00	5.040	349.370	3432.77	-290.04	286.67	-47.65	40°09'32.789"N	104°45'05.780"W	0.68	
3537.00	5.000	354.170	3522.42	-297.91	294.46	-48.78	40°09'32.866"N	104°45'05.794"W	0.47	
3624.00	4.640	354.030	3609.11	-305.22	301.73	-49.53	40°09'32.938"N	104°45'05.804"W	0.41	
3711.00	4.090	347.710	3695.86	-311.82	308.26	-50.56	40°09'33.002"N	104°45'05.817"W	0.84	
3800.00	4.990	349.490	3784.58	-318.83	315.17	-51.94	40°09'33.070"N	104°45'05.835"W	1.02	
3886.00	4.940	348.110	3870.26	-326.24	322.47	-53.38	40°09'33.143"N	104°45'05.854"W	0.15	
3974.00	4.350	350.540	3957.97	-333.34	329.47	-54.71	40°09'33.212"N	104°45'05.871"W	0.71	
4061.00	3.730	349.500	4044.75	-339.45	335.50	-55.77	40°09'33.271"N	104°45'05.884"W	0.72	
4149.00	2.220	350.560	4132.63	-344.01	340.00	-56.57	40°09'33.316"N	104°45'05.895"W	1.72	
4237.00	1.530	7.440	4220.58	-346.85	342.85	-56.70	40°09'33.344"N	104°45'05.896"W	1.00	
4327.00	1.400	61.390	4310.56	-348.45	344.56	-55.58	40°09'33.361"N	104°45'05.882"W	1.48	
4413.00	1.210	53.450	4396.54	-349.32	345.61	-53.93	40°09'33.371"N	104°45'05.861"W	0.30	
4503.00	1.230	91.330	4486.52	-349.68	346.15	-52.20	40°09'33.377"N	104°45'05.838"W	0.88	
4591.00	1.650	83.600	4574.49	-349.57	346.27	-49.99	40°09'33.378"N	104°45'05.810"W	0.52	
4677.00	1.890	96.810	4660.45	-349.27	346.24	-47.35	40°09'33.378"N	104°45'05.776"W	0.55	
4764.00	1.400	140.170	4747.42	-348.07	345.25	-45.25	40°09'33.368"N	104°45'05.749"W	1.49	
4852.00	1.160	147.150	4835.39	-346.39	343.68	-44.08	40°09'33.352"N	104°45'05.734"W	0.32	
4938.00	0.930	156.500	4921.38	-344.95	342.31	-43.33	40°09'33.339"N	104°45'05.724"W	0.33	
5026.00	0.320	137.800	5009.37	-344.07	341.47	-42.88	40°09'33.330"N	104°45'05.718"W	0.72	
5115.00	0.280	344.360	5098.37	-344.08	341.50	-42.77	40°09'33.331"N	104°45'05.717"W	0.66	



Actual Wellpath Report

CANNON 13N-11HZ AWP

Page 3 of 6



REFERENCE WELLPATH IDENTIFICATION

Operator	KERR-MCGEE OIL & GAS ONSHORE LP	Slot	SLOT#03 CANNON 13N-11HZ (610'FNL & 660'FWL, SE.C11)
Area	COLORADO	Well	CANNON 13N-11HZ
Field	WELD COUNTY (KERR MCGEE)	Wellbore	CANNON 13N-11HZ AWB
Facility	SEC.11-T2N-R66W		

WELLPATH DATA (150 stations) † = interpolated/extrapolated station

MD [ft]	Inclination [°]	Azimuth [°]	TVD [ft]	Vert Sect [ft]	North [ft]	East [ft]	Latitude	Longitude	DLS [°/100ft]	Comments
5205.00	0.760	317.730	5188.37	-344.78	342.15	-43.23	40°09'33.337"N	104°45'05.723"W	0.58	
5291.00	0.950	332.360	5274.36	-345.90	343.20	-43.94	40°09'33.348"N	104°45'05.732"W	0.33	
5380.00	0.770	349.080	5363.35	-347.18	344.44	-44.40	40°09'33.360"N	104°45'05.738"W	0.34	
5468.00	0.640	340.390	5451.34	-348.25	345.49	-44.68	40°09'33.370"N	104°45'05.741"W	0.19	
5558.00	1.210	342.940	5541.33	-349.67	346.87	-45.12	40°09'33.384"N	104°45'05.747"W	0.63	
5646.00	0.360	73.300	5629.32	-350.63	347.84	-45.13	40°09'33.393"N	104°45'05.747"W	1.44	
5734.00	0.260	128.970	5717.32	-350.54	347.79	-44.71	40°09'33.393"N	104°45'05.742"W	0.34	
5823.00	0.440	216.350	5806.32	-350.15	347.39	-44.76	40°09'33.389"N	104°45'05.742"W	0.56	
5913.00	0.250	268.730	5896.32	-349.91	347.11	-45.16	40°09'33.386"N	104°45'05.748"W	0.39	
5999.00	0.680	295.170	5982.32	-350.19	347.32	-45.81	40°09'33.388"N	104°45'05.756"W	0.55	
6089.00	0.820	162.450	6072.31	-349.83	346.93	-46.10	40°09'33.384"N	104°45'05.760"W	1.53	
6178.00	0.830	164.940	6161.31	-348.57	345.70	-45.74	40°09'33.372"N	104°45'05.755"W	0.04	
6266.00	0.440	105.430	6249.30	-347.82	345.00	-45.25	40°09'33.365"N	104°45'05.749"W	0.81	
6355.00	0.640	264.490	6338.30	-347.70	344.86	-45.41	40°09'33.364"N	104°45'05.751"W	1.19	
6443.00	0.830	270.810	6426.29	-347.78	344.82	-46.54	40°09'33.364"N	104°45'05.765"W	0.23	
6531.00	1.590	289.200	6514.27	-348.37	345.23	-48.33	40°09'33.368"N	104°45'05.788"W	0.96	
6620.00	1.920	280.990	6603.23	-349.32	345.92	-50.96	40°09'33.374"N	104°45'05.822"W	0.47	
6664.00	2.160	287.720	6647.20	-349.87	346.31	-52.47	40°09'33.378"N	104°45'05.842"W	0.77	
6708.00	2.070	286.810	6691.17	-350.51	346.80	-54.02	40°09'33.383"N	104°45'05.862"W	0.22	
6752.00	2.730	207.650	6735.14	-349.94	346.10	-55.27	40°09'33.376"N	104°45'05.878"W	7.05	
6796.00	6.750	184.110	6778.99	-346.52	342.59	-55.94	40°09'33.341"N	104°45'05.886"W	9.96	
6839.00	10.290	185.790	6821.51	-340.27	336.25	-56.51	40°09'33.279"N	104°45'05.894"W	8.25	
6884.00	14.480	184.750	6865.45	-330.80	326.64	-57.38	40°09'33.184"N	104°45'05.905"W	9.32	
6929.00	19.750	183.380	6908.44	-317.76	313.43	-58.30	40°09'33.053"N	104°45'05.917"W	11.74	
6974.00	25.610	183.220	6949.94	-300.64	296.11	-59.29	40°09'32.882"N	104°45'05.930"W	13.02	
7019.00	30.940	180.040	6989.56	-279.51	274.82	-59.85	40°09'32.672"N	104°45'05.937"W	12.30	
7062.00	37.150	177.310	7025.18	-255.53	250.77	-59.24	40°09'32.434"N	104°45'05.929"W	14.87	
7107.00	42.600	174.580	7059.70	-226.71	222.01	-57.17	40°09'32.150"N	104°45'05.902"W	12.72	
7151.00	45.910	175.960	7091.21	-196.01	191.42	-54.65	40°09'31.848"N	104°45'05.870"W	7.83	
7196.00	51.290	175.350	7120.96	-162.28	157.77	-52.08	40°09'31.515"N	104°45'05.837"W	12.00	
7239.00	56.620	173.560	7146.25	-127.53	123.18	-48.71	40°09'31.173"N	104°45'05.793"W	12.84	
7284.00	61.120	170.600	7169.52	-89.05	85.05	-43.38	40°09'30.796"N	104°45'05.725"W	11.47	
7327.00	62.000	169.650	7190.00	-51.33	47.80	-36.89	40°09'30.428"N	104°45'05.641"W	2.82	
7372.00	62.070	169.490	7211.10	-11.71	8.71	-29.70	40°09'30.042"N	104°45'05.548"W	0.35	
7415.00	62.010	168.100	7231.26	26.10	-28.54	-22.32	40°09'29.674"N	104°45'05.453"W	2.86	
7458.00	61.750	168.270	7251.53	63.82	-65.66	-14.55	40°09'29.307"N	104°45'05.353"W	0.70	
7502.00	65.310	168.060	7271.13	102.99	-104.21	-6.47	40°09'28.926"N	104°45'05.249"W	8.10	
7547.00	70.460	169.120	7288.07	144.48	-145.06	1.77	40°09'28.523"N	104°45'05.143"W	11.65	
7592.00	76.540	170.520	7300.85	187.48	-187.51	9.38	40°09'28.103"N	104°45'05.045"W	13.84	
7635.00	81.040	171.360	7309.20	229.58	-229.15	16.02	40°09'27.692"N	104°45'04.960"W	10.64	
7678.00	84.130	171.760	7314.75	272.18	-271.32	22.27	40°09'27.275"N	104°45'04.879"W	7.24	
7723.00	84.670	172.100	7319.14	316.93	-315.67	28.56	40°09'26.837"N	104°45'04.798"W	1.42	
7767.00	88.920	171.890	7321.60	360.82	-359.16	34.68	40°09'26.407"N	104°45'04.719"W	9.67	
7811.00	90.120	172.020	7321.97	404.79	-402.72	40.84	40°09'25.976"N	104°45'04.640"W	2.74	
7826.00	90.580	171.830	7321.88	419.78	-417.57	42.94	40°09'25.830"N	104°45'04.613"W	3.32	
7867.00†	90.822	171.947	7321.38	460.74	-458.16	48.73	40°09'25.428"N	104°45'04.538"W	0.66	7" Casing Point
7931.00	91.200	172.130	7320.25	524.69	-521.53	57.59	40°09'24.802"N	104°45'04.424"W	0.66	
7974.00	91.320	172.320	7319.30	567.66	-564.13	63.41	40°09'24.381"N	104°45'04.349"W	0.52	
8060.00	90.770	173.020	7317.73	653.61	-649.41	74.38	40°09'23.538"N	104°45'04.208"W	1.04	
8147.00	88.210	172.760	7318.51	740.58	-735.73	85.14	40°09'22.685"N	104°45'04.069"W	2.96	
8235.00	88.240	173.000	7321.23	828.52	-823.01	96.04	40°09'21.823"N	104°45'03.929"W	0.27	
8324.00	87.690	171.360	7324.39	917.41	-911.12	108.15	40°09'20.952"N	104°45'03.773"W	1.94	
8413.00	88.640	172.160	7327.24	1006.29	-999.16	120.89	40°09'20.082"N	104°45'03.609"W	1.40	
8500.00	90.250	172.830	7328.09	1093.25	-1085.41	132.26	40°09'19.230"N	104°45'03.463"W	2.00	
8589.00	90.800	173.940	7327.27	1182.23	-1173.81	142.51	40°09'18.356"N	104°45'03.331"W	1.39	
8677.00	90.000	174.870	7326.66	1270.23	-1261.38	151.09	40°09'17.491"N	104°45'03.220"W	1.39	
8767.00	90.150	175.310	7326.54	1360.22	-1351.05	158.79	40°09'16.605"N	104°45'03.121"W	0.52	
8855.00	89.320	174.020	7326.95	1448.21	-1438.67	166.97	40°09'15.739"N	104°45'03.016"W	1.74	
8943.00	89.940	173.900	7327.52	1536.21	-1526.18	176.23	40°09'14.874"N	104°45'02.896"W	0.72	
9032.00	89.140	174.380	7328.23	1625.20	-1614.71	185.32	40°09'13.999"N	104°45'02.779"W	1.05	



Actual Wellpath Report

CANNON 13N-11HZ AWP

Page 4 of 6



REFERENCE WELLPATH IDENTIFICATION

Operator	KERR-MCGEE OIL & GAS ONSHORE LP	Slot	SLOT#03 CANNON 13N-11HZ (610'FNL & 660'FWL, SE.C11)
Area	COLORADO	Well	CANNON 13N-11HZ
Field	WELD COUNTY (KERR MCGEE)	Wellbore	CANNON 13N-11HZ AWB
Facility	SEC.11-T2N-R66W		

WELLPATH DATA (150 stations)

MD [ft]	Inclination [°]	Azimuth [°]	TVD [ft]	Vert Sect [ft]	North [ft]	East [ft]	Latitude	Longitude	DLS [°/100ft]	Comments
9122.00	89.720	175.670	7329.13	1715.18	-1704.36	193.12	40°09'13.113"N	104°45'02.679"W	1.57	
9208.00	88.580	175.410	7330.40	1801.15	-1790.09	199.81	40°09'12.266"N	104°45'02.593"W	1.36	
9297.00	86.670	174.350	7334.09	1890.06	-1878.66	207.74	40°09'11.391"N	104°45'02.491"W	2.45	
9387.00	86.460	173.730	7339.48	1979.89	-1968.01	217.07	40°09'10.508"N	104°45'02.370"W	0.73	
9475.00	86.030	173.320	7345.24	2067.70	-2055.26	226.97	40°09'09.646"N	104°45'02.243"W	0.67	
9563.00	87.070	173.570	7350.54	2155.53	-2142.52	237.00	40°09'08.783"N	104°45'02.114"W	1.22	
9651.00	88.580	173.010	7353.88	2243.46	-2229.85	247.28	40°09'07.920"N	104°45'01.982"W	1.83	
9739.00	88.890	172.870	7355.82	2331.42	-2317.17	258.09	40°09'07.058"N	104°45'01.842"W	0.39	
9828.00	89.170	172.280	7357.33	2420.37	-2405.41	269.59	40°09'06.186"N	104°45'01.694"W	0.73	
9916.00	88.920	172.330	7358.80	2508.32	-2492.60	281.37	40°09'05.324"N	104°45'01.542"W	0.29	
10005.00	88.860	171.730	7360.52	2597.24	-2580.73	293.71	40°09'04.453"N	104°45'01.384"W	0.68	
10093.00	88.800	171.260	7362.32	2685.13	-2667.74	306.72	40°09'03.593"N	104°45'01.216"W	0.54	
10183.00	89.480	172.100	7363.67	2775.04	-2756.78	319.74	40°09'02.713"N	104°45'01.048"W	1.20	
10271.00	90.520	173.980	7363.67	2863.02	-2844.13	330.41	40°09'01.850"N	104°45'00.911"W	2.44	
10360.00	88.920	174.220	7364.10	2952.01	-2932.65	339.55	40°09'00.975"N	104°45'00.793"W	1.82	
10448.00	90.250	174.240	7364.74	3040.01	-3020.20	348.40	40°09'00.110"N	104°45'00.679"W	1.51	
10536.00	89.010	173.220	7365.31	3128.00	-3107.67	358.01	40°08'59.246"N	104°45'00.556"W	1.82	
10623.00	89.910	174.760	7366.13	3215.00	-3194.19	367.12	40°08'58.391"N	104°45'00.438"W	2.05	
10711.00	90.680	175.810	7365.68	3302.97	-3281.88	374.35	40°08'57.524"N	104°45'00.345"W	1.48	
10800.00	89.120	175.650	7365.83	3391.94	-3370.63	380.98	40°08'56.647"N	104°45'00.260"W	1.76	
10887.00	89.260	175.380	7367.06	3478.90	-3457.36	387.78	40°08'55.790"N	104°45'00.172"W	0.35	
10976.00	89.750	175.960	7367.83	3567.86	-3546.10	394.50	40°08'54.913"N	104°45'00.086"W	0.85	
11062.00	91.170	176.610	7367.14	3653.80	-3631.91	400.07	40°08'54.065"N	104°45'00.014"W	1.82	
11148.00	89.970	175.650	7366.28	3739.74	-3717.71	405.88	40°08'53.217"N	104°44'59.939"W	1.79	
11233.00	88.430	175.050	7367.47	3824.70	-3802.42	412.77	40°08'52.380"N	104°44'59.851"W	1.94	
11319.00	88.520	175.070	7369.76	3910.66	-3888.07	420.17	40°08'51.534"N	104°44'59.755"W	0.11	
11404.00	88.280	174.510	7372.13	3995.62	-3972.69	427.88	40°08'50.698"N	104°44'59.656"W	0.72	
11489.00	89.510	174.530	7373.77	4080.60	-4057.28	436.00	40°08'49.862"N	104°44'59.551"W	1.45	
11586.00	91.510	174.350	7372.91	4177.59	-4153.82	445.40	40°08'48.908"N	104°44'59.430"W	2.07	Last BHI MWD Surveys
11645.00	91.510	174.350	7371.35	4236.57	-4212.51	451.20	40°08'48.328"N	104°44'59.356"W	0.00	Projection to Bit

HOLE & CASING SECTIONS - Ref Wellbore: CANNON 13N-11HZ AWB Ref Wellpath: CANNON 13N-11HZ AWP

String/Diameter	Start MD [ft]	End MD [ft]	Interval [ft]	Start TVD [ft]	End TVD [ft]	Start N/S [ft]	Start E/W [ft]	End N/S [ft]	End E/W [ft]
13.5in Open Hole	17.00	940.00	923.00	17.00	937.85	0.00	0.00	51.09	5.38
9.625in Casing Surface	17.00	940.00	923.00	17.00	937.85	0.00	0.00	51.09	5.38
8.75in Open Hole	940.00	7871.00	6931.00	937.85	7321.32	51.09	5.38	-462.12	49.29
7in Casing Intermediate	17.00	7867.00	7850.00	17.00	7321.38	0.00	0.00	-458.16	48.73
6.125in Open Hole	7867.00	11645.00	3778.00	7321.38	7371.35	-458.16	48.73	-4212.51	451.20



Actual Wellpath Report

CANNON 13N-11HZ AWP

Page 5 of 6



REFERENCE WELLPATH IDENTIFICATION

Operator	KERR-MCGEE OIL & GAS ONSHORE LP	Slot	SLOT#03 CANNON 13N-11HZ (610'FNL & 660'FWL, SE.C11)
Area	COLORADO	Well	CANNON 13N-11HZ
Field	WELD COUNTY (KERR MCGEE)	Wellbore	CANNON 13N-11HZ AWB
Facility	SEC.11-T2N-R66W		

TARGETS

Name	MD [ft]	TVD [ft]	North [ft]	East [ft]	Grid East [US ft]	Grid North [US ft]	Latitude	Longitude	Shape
CANNON PAD SECTION LINES		-15.00	-4127.14	4090.30	3213348.65	1297310.41	40°08'49.168"N	104°44'12.494"W	polygon
CANNON PAD HARDLINES (460' SETBACKS)		7310.00	-4127.14	4090.30	3213348.65	1297310.41	40°08'49.168"N	104°44'12.494"W	polygon
CANNON 13N-11HZ LP		7327.00	-229.91	15.34	3209241.11	1301172.93	40°09'27.684"N	104°45'04.968"W	point
CANNON 13N-11HZ BHL ON PLAT (460'FSL & 1100'FWL, REV-1)		7394.00	-4218.95	435.26	3209694.68	1297187.75	40°08'48.264"N	104°44'59.561"W	point

WELLPATH COMPOSITION - Ref Wellbore: CANNON 13N-11HZ AWB Ref Wellpath: CANNON 13N-11HZ AWP

Start MD [ft]	End MD [ft]	Positional Uncertainty Model	Log Name/Comment	Wellbore
17.00	890.00	NaviTrak (Standard)	BHI MWD SURVEYS 13 1/2" HOLE <143-890>	CANNON 13N-11HZ AWB
890.00	7826.00	NaviTrak (Standard)	BHI MWD SURVEYS 8 3/4" HOLE <963-7826>	CANNON 13N-11HZ AWB
7826.00	11586.00	NaviTrak (Standard)	BHI MWD SURVEYS 6 1/8" HOLE <79361-11586>	CANNON 13N-11HZ AWB
11586.00	11645.00	Blind Drilling (std)	Projection to bit	CANNON 13N-11HZ AWB



Actual Wellpath Report

CANNON 13N-11HZ AWP

Page 6 of 6



REFERENCE WELLPATH IDENTIFICATION

Operator	KERR-MCGEE OIL & GAS ONSHORE LP	Slot	SLOT#03 CANNON 13N-11HZ (610'FNL & 660'FWL, SE.C11)
Area	COLORADO	Well	CANNON 13N-11HZ
Field	WELD COUNTY (KERR MCGEE)	Wellbore	CANNON 13N-11HZ AWB
Facility	SEC.11-T2N-R66W		

WELLPATH COMMENTS

MD [ft]	Inclination [°]	Azimuth [°]	TVD [ft]	Comment
143.00	0.280	66.740	143.00	Begin BHI MWD Surveys
7867.00	90.822	171.947	7321.38	7" Casing Point
11586.00	91.510	174.350	7372.91	Last BHI MWD Surveys
11645.00	91.510	174.350	7371.35	Projection to Bit