
WPX ENERGY ROCKY MOUNTAIN

**SG 322-23
GRAND VALLEY
Garfield County , Colorado**

Cement Surface Casing **13-Feb-2012**

Post Job Report

The Road to Excellence Starts with Safety

Sold To #: 300721		Ship To #: 300721		Quote #:		Sales Order #: 9260325	
Customer: WPX ENERGY ROCKY MOUNTAIN LLC-EBUS				Customer Rep: Schults, Mike			
Well Name: SG			Well #: 322-23			API/UWI #:	
Field: GRAND VALLEY		City (SAP): TULSA		County/Parish: Garfield			State: Colorado
Lat: N 39.427 deg. OR N 39 deg. 25 min. 37.2 secs.				Long: W 108.082 deg. OR W -109 deg. 55 min. 4.8 secs.			
Contractor: H&P 271			Rig/Platform Name/Num: H&P 271				
Job Purpose: Cement Surface Casing							
Well Type: Development Well			Job Type: Cement Surface Casing				
Sales Person: SCOTT, KYLE			Srv Supervisor: MAGERS, MICHAEL			MBU ID Emp #: 339439	

Job Personnel

HES Emp Name	Exp Hrs	Emp #	HES Emp Name	Exp Hrs	Emp #	HES Emp Name	Exp Hrs	Emp #
BORSZICH, STEPHEN A	6	412388	MAGERS, MICHAEL Gerard	6	339439	RAMSEY, STANTON Michael	6	477609
WADE, LOGAN D	6	488896						

Equipment

HES Unit #	Distance-1 way	HES Unit #	Distance-1 way	HES Unit #	Distance-1 way	HES Unit #	Distance-1 way
10001431	60 mile	10872429	60 mile	10969711	60 mile	11259886	60 mile
11360883	60 mile						

Job Hours

Date	On Location Hours	Operating Hours	Date	On Location Hours	Operating Hours	Date	On Location Hours	Operating Hours
02/13/2012	6	1						

TOTAL	Total is the sum of each column separately							
-------	--	--	--	--	--	--	--	--

Job

Formation Name					Date	Time	Time Zone
Formation Depth (MD)	Top		Bottom		Called Out	13 - Feb - 2012	00:10 MST
Form Type	BHST				On Location	13 - Feb - 2012	06:00 MST
Job depth MD	1022. ft		Job Depth TVD	1022. ft	Job Started	13 - Feb - 2012	10:58 MST
Water Depth			Wk Ht Above Floor	3. ft	Job Completed	13 - Feb - 2012	11:48 MST
Perforation Depth (MD)	From		To		Departed Loc	13 - Feb - 2012	12:30 MST

Well Data

Description	New / Used	Max pressure psig	Size in	ID in	Weight lbm/ft	Thread	Grade	Top MD ft	Bottom MD ft	Top TVD ft	Bottom TVD ft
-------------	------------	-------------------	---------	-------	---------------	--------	-------	-----------	--------------	------------	---------------

Sales/Rental/3rd Party (HES)

Description	Qty	Qty uom	Depth	Supplier
PLUG,CMTG,TOP,9 5/8,HWE,8.16 MIN/9.06 MA	1	EA		

Tools and Accessories

Type	Size	Qty	Make	Depth	Type	Size	Qty	Make	Depth	Type	Size	Qty	Make
Guide Shoe					Packer					Top Plug	9.625	1	HES
Float Shoe					Bridge Plug					Bottom Plug			
Float Collar					Retainer					SSR plug set			
Insert Float										Plug Container	9.625	1	HES
Stage Tool										Centralizers			

Miscellaneous Materials

Gelling Agt	Conc	Surfactant	Conc	Acid Type	Qty	Conc	%
Treatment Fld	Conc	Inhibitor	Conc	Sand Type	Size	Qty	

Fluid Data

Stage/Plug #: 1									
Fluid #	Stage Type	Fluid Name	Qty	Qty uom	Mixing Density lbm/gal	Yield ft ³ /sk	Mix Fluid Gal/sk	Rate bbl/min	Total Mix Fluid Gal/sk

1	Fresh Water		20.00	bbl	8.33	.0	.0	.0	
2	Tail Cement	VERSACEM (TM) SYSTEM (452010)	280.0	sacks	12.8	2.11	11.75		11.75
	11.75 Gal	FRESH WATER							
3	Displacement Fluid		76.00	bbl	8.34	.0	.0	.0	
Calculated Values		Pressures		Volumes					
Displacement	76	Shut In: Instant		Lost Returns	0	Cement Slurry	105	Pad	
Top Of Cement	SURFACE	5 Min		Cement Returns	30	Actual Displacement	76	Treatment	
Frac Gradient		15 Min		Spacers	20	Load and Breakdown		Total Job	201
Rates									
Circulating	RIG	Mixing	8	Displacement	8	Avg. Job	8		
Cement Left In Pipe	Amount	46 ft	Reason	Shoe Joint					
Frac Ring # 1 @	ID	Frac ring # 2 @	ID	Frac Ring # 3 @	ID	Frac Ring # 4 @	ID		
The Information Stated Herein Is Correct				Customer Representative Signature					

The Road to Excellence Starts with Safety

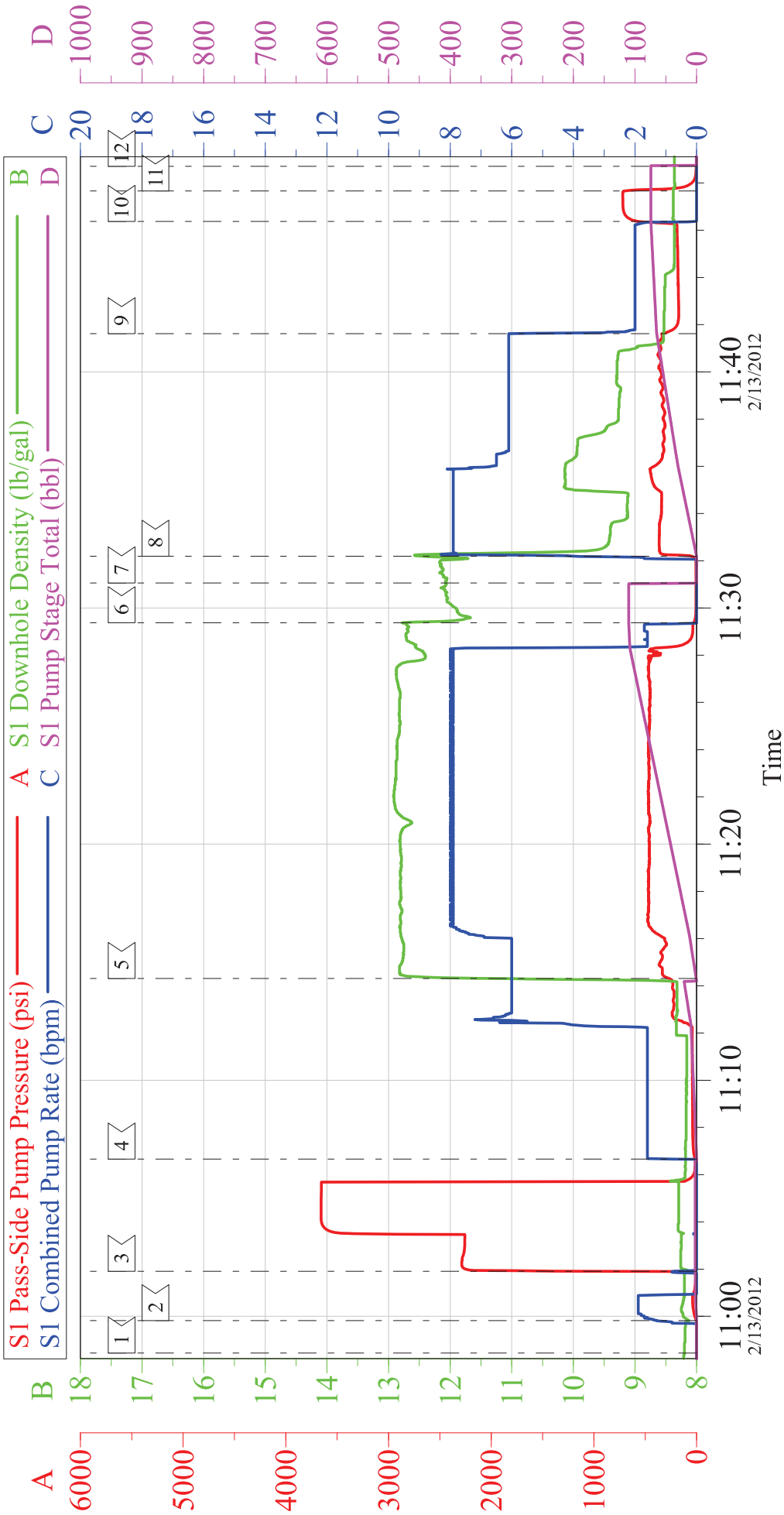
Sold To #: 300721	Ship To #: 300721	Quote #:	Sales Order #: 9260325
Customer: WPX ENERGY ROCKY MOUNTAIN LLC-EBUS		Customer Rep: Schults, Mike	
Well Name: SG		Well #: 322-23	API/UWI #:
Field: GRAND VALLEY	City (SAP): TULSA	County/Parish: Garfield	State: Colorado
Legal Description:			
Lat: N 39.427 deg. OR N 39 deg. 25 min. 37.2 secs.		Long: W 108.082 deg. OR W -109 deg. 55 min. 4.8 secs.	
Contractor: H&P 271		Rig/Platform Name/Num: H&P 271	
Job Purpose: Cement Surface Casing			Ticket Amount:
Well Type: Development Well		Job Type: Cement Surface Casing	
Sales Person: SCOTT, KYLE		Srvc Supervisor: MAGERS, MICHAEL	MBU ID Emp #: 339439

Activity Description	Date/Time	Cht #	Rate bbl/min	Volume bbl		Pressure psig		Comments
				Stage	Total	Tubing	Casing	
Crew Leave Yard	02/13/2012 02:00							HES ALL PRESENT
Arrive At Loc	02/13/2012 06:00							RIG WAS JUST STARTING TO RUN CASING WHEN HES ARRIVED/RIG CIRCULATED WHILE CASERS RIGGED DOWN.
Assessment Of Location Safety Meeting	02/13/2012 06:10							LOCATION VERY MUDDY/RAINING
Pre-Rig Up Safety Meeting	02/13/2012 09:00							JSA ON RIGGING UP
Rig-Up Equipment	02/13/2012 09:10							1 PICKUP 1 ELITE 1 BULK TRUCK
Safety Huddle	02/13/2012 10:40							RIG CREW AND HES ALL PRESENT
Start Job	02/13/2012 10:58							TD-1022 TP-1008 SJ-46 MW-10.3 CSG- 9 5/8 32.3# OH-13 1/2"
Other	02/13/2012 10:59		2	2			40.0	FILL LINES
Pressure Test	02/13/2012 11:01		0.5	0.5			3657.0	PRESSURE TEST OK
Pump Spacer 1	02/13/2012 11:06		4	20			238.0	FRESH WATER SPACER
Pump Tail Cement	02/13/2012 11:14		8	105.2			470.0	VERSACEM 280 SKS 12.8 PPG 2.11 FT3/SK 11.75 GAL/SK
Shutdown	02/13/2012 11:29							
Drop Plug	02/13/2012 11:31							PLUG AWAY NO PROBLEMS
Pump Displacement	02/13/2012 11:32		10	75.7			388.0	PUMP MUD DISPLACEMENT

Cementing Job Log

Activity Description	Date/Time	Cht #	Rate bbl/min	Volume bbl		Pressure psig		Comments
				Stage	Total	Tubing	Casing	
Slow Rate	02/13/2012 11:41		2	65			182.0	GOT 30 BBLS OF CEMENT TO SURFACE
Bump Plug	02/13/2012 11:46		2	75.7			190.0	BUMPED PLUG
Check Floats	02/13/2012 11:47			75.7			720.0	FLOATS HELD/GOT 1/2 BBL BACK INTO TANK
End Job	02/13/2012 11:48							HAD GOOD CIRCULATION THROUGHOUT JOB/THANKS FOR USING HES AND THE CREW OF MIKE MAGERS

WPX ENERGY SG 322-23
SURFACE

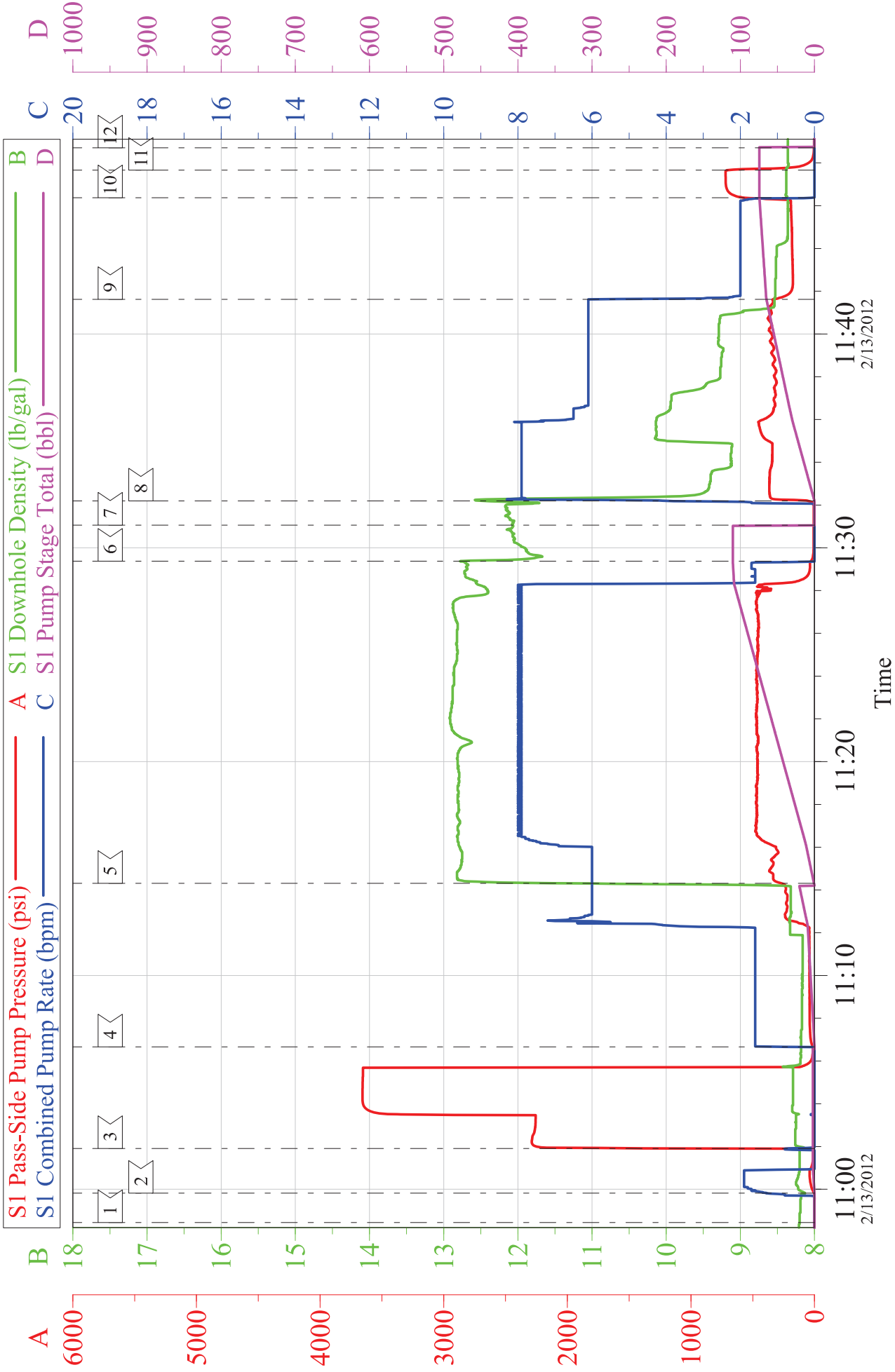


Local Event Log								
1	START JOB	10:58:27	2	FILL LINES	10:59:49	3	PRESSURE TEST	11:01:54
4	PUMP SPACER	11:06:40	5	PUMP TAIL CEMENT	11:14:19	6	SHUT DOWN	11:29:23
7	DROP PLUG	11:31:04	8	PUMP MUD DISPLACEMENT	11:32:12	9	SLOW RATE	11:41:37
10	BUMP PLUG	11:46:22	11	CHECK FLOATS	11:47:40	12	END JOB	11:48:42

Customer:	WPX ENERGY	Job Date:	13-Feb-2012	Sales Order #:	9260325
Well Description:	SG 322-23	Job Type:	SURFACE	ADC Used:	YES
Company Rep:	MIKE SCHULTZ	Cement Supervisor:	MIKE MAGERS	Elite #7:	STEVE BORSZICH

WPX ENERGY SG 322-23

SURFACE



Customer: WPX ENERGY	Job Date: 13-Feb-2012	Sales Order #: 9260325
Well Description: SG 322-23	Job Type: SURFACE	ADC Used: YES
Company Rep: MIKE SCHULTZ	Cement Supervisor: MIKE MAGERS	Elite #7: STEVE BORSZICH

HALLIBURTON

Water Analysis Report

Company: WILLIAMS H&P 271

Date: 2/13/2012

Submitted by: MIKE MAGERS

Date Rec: 2/13/2012

Attention: J.Trout/ C.Martinez

S.O.# 9260325

Lease SG

Job Type: SURFACE

Well # 322-23

Specific Gravity	<i>MAX</i>	1
pH	<i>8</i>	7.5
Potassium (K)	<i>5000</i>	450 Mg / L
Calcium (Ca)	<i>500</i>	120 Mg / L
Iron (FE2)	<i>300</i>	0 Mg / L
Chlorides (Cl)	<i>3000</i>	0 Mg / L
Sulfates (SO ₄)	<i>1500</i>	under 200 Mg / L
Chlorine (Cl ₂)		0 Mg / L
Temp	<i>40-80</i>	50
Total Dissolved Solids		120 Mg / L

Respectfully: MIKE MAGERS

Title: CEMENTING SUPERVISOR

Location: Grand Junction, CO

NOTICE: This report is limited to the described sample tested. Any person using or relying on this report agrees that Halliburton shall not be liable for any loss or damage whether due to act or omission resulting from such report or

Sales Order #: 9260325	Line Item: 10	Survey Conducted Date: 2/13/2012
Customer: WPX ENERGY ROCKY MOUNTAIN LLC-EBUS		Job Type (BOM): CMT SURFACE CASING BOM
Customer Representative: MIKE SCHULTZ		API / UWI: (leave blank if unknown) AFEY0NM0Q2JXRAXBAAA
Well Name: SG		Well Number: 322-23
Well Type: Development Well	Well Country: United States of America	
H2S Present:	Well State: Colorado	Well County: Garfield

Dear Customer,

We hope that you were satisfied with the service quality of this job performed by Halliburton. It is the aim of our management and service personnel to deliver equipment and service of a standard unmatched in the service sector of the energy industry.

Please take the time to let us know if our performance met with your satisfaction. Please be as critical as possible to ensure we constantly improve our service. Your comments are of great value to us and are intended for the exclusive use of Halliburton.

CUSTOMER SATISFACTION SURVEY

CATEGORY	CUSTOMER SATISFACTION RESPONSE	
Survey Conducted Date	The date the survey was conducted	2/13/2012
Survey Interviewer	The survey interviewer is the person who initiated the survey.	MICHAEL MAGERS (HX13672)
Customer Participation	Did the customer participate in this survey? (Y/N)	Yes
Customer Representative	Enter the Customer representative name	MIKE SCHULTZ
HSE	Was our HSE performance satisfactory? Circle Y or N	Yes
Equipment	Were you satisfied with our Equipment? Circle Y or N	Yes
Personnel	Were you satisfied with our people? Circle Y or N	Yes
Customer Comment	Customer's Comment	

CUSTOMER SIGNATURE

Sales Order #: 26032	Line Item: 10	Survey Conducted Date: 2/13/2012
Customer: WPX ENERGY ROCKY MOUNTAIN LLC-EBUS		Job Type (BOM): CMT SURFACE CASING BOM
Customer Representative: MIKE SCHULTZ		API / UWI: (leave blank if unknown) AFEY0NM0Q2JXRAXBAAA
Well Name: SG		Well Number: 322-23
Well Type: Development Well	Well Country: United States of America	
H2S Present:	Well State: Colorado	Well County: Garfield

KEY PERFORMANCE INDICATORS**General**

Survey Conducted Date	2/13/2012
The date the survey was conducted	

Cementing KPI Survey

Type of Job	0
Select the type of job: Cementing or Non-Cementing	
Select the Maximum Deviation range for this Job	Vertical
What is the biggest deviation for the job you just completed? This may not be the maximum well deviation	
Total Operating Time (hours)	3
Total Operating Hours Including Rig-up/Pumping/Rig-down. Enter in decimal format	
HSE Incident/Accident/Injury	No
HSE Incident/Accident/Injury. This should be recordable incidents only	
Was the job purpose achieved?	Yes
Was the job delivered correctly as per customer agreed design	
Operating Hours (Pumping Hours)	1
Total number of hours pumping fluid on this job. Enter in decimal format	
Customer Non-Productive Rig Time (hrs)	0
Lost time due to Halliburton in the start/execution or completion of an ordered service or product or delays in a follow-on service. Enter in decimal format: 0 if none	
Type of Rig Classification Job Was Performed	Drilling Rig Portable
Type Of Rig Classification Job Was Performed On	
Number Of JSAs Performed	
Number Of Jsas Performed	
Number of Unplanned Shutdowns	0
Unplanned shutdown is when injection stops for an period of time	
Was this a Primary Cement Job (Yes / No)	Yes

Sales Order #: 26032	Line Item: 10	Survey Conducted Date: 2/13/2012
Customer: WPX ENERGY ROCKY MOUNTAIN LLC-EBUS		Job Type (BOM): CMT SURFACE CASING BOM
Customer Representative: MIKE SCHULTZ		API / UWI: (leave blank if unknown) AFEY0NM0Q2JXRAXBAAA
Well Name: SG		Well Number: 322-23
Well Type: Development Well	Well Country: United States of America	
H2S Present:	Well State: Colorado	Well County: Garfield

Primary Cement Job <input type="checkbox"/> Casing Job <input type="checkbox"/> Liner Job <input type="checkbox"/> or Tie-back Job <input type="checkbox"/>	
Did We Run Wiper Plugs? Did We Run Top And Bottom Casing Wiper Plugs <input type="checkbox"/>	Top
Minimum Density of Job Stayed in Designed Density Range (0-100%) Density Range defined as +/- 20 ppg. Calculation: Total BBLs cement mixed at designed density divided by total BBLs of cement multiplied by 100	
Was Automated Density Control Used? Was Automated Density Control (ADC) Used <input type="checkbox"/>	Yes
Pump Rate (percent) of Job Stayed At Designed Pump Rate Pump Rate range defined as +/- 1 bbl/min. Calculation: Total BBLs of fluid pumped at the designed rate divided by Total BBLs of fluid pumped multiplied by 100	
Nbr of Remedial Spill Jobs Rqd by Competition Number Of Remedial Spill Jobs Required After Primary Job Performed By Competition	0
Nbr of Remedial Plug Jobs Rqd by HES Number Of Remedial Plug Jobs Needed After Primary Plug Pumped By HES	0
Nbr of Remedial Spill Jobs Rqd by HES Number Of Remedial Spill Jobs Required After Primary Job Performed By HES	0