
WPX ENERGY ROCKY MOUNTAIN LLC-EBUS

**SG 22-23
GRAND VALLEY
Garfield County , Colorado**

Cement Surface Casing
08-Feb-2012

Post Job Report

The Road to Excellence Starts with Safety

Sold To #: 300721		Ship To #: 2906962		Quote #:		Sales Order #: 9260344	
Customer: WPX ENERGY ROCKY MOUNTAIN LLC-EBUS				Customer Rep: Schults, Mike			
Well Name: SG			Well #: 22-23			API/UWI #: 05-045-20833	
Field: GRAND VALLEY		City (SAP): PARACHUTE		County/Parish: Garfield		State: Colorado	
Lat: N 39.427 deg. OR N 39 deg. 25 min. 37.974 secs.				Long: W 108.082 deg. OR W -109 deg. 55 min. 6.013 secs.			
Contractor: H&P 271			Rig/Platform Name/Num: H&P 271				
Job Purpose: Cement Surface Casing							
Well Type: Development Well			Job Type: Cement Surface Casing				
Sales Person: MAYO, MARK			Srvc Supervisor: PONDER, THOMAS			MBU ID Emp #: 427112	

Job Personnel

HES Emp Name	Exp Hrs	Emp #	HES Emp Name	Exp Hrs	Emp #	HES Emp Name	Exp Hrs	Emp #
BORSZICH, STEPHEN A	8	412388	MAGERS, MICHAEL Gerard	8	339439	PONDER, THOMAS Lynn	8	427112
SINCLAIR, DAN J	8	338784						

Equipment

HES Unit #	Distance-1 way	HES Unit #	Distance-1 way	HES Unit #	Distance-1 way	HES Unit #	Distance-1 way
10784064	60 mile	10872429	60 mile	11006314	60 mile	11259886	60 mile
11360883	60 mile						

Job Hours

Date	On Location Hours	Operating Hours	Date	On Location Hours	Operating Hours	Date	On Location Hours	Operating Hours
02/08/2012	8	2						

TOTAL Total is the sum of each column separately

Job

Formation Name	Formation Depth (MD)	Top	Bottom	Form Type	Job depth MD	Job Depth TVD	Water Depth	Perforation Depth (MD)	From	To
				BHST	768. ft	768. ft				
						3. ft				

Job Times

Date	Time	Time Zone
08 - Feb - 2012	01:00	MST
08 - Feb - 2012	03:00	MST
08 - Feb - 2012	08:41	MST
08 - Feb - 2012	09:26	MST
08 - Feb - 2012	11:00	MST

Well Data

Description	New / Used	Max pressure psig	Size in	ID in	Weight lbm/ft	Thread	Grade	Top MD ft	Bottom MD ft	Top TVD ft	Bottom TVD ft
OPEN HOLE				13.5					768.		
SURFACE CASING	Unknown		9.625	9.001	32.3		H-40		753.		

Sales/Rental/3rd Party (HES)

Description	Qty	Qty uom	Depth	Supplier
PLUG,CMTG,TOP,9 5/8,HWE,8.16 MIN/9.06 MA	1	EA		

Tools and Accessories

Type	Size	Qty	Make	Depth	Type	Size	Qty	Make	Depth	Type	Size	Qty	Make
Guide Shoe					Packer					Top Plug	9 5/8	1	HES
Float Shoe					Bridge Plug					Bottom Plug			
Float Collar					Retainer					SSR plug set			
Insert Float										Plug Container	9 5/8	1	HES
Stage Tool										Centralizers			

Miscellaneous Materials

Gelling Agt	Conc	Surfactant	Conc	Acid Type	Qty	Conc	%
Treatment Fld	Conc	Inhibitor	Conc	Sand Type	Size	Qty	

Fluid Data

Stage/Plug #: 1

Fluid #	Stage Type	Fluid Name	Qty	Qty uom	Mixing Density lbm/gal	Yield ft ³ /sk	Mix Fluid Gal/sk	Rate bbl/min	Total Mix Fluid Gal/sk
1	Fresh Water		20.00	bbl	8.33	.0	.0	6.0	
2	Tail Cement	VERSACEM (TM) SYSTEM (452010)	200.0	sacks	12.8	2.11	11.75	8.0	11.75
3	Displacement Fluid		56.00	bbl	8.34	.0	.0	10.0	
Calculated Values		Pressures		Volumes					
Displacement	55.7	Shut In: Instant		Lost Returns		Cement Slurry	75.2	Pad	
Top Of Cement	SURFACE	5 Min		Cement Returns	10	Actual Displacement	55.7	Treatment	
Frac Gradient		15 Min		Spacers	20	Load and Breakdown		Total Job	151
Rates									
Circulating	RIG	Mixing	7	Displacement	9	Avg. Job	7		
Cement Left In Pipe	Amount	45 ft	Reason	Shoe Joint					
Frac Ring # 1 @	ID		Frac ring # 2 @	ID		Frac Ring # 3 @	ID		Frac Ring # 4 @
The Information Stated Herein Is Correct				Customer Representative Signature					

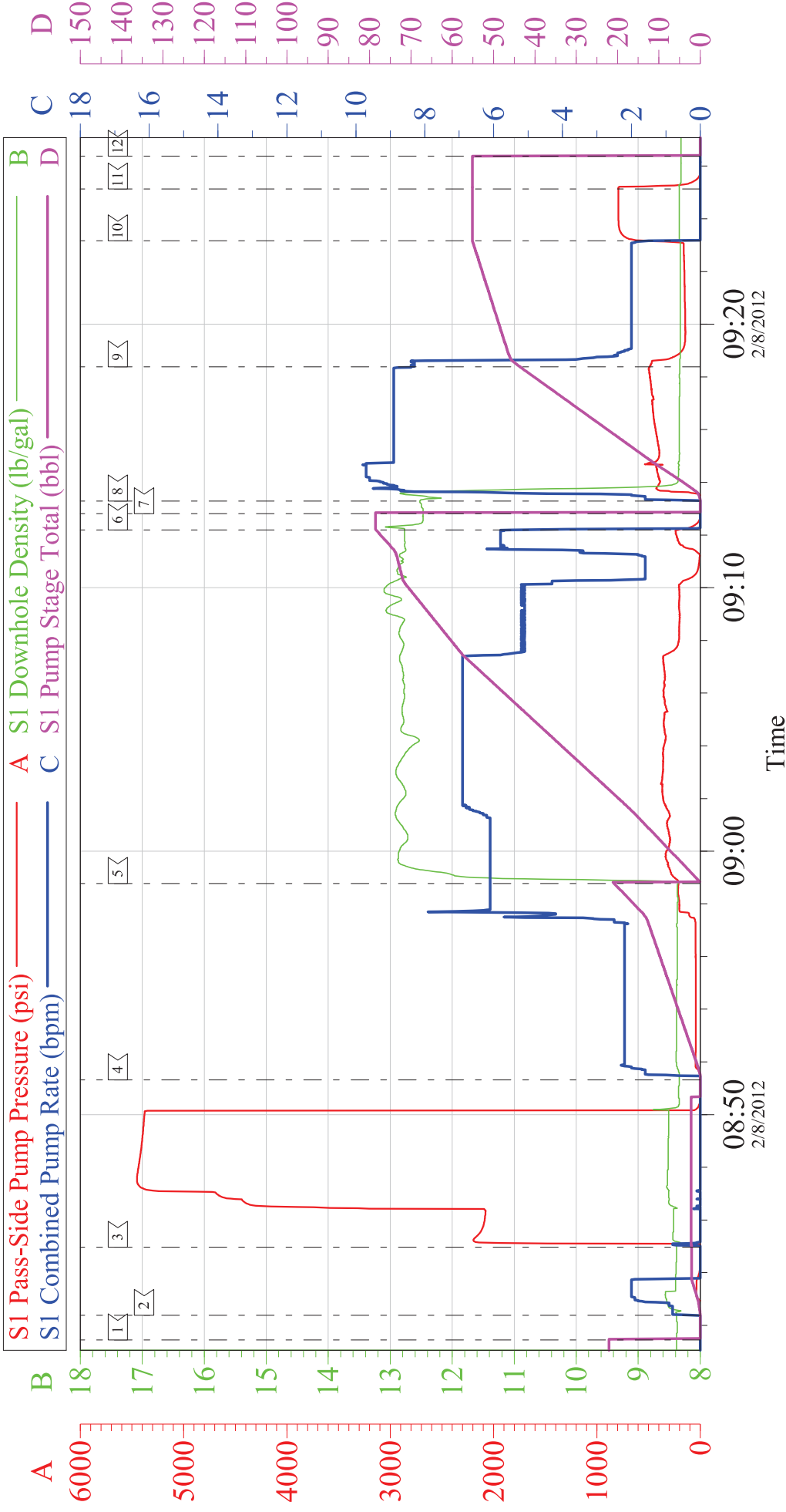
The Road to Excellence Starts with Safety

Sold To #: 300721		Ship To #: 2906962		Quote #:		Sales Order #: 9260344	
Customer: WPX ENERGY ROCKY MOUNTAIN LLC-EBUS				Customer Rep: Schults, Mike			
Well Name: SG			Well #: 22-23			API/UWI #: 05-045-20833	
Field: GRAND VALLEY		City (SAP): PARACHUTE		County/Parish: Garfield		State: Colorado	
Legal Description:							
Lat: N 39.427 deg. OR N 39 deg. 25 min. 37.974 secs.				Long: W 108.082 deg. OR W -109 deg. 55 min. 6.013 secs.			
Contractor: H&P 271			Rig/Platform Name/Num: H&P 271				
Job Purpose: Cement Surface Casing						Ticket Amount:	
Well Type: Development Well			Job Type: Cement Surface Casing				
Sales Person: MAYO, MARK			Srvc Supervisor: PONDER, THOMAS			MBU ID Emp #: 427112	

Activity Description	Date/Time	Cht #	Rate bbl/min	Volume bbl		Pressure psig		Comments
				Stage	Total	Tubing	Casing	
Call Out	02/08/2012 01:00							
Crew Leave Yard	02/08/2012 02:00							ALL HES PRESENT FOR PRE-CONVOY SAFETY HUDDLE
Arrive At Loc	02/08/2012 03:00							RIG WAS STILL RUNNING CASING WHEN CREW ARRIVED ON LOCATION
Assessment Of Location Safety Meeting	02/08/2012 06:30							TD- 768', TP- 753', SJ- 45', MUD- 10 PPG, HOLE- 13 1/2", SURFACE CASING- 9 5/8" 32.3# H-40
Rig-Up Equipment	02/08/2012 06:45							RIG STARTED CIRCULATION ON BOTTOM @ 0745
Safety Meeting	02/08/2012 08:00							ALL HES PRESENT, RIG CREW PRESENT
Start Job	02/08/2012 08:41							
Other	02/08/2012 08:42		2	2			40.0	FILL LINES
Test Lines	02/08/2012 08:44		0.1	0.1			5452.0	
Pump Spacer 1	02/08/2012 08:51		6	20			217.0	FRESH WATER
Pump Tail Cement	02/08/2012 08:58		7	75.2			381.0	200 SKS 12.8 PPG 2.11 FT3/SK 11.75 GAL/SK
Shutdown	02/08/2012 09:12							
Drop Plug	02/08/2012 09:12							PLUG DROP VERIFIED VIA TATTLE TELL BY CUSTOMER REP

Activity Description	Date/Time	Cht #	Rate bbl/ min	Volume bbl		Pressure psig		Comments
				Stage	Total	Tubing	Casing	
Pump Displacement	02/08/2012 09:13		9	55.7			536.0	FRESH WATER
Slow Rate	02/08/2012 09:18		2	45.7			146.0	GOOD RETURNS THROUGH OUT THE JOB, CIRCULATED 10 BBL OF CEMENT TO SURFACE
Bump Plug	02/08/2012 09:23		2	55.7			164.0	PLUG BUMPED
Check Floats	02/08/2012 09:25						794.0	FLOATS HELD, .5 BBL BACK TO THE DISPLACEMENT TANKS
End Job	02/08/2012 09:26							THANK YOU FOR CHOOSING HALLIBURTON, THOMAS PONDER AND CREW

9.625 IN SURFACE

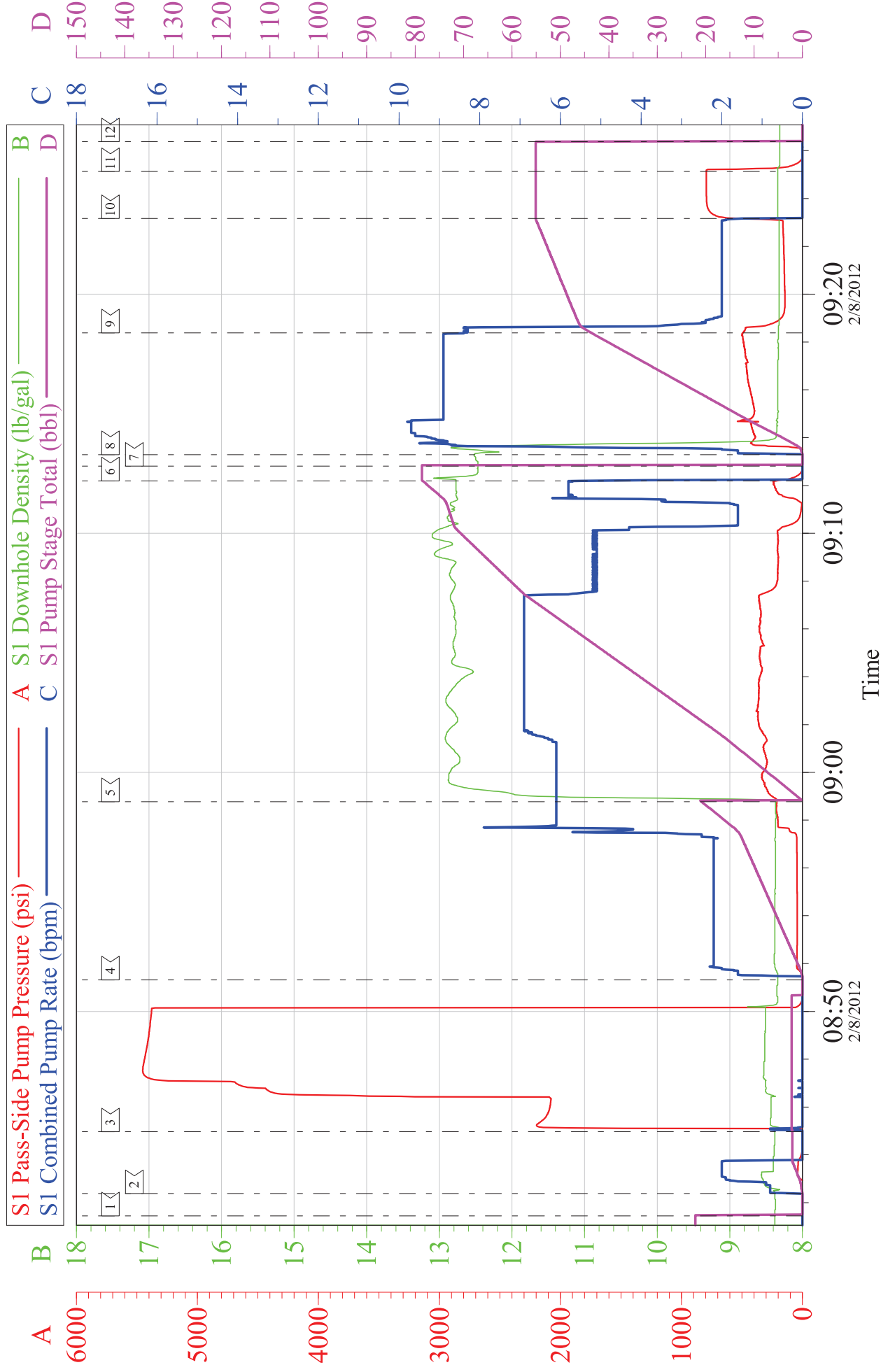


Local Event Log				
	Maximum	SPPP	Maximum	SPPP
1 START JOB	08:41:27	-14.00	2 FILL LINES	08:42:23
4 PUMP SPACER	08:51:19	217.0	5 PUMP TAIL CEMENT	08:58:46
7 DROP PLUG	09:12:48	-7.000	8 PUMP FRSH WTR DISPLACEMENT	09:13:17
10 BUMP PLUG	09:23:10	793.0	11 CHECK FLOATS	09:25:08
			3 PRESSURE TEST	08:44:58
			6 SHUT DOWN	09:12:11
			9 SLOW RATE	09:18:23
			12 END JOB	09:26:22
				5452
				234.0
				492.0
				-16.00

Customer:	WPX	Job Date:	08-Feb-2012	Sales Order #:	9260344
Well Description:	SG 22-23	Job Type:	SURFACE	ADC Used:	YES
Company Rep:	MIKE SCHULTS	Cement Supervisor:	THOMAS PONDER	Elite #/Operator:	ELITE # 7 / DAN SINCLAIR

WPX SG 22-23

9.625 IN SURFACE



Customer: WPX	Job Date: 08-Feb-2012	Sales Order #: 9260344
Well Description: SG 22-23	Job Type: SURFACE	ADC Used: YES
Company Rep: MIKE SCHULTS	Cement Supervisor: THOMAS PONDER	Elite #/Operator: ELITE # 7 / DAN SINCLAIR

HALLIBURTON

Company: WPX Date: 2/8/2012
Submitted by: THOMAS PONDER Date Rec.: 2/8/2012
Attention: ohn Trout/Chris Martinez S.O.# 9260344
Lease SG Job Type: SURFACE
Well # 22-23

Specific Gravity *MAX* 1

pH *8* 7

Potassium (K) *5000* 250 Mg / L

Calcium (Ca) *500* 10 Mg / L

Iron (FE2) *300* 0 Mg / L

Chlorides (Cl) *3000* 0 Mg / L

Sulfates (SO₄) *1500* 200 Mg / L

Temp *40-80* 65 Deg

Total Dissolved Solids *✓* 460 Mg / L

Respectfully: THOMAS PONDER

Title: CEMENTING SUPERVISOR

Location: GRAND JCT, CO

Sales Order #: 9260344	Line Item: 10	Survey Conducted Date: 2/8/2012
Customer: WPX ENERGY ROCKY MOUNTAIN LLC-EBUS		Job Type (BOM): CMT SURFACE CASING BOM
Customer Representative: MIKE SCHULTS		API / UWI: (leave blank if unknown) 05-045-20833
Well Name: SG		Well Number: 22-23
Well Type: Development Well	Well Country: United States of America	
H2S Present:	Well State: Colorado	Well County: Garfield

Dear Customer,

We hope that you were satisfied with the service quality of this job performed by Halliburton. It is the aim of our management and service personnel to deliver equipment and service of a standard unmatched in the service sector of the energy industry.

Please take the time to let us know if our performance met with your satisfaction. Please be as critical as possible to ensure we constantly improve our service. Your comments are of great value to us and are intended for the exclusive use of Halliburton.

CUSTOMER SATISFACTION SURVEY

CATEGORY	CUSTOMER SATISFACTION RESPONSE	
Survey Conducted Date	The date the survey was conducted	2/8/2012
Survey Interviewer	The survey interviewer is the person who initiated the survey.	THOMAS PONDER (HX41187)
Customer Participation	Did the customer participate in this survey? (Y/N)	Yes
Customer Representative	Enter the Customer representative name	MIKE SCHULTS
HSE	Was our HSE performance satisfactory? Circle Y or N	Yes
Equipment	Were you satisfied with our Equipment? Circle Y or N	Yes
Personnel	Were you satisfied with our people? Circle Y or N	Yes
Customer Comment	Customer's Comment	

CUSTOMER SIGNATURE

Sales Order #: 9260344	Line Item: 10	Survey Conducted Date: 2/8/2012
Customer: WPX ENERGY ROCKY MOUNTAIN LLC-EBUS		Job Type (BOM): CMT SURFACE CASING BOM
Customer Representative: MIKE SCHULTS		API / UWI: (leave blank if unknown) 05-045-20833
Well Name: SG		Well Number: 22-23
Well Type: Development Well	Well Country: United States of America	
H2S Present:	Well State: Colorado	Well County: Garfield

KEY PERFORMANCE INDICATORS

General	
Survey Conducted Date The date the survey was conducted	2/8/2012

Cementing KPI Survey	
Type of Job Select the type of job Cementing or Non-Cementing	0
Select the Maximum Deviation range for this Job What is the biggest deviation for the job you just completed? This may not be the maximum well deviation	Vertical
Total Operating Time (hours) Total Operating Hours Including Rig-up Pumping Rig-down Enter in decimal format	2
HSE Incident/Accident/Injury HSE Incident/Accident/Injury This should be recordable incidents only	No
Was the job purpose achieved? Was the job delivered correctly as per customer agreed design	Yes
Operating Hours (Pumping Hours) Total number of hours pumping fluid on this job Enter in decimal format	1
Customer Non-Productive Rig Time (hrs) Lost time due to Halliburton in the start execution or completion of an ordered service or product or delays in a follow-on service Enter in decimal format: 0 if none	0
Type of Rig Classification Job Was Performed Type Of Rig Classification Job Was Performed On	Drilling Rig Portable
Number Of JSAs Performed Number Of Jsas Performed	5
Number of Unplanned Shutdowns Unplanned shutdown is when injection stops for an period of time	0
Was this a Primary Cement Job (Yes / No)	Yes

Sales Order #: 9260344	Line Item: 10	Survey Conducted Date: 2/8/2012
Customer: WPX ENERGY ROCKY MOUNTAIN LLC-EBUS		Job Type (BOM): CMT SURFACE CASING BOM
Customer Representative: MIKE SCHULTS		API / UWI: (leave blank if unknown) 05-045-20833
Well Name: SG		Well Number: 22-23
Well Type: Development Well	Well Country: United States of America	
H2S Present:	Well State: Colorado	Well County: Garfield

Primar <input type="checkbox"/> Cement Job <input type="checkbox"/> Casing Job <input type="checkbox"/> Liner Job <input type="checkbox"/> or Tie-back Job <input type="checkbox"/>	
Did We Run Wiper Plugs? Did We Run Top And Bottom Casing Wiper Plugs <input type="checkbox"/>	Top
Min Density of Job Stayed in Designed Density Range (0-100%) Density Range defined as +/- 20 ppg Calculation: Total BBLs cement mixed at designed density divided by total BBLs of cement multiplied by 100	92
Was Automated Density Control Used? Was Automated Density Control (ADC) Used <input type="checkbox"/>	Yes
Pump Rate (percent) of Job Stayed At Designed Pump Rate Pump Rate range defined as +/- 1 bbl/min Calculation: Total BBLs of fluid pumped at the designed rate divided by Total BBLs of fluid pumped multiplied by 100	90
Nbr of Remedial Square Jobs Rqd by Competition Number Of Remedial Square Jobs Required After Primary Job Performed By Competition	0
Nbr of Remedial Plug Jobs Rqd by HES Number Of Remedial Plug Jobs Needed After Primary Plug Pumped By HES	0
Nbr of Remedial Square Jobs Rqd by HES Number Of Remedial Square Jobs Required After Primary Job Performed By HES	0