

MARATHON OIL COMPANY

Location: COLORADO

Field: WELD COUNTY (NAD 83, GRID NORTH)

Facility: SEC.06-T8N-R64W

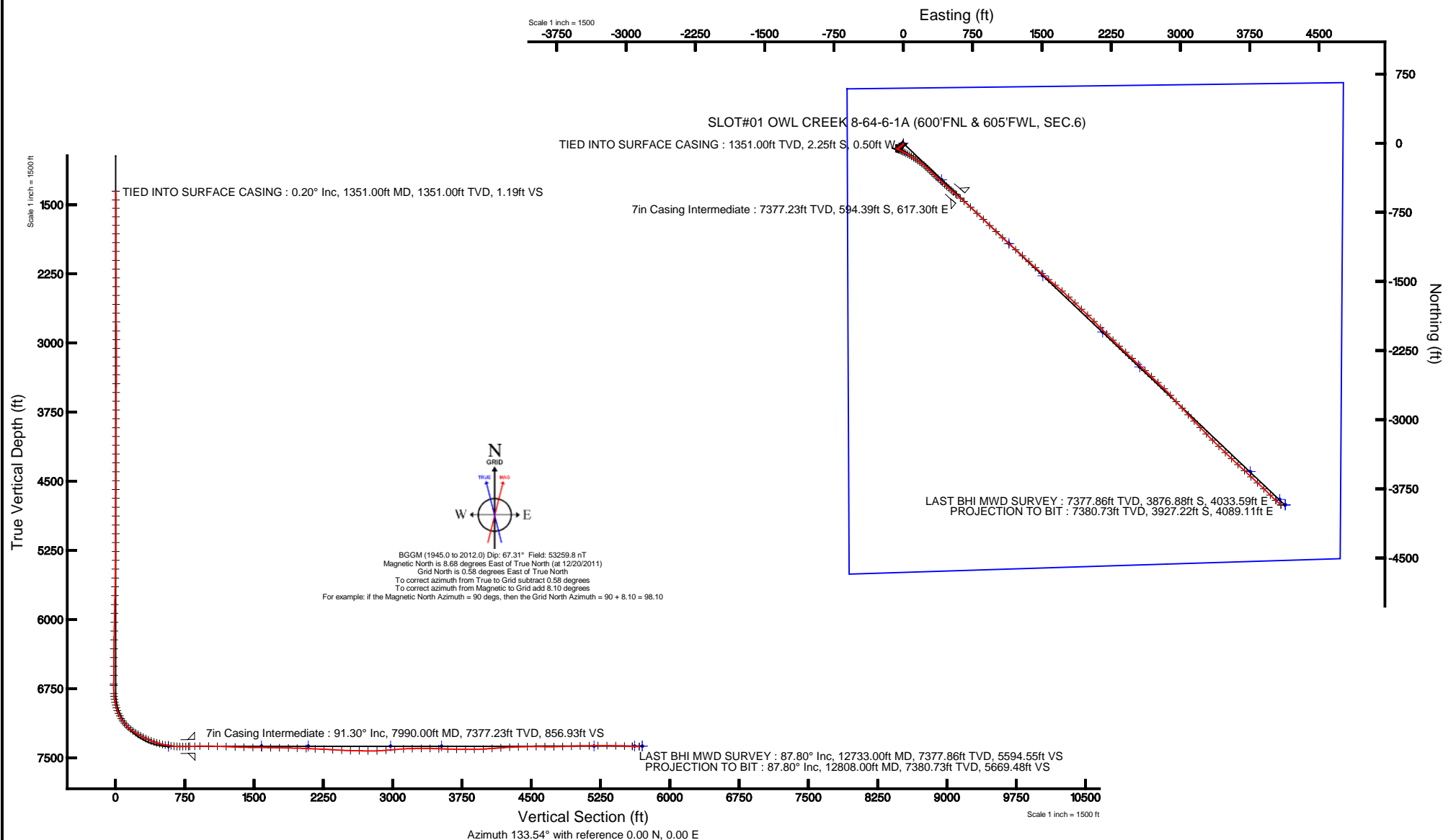
Slot: SLOT#01 OWL CREEK 8-64-6-1A (600'FNL & 605'FWL, SEC.6)

Well: OWL CREEK 8-64-6-1A

Wellbore: OWL CREEK 8-64-6-1A pwb



Plot reference wellpath is OWL CREEK 8-64-6-1A (REV-A-1) PWP	
True vertical depths are referenced to Rig on SLOTH01 OWL CREEK 8-64-6-1A (600FTNL & 605FTWL, SEC.6) (RKB)	Grid System: NAD83 / Lambert Colorado SP, Northern Zone (501), US feet
Measured depths are referenced to Rig on SLOTH01 OWL CREEK 8-64-6-1A (600FTNL & 605FTWL, SEC.6) (RKB)	North Reference: Grid north
Rig on SLOTH01 OWL CREEK 8-64-6-1A (600FTNL & 605FTWL, SEC.6) (RKB) to Mean Sea Level: 5208 feet	Scale: True distance
Mean Sea Level to Mud line (at Slot) SLOTH01 OWL CREEK 8-64-6-1A (600FTNL & 605FTWL, SEC.6): 0 feet	Depths are in feet
Coordinates are in feet referenced to Slot	Created by: cookdman on 2/9/2012





Actual Wellpath Report

OWL CREEK 8-64-6-1A AWP

Page 1 of 7



REFERENCE WELLPATH IDENTIFICATION

Operator	MARATHON OIL COMPANY	Slot	SLOT#01 OWL CREEK 8-64-6-1A (600'FNL & 605'FWL, SEC.6)
Area	COLORADO	Well	OWL CREEK 8-64-6-1A
Field	WELD COUNTY (NAD 83, GRID NORTH)	Wellbore	OWL CREEK 8-64-6-1A AWB
Facility	SEC.06-T8N-R64W		

REPORT SETUP INFORMATION

Projection System	NAD83 / Lambert Colorado SP, Northern Zone (501), US feet	Software System	WellArchitect® 3.0.2
North Reference	Grid	User	Cookdanm
Scale	0.999987	Report Generated	2/9/2012 at 12:00:37 PM
Convergence at slot	0.58° East	Database/Source file	WA_Denver/OWL_CREEK_8-64-6-1A_AWB.xml

WELLPATH LOCATION

	Local coordinates		Grid coordinates		Geographic coordinates	
	North[ft]	East[ft]	Easting[US ft]	Northing[US ft]	Latitude	Longitude
Slot Location	0.00	0.00	3249954.88	1497060.40	40°41'39.609"N	104°35'54.960"W
Facility Reference Pt			3249954.88	1497060.40	40°41'39.609"N	104°35'54.960"W
Field Reference Pt			3476081.76	1512960.14	40°43'43.704"N	103°46'55.829"W

WELLPATH DATUM

Calculation method	Minimum curvature	Rig on SLOT#01 OWL CREEK 8-64-6-1A (600'FNL & 605'FWL, SEC.6) (RKB) to Facility Vertical Datum
Horizontal Reference Pt	Slot	Rig on SLOT#01 OWL CREEK 8-64-6-1A (600'FNL & 605'FWL, SEC.6) (RKB) to Mean Sea Level
Vertical Reference Pt	Rig on SLOT#01 OWL CREEK 8-64-6-1A (600'FNL & 605'FWL, SEC.6) (RKB)	Rig on SLOT#01 OWL CREEK 8-64-6-1A (600'FNL & 605'FWL, SEC.6) (RKB) to Mud Line at Slot (SLOT#01 OWL CREEK 8-64-6-1A AWB)
MD Reference Pt	Rig on SLOT#01 OWL CREEK 8-64-6-1A (600'FNL & 605'FWL, SEC.6) (RKB)	Section Origin
Field Vertical Reference	Mean Sea Level	Section Azimuth



Actual Wellpath Report

OWL CREEK 8-64-6-1A AWP

Page 2 of 7



REFERENCE WELLPATH IDENTIFICATION

Operator	MARATHON OIL COMPANY	Slot	SLOT#01 OWL CREEK 8-64-6-1A (600'FNL & 605'FWL, SEC.6)
Area	COLORADO	Well	OWL CREEK 8-64-6-1A
Field	WELD COUNTY (NAD 83, GRID NORTH)	Wellbore	OWL CREEK 8-64-6-1A AWB
Facility	SEC.06-T8N-R64W		

WELLPATH DATA (146 stations)

MD [ft]	Inclination [°]	Azimuth [°]	TVD [ft]	Vert Sect [ft]	North [ft]	East [ft]	Grid East [US ft]	Grid North [US ft]	Latitude	Longitude	DLS [°/100ft]	Comments
1351.00	0.200	192.500	1351.00	1.19	-2.25	-0.50	3249954.38	1497058.15	40°41'39.587"N	104°35'54.967"W	0.00	TIED INTO SURFACE CASING
1447.00	0.400	198.000	1447.00	1.42	-2.73	-0.64	3249954.24	1497057.67	40°41'39.582"N	104°35'54.969"W	0.21	
1536.00	0.400	195.600	1536.00	1.70	-3.33	-0.82	3249954.06	1497057.07	40°41'39.576"N	104°35'54.972"W	0.02	
1629.00	0.500	202.900	1628.99	1.99	-4.01	-1.06	3249953.82	1497056.39	40°41'39.570"N	104°35'54.975"W	0.12	
1721.00	0.500	206.300	1720.99	2.25	-4.74	-1.40	3249953.48	1497055.66	40°41'39.562"N	104°35'54.979"W	0.03	
1814.00	0.500	180.100	1813.99	2.65	-5.51	-1.58	3249953.30	1497054.89	40°41'39.555"N	104°35'54.982"W	0.24	
1910.00	0.400	232.200	1909.98	2.89	-6.14	-1.84	3249953.04	1497054.26	40°41'39.549"N	104°35'54.985"W	0.42	
2005.00	0.500	210.900	2004.98	2.93	-6.70	-2.32	3249952.56	1497053.70	40°41'39.543"N	104°35'54.991"W	0.20	
2101.00	0.600	204.100	2100.98	3.19	-7.51	-2.74	3249952.14	1497052.89	40°41'39.535"N	104°35'54.997"W	0.12	
2197.00	0.600	193.700	2196.97	3.61	-8.46	-3.06	3249951.82	1497051.94	40°41'39.526"N	104°35'55.001"W	0.11	
2293.00	0.800	191.800	2292.96	4.21	-9.61	-3.32	3249951.56	1497050.79	40°41'39.515"N	104°35'55.005"W	0.21	
2387.00	0.500	199.900	2386.96	4.72	-10.63	-3.59	3249951.29	1497049.77	40°41'39.505"N	104°35'55.009"W	0.33	
2483.00	0.600	177.400	2482.95	5.25	-11.53	-3.71	3249951.17	1497048.87	40°41'39.496"N	104°35'55.010"W	0.25	
2579.00	0.600	216.100	2578.95	5.68	-12.44	-3.99	3249950.89	1497047.96	40°41'39.487"N	104°35'55.014"W	0.41	
2676.00	0.900	217.500	2675.94	5.82	-13.45	-4.75	3249950.13	1497046.95	40°41'39.477"N	104°35'55.024"W	0.31	
2771.00	1.300	209.600	2770.92	6.16	-14.98	-5.74	3249949.14	1497045.42	40°41'39.462"N	104°35'55.037"W	0.45	
2867.00	0.900	220.800	2866.91	6.46	-16.50	-6.77	3249948.11	1497043.90	40°41'39.447"N	104°35'55.051"W	0.47	
2963.00	1.000	213.400	2962.89	6.64	-17.77	-7.72	3249947.16	1497042.63	40°41'39.434"N	104°35'55.063"W	0.16	
3059.00	0.900	212.800	3058.88	6.93	-19.10	-8.59	3249946.29	1497041.30	40°41'39.421"N	104°35'55.075"W	0.10	
3154.00	1.000	220.100	3153.87	7.12	-20.36	-9.53	3249945.35	1497040.04	40°41'39.409"N	104°35'55.087"W	0.17	
3249.00	1.100	229.500	3248.85	7.07	-21.59	-10.76	3249944.12	1497038.81	40°41'39.397"N	104°35'55.103"W	0.21	
3344.00	1.400	229.400	3343.83	6.86	-22.94	-12.33	3249942.55	1497037.46	40°41'39.384"N	104°35'55.124"W	0.32	
3441.00	1.200	237.400	3440.80	6.50	-24.26	-14.09	3249940.79	1497036.14	40°41'39.371"N	104°35'55.147"W	0.28	
3536.00	1.200	248.400	3535.78	5.84	-25.16	-15.85	3249939.03	1497035.24	40°41'39.362"N	104°35'55.170"W	0.24	
3632.00	1.100	244.100	3631.76	5.09	-25.93	-17.61	3249937.27	1497034.47	40°41'39.355"N	104°35'55.193"W	0.14	
3727.00	1.200	234.100	3726.74	4.59	-26.91	-19.24	3249935.64	1497033.49	40°41'39.345"N	104°35'55.214"W	0.24	
3823.00	1.400	236.700	3822.72	4.14	-28.15	-21.03	3249933.85	1497032.25	40°41'39.333"N	104°35'55.237"W	0.22	
3919.00	1.400	238.900	3918.69	3.56	-29.40	-23.02	3249931.86	1497031.01	40°41'39.321"N	104°35'55.263"W	0.06	
4014.00	1.400	231.500	4013.66	3.09	-30.72	-24.92	3249929.96	1497029.68	40°41'39.308"N	104°35'55.288"W	0.19	
4110.00	1.500	234.700	4109.63	2.69	-32.17	-26.86	3249928.02	1497028.23	40°41'39.294"N	104°35'55.313"W	0.13	
4205.00	1.300	226.500	4204.60	2.39	-33.63	-28.66	3249926.22	1497026.77	40°41'39.280"N	104°35'55.337"W	0.30	
4301.00	1.300	226.800	4300.58	2.27	-35.13	-30.24	3249924.64	1497025.27	40°41'39.265"N	104°35'55.358"W	0.01	
4398.00	1.500	235.000	4397.55	1.96	-36.61	-32.09	3249922.80	1497023.79	40°41'39.251"N	104°35'55.382"W	0.29	
4494.00	1.500	226.800	4493.52	1.64	-38.19	-34.03	3249920.85	1497022.21	40°41'39.235"N	104°35'55.407"W	0.22	
4590.00	1.600	230.600	4589.48	1.40	-39.90	-35.98	3249918.90	1497020.50	40°41'39.219"N	104°35'55.433"W	0.15	
4686.00	1.800	225.900	4685.44	1.17	-41.80	-38.10	3249916.78	1497018.60	40°41'39.200"N	104°35'55.461"W	0.25	
4782.00	2.100	226.400	4781.38	1.02	-44.06	-40.46	3249914.42	1497016.34	40°41'39.178"N	104°35'55.491"W	0.31	
4879.00	2.200	222.000	4878.31	0.98	-46.67	-42.99	3249911.89	1497013.73	40°41'39.152"N	104°35'55.525"W	0.20	
4975.00	1.900	223.500	4974.25	1.04	-49.20	-45.32	3249909.56	1497011.20	40°41'39.128"N	104°35'55.555"W	0.32	
5072.00	2.000	225.600	5071.20	0.98	-51.55	-47.63	3249907.25	1497008.85	40°41'39.105"N	104°35'55.586"W	0.13	
5167.00	1.900	228.800	5166.14	0.77	-53.74	-50.00	3249904.88	1497006.66	40°41'39.083"N	104°35'55.617"W	0.16	
5263.00	1.300	243.100	5262.10	0.26	-55.29	-52.17	3249902.71	1497005.12	40°41'39.068"N	104°35'55.645"W	0.75	
5359.00	1.400	264.100	5358.08	-0.87	-55.90	-54.31	3249900.57	1497004.50	40°41'39.062"N	104°35'55.673"W	0.52	
5455.00	1.200	276.600	5454.05	-2.43	-55.90	-56.48	3249898.41	1497004.50	40°41'39.063"N	104°35'55.701"W	0.36	
5551.00	1.400	277.100	5550.03	-4.18	-55.64	-58.64	3249896.24	1497004.76	40°41'39.065"N	104°35'55.729"W	0.21	



Actual Wellpath Report

OWL CREEK 8-64-6-1A AWP

Page 3 of 7



REFERENCE WELLPATH IDENTIFICATION

Operator	MARATHON OIL COMPANY	Slot	SLOT#01 OWL CREEK 8-64-6-1A (600'FNL & 605'FWL, SEC.6)
Area	COLORADO	Well	OWL CREEK 8-64-6-1A
Field	WELD COUNTY (NAD 83, GRID NORTH)	Wellbore	OWL CREEK 8-64-6-1A AWB
Facility	SEC.06-T8N-R64W		

WELLPATH DATA (146 stations)

MD [ft]	Inclination [°]	Azimuth [°]	TVD [ft]	Vert Sect [ft]	North [ft]	East [ft]	Grid East [US ft]	Grid North [US ft]	Latitude	Longitude	DLS [°/100ft]	Comments
5648.00	1.300	286.200	5647.00	-6.11	-55.19	-60.87	3249894.01	1497005.21	40°41'39.070"N	104°35'55.758"W	0.24	
5743.00	1.400	278.800	5741.98	-8.02	-54.71	-63.05	3249891.83	1497005.69	40°41'39.075"N	104°35'55.786"W	0.21	
5840.00	1.500	276.000	5838.94	-10.00	-54.40	-65.49	3249889.40	1497006.00	40°41'39.078"N	104°35'55.818"W	0.13	
5935.00	1.400	267.200	5933.91	-11.79	-54.32	-67.88	3249887.00	1497006.08	40°41'39.079"N	104°35'55.849"W	0.26	
6033.00	1.200	271.900	6031.89	-13.38	-54.35	-70.10	3249884.78	1497006.05	40°41'39.079"N	104°35'55.878"W	0.23	
6128.00	1.400	279.500	6126.86	-15.09	-54.12	-72.24	3249882.64	1497006.28	40°41'39.082"N	104°35'55.905"W	0.28	
6223.00	1.500	275.700	6221.83	-17.03	-53.81	-74.62	3249880.26	1497006.59	40°41'39.085"N	104°35'55.936"W	0.15	
6320.00	1.000	271.600	6318.81	-18.66	-53.66	-76.73	3249878.15	1497006.74	40°41'39.087"N	104°35'55.964"W	0.52	
6416.00	0.800	248.300	6414.80	-19.57	-53.88	-78.19	3249876.69	1497006.52	40°41'39.085"N	104°35'55.983"W	0.43	
6512.00	0.600	246.500	6510.79	-20.04	-54.33	-79.28	3249875.60	1497006.07	40°41'39.080"N	104°35'55.997"W	0.21	
6608.00	0.700	271.400	6606.79	-20.68	-54.52	-80.32	3249874.56	1497005.88	40°41'39.079"N	104°35'56.010"W	0.31	
6703.00	0.600	265.300	6701.78	-21.44	-54.54	-81.40	3249873.48	1497005.86	40°41'39.078"N	104°35'56.024"W	0.13	
6718.00	0.400	266.000	6716.78	-21.52	-54.55	-81.53	3249873.35	1497005.85	40°41'39.078"N	104°35'56.026"W	1.33	
6805.00	3.300	104.300	6803.74	-19.54	-55.19	-79.41	3249875.48	1497005.21	40°41'39.072"N	104°35'55.999"W	4.23	
6837.00	7.300	116.600	6835.59	-16.79	-56.33	-76.69	3249878.19	1497004.07	40°41'39.060"N	104°35'55.964"W	12.92	
6869.00	9.200	118.100	6867.26	-12.38	-58.45	-72.62	3249882.26	1497001.95	40°41'39.039"N	104°35'55.911"W	5.97	
6901.00	11.000	113.600	6898.76	-7.05	-60.88	-67.56	3249887.32	1496999.52	40°41'39.014"N	104°35'55.846"W	6.14	
6934.00	14.600	113.800	6930.94	-0.17	-63.82	-60.87	3249894.01	1496996.59	40°41'38.985"N	104°35'55.759"W	10.91	
6965.00	18.000	115.000	6960.69	8.05	-67.42	-52.95	3249901.93	1496992.98	40°41'38.948"N	104°35'55.657"W	11.02	
6997.00	21.000	115.900	6990.85	18.21	-72.01	-43.31	3249911.57	1496988.39	40°41'38.902"N	104°35'55.532"W	9.42	
7029.00	25.200	116.700	7020.28	30.20	-77.58	-32.06	3249922.82	1496982.82	40°41'38.846"N	104°35'55.387"W	13.16	
7061.00	28.600	117.300	7048.81	44.07	-84.16	-19.17	3249935.71	1496976.24	40°41'38.780"N	104°35'55.220"W	10.66	
7093.00	31.400	116.900	7076.52	59.42	-91.44	-4.92	3249949.96	1496968.96	40°41'38.706"N	104°35'55.036"W	8.77	
7125.00	36.200	117.500	7103.11	76.50	-99.58	10.90	3249965.78	1496960.82	40°41'38.624"N	104°35'54.832"W	15.04	
7156.00	40.200	118.100	7127.46	94.95	-108.53	27.85	3249982.73	1496951.88	40°41'38.534"N	104°35'54.613"W	12.96	
7188.00	44.000	118.100	7151.20	115.62	-118.63	46.77	3250001.65	1496941.77	40°41'38.432"N	104°35'54.369"W	11.88	
7220.00	48.700	119.200	7173.28	137.99	-129.73	67.08	3250021.96	1496930.67	40°41'38.321"N	104°35'54.107"W	14.90	
7252.00	52.600	121.000	7193.57	162.06	-142.15	88.48	3250043.36	1496918.25	40°41'38.196"N	104°35'53.831"W	12.94	
7284.00	55.800	123.200	7212.29	187.49	-155.95	110.46	3250065.33	1496904.46	40°41'38.057"N	104°35'53.547"W	11.45	
7317.00	57.900	123.800	7230.33	214.70	-171.20	133.49	3250088.37	1496889.21	40°41'37.904"N	104°35'53.250"W	6.54	
7349.00	60.400	124.800	7246.74	241.81	-186.68	156.18	3250111.06	1496873.72	40°41'37.749"N	104°35'52.958"W	8.26	
7381.00	61.500	126.400	7262.28	269.52	-202.96	178.93	3250133.80	1496857.44	40°41'37.586"N	104°35'52.665"W	5.56	
7413.00	62.000	127.600	7277.43	297.52	-219.93	201.44	3250156.32	1496840.47	40°41'37.416"N	104°35'52.375"W	3.65	
7446.00	63.300	130.400	7292.59	326.74	-238.38	224.21	3250179.09	1496822.03	40°41'37.231"N	104°35'52.081"W	8.50	
7478.00	65.000	132.700	7306.54	355.51	-257.48	245.76	3250200.63	1496802.93	40°41'37.040"N	104°35'51.804"W	8.37	
7509.00	67.300	133.800	7319.08	383.86	-276.90	266.41	3250221.28	1496783.50	40°41'36.846"N	104°35'51.539"W	8.10	
7541.00	70.600	134.400	7330.57	413.72	-297.69	287.85	3250242.72	1496762.72	40°41'36.639"N	104°35'51.263"W	10.46	
7574.00	72.800	134.600	7340.93	445.05	-319.64	310.19	3250265.07	1496740.76	40°41'36.420"N	104°35'50.976"W	6.69	
7605.00	75.000	134.000	7349.53	474.83	-340.44	331.51	3250286.38	1496719.96	40°41'36.212"N	104°35'50.702"W	7.34	
7637.00	77.200	133.500	7357.21	505.89	-361.92	353.95	3250308.82	1496698.48	40°41'35.998"N	104°35'50.414"W	7.04	
7669.00	80.200	131.900	7363.48	537.26	-383.20	377.01	3250331.88	1496677.21	40°41'35.785"N	104°35'50.117"W	10.58	
7701.00	82.200	132.400	7368.38	568.87	-404.42	400.45	3250355.32	1496655.99	40°41'35.573"N	104°35'49.816"W	6.44	
7732.00	82.300	131.800	7372.56	599.58	-425.01	423.24	3250378.11	1496635.39	40°41'35.367"N	104°35'49.522"W	1.94	
7764.00	83.500	131.800	7376.51	631.32	-446.18	446.91	3250401.79	1496614.23	40°41'35.156"N	104°35'49.218"W	3.75	
7796.00	87.100	131.100	7379.14	663.18	-467.29	470.81	3250425.69	1496593.12	40°41'34.945"N	104°35'48.910"W	11.46	



Actual Wellpath Report

OWL CREEK 8-64-6-1A AWP

Page 4 of 7



REFERENCE WELLPATH IDENTIFICATION

Operator	MARATHON OIL COMPANY	Slot	SLOT#01 OWL CREEK 8-64-6-1A (600'FNL & 605'FWL, SEC.6)
Area	COLORADO	Well	OWL CREEK 8-64-6-1A
Field	WELD COUNTY (NAD 83, GRID NORTH)	Wellbore	OWL CREEK 8-64-6-1A AWB
Facility	SEC.06-T8N-R64W		

WELLPATH DATA (146 stations)

MD [ft]	Inclination [°]	Azimuth [°]	TVD [ft]	Vert Sect [ft]	North [ft]	East [ft]	Grid East [US ft]	Grid North [US ft]	Latitude	Longitude	DLS [°/100ft]	Comments
7828.00	89.500	131.300	7380.09	695.14	-488.35	494.88	3250449.75	1496572.06	40°41'34.734"N	104°35'48.601"W	7.53	
7860.00	90.200	131.100	7380.17	727.11	-509.43	518.95	3250473.83	1496550.98	40°41'34.524"N	104°35'48.291"W	2.28	
7892.00	91.000	130.700	7379.83	759.08	-530.38	543.14	3250498.01	1496530.03	40°41'34.314"N	104°35'47.980"W	2.80	
7923.00	91.600	131.000	7379.13	790.03	-550.65	566.58	3250521.46	1496509.76	40°41'34.111"N	104°35'47.678"W	2.16	
7935.00	91.900	130.500	7378.76	802.02	-558.48	575.67	3250530.54	1496501.93	40°41'34.033"N	104°35'47.561"W	4.86	
8045.00	90.700	131.600	7376.27	911.88	-630.70	658.60	3250613.47	1496429.71	40°41'33.311"N	104°35'46.494"W	1.48	
8139.00	89.700	132.500	7375.94	1005.85	-693.66	728.40	3250683.27	1496366.75	40°41'32.682"N	104°35'45.597"W	1.43	
8235.00	88.200	134.400	7377.70	1101.82	-759.66	798.08	3250752.94	1496300.75	40°41'32.023"N	104°35'44.701"W	2.52	
8330.00	87.800	133.900	7381.02	1196.76	-825.79	866.20	3250821.07	1496234.62	40°41'31.363"N	104°35'43.825"W	0.67	
8426.00	87.200	133.300	7385.20	1292.67	-891.93	935.65	3250890.52	1496168.48	40°41'30.702"N	104°35'42.933"W	0.88	
8522.00	88.700	134.500	7388.64	1388.60	-958.45	1004.78	3250959.64	1496101.96	40°41'30.038"N	104°35'42.044"W	2.00	
8619.00	88.900	132.800	7390.67	1485.57	-1025.39	1074.95	3251029.81	1496035.03	40°41'29.370"N	104°35'41.142"W	1.76	
8715.00	90.000	132.700	7391.59	1581.56	-1090.55	1145.44	3251100.30	1495969.87	40°41'28.719"N	104°35'40.236"W	1.15	
8811.00	89.200	131.900	7392.26	1677.53	-1155.16	1216.44	3251171.30	1495905.26	40°41'28.073"N	104°35'39.323"W	1.18	
8908.00	89.000	131.900	7393.78	1774.48	-1219.93	1288.63	3251243.49	1495840.49	40°41'27.426"N	104°35'38.394"W	0.21	
9004.00	88.500	132.800	7395.88	1870.44	-1284.58	1359.56	3251314.42	1495775.83	40°41'26.780"N	104°35'37.482"W	1.07	
9100.00	88.500	132.400	7398.39	1966.39	-1349.54	1430.20	3251385.06	1495710.88	40°41'26.131"N	104°35'36.574"W	0.42	
9196.00	87.600	131.800	7401.66	2062.30	-1413.87	1501.39	3251456.24	1495646.56	40°41'25.488"N	104°35'35.658"W	1.13	
9293.00	87.500	131.000	7405.80	2159.15	-1477.95	1574.08	3251528.94	1495582.47	40°41'24.848"N	104°35'34.723"W	0.83	
9389.00	88.200	130.800	7409.41	2254.98	-1540.76	1646.59	3251601.45	1495519.66	40°41'24.220"N	104°35'33.790"W	0.76	
9485.00	85.600	131.800	7414.60	2350.75	-1604.02	1718.60	3251673.45	1495456.40	40°41'23.587"N	104°35'32.864"W	2.90	
9582.00	86.900	132.300	7420.94	2447.51	-1668.85	1790.47	3251745.32	1495391.57	40°41'22.939"N	104°35'31.939"W	1.44	
9678.00	89.100	134.800	7424.29	2543.44	-1734.95	1860.00	3251814.85	1495325.48	40°41'22.279"N	104°35'31.046"W	3.47	
9773.00	88.600	133.100	7426.20	2638.41	-1800.86	1928.38	3251883.23	1495259.56	40°41'21.621"N	104°35'30.167"W	1.86	
9868.00	88.900	133.800	7428.27	2733.39	-1866.18	1997.33	3251952.18	1495194.25	40°41'20.969"N	104°35'29.281"W	0.80	
9965.00	92.600	135.100	7427.00	2830.35	-1934.09	2066.55	3252021.40	1495126.34	40°41'20.291"N	104°35'28.391"W	4.04	
10062.00	94.000	135.100	7421.42	2927.15	-2002.68	2134.91	3252089.75	1495057.75	40°41'19.606"N	104°35'27.513"W	1.44	
10157.00	95.800	134.400	7413.30	3021.78	-2069.32	2202.12	3252156.97	1494991.11	40°41'18.941"N	104°35'26.649"W	2.03	
10253.00	93.200	134.500	7405.77	3117.46	-2136.33	2270.44	3252225.28	1494924.10	40°41'18.272"N	104°35'25.772"W	2.71	
10348.00	90.900	133.900	7402.37	3212.39	-2202.51	2338.49	3252293.34	1494857.92	40°41'17.611"N	104°35'24.897"W	2.50	
10444.00	91.200	133.800	7400.61	3308.37	-2269.01	2407.71	3252362.56	1494791.42	40°41'16.947"N	104°35'24.007"W	0.33	
10540.00	88.300	133.300	7401.03	3404.36	-2335.14	2477.28	3252432.13	1494725.29	40°41'16.286"N	104°35'23.113"W	3.07	
10635.00	88.100	133.100	7404.02	3499.31	-2400.14	2546.50	3252501.34	1494660.29	40°41'15.637"N	104°35'22.223"W	0.30	
10732.00	88.000	133.600	7407.32	3596.25	-2466.69	2617.00	3252571.84	1494593.75	40°41'14.973"N	104°35'21.317"W	0.53	
10828.00	88.800	132.600	7410.00	3692.21	-2532.26	2687.06	3252641.90	1494528.18	40°41'14.318"N	104°35'20.416"W	1.33	
10924.00	90.300	133.800	7410.75	3788.20	-2597.97	2757.04	3252711.88	1494462.47	40°41'13.661"N	104°35'19.517"W	2.00	
11020.00	89.600	134.300	7410.84	3884.20	-2664.72	2826.04	3252780.87	1494395.72	40°41'12.995"N	104°35'18.630"W	0.90	
11116.00	94.300	139.000	7407.57	3979.95	-2734.44	2891.86	3252846.70	1494326.00	40°41'12.299"N	104°35'17.785"W	6.92	
11212.00	93.700	137.600	7400.87	4075.38	-2805.94	2955.57	3252910.40	1494254.50	40°41'11.586"N	104°35'16.968"W	1.58	
11307.00	94.100	137.400	7394.41	4169.93	-2875.82	3019.60	3252974.44	1494184.62	40°41'10.889"N	104°35'16.146"W	0.47	
11404.00	93.100	137.200	7388.32	4266.53	-2946.97	3085.25	3253040.09	1494113.48	40°41'10.180"N	104°35'15.303"W	1.05	
11499.00	92.000	137.000	7384.09	4361.25	-3016.49	3149.86	3253104.69	1494043.96	40°41'09.486"N	104°35'14.474"W	1.18	
11595.00	90.900	135.800	7381.66	4457.10	-3085.98	3216.04	3253170.87	1493974.46	40°41'08.793"N	104°35'13.624"W	1.70	
11690.00	89.900	137.300	7381.00	4551.96	-3154.95	3281.37	3253236.20	1493905.50	40°41'08.105"N	104°35'12.786"W	1.90	
11787.00	89.000	133.800	7381.93	4648.88	-3224.18	3349.28	3253304.11	1493836.27	40°41'07.414"N	104°35'11.913"W	3.73	



Actual Wellpath Report

OWL CREEK 8-64-6-1A AWP

Page 5 of 7



REFERENCE WELLPATH IDENTIFICATION

Operator	MARATHON OIL COMPANY	Slot	SLOT#01 OWL CREEK 8-64-6-1A (600'FNL & 605'FWL, SEC.6)
Area	COLORADO	Well	OWL CREEK 8-64-6-1A
Field	WELD COUNTY (NAD 83, GRID NORTH)	Wellbore	OWL CREEK 8-64-6-1A AWB
Facility	SEC.06-T8N-R64W		

WELLPATH DATA (146 stations)

MD [ft]	Inclination [°]	Azimuth [°]	TVD [ft]	Vert Sect [ft]	North [ft]	East [ft]	Grid East [US ft]	Grid North [US ft]	Latitude	Longitude	DLS [°/100ft]	Comments
11883.00	91.100	134.200	7381.85	4744.87	-3290.86	3418.33	3253373.16	1493769.59	40°41'06.748"N	104°35'11.026"W	2.23	
11979.00	91.500	134.300	7379.67	4840.84	-3357.83	3487.08	3253441.91	1493702.62	40°41'06.079"N	104°35'10.143"W	0.43	
12074.00	91.700	133.600	7377.02	4935.80	-3423.74	3555.45	3253510.27	1493636.71	40°41'05.421"N	104°35'09.264"W	0.77	
12169.00	91.800	133.300	7374.12	5030.75	-3489.04	3624.38	3253579.21	1493571.41	40°41'04.769"N	104°35'08.378"W	0.33	
12265.00	90.800	133.000	7371.94	5126.72	-3554.68	3694.40	3253649.22	1493505.78	40°41'04.113"N	104°35'07.478"W	1.09	
12361.00	90.000	133.200	7371.27	5222.72	-3620.27	3764.49	3253719.32	1493440.18	40°41'03.458"N	104°35'06.577"W	0.86	
12457.00	90.300	132.300	7371.02	5318.71	-3685.43	3834.99	3253789.81	1493375.02	40°41'02.807"N	104°35'05.671"W	0.99	
12553.00	88.700	133.900	7371.85	5414.70	-3751.02	3905.08	3253859.90	1493309.44	40°41'02.151"N	104°35'04.770"W	2.36	
12649.00	87.900	135.700	7374.70	5510.63	-3818.63	3973.16	3253927.98	1493241.82	40°41'01.476"N	104°35'03.895"W	2.05	
12733.00	87.800	132.200	7377.86	5594.55	-3876.88	4033.59	3253988.40	1493183.58	40°41'00.895"N	104°35'03.119"W	4.17	LAST BHI MWD SURVEY
12808.00	87.800	132.200	7380.73	5669.48	-3927.22	4089.11	3254043.92	1493133.24	40°41'00.392"N	104°35'02.405"W	0.00	PROJECTION TO BIT

HOLE & CASING SECTIONS - Ref Wellbore: OWL CREEK 8-64-6-1A AWB Ref Wellpath: OWL CREEK 8-64-6-1A AWP

String/Diameter	Start MD [ft]	End MD [ft]	Interval [ft]	Start TVD [ft]	End TVD [ft]	Start N/S [ft]	Start E/W [ft]	End N/S [ft]	End E/W [ft]
9.625in Casing Surface	31.00	1284.00	1253.00	31.00	1284.00	-2.25	-0.50	-2.25	-0.50
8.75in Open Hole	1284.00	7999.00	6715.00	1284.00	7377.03	-2.25	-0.50	-600.30	624.08
7in Casing Intermediate	31.00	7990.00	7959.00	31.00	7377.23	-2.25	-0.50	-594.39	617.30
6in Open Hole	7999.00	12808.00	4809.00	7377.03	7380.73	-600.30	624.08	-3927.22	4089.11



Actual Wellpath Report

OWL CREEK 8-64-6-1A AWP

Page 6 of 7



REFERENCE WELLPATH IDENTIFICATION

Operator	MARATHON OIL COMPANY	Slot	SLOT#01 OWL CREEK 8-64-6-1A (600'FNL & 605'FWL, SEC.6)
Area	COLORADO	Well	OWL CREEK 8-64-6-1A
Field	WELD COUNTY (NAD 83, GRID NORTH)	Wellbore	OWL CREEK 8-64-6-1A AWB
Facility	SEC.06-T8N-R64W		

TARGETS

Name	MD [ft]	TVD [ft]	North [ft]	East [ft]	Grid East [US ft]	Grid North [US ft]	Latitude	Longitude	Shape
OWL CREEK 8-64-6-1A BHL ON EXCEL (REV-1)		7375.00	-3924.31	4138.17	3254092.99	1493136.15	40°41'00.416"N	104°35'01.768"W	point
OWL CREEK 8-64-6-1A BHL ON PLAT (600'FSL & 600'FEL,REV-1)		7375.00	-3928.10	4134.01	3254088.83	1493132.36	40°41'00.378"N	104°35'01.822"W	point
OWL CREEK 8-64-6-1A FAULT #1 (REV-1)		7375.00	-1087.86	1145.04	3251099.90	1495972.56	40°41'28.745"N	104°35'40.240"W	point
OWL CREEK 8-64-6-1A FAULT #2 (REV-1)		7375.00	-1438.95	1511.16	3251466.02	1495621.47	40°41'25.239"N	104°35'35.534"W	point
OWL CREEK 8-64-6-1A FAULT #3 (REV-1)		7375.00	-2049.59	2157.85	3252112.70	1495010.84	40°41'19.140"N	104°35'27.221"W	point
OWL CREEK 8-64-6-1A FAULT #4 (REV-1)		7375.00	-2428.51	2560.14	3252514.98	1494631.93	40°41'15.356"N	104°35'22.050"W	point
OWL CREEK 8-64-6-1A FAULT #5 (REV-1)		7375.00	-3564.28	3758.00	3253712.82	1493496.17	40°41'04.012"N	104°35'06.654"W	point
OWL CREEK 8-64-6-1A FAULT #6 (REV-1)		7375.00	-3865.63	4076.82	3254031.64	1493194.83	40°41'01.002"N	104°35'02.556"W	point
OWL CREEK 8-64-6-1A SECTION LINES		7375.00	0.00	0.00	3249954.88	1497060.40	40°41'39.609"N	104°35'54.960"W	polygon
OWL CREEK 8-64-6-1A LANDING (REV-1)		7378.00	-394.65	414.86	3250369.73	1496665.76	40°41'35.668"N	104°35'49.627"W	point

WELLPATH COMPOSITION - Ref Wellbore: OWL CREEK 8-64-6-1A AWB Ref Wellpath: OWL CREEK 8-64-6-1A AWP

Start MD [ft]	End MD [ft]	Positional Uncertainty Model	Log Name/Comment	Wellbore
1351.00	7935.00	NaviTrak (Standard)	BHI MWD SURVEYS NAVITRAK 8.75 HOLE <1447-7935>	OWL CREEK 8-64-6-1A AWB
7935.00	12733.00	NaviTrak (Standard)	BHI MWD SURVEYS NAVITRAK 6 HOLE <8045-12733>	OWL CREEK 8-64-6-1A AWB
12733.00	12808.00	Blind Drilling (std)	Projection to bit	OWL CREEK 8-64-6-1A AWB

**Actual Wellpath Report**

OWL CREEK 8-64-6-1A AWP

Page 7 of 7

**REFERENCE WELLPATH IDENTIFICATION**

Operator	MARATHON OIL COMPANY	Slot	SLOT#01 OWL CREEK 8-64-6-1A (600'FNL & 605'FWL, SEC.6)
Area	COLORADO	Well	OWL CREEK 8-64-6-1A
Field	WELD COUNTY (NAD 83, GRID NORTH)	Wellbore	OWL CREEK 8-64-6-1A AWB
Facility	SEC.06-T8N-R64W		

WELLPATH COMMENTS

MD [ft]	Inclination [°]	Azimuth [°]	TVD [ft]	Comment
1351.00	0.200	192.500	1351.00	TIED INTO SURFACE CASING
12733.00	87.800	132.200	7377.86	LAST BHI MWD SURVEY
12808.00	87.800	132.200	7380.73	PROJECTION TO BIT