

# HALLIBURTON

## Cementing Job Summary

*The Road to Excellence Starts with Safety*

Sold To #: 300721	Ship To #: 2884186	Quote #:	Sales Order #: 8542168
Customer: WILLIAMS PRODUCTION RMT INC - EBUS	Customer Rep: Nicholas, Larry		
Well Name: RWF	Well #: 34-31	API/UWI #: 05-045-19783	
Field: Rulison	City (SAP): RIFLE	County/Parish: Garfield	State: Colorado
Lat: N 39.475 deg. OR N 39 deg. 28 min. 30.821 secs.	Long: W 107.929 deg. OR W -108 deg. 4 min. 14.383 secs.		
Contractor: NABORS	Rig/Platform Name/Num: NABORS 576		
Job Purpose: Cement Surface Casing			
Well Type: Development Well	Job Type: Cement Surface Casing		
Sales Person: MAYO, MARK	Srvc Supervisor: KUKUS, CRAIG	MBU ID Emp #: 369124	

### Job Personnel

HES Emp Name	Exp Hrs	Emp #	HES Emp Name	Exp Hrs	Emp #	HES Emp Name	Exp Hrs	Emp #
KEANE, JOHN Donovan	6	486519	KUKUS, CRAIG A	6	369124	WYCKOFF, RYAN Scott	6	476117

### Equipment

HES Unit #	Distance-1 way	HES Unit #	Distance-1 way	HES Unit #	Distance-1 way	HES Unit #	Distance-1 way
10867304	60 mile	10871245	60 mile	10998054	60 mile	11259883	60 mile
11360881	60 mile						

### Job Hours

Date	On Location Hours	Operating Hours	Date	On Location Hours	Operating Hours	Date	On Location Hours	Operating Hours
11/9/11	6	2.5						

TOTAL Total is the sum of each column separately

### Job

### Job Times

Formation Name	Formation Depth (MD)	Top	Bottom	Form Type	Job depth MD	Job Depth TVD	Water Depth	Perforation Depth (MD)	From	To	Called Out	Date	Time	Time Zone
				BHST	1170. ft	1170. ft	4. ft					08 - Nov - 2011	21:45	MST
											On Location	09 - Nov - 2011	01:00	MST
											Job Started	09 - Nov - 2011	08:10	MST
											Job Completed	09 - Nov - 2011	08:56	MST
											Departed Loc	09 - Nov - 2011	10:20	MST

### Well Data

Description	New / Used	Max pressure psig	Size in	ID in	Weight lbm/ft	Thread	Grade	Top MD ft	Bottom MD ft	Top TVD ft	Bottom TVD ft
-------------	------------	-------------------	---------	-------	---------------	--------	-------	-----------	--------------	------------	---------------

### Sales/Rental/3<sup>rd</sup> Party (HES)

Description	Qty	Qty uom	Depth	Supplier
PLUG,CMTG,TOP,9 5/8,HWE,8.16 MIN/9.06 MA	1	EA		

### Tools and Accessories

Type	Size	Qty	Make	Depth	Type	Size	Qty	Make	Depth	Type	Size	Qty	Make
Guide Shoe					Packer					Top Plug	9 5/8	1	HES
Float Shoe					Bridge Plug					Bottom Plug			
Float Collar					Retainer					SSR plug set			
Insert Float										Plug Container	9 5/8	1	HES
Stage Tool										Centralizers			

### Miscellaneous Materials

Gelling Agt	Conc	Surfactant	Conc	Acid Type	Qty	Conc	%
Treatment Fld	Conc	Inhibitor	Conc	Sand Type	Size	Qty	

### Fluid Data

Stage/Plug #: 1	Fluid #	Stage Type	Fluid Name	Qty	Qty uom	Mixing Density lbm/gal	Yield ft/sk	Mix Fluid Gal/sk	Rate bbl/min	Total Mix Fluid Gal/sk
-----------------	---------	------------	------------	-----	---------	------------------------	-------------	------------------	--------------	------------------------

Stage/Plug #: 1

# HALLIBURTON

## Cementing Job Summary

Stage/Plug #: 1									
Fluid #	Stage Type	Fluid Name	Qty	Qty uom	Mixing Density lbm/gal	Yield ft <sup>3</sup> /sk	Mix Fluid Gal/sk	Rate bbl/min	Total Mix Fluid Gal/sk
1	Water Spacer		20.00	bbl	8.34	.0	.0	4	
2	Lead Cement	VERSACEM (TM) SYSTEM (452010)	160.0	sacks	12.3	2.38	13.75	8	13.75
	13.75 Gal	FRESH WATER							
3	Tail Cement	VERSACEM (TM) SYSTEM (452010)	160.0	sacks	12.8	2.11	11.75	8	11.75
	11.75 Gal	FRESH WATER							
4	Displacement Fluid		87.00	bbl	8.34	.0	.0	10	
Calculated Values		Pressures		Volumes					
Displacement	87.1	Shut In: Instant		Lost Returns	0	Cement Slurry	128	Pad	
Top Of Cement	SURFACE	5 Min		Cement Returns	17	Actual Displacement	87	Treatment	
Frac Gradient		15 Min		Spacers	20	Load and Breakdown		Total Job	235
Rates									
Circulating	RIG	Mixing	8	Displacement	10	Avg. Job	9		
Cement Left In Pipe	Amount	43 ft	Reason	Shoe Joint					
Frac Ring # 1 @	ID	Frac ring # 2 @	ID	Frac Ring # 3 @	ID	Frac Ring # 4 @	ID		
The Information Stated Herein Is Correct				Customer Representative Signature					

# HALLIBURTON

## Cementing Job Log

*The Road to Excellence Starts with Safety*

Sold To #: 300721	Ship To #: 2884186	Quote #:	Sales Order #: 8542168
Customer: WILLIAMS PRODUCTION RMT INC - EBUS	Customer Rep: Nicholas, Larry		
Well Name: RWF	Well #: 34-31	API/UWI #: 05-045-19783	
Field: Rulison	City (SAP): RIFLE	County/Parish: Garfield	State: Colorado
Legal Description:			
Lat: N 39.475 deg. OR N 39 deg. 28 min. 30.821 secs.		Long: W 107.929 deg. OR W -108 deg. 4 min. 14.383 secs.	
Contractor: NABORS	Rig/Platform Name/Num: NABORS 576		
Job Purpose: Cement Surface Casing			Ticket Amount:
Well Type: Development Well		Job Type: Cement Surface Casing	
Sales Person: MAYO, MARK	Srv Supervisor: KUKUS, CRAIG	MBU ID Emp #: 369124	

Activity Description	Date/Time	Cht #	Rate bbl/min	Volume bbl		Pressure psig		Comments
				Stage	Total	Tubing	Casing	
Call Out	11/08/2011 21:45							
Depart Yard Safety Meeting	11/08/2011 23:30							SAFETY MEETING INVOLVING THE ENTIRE CMT CREW
Arrive At Loc	11/09/2011 01:00							RIG STILL DRILLING/ STARTED RUNNING CSG 03:15
Assessment Of Location Safety Meeting	11/09/2011 01:15							ASSESSMENT OF LOCATION INVOLVING THE ENTIRE CMT CREW
Pre-Rig Up Safety Meeting	11/09/2011 07:00							SAFETY MEETING INVOLVING THE ENTIRE CMT CREW
Circulate Well	11/09/2011 07:00							RIG CIRCULATE THRU HES CEMENT HEAD
Rig-Up Equipment	11/09/2011 07:05							RIG UP IRON TO STAND PIPE / WATER TO UP RIGHT AND DAY TANK
Pre-Job Safety Meeting	11/09/2011 07:55							SAFETY MEETING INVOLVING EVERYONE ON LOCATION
Start Job	11/09/2011 08:10							TD 1170 FT TP 1150 FT SJ 43 FT OH 13.5 IN MUD WT 10.2# PIPE 9 5/8 IN 32.3#
Other	11/09/2011 08:10		2	2			152.0	FILL LINES WITH FRESH WATER
Pressure Test	11/09/2011 08:12		0.5			3500.0		PRESSURE TEST GOOD
Pump Spacer 1	11/09/2011 08:15		4	20			183.0	FRESH WATER SPACER

Sold To #: 300721

Ship To #: 2884186

Quote #:

Sales Order #: 8542168

SUMMIT Version: 7.2.27

Saturday, November 12, 2011 10:29:00

# HALLIBURTON

## Cementing Job Log

Activity Description	Date/Time	Cht #	Rate bbl/ min	Volume bbl		Pressure psig		Comments
				Stage	Total	Tubing	Casing	
Pump Lead Cement	11/09/2011 08:21		8	67.8			408.0	PUMP 160 SKS LEAD CEMENT AT 12.3 PPG 2.38 Y 13.75 GAL/SK
Pump Tail Cement	11/09/2011 08:31		8	60.1			433.0	PUMP 160 SKS TAIL CEMENT AT 12.8 PPG 2.11 Y 11.75 GAL/SK
Shutdown	11/09/2011 08:38							READY TUB FOR WASH OUT ON TOP OF PLUG
Drop Top Plug	11/09/2011 08:42							PLUG LEFT THE PLUG CONTAINER
Pump Displacement	11/09/2011 08:42		10	87.1			598.0	PUMP FRESH WATER DISPLACEMENT
Slow Rate	11/09/2011 08:52		2	77			344.0	SLOW RATE LAST 10 BBLs 2 BBL MIN
Bump Plug	11/09/2011 08:56		2	87.1			933.0	PLUG LANDED AT 316 PSI
Check Floats	11/09/2011 08:57							FLOATS HELD / GOT 3/4 BBL BACK TO TANKS
End Job	11/09/2011 08:59							HAD GOOD RETURNS THRU OUT THE JOB / CEMENT TO SURFACE TOTAL BBLs 17 OF CEMENT
Pre-Rig Down Safety Meeting	11/09/2011 09:05							SAFETY MEETING INVOLVING THE ENTIRE CMT CREW
Rig-Down Equipment	11/09/2011 09:10							RIG FLOOR DOWN / WASH UP AND BLOW DOWN
Safety Meeting - Departing Location	11/09/2011 10:10							SAFETY MEETING INVOLVING THE ENTIRE CMT CREW
Comment	11/09/2011 10:20							THANK YOU FOR USING HALLIBURTON, CRAIG KUKUS AND CREW

Sold To # : 300721

Ship To # : 2884186

Quote # :

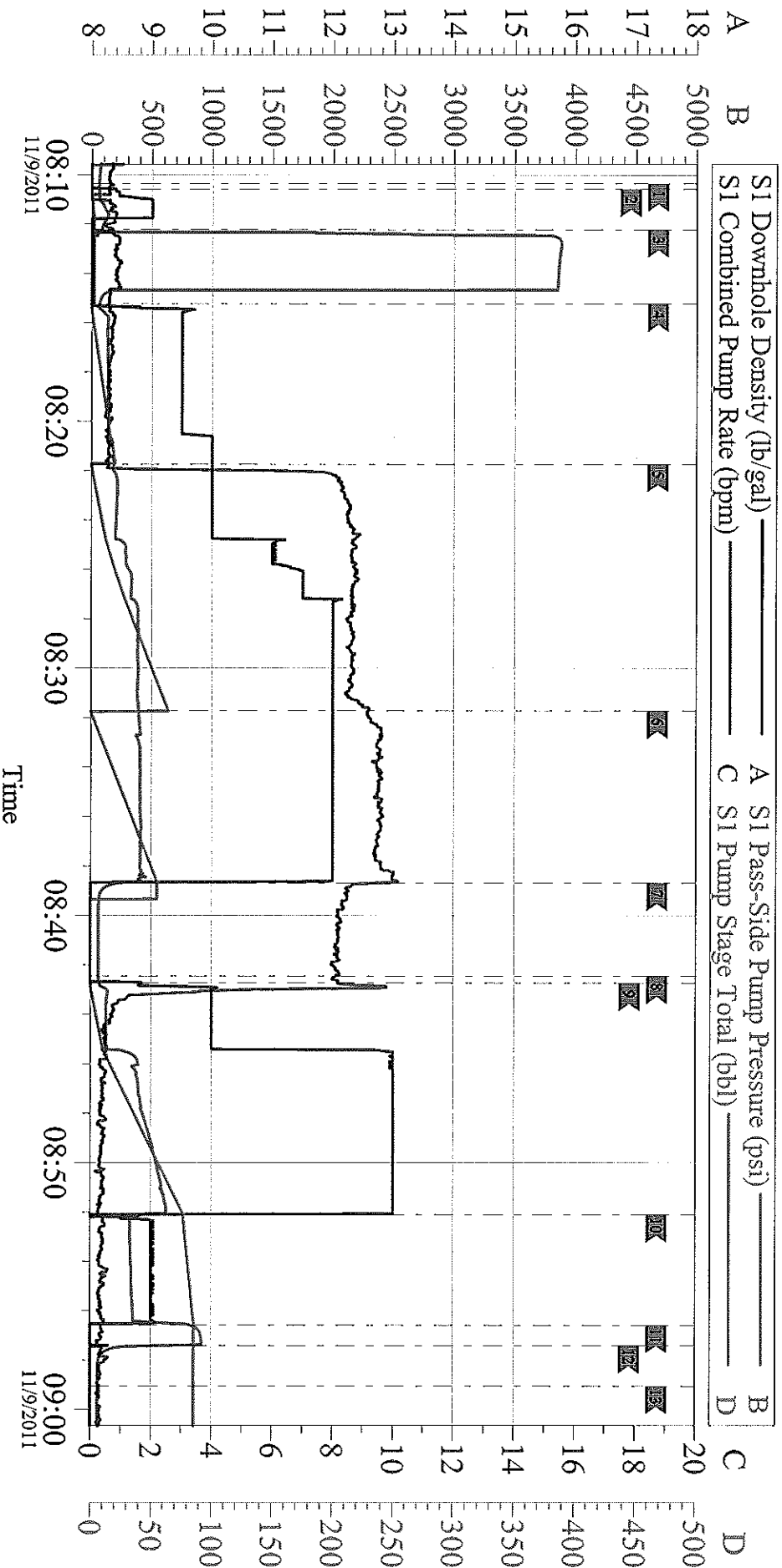
Sales Order # : 8542168

SUMMIT Version: 7.2.27

Saturday, November 12, 2011 10:29:00

# WILLIAMS PRODUCTION RWF 34-31

## 9 5/8 SURFACE



### Local Event Log

START JOB	08:10:21	PRIME LINES	08:10:35	PRESSURE TEST LINES	08:12:13
PUMP H2O SPACER AHEAD	08:15:14	PUMP LEAD CEMENT	08:21:44	PUMP TAIL CEMENT	08:31:43
SHUT DOWN	08:38:41	DROP PLUG	08:42:27	PUMP H2O DISPLACEMENT	08:42:44
SLOW RATE	08:52:06	BUMP PLUG	08:56:36	CHECK FLOATS	08:57:25
END JOB	08:59:03				

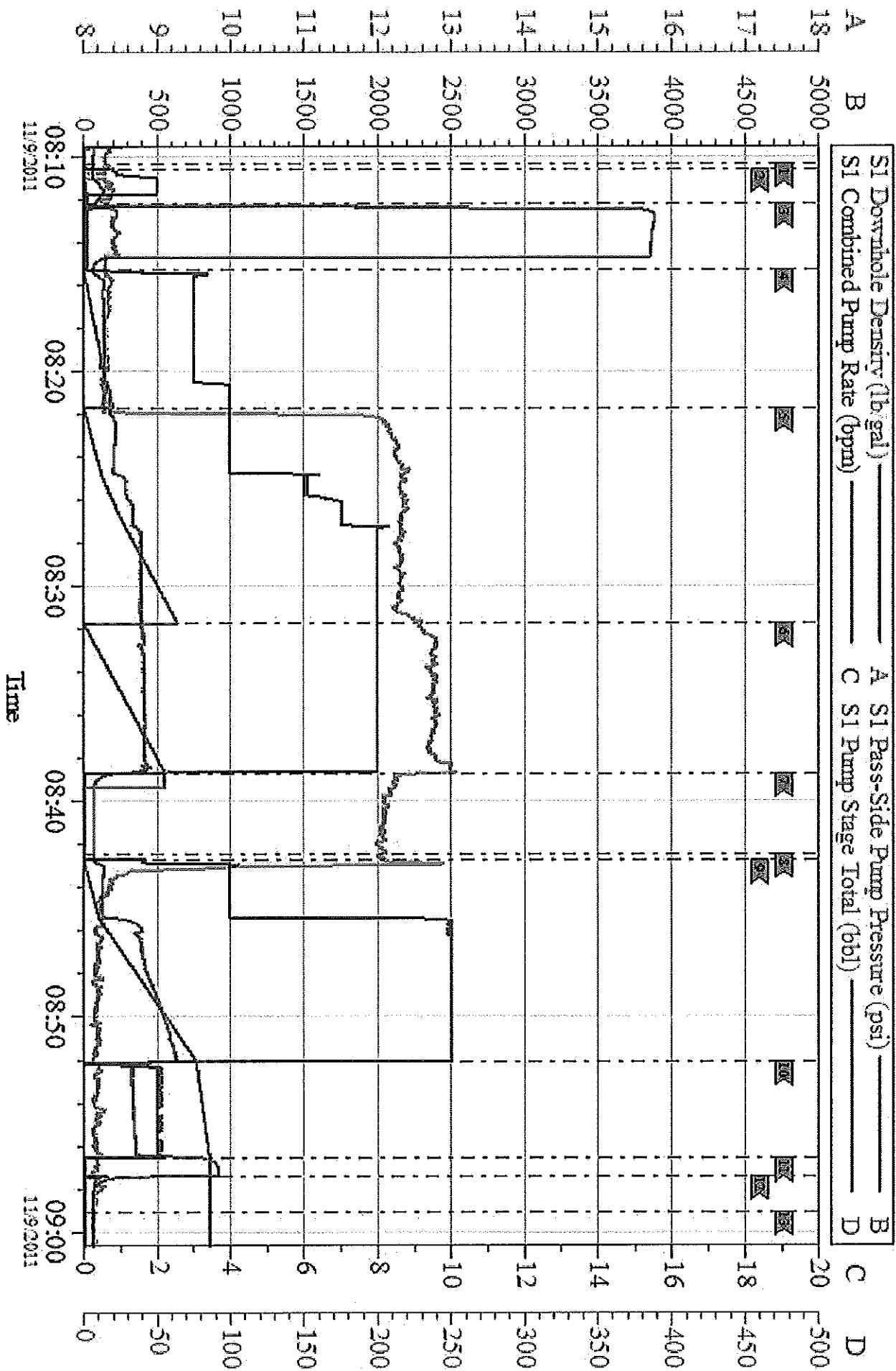
Customer: WILLIAMS PRODUCTION  
Well Description: RWF34-31  
Company Rep: LARRY NICHOLAS

Job Date: 09-Nov-2011  
Job Type: SURFACE  
Cement Supervisor: CRAIG KUKUS

Sales Order #: 8542168  
ADC Used: YES  
Elite #Operator: E 8 RYAN WYCKOFF

# WILLIAMS PRODUCTION RWF 34-31

## 9 5/8 SURFACE



Customer	WILLIAMS PRODUCTION	Job Date:	09-Nov-2011	Sales Order #:	8542168
Well Description	RWF34-31	Job Type:	SURFACE	ADC Used	YES
Company Rep:	LARRY NICHOLAS	Cement Supervisor:	CRAIG KUNUS	Elite #/Operator:	E 8 RYAN WYCKOFF