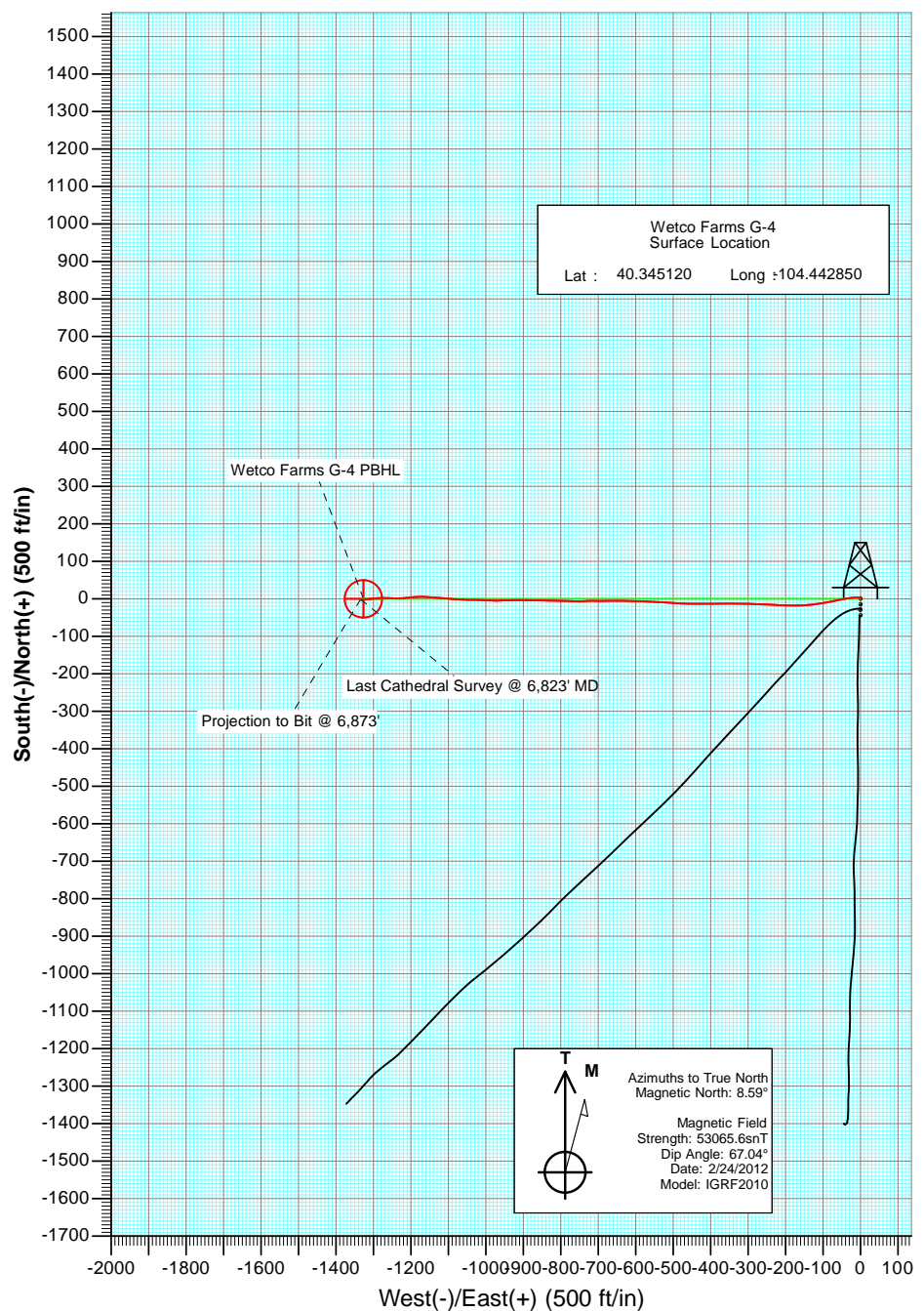
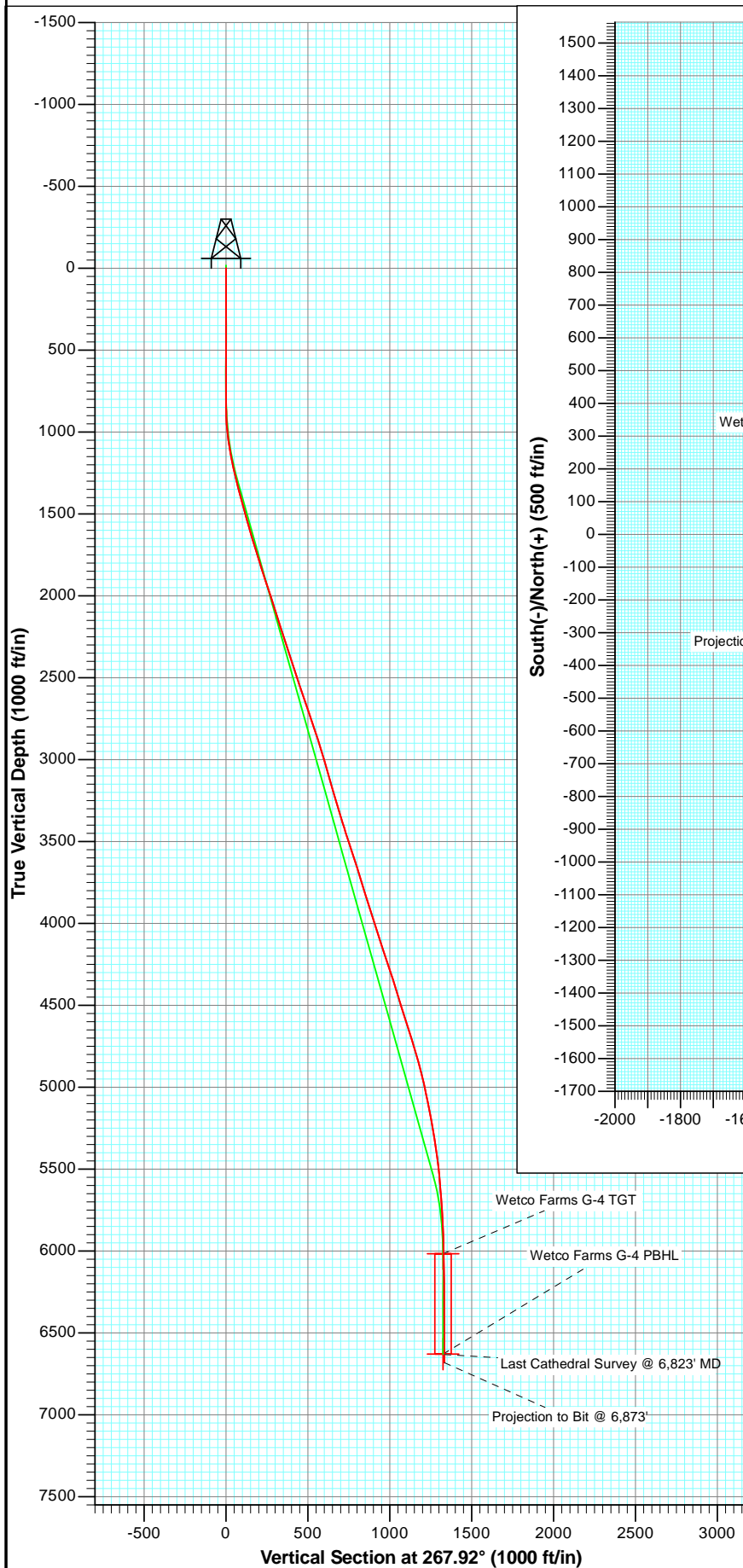




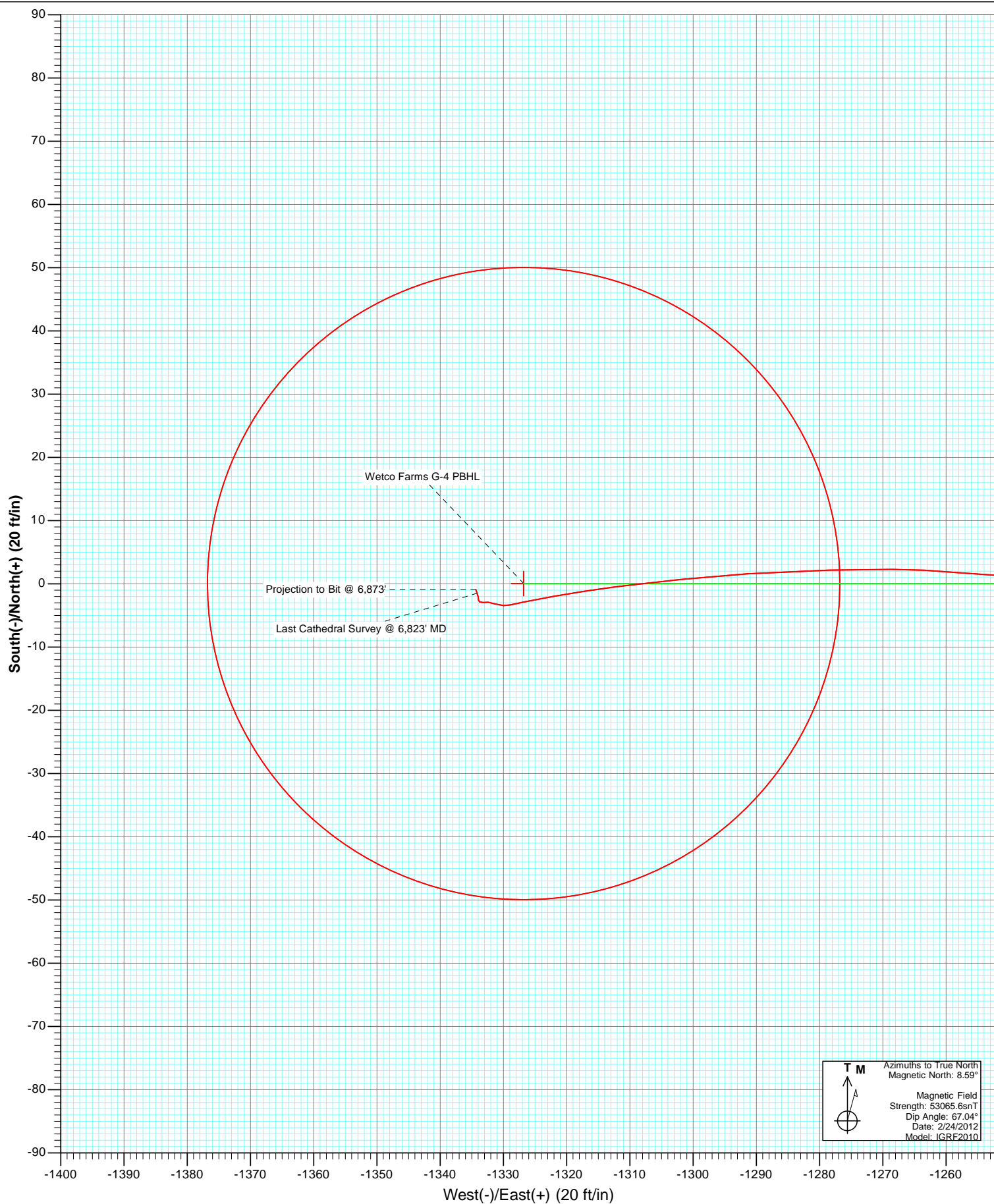
Project: Weld County
Site: Wetco Farms L-4 Pad
Well: Wetco Farms G-4
Wellbore: OH
Plan: AB FINAL



OH Wetco Farms G-4 125204/148655, SC						
KBE @ 4575.0ft (Mid Con 12) North American Datum 1983 Well Wetco Farms G-4, True North						
Type	Target	Azimuth	Origin Type	N/S	E/W	From TVD
User	No Target (Freehand)	267.92	Slot	0.0	0.0	0.0
Name	TVD	+N/-S	+E/-W	Latitude	Longitude	
Wetco Farms G-4 TGT	6017.0	0.1	-1326.8	40.345120	-104.447610	
Wetco Farms G-4 PBHL	6629.0	0.1	-1326.8	40.345120	-104.447610	



Project: Weld County
Site: Wetco Farms L-4 Pad
Well: Wetco Farms G-4
Wellbore: OH
Plan: AB FINAL



Cathedral Energy Services

Survey Report

Company:	Bonanza Creek Energy Operating Company, LLC	Local Co-ordinate Reference:	Well Wetco Farms G-4
Project:	Weld County	TVD Reference:	KBE @ 4575.0ft (Mid Con 12)
Site:	Wetco Farms L-4 Pad	MD Reference:	KBE @ 4575.0ft (Mid Con 12)
Well:	Wetco Farms G-4	North Reference:	True
Wellbore:	OH	Survey Calculation Method:	Minimum Curvature
Design:	OH	Database:	USA EDM 5000 Multi Users DB

Project	Weld County		
Map System:	US State Plane 1983	System Datum:	Mean Sea Level
Geo Datum:	North American Datum 1983		
Map Zone:	Colorado Northern Zone		

Site		Wetco Farms L-4 Pad			
Site Position:		Northing:	1,370,312.33 ft	Latitude:	40.345080
From:	Lat/Long	Easting:	3,294,651.41 ft	Longitude:	-104.442900
Position Uncertainty:	0.0 ft	Slot Radius:	13.200 in	Grid Convergence:	0.68 °

Well	Wetco Farms G-4					
Well Position	+N/-S	0.0 ft	Northing:	1,370,327.04 ft	Latitude:	40.345120
	+E/-W	0.0 ft	Easting:	3,294,665.18 ft	Longitude:	-104.442850
Position Uncertainty		0.0 ft	Wellhead Elevation:	ft	Ground Level:	4,566.0 ft

Wellbore	OH				
Magnetics	Model Name	Sample Date	Declination (°)	Dip Angle (°)	Field Strength (nT)
	IGRF2010	2/24/2012	8.59	67.04	53,066

Design	OH			
Audit Notes:				
Version:	1.0	Phase:	ACTUAL	Tie On Depth: 0.0
Vertical Section:	Depth From (TVD) (ft)	+N/-S (ft)	+E/-W (ft)	Direction (°)
	0.0	0.0	0.0	267.92

Survey Program	Date	4/24/2012			
From (ft)	To (ft)	Survey (Wellbore)	Tool Name	Description	
812.0	6,873.0	Survey #1 (OH)	MWD	Geolink MWD	

Survey									
Measured Depth (ft)	Inclination (°)	Azimuth (°)	Vertical Depth (ft)	+N/-S (ft)	+E/-W (ft)	Vertical Section (ft)	Dogleg Rate (°/100ft)	Build Rate (°/100ft)	Formations / Comments
0.0	0.00	0.00	0.0	0.0	0.0	0.0	0.00	0.00	
812.0	0.20	340.50	812.0	1.3	-0.5	0.4	0.02	0.02	
906.0	2.20	302.80	906.0	2.5	-2.0	2.0	2.18	2.13	
1,002.0	6.10	273.00	1,001.7	3.7	-8.7	8.5	4.51	4.06	
1,097.0	9.60	264.80	1,095.8	3.3	-21.6	21.5	3.86	3.68	
1,192.0	11.90	258.10	1,189.1	0.5	-39.1	39.1	2.75	2.42	
1,286.0	13.60	259.40	1,280.8	-3.5	-59.4	59.5	1.83	1.81	
1,380.0	15.30	259.40	1,371.8	-7.8	-82.5	82.7	1.81	1.81	
1,474.0	15.00	259.50	1,462.6	-12.3	-106.7	107.0	0.32	-0.32	
1,569.0	16.10	266.30	1,554.1	-15.4	-131.9	132.4	2.24	1.16	
1,663.0	16.60	265.80	1,644.3	-17.2	-158.3	158.8	0.55	0.53	
1,758.0	17.00	270.90	1,735.3	-18.0	-185.7	186.2	1.61	0.42	
1,853.0	17.90	273.50	1,825.9	-16.9	-214.2	214.6	1.25	0.95	

Cathedral Energy Services

Survey Report

Company:	Bonanza Creek Energy Operating Company, LLC	Local Co-ordinate Reference:	Well Wetco Farms G-4
Project:	Weld County	TVD Reference:	KBE @ 4575.0ft (Mid Con 12)
Site:	Wetco Farms L-4 Pad	MD Reference:	KBE @ 4575.0ft (Mid Con 12)
Well:	Wetco Farms G-4	North Reference:	True
Wellbore:	OH	Survey Calculation Method:	Minimum Curvature
Design:	OH	Database:	USA EDM 5000 Multi Users DB

Survey									
Measured Depth (ft)	Inclination (°)	Azimuth (°)	Vertical Depth (ft)	+N/-S (ft)	+E/-W (ft)	Vertical Section (ft)	Dogleg Rate (°/100ft)	Build Rate (°/100ft)	Formations / Comments
1,947.0	18.00	272.10	1,915.3	-15.5	-243.1	243.5	0.47	0.11	
2,041.0	18.70	272.40	2,004.5	-14.3	-272.7	273.0	0.75	0.74	
2,135.0	17.60	271.80	2,093.9	-13.2	-301.9	302.2	1.19	-1.17	
2,230.0	17.60	269.90	2,184.4	-12.8	-330.7	330.9	0.60	0.00	
2,325.0	18.10	270.40	2,274.8	-12.7	-359.8	360.0	0.55	0.53	
2,420.0	18.00	269.00	2,365.2	-12.9	-389.2	389.4	0.47	-0.11	
2,513.0	18.10	269.20	2,453.6	-13.3	-418.0	418.2	0.13	0.11	
2,608.0	18.30	271.10	2,543.8	-13.3	-447.7	447.9	0.66	0.21	
2,703.0	19.00	273.00	2,633.8	-12.2	-478.0	478.2	0.98	0.74	
2,798.0	19.20	273.60	2,723.6	-10.4	-509.1	509.1	0.30	0.21	
2,893.0	17.90	273.10	2,813.7	-8.6	-539.2	539.2	1.38	-1.37	
2,987.0	18.10	272.40	2,903.1	-7.2	-568.3	568.1	0.31	0.21	
3,081.0	17.00	271.90	2,992.7	-6.1	-596.6	596.4	1.18	-1.17	
3,176.0	15.60	271.40	3,083.9	-5.4	-623.2	623.0	1.48	-1.47	
3,240.0	15.90	270.20	3,145.5	-5.1	-640.6	640.4	0.69	0.47	
3,303.0	15.70	269.40	3,206.1	-5.2	-657.8	657.5	0.47	-0.32	
3,366.0	17.00	268.60	3,266.5	-5.5	-675.5	675.2	2.09	2.06	
3,428.0	17.00	270.80	3,325.8	-5.6	-693.6	693.4	1.04	0.00	
3,491.0	17.10	270.60	3,386.1	-5.4	-712.1	711.8	0.18	0.16	
3,553.0	18.10	266.60	3,445.2	-5.8	-730.8	730.5	2.53	1.61	
3,616.0	18.10	269.10	3,505.1	-6.6	-750.4	750.1	1.23	0.00	
3,679.0	18.10	272.20	3,564.9	-6.4	-769.9	769.7	1.53	0.00	
3,772.0	17.80	272.10	3,653.4	-5.3	-798.6	798.2	0.32	-0.32	
3,868.0	16.80	270.40	3,745.1	-4.6	-827.1	826.7	1.17	-1.04	
3,931.0	17.20	271.80	3,805.3	-4.3	-845.5	845.1	0.91	0.63	
3,995.0	17.80	272.10	3,866.4	-3.6	-864.8	864.3	0.95	0.94	
4,089.0	17.20	268.70	3,956.0	-3.4	-893.0	892.5	1.26	-0.64	
4,151.0	18.00	270.00	4,015.1	-3.6	-911.8	911.3	1.44	1.29	
4,245.0	18.30	268.70	4,104.4	-4.0	-941.0	940.6	0.54	0.32	
4,340.0	18.00	268.70	4,194.7	-4.6	-970.6	970.1	0.32	-0.32	
4,434.0	18.90	273.80	4,283.9	-4.0	-1,000.3	999.8	1.97	0.96	
4,527.0	16.80	270.80	4,372.4	-2.8	-1,028.8	1,028.2	2.46	-2.26	
4,591.0	17.10	271.80	4,433.6	-2.3	-1,047.5	1,046.8	0.65	0.47	
4,653.0	18.00	271.70	4,492.7	-1.8	-1,066.1	1,065.5	1.45	1.45	
4,716.0	17.80	274.60	4,552.7	-0.7	-1,085.5	1,084.8	1.45	-0.32	
4,778.0	17.70	275.10	4,611.7	0.9	-1,104.3	1,103.5	0.29	-0.16	
4,841.0	17.60	274.90	4,671.8	2.6	-1,123.3	1,122.5	0.19	-0.16	
4,936.0	16.70	274.50	4,762.5	4.8	-1,151.3	1,150.3	0.96	-0.95	
4,999.0	16.00	271.10	4,823.0	5.7	-1,169.0	1,168.0	1.88	-1.11	
5,062.0	15.00	266.80	4,883.7	5.4	-1,185.8	1,184.8	2.42	-1.59	
5,157.0	13.00	261.90	4,975.9	3.2	-1,208.6	1,207.7	2.45	-2.11	
5,219.0	11.60	264.70	5,036.5	1.7	-1,221.7	1,220.9	2.45	-2.26	
5,272.0	11.10	269.50	5,088.4	1.2	-1,232.2	1,231.3	2.02	-0.94	
5,345.0	11.00	270.60	5,160.1	1.2	-1,246.1	1,245.3	0.32	-0.14	
5,408.0	10.50	275.30	5,222.0	1.8	-1,257.9	1,257.0	1.60	-0.79	
5,470.0	9.40	270.20	5,283.0	2.3	-1,268.6	1,267.6	2.27	-1.77	
5,533.0	8.70	268.40	5,345.2	2.2	-1,278.5	1,277.5	1.20	-1.11	
5,627.0	7.20	266.10	5,438.3	1.6	-1,291.5	1,290.5	1.63	-1.60	
5,722.0	5.60	264.00	5,532.7	0.7	-1,302.0	1,301.1	1.70	-1.68	
5,818.0	4.80	263.20	5,628.3	-0.3	-1,310.7	1,309.8	0.84	-0.83	
5,911.0	3.80	260.50	5,721.1	-1.2	-1,317.6	1,316.7	1.10	-1.08	
6,006.0	2.90	260.50	5,815.9	-2.2	-1,323.0	1,322.2	0.95	-0.95	
6,100.0	2.40	257.10	5,909.8	-3.0	-1,327.3	1,326.5	0.56	-0.53	

Cathedral Energy Services

Survey Report

Company:	Bonanza Creek Energy Operating Company, LLC	Local Co-ordinate Reference:	Well Wetco Farms G-4
Project:	Weld County	TVD Reference:	KBE @ 4575.0ft (Mid Con 12)
Site:	Wetco Farms L-4 Pad	MD Reference:	KBE @ 4575.0ft (Mid Con 12)
Well:	Wetco Farms G-4	North Reference:	True
Wellbore:	OH	Survey Calculation Method:	Minimum Curvature
Design:	OH	Database:	USA EDM 5000 Multi Users DB

Survey									
Measured Depth (ft)	Inclination (°)	Azimuth (°)	Vertical Depth (ft)	+N/-S (ft)	+E/-W (ft)	Vertical Section (ft)	Dogleg Rate (°/100ft)	Build Rate (°/100ft)	Formations / Comments
6,194.0	0.90	270.30	6,003.8	-3.4	-1,330.0	1,329.2	1.64	-1.60	
6,288.0	0.80	292.40	6,097.8	-3.2	-1,331.3	1,330.5	0.36	-0.11	
6,382.0	0.60	271.90	6,191.7	-2.9	-1,332.4	1,331.6	0.34	-0.21	
6,477.0	0.40	261.00	6,286.7	-2.9	-1,333.2	1,332.4	0.23	-0.21	
6,571.0	0.30	306.00	6,380.7	-2.8	-1,333.7	1,333.0	0.30	-0.11	
6,665.0	0.20	5.20	6,474.7	-2.5	-1,333.9	1,333.1	0.28	-0.11	
6,760.0	0.40	347.50	6,569.7	-2.1	-1,334.0	1,333.2	0.23	0.21	
6,823.0	0.70	341.20	6,632.7	-1.5	-1,334.2	1,333.3	0.49	0.48	Last Cathedral Survey @ 6,823' MD
6,873.0	0.70	341.20	6,682.7	-0.9	-1,334.4	1,333.5	0.00	0.00	Projection to Bit @ 6,873'

Targets									
Target Name - hit/miss target - Shape	Dip Angle (°)	Dip Dir. (°)	TVD (ft)	+N/-S (ft)	+E/-W (ft)	Northing (ft)	Easting (ft)	Latitude	Longitude
Wetco Farms G-4 TGT - survey misses target center by 4.8ft at 6207.2ft MD (6017.0 TVD, -3.4 N, -1330.2 E) - Point	0.00	0.00	6,017.0	0.1	-1,326.8	1,370,311.28	3,293,338.48	40.345120	-104.447610
Wetco Farms G-4 PBHL - survey misses target center by 7.5ft at 6819.3ft MD (6629.0 TVD, -1.5 N, -1334.1 E) - Circle (radius 50.0)	0.00	0.00	6,629.0	0.1	-1,326.8	1,370,311.28	3,293,338.48	40.345120	-104.447610

Survey Annotations					
Measured Depth (ft)	Vertical Depth (ft)	Local Coordinates			
		+N/-S (ft)	+E/-W (ft)	Comment	
6,823.0	6,632.7	-1.5	-1,334.2	Last Cathedral Survey @ 6,823' MD	
6,873.0	6,682.7	-0.9	-1,334.4	Projection to Bit @ 6,873'	

Checked By: _____ Approved By: _____ Date: _____