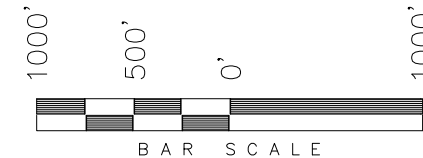


T7S, R92W, 6th P.M.

ENCANA OIL & GAS (USA) INC

WELL LOCATION, SHIDELER FEE 31-6DD (K31E), LOCATED AS SHOWN IN THE NE 1/4 SW 1/4 OF SECTION 31, T7S, R92W, 6th P.M. GARFIELD COUNTY, COLORADO.



NOTES:

1. Well footages are measured at right angles to the Section Lines.
2. Bearings are based on Global Positioning Satellite observations.
3. G.P.S. Operator: C.D. Slauch, (PDOP) = 2.5

WELL LOCATION:
SHIDELER FEE 31-6DD (K31E)

ELEV. UNGRADED GROUND = 6899.2'

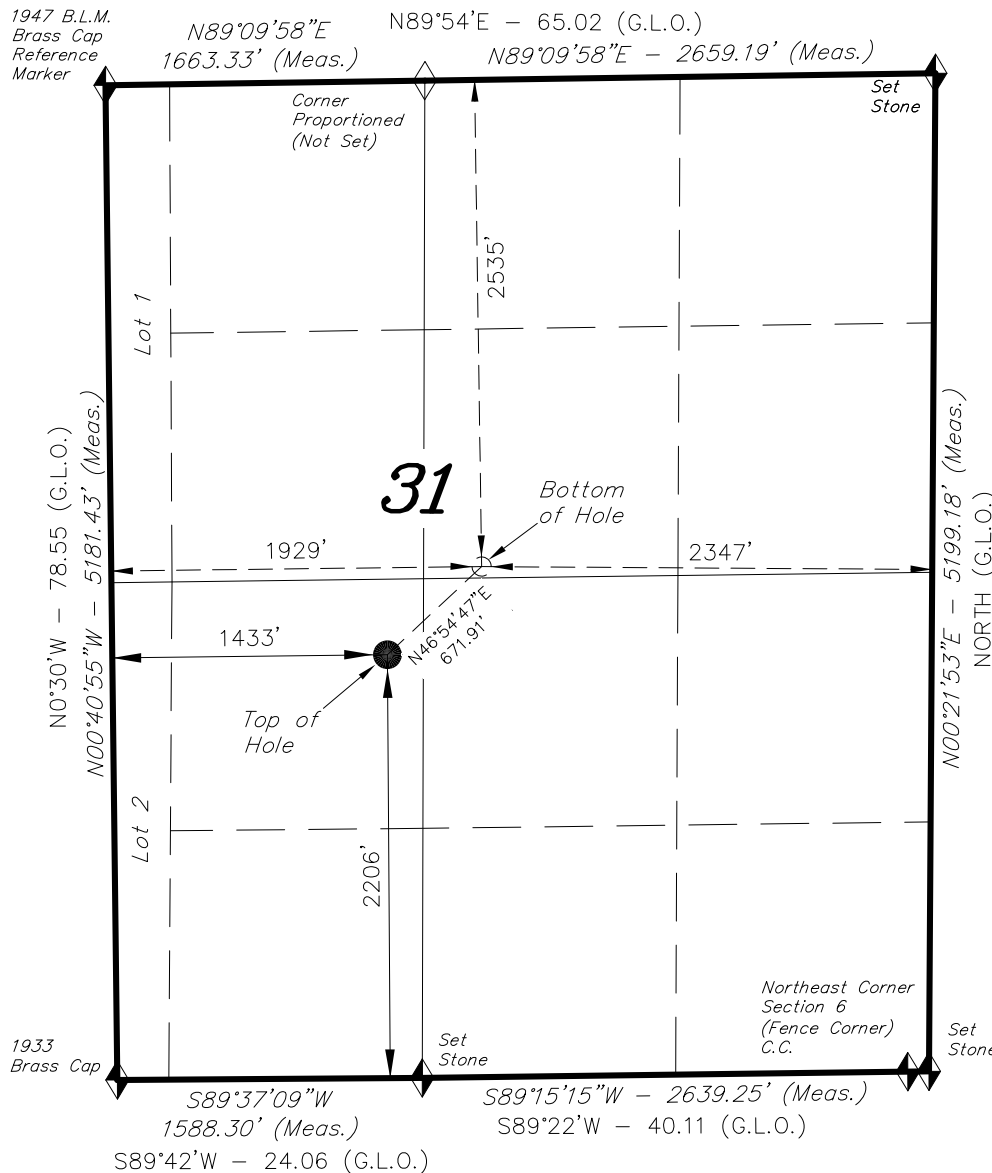
THIS IS TO CERTIFY THAT THE ABOVE PLAT WAS PREPARED FROM FIELD NOTES AND SURVEYS MADE BY ME OR UNDER MY SUPERVISION. THE LOCATION HAS BEEN STAKED ON THE GROUND AS SHOWN ON THE PLAT, AND THAT THE SAID ARE TRUE AND CORRECT TO THE BEST OF MY KNOWLEDGE AND BELIEF.

[Signature]
REGISTERED LAND SURVEYOR
REGISTRATION NO. 30125
STATE OF COLORADO

TRI STATE LAND SURVEYING & CONSULTING

180 NORTH VERNAL AVE. - VERNAL, UTAH 84078
(435) 781-2501

DATE SURVEYED: 11-13-10	SURVEYED BY: C.D.S	SHEET 2b OF 11
DATE DRAWN: 11-08-11	DRAWN BY: M.W.	
REVISED: 01-13-12 - M.W.	SCALE: 1" = 1000'	



◆ = SECTION CORNERS LOCATED

Basis of elevation is the Rifle 2 Triangulation Station. 39°31'53.80" N Lat. & 107°47'07.78" W Long. (NAD 83). Elevation = 5323.1' (NAVD88).

NAD 83 (SURFACE LOCATION)	
LATITUDE = 39°24'06.54"	(39.401817)
LONGITUDE = 107°42'32.19"	(107.708941)
NAD 83 (BOTTOM HOLE LOCATION)	
LATITUDE = 39°24'11.07"	(39.403075)
LONGITUDE = 107°42'25.94"	(107.707207)