

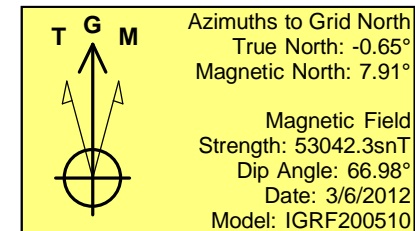
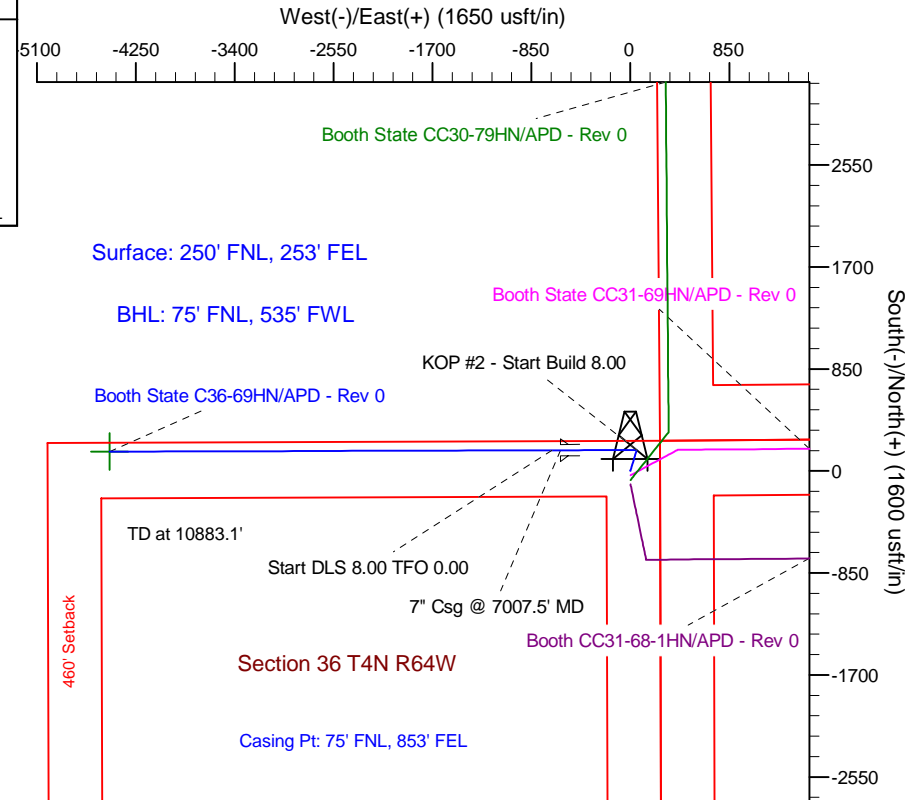
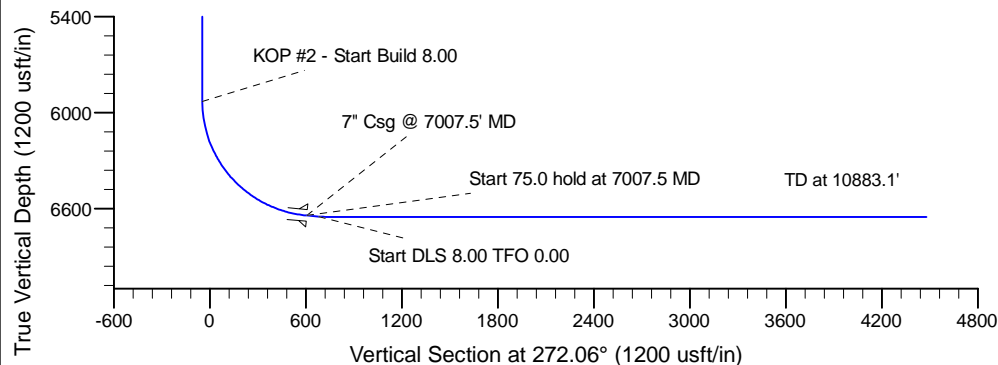
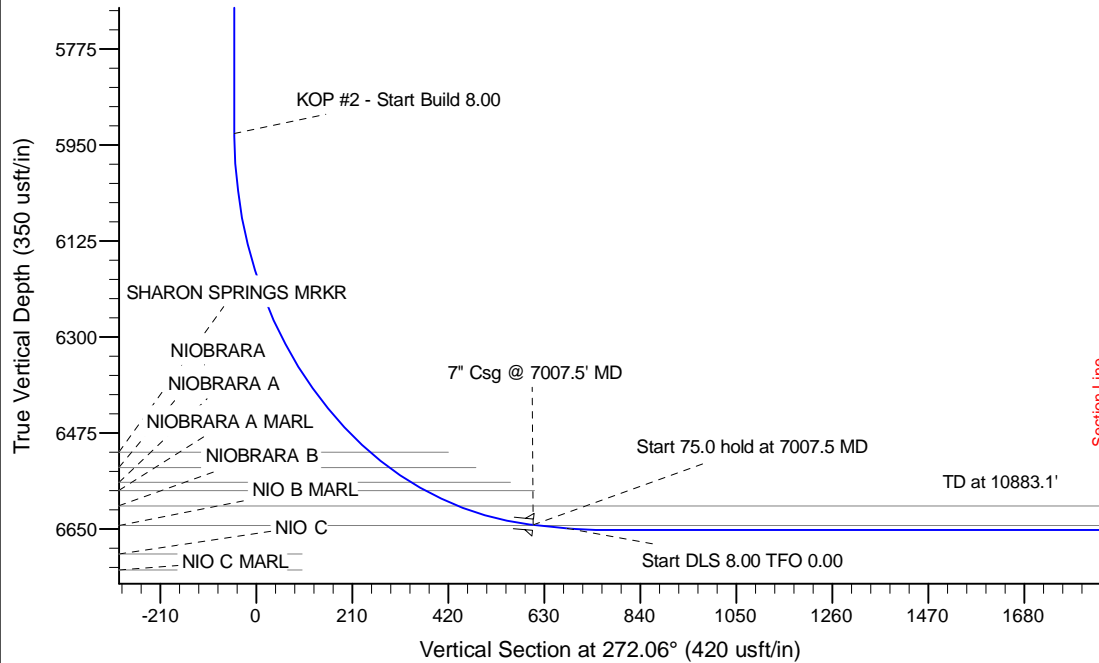
Project: Wattenberg Field  
 Site: CC (Sec.36-T04N-R64W) Weld County, CO  
 Well: Booth State C36-69HN  
 Wellbore: Original Drilling  
 Design: APD - Rev 0

# Northern Region Drilling

Geodetic System: US State Plane 1983  
 Datum: North American Datum 1983  
 Ellipsoid: GRS 1980  
 Zone: Colorado Northern Zone  
 System Datum: Mean Sea Level

## SECTION DETAILS

Sec	MD	Inc	Azi	TVD	+N/-S	+E/-W	Dleg	TFace	VSect	Target
1	0.0	0.00	0.00	0.0	0.0	0.0	0.00	0.00	0.0	
2	2000.0	0.00	0.00	2000.0	0.0	0.0	0.00	0.00	0.0	
3	2480.5	12.01	17.15	2476.9	47.9	14.8	2.50	17.15	-13.1	
4	2878.3	12.01	17.15	2866.1	127.1	39.2	0.00	0.00	-34.6	
5	3358.7	0.00	0.00	3343.0	175.0	54.0	2.50	180.00	-47.7	
6	5945.0	0.00	0.00	5929.3	175.0	54.0	0.00	0.00	-47.7	
7	7007.5	85.00	269.82	6642.7	172.9	-599.8	8.00	269.82	605.6	
8	7082.5	85.00	269.82	6649.3	172.7	-674.5	0.00	0.00	680.3	
9	7145.0	90.00	269.82	6652.0	172.5	-736.9	8.00	0.00	742.6	
10	10883.1	90.00	269.82	6652.0	160.8	-4475.0	0.00	0.00	4477.9	Booth State C36-69HN BHL 75'FNL, 535'FWL



## WELL DETAILS: Booth State C36-69HN

Ground Level: 4758.0  
 Northing 1344783.08 Easting 3281602.57 Latitude 40.275430 Longitude -104.490730

Plan: APD - Rev 0 (Booth State C36-69HN/Original Drilling)

Created By: Carrie Willers

Date: 8:49, March 08 2012

OK to submit with 2A as per Noble Drilling  
 3/8/2012 4:08