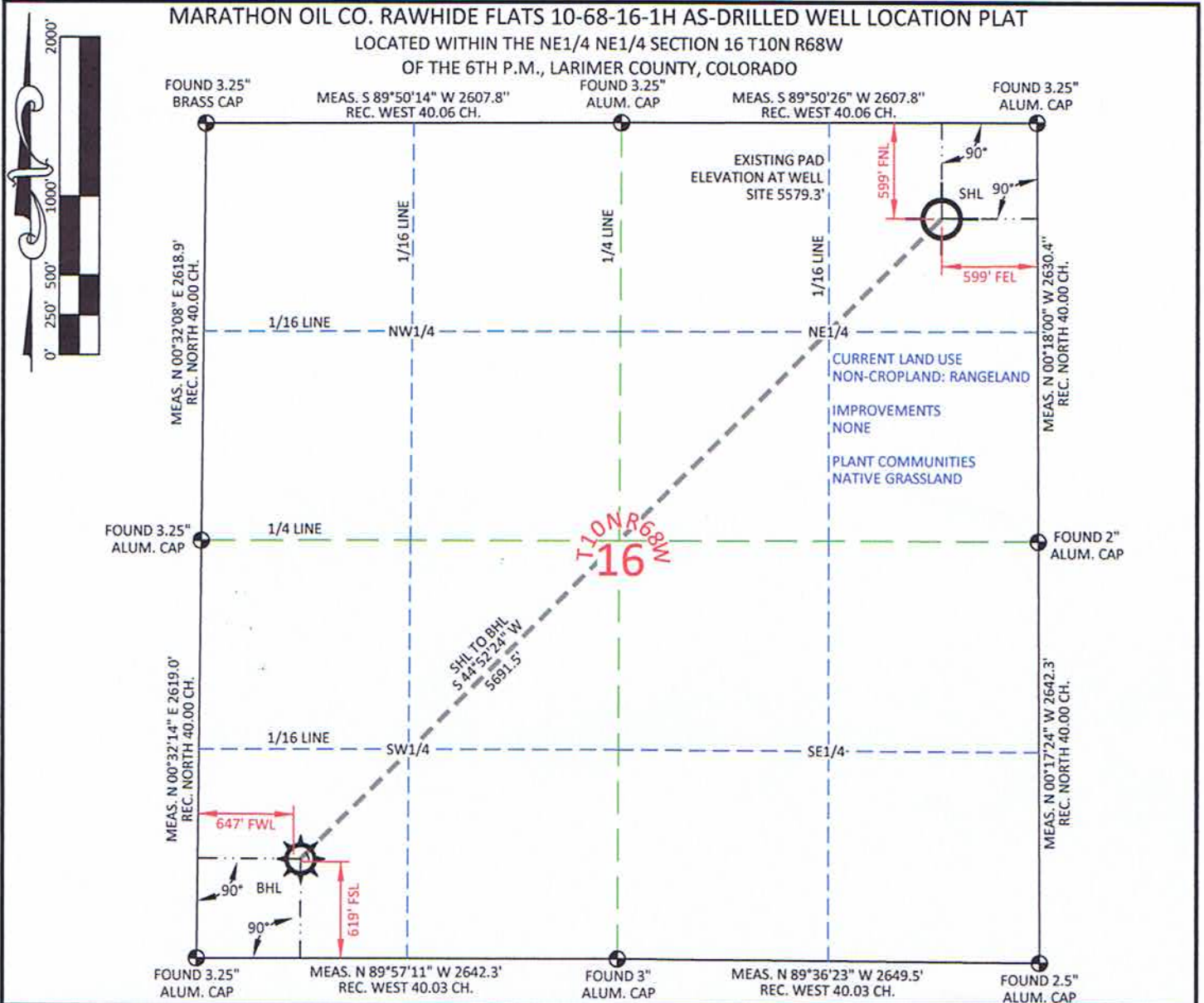


MARATHON OIL CO. RAWHIDE FLATS 10-68-16-1H AS-DRILLED WELL LOCATION PLAT

LOCATED WITHIN THE NE1/4 NE1/4 SECTION 16 T10N R68W

OF THE 6TH P.M., LARIMER COUNTY, COLORADO



SURFACE HOLE (AS-DRILLED)

GEOGRAPHIC DEC. DEG.	LAT.	40.839663°
	LONG.	105.002415°
GEOGRAPHIC DEC. MIN. SEC.	LAT.	40.839680°
	LONG.	105.001886°
GEOGRAPHIC DEC. MIN. SEC.	LAT.	40°50'22.78"
	LONG.	105°00'08.69"
GEOGRAPHIC DEC. MIN. SEC.	LAT.	40°50'22.85"
	LONG.	105°00'06.79"
STATE PLANE CO. NORTH	NORTH	1549123.90
	EAST	3137683.16
STATE PLANE CO. NORTH	NORTH	549121.14
	EAST	2137832.96

FOOTAGE: 599' FEL - 599' FNL

BOTTOM HOLE (AS-DRILLED)

GEOGRAPHIC DEC. DEG.	LAT.	40.828654°
	LONG.	105.017006°
GEOGRAPHIC DEC. MIN. SEC.	LAT.	40.828671°
	LONG.	105.016477°
GEOGRAPHIC DEC. MIN. SEC.	LAT.	40°49'43.15"
	LONG.	105°01'01.22"
GEOGRAPHIC DEC. MIN. SEC.	LAT.	40°49'43.21"
	LONG.	105°00'59.32"
STATE PLANE CO. NORTH	NORTH	1545090.53
	EAST	3133667.57
STATE PLANE CO. NORTH	NORTH	545087.88
	EAST	2133817.48

FOOTAGE: 647' FWL - 619' FSL

I, Rodney A. Walters, Professional Land Surveyor, CO. LS #16847 hereby certify that (in accordance with a request from Erin Bibeau with Marathon Oil Co, 5555 San Felipe, Houston, TX 77056) I and or personnel under my direction made a survey on the 7th day of December 2011, for the Surface Hole Location and Elevation of Marathon Oil Co. RAWHIDE FLATS 10-68-16-1H being located within the NE1/4 NE1/4 Section 16, T10N R68W and the Bottom Hole Location being located in the SW1/4 SW1/4 of Section 16, T10N, R68W, both being of the 6th P.M., Larimer County, State of Colorado.

- All bearings and distances are GRID, based on the Colorado State Plane Coordinate System, North Zone, North American Datum 1983 from GPS observations occupying a WHS control point (5/8" rebar) and having the Location and Elevation derived from an Opus Solution.
- Vertical Datum used is of NAVD 88.
- Record Bearings and Distances as shown are based on the General Land Office Survey plat approved on the 16th day of December 1872.
- Geographic coordinates for the bottom hole location were taken from the wellpath report prepared by Baker Hughes for Rawhide Flats 10-68-16-1H and dated 11/29/2011.



CONFIDENTIALITY NOTES:

The information contained in this plat is legally privileged and confidential information intended only for the use of the recipients. If you are not the intended recipients, you are hereby notified that any use, dissemination, distribution or copying of this information is strictly prohibited.

WILLIAM H. SMITH
& ASSOCIATES P.C.
SURVEYING CONSULTANTS
550 EAST SECOND NORTH PHONE: 307-875-3638
GREEN RIVER, WY 87601 307-875-3639
www.wsmithpc.com

DRAWN BY: LAL	CHECKED BY: RAW
PROJECT NO: 1068161H	JOB NO: 2011001
REVISIONS:	

LEGEND

- FOUND CORNER
- CALCULATED CORNER
- NOTHING FOUND

LOCATION:

RAWHIDE FLATS 10-68-16-1H
WITHIN THE NE/4
NE/4 SECTION 16,
T 10 N, R 68 W,
6TH P.M.
LARIMER COUNTY,
COLORADO

MARATHON OIL COMPANY

PO BOX 3128, HOUSTON TX, 77253
5555 SAN FELIPE, HOUSTON TX, 77056

AS-DRILLED WELL LOCATION PLAT

SCALE: 1"=1000'	EXHIBIT "A"
DATE: 04/09/2012	SHEET 1 OF 1