

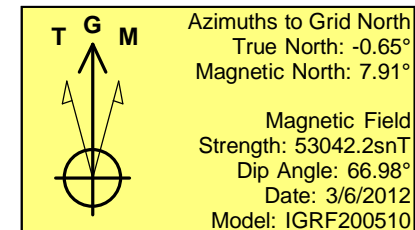
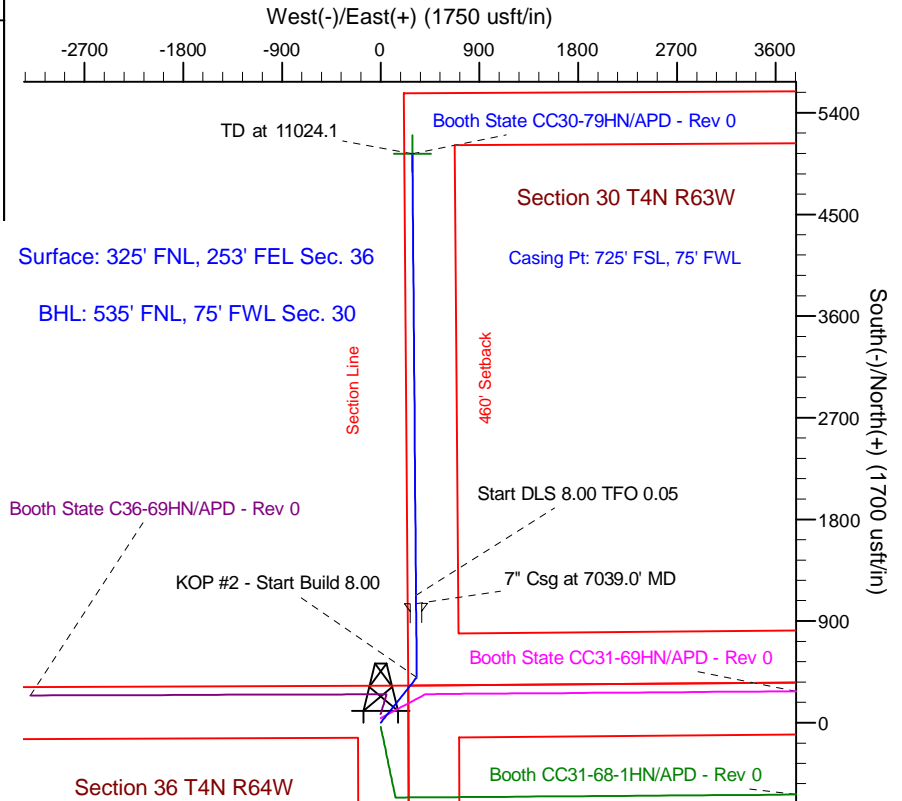
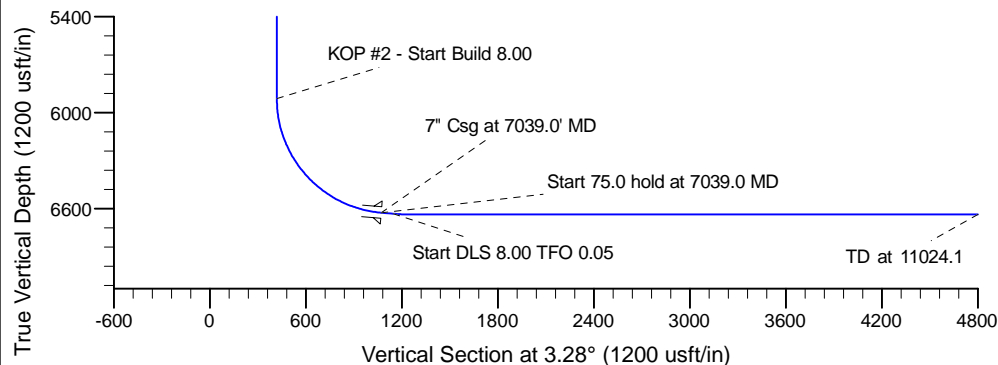
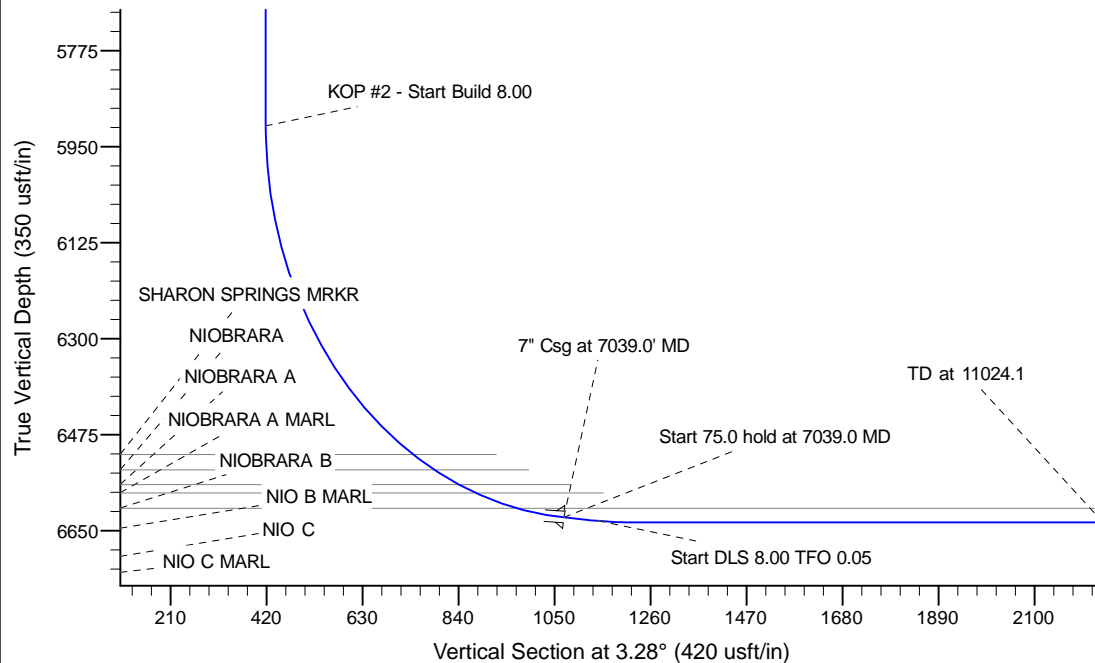
Project: Wattenberg Field  
 Site: CC (Sec.36-T04N-R64W) Weld County, CO  
 Well: Booth State CC30-79HN  
 Wellbore: Original Drilling  
 Design: APD - Rev 0

# Northern Region Drilling

Geodetic System: US State Plane 1983  
 Datum: North American Datum 1983  
 Ellipsoid: GRS 1980  
 Zone: Colorado Northern Zone  
 System Datum: Mean Sea Level

## SECTION DETAILS

Sec	MD	Inc	Azi	TVD	+N-S	+E-W	Dleg	TFace	VSect	Target
1	0.0	0.00	0.00	0.0	0.0	0.0	0.00	0.00	0.0	
2	1500.0	0.00	0.00	1500.0	0.0	0.0	0.00	0.00	0.0	
3	2139.1	15.98	39.35	2130.8	68.5	56.1	2.50	39.35	71.6	
4	3375.2	15.98	39.35	3319.2	331.5	271.9	0.00	0.00	346.5	
5	4014.2	0.00	0.00	3950.0	400.0	328.0	2.50	180.00	418.1	
6	5976.5	0.00	0.00	5912.3	400.0	328.0	0.00	0.00	418.1	
7	7039.0	85.00	359.51	6625.7	1053.8	322.4	8.00	359.51	1070.5	
8	7114.0	85.00	359.51	6632.3	1128.5	321.8	0.00	0.00	1145.0	
9	7176.5	90.00	359.51	6635.0	1190.9	321.2	8.00	0.05	1207.3	
10	11024.1	90.00	359.51	6635.0	5038.3	288.6	0.00	0.00	5046.6	Booth State CC30-79HN BHL 535'FNL, 75'FWL



## WELL DETAILS: Booth State CC30-79HN

Ground Level: 4759.0  
 Northing: 1344706.58 Easting: 3281603.44 Latitude: 40.275220 Longitude: -104.490730

Plan: APD - Rev 0 (Booth State CC30-79HN/Original Drilling)

Created By: Carrie Willers Date: 15:54, March 08 2012

**OK to submit with 2A as per Noble Drilling**  
**3/8/2012 4:00**