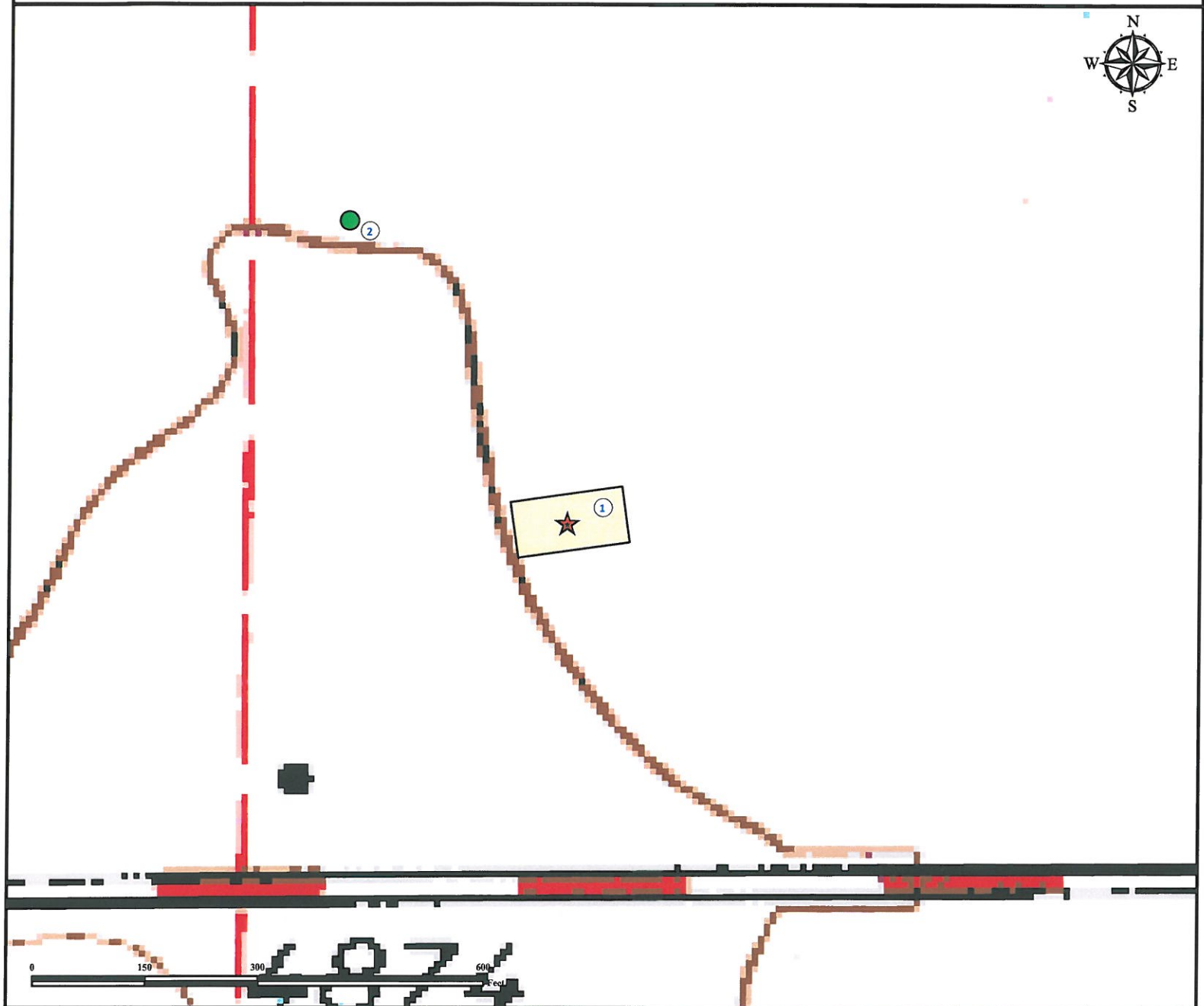


# Reference Area Map

## BALDRIDGE 8-1 FACILITY



SW¼ SE¼ SECTION 36, TOWNSHIP 7 NORTH, RANGE 67 WEST OF THE 6TH PRINCIPAL MERIDIAN



1. Proposed BALDRIDGE 8-1 FACILITY.

2. Reference Photo Point.

### Legend

-  Reference Point
-  Reference Photo Point

 Proposed Facility

### Reference Location

\*\* BALDRIDGE 8-1 Facility  
Reference Photo Point (NAD 83)\*\*

Lat: 40.525832° Long: -104.841137° (NAD83)  
Elevation: 4877 Feet

Use our resources to find yours!  
[www.petro-fs.com](http://www.petro-fs.com)  
(303) 928-7128

Field Date: 03/08/2012  
Drafting Date: 03/22/2012  
Drafter: DLR  
Checked By: BHF

Data Sources:  
- Topo courtesy of USGS

Prepared for:

 **BAYSWATER**  
EXPLORATION AND PRODUCTION, LLC

