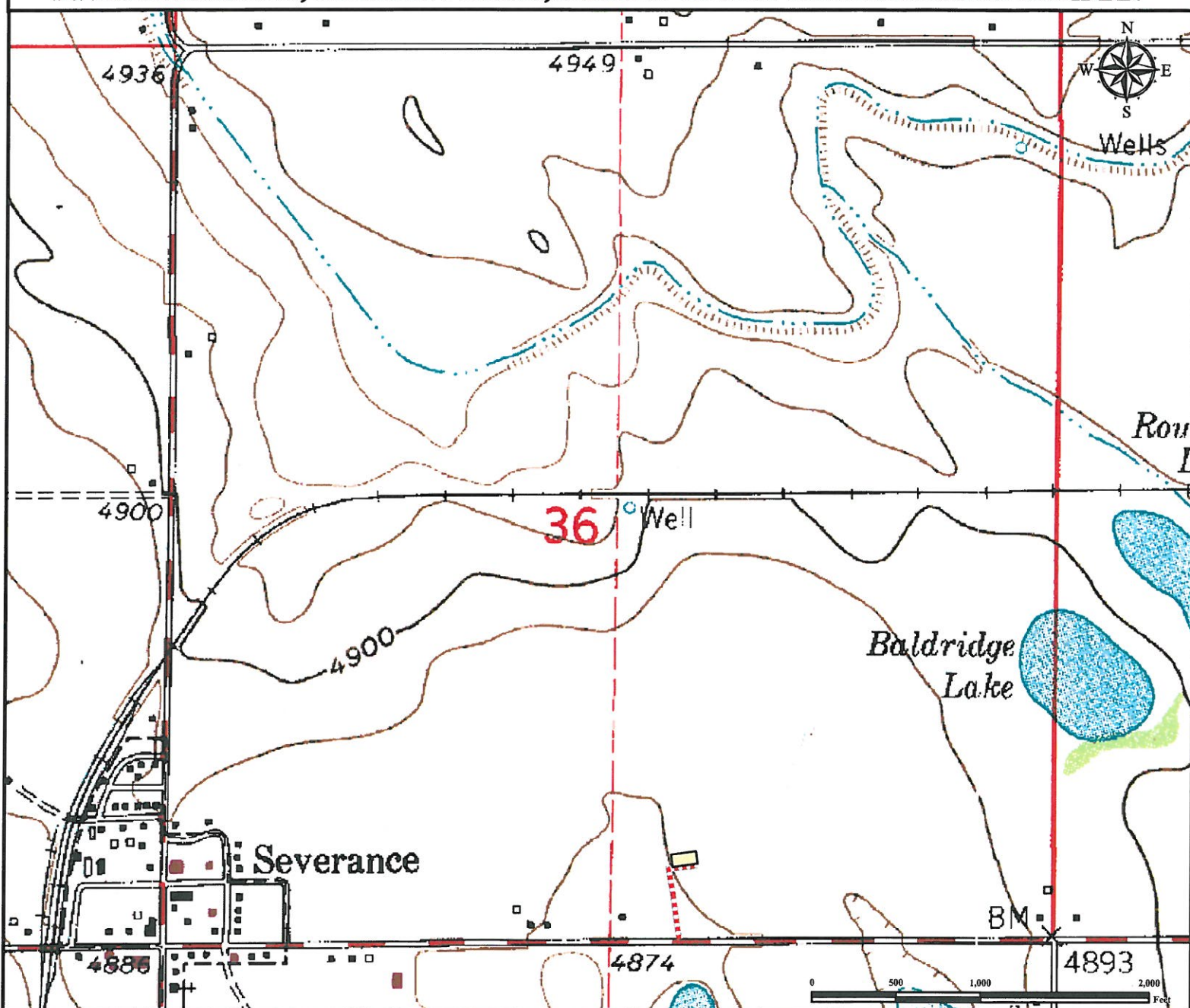


Access Road Map

BALDRIDGE 8-1 FACILITY

SW¼ SE¼ SECTION 36, TOWNSHIP 7 NORTH, RANGE 67 WEST OF THE 6TH PRINCIPAL MERIDIAN



From Severance, CO: From the intersection of 1st Street and 4th Avenue,
Drive East on 4th Avenue for ±0.6 miles.
Turn Left on proposed access road and drive north ±0.08 mile.
Turn Right on proposed access road and follow for ±0.03 mile to proposed facility location.

Total distance from Severance, CO to proposed facility location is ±0.71 miles.

Legend

Proposed Facility Proposed Access Road

Reference Location

** All Measurements are Made from
Reference Point ★ **

Lat: 40.524720° Long: -104.84008° (NAD83)
Elevation: 4878 Feet



Use our resources to find yours!
www.petro-fs.com
(303) 928-7128

Field Date: 03/08/2012
Drafting Date: 03/21/2012
Drafter: DLR
Checked By: BHF

Data Sources:
Topo courtesy of USGS

Prepared for:

BAYSWATER
EXPLORATION AND PRODUCTION, LLC